



BLACK BOX ACR1002DP KVM Over IP Extender Transmitter User Guide

[Home](#) » [BLACK BOX](#) » BLACK BOX ACR1002DP KVM Over IP Extender Transmitter User Guide 

BLACK BOX ACR1002DP KVM Over IP Extender Transmitter



Contents

- 1 Welcome
- 2 Initial Configuration
- 3 Direct linking
- 4 Networked linking
- 5 Agility Configuration Via Web Pages
- 6 Connections
 - 6.1 Teaming
- 7 Main Status Indicators
- 8 To Perform a Manual Factory Reset
- 9 Customer Support
- 10 Documents / Resources
 - 10.1 References
- 11 Related Posts

Welcome

This quick start guide covers some of the key points of the Black Box ACR1002DP, ACR1002FDP and ACR1002FH-T modules. Full user details and setup instructions can be found at www.blackbox.com. Please read the supplied safety instruction leaflet before use.

Initial Configuration

Agility modules can be linked in two main ways: Direct or Networked.

Direct linking

Where Agility transmitters and receivers are directly linked to each other, very little configuration action is required, provided that they both have their factory default settings in place – just link them together. If the standard settings have been changed in a previous installation, you merely need to perform a manual factory reset on each unit. Please see the center pages.



Networked linking

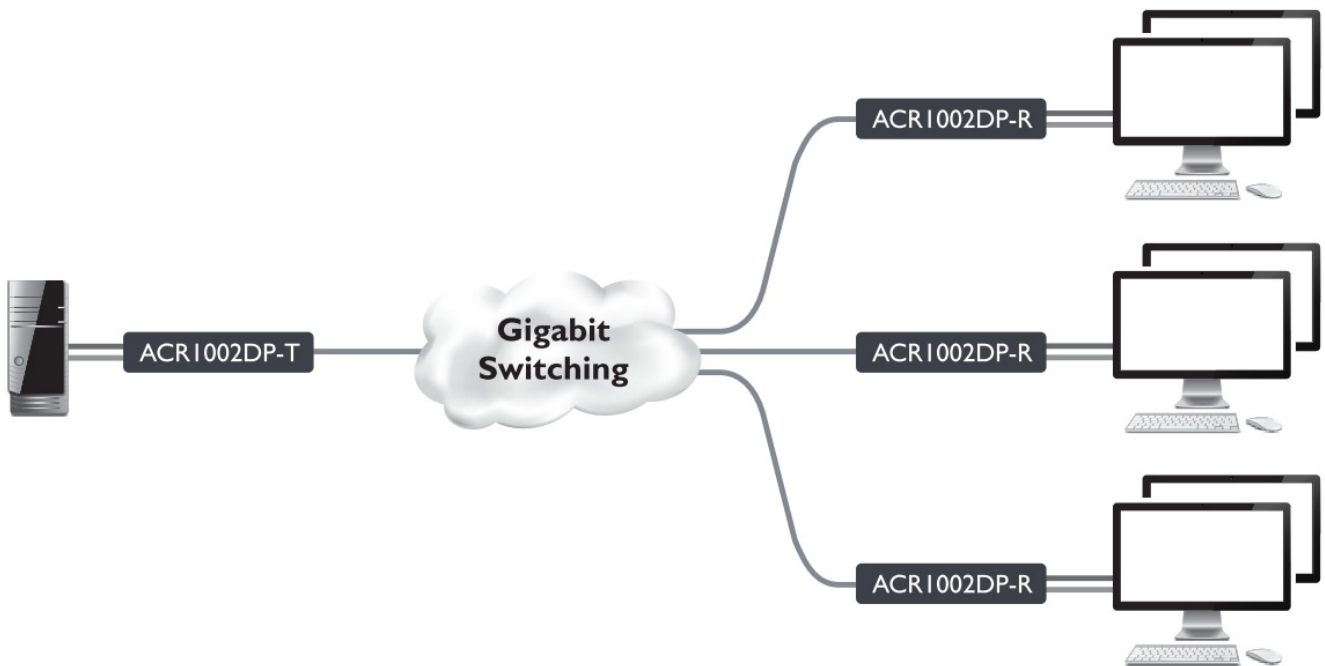
Where Agility modules are connected via networked links, you can either configure them individually, or configure them collectively using an iPATH server:

- Configuring networked Agility modules individually – You need to specify the network addresses of the Agility modules so that they can locate each other. This can be done using via OSD on the console connected to the RX unit by pressing CTRL + ALT + C. See rear page.
- Configuring networked Agility modules collectively – The iPATH server allows you to configure, control and coordinate any number of Agility transmitters and receivers from a single application. See blackbox.com for details.

Note: If you are using one or more Agility transmitters within an installation managed by an iPATH server, the

iPATH server must be running firmware version 5.3 or above.

IMPORTANT: When using iPATH to configure Agility modules, it is vital that all units that you wish to locate and control are set to their factory default settings. Otherwise they will not be located by the iPATH server. If necessary, perform a manual factory reset on each Agility unit. See center pages.



Agility Configuration Via Web Pages

Each Agility module hosts its own internal set of web pages which contain all configuration details and settings. You will need to use a computer connected to the same network as each Agility unit to access the web pages. Additionally, on the console attached to the receiver unit, you can access its configuration details via the On Screen Display (OSD) by pressing:

CTRL + ALT + C

To configure Agility modules via their web pages

Run a web browser on your computer and enter the IP address of the required Agility:

The default addresses (if using port 1) are: Transmitter: <https://169.254.1.33>

Receiver: <https://169.254.1.32>

The default addresses (if using port 2) are: Transmitter: <https://169.254.1.43>

Receiver: <https://169.254.1.42>

The opening page should be displayed:

Welcome

Please choose your language and keyboard layout.



English ▼



English (US) ▼

OK

5.02.0029 | 5.02.0029 | 5.02.0029 | 0.00
00:0F:58:02:E5:80 | 00:0F:58:02:E5:81



Connections

Teaming

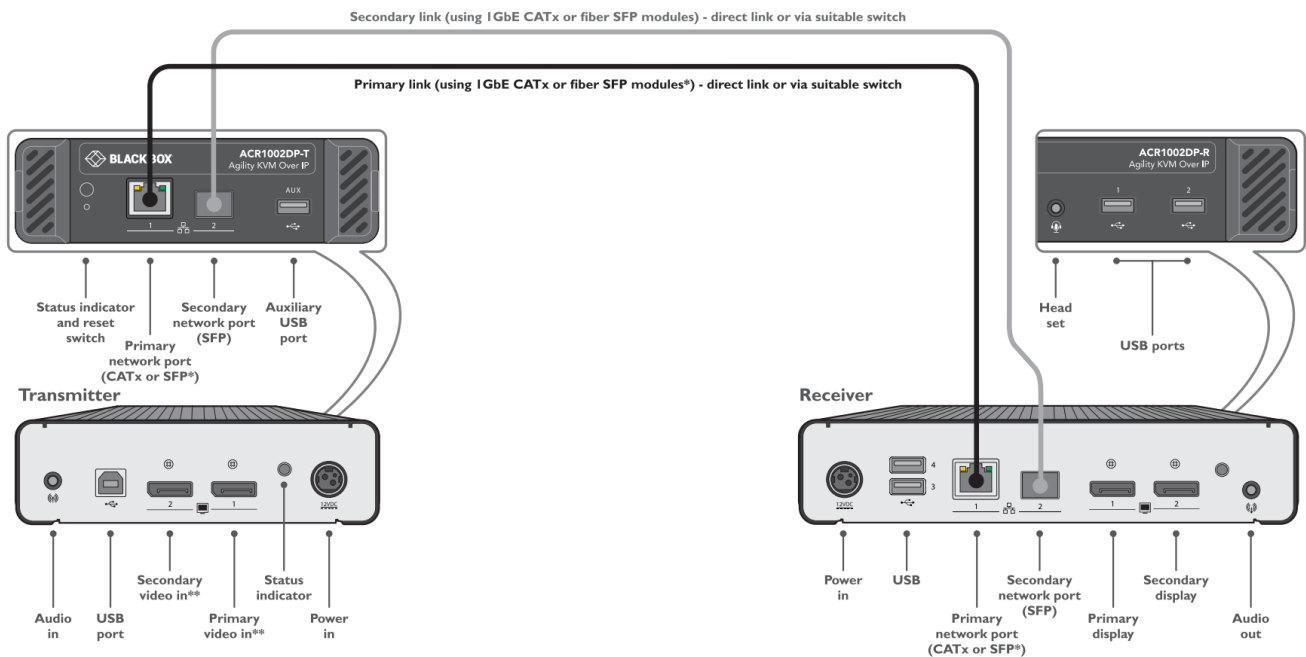
Agility modules are ready to automatically invoke teaming whenever the primary and secondary ports are both used to link transmitters and receivers. Teaming potentially doubles the available bandwidth for video intensive applications and also provides redundancy in case one link is lost.

* ACR1002FDP variants have 2x SFP sockets and no in-built CATx ports.

** ACR1002FH-T variants have 2x HDMI® video ports.

The units benefit from multiple audio signal streams:

- Uni-directional analog audio – from the host PCs jack socket,
- Bi-directional digital audio – via the USB connection (converted to/from analog),
- Bi-directional digital audio – via the video connection.



Main Status Indicators

Green All services present.

Amber Running but video, USB or network link missing.

Red Booting before processor loaded or failed.

Red rapid flash Critical error has been detected (a message will also be displayed within the OSD.)

Blue Factory reset mode active.

Red/green flash Booting into factory recovery mode.

Green/blue flash Upgrade mode active.

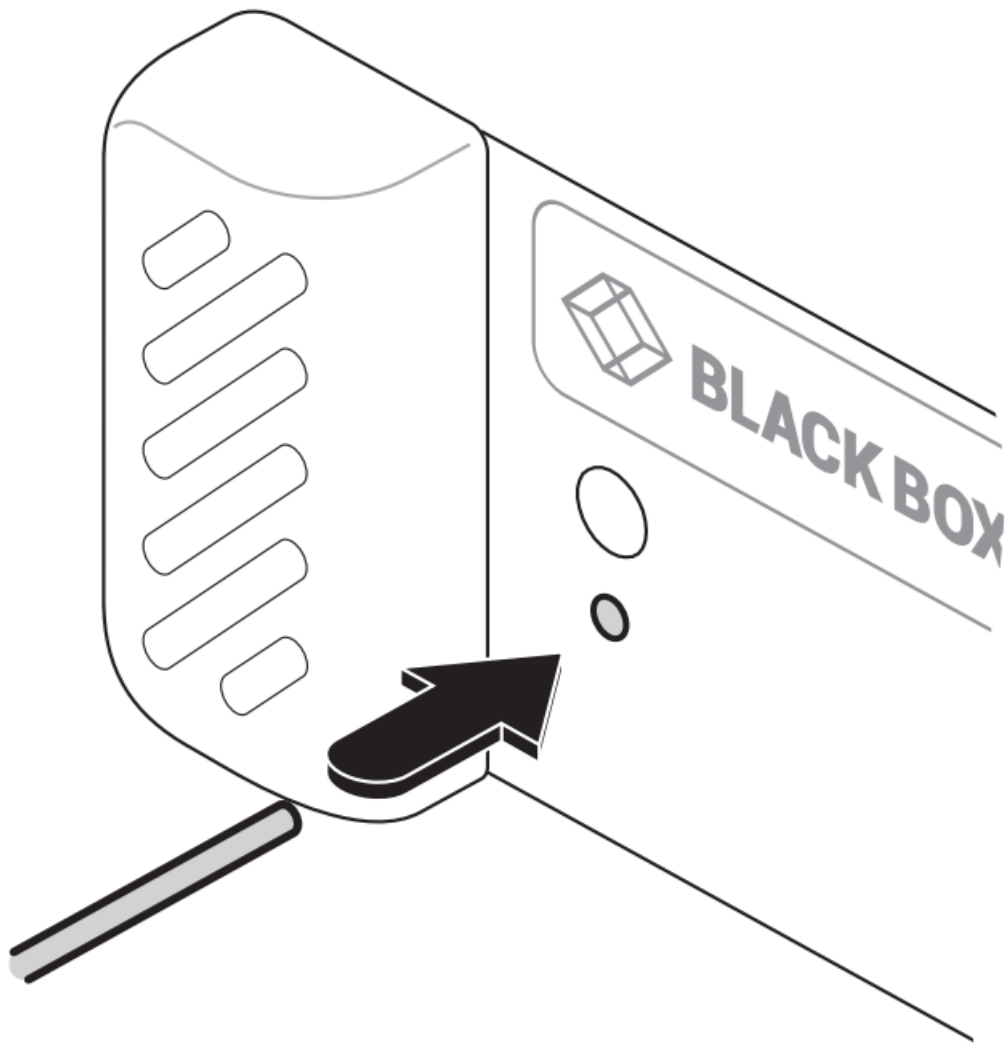
Fast green flash Identify mode active.

To Perform a Manual Factory Reset

A factory reset returns the Agility module to its default configuration.

1. Power on the Agility module.
2. Use a long narrow implement (e.g., a straightened-out paper clip) to press-and-hold the recessed reset button on the front panel for roughly ten seconds until the status indicator turns blue (Note: alternating red/green indications will occur during the ten second period while the button is still pressed).
3. Release the reset switch. The indicator will change to red for a short time (less than ten seconds) and then back to blue while the Agility module performs the reset and should then change to an alternative color, usually orange initially, signifying that the operation is complete.

Note: If you are performing a factory reset and intend to disconnect the power immediately after the reset, you must wait at least 30 seconds after you have released the reset button for it to complete the process.



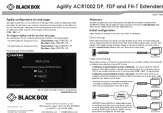
Customer Support

Order toll-free in the U.S. or for
FREE technical support 24/7: Call 877-877-BBOX
(outside U.S. call 724-746-5500)

www.blackbox.com • info@blackbox.com



Documents / Resources

| | |
|---|---|
|  | <p>BLACK BOX ACR1002DP KVM Over IP Extender Transmitter [pdf] User Guide ACR1002DP KVM Over IP Extender Transmitter, ACR1002DP, KVM Over IP Extender Transmitt er, IP Extender Transmitter, Extender Transmitter, Transmitter</p> |
|---|---|

References

-  [Global IT Products & Network Solutions Provider | Black Box](#)

-  [Global IT Products & Network Solutions Provider | Black Box](#)

Manuals+.