



BIXOLON Web Print SDK iOS Software User Guide

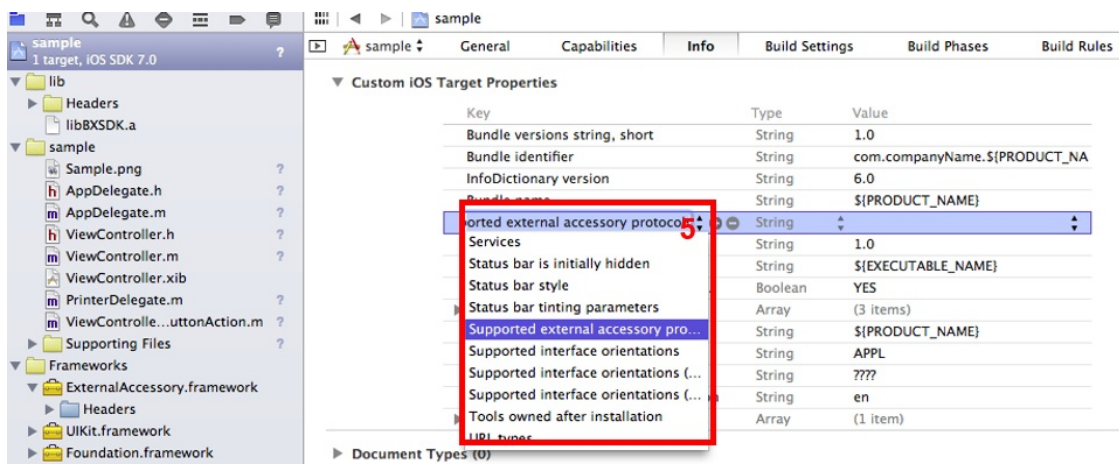
[Home](#) » [BIXOLON](#) » BIXOLON Web Print SDK iOS Software User Guide 

Contents

- 1 BIXOLON Web Print SDK iOS Software
- 2 Manual Information
- 3 Web Print SDK Operating Environment
 - 3.1 Features
 - 3.2 Supported OS & Web Browser
 - 3.3 Supported Interface
 - 3.4 Supported printers
- 4 Useful Function
 - 4.1 launch screen
 - 4.2 Setting
- 5 Appendix
 - 5.1 Log file check method
 - 5.2 Bluetooth Printer Connection
 - 5.3 WiFi/Ethernet Printer Connection
- 6 Revision history
- 7 Documents / Resources
 - 7.1 References
- 8 Related Posts

BIXOLON

BIXOLON Web Print SDK iOS Software



Copyright

© BIXOLON Co., Ltd. All rights reserved.

This user manual and all property of the product are protected under copyright law. It is strictly prohibited to copy, store, and transmit the whole or any part of the manual and any property of the product without the prior written approval of BIXOLON Co., Ltd. The information contained herein is designed only for use with this BIXOLON product. BIXOLON is not responsible for any direct or indirect damages, arising from or related to use of this information.

- The BIXOLON logo is the registered trademark of BIXOLON Co., Ltd.
- All other brand or product names are trademarks of their respective companies or organizations.

BIXOLON Co., Ltd. maintains ongoing efforts to enhance and upgrade the functions and quality of all our products. In the following, product specifications and/or user manual content may be changed without prior notice.

Caution

Some semiconductor devices are easily damaged by static electricity. You should turn the printer “OFF”, before you connect or remove the cables on the rear side, in order to guard the printer against the static electricity. If the printer is damaged by the static electricity, you should turn the printer “OFF”.

Manual Information

This manual contains the information needed to write web applications in using BIXOLON's printers with the BIXOLON Web Print SDK. Those who are using this application are recommended to carefully read the instructions in this manual prior to use.

Web Print SDK Operating Environment

Features

- It provides the feature controlling printers on WebView that display web pages inside this application.

Supported OS & Web Browser

- iOS V12.0 or later

Supported Interface

- Bluetooth
- Wi-Fi

- Ethernet

Supported printers

POS Printer

SRP-S300
SRP-Q300 / SRP-Q302
SRP-380 / SRP-382 / SRP-383
SRP-380II / SRP-382II
SRP-F310II / SRP-F312II / SRP-F313II
SRP-350plusIII / SRP-352plusIII
SRP-275III
SRP-S320
SRP-S3000
SRP-B300
SRP-S200
SRP-350V / SRP-352V
SRP-350plusV / SRP-352plusV
SRP-330III / SRP-332III

Label Printer

SLP-TX400 / SLP-TX403
SLP-TX420 / SLP-TX423
SLP-TX220 / SLP-TX223
SLP-DX420 / SLP-DX423
SLP-DX220 / SLP-DX223
SLP-DL410 / SLP-DL413

Mobile Receipt Printer

SPP-R200III
SPP-R310
SPP-R410
SPP-C200
SPP-C300

Mobile Label Printer

SPP-L3000
XM7-20
XM7-30
XM7-40(RFID)
SPP-L310 / SPP-L410

B-gate

BGT-100P / BGT-102P
SRP-Q300H / SRP-Q302H
SRP-S300H
SRP-F310IIH / SRP-F312IIH
SRP-S320Hi

Useful Function

launch screen

11:06

http://192.168.1.168/Sample_PosPri...

BIXOLON®

Receipt Sample

Result :

Printer name :

Printer1

Print receipt

Barcode Sample

Barcode symbology :

Code128

Barcode data :

BXLTEST12345678901234567

Barcode alignment :

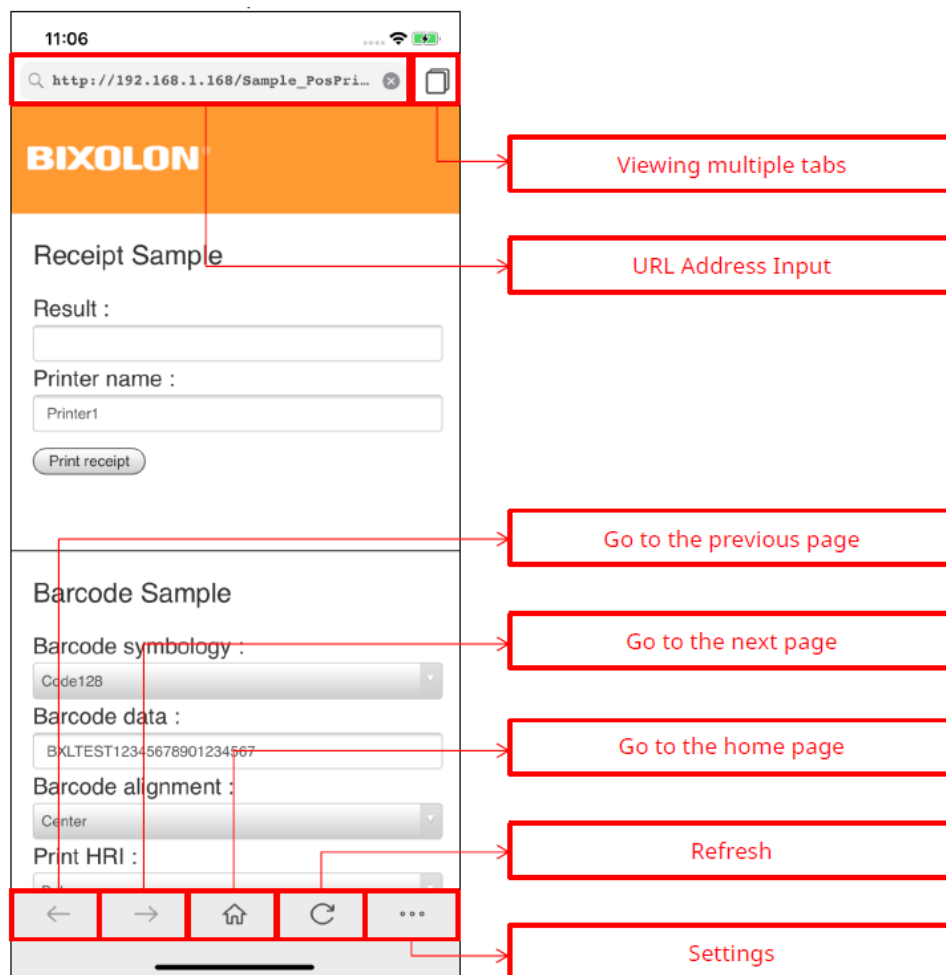
Center

Print HRI :

Below

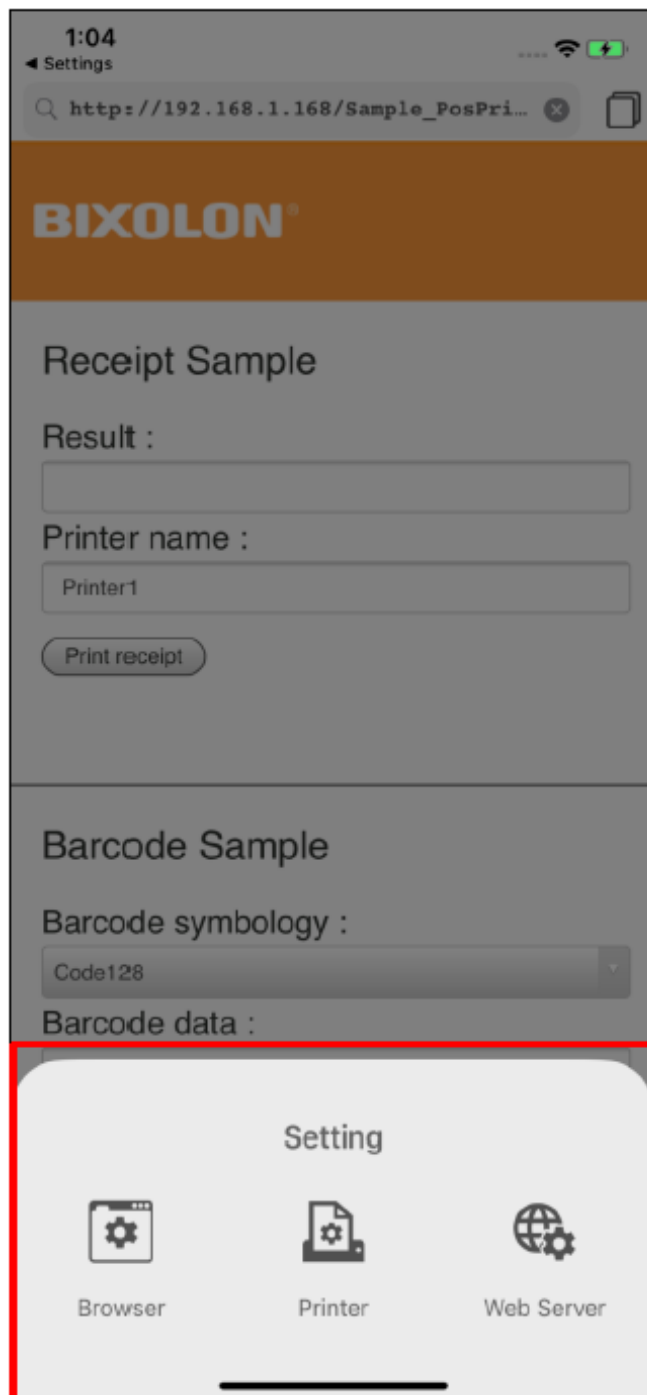
← → 🏠 ↺ ⋮

< launch screen description >



Setting

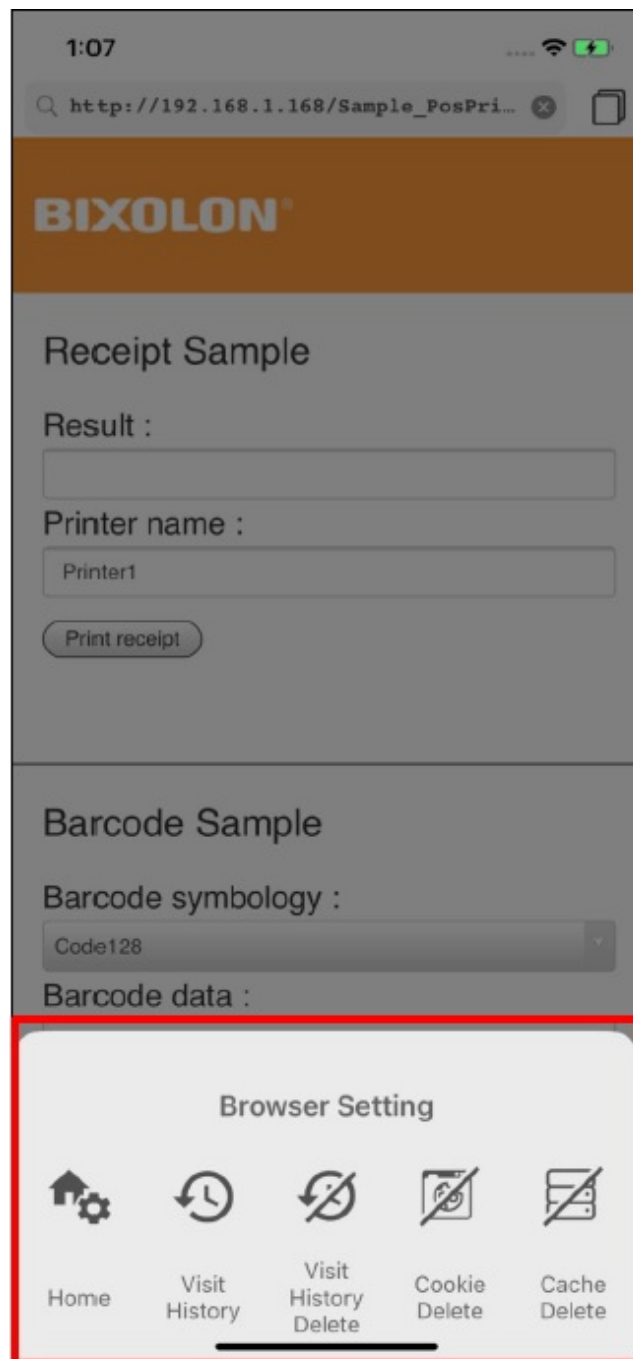
- Below functions are provided in Setting Function.
 - Browser
 - Printer
 - Web Server



Browser Setting

Below functions are provided in Browser Setting Function.

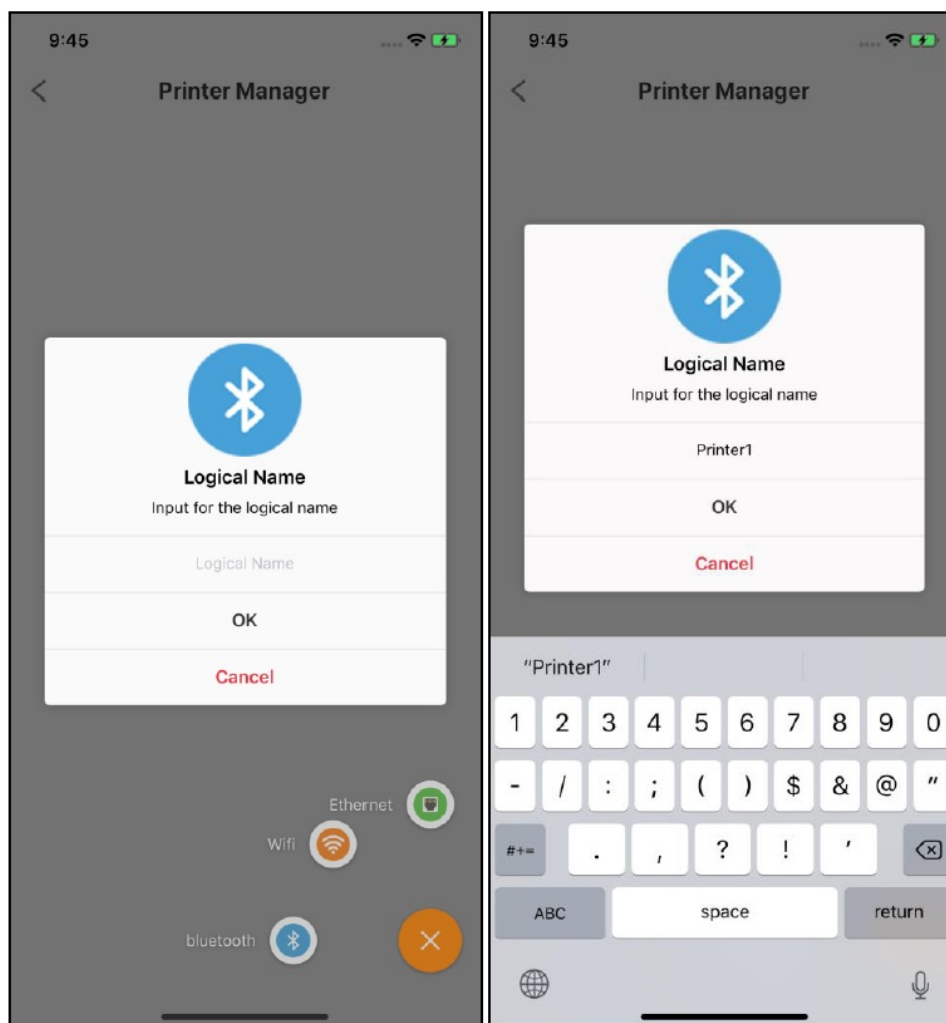
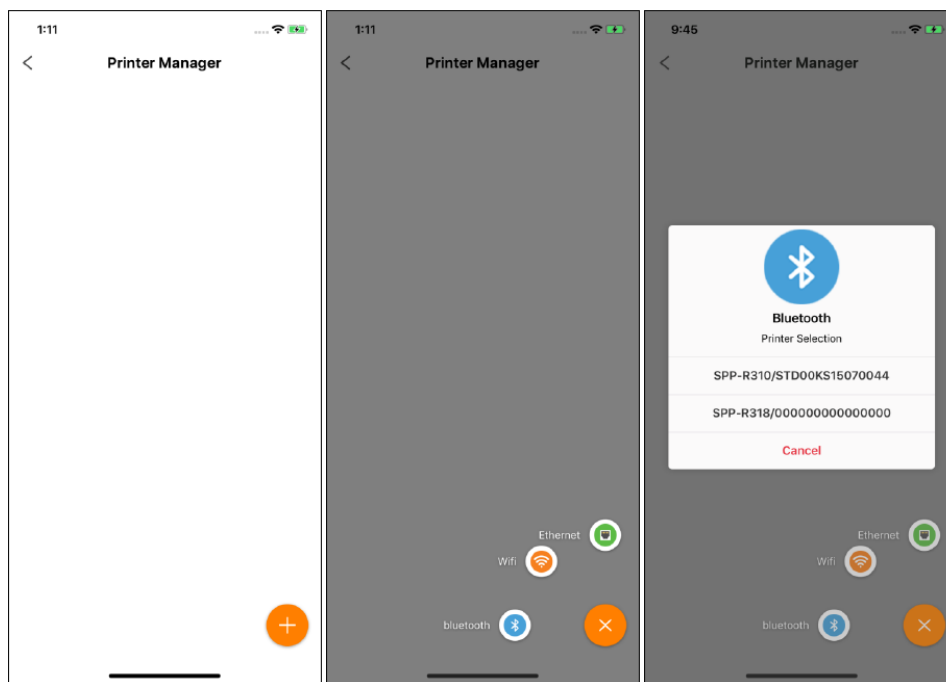
- Home: Start Page Setting
- Visit History
- Visit History Delete
- Cookie Delete
- Cache Delete



Printer Setting

Printer can be registered through Printer Setting. Follow below procedure

1. Click + button located in right bottom of the screen
2. Select Interface
 - Bluetooth / Wi-Fi / Ethernet
3. Available printer list is Popped up
 - If there are no printers which you want to connect in the list, refer to the 4-2 and 4-3 in this manual.
4. Select printer in the printer list
5. Input Logical Name
 - name the registered printer as Logical name
 - Only alphabets and numbers are allowed for the logical name.



< A view after printer registration is finished >



Web Server Setting

Below functions are provided in Web Server Setting Function

Check duplicated request

- If a web application requests duplicated data, it can be checked by the Web Print SDK. The default value is 'Uncheck duplicated request' *

Log

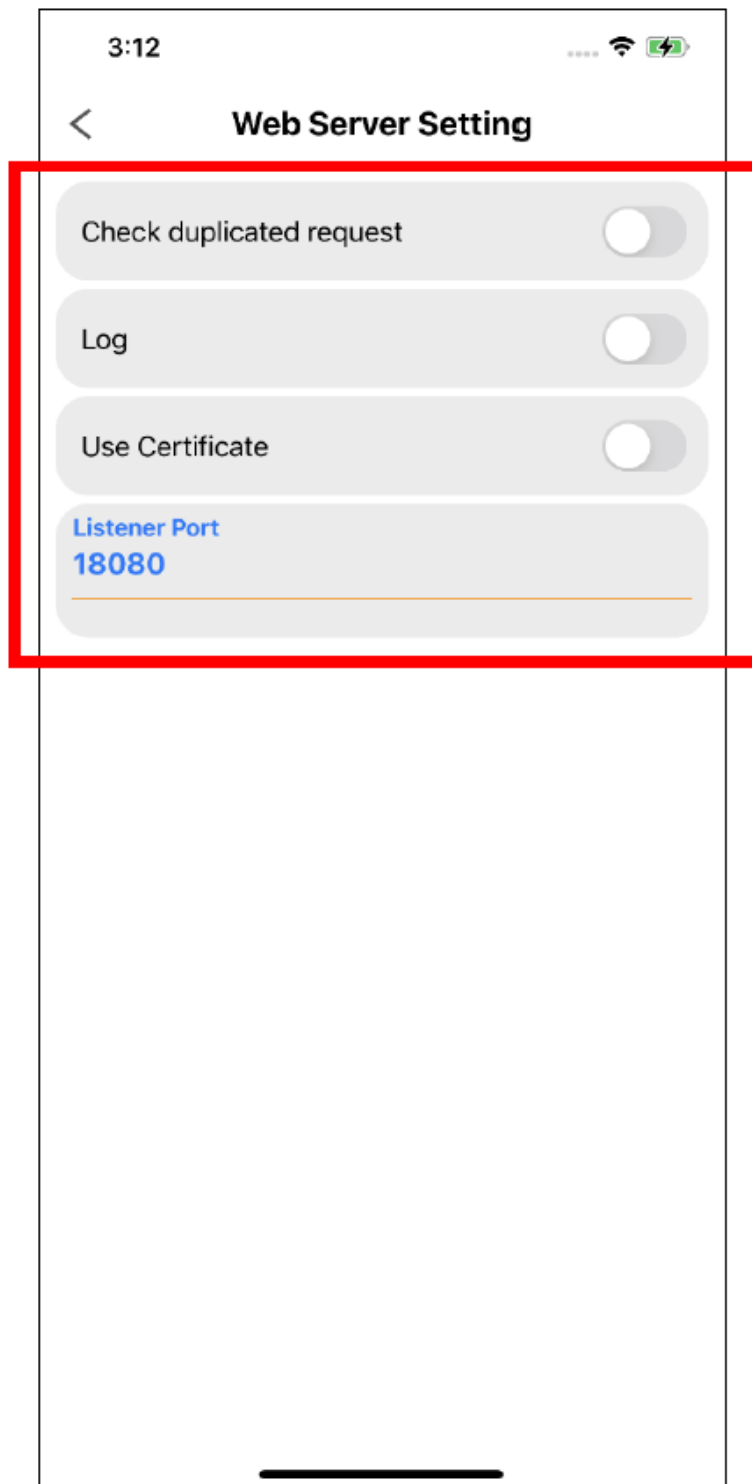
- You can record the log of Web Print SDK. The default value is 'disabled'. *
- Refer to 4-1 'log file check method' to know that the path the logs are saved.

Use Certificate

- Secure Socket Layer (SSL) is used. With this enabled, it requires one-time installation of the certificate. If you do not accept to install it, it is automatically disabled.
- If the certificate is used, HTTPS / WSS request should be used. If the certificate is not used, HTTP / WS request should be used instead.

Set the listening port

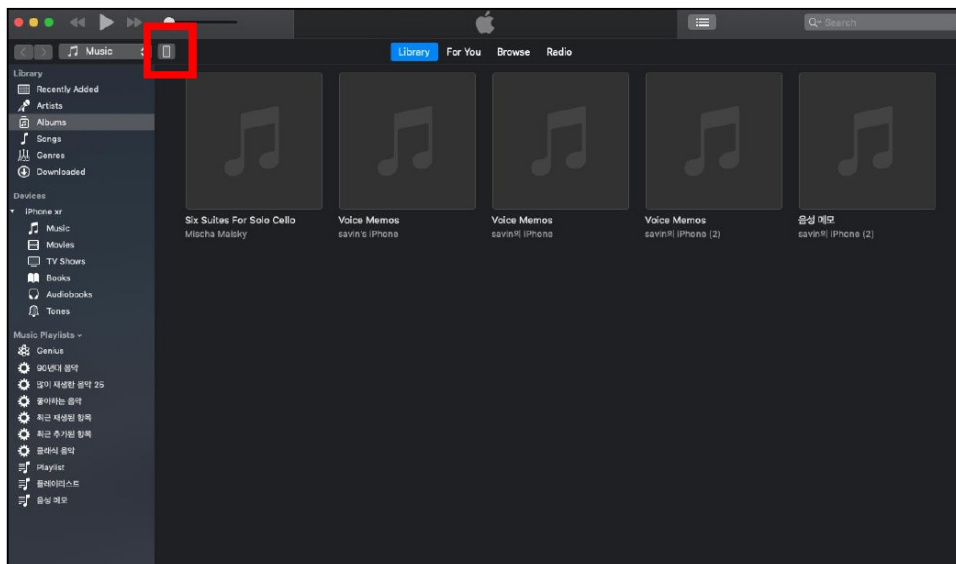
- You can set the listener port of the Web Print SDK. Listener port is the port number on which the Web Print SDK handles data requests of the web application. The default value is 18080. *
- Please restart Web Print SDK after changing Port. If you do not restart the Web Print SDK, the changed port may not be applied.



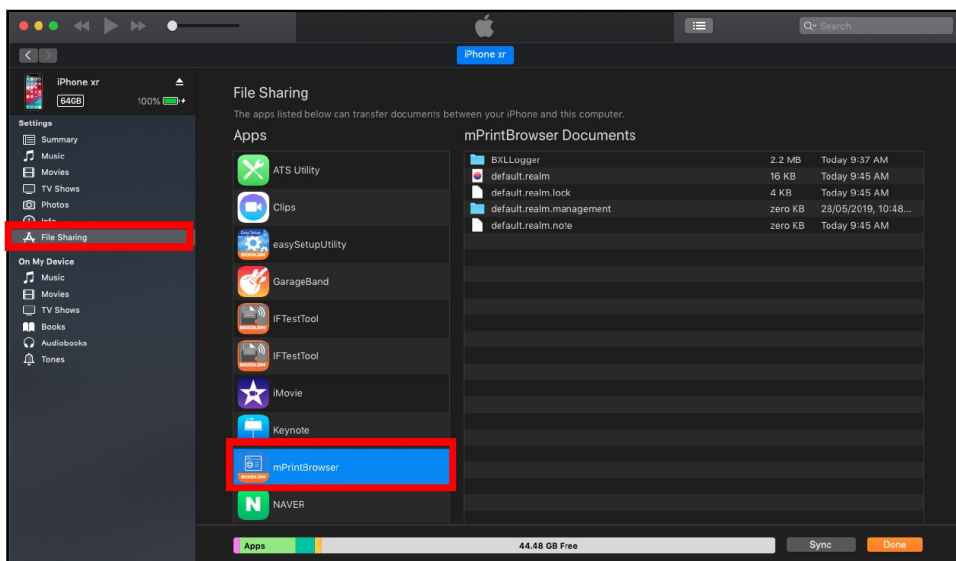
Appendix

Log file check method

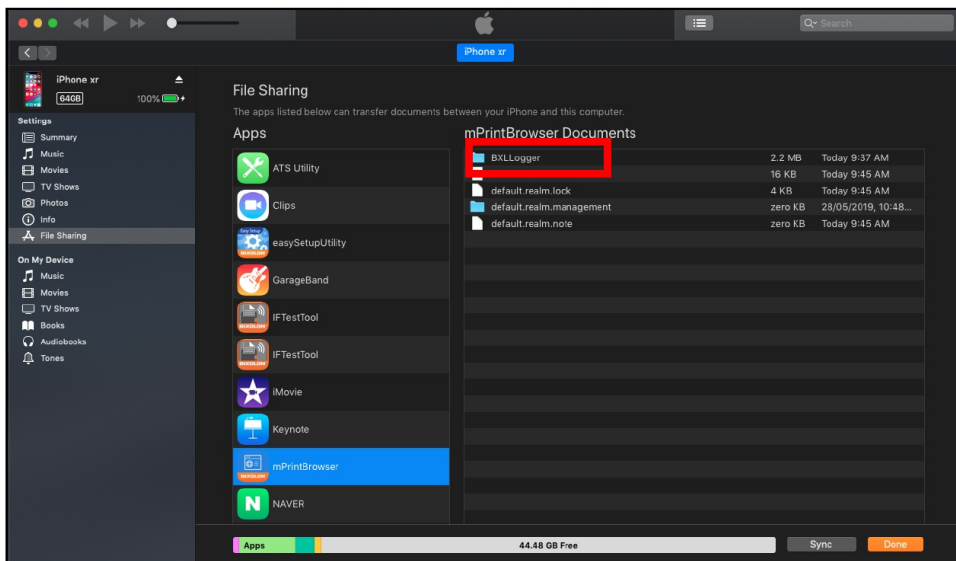
- The description below is based on Max OS X 10.14 (Mojave).
1. Connect the Host device(iPhone/iPad) to the PC via USB
 2. Run iTunes
 3. My Device



4. Click 'File Sharing'
5. Select the Web Print SDK application.



6. Check 'BXLLogger' folder which includes log files.

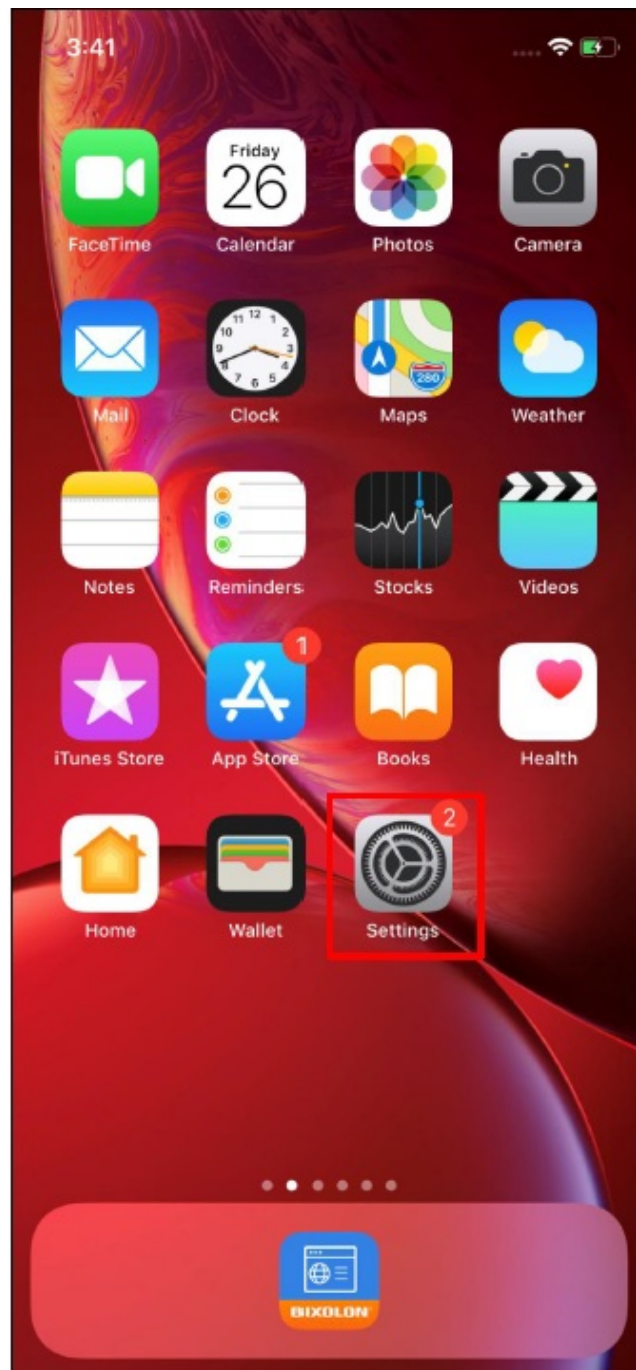


Bluetooth Printer Connection

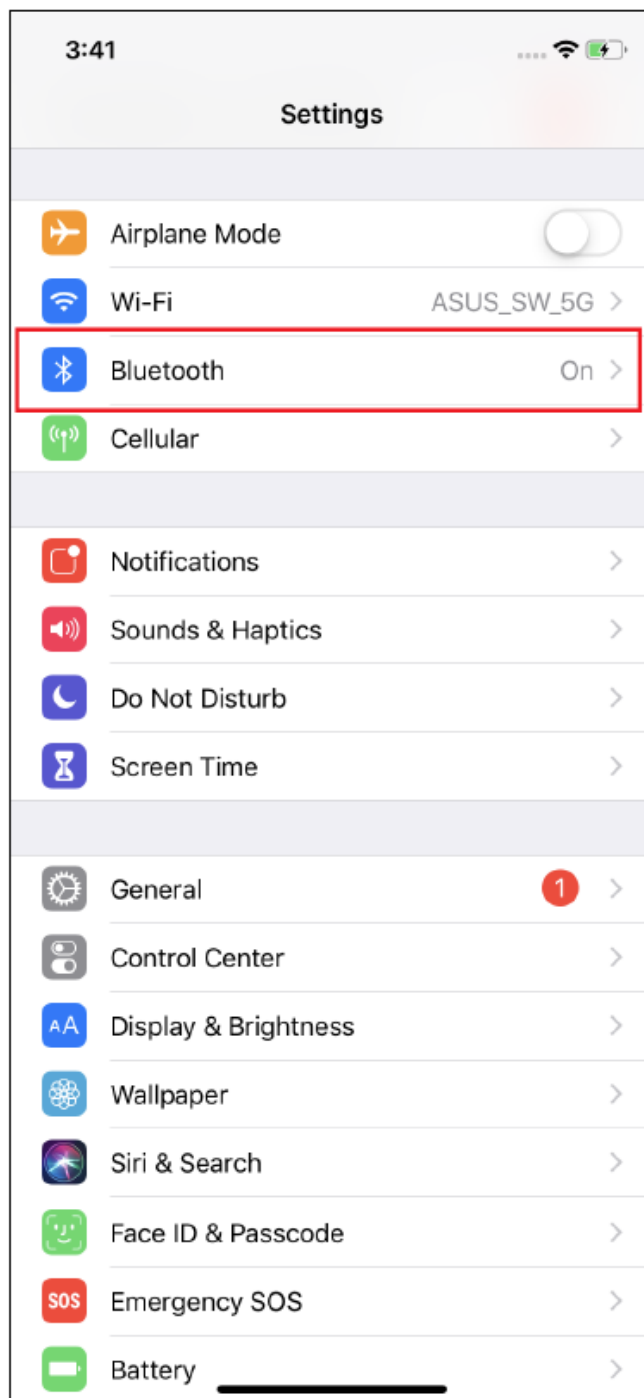
- Bluetooth connection is available with paired host device.

Bluetooth pairing method is as below.

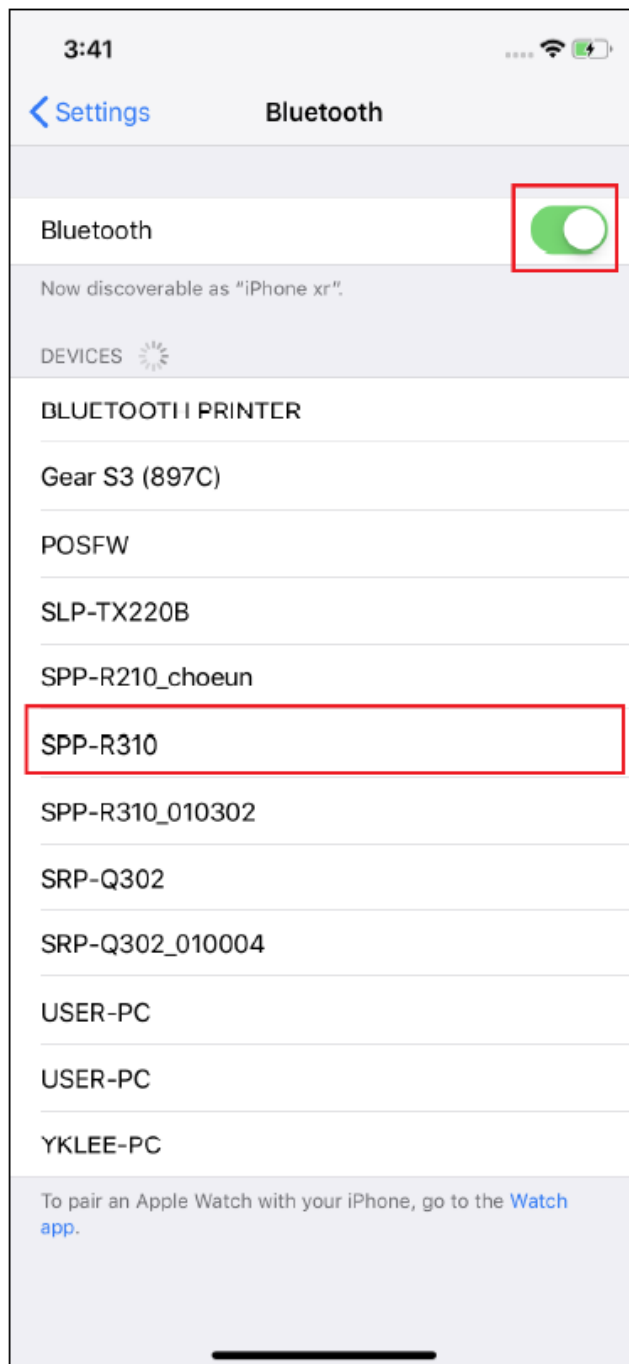
1. Select setting in iOS



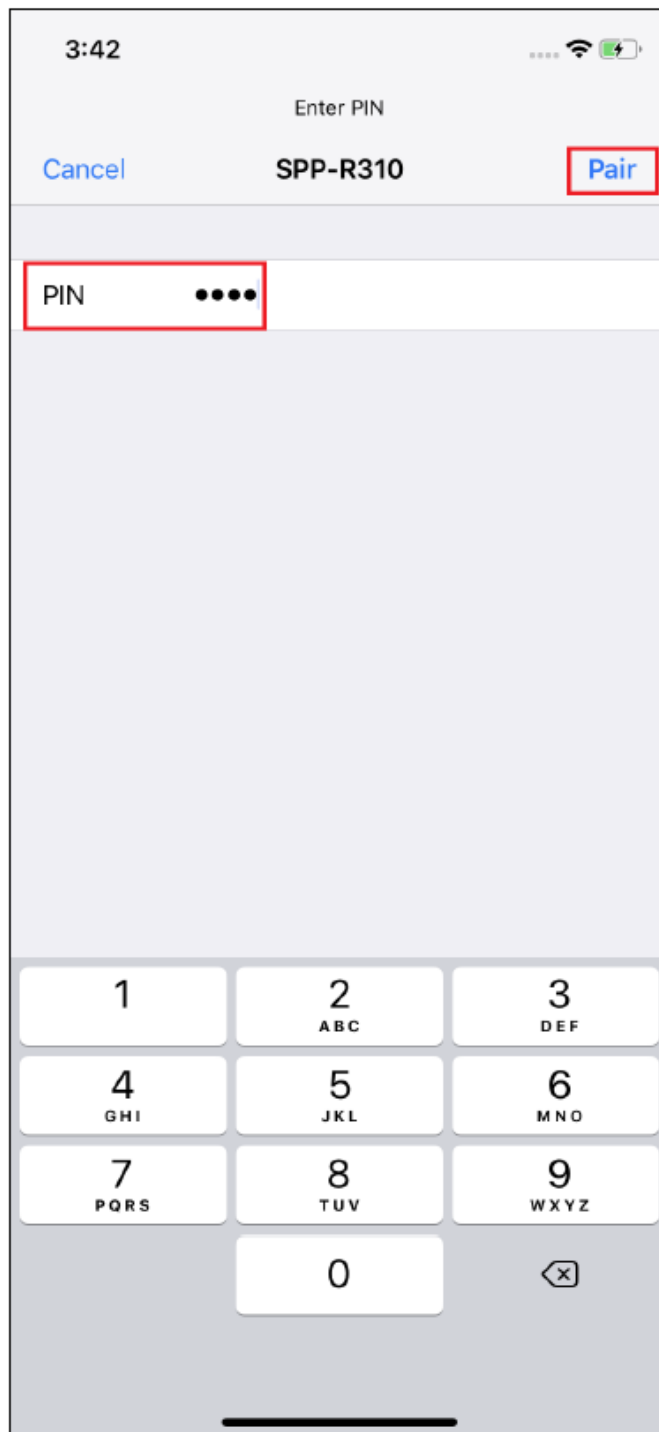
2. Select Bluetooth as follow image



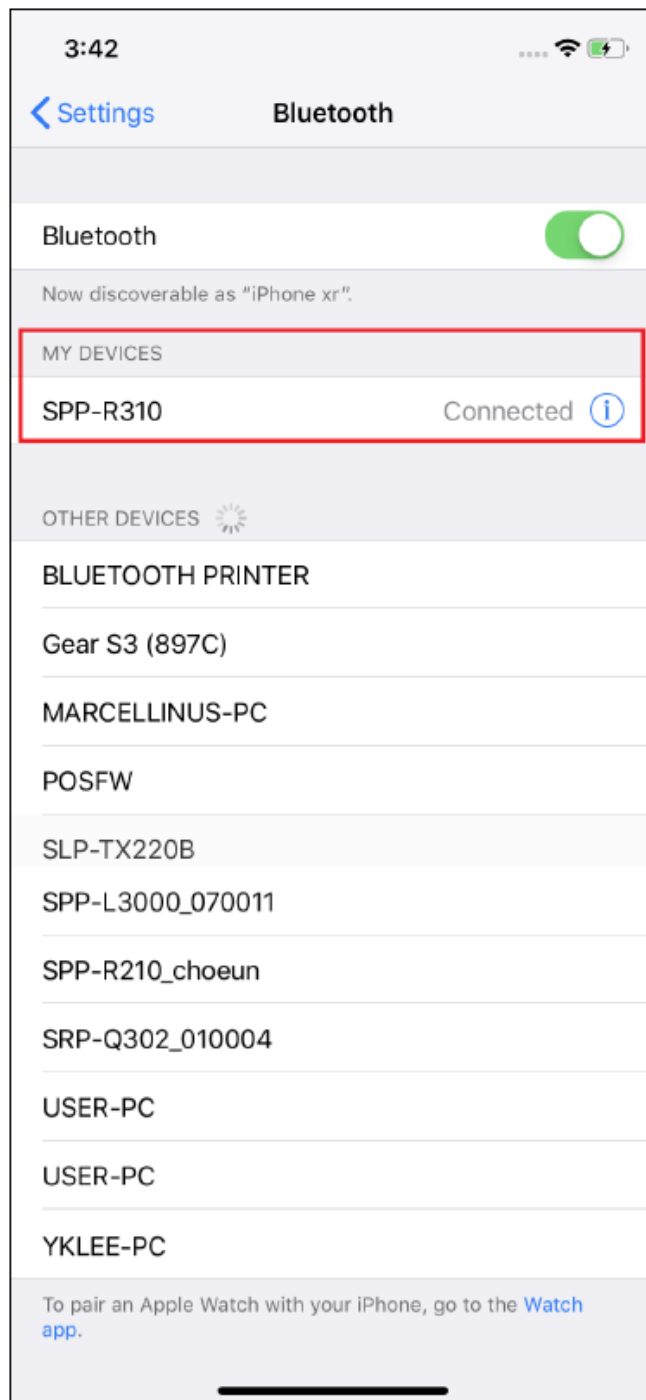
3. Activate the Bluetooth module
4. Select printer to be paired



5. Input PIN(Default: 0000) and touch Pair Button



6. Connected message received(Paring Success)

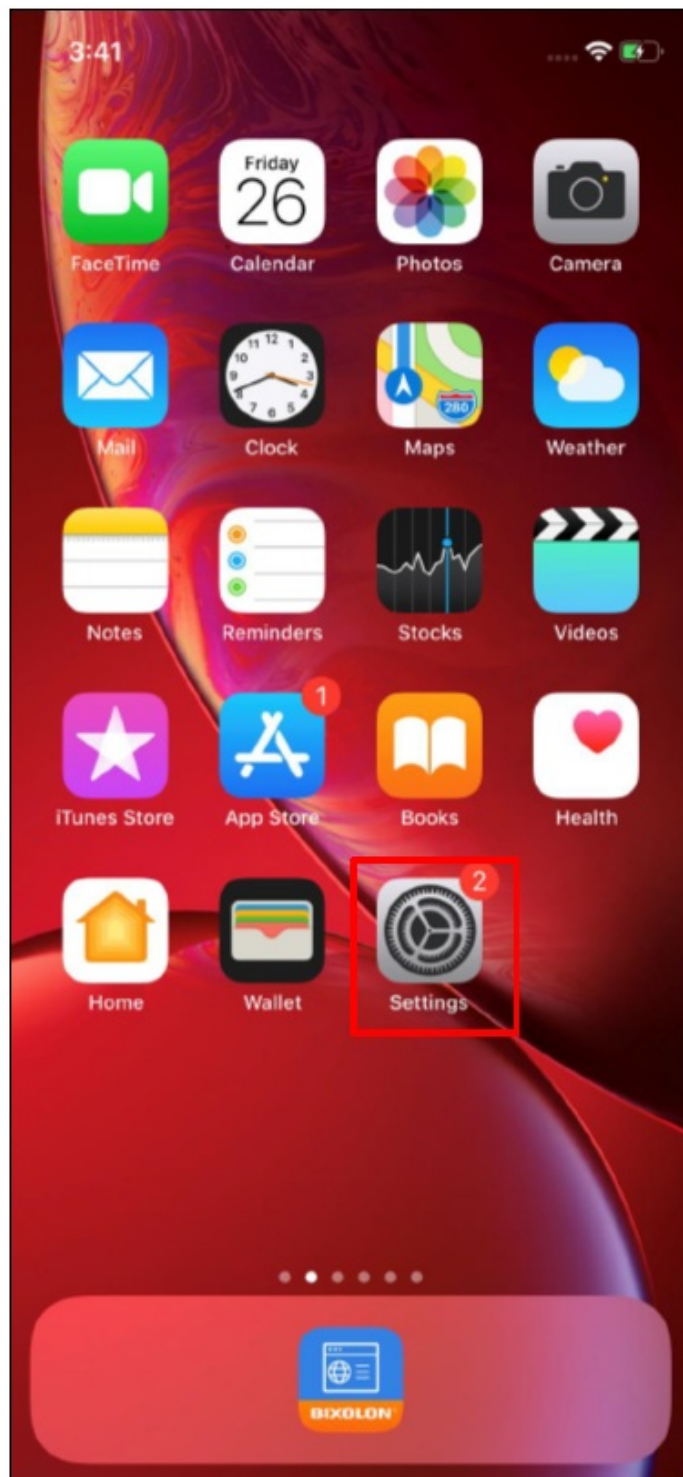


WiFi/Ethernet Printer Connection

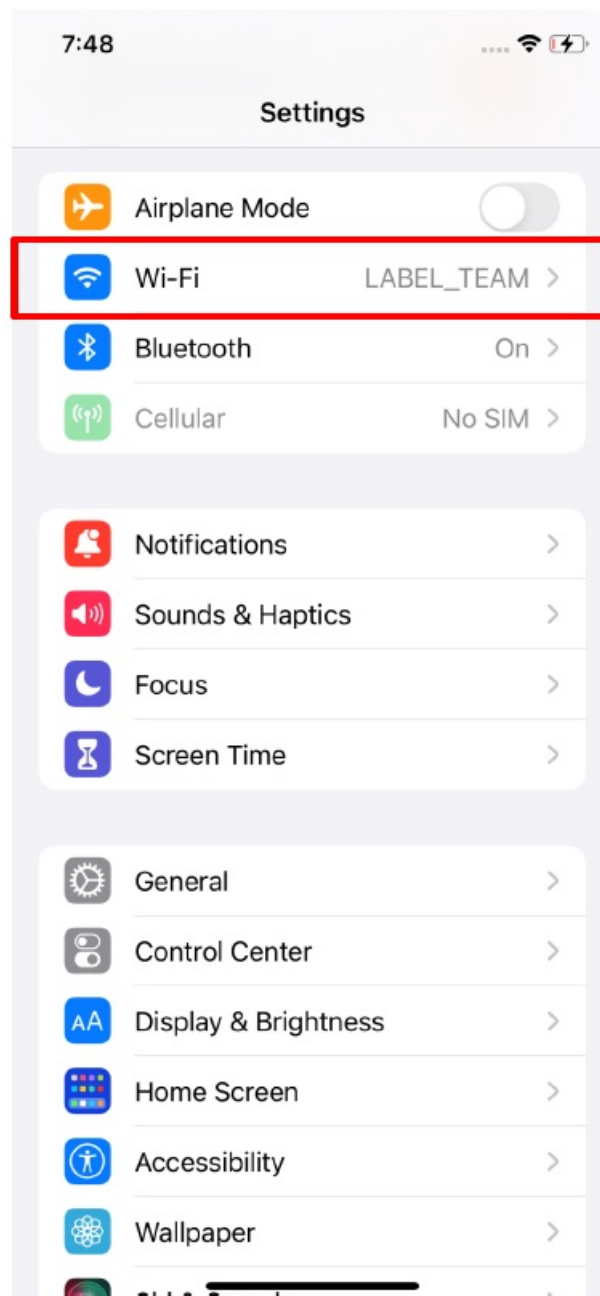
- If printer is connected through wireless LAN/Ethernet networks, the printer and host device must share a same AP.

Connection method through wireless LAN/Ethernet networks is as below

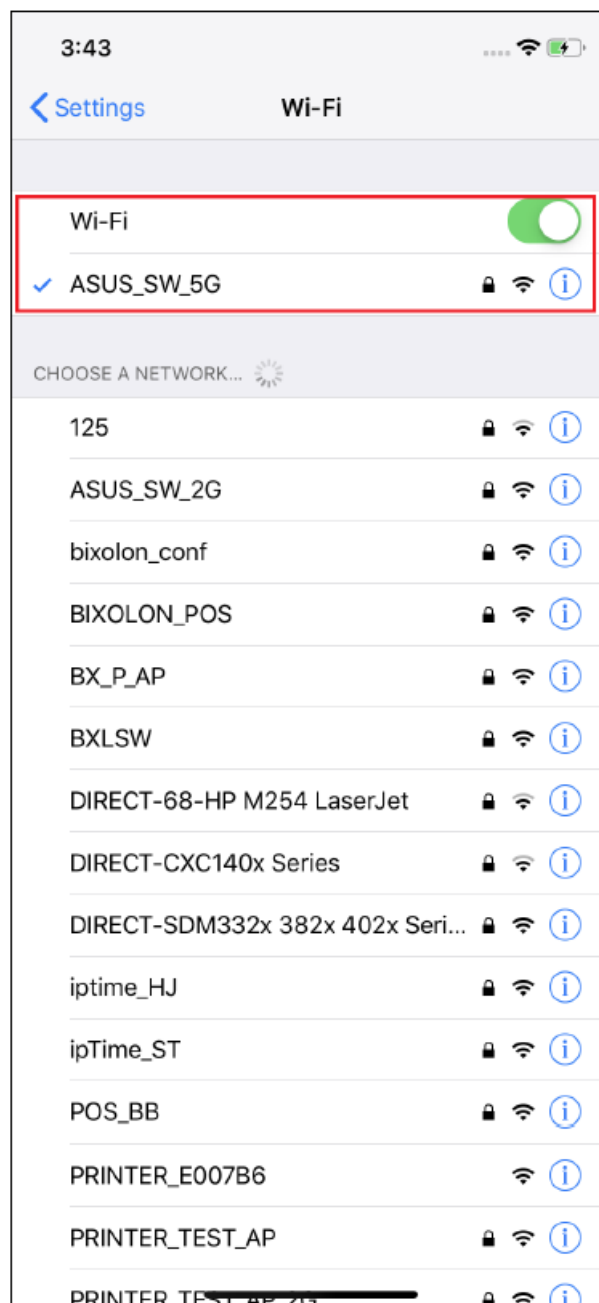
1. Touch Settings in iOS



2. Select Wi-Fi



3. Select AP to be connected



< For the configuration of the printer network, refer to the network user manual which you can download at www.bixolon.com. >


Revision history

Rev.	Date	Description
1.00	2019-08-01	New

1.01	2019-11-28	<ul style="list-style-type: none"> Information of supported printers added : XD5-40t, XD5-43t : XM7-40 Information of supported printers Changed : XL5-40 -> XL5-40CT : XL5-43 -> XL5-43CT
1.02	2020-03-11	<ul style="list-style-type: none"> Information of supported printers added : XM7-20
1.03	2020-09-10	<ul style="list-style-type: none"> Information of RFID type printers added : XT5-40(RFID), XT5-43(RFID), XT5-46(RFID), : XD5-40t(RFID), XD5-43t(RFID)
1.04	2020-09-25	<ul style="list-style-type: none"> Information of supported printers added : SRP-S320
1.05	2020-10-28	<ul style="list-style-type: none"> Information of supported printers added : SRP-S3000/SRP-S3000_LABEL : XD3-40d : XD3-40t : SPP-L310/SPP-L410 : SRP-770III/SRP-E770III : SLP-D420/SLP-D423 : SLP-D220/SLP-D223 : SLP-T400/SLP-T403
1.06	2021-01-14	<ul style="list-style-type: none"> Information of supported printers added : SRP-B300
1.07	2021-02-26	<ul style="list-style-type: none"> Information of supported printers added : SRP-S200 : SRP-S320Hi

1.08	2021-05-24	<ul style="list-style-type: none"> • Change APPname : mPrint Server -> Web Print SDK
1.09	2021-08-10	Support Secure Socket Layer(SSL)
1.10	2021-11-03	<ul style="list-style-type: none"> • Information of supported printers added : SPP-C200
1.11	2022-03-22	<ul style="list-style-type: none"> • Information of supported printers added : SPP-C300 • Supported OS version updated.
1.12	2022-04-26	<ul style="list-style-type: none"> • Information of supported printers added
1.13	2022-06-22	<ul style="list-style-type: none"> • Information of supported printers added
1.14	2022-08-18	<ul style="list-style-type: none"> • Information of supported printers added • Graphic image changed in 4-3 “WiFi/Ethernet Printer Connection”.

Documents / Resources

	<p>BIXOLON Web Print SDK iOS Software [pdf] User Guide Web Print SDK iOS Software, Web Print SDK, iOS Software</p>
---	--

References

-  [BIXOLON | pos printer, mobile printer, label printer](#)