



BITMAIN AntMiner T15 Bitcoin Miner Installation Guide

[Home](#) » [BITMAIN](#) » BITMAIN AntMiner T15 Bitcoin Miner Installation Guide 

Contents

1 AntMiner T15 Bitcoin Miner

1.1 1. Overview

1.2 2. Setting Up the Server

1.3 3. Configuring the Server

1.4 4. Monitoring Your server

1.5 5. Administering Your Server

1.6 FCC Notice (FOR FCC CERTIFIED MODELS):

2 Documents / Resources

3 Related Posts

AntMiner T15 Bitcoin Miner

T15 Server

Installation Guide

Document Version 0.1

Jan. 2019

© Copyright Bitmaintech Pte.Ltd. 2007 – 2018. All rights reserved.

Bitmaintech Pte.Ltd. (Bitmain) reserves the right to make corrections, modifications, enhancements, improvements, and other changes to its products and services at any time and to discontinue any product or service without notice.

Customers should obtain the latest relevant information before placing orders and should verify that such information is current and complete. All products are sold subject to Bitmain's terms and conditions of sale supplied at the time of order acknowledgment.

Bitmain warrants performance of its products to the specifications applicable at the time of sale in accordance with Bitmain's standard warranty. Testing and other quality control techniques are used to the extent Bitmain deems necessary to support this warranty. Except where mandated by government requirements, testing of all

parameters of each product is not necessarily performed.

Bitmain assumes no liability for third-party applications assistance. Customers are responsible for their products and applications using Bitmain components. To minimize the risks associated with customer products and applications, customers should provide adequate design and operating safeguards.

Bitmain does not warrant or represent that any license, either express or implied, is granted under any Bitmain patent right, copyright or other Bitmain intellectual property right relating to any combination, machine, or process in which Bitmain products or services are used. Information published by Bitmain regarding third-party products or services does not constitute a license from Bitmain to use such products or services or a warranty or endorsement thereof. Use of such information may require a license from a third party under the patents or other intellectual property of the third party, or a license from Bitmain under the patents or other intellectual property of Bitmain.

Resale of Bitmain products or services with statements different from or beyond the parameters stated by Bitmain for that product or service voids all express and any implied warranties for the associated Bitmain product or service and is an unfair and deceptive business practice. Bitmain is not responsible or liable for any such statements.

All company and brand products and service names are trademarks or registered trademarks of their respective holders.

All text and figures included in this publication are the exclusive property of Bitmaintech Pte.Ltd. (Bitmain), and may not be copied, reproduced, or used in any way without the express written permission of Bitmain. Information in this document is subject to change without notice and does not represent a commitment on the part of Bitmain. Although the information in this document has been carefully reviewed, Bitmain does not warrant it to be free of errors or omissions. Bitmain reserves the right to make corrections, updates, revisions or changes to the information in this document.

Bitmaintech Pte.Ltd.
Tel:+86-400-890-8855
www.bitmain.com

1. Overview

The T15 server is Bitmain's newest version in the T15 server series. Power supply APW8 is part of T15 server. All T15 servers are tested and configured prior to shipping to ensure easy set up.

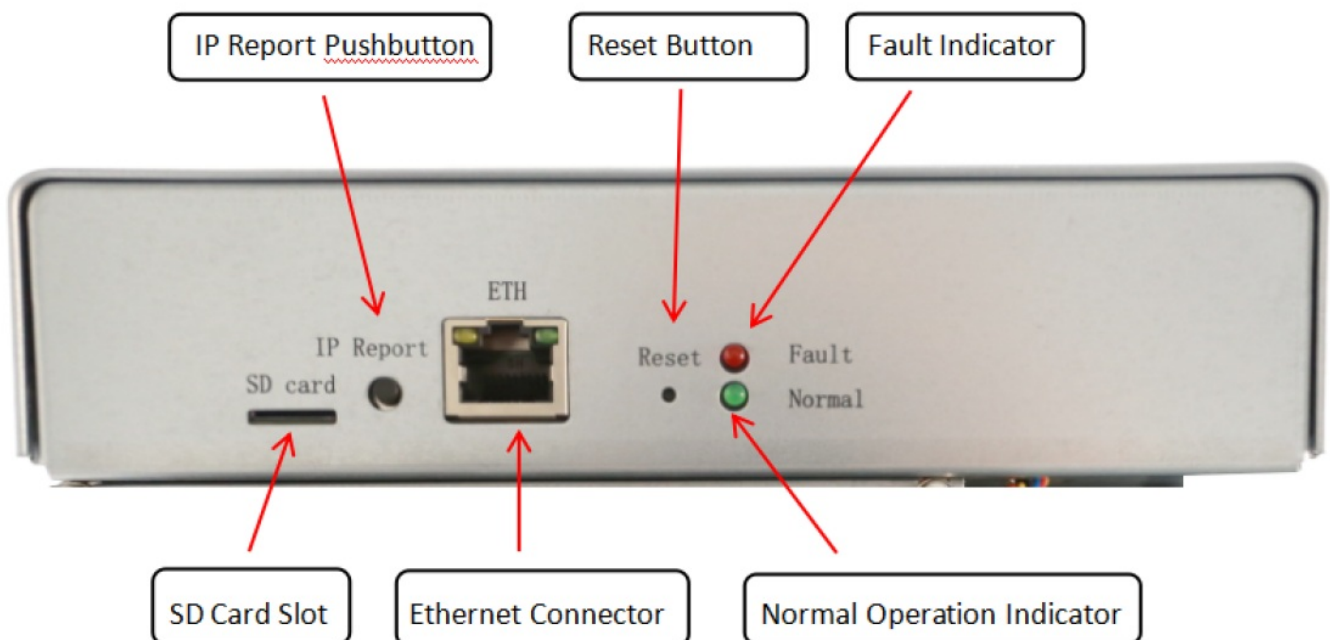
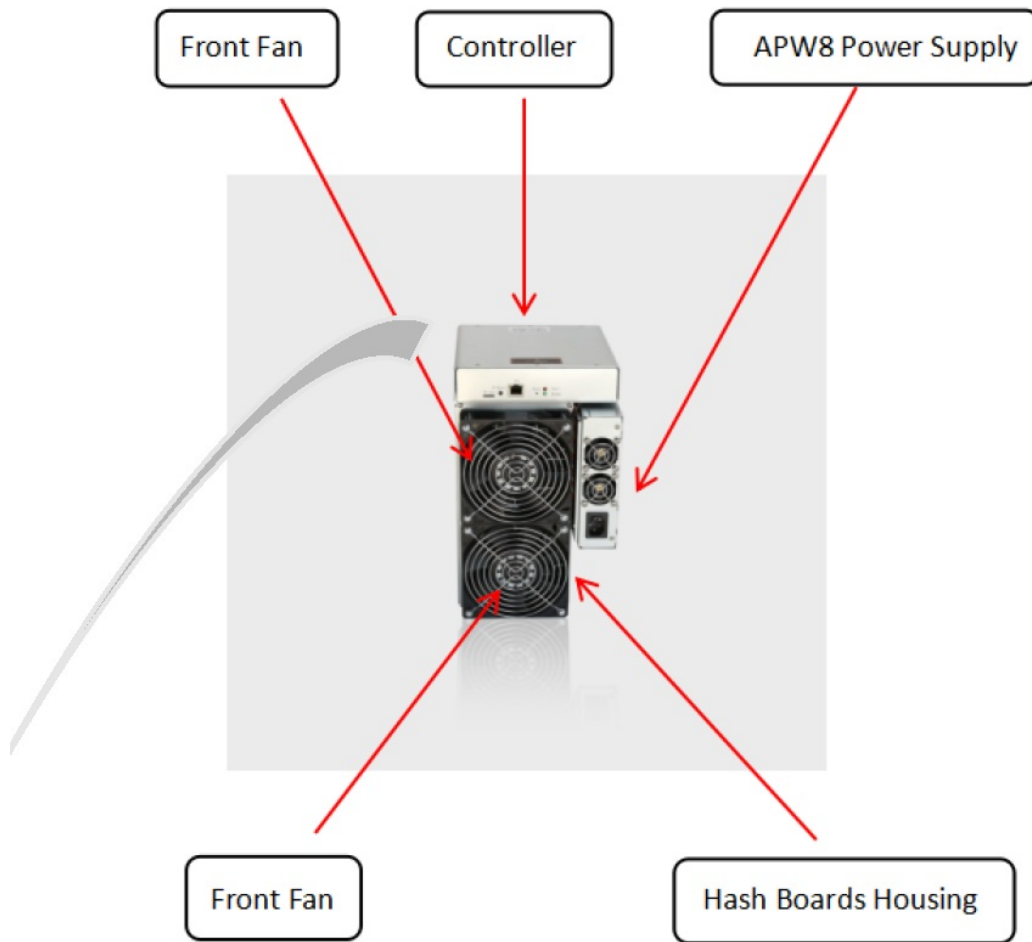


Caution:

1. The socket-outlet shall be installed near the equipment and shall be easily accessible.
2. Please refer to the layout above to place your goods in usage in case of any damage.

1.1 T15 Server Components

The T15 server main components and controller front panel are shown in the following figure:



APW8 Power Supply:



Note:



1. Power supply APW8 is part of T15 server. For detailed parameters, please refer to the specifications below.

2. Additional power cord is needed.

1.2 Specifications

Product Glance	Value			
Crypto Algorithm	SHA256			
	Normal	Low Power		
Hashrate, TH/s	23.00	17.50~21.00		
Reference power on wall, Watt	1541	1050~1260		
Reference power efficiency on wall @25°C, J/TH	67.00	60.00		
Detailed Characteristics		Value		
		Min	Typ	Max
Hashrate & Power				
Hashrate, TH/s	Normal		23.00	23.45
	Low Power		17.50~21	+3% (1-1)
Power efficiency on wall @25°C, J/TH	Normal	67.00		71.69
	Low Power	60.00		64.20
Power efficiency on wall @40°C, J/TH	Normal	70.52		75.46
	Low Power	62.92		67.32
Power on wall, Watt (1-2)	Normal	1541		1770
	Low Power	1050		1456
Power supply AC input voltage, Volt (1-3) 200		200	220	240
Power supply AC input current, Amp (1-4)	Normal		7.00	8.85
	Low Power		4.77	7.28
Power supply Input AC Frequency Range, Hz		47	50	63
Hardware Configuration				
Quantity of hash chips	180			
Quantity of hash boards	3			
Networking connection mode	RJ45 Ethernet 10/100M			
Miner Size (Length*Width*Height, w/o	205*175*279			

package),mm(2-3)				
Net weight, kg (2-2)	6.6			
Noise, dBA @25°C (2-2)				76
Environment Requirements				
Operation temperature,°C	0	0	25	40
Storage temperature,°C	-40	-40	25	85
Operation humidity, RH	5%	5%		95%

Notes:

(1-1) In Low Power Mode, Max Hashrate should be Typ hashrate *103%

(1-2) Min condition: 25°C, min J/TH, typical hashrate

Max condition: 40°C, max J/TH, max hashrate

(1-3) Caution: Wrong input voltage may probably cause miner damaged

(1-4) Typ condition: min reference power, typical AC input voltage

Max condition: max reference power, min AC input voltage

- (2-1) Including PSU size
- (2-2) Including PSU weight
- (2-3) Max condition: Fan is under max RPM(rotation per minute).

2. Setting Up the Server

To set up the server:

The file IPReporter.zip is supported by Microsoft Windows only.

1. Go to the following site:

<https://shop.bitmain.com/support.htm?pid=00720160906053730999PVD2K0vz0693>

2. Download the following file: IPReporter.zip

3. Extract the file.

The default DHCP network protocol distributes IP addresses automatically.

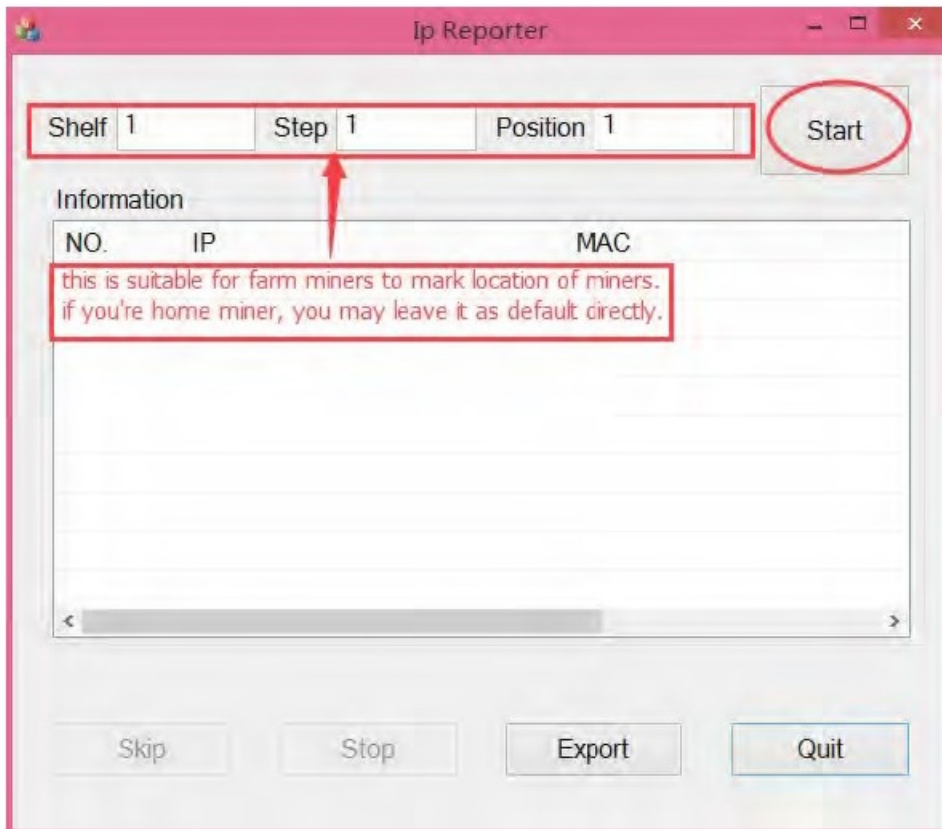
4. Right-click IPReporter.exe and run it as Administrator.

5. Select one of the following options:

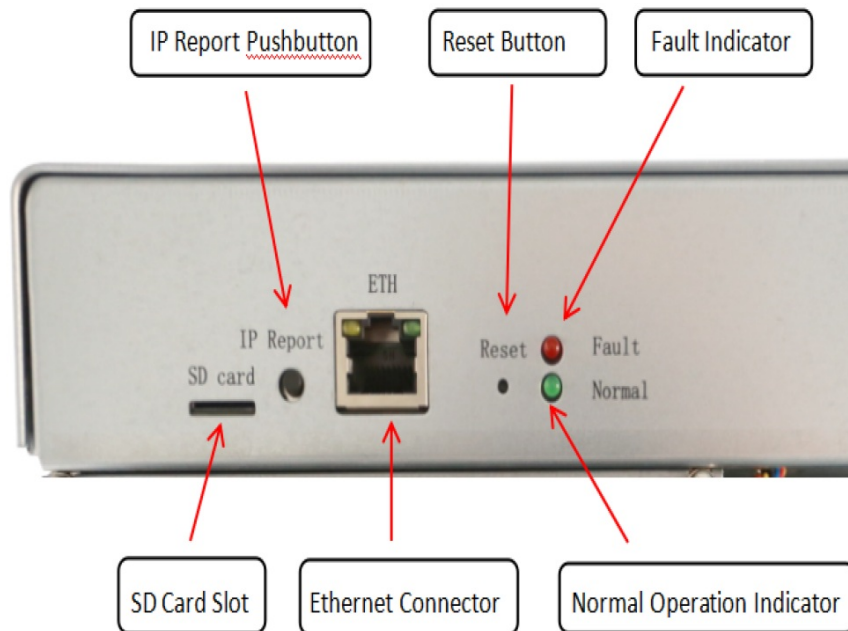
■ Shelf, Step, Position – suitable for farm servers to mark the location of the servers.

■ Default – suitable for home servers.

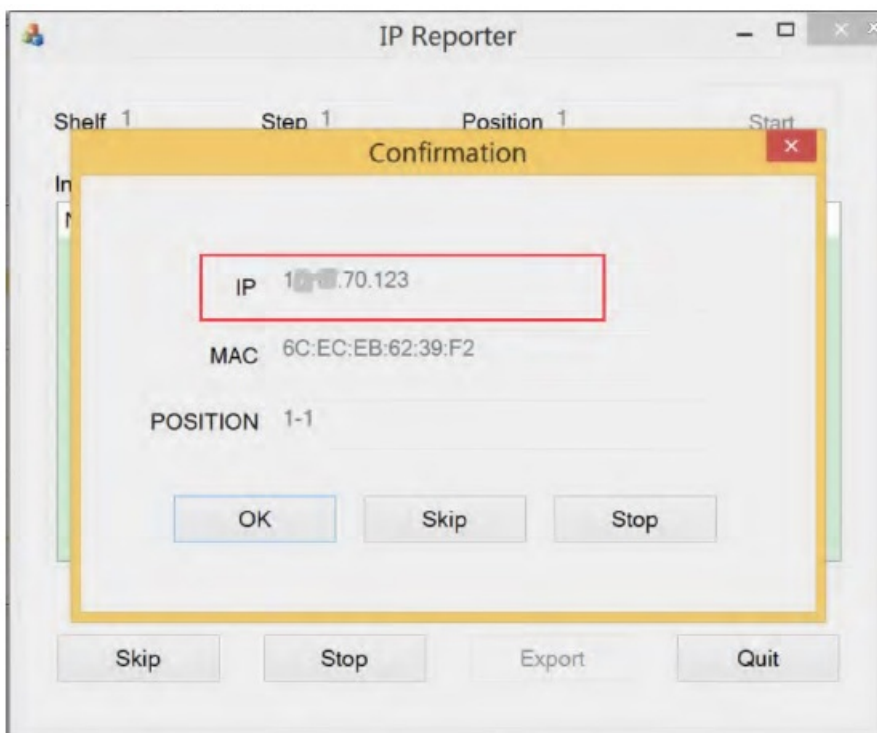
6. Click Start.



7. On the controller board, click the IP Report button. Hold it down until it beeps (about 5 seconds).



The IP address will be displayed in a window on your computer screen.



8. In your web browser, enter the IP address provided.
9. Proceed to login using root for both the username and password.
10. In the Network section, you can assign a DHCP IP address (optional).
11. Click Save & Apply.

System Miner Configuration Miner Status **Network**

Settings Diagnostics

Network Settings

Network setup for Miner

Status **MAC Address:** C4:F3:12:67:7B:17
eth0 **IP:** 192.168.1.101
Netmask: 255.255.255.0

Hostname

Protocol

IP Address

Netmask

Gateway

DNS Servers

Reset Save&Apply

3. Configuring the Server

Setting Up the Pool

To configure the server:

1. click General Settings.

ANTMINER

System **Miner Configuration** Miner Status Network

Miner General Configuration

Pool 1

URL

Worker

Password

Pool 2

URL

Worker

Password

Pool 3

URL

Worker

Password

Setup

Low Power Mode ☒

Reset Save&Apply

2. Set the options according to the following table:

Option	Description
Pool URL	<p>Enter the URL of your desired pool.</p> <div> <p>The T15 server can be set up with three mining pools, with decreasing priority from the first pool (pool 1) to the third pool (pool 3).</p> <p>The pools with low priority will only be used if all higher priority pools are offline.</p> </div>
Worker	Your worker ID on the selected pool.
Password	The password for your selected worker.

3. Click Save & Apply to save and restart the server.

4. Monitoring Your server

To check the operating status of your server:

1. Click the status marked below.

ANTMINER

SystemMiner ConfigurationMiner StatusNetwork

Miner Status

Summary

Elapsed	GH/S(RT)	GH/S(avg)	FoundBlocks	LocalWork	Utility	WU	BestShare
1m7s	18889.06	20174.37	0	4969	2.69	146722.39	157376

Pools

Pool	URL	User	Status	Diff	GetWorks	Priority	Accepted	Diff1#	DiffA#	DiffR#	DiffS#	Rejected	Discarded	Stale	LSDiff	LSTime
0	stratum+tcp://stratum.antpool.com:3333	antminer_1	Alive	65.5K	4	0	3	0	163840	0	0	0	35	0	65536	0:00:39
1	stratum+tcp://stratum.antpool.com:443	antminer_1	Alive	32.8K	2	1	0	0	0	0	0	0	0	0	0	0
2	stratum+tcp://stratum.antpool.com:25	antminer_1	Alive		2	2	0	0	0	0	0	0	0	0	0	0
total					8	3	3	0	163840	0	0	0	35	0		
HW	0								0.0000%							

AntMiner

Chain#	ASIC#	Frequency	GH/S(RT)	HW	Temp(PCB)	Temp(Chip)	ASIC status
1	60	439	6772.80	0	36-52-36-53	51-67-51-68	00000000 00000000 00000000 00000000 00000000 00000000 00000000 0000
2	60	442	6398.97	0	38-53-39-54	53-68-54-69	00000000 00000000 00000000 00000000 00000000 00000000 00000000 0000
3	60	436	5717.29	0	36-50-35-51	51-65-50-66	00000000 00000000 00000000 00000000 00000000 00000000 00000000 0000

Fan#	fan1	fan2
Speed (r/min)	2760	2760

2. monitor your server according to the descriptions in the following table:

Option	Description
ASIC#	Number of chips detected in the chain.
Frequency	ASIC frequency setting.
GH/S(RT)	Hash rate of each hash board (GH/s)
Temp(PCB)	Temperature of each hash board (°C).(Applied only to server with fixed frequency)
Temp(Chip)	Temperature of the chips on each hash board (°C).
ASIC status	One of the following statuses will appear: <ul style="list-style-type: none">● O - indicates OK● X - indicates error● - - indicates dead

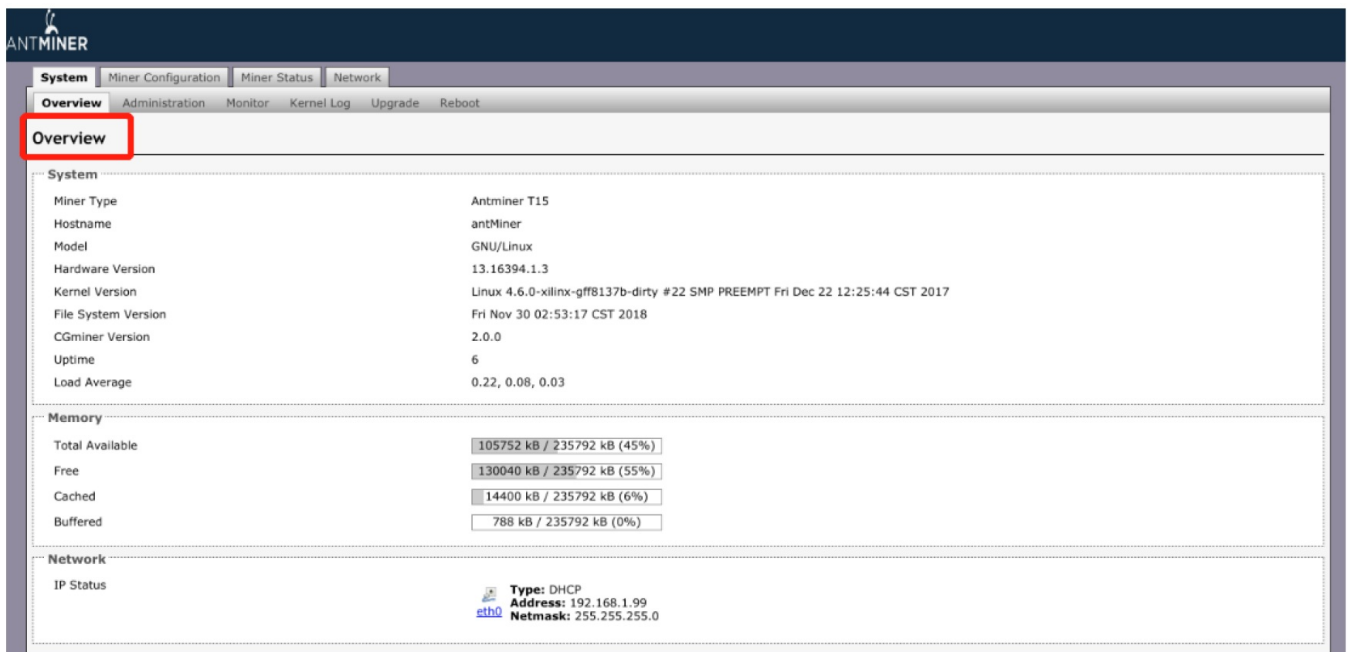
5. Administering Your Server

5.1 Checking Your Firmware Version

To check your firmware version:

1. In System, click the Overview tab.

2. File System Version displays the date of the firmware your server use. In the example below, the server is using firmware version 20181130.

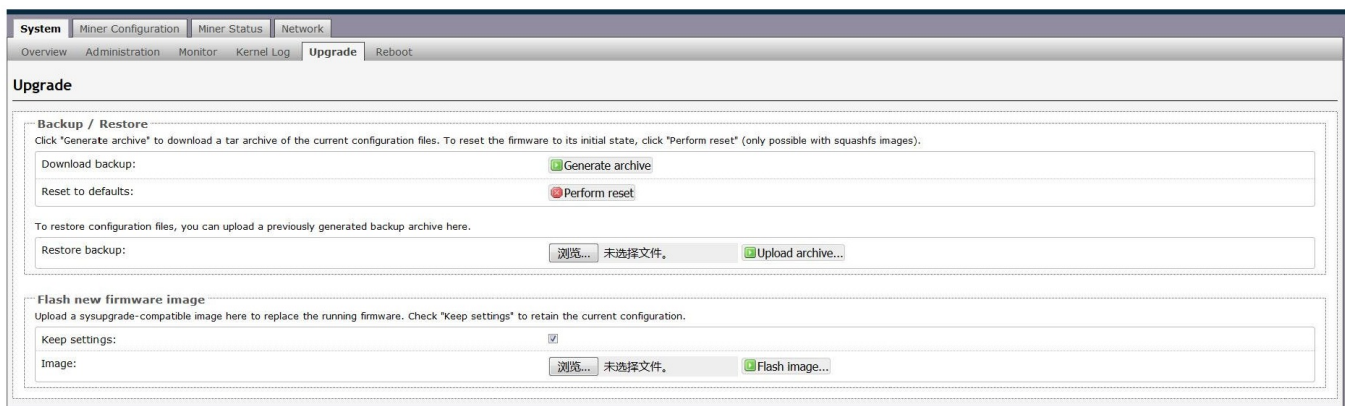


5.2 Upgrading Your System

Make sure that the T15 server remains powered during the upgrade process. If power fails before the upgrade is completed, you will need to return it to Bitmain for repair.

To upgrade the server's firmware:

1. In System, click Upgrade.

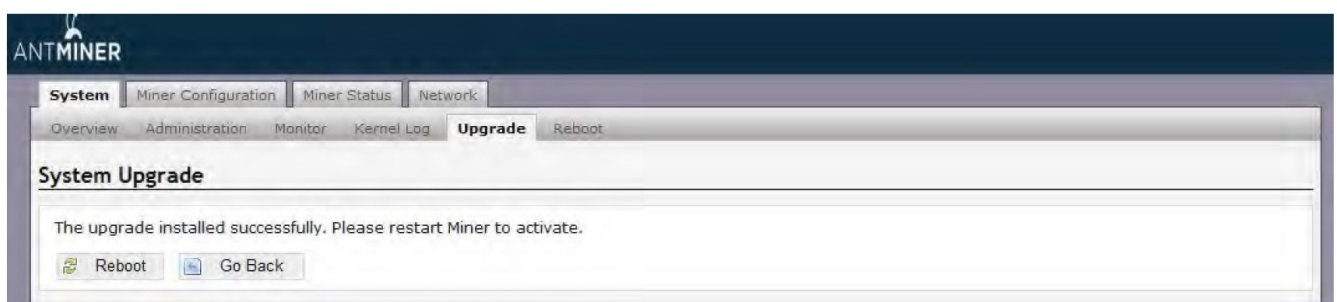


2. For Keep Settings:

- Select the check box to keep your current settings (default).
- Clear the check box to reset the server to default settings.

3. Click the (Browse) button and navigate to the upgrade file. Select the upgrade file, then click Flash image. A message appears notifying you if the T15 firmware can be upgraded and if yes, will then proceed to flash the image.

4. When the upgrade is completed, the following message appears:



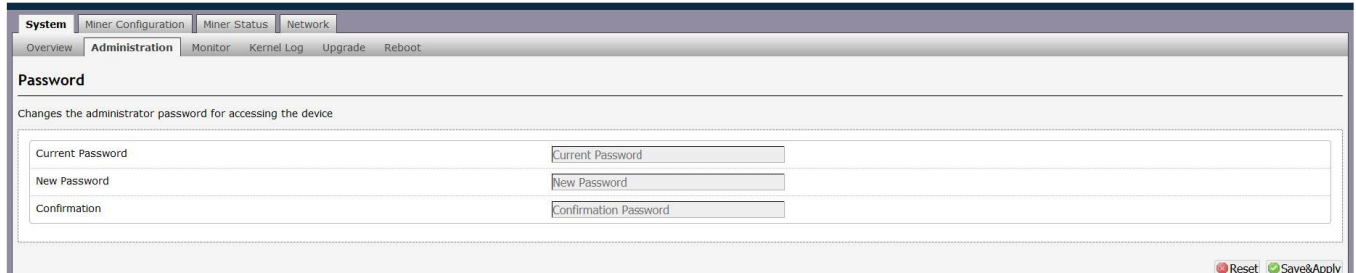
5. Click one of the following options:

- Reboot - to restart the server with the new firmware.
- Go Back - to continue mining with the current firmware. The server will load the new firmware next time it is restarted.

5.3 Modifying Your Password

To change your login password:

1. In System, click the Administration tab.
2. Set your new password, then click Save & Apply.

The screenshot shows a web interface for system administration. At the top, there are tabs for 'System', 'Miner Configuration', 'Miner Status', and 'Network'. Under the 'System' tab, there are sub-tabs: 'Overview', 'Administration' (which is selected), 'Monitor', 'Kernel Log', 'Upgrade', and 'Reboot'. The main heading is 'Password'. Below it, a text line says 'Changes the administrator password for accessing the device'. There is a form with three rows: 'Current Password' with a text input field, 'New Password' with a text input field, and 'Confirmation' with a text input field. At the bottom right of the form area, there are two buttons: 'Reset' (with a red circular icon) and 'Save&Apply' (with a green circular icon).

5.4 Restoring Initial Settings

To restore your initial settings

1. Turn on the server and let it run for 5 minutes.
2. On the controller front panel, press and hold the Reset button for 10 seconds.

Resetting your server will reboot it and restore its default settings. The red LED will automatically flash once every 15 seconds if the reset is operated successfully.

FCC Notice (FOR FCC CERTIFIED MODELS):


This device complies with part 15 of the FCC Rules. Operation is subject to the following two conditions: (1) This device may not cause harmful interference, and (2) this device must accept any interference received, including interference that may cause undesired operation.

Note:

This equipment has been tested and found to comply with the limits for a Class A digital device, pursuant to part 15 of the FCC Rules. These limits are designed to provide reasonable protection against harmful interference when the equipment is operated in a commercial environment. This equipment generates, uses, and can radiate radio frequency energy and, if not installed and used in accordance with the instruction manual, may cause harmful interference to radio communications. Operation of this equipment in a residential area is likely to cause harmful interference in which case the user will be required to correct the interference at his own expense.

EU WEEE: Disposal of Waste Equipment by Users in Private Household in the European Union This symbol on the product or on its packaging indicates that this product must not be disposed of with your other household waste. Instead, it is your responsibility to dispose of your waste equipment by handing it over to a designated collection point for the recycling of waste electrical and electronic equipment. The separate collection and recycling of your waste equipment at the time of disposal will help to conserve natural resources and ensure that it is recycled in a manner that protects human health and the environment. For more information about where you can drop off your waste equipment for recycling, please contact your local city office, your household waste disposal service or the shop where you purchased the product.

Documents / Resources

<div><div>BITMAIN</div><div></div><div><div>T15 Server</div><div>Installation Guide</div><div><small>Document Version: 1.0 Date: 2018-01-10 Copyright © 2018 Bitmain Limited. All rights reserved. This document is the property of Bitmain Limited. It contains confidential information and is intended for internal use only. It is not to be distributed outside the company without prior written permission. The information in this document is subject to change without notice. Bitmain Limited reserves the right to modify the contents of this document at any time without notice. This document is provided "as is" without any warranty, express or implied, including the warranty of fitness for a particular purpose. Bitmain Limited shall not be liable for any damages, including general, special, incidental, or consequential damages, arising from the use of this document.</small></div></div></div>	<div><div>BITMAIN AntMiner T15 Bitcoin Miner [pdf] Installation Guide</div><div>AntMiner T15, Bitcoin Miner</div></div>
--------------------------------------------------------------------------------------------------------------------------------------------------------------------------------------------------------------------------------------------------------------------------------------------------------------------------------------------------------------------------------------------------------------------------------------------------------------------------------------------------------------------------------------------------------------------------------------------------------------------------------------------------------------------------------------------------------------------------------------------------------------------------------------------------------------------------------------------------------------------------------------------------------------------------------------------------------------------------------------------------------------------------------------	-----------------------------------------------------------------------------------------------------------------------------------------