




BITMAIN AntMiner S7 4.73TH Bitcoin ASIC Miner User Manual

[Home](#) » [BITMAIN](#) » BITMAIN AntMiner S7 4.73TH Bitcoin ASIC Miner User Manual 

BITMAIN

AntMiner S7 Manual

AntMiner Manual

Last updated: 9/23/2015

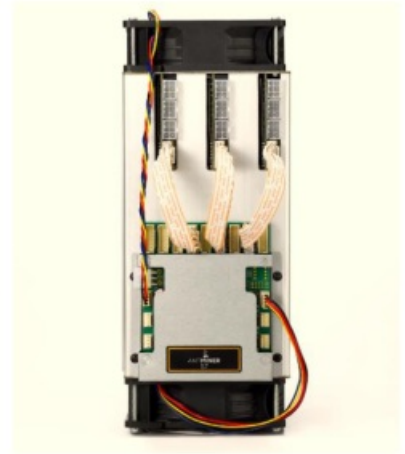


Contents

- [1 Overview](#)
- [2 Features](#)
- [3 Power Supply](#)
- [4 Connect to Miner](#)
- [5 Miner Configuration](#)
- [6 Miner Status](#)
- [7 System Configuration and status](#)
- [8 Documents / Resources](#)
- [9 Related Posts](#)

Overview

The AntMiner S7 with 4.86Th/s is Bitmain's newest iteration, using the new state-of-the-art BM1385 chip with full-customs made, powered by ultra-low power 28nm technology. S7 are tested and configured prior to shipping to make it easier for customers to set up.



Please note:

1. You must prepare your own ATX Power Supply

Features

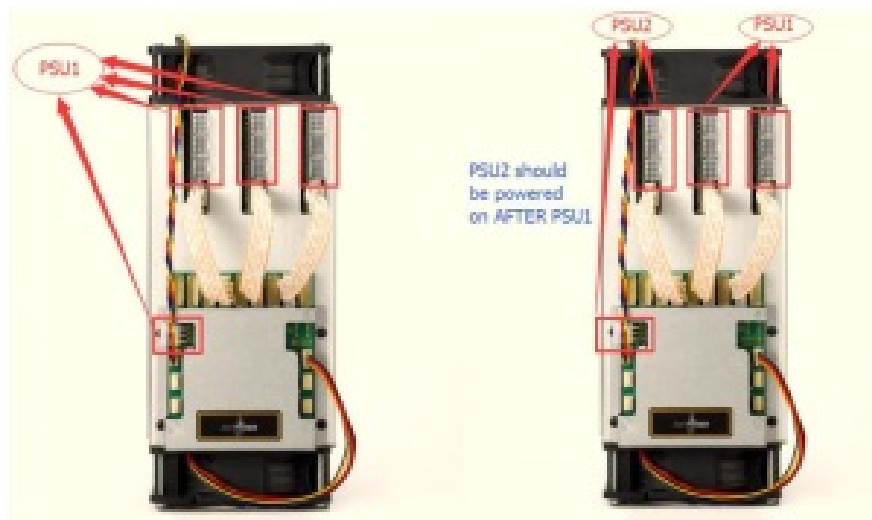
Ideal Hash Rate (GH/s)	4860 GH/s
Default chip clock (M)	600
Input Voltage (V)	12.00
Estimate power on the wall (W) — assume with APW3, 93% efficiency, 25°C ambient temp)	1210W
Estimate efficiency on the wall (J/GH)	0.25
Dimensions (mm)	301 mm x 123 mm x 155 mm
Weight (kg)	4
Operating ambient temperature (°C)	0 ~ 40

Notes: Input voltage should not be less than 12.00V and all the 3 PCI-E connectors are all required on each hash board since it is based on serial power solution and there is no DC/DC inside the miner. The higher input voltage will cause higher mining efficiency.

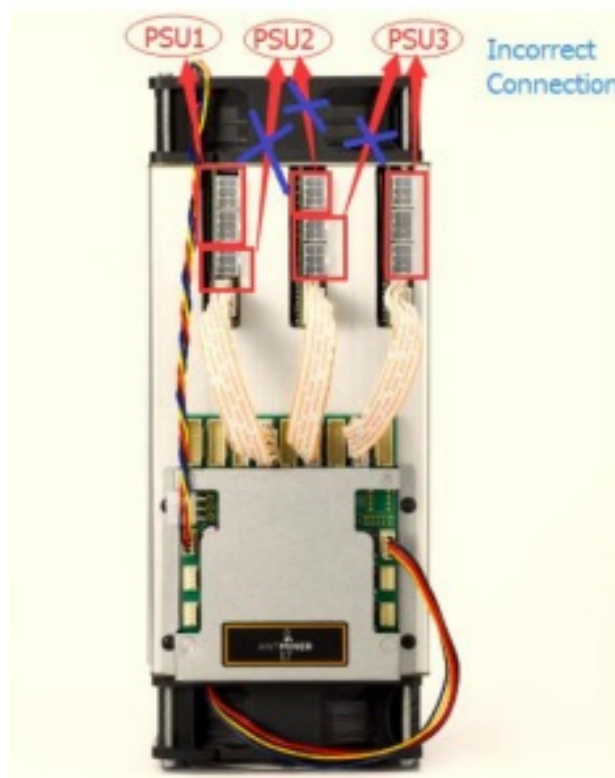
Power Supply

Each AntMiner S7 has 9 PCI-e connectors for +12V/15A DC STABLE input on hash boards and 1 PCI-e connector on the controller, all the 10 PCI-e connectors are required. Do not connect more than one PSU to the same hashing board to prevent possible damage and instability. And be sure to connect the hash boards to the PSU first and then connect the controller to PSU. See the below screenshot for the CORRECT and INCORRECT connection of the PCI-E connectors:

Correct connection:



Incorrect connection:



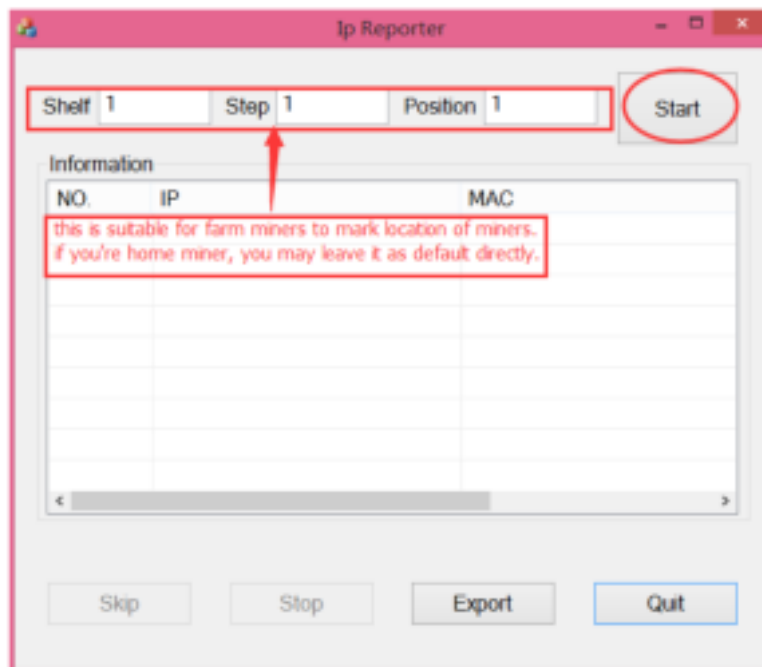
Connect to Miner

Step 1. The default DHCP network protocol distributes IP addresses automatically. Please download IPReporter.zip from minerlink.com, then please follow the below steps to find out the IP of the miner.

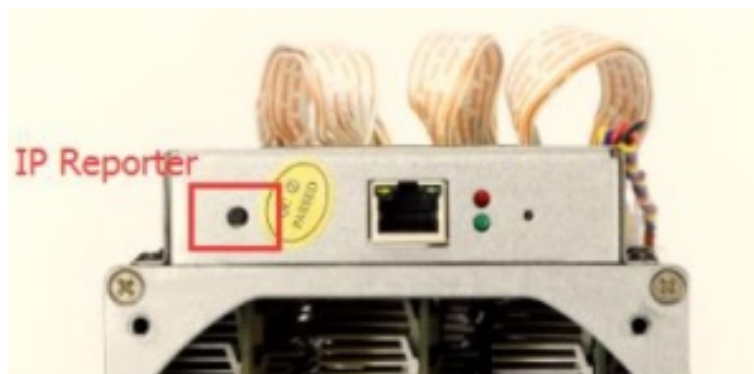
1. Extract the file and double click 'IPReporter.exe'.

The 'Shelf, Step, Position' options are suitable for farm miners to mark the location of the miners. For home miners, it can be left as default.

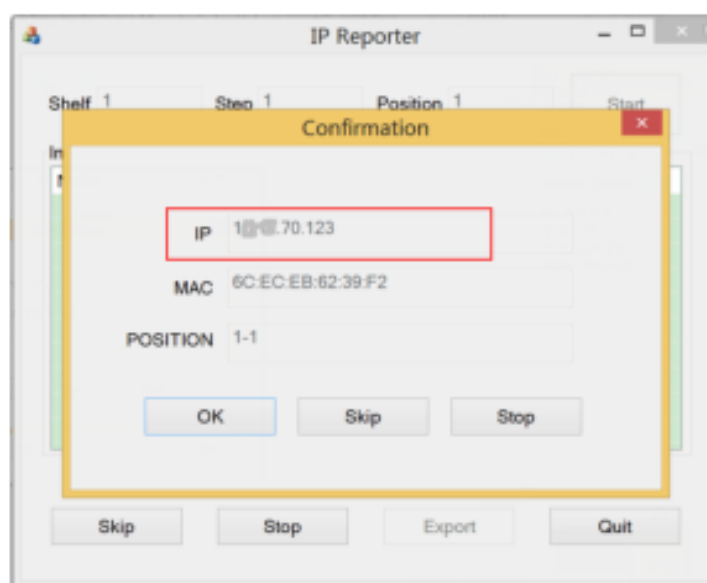
Then click 'Start'.



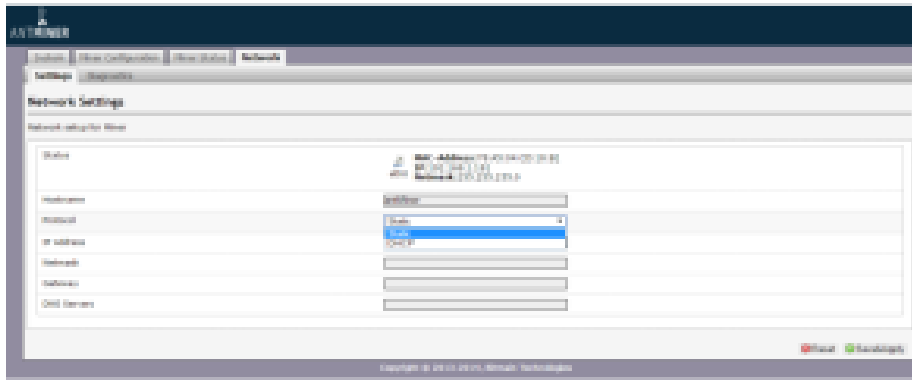
2. Press the IP Reporter button on the IO board and you'll hear a beep sound:



3. Check your PC, you'll see the IP address showing in the pop-up window.



Step 2. Enter the IP address provided into your WEB browser and proceed to login using 'root' for both the username and password. In the 'Network' section, you can assign a 'Static' IP address if you like. Click 'Save&Apply' after modifying it.



Miner Configuration

5.1 Pool Setting

You can configure your miner through 'Miner Configuration->General Settings'. Pool URL- Enter the URL of your desired pool in this column.

Worker- This is your worker ID on the selected pool.

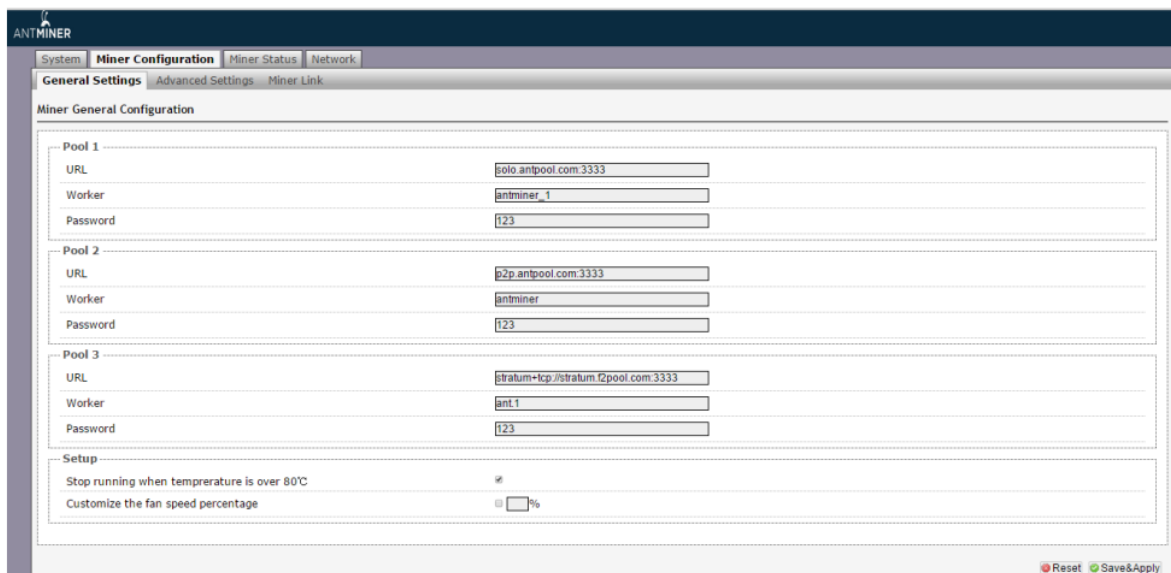
Password- This is the password for your selected worker.

Comment:

4.1.1 The AntMiner S7 can be set up with three mining pools, with decreasing priority from the first pool (pool 1) to the third pool (pool 3). **The pools with low priority will only be used if all higher priority pools have gone offline.**

4.1.2 When 'Stop running when the temperature is over 80°C' is checked, the miner will stop mining when the temperature exceeds 80°C to protect the miner. If it's unchecked, the miner will still mine even at high temperatures.

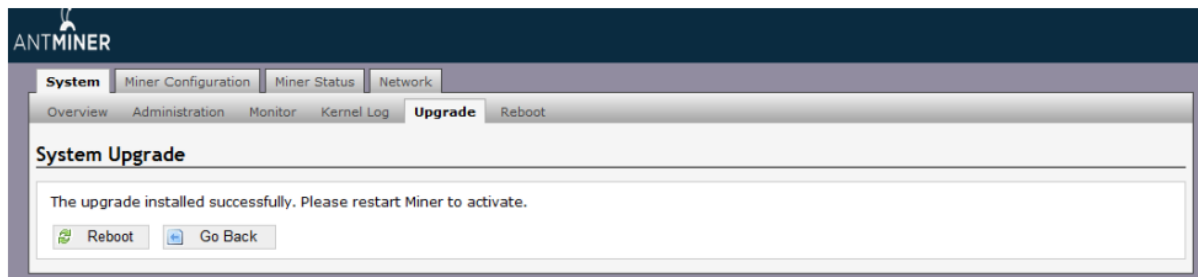
4.1.3 When "Customize the fan speed percentage" is checked, the fan speed can be controlled by the customer. If it's unchecked, the fan speed will depend on the temperature of the hash boards. Click 'Save & Apply' to save and restart the miner.



5.2 Frequency Modification

You are able to modify the frequency value through 'Miner Configuration->Advanced Settings'. The default frequency for the AntMiner S7 is 600M.

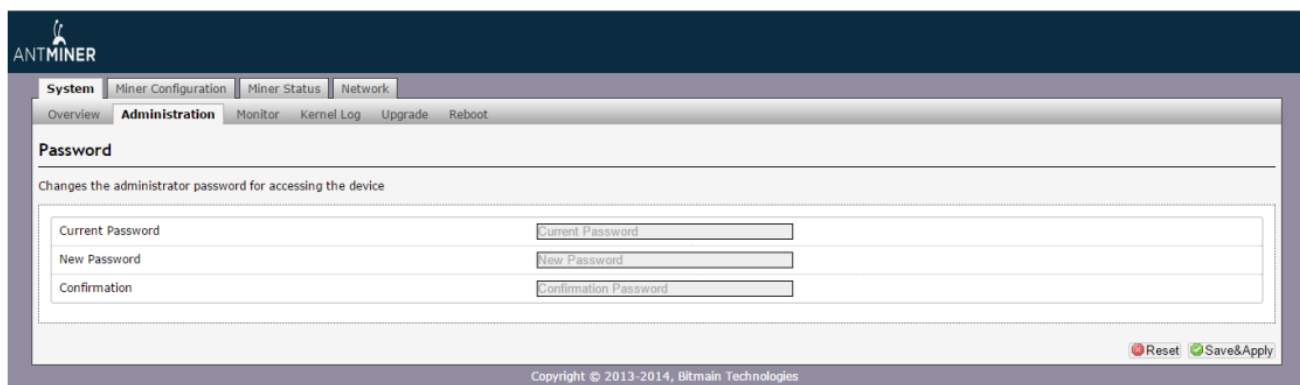
the power on, otherwise, the AntMiner can only be fixed with returned to the factory. You will see the below screenshot after upgrading successfully.



Clicking the 'Reboot' button will restart the miner so it can load the new software. Clicking 'Go Back' will keep the AntMiner mining, before switching to the new software when it is restarted next time or power cycled.

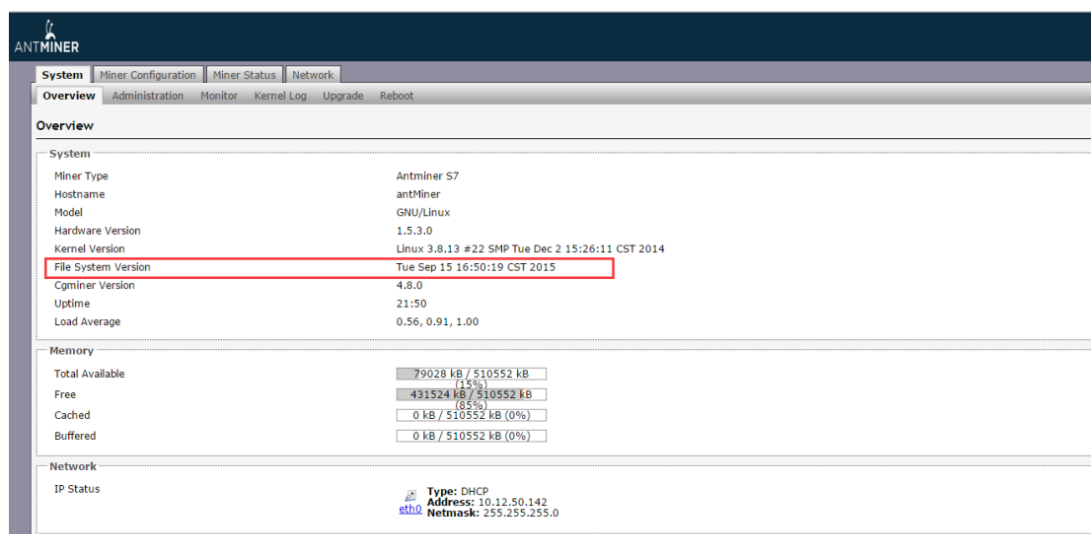
7.2 Password Modification

The AntMiner login password can be changed on the 'System->Administration' page. Once modified, press 'Save and Apply' to save the new password.



7.3 Software Version Checking

You can check which version of the software you are currently running on the 'System-> Overview' page. 'File System version' displays the date of the firmware your miner use. In the example below, the miner is using 20150915 firmware.



7.4 Restore Initial Setting

There is a 'Reset' button on the right-hand side of the Ethernet port, next to the green and red LED light. Power on the miner and let it run for 5 minutes, then press and hold the reset button for 10 seconds in order to restore to the default settings and reboot. The red LED will flash once every 15 seconds automatically if the reset is operated

successfully.



Documents / Resources

<div>BITMAIN</div> <div>AntMiner S7 Manual</div>	<div>BITMAIN AntMiner S7 4.73TH Bitcoin ASIC Miner [pdf] User Manual</div> <div>AntMiner S7, 4.73TH Bitcoin ASIC Miner</div>
--	--