



BITMAIN AntMiner S19 Hydro Server Installation Guide

[Home](#) » [BITMAIN](#) » **BITMAIN AntMiner S19 Hydro Server Installation Guide** 



**S19 Hydro Server
Installation Guide
Document Version 1.0
Feb. 2022**

© Copyright Bitmain Technologies Holding Company 2007 – 2022. All rights reserved. Bitmain Cayman (hereinafter referred to as 'Bitmain') reserves the right to make corrections, modifications, enhancements, improvements, and other changes to its products and services at any time and to discontinue any product or service without notice. Customers should obtain the latest relevant information before placing orders and should verify that such information is current and complete. All products are sold subject to Bitmain's terms and conditions of sale supplied at the time of order acknowledgment. Bitmain warrants the performance of its products to the specifications applicable at the time of sale in accordance with Bitmain's standard warranty. Testing and other quality control techniques are used to the extent Bitmain deems necessary to support this warranty. Except where mandated by government requirements, testing of all parameters of each product is not necessarily performed. Bitmain assumes no liability for third-party applications assistance. Customers are responsible for their products and applications using Bitmain components. To minimize the risks associated with customer products and applications, customers should provide adequate design and operating safeguards. Bitmain does not warrant or represent that any license, either express or implied, is granted under any Bitmain patent right, copyright or other Bitmain intellectual property right relating to any combination, machine, or process in which Bitmain products or services are used. Information published by Bitmain regarding third-party products or services does not constitute a license from Bitmain to use such products or services or a warranty or endorsement thereof. Use of such information may require a license from a third party under the patents or other intellectual property of the third party, or a license from Bitmain under the patents or other intellectual property of Bitmain. Resale of Bitmain products or services with statements different from or beyond the parameters stated by Bitmain for that product or service voids all express and any implied warranties for the associated Bitmain product or service and is an unfair

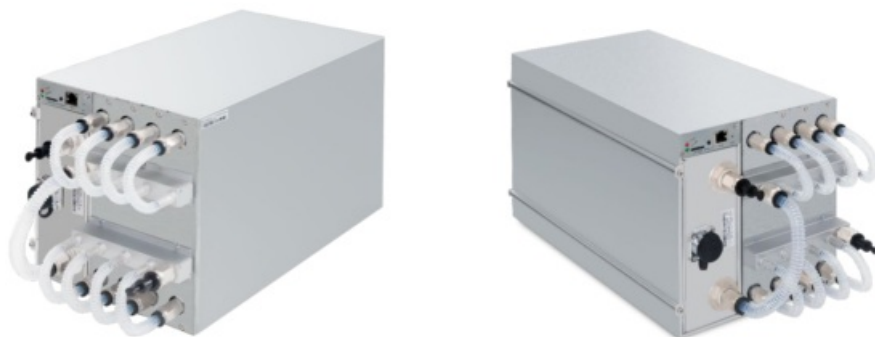
and deceptive business practice. Bitmain is not responsible or liable for any such statements. All company and brand products and service names are trademarks or registered trademarks of their respective holders. All text and figures included in this publication are the exclusive property of Bitmain, and may not be copied, reproduced, or used in any way without the express written permission of Bitmain. Information in this document is subject to change without notice and does not represent a commitment on the part of Bitmain. Although the information in this document has been carefully reviewed, Bitmain does not warrant it to be free of errors or omissions. Bitmain reserves the right to make corrections, updates, revisions or changes to the information in this document.

Contents

- [1 Overview](#)
- [2 Specifications](#)
- [3 Setting up the Server](#)
- [4 Configuring the Server](#)
- [5 Monitoring Your Server](#)
- [6 Administering Your Server](#)
- [7 Regulations:](#)
- [8 Documents / Resources](#)
 - [8.1 References](#)
- [9 Related Posts](#)

Overview

The S19 Hydro server is one of Bitmain's newest versions in the 19 hydro server series. Power supply APW11 is part of the S19 Hydro server. All S19 Hydro servers are tested and configured prior to shipping to ensure easy setup.



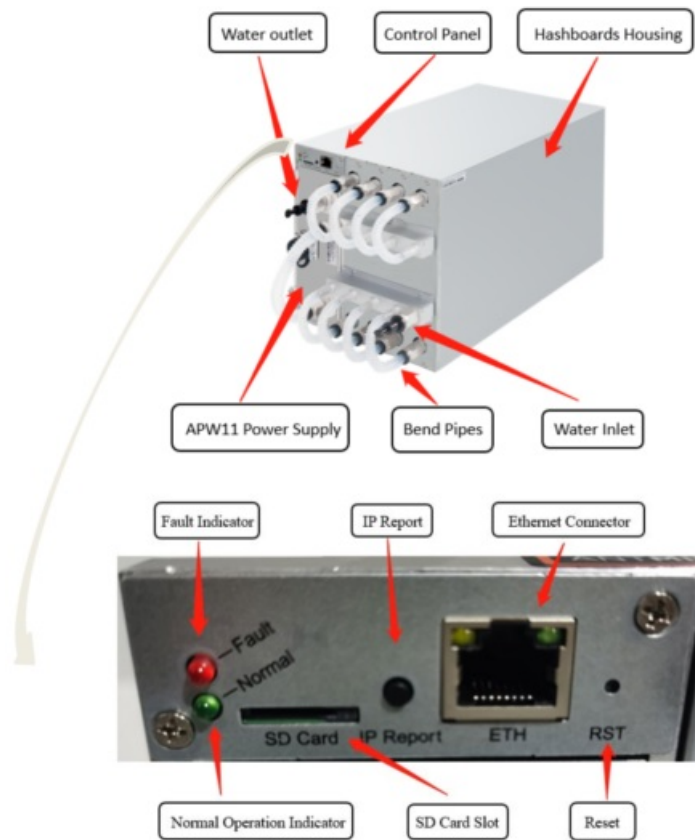
Caution:

1. Please refer to the layout above to place your goods in usage in case of any damage.
2. DO NOT remove any screws and cables tied to the product.
3. Please note that the actual server shall prevail.
4. There must be an external specific Surge Protection device complying with IEC/EN 61643-11 either in front of the power supply or outside the end system (in a separate distribution box or as part of the building installation).
5. Do not plug or remove the device when it is powered on.
6. The external of the power supply shall have a disconnecting device, which can disconnect L1&L2&L3 simultaneously.
7. The S19 Hydro server shall be used simultaneously with the ARTSPACE HK3. Please click [here](#) for more

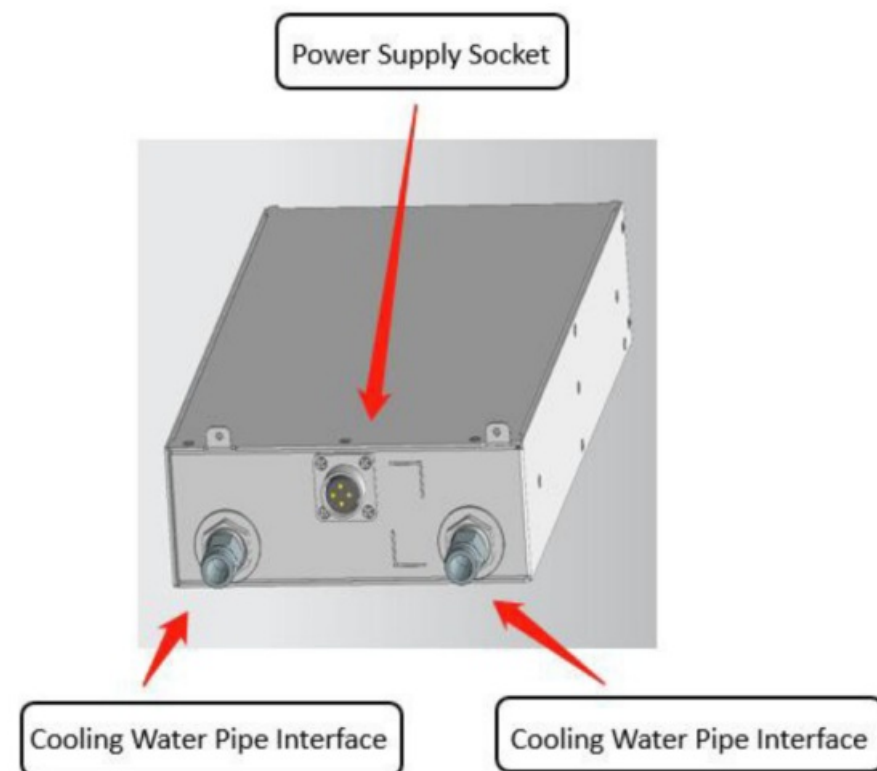
details of ANTSPACEHK3.

1.1 S19 Hydro Server Components

The main components and control panel of S19 Hydro servers are shown in the following figure:



APW11 Power Supply:



**Note:**

Power supply APW11 is part of S19 Hydro server. For detailed parameters, please refer to the specifications below.

Specifications

Product Glance	Value			
Version	S19 Hydro			
Model	208-A			
Crypto Algorithm/Coins	SHA256/BTC/BCH			
Hashrate, TH/s	132 ± 3%	138.5 ± 3%	145 ± 3%	151.5 ± 3%
Power on wall@Tj65°C, Watt (1-1)	4554 ± 5%	4778 ± 5%	5003 ± 5%	5227 ± 5%
Power efficiency on wall @Tj65°C, J/TH (1-1)	34.5 ± 5%	34.5 ± 5%	34.5 ± 5%	34.5 ± 5%

Detailed Characteristics	Value
Power Supply	
Power supply AC input voltage, Volt (2-1)	342-418
Power supply AC Input Frequency Range, Hz	47-63
Power supply AC Input current, Amp(2-2)	30
Hardware Configuration	
Network connection mode	RJ45 Ethernet 10/100M
Server Size (Length*Width*Height, w/o package), mm 410*196*209	
Server Size (Length*Width*Height, with package), mm	570*316*430
Net weight, kg	15.2
Gross weight, kg	18.5
Environment Requirements	
Operation temperature, °C (2-3)	0-40
Inlet water temperature, °C	20-40
Water flow L/min	8±10%
Water pressure bar	≤3.5
Storage temperature, °C	-20-70
Operation humidity(non-condensing), RH	10-90%

Notes:

- (1-1) Inlet water temperature
- (2-1) Caution: Wrong input voltage may probably cause server damaged
- (2-2) Three-phase AC input, 10A per wire
- (2-3) Operation altitude is recommended below 2000m

Setting up the Server

To set up the server:



The file IPReporter.zip is supported by Microsoft Windows only.

1. Go to the following site:

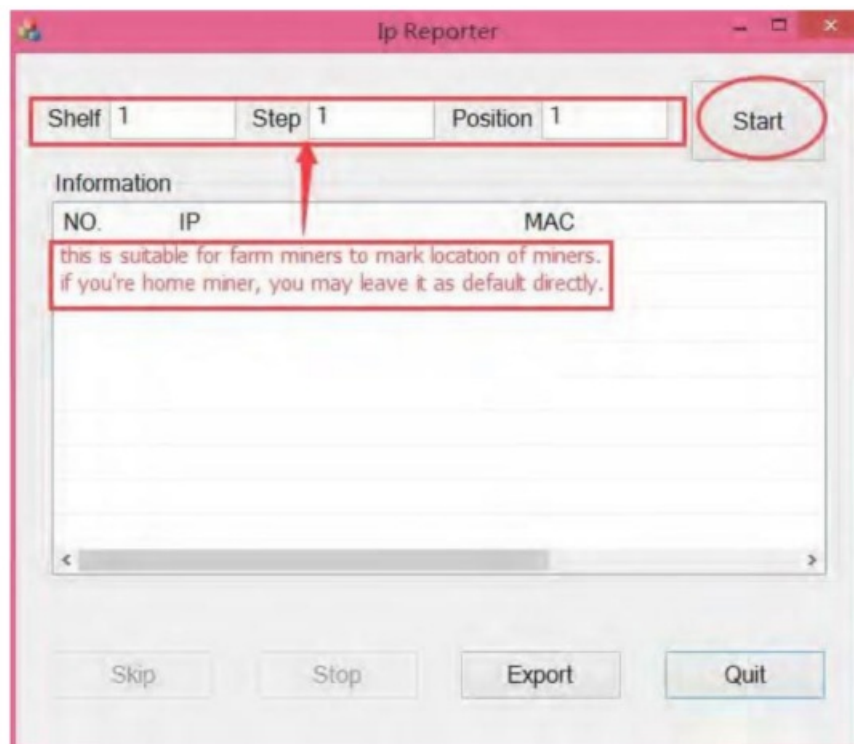
<https://shop.bitmain.com/support.htm?pid=00720160906053730999PVD2K0vz0693>

2. Download the following file: IPReporter.zip.
3. Extract the file.

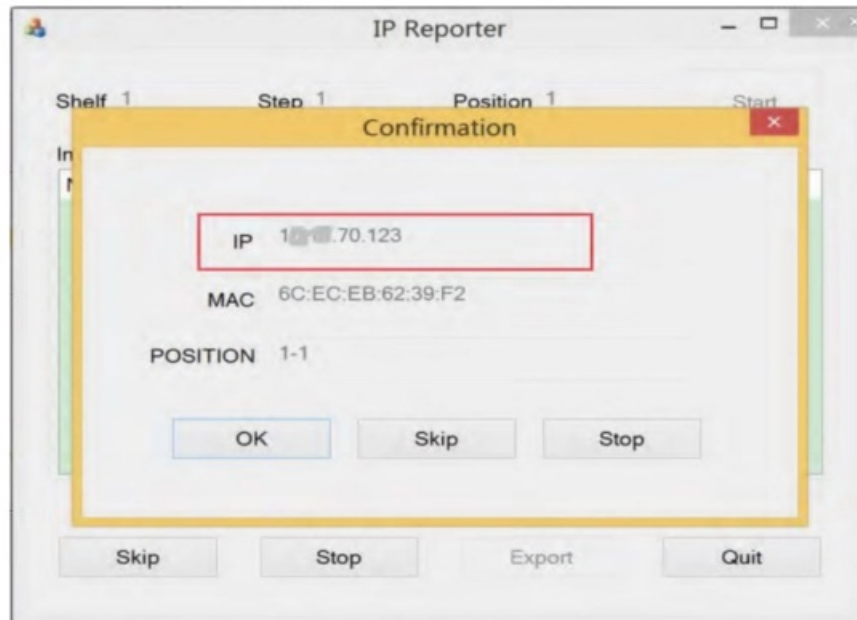


The default DHCP network protocol distributes IP addresses automatically.

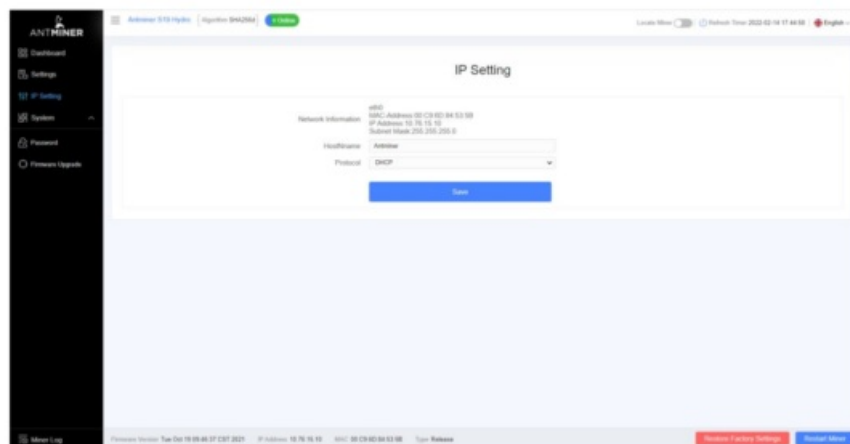
4. Right-click IPReporter.exe and run it as Administrator.
5. Select one of the following options:
 - Shelf, Step, Position – suitable for farm servers to mark the location of the servers.
 - Default – suitable for home servers.
6. Click Start.



7. On the control panel, click the IP Report button. Hold it down until it beeps (about 5 seconds). The IP address will be displayed in a window on your computer screen.



8. In your web browser, enter the IP address provided.
9. Proceed to login using root for both the username and password.
10. In the Protocol section, you can assign a Static IP address (optional).
11. Enter the IP address, Subnet mask, gateway and DNS Server.
12. Click “Save”.
13. Click <https://support.bitmain.com/hc/en-us/articles/360018950053> to learn more about gateway and DNS Server.




Configuring the Server

Setting up the Pool

To configure the server:

1. Click Settings as below.

2. Set the options according to the following table.

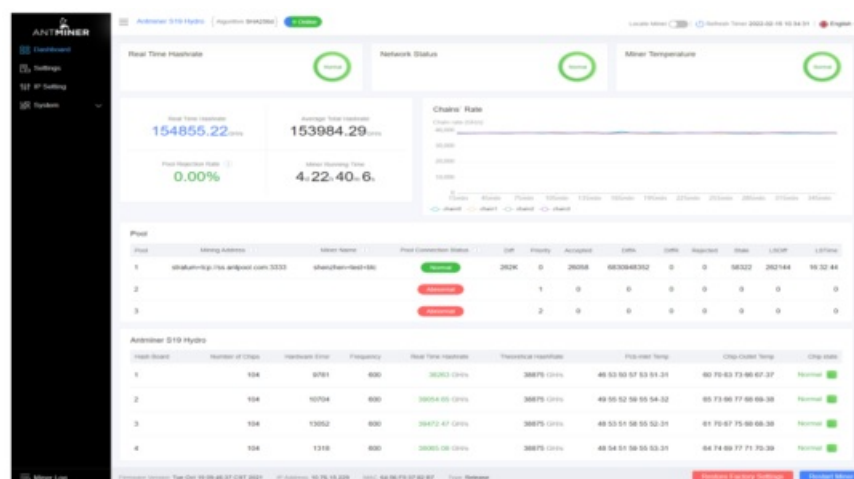
Option	Description
Mining addresses	<p>Enter the address of your desired pool.</p> <p> The S19 Hydro servers can be set up with three mining pools, with decreasing priority from the first pool (pool 1) to the third pool (pool 3). The pools with low priority will only be used if all higher priority pools are offline.</p>
Name	Your worker ID on the selected pool.
Password (optional)	The password for your selected worker.

3. Click Save after the configuration.

Monitoring Your Server

To check the operating status of your server (taking S19 hydro 151.5T as an example):

1. Click the dashboard marked below to check the server status.



Note: The frequency of the S19 Hydro server is fixed with the value of 600 MHz. The firmware will stop running when the Temp (PCB) reaches to 80 °C or the water temperature is either greater than 65 °C or lower

than 20 °C there will be an error message “Fatal Error: Temperature is too high!” shown on the Bottom of the Kernel log page.

2. Monitor your server according to the descriptions in the following table:

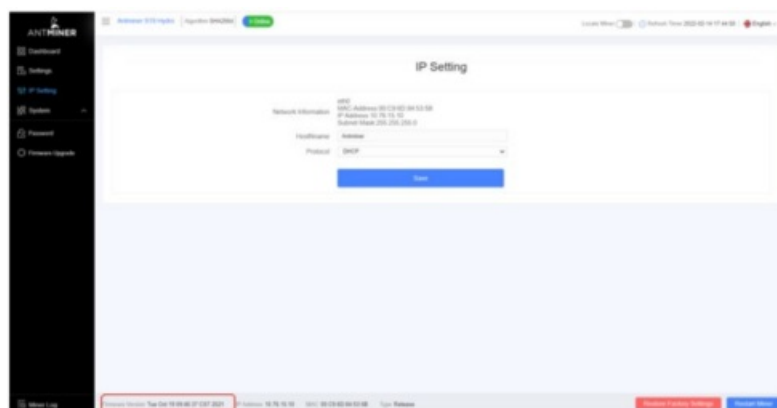
Option	Description
Number of chips	A number of chips were detected in the chain.
Frequency	ASIC frequency setting.
Real Hashrate	Real-time Hashrate of each hash board (GH/s).
Inlet Temp	The temperature of the inlet (°C).
Outlet Temp	The temperature of the outlet (°C).
Chip state	One of the following statuses will appear: <ul style="list-style-type: none">● The Green Icon – indicates normal● The Red Icon- indicates abnormal

Administering Your Server

5.1 Checking Your Firmware Version

To check your firmware version:

1. Enter the backstage of your server, and find the firmware version on the bottom.
2. File System Version displays the date of the firmware your server use. In the example below, the server is using firmware version 20211019.



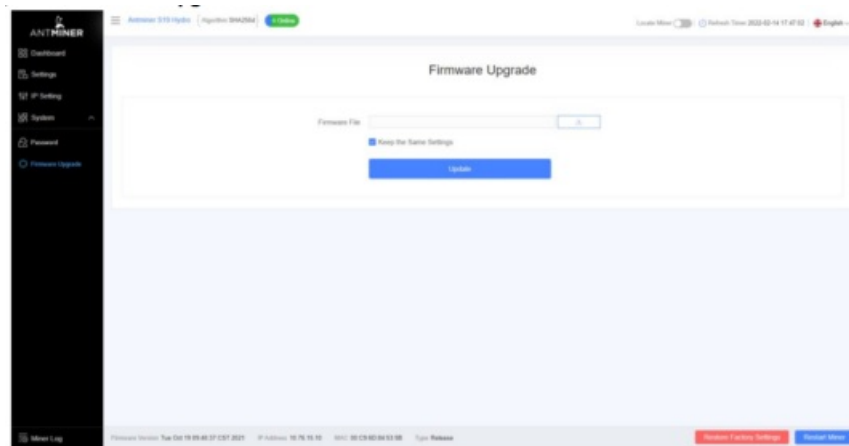
5.2 Upgrading Your System



Make sure that the S19 Hydro server remains powered during the upgrade process. If power fails before the upgrade is completed, you will need to return it to Bitmain for repair.

To upgrade the server's firmware:

1. In System, click Firmware Upgrade.



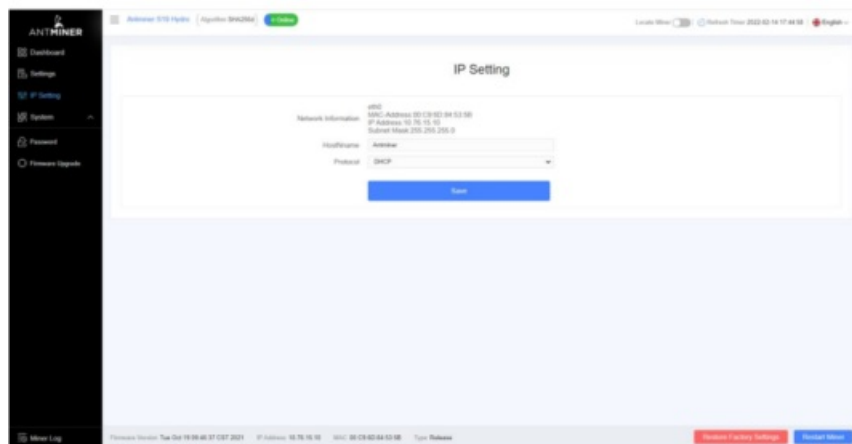
2. For Keep Settings:

■ Select “keep settings” to keep your current settings (default).

■ Unselect “keep settings” to reset the server to default settings.

3. Click the  button and navigate to the upgrade file. Select the upgrade file, then click Update.

4. When the upgrade is completed, restart the server and it will turn to the setting page.



5. Click one of the following options:

■ Reboot – to restart the server with the new firmware.

■ Go Back – to continue mining with the current firmware. The server will load the new firmware the next time it is restarted.

5.3 Modifying Your Password

To change your login password:

1. In System, click the Password tab.

2. Set your new password, then click Save.



5.4 Restoring Initial Settings

To restore your initial settings

1. Turn on the server and let it run for 5 minutes.

2. On the control panel, press and hold the Reset button for 10 second



Resetting your server will reboot it and restore its default settings. The red LED will automatically flash once every 15 seconds if the reset is operated successfully.

Environmental Requirements

Please run your server in accordance with the following requirements

1. Basic Environmental Requirements:

1.1. Climatic Conditions:

Description	Requirement
Operating Temperature	-20-50 °C
Operating Humidity	20-90%RH (non-condensing)
Storage Temperature	-20-70 °C
Storage Humidity	5-95%RH non-condensing
Altitude	<2000m

1.2. Site Requirements of the Server Running Room:

Please keep the server running room away from industrial pollution sources:

For heavy pollution sources such as smelters and coal mines, the distance should be more than 5km. For moderate pollution sources such as chemical industries, and rubber and electroplating industries, the distance should be more than 3.7km.

For light pollution sources such as food factories and leather processing factories, the distance should be more than 2km. If unavoidable, the site should be chosen in the perennial upwind direction of the pollution source. Please do not set your location within 3.7km from the seaside or the salt lake. If unavoidable, it should be built as airtight as possible, equipped with air conditioning for cooling.

1.3. Electromagnetic Environmental Conditions:

Please keep your site away from transformers, high-voltage cables, transmission lines, and high-current equipment, for example, there should be no high-power AC transformers (>10KA) within 20 meters, and no high-voltage power lines within 50 meters. Please keep your site away from high-power radio transmitters, for example, there should be no high-power radio transmitters (>1500W) within 100 meters.

2. Other Environmental Requirements

The server running room shall be free of explosive, conductive, magnetically conductive, and corrosive dust. The requirements of mechanical active substances are shown below:

2.1 Requirements of Mechanical Active Substances

Mechanical Active Substance	Requirement
Sand	$\leq 30\text{mg/m}^3$
Dust (suspended)	$\leq 0.2\text{mg/m}^3$
Dust (deposited)	$\leq 1.5\text{mg/m}^2\text{h}$

2.2 Requirements of Corrosive Gas

Corrosive Gas	Unit	Concentration
H ₂ S	ppb	< 3
SO ₂	ppb	< 10
Cl ₂	ppb	< 1
NO ₂	ppb	< 50
HF	ppb	< 1
NH ₃	ppb	< 500
O ₃	ppb	< 2
Note: ppb (part per billion) refers to the unit of concentration 1ppb stands for the volume ratio of part per billion.		

Regulations:

FCC Notice (FOR FCC CERTIFIED MODELS):

This device complies with part 15 of the FCC Rules. Operation is subject to the following two conditions: (1) This device may not cause harmful interference, and (2) this device must accept any interference received, including interference that may cause undesired operation.

Note:


This equipment has been tested and found to comply with the limits for a Class A digital device, pursuant to part 15 of the FCC Rules. These limits are designed to provide reasonable protection against harmful interference when the equipment is operated in a commercial environment. This equipment generates, uses, and can radiate radio frequency energy and, if not installed and used in accordance with the instruction manual, may cause harmful interference to radio communications. Operation of this equipment in a residential area is likely to cause harmful interference in which case the user will be required to correct the interference at his own expense.

EU WEEE: Disposal of Waste Equipment by Users in Private Households in the European Union

This symbol on the product or on its packaging indicates that this product must not be disposed of with your other household waste. Instead, it is your responsibility to dispose of your waste equipment by handing it over to a designated collection point for the recycling of waste electrical and electronic equipment. The separate collection and recycling of your waste equipment at the time of disposal will help to conserve natural resources and ensure that it is recycled in a manner that protects human health and the environment. For more information about where you can drop off your waste equipment for recycling, please contact your local city office, your household waste disposal service or the shop where you purchased the product.

Bitmain
Tel: +86-400-890-8855
www.bitmain.com

Documents / Resources

	<p>BITMAIN AntMiner S19 Hydro Server [pdf] Installation Guide AntMiner S19, Hydro Server, AntMiner S19 Hydro Server</p>
----------------------------------------------------------------------------------	---------------------------------------------------------------------------------------------------------------------------------------------

References

-  [BITMAIN](#)
-  [BITMAIN](#)

[Manuals+.](#)