



BITDOORCCD100 Lutopix Smart Camera User Guide

[Home](#) » [BITDOOR](#) » BITDOORCCD100 Lutopix Smart Camera User Guide 

Contents

- [1 BITDOORCCD100 Lutopix Smart Camera](#)
- [2 Product Usage Instructions](#)
- [3 In the box](#)
- [4 Parameter](#)
- [5 USINF INSTRUCTION](#)
- [6 FCC](#)
- [7 Frequently Asked Questions](#)
- [8 Documents / Resources](#)
 - [8.1 References](#)
- [9 Related Posts](#)



BITDOORCCD100 Lutopix Smart Camera



Product Specifications

- **Product Name:** Lutopix Smart Camera – AM108
- **Model Number:** AM108
- **Manufacturer:** Shenzhen Bitdoor Technology Co., Ltd.
- **Address:** Room 613A, XiWan building, No.15th Jin Hai Road, Xixiang Street, Baoan District, Shenzhen City, China
- **RF Specifications:**
 - **WIFI Frequencies:** 2.4G, 5.2G, 5.3G, 5.6G, 5.8G
 - **Operation Frequency:** 2412-2472MHz; 5180-5240MHz; 5260-5320MHz; 5500-5700MHz; 5745-5825MHz
 - **Max RF Output Power:** 17.32 dBm, 12.49 dBm, 11.23 dBm, 12.45 dBm, 12.99 dBm
 - **EU Declaration of Conformity:** Yes

Product Usage Instructions

Downloading the APP and Initial Setup:

1. Scan the QR code provided in the manual to download the APP on your smartphone.
2. Register and login to the APP.

Connecting the Camera:

3. Click on 'Add Device' in the APP and select 'Camera'.
4. Reset the camera by inserting a needle into the reset hole until you hear a sound.
5. Scan the QR code on the camera using your smartphone.
6. Select your Wi-Fi network, enter the password, and press 'NEXT'.
7. Use the camera to scan the QR code displayed on your phone to configure the network automatically.

Installation:

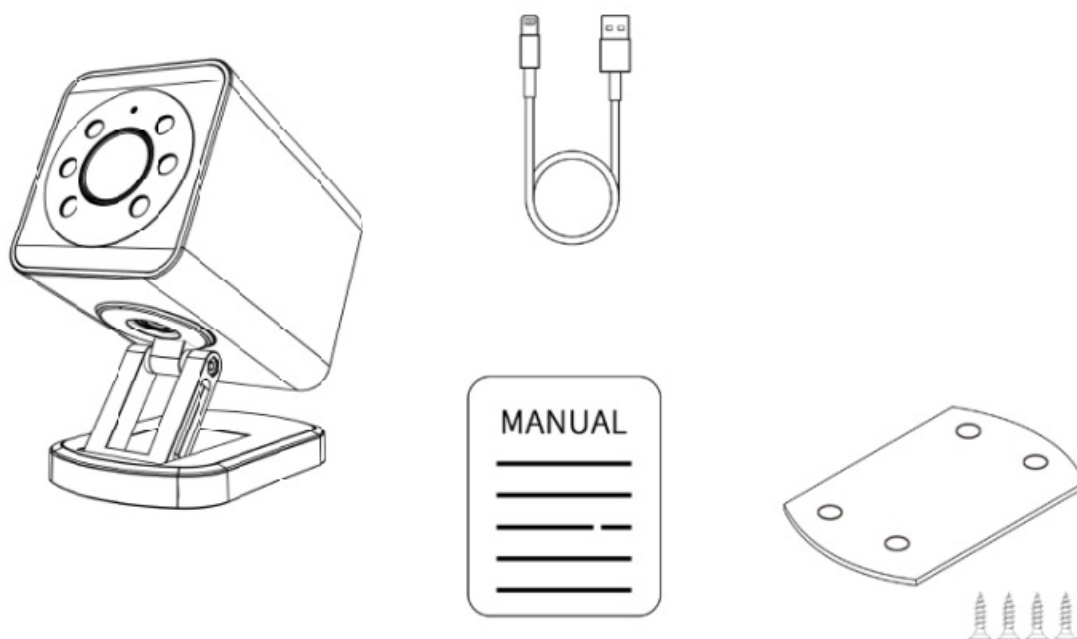
8. Bind the camera to the door opener.
9. Install the bottom base steel plate provided in the box.
10. Set up the camera according to your preferences.

EU Declaration of Conformity

The wireless camera complies with the essential requirements of Directive 2014/53/EU and is restricted for indoor use within the 5.15-5.35GHz RLAN band.

Please scan the above QR code for other languages

In the box



Camera	x1
Power connection cable (USB + TYPE C)	x1
Bottom base steel plate	x1
Screw bag	x1
User manual	x1

Parameter

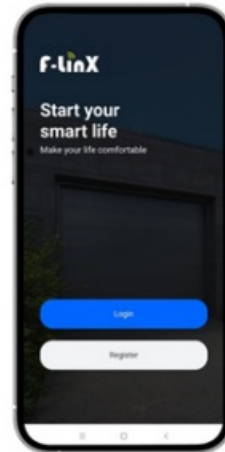
- **Product name:** Smart Camera
- **Product model:** AM108
- **Maximum resolution:** 2304*1296
- **Lens specifications:** HD lens 2.8mm@F2.0
- **Viewing range:** horizontal 120°, vertical 105°
- **Day / Night:** support IR-CUT automatic switching
- **NETCOM:** WIFI 802.11 b/g/n/a 2.4G+5G
- **Storage:** Cloud storage / T card storage compatible

- **Power supply:** 5V DC – 24V DC(±10%)
- **Speaker:** 2W digital speaker
- **Microphone:** 2 * MIC digital noise reduction
- **Temperature range:** -10°C – 50°C
- **Class of protection:** IP66
- **Net weight:** 450g

USINF INSTRUCTION



+



1. Scan the QR code below by your smartphone to download the APP, register, and log in.
2. To connect to the APP, follow steps 1 – 6, to install & wire, follow steps 7-9.

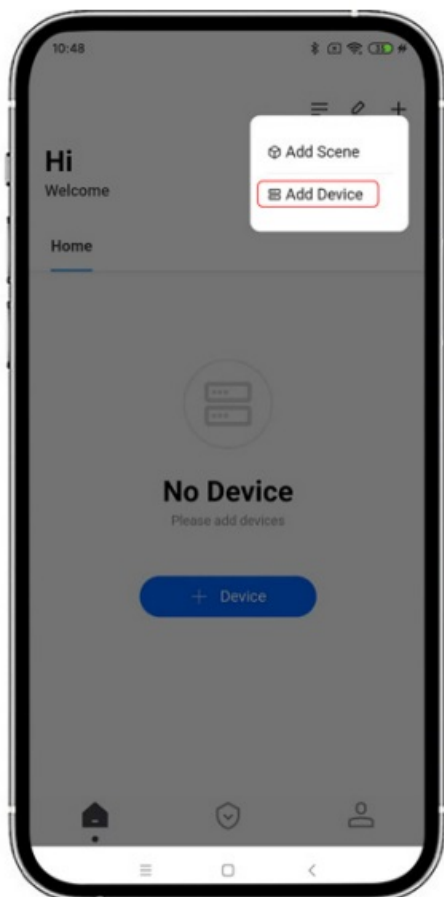


IOS



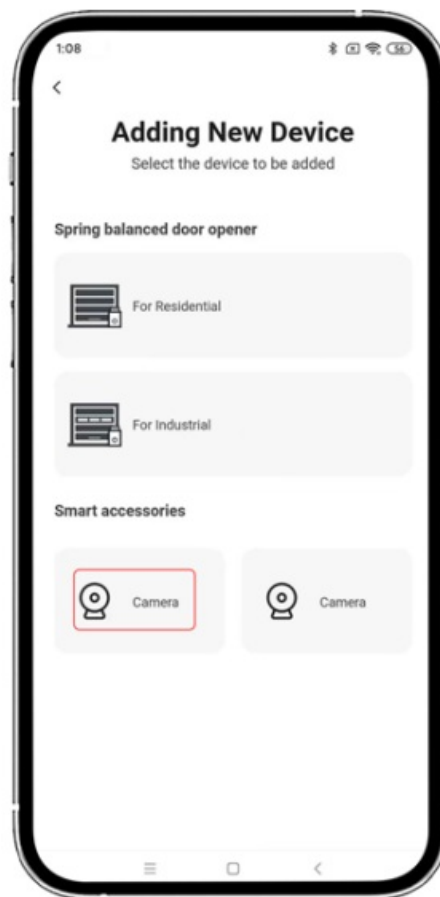
GOOGLE PLAY

1



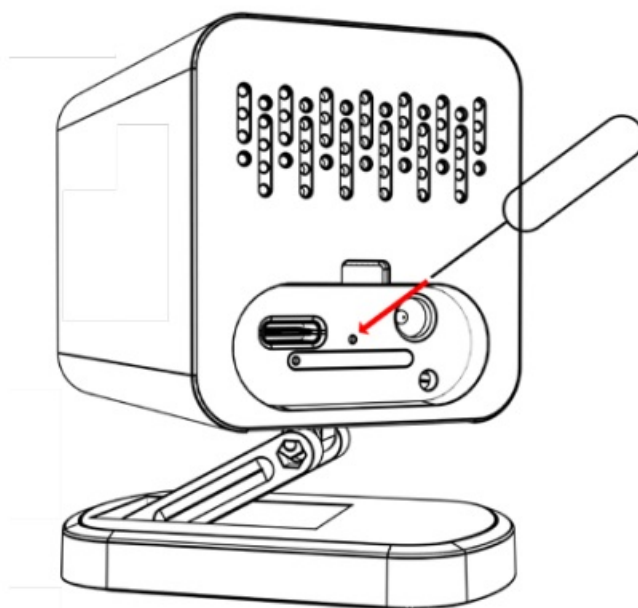
Click add device

2



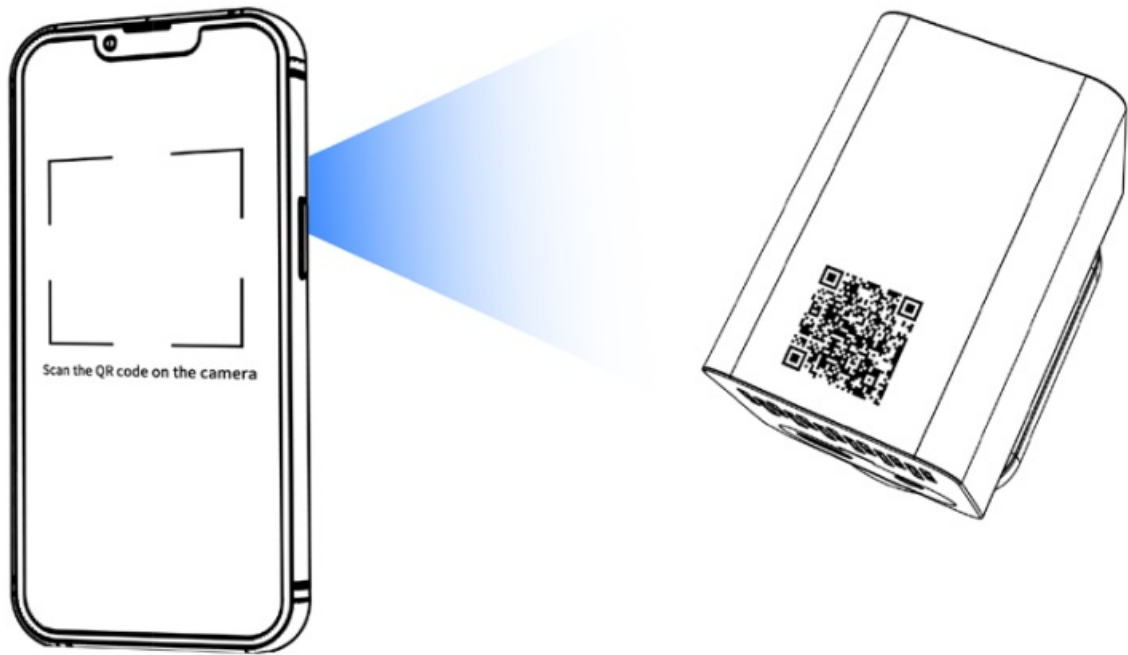
Click camera

3



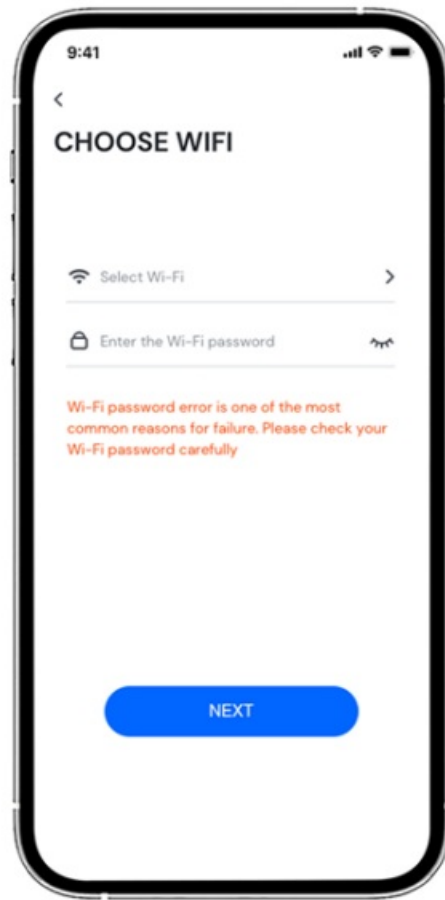
Reset the device

4



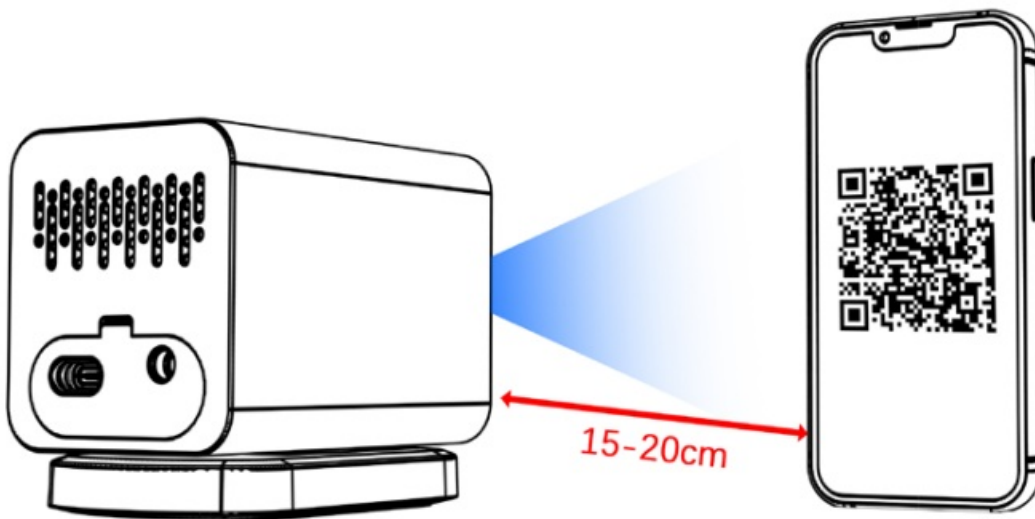
Scan the QR code on the camera

5

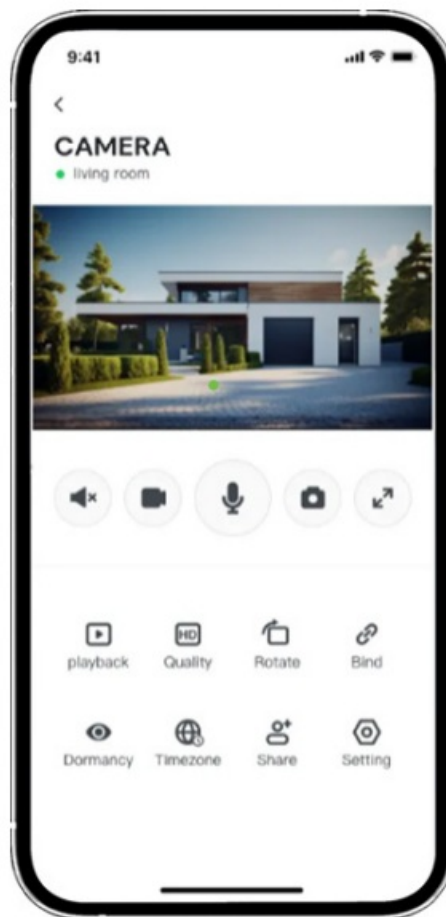


Select the Wi-Fi & enter password then press 'NEXT', there will be a QR code shown on your cell phone.

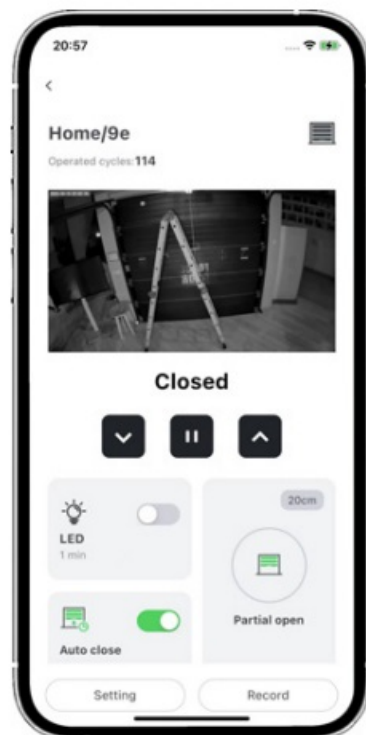
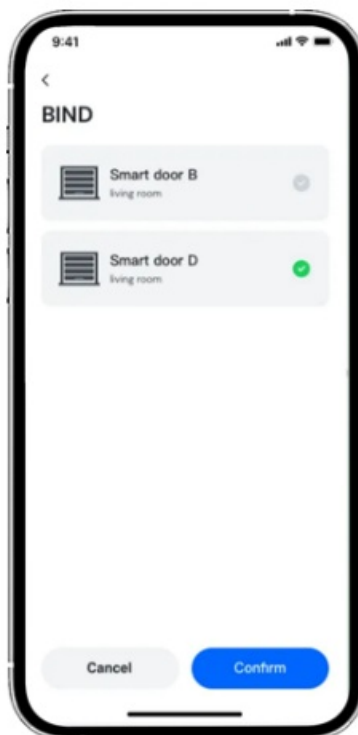
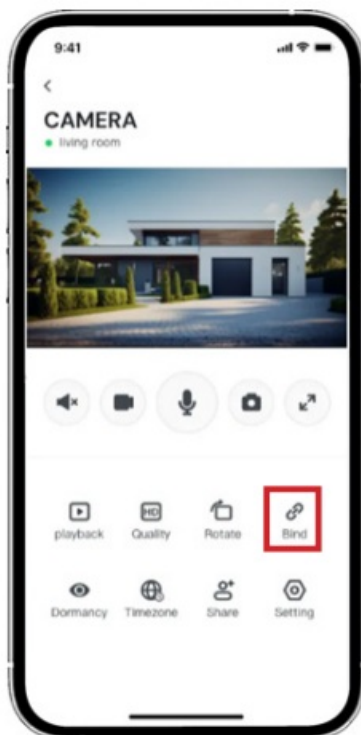
6



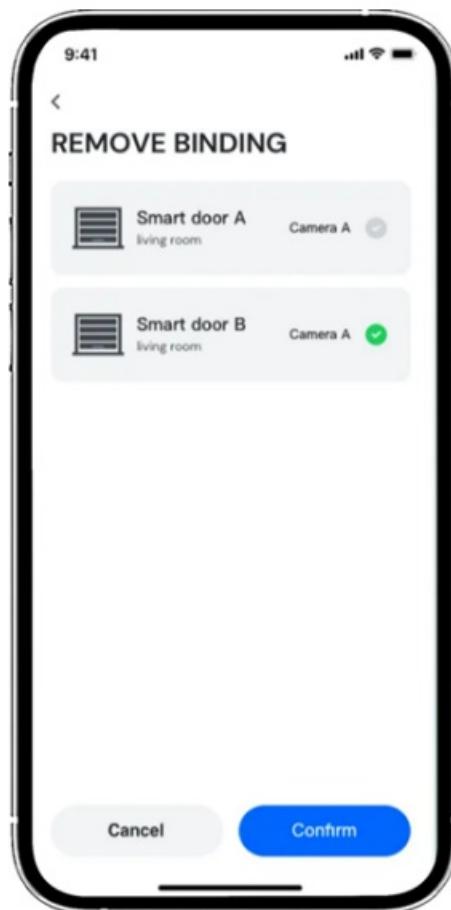
Use the camera to scan the QR code that appears on your phone. The scan is successful when you hear 'di'. The camera will configure network automatically, this process will take about 20 seconds.



Successful

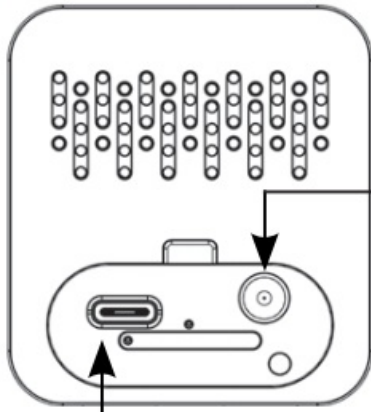


Bind the camera to door opener



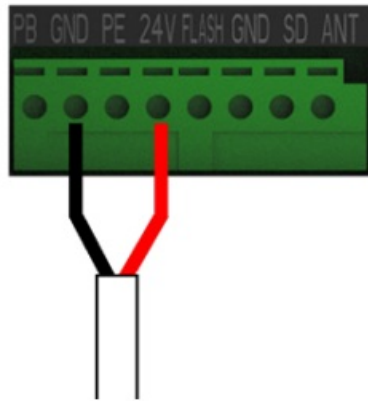
Remove binding

7



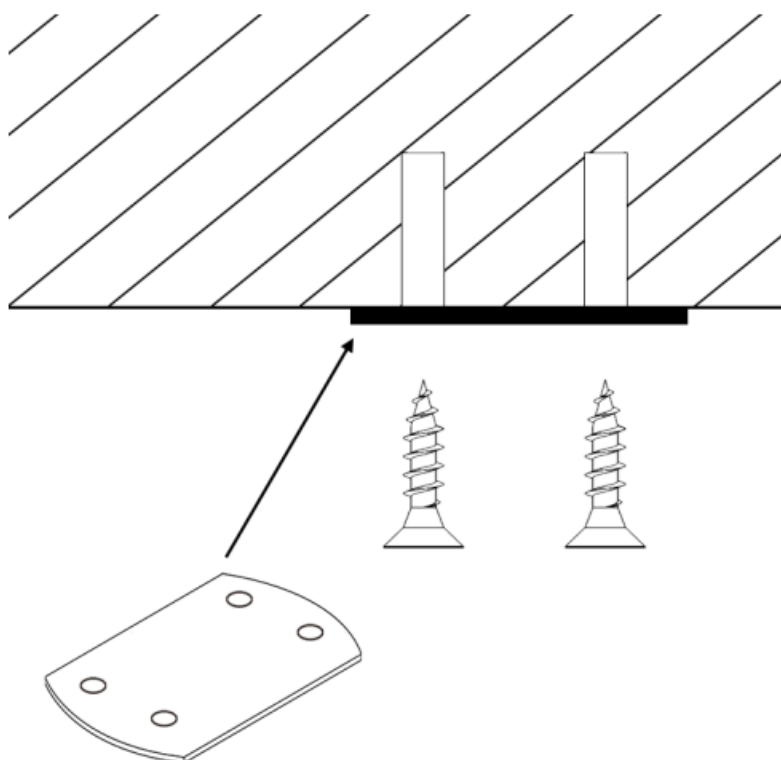
Power adapter port

Type C port

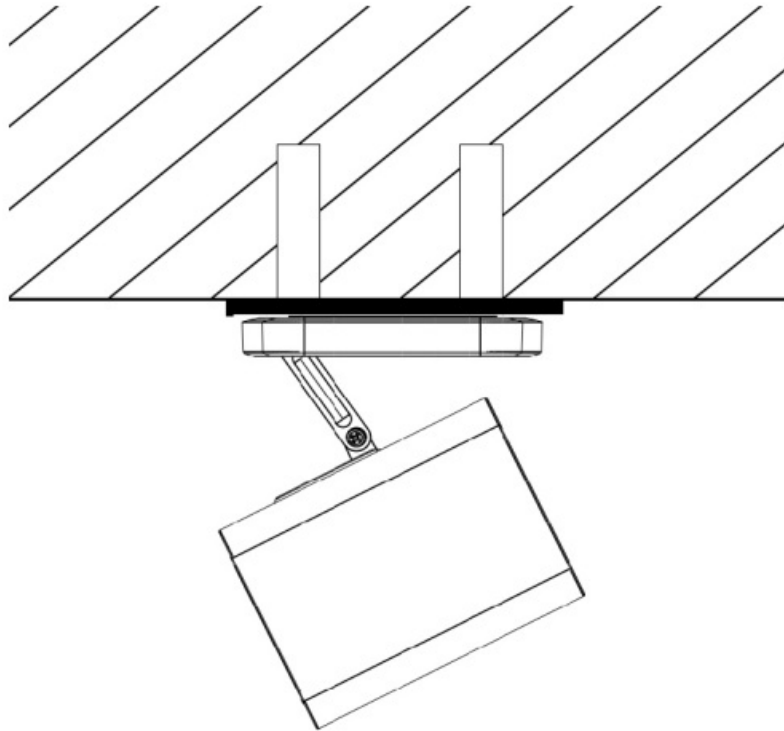


Power connection from
camera to opener

8



Install the steel plate



Set the camera

FCC

FCC WARNING

This device complies with part 15 of the FCC Rules. Operation is subject to the following two conditions:

1. this device may not cause harmful interference,
2. this device must accept any interference received, including interference that may cause undesired operation.

Any changes or modifications not expressly approved by the party responsible for compliance could void the user's authority to operate the equipment.

NOTE: This equipment has been tested and found to comply with the limits for a Class B digital device, under Part 15 of the FCC Rules. These limits are designed to provide reasonable protection against harmful interference in a residential installation. This equipment generates, uses, and can radiate radio frequency energy and, if not installed and used by the instructions, may cause harmful interference to radio communications. However, there is no guarantee that interference will not occur in a particular installation.

If this equipment does cause harmful interference to radio or television reception, which can be determined by turning the equipment off and on, the user is encouraged to try to correct the interference by one or more of the following measures:

- Reorient or relocate the receiving antenna.
- Increase the separation between the equipment and the receiver.
- Connect the equipment to an outlet on a circuit different from that to which the receiver is connected.

- Consult the dealer or an experienced radio/TV technician for help.

To maintain compliance with FCC's RF Exposure guidelines.

This equipment should be installed and operated with a minimum distance between 20cm of the radiator and your body: Use only the supplied antenna.

- **Manufacturer's Name:** Shenzhen Bitdoor Technology Co., Ltd.
- **Address:** Room 613A, XiWan building, No.15th Jin Hai Road, Xixiang Street, Baoan District, Shenzhen City, China
- **Applicant's Name:** Shenzhen Bitdoor Technology Co., Ltd.
- **Address:** Room 613A, XiWan building, No.15th Jin Hai Road, Xixiang Street, Baoan District, Shenzhen City, China
- **Product Name:** Smart Camera
- **Trade Mark:** N/A
- **Model number:** AM108

This device complies with the essential requirements and other relevant provisions of Directive 2014/53/EU. All essential radio test suites have been carried out. The device complies with RF specifications when the device used at 20cm from your body. The product shall only be connected to a USB interface of version USB2.0

RF Specification:

Function	Operation Frequency	Max RF outputpower:	Limit
WIFI 2.4G	2412-2472MHz;	17.32 dBm	20 dBm.
WIFI 5.2G	5180-5240MHz;	12.49 dBm	23 dBm.
WIFI 5.3G	5260-5320MHz;	11.23 dBm	23 dBm.
WIFI 5.6G	5500-5700MHz;	12.45 dBm	23 dBm.
WIFI 5.8G	5745-5825MHz;	12.99 dBm	13.98 dBm.

EU Declaration of Conformity

We, Shenzhen bitdoor Technology Co., Ltd. (Room 613A, XiWan building, No.15th Jin Hai Road, XiXiang Street, BaoAn District, Shenzhen City, China) hereby declare that this Wireless camera complies with the essential requirements and other relevant provisions of Directive 2014/53/EU.

The use of the 5.15-5.35GHz RLAN band is restricted to indoor use. This restriction will be applied to all Member States of the European Union.

	BE	BG	CZ	DK	DE	EE	IE	EL
	ES	FR	HR	IT	CY	LV	LT	LU
	HU	MT	NL	AT	PL	PT	RO	SI
	SK	FI	SE	NO	IS	LI	CH	TR

Frequently Asked Questions


- **Q: How can I reset the camera?**
 - A: To reset the camera, insert a needle into the reset hole until you hear a sound indicating the reset

process has started.

- **Q: What should I do if I encounter issues during the installation process?**

- A: If you face any difficulties during installation, please refer to the user manual or contact customer support for assistance.

Documents / Resources

 <p>Lutopix Smart Camera - AM108</p> <p>Please scan the above QR code for other languages</p>	<p>BITDOOR BITDOORCCD100 Lutopix Smart Camera [pdf] User Guide</p> <p>BITDOORCCD100, 2BEXHBITDOORCCD100, BITDOORCCD100 Lutopix Smart Camera, BITDOORCCD100, Lutopix Smart Camera, Smart Camera, Camera</p>
--	--

References

- [User Manual](#)

Manuals+, Privacy Policy

This website is an independent publication and is neither affiliated with nor endorsed by any of the trademark owners. The "Bluetooth®" word mark and logos are registered trademarks owned by Bluetooth SIG, Inc. The "Wi-Fi®" word mark and logos are registered trademarks owned by the Wi-Fi Alliance. Any use of these marks on this website does not imply any affiliation with or endorsement.