



BISSELL 2026M Dry Drum Vacuum Instruction Manual

[Home](#) » [Bissell](#) » [BISSELL 2026M Dry Drum Vacuum Instruction Manual](#) 

Contents

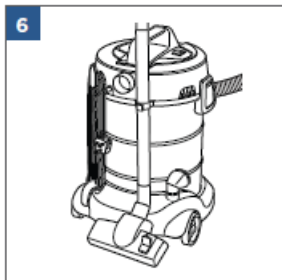
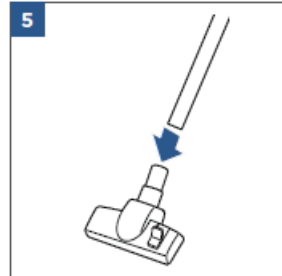
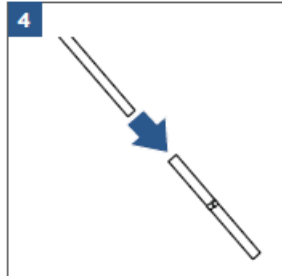
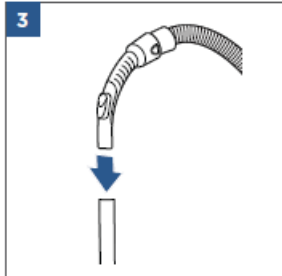
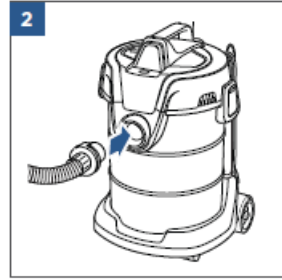
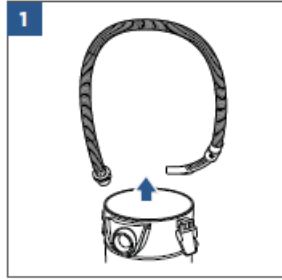
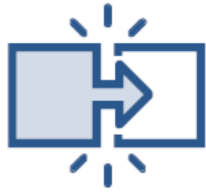
- [1 BISSELL 2026M Dry Drum Vacuum](#)
- [2 InstructionsHow to ON/OFF How To Use](#)
- [3 Documents / Resources](#)
 - [3.1 References](#)
- [4 Related Posts](#)

BISSELL®

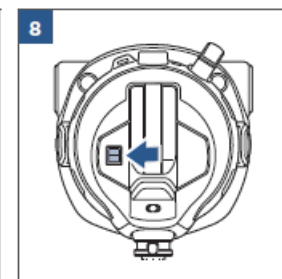
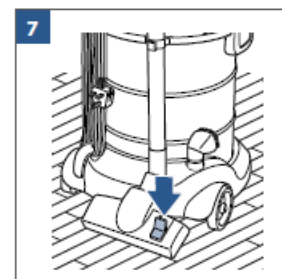
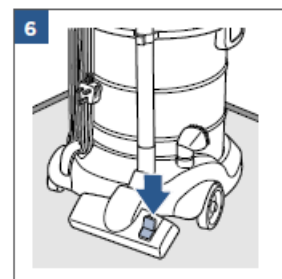
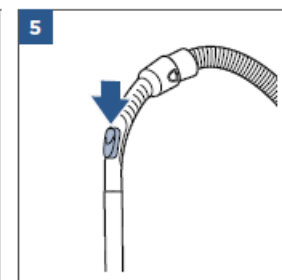
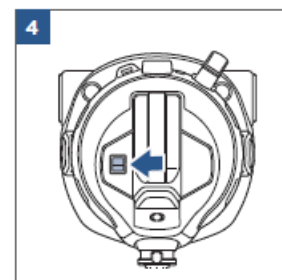
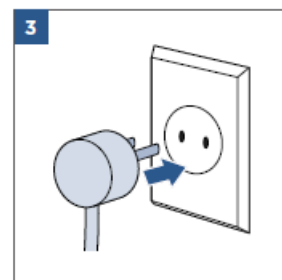
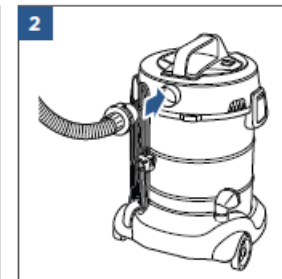
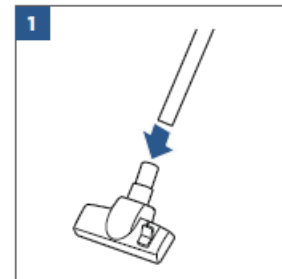
BISSELL 2026M Dry Drum Vacuum

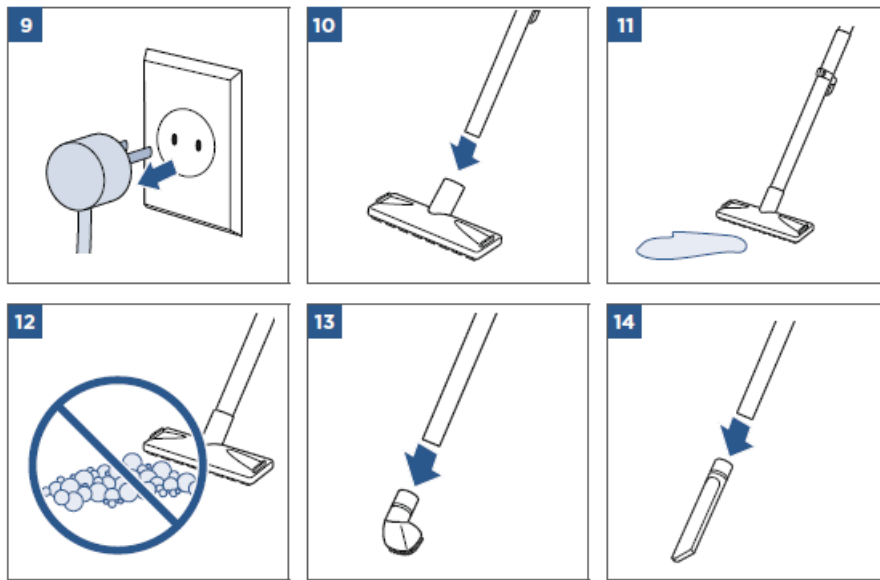


Instructions

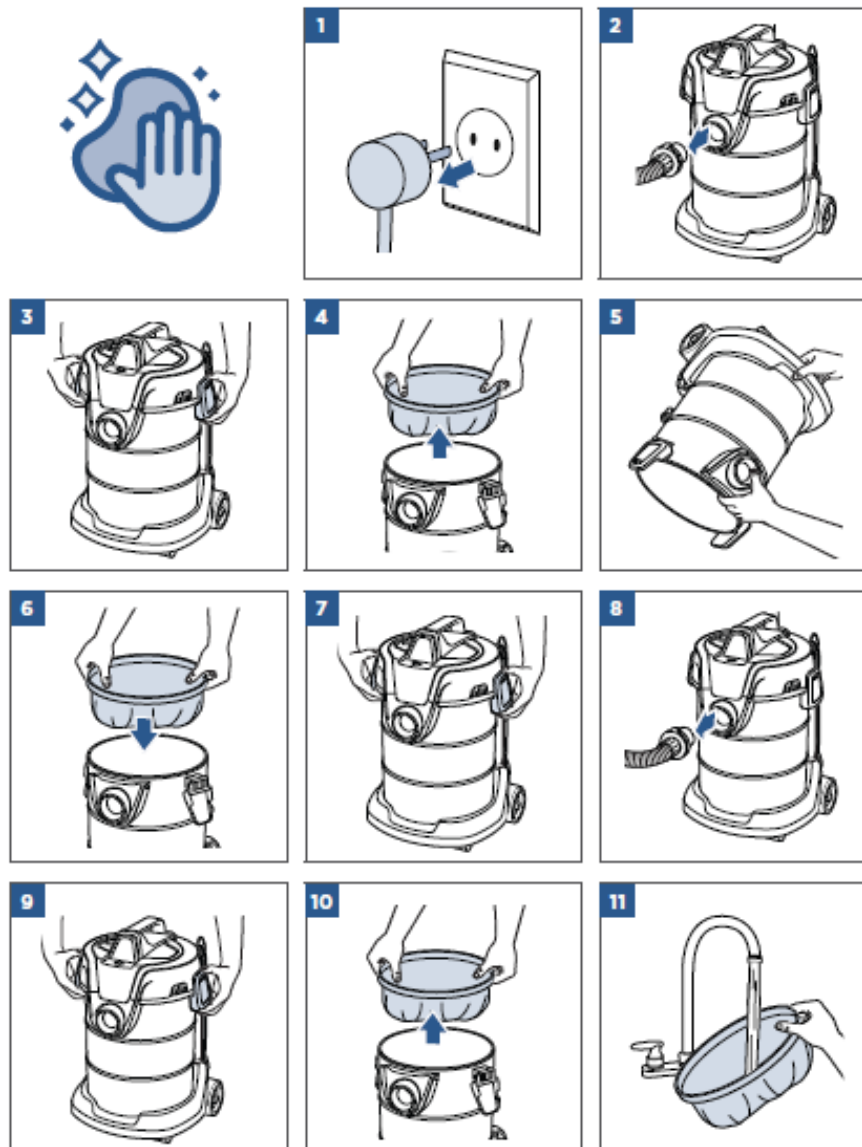


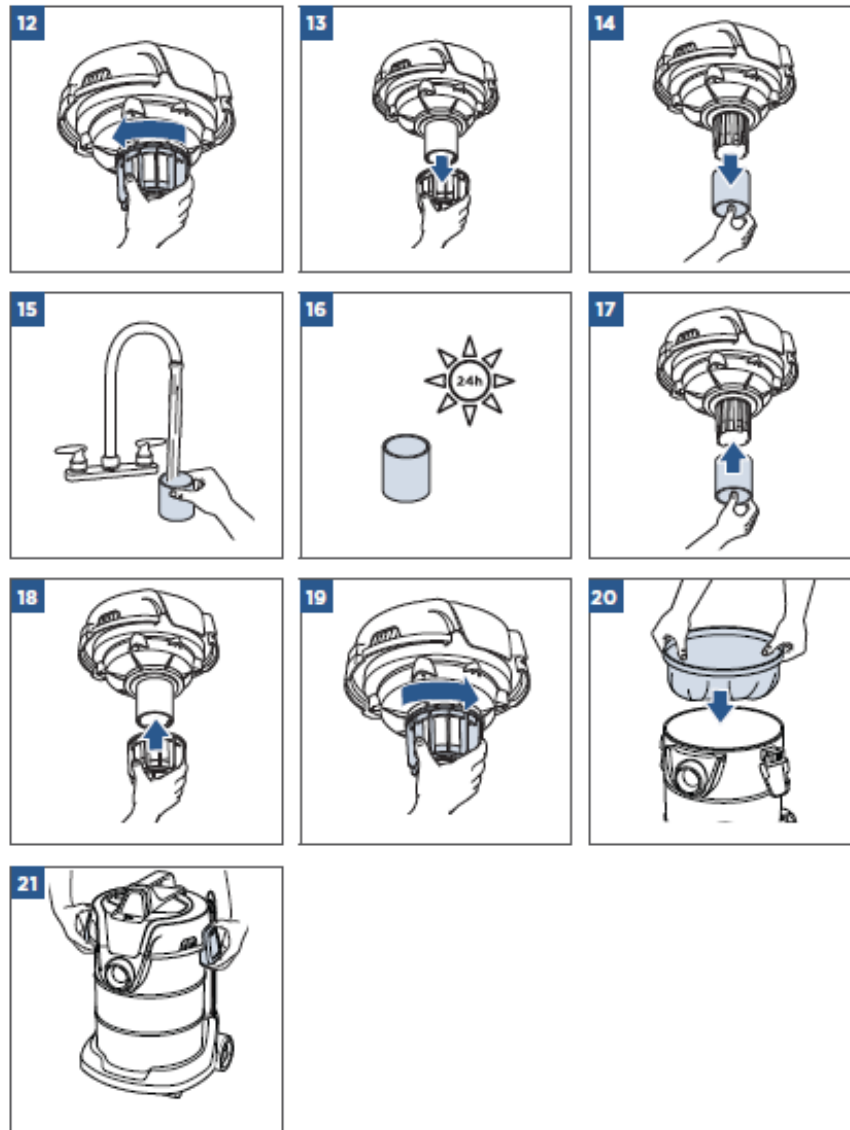
How to ON/OFF





How To Use





Documents / Resources

<p>bissell PRACTICE CLEAN™ WET + DRY DRUM VACUUM MODEL 2026M</p>	<p>BISSELL 2026M Dry Drum Vacuum [pdf] Instruction Manual 2026M Dry Drum Vacuum, 2026M, Dry Drum Vacuum</p>
---	---

References

- [BISSELL](#)