

BIRD-X B0D719D7F9 Bird One Way Exclusion Door Instruction Manual

[Home](#) » [Bird-X](#) » BIRD-X B0D719D7F9 Bird One Way Exclusion Door Instruction Manual 

Contents

- 1 BIRD-X B0D719D7F9 Bird One Way Exclusion Door
- 2 BatChute Instructions
- 3 Step 1: Inspection
- 4 Step 2: Position the BatChute
- 5 Step 3: Seal Additional Gaps
- 6 Step 4: Monitor Bat Activity
- 7 Step 5: Prevent Future Infestations
- 8 Specifications:
- 9 Frequently Asked Questions (FAQ):
 - 9.1 Q: How long should I wait before removing the BatChute?
 - 9.2 Q: Can I reuse the BatChute?
- 10 Documents / Resources
 - 10.1 References
- 11 Related Posts

BIRD-X B0D719D7F9 Bird One Way Exclusion Door

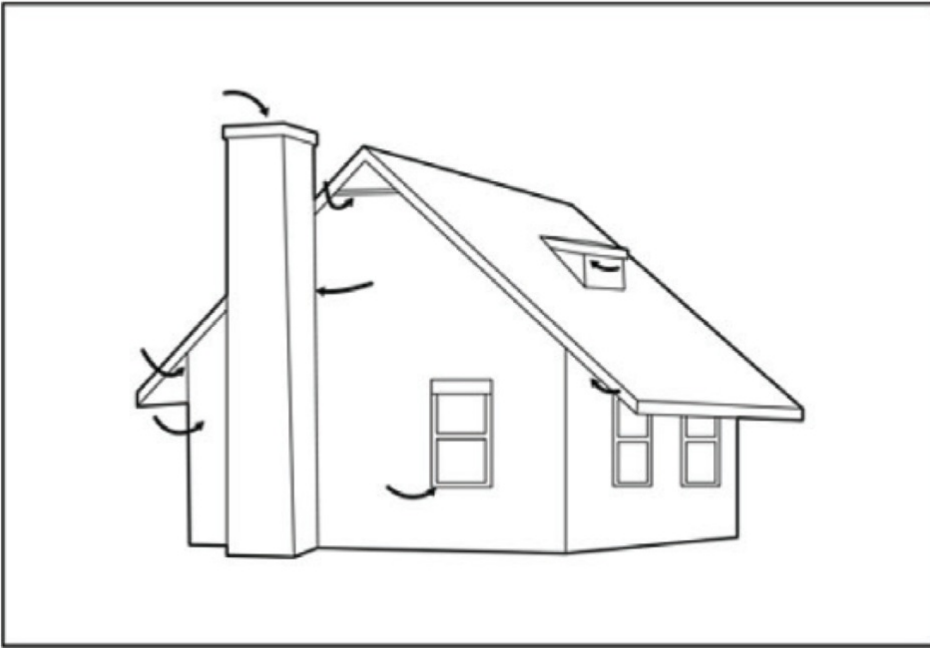
INSTRUCTION MANUAL

BatChute Instructions

WARNING: Incorrect installation, adjustment, or modification can lead to property damage, animal injury, or even death. Read the instruction manual carefully and completely before beginning the installation.

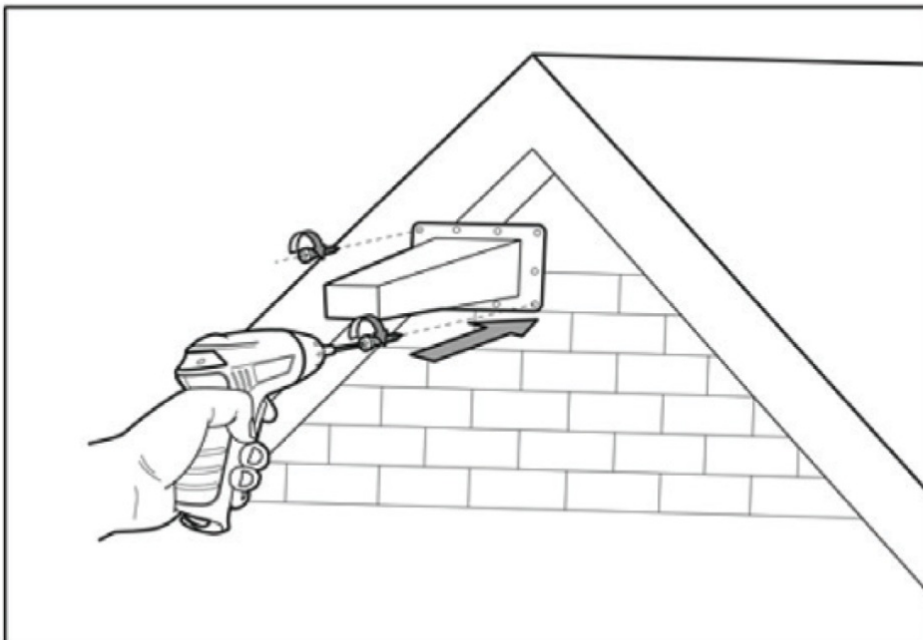
WARNING: In some areas, removing bats is illegal. Before proceeding, consult your local government agency for regulations. Do not install this device during bat pup season (April – August). Bat pups are unable to fly until they

are fully mobile, and installing during this time is inhumane, as it will result in the death of the pups.



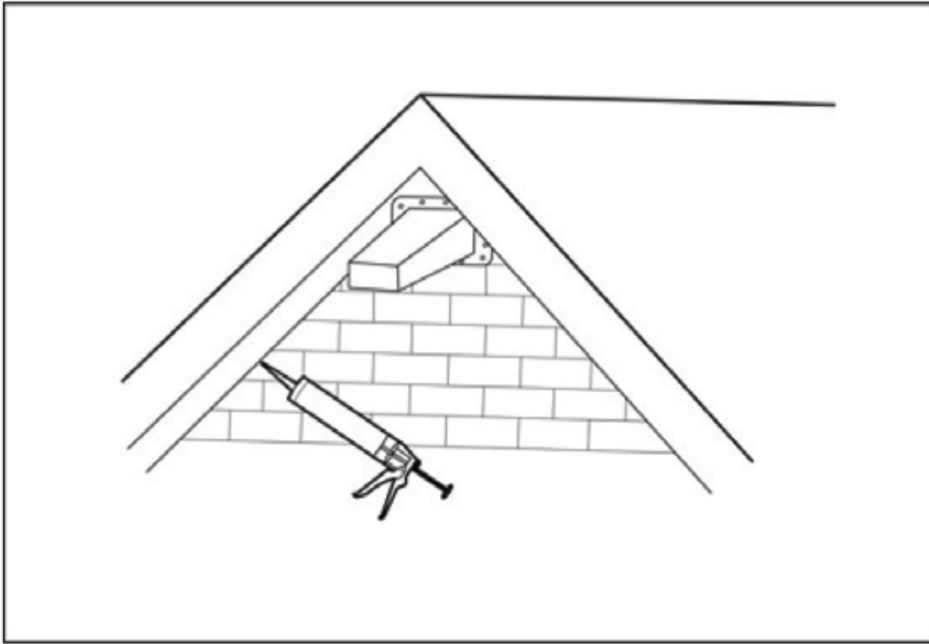
Step 1: Inspection

Carefully examine the property for any bat entry points. Look for gaps larger than $\frac{3}{4}$ " x $\frac{3}{4}$ " or bat guano around the base of the building or stuck to walls/siding.



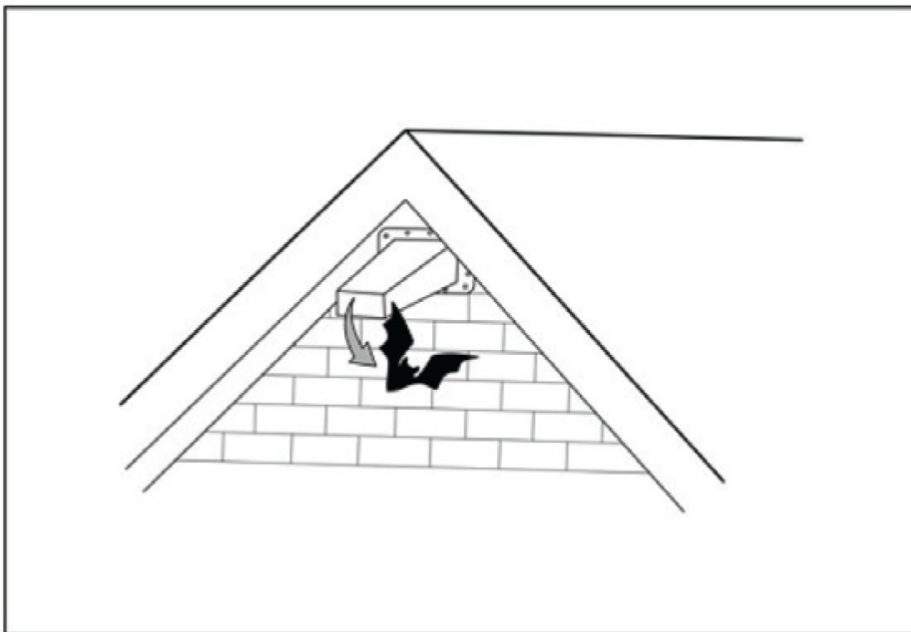
Step 2: Position the BatChute

Place the BatChute securely over the main entry hole. If necessary, use scissors to trim the base to fit the desired shape. Ensure that it is tightly secured using screws, leaving no gaps for bats to re-enter.



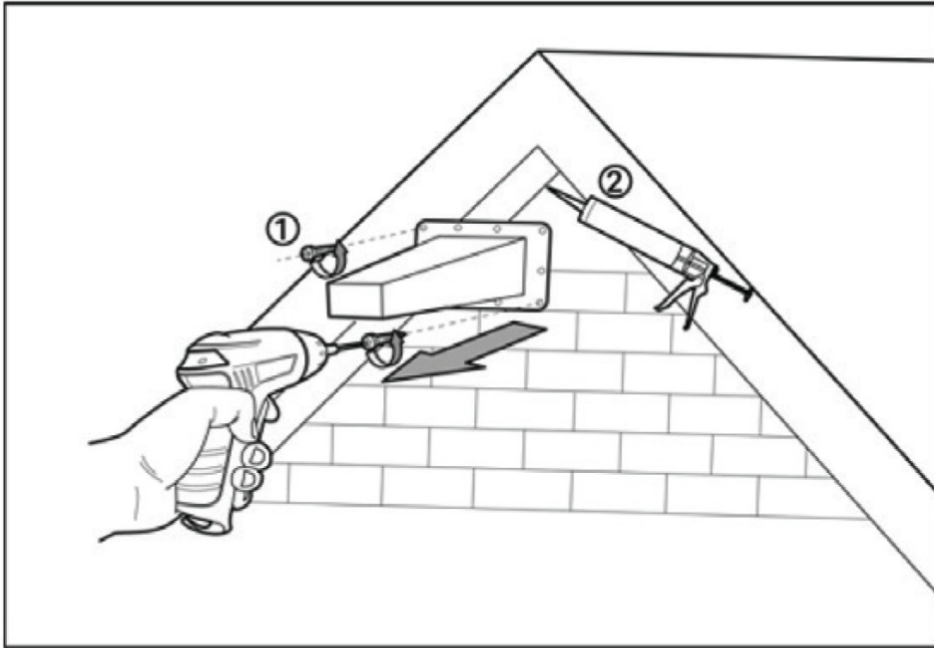
Step 3: Seal Additional Gaps

Seal all remaining gaps in the surrounding area to prevent bats from finding alternative entry points into the structure.



Step 4: Monitor Bat Activity

Allow 24-72 hours for the bats to exit through the BatChute. After this period, listen for any noises or observe signs of activity. Perform a thorough inspection to confirm that no new holes or damages have appeared. Once you are sure, carefully remove the BatChute.



Step 5: Prevent Future Infestations

Repair the original entry hole where the BatChute was installed to prevent future bat infestations.

Specifications:

- Product Name: BatChute
 - Usage: Bat exclusion device
 - Material: Durable plastic
 - Dimensions: Adjustable base for various entry hole sizes
-

Frequently Asked Questions (FAQ):


Q: How long should I wait before removing the BatChute?

A: Allow 24-72 hours for the bats to exit before removing the BatChute. Monitor for any signs of bat activity before proceeding.

Q: Can I reuse the BatChute?

A: The BatChute is designed for one-time use. For any future bat exclusion needs, a new BatChute should be installed.

Documents / Resources

	<p>BIRD-X B0D719D7F9 Bird One Way Exclusion Door [pdf] Instruction Manual B0D719D7F9 Bird One Way Exclusion Door, B0D719D7F9, Bird One Way Exclusion Door, Way Exclusion Door, Exclusion Door</p>
--	--

References

- [User Manual](#)

[Manuals+](#), [Privacy Policy](#)

This website is an independent publication and is neither affiliated with nor endorsed by any of the trademark owners. The "Bluetooth®" word mark and logos are registered trademarks owned by Bluetooth SIG, Inc. The "Wi-Fi®" word mark and logos are registered trademarks owned by the Wi-Fi Alliance. Any use of these marks on this website does not imply any affiliation with or endorsement.