



# Bird Buddy Original Smart Bird Feeder User Manual

[Home](#) » [Bird Buddy](#) » Bird Buddy Original Smart Bird Feeder User Manual 

## Contents

- [1 Bird Buddy Original Smart Bird Feeder User Manual](#)
- [2 Introduction](#)
- [3 How To Installation](#)
- [4 Product Specifications](#)
- [5 Product Features](#)
- [6 Usage Instructions](#)
- [7 Care and Maintenance](#)
- [8 Safety Precautions](#)
- [9 Troubleshooting](#)
- [10 Warranty](#)
- [11 FAQs](#)
- [12 References](#)

# Birdbuddy

**Bird Buddy Original Smart Bird Feeder User Manual**



## Introduction

The innovative Bird Buddy Original Smart Bird Feeder blends contemporary technology with the easy pleasure of birdwatching. This cutting-edge bird feeder has an integrated HD camera and artificial intelligence capabilities to improve your bird-feeding experience. The camera records beautiful, close-up video of visiting birds, which is then streamed live to your smartphone through a special app.

The app not only lets you watch birds in real-time, but it also uses artificial intelligence (AI) to identify different bird species, giving you informative details about the feathered visitors to your backyard. The Bird Buddy is a great addition to any outdoor area or garden for anyone who enjoys being outdoors because it allows you to share your birdwatching experiences with loved ones, connect with nature, and learn about the local birdlife.

## What's in the box?



- 1 × Smart Bird Feeder with AI-Powered Camera
- 1 × Detachable Solar Roof
- 1 × Metal hanger
- 1 × Universal mount
- 4 × Phillips head screws
- 1 × Seed scoop
- 1 × USB-C charging cable
- Charging brick not included

## How To Installation

- The universal feeder mount fits on any standard 1"/25 mm diameter pole.



- Pole not included



- Hang your feeder anywhere by sliding the metal hanger underneath the roof.

## Product Specifications



- **dimensions:**

The bird feeder's actual dimensions include its height, breadth, and depth.

- **Weight:**

The bird feeder's weight is relevant for handling and installation.

- **Material:**

The bird feeder's construction materials could have an impact on its weather resistance and durability.

- **Power Source:**

Details regarding the bird feeder's power supply, including whether it uses batteries or an adapter.

- **Camera Specifications:**

Information about the resolution, field of view, and night vision capabilities of the built-in camera.

- **Connectivity:**

Details about the device's connections to other devices and your smartphone (e.g., Wi-Fi, Bluetooth).

- **Bird Food Capacity:**

The feeder's maximum capacity for holding bird food.

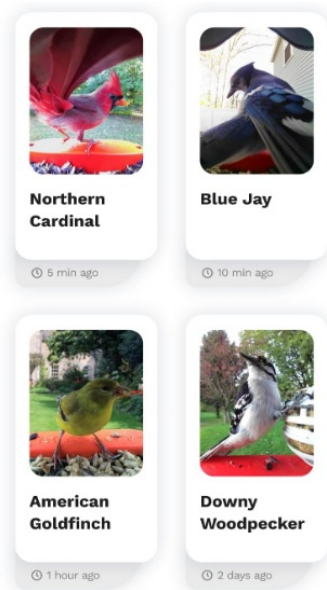
- **Feeding Ports for Birds:**

The number of feeding ports where birds can get food.

- **Weather Resistance:**

The bird feeder's ability to tolerate different weather conditions, such as snow or rain.

## Discover & collect bird species



- Learn about new bird visitors with smart AI species recognition.
- Fill up your collection with all your local birds.
- Browse helpful tips on what kind of bird food attracts certain species.

## Enjoy stunning photos



## Care-free viewing with the solar roof



- Fully charge your feeder with three days of sunlight.
- Easily detach and rotate the solar roof by 180 degrees to strategically position the side with the solar panel.

### What makes it smart?



- High-Resolution Smart Camera
- AI Bird Species Recognition
- Bird Arrival Notifications
- In-App Learning Experience

### Designed with nature in mind



### Product Features

- **Live streaming:**

Using a smartphone, you can view birds visiting the feeder in real time.

- **AI Bird Identification:**

This technology uses artificial intelligence to recognize and identify different species of birds that come to the feeder.

- **Motion Detection:**

Devices that detect the approach of birds or other wildlife and turn on the camera.

- **Remote Access:**

Using a specific app, one can remotely operate and keep an eye on the bird feeder.

- **Notification Alerts:**

When activity is detected at the feeder, an alert is sent to your smartphone. Design elements of a bird feeder that are both aesthetically pleasing and practical, drawing birds in and simplifying operation.

- **Data Storage:**

Details regarding the location (local or cloud) of video recordings and bird identification data.

- **Compatibility:**

Ready for a range of smartphone operating systems (Android, iOS).

## Usage Instructions

- **Setup:**

Detailed directions for assembling and positioning the bird feeder in your outdoor area.

- **Turning On/Off:**

Instructions for turning on and off the device, along with information on using a power adapter or installing a battery. Instructions for setting up your home Wi-Fi network to connect the bird feeder.

- **How to Download and Install the App:**

Instructions for downloading and installing the specific app for remote surveillance.

- **Getting to the Live Feed:**

A guide to using the AI bird identification features and live video feed.

- **Configuring Preferences:**

Guidelines for changing the camera, alert settings, and other attributes.

- **Maintenance:**

Advice on how to keep the bird feeder operating at its best, including cleaning, replenishing food, and general upkeep.

- **Troubleshooting:**

Typical problems and their fixes, as well as customer service contact details.

## Care and Maintenance

- **Frequent Cleaning:**

To avoid the accumulation of dirt, debris, and mold, clean the bird feeder regularly. After cleaning with a soft brush and light soap, give everything a good rinse.

- **Refill Food:**

To draw and feed the birds, keep the bird feeder filled with fresh food. Take out any spoiled or outdated food right away. Examine the feeder for any indications of wear, damage, or loose components. As necessary, replace or fix damaged parts to guarantee the device's operation and security.

- **Battery Replacement:**

If the bird feeder requires batteries, change them out as recommended by the manufacturer.

- **Camera Lens Cleaning:**

To ensure crisp video quality, clean the camera lens regularly.

## Safety Precautions

- **Outdoor Use:**

Position the bird feeder in a spot that is suitable for it outside, away from busy streets or any places where it could trip someone.

- **Secure Mounting:**

Make sure the feeder is positioned or mounted securely to prevent wildlife or inclement weather from toppling it.

- **Child and Pet Safety:**

When installing the bird feeder, take into account the safety of your children and pets. Make sure it's out of their grasp.

- **Weatherproofing:**

To extend the life of a bird feeder that is not completely waterproof, think about covering it or bringing it inside during severe weather.

## Troubleshooting

- **Problems with power:**

Make sure the power source—whether it's an adapter or batteries—is operating properly.

- **Connectivity:**

Make sure your smartphone or other device has a steady internet connection and that the bird feeder is linked to your Wi-Fi network.

- **App Issues:**

You can try reinstalling the dedicated app or checking for updates if you're having trouble with it.

- **Camera Issues:**

Make sure the camera is positioned correctly for the best viewing experience and clean the lens if it isn't operating as it should.

- **Notification Problems:**

Verify that you are correctly receiving alerts by reviewing the app's notification settings.

## Warranty

Consult the manufacturer's warranty details, which can be found on their official website or in the product's documentation. The scope and duration of warranties can differ. Usually, they provide a limited-time coverage for flaws in the materials and workmanship. For warranty claims, adhere to the manufacturer's instructions and, if necessary, register your product.

## FAQs

How does the Bird Buddy Smart Bird Feeder work?

The Bird Buddy has a built-in camera that captures bird activity, and it connects to your smartphone via an app, allowing you to view live footage and receive bird species identification.

What type of birds will I attract with the Bird Buddy?

The types of birds you attract will depend on your location and the type of bird food you use. Common visitors may include sparrows, finches, chickadees, and more.

How do I set up the Bird Buddy in my backyard?

Follow the installation instructions provided in the user manual. Typically, you'll need to mount it securely and ensure it's in a location with good visibility.

Is the Bird Buddy weatherproof?

Check the product specifications and user manual for information on weather resistance. Some models may be weatherproof, while others may require protection from the elements.

How do I connect the Bird Buddy to my Wi-Fi network?

Refer to the user manual for detailed instructions on connecting the device to your Wi-Fi network.

Can I watch the bird feeder's live feed remotely when I'm not at home?

Yes, most smart bird feeders allow remote viewing through a dedicated smartphone app.

How does the bird identification feature work?

The bird identification feature typically uses artificial intelligence (AI) to analyze images and identify bird species based on their characteristics, which is then displayed in the app.

What happens to the recorded bird footage?

Check where the recorded footage is stored; it might be stored locally on an SD card or in the cloud, depending on the model.

o I need to clean the Bird Buddy regularly?

Yes, regular cleaning is essential to maintain clear camera footage and keep the bird feeder hygienic for the birds.

What happens if the Bird Buddy encounters technical issues?

Review the troubleshooting section in the user manual for guidance. Contact customer support if problems persist.

Are there any subscription fees for using the Bird Buddy app?

Check the terms and conditions associated with the app. Some features may require a subscription, while basic functionality is often free.

Is there a warranty for the Bird Buddy Smart Bird Feeder?



Refer to the warranty information provided by the manufacturer to understand what's covered and for how long. Register your product if necessary to activate the warranty.

---

## References

- [User Manual](#)

Manuals+.