



Binefia B086XMH9R Water Flosser for Teeth Cordless with 5 Modes Instruction Manual

[Home](#) » [Binefia](#) » **Binefia B086XMH9R Water Flosser for Teeth Cordless with 5 Modes Instruction Manual** 

Binefia B086XMH9R Water Flosser for Teeth Cordless with 5 Modes Instruction Manual



'Thank You for Purchasing the Biennia Portable Oral Irrigator

Oral Irrigators use pulsing water flows to clean the teeth, and can remove harmful bacteria hidden deep within dental cracks and the gum- places which cannot be cleaned via brushing of the teeth alone. Traditional toothbrushes are unable to remove scraps of food or harmful bacteria that are deeply hidden. Dental floss can only make contact with a limited area beneath the gum. The Binefia Oral Irrigator can clean out harmful bacteria hidden in dental cracks and under the gum line.

Contents

1 IMPORTANT SAFEGUARDS

2 WARNING:

3 SAVE THESE INSTRUCTIONS

4 Product Accessories

5 Operating Procedures

6 Charging

7 Battery Handling

8 Common Problems And Solutions

9 Documents / Resources

9.1 References

IMPORTANT SAFEGUARDS

When using electrical products, especially when children are present the basic safety precautions below should always be followed.

READ ALL INSTRUCTIONS BEFORE USING.

DANGERS:

To reduce the risk of electrocution:

- Do not handle charger with wet hands.
- Keep charging unit and cord away from heated surfaces
- Do not drop or insert any foreign object into any opening on the product
- Do not place charger in or drop charger into water or other liquid
- Check the charger cord for damage before the first use and during the life of the product
- Do not use iodine, saline (salt solution), or water insoluble concentrated essential oils in this product. Use of these can reduce performance and will shorten the life of the product. Use of these products may void warranty.

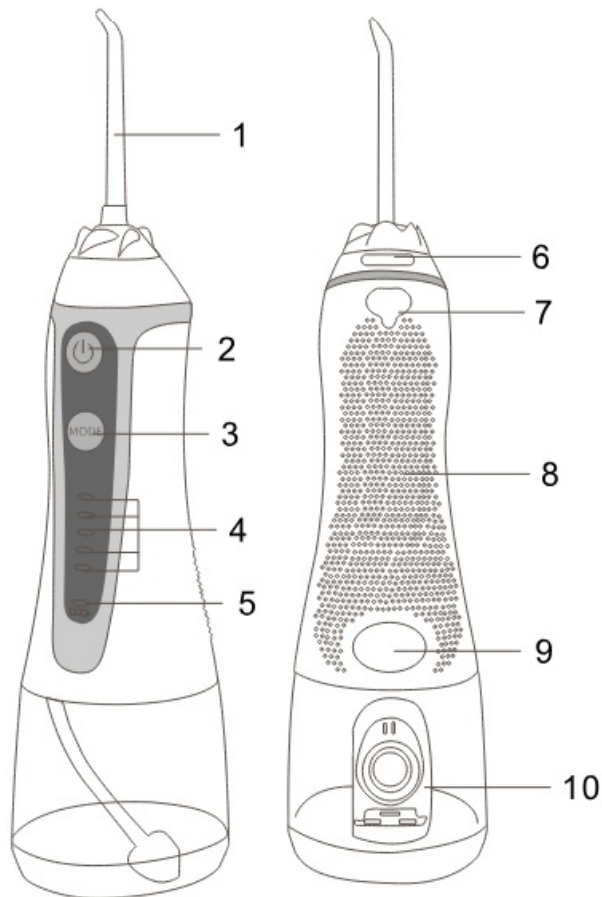
WARNING:

To reduce the risk of burns, electric shock, fire, serious injury, or damage issues:

- It's normal for gum to bleed when the first use of water flosser, depending on different gum bearing ability.
- Do not direct water flow under the tongue, into the ear or other delicate organs. This product is capable of producing pressures that may cause serious damage to these organs. Refer to operating instructions for correct usage.
- Do not use mouth washes/rinses that contain iodine, bleach, or tea tree oil.
- Do not use while wearing any oral jewelry. Please put off prior to use.
- Do not use if you have an open wound on your tongue or in your mouth.
- Do not plug this device into a voltage system that is different from the voltage system specified on the device or charger.
- Fill reservoir with water or other solutions recommended by dental professional.
- Do not operate where oxygen or aerosol sprays are being used.

- For household use only. Do not use outdoors.
- Closely instruct and supervise children and individuals-with special needs in the proper use of this product
- Children should be supervised to ensure that they donor play with the appliance,
- For household use only. Do not use outdoors.
- If your physician advise you to receive antibiotic premedication, you should consult your dentist before using this instrument or any other oral hygiene aid.

SAVE THESE INSTRUCTIONS



1. Jet Tip
2. ON/OFF Switch
3. Mode Button
4. Mode Indicator Lights
5. Electricity Indicator
6. Jet tip disassembly button
7. Recharge Socket
8. Non-slip design
9. Water Tank Button
10. Water Entry Hole

Product Accessories

Tongue scraper tip



Orthodontic tip



Periodontal tip



Standard tip




Toothbrush



USB power cable



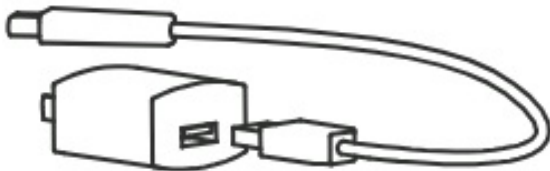
-  Portable Oral Irrigator Charger adaptor not included.
- Please only use 5V/1A Charger adapter with Benefit USB power
- cable to charge your Biennia Portable Oral Irrigator.
- Don't use a charger adaptor exceeds 5V/1A for safety.

Operating Procedures



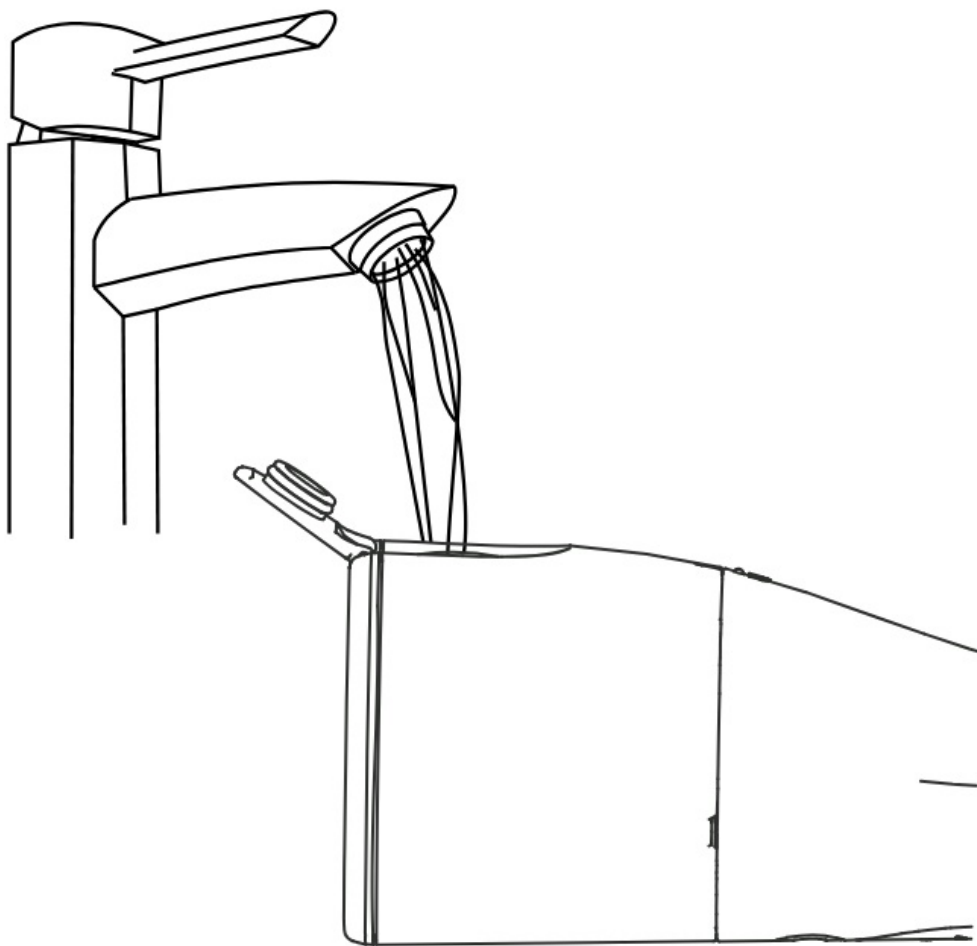
Preparation Work

Extremely important! Prior to using for the first time, please fully charge the device, approximately 5 hours, and insert the USB plug into the power socket, as well as connect to a power supply. During power charging the product cannot be used.



Filling the Reservoir

As shown in Diagram, open the water tank lid and pour water into the water tank.

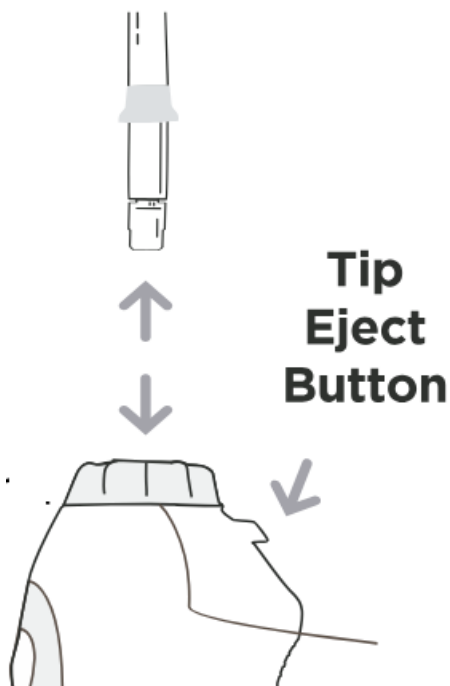


Inserting and Removing Tips

Insert tip into the center of the knob at the top of the Water Flosser handle. Press firmly until the tip clicks into place.

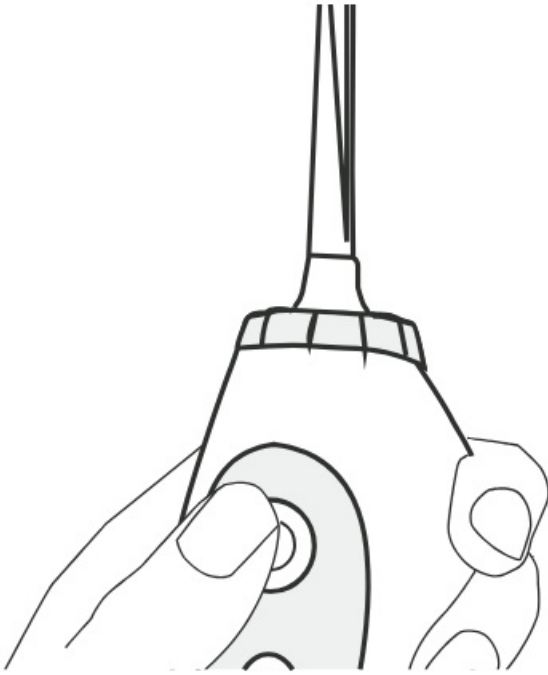
To remove the tip from the handle, press the tip eject button and pull tip from the handle.

CAUTION: Do not press tip eject button while unit is running



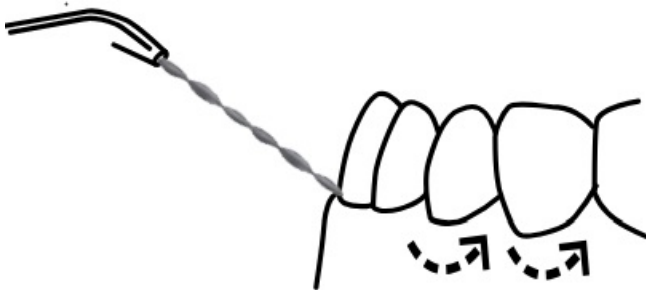
Adjusting the Pressure Setting

You can adjust the pressure setting on your Water Flosser by pressing the mode button on the handle. Start with the lowest setting and increase to your liking.



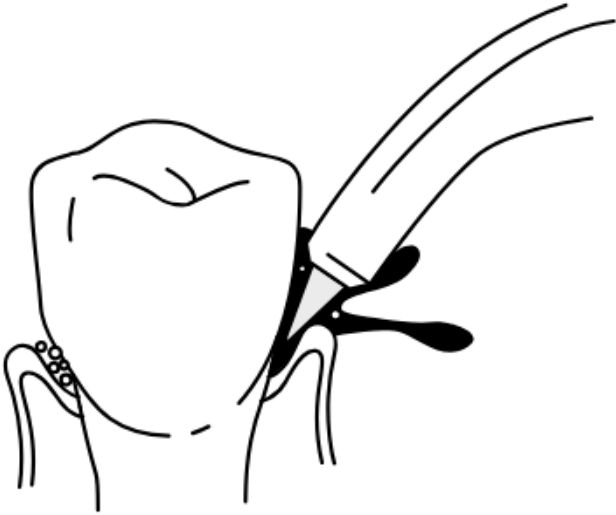
Standard Tip

- Been over the sink and guide the jet to your teeth and gums, Glide the handle switch up to start the water stream. Keep your mouth slightly open to allow the water to run into the sink. Direct the stream of water towards the germline at 90 degrees, so that contact is made where the tooth and gums meet. Manoeuvre the flow of water from tooth to tooth remembering to pause briefly between each tooth.



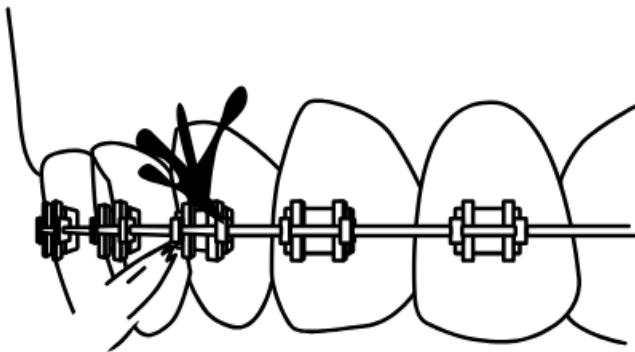
Periodontal Tip

- Place the periodontal tip in contact between teeth and the germline. Lean the soft tip against a tooth at a 45-degree angle and gently place the tip under the germline, into the pocket. Start the irrigator by setting it at the lowest pressure and clean by gently following germline, inserting the periodontal tip in between teeth. Continue tracing along the germline to massage the gums and safely deliver solution into the gingival pockets below the germline.



Orthodontic Tip

- Use the Orthodontic Tip to simultaneously brush and rinse hard- to-reach areas around braces,crowns,bridges and implants. Start on the last molar(back tooth). Place tip at 90degree angle to the tooth at the germline. Gently glide tip along germline, pausing briefly to lightly brush area between teeth and all around orthodontic bracket, before proceeding to the next tooth and outside of both the upper and lower teeth. Continue process until you have cleaned the inside

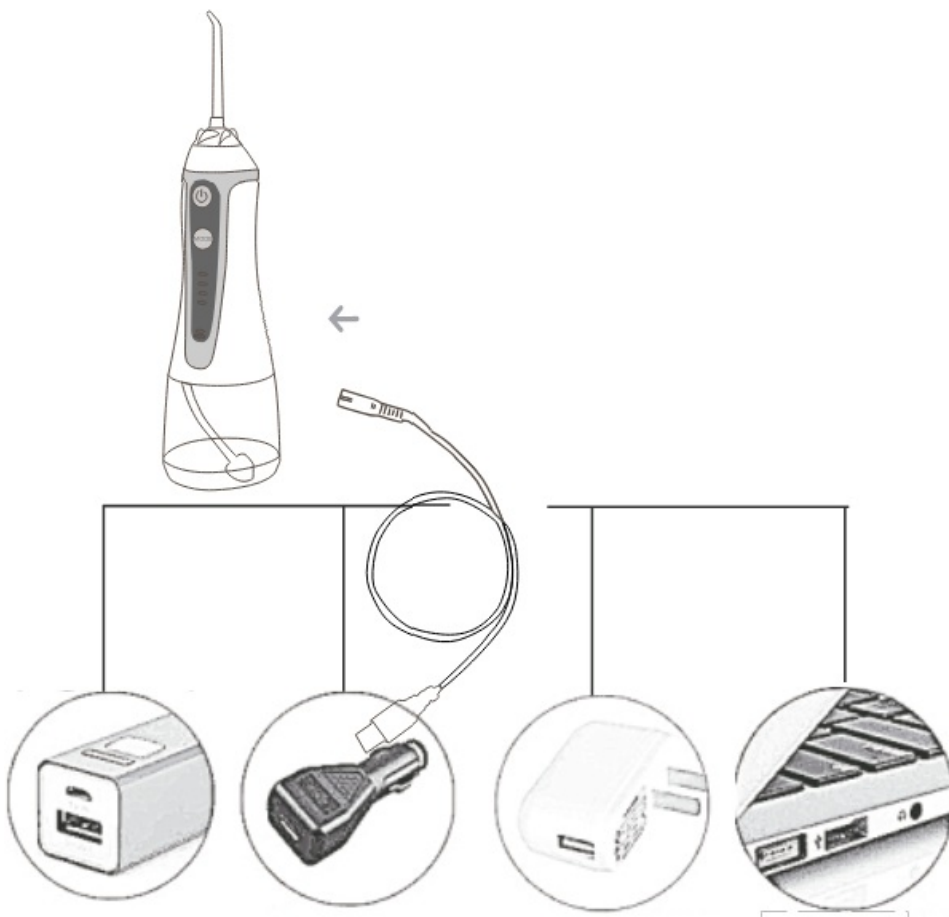


Tongue Cleaner Tip

- Lean your head over the sink. Glide the pressure button to the lowest setting. Start the irrigator and place the tongue cleaner at the back of your tongue and move it forward to clean your tongue. Repeat to cover entire tongue. Set the pressure to the lowest setting and adjust to a hinger setting for more water pressure as it feels comfortable.



Charging



- This product does not come with an AC/DC charger. The unit is charge through devices with 5V USB's power capabilities such as mobile phone, laptop, USB power wall charger, etc. The charge indicator on the handle will flash when charging and will stay on continuously when the unit is fully charged. A complete recharge will take 3-5 hours.
- When the product is out of power, the power indicator will flash red to remind you that the product needs to be charged.

Battery Disposal

- For the first use, please charge for more than 5 hours. Only after being fully charged can the unit be used for first time
- Please have the appliance full charged when it is to be stored for a long period of time.
- To maximize the battery life, please charge the unit timely.

Battery Handling

- Please recycle the lithium battery once it is exhausted. Please have the local recycling center recycle batteries, which are not subjected to replacement.

Common Problems And Solutions

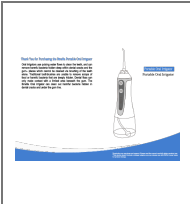
Problem	Cause	Corrective Action
Reservoir leaks	Seal ring is abnormal	Remove the seal ring and reinstall
Low water pressure	Low battery	Recharge the device
	nozzle head blocks	Replace with new nozzle heads
Lasts only few minutes with full charge	Dead battery	Contact retailers
	Charging cord	Try with new charging cable
	Adapter broken	Try with new adapter
Motor makes sound but no water coming out	Nozzle head blocks	Replace with new tips
	Suction valve dislocatlo	Keep device on, fill water to the hole where nozzle head goes into
Motor doesn't make sound	Low Battery (Keep the device idle for more than 3 month)	Activate the battery by recharging it for 16 hours
Product stopped woricing suddenly	Overheating protection is activated (Continuous use 5 tanks of water with highest pressure)	Restart the device In 2 hour

If the above methods cannot resolve these problems, please contact us at Binefia@outlook.com to get support.

CAUTIONS:

- At the time of initial usage, please select "low mode," in order to avoid the gums bleeding due to lack of adaption to usage. After consistent usage for two weeks there should be improvements. If bleeding is excessive or bleeding continues after two weeks, chronic gum inflammation could be an issue, and it is recommended that professional dental treatment be sought.
- It is not recommended that the product be used by children under the age of 5

Documents / Resources

	<p>Binefia B086XMH9R Water Flosser for Teeth Cordless with 5 Modes [pdf] Instruction Manual</p> <p>B086XMH9R Water Flosser for Teeth Cordless with 5 Modes, B086XMH9R, Water Flosser f or Teeth Cordless with 5 Modes, Flosser for Teeth Cordless with 5 Modes, Teeth Cordless with 5 Modes, Cordless with 5 Modes, 5 Modes</p>
---	---

References

- [User Manual](#)

[Manuals+](#), [Privacy Policy](#)

This website is an independent publication and is neither affiliated with nor endorsed by any of the trademark owners. The "Bluetooth®" word mark and logos are registered trademarks owned by Bluetooth SIG, Inc. The "Wi-Fi®" word mark and logos are registered trademarks owned by the Wi-Fi Alliance. Any use of these marks on this website does not imply any affiliation with or endorsement.