



bimar AP12, UFO-R1 IR WiFi Remote Control Instruction Manual

[Home](#) » [bimar](#) » bimar AP12, UFO-R1 IR WiFi Remote Control Instruction Manual 



Contents

- [1 AP12, UFO-R1 IR WiFi Remote Control](#)
- [2 SAFETY NOTICES](#)
- [3 INSTALLATION](#)
- [4 DESCRIPTION](#)
- [5 Pairing the device with your smartphone](#)
- [6 Use](#)
- [7 CLEANING AND MAINTENANCE](#)
- [8 GUARANTEE](#)
- [9 Documents / Resources](#)
 - [9.1 References](#)
- [10 Related Posts](#)

AP12, UFO-R1 IR WiFi Remote Control



This symbol tells you to read these instructions carefully before using the appliance, and to inform any third parties if necessary. Keep the instruction booklet for further reference throughout the lifetime of the appliance. If when reading these instructions you find any parts difficult to understand or have any

doubts, contact the manufacturer at the address provided on the back page before using the product.



Only use the appliance indoors.



WARNING!

Warnings and installation, use, cleaning and maintenance procedures may vary slightly from those described in this manual; for further details, please consult the updated on-line manual at www.bimaritaly.it.

SAFETY NOTICES

- This device transforms your smartphone into a single, universal remote control by providing control of all home devices fitted with infrared remote control (frequency 38Khz), only for domestic and similar locations, in accordance with these instructions.
- This device intentionally emits and/or receives radio waves for radiocommunication and/or radiodetermination purposes.

Examples of household appliances are appliances for typical household functions, those used in the home, or those which may be used for typical household functions even by untrained persons:

- in shops, offices and other similar workplaces;
- on farms and in similar locations;
- by the customers of hotels, motels and other residential environments;
- in bed and breakfast establishments.

Any other use constitutes misuse and is hazardous. The manufacturer cannot be held liable for any damage arising from misuse or incorrect or irresponsible use, and/or from repairs carried out by unqualified persons.

- The device is not a toy. The device must be kept out of reach of children and people with impaired physical, sensory or mental capabilities and pets. Children must be supervised to ensure that they do not play with the device. Cleaning and maintenance intended to be carried out by the user should not be done by children unless they are supervised.
- Check that the device does not come into contact with water or other liquids. If it is accidentally wet or immersed in a liquid, first disconnect the power supply by turning off the control panel switch, and only then remove the plug from the power socket. Dry both the plug and the power socket carefully before reactivating the power socket. Reconnect the plug to the power socket and then use the appliance. If in doubt, call in qualified staff.
- If the power cord is damaged, it must be replaced by the manufacturer or its aftersales service, or by a person with similar qualifications, to prevent all risks.
- To avoid all risk of electric shock, never immerse the device or the power cord in water or any other liquid.
- Do not touch the appliance with wet hands or feet.
- Never leave the device exposed to the weather (sun, rain, etc.).
- If the appliance is dropped or malfunctions, disconnect the power cord at once. Check all parts for damage and do not switch it on unless certain it is intact: if in doubt, call in qualified staff.
- Do not pull on the power cable or the appliance itself to remove the plug from the power socket.
- Do not move the appliance by pulling the cable.

INSTALLATION

- After removing the packaging, check that the appliance is intact; if in doubt, do not use it and call in qualified staff. Packaging components (plastic bags, nails, etc.) must not be left within reach of children since they are potentially hazardous; dispose of them in accordance with the current law.
- Before each use, check that the appliance is in good condition and ensure that the power cord is not damaged and do not switch it on unless certain it is intact: if in doubt, call in qualified staff.
- Make sure that the appliance is functioning correctly; otherwise, switch off the appliance and have it checked by qualified staff.
- Place the device in the same room (there must be no barriers between the appliance and the device) on a smooth, horizontal, stable, non-slip supporting surface large enough to prevent it from falling, well away from other heat sources (stoves, fan heaters, etc.), flammable materials (curtains, liquids, gas cylinders, etc.) and from sinks etc. containing liquids.
- Make sure that the cable is correctly positioned and is not wound around the device or twisted, to prevent the device from falling. Check that no-one can trip over it, to avoid accidental falls or injuries.
- In case of a fault or malfunction, switch the appliance off and have it checked by qualified staff; repairs by unqualified staff may be dangerous and lead to the loss of warranty cover.

DESCRIPTION

Smart device with integrated Wifi module, usable via Smartphone through the applications with Android or iOS operating systems.

- It stores and adjusts all the functions inserted on the remote control, such as: power on / off, functions, channels, volume, etc.
- Infrared remote controls must have a 38Khz frequency.
- 360° large-scale infrared signal coverage, with a distance of ≤ 8 meters. The device must be positioned so that there is free space; obstacles and walls prevent the device from working properly.
- Make sure that the router is for home use, the WiFi network should be set only to the 2.4GHz frequency (5GHz frequency is not supported).

Generally, routers have double bands set: (2.4 and 5) GHz; most dual-band routers automatically broadcast on both bands, for activation and configuration (of the fixed frequency at 2.4GHz) it is necessary to access the IP address of the router and look for the network settings section.

- Check that the router is for domestic use, that there are no access restrictions except the password, that the Wi-Fi network is 2.4 GHz, and that there is a strong, uniform Wi-Fi signal in the room where the device is to be installed.
- Make sure that the smartphone is connected to the wi-fi network to be used for the appliance.

First Installation/Setup

1.1 Install the “BIMAR life Smart” App via Google Play (Android) or AppStore (iOS), or scan the QR code provided here.

For Android



For iOS



<http://uqr.to/c8dl>
<http://uqr.to/c8dm>

1.2 Once installed, the app icon appears. Click the “Bimar Live Smart” icon to run the app.

1.3 At the first access, register and fill in your credentials:

– click on “Create a new account”, confirm “I agree” for the data relating to the Privacy Policy (by pressing: ” ” the text of the informative report pursuant to Article 13 of the 2016/679 European Regulation appears, while by selecting “User Agreement” the Bimar srl Service Agreement appears)

– enter your email address (select the desired country)

– click on the writing “Get the verification code”, wait for a few seconds and then enter the code received in the “Verification code” part using your registration email address (possibly also check the Junk e-mail folder, if you don’t receive it in the inbox folder).

1.4 Enter your personalized password and click “Done”.

If the procedure is carried out correctly, the control panel screen for using the application appears.

Pairing the device with your smartphone

2.1 Insert the Type-C connector of the charging cable into the socket below and all the way down, Fully insert the Type C connector of the charging cable into the socket in the rear and insert the other type USB connector in the adapter (not included in the pack) and fit the plug into the power socket. Insert a small tool or a pin fully into the hole (1) in the rear and press down for about five seconds; the light on the front will flash quickly.



2.2 Opening the APP on your smartphone: on the first screen click “ADD DEVICE” or click on ” ” in options, at the top right.

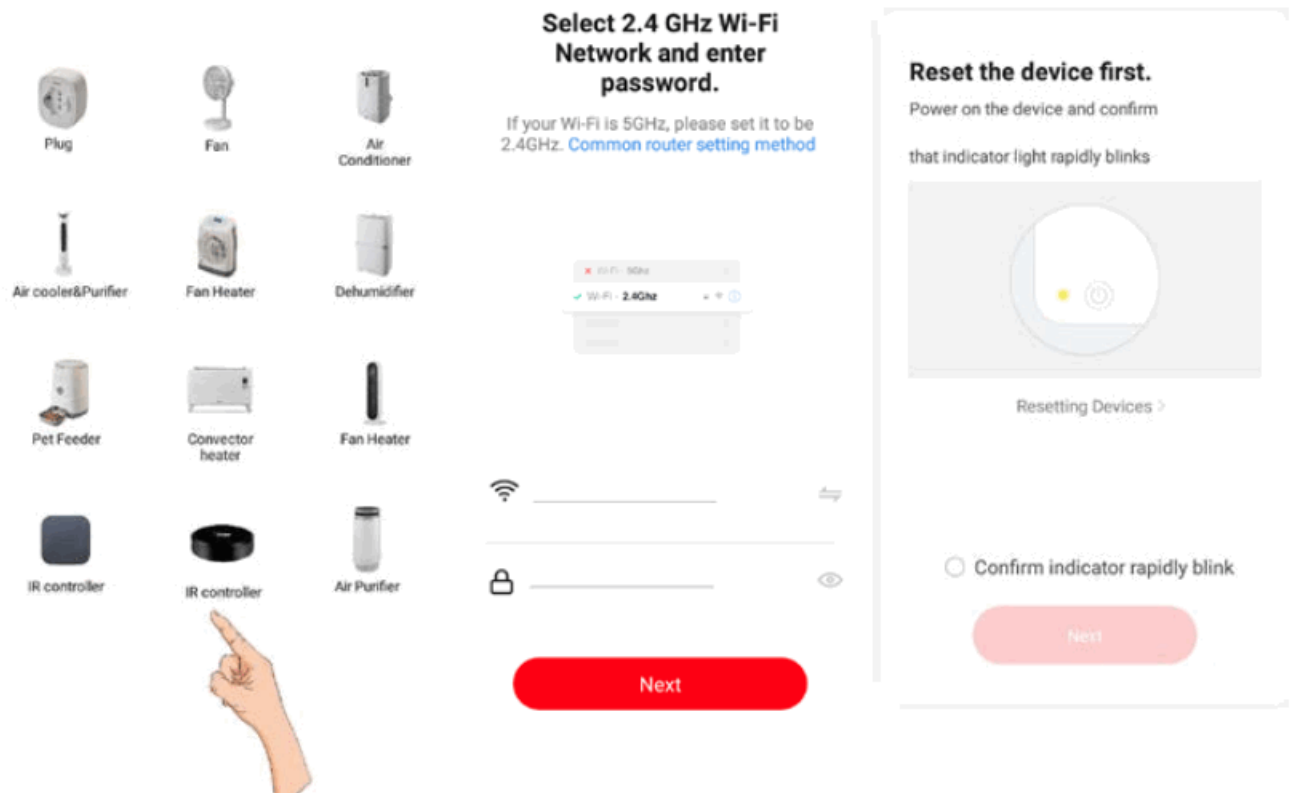


2.3 Next, click on the writing “ / Universal Remote Control”.

2.4 Then, “set up Wi-Fi”, Enter: Name and PASSWORD of your Wi-Fi network, and click on the “Next” symbol to activate the connection.

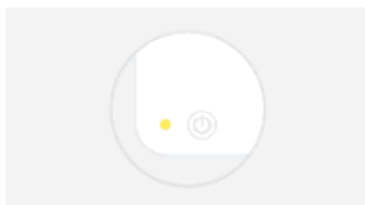
2.5 On the next screen: click on the writing “Confirm” to activate, then the LED will flash quickly; after this press on the “Next” symbol.

2.6 The countdown will start: Scanning devices ⇒ Register the device on Cloud ⇒ Start the device that stops when the connection between your device and the smartphone has occurred ⇒ End.



Reset the device first.

Power on the device and confirm
that indicator light rapidly blinks



Resetting Devices >

☒ Confirm indicator rapidly blink

Next

Adding device...

Ensure that the Wi-Fi signal is good.



01:56



Added successfully



BHN2010R-1(LXQ-2038-WIF...)


Device added successfully


The device can also be paired using the “AP Mode”. Insert a small tool or a pin fully into the hole (1) in the rear and press down for about five seconds; the light on the front will flash quickly. Access the smartphone WI-FI settings and connect to the “Bimar Live Smart xxx” or “Smart Life xxx” network, then press “connect now”.





In case the operations described above do not work correctly, you need to reset the device, operating in this way: remove the device from the power supply and leave the device disconnected for 30 seconds. Connect the device to the power supply again, insert a small tool or a pin all the way into the hole (1) in the back for about five seconds and the front light will flash quickly.

Settings and customisations.

Open the smartphone screen and press  in the bottom right corner to customise the following functions: Home management, Message centre, Assistance centre, Configure (audio, alerts, info, cache memory clear).

Press  in the bottom centre to customise operation of the device to suit the various scenarios or operating situations provided by the APP (for example: Back home, Leaving home, Dawn, Goodnight, Temperature, Humidity, Weather, Air quality, Dawn/dusk) or in combination with other devices.

Press  in the bottom left corner and then in the top of the screen, for example: to customise (update and/or change where permitted) the appliance's position or the outdoor wind speed, air pressure, humidity and temperature (see right).

Press  top right to customise the following: Change Device name, Device position, Check Network, Third-party devices supported: Amazon Alexa, Google Assistant, Device, sharing, Create a Comment group, Device Info, Feedback, Update Firmware

The smartphone must be connected to Wi-Fi or cellular data network for remote control.

Voice control

The device is compatible with Amazon Alexa and Google Assistant voice controls. Open the corresponding App/connect the Skill (make sure that the account and password used are the same as those of the "Bimar Live Smart" app) and follow the settings.

Google Home: some basic vocal commands are:

– "OK Google" or "Hey Google", turn on XX (name of the device)

- “OK Google” or “Hey Google”, turn off XX (name of the device)
- etc.

Amazon Alexa: some basic vocal commands are:

- “Alexa”, turn on XX (name of the device)
- “Alexa”, turn off XX (name of the device)
- etc.

For the TV: try to say “Alexa” turn on the TV (set name of the device)/turn volume up or down/go to xxx Channel/turn off the TV.

Note: the voice control has preset functions, our customer service (assistenza.privati@bimar-spa.it) is always available to send an updated list of controls supported by the devices.

DIY devices do not support vocal commands.

Use

Connect the device via the cable (included in the package) to a power supply with USB input (input DC5V1A) and to the device, if they were not previously connected.

To pair a new remote control (38KHz frequency) to the device there are several solutions.

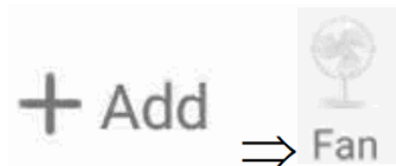
DIY



Open APP: press the key and perform the procedures described in the screen of your phone (1. Click the “+” key. 2. Briefly press the key on the remote control you want to pair).

Note: always place the remote control very close to the device (maximum distance 3cm) and press the button to pair. At the end of the pairing procedure, press the button at the top right “Save”.

BIMAR brand device (example: fan or fan heater)



1. Open the APP: press the key select: Bimar, press the “On-Off” key if the fan turns on select the “You can control” key (Try to combine at least 3 keys) and carry out the procedures described on the screen.



2. Open the APP: press the key the screen appears: Quick pairing and press the message: “I will not pair button by button” ⇒ carry out the procedures described in the screen.



3. Open APP: press the key the screen appears: Quick pairing and press the message: “OK” ⇒ carry out the procedures described in the screen.



Open APP: press the "On-Off" button if the product turns on, select the "You can control" button (Try to combine at least 3 buttons) and perform the procedures described on the screen.

Attention: if at the end of the procedure the keys do not correspond to the associated functions, it is possible to modify each key individually: open the device screen, press "Edit" at the top right, select "copied keys": press the key on the screen for a few seconds on the phone screen and then briefly press the button on the remote control. At the end of the pairing procedure, press the button at the top right "Save".

During long periods of inactivity, remove the plug from the electric socket.

CLEANING AND MAINTENANCE

Warning: before cleaning the appliance, switch it off and disconnect the plug from the power socket.

- Clean the body of the device with a soft, damp cloth: do not use metal scouring pads or abrasive products.
- If the device is to be out of use for a long period of time, cover it and store it in a dry place. It is best to return it to its original packaging to protect it from dust and damp.
- Do not immerse the appliance in water or any other liquid and do not wash it under running water or in a dishwasher.
- If you decide not to use the appliance any more, it must be rendered unusable by cutting off the power supply cord (first making sure that the plug has been removed from the power socket), and any parts which are hazardous if used as children's playthings must be rendered harmless.

Information for correct disposal of the product under the European Directive 2011/65/EU.

At the end of its lifetime, the product must not be disposed of with ordinary urban waste. It can be consigned to the special waste recycling centres provided by local government, or by the retailers who provide this service.

Proper disposal of a household appliance prevents possible detrimental effects on the environment or health arising from its incorrect disposal and allows the recovery of its constituent materials, generating major savings of energy and resources. The product bears the crossed-out symbol of a wheeled rubbish bin to indicate that it must be disposed of separately. Illegal dumping of the product by the user will be subject to prosecution under the relevant law.

GUARANTEE



This guarantee begins on the date of purchase of your appliance and covers all material and manufacturing defects during the legal length in use in the country of purchase of the appliance. Do not forget to keep your receipt in case of a claim under this warranty. No guarantee claims will be accepted for broken accessories, defects resulting from inappropriate use, excessive wear due to intensive use, wrong use due to the non-observance of the instruction manual, or failure to descale where appropriate or otherwise clean/maintain your item in line with the instructions and good practise. No guarantee claims will be accepted if the appliance has been modified or if some attempts have been made to repair the appliance. In such case, the vendor cannot be held responsible in case of accidents. In the event of claim, in the first instance, please contact your vendor who will inform you about their warranty procedure or send the appliance cleaned, well packed and with a short, easily readable description of the default as well as the receipt freight prepaid to the customer service.



Documents / Resources

	<p>bimar AP12, UFO-R1 IR WiFi Remote Control [pdf] Instruction Manual AP12 UFO-R1 IR WiFi Remote Control, AP12, UFO-R1, AP12 IR WiFi Remote Control, UFO-R1 IR WiFi Remote Control, IR WiFi Remote Control, IR WiFi RC, WiFi Remote Control, WiFi RC</p>
--	--

References

- [Site Under Construction](#)
- [Small Bimar appliances. Quality and Design.](#)

Manuals+.