



## BILT HARD TMA-0002 Walk Behind String Trimmer Instruction Manual

[Home](#) » [BILT HARD](#) » BILT HARD TMA-0002 Walk Behind String Trimmer Instruction Manual 

# **BILT HARD**

HAND PUSH LAWNMOWER  
SKU: TMA-0002



## Contents

- 1 TMA-0002 Walk Behind String Trimmer
- 2 Machine Parameter
- 3 SECTION 1: SLOPE GAUGE
- 4 SECTION2: IMPORTANT SAFE OPERATION PRACTICES
- 5 PARTS BAG FOR ASSEMBLE
- 6 SECTION 3: UNPACKING INSTRUCTIONS
- 7 SECTION 4: SET-UP INSTRUCTIONS
- 8 SECTION 5: CONTROLS
- 9 SECTION 6: OPERATION
- 10 How to achieve the lawn function
- 11 SECTION 7: MAINTENANCE
- 12 SECTION 8: LUBRICATION
- 13 SECTION 9: OFF-SEASON STORAGE
- 14 SECTION 10: TROUBLE SHOOTING GUIDE
- 15 DESCRIPTION FOR CJ21GTZS (CJ21GTZH) MODEL
- 16 LIMITED 30 DAY WARRANTY
- 17 Documents / Resources
  - 17.1 References
- 18 Related Posts

## TMA-0002 Walk Behind String Trimmer

**Note:** Please read the following instructions before use. This book contain important information on SAFETY, ASSEMBLY, OPERATION AND MAINTENANCE.

Please put the manual and the engine book let aside for your future reference!  
They illustrate important information about your mower!

Thank you for ordering our product. If you have any issue, please email it and your order ID to [inquiry@bilthardusa.com](mailto:inquiry@bilthardusa.com) or call (888) 680-2849

## Machine Parameter

Drive Type: Hand push  
Engine Brand: Rato RV170-S  
Engine Displacement: 170cc  
Engine Horse Power: 3.8HP  
Engine Max Power: 2.8kW/3600rpm  
Engine Max Torque: 8.8N.m/2500rpm  
Engine Oil Volume: 16.9 fl.oz  
Engine Fuel Volume: 27 fl.oz  
Blade Type: Straight Blade  
Cutting Height: 1.2-3.75 inch  
Height Adjustment: Central With 10 positions  
Cutting Width: 21 inch  
Catcher Type: Grass Bag & Side Discharge  
Deck Type: Steel Deck  
Wheel Diameter: Front 7", Rear 8"  
Grass Bag Volume: 17.17gal

## SECTION 1: SLOPE GAUGE

USE THIS PAGE AS A GUIDE TO DETERMINE SLOPES WHERE YOU MAY NOT OPERATE SAFELY.

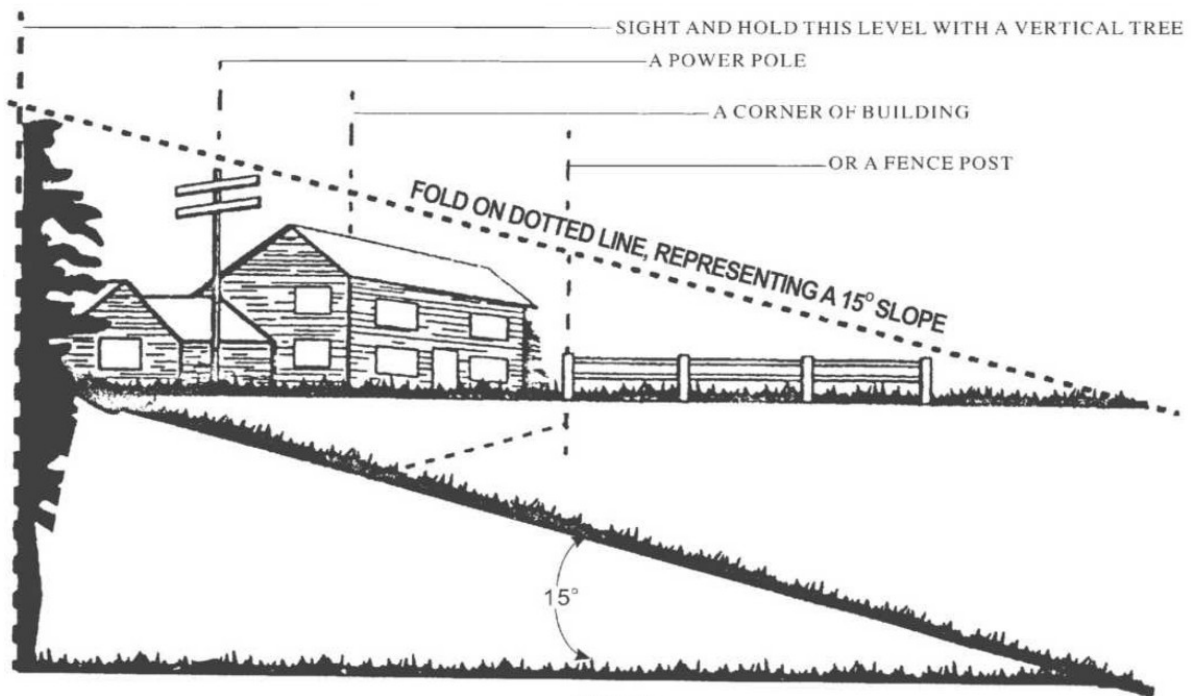


Figure 1

### **⚠ WARNING**

Do not on inclines with a slope in excess of degrees (a rise of approximately 2-1/2 feet every 10 feet). If operating a walk-behind mower on such a slope, it is extremely difficult to maintain your footing and you could slip, resulting in serious injury.

Operate WALK-BEHIND mowers across the face of slopes, never up and down slopes.

## **SECTION 2: IMPORTANT SAFE OPERATION PRACTICES**

**⚠ WARNING:** THIS SYMBOL POINTS OUT IMPORTANT SAFETY INSTRUCTIONS WHICH, IF NOT FOLLOWED, COULD ENDANGER THE PERSONAL SAFETY AND/OR PROPERTY OF YOURSELF AND OTHERS. READ AND FOLLOW ALL INSTRUCTIONS IN THIS MANUAL BEFORE ATTEMPTING TO OPERATE YOUR LAWN MOWER. FAILURE TO COMPLY WITH THESE INSTRUCTIONS MAY RESULT IN PERSONAL INJURY. WHEN YOU SEE THIS SYMBOL, HEED ITS WARNING.

**⚠ DANGER:** Your lawn mower was built to be operated according to the rules for safe operation in this manual. As with any type of power equipment, carelessness or error on the part of the operator can result in serious hands and feet and throwing objects. Could result in serious injury or death.

### **1. GENERAL OPERATION**

- Read this owner's guide carefully in its entirety before attempting to assemble this machine.

Read, understand, and follow all instructions on the machine and in the manuals before operation. Be completely familiar with the controls and the proper use of this machine before operating it. Keep this manual in a safe place for future and regular reference and for ordering replacement parts.

- Your rotary mower is a precision piece of power equipment, not a plaything. Therefore, exercise extreme caution at all times. Your unit has been designed to perform one job: to mow grass. Do not use it for any other purpose.
- Never allow children under 14 years old to operate a power mower. Children 14 years old and over should only operate mower under close parental supervision. Only responsible individuals who are familiar with these rules of safe operation should be allowed to use your mower.
- Keep the area of operation clear of all persons, particularly small children and pets. Stop engine when they are in the vicinity of your mower to help prevent blade contact or thrown object injury. Although the area of

operation should be completely cleared of foreign objects, an object may have been overlooked and could be accidentally thrown by the mower in any direction and cause serious personal injury to the operator or any others allowed in the area.

- Thoroughly inspect the area where the equipment is to be used. Remove all stones, sticks, wire, bones, toys and other foreign objects which could be picked up and thrown by the mower in any direction and cause serious personal injury to the operator or any others allowed in the area. Plan your mowing pattern to avoid discharge of material toward roads, sidewalks, bystanders and the like. To help avoid a thrown objects injury. Keep children, bystanders and helpers at least 75 feet from the mower while it is in operation.
  - Always wear safety glasses or safety goggles during operation or while performing an adjustment or repair, to protect eyes from foreign objects that may be thrown from the machine in any direction.
  - Wear sturdy, rough-soled work shoes and close-fitting slacks and shirts. Shirts and pants that cover the arms and legs and steel-toed shoes are recommended. Do not wear loose fitting clothes or jewelry. They can be caught in moving parts. Never operate feet, sandals, slippery or light weight (e.g. Canvas) shoes.
  - Do not put hands or feet near or under rotating parts. Keep clear of discharge opening at all times as the rotating blade can cause injury.
  - Many injuries occur as a result of the mower being pulled over the foot during a fall. Do not hang on to the mower if you are falling, release the handle immediately.
  - Never pull the mower toward you while you are walking. If you must back the mower away from a wall or obstruction first look down and behind, and then follow these steps:
    - Step back from the mower to fully extend your arms.
    - Be sure you are well balanced with sure footing.
    - Pull the mower back slowly, no more than half way toward you.
    - Repeat these steps as needed.
  - Do not operate the mower while under the influence of alcohol or drugs.
  - The blade control handle is a safety device. Never attempt to bypass its operation. Doing so makes the safety device inoperative and may result in personal injury through contact with the rotating blade. The blade control handle must operate easily in both directions and automatically return to the disengaged position when released.
  - Never operate the mower in wet grass. Always be sure of your footing. A slip and fall can cause serious personal injury. Keep a firm hold on the handle and walk, never run. If you feel you are losing your footing, RELEASE THE BLADECONTROL HANDLE IMMEDIATELY and the blade will stop rotating within three seconds.
  - Mow only in daylight or good artificial light.
- Stop the blade when crossing gravel drives, walks or roads.
- If the equipment should start to vibrate abnormally, stop the engine and check immediately for the cause. Vibration is generally a warning of trouble.
  - Shut the engine off and wait until the blade comes to a complete stop before removing the grass catcher or unclogging the chute. The cutting blade continues to rotate for a few seconds after the engine is shut off. Never place any part of the body in the blade area until you are sure the blade has stopped rotating.
  - Never operate mower without proper guards, grass catcher, plates or other safety protective devices in place.
  - Muffler and engine become hot and can cause a burn. Do not touch.
- Only use accessories approved for this machine by the manufacturer. Read, understand, and follow all instructions provided with the approved accessory.

- If situations occur which are not covered in this manual, use care and good judgment.

Contact your dealer for advice.

## 2. **SLOPE OPERATION**

For your safety, use the slope gauge included as part of this manual to measure slopes before operating this unit on a sloped or hilly area. If the slope is greater than 15 degrees as shown on the slope gauge, do not operate this unit on that area or serious injury could result.

DO:

- Mow across the face of slopes, never up and down. Exercise extreme caution when changing direction on slopes.
- Watch for holes, ruts, hidden objects, or bumps. Tall grass can hide obstacles.
- Always be sure of your footing. A slip and fall can cause serious personal injury. If you feel you are losing your balance, release the blade control handle immediately and the blade will stop in less than 3 seconds.

DO NOT:

- Do not mow near drop-offs, ditches or embankments. The operator could lose footing or balance.
- Do not mow slopes greater than 15 degrees as shown on the slope gauge.
- Do not mow on wet grass. Reduced footing could cause slipping.

## 3. **CHILDREN**

Tragic accidents can occur if the operator is not alert to the presence of children. Children are often attracted to the mower and the mowing activity. Never assume that children will remain where you last saw them.

- Keep children out of the mowing area and under the watchful care of a responsible adult other than the operator.
- Be alert and turn mower off if a child enters the area.
- Before and while moving backwards, look behind and down for small children or other objects.
- Never allow children under age 14 to operate the mower. Children 14 years of age and above should read and understand the operation instructions and safety rules in this manual.
- Use extreme care when approaching blind corners, shrubs, trees, or other objects that may obscure your vision of a child or hazard.

## 4. **SERVICE**

- Use extreme care in handling gasoline and other fuels. They are extremely flammable and the vapors are explosive.
- Use only an approved gasoline container.
- Never remove gas cap or add fuel while the engine is running. Allow engine to cool at least two minutes before refueling.
- Replace gasoline cap securely and wipe off any spilled gasoline before starting the engine as it may cause a fire or explosion.
- Extinguish all cigarettes, cigars, pipes and other sources of ignition.
- Never refuel machine indoors because flammable vapors will accumulate in the area.
- Never store the machine or fuel container inside where there is an open flame or spark such as a gas water heater, space heater, or furnace.
- Never turn an engine inside a closed area.
- To reduce fire hazard, keep mower free of grass, leaves, or other debris build-up. Clean up oil or fuel spillage. Allow mower to cool at least 5 minutes before storing.
- Before cleaning, repairing, or inspecting, make certain the blade and all moving parts have stopped. Disconnect the spark plug wire, and keep the wire away from the spark plug to prevent accidental starting.

- Check the blade and engine mounting bolts at frequent intervals for proper tightness. Also, visually inspect blade for damage (e.g., Bent, cracked or worn). Replace with blade which meets original equipment specifications listed in this manual.
- Keep all nuts, bolts, and screws tight to be sure the equipment is in safe working condition.
- Never tamper with safety devices. Check their proper operation regularly.
- After striking a foreign object, stop the engine, remove the wire from the spark plug, and thoroughly inspect the mower for any damage. Repair the damage before starting and operating the mower.
- Never attempt to make a wheel or cutting height adjustment while the engine is running.

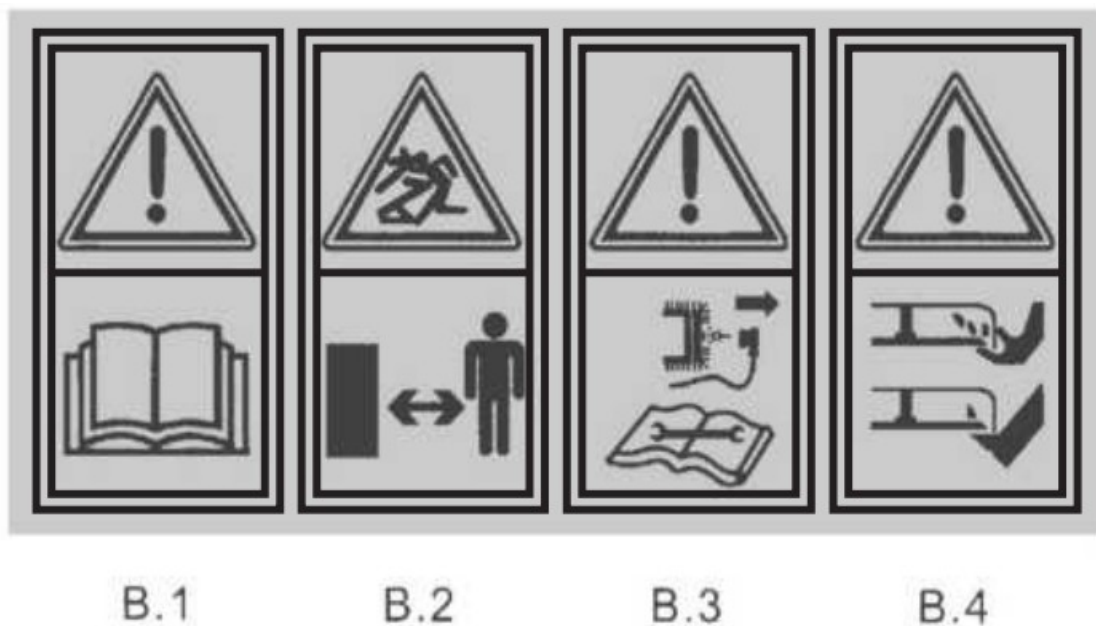
Grass catcher components are subject to wear, damage and deterioration, which could expose moving parts or allow objects to be thrown. For safety protection, frequently check components and replace with manufacturer's recommended parts, when necessary

Mower blades are sharp and can cut. Wrap the blade(s) or wear gloves, and use extra caution when servicing them.

Do not change the engine governor setting or overspeed the engine. Excessive engine speeds are dangerous. Do not adjust the throttle with the engine running

**⚠ WARNING:** The engine exhaust from this product contains chemicals known to the state of California to cause cancer, birth defects or other reproductive harm.

**⚠ WARNING-YOUR RESPONSIBILITY:** Restrict the use of this power machine to persons who read, understand and follow the warnings and instructions in this manual and on the machine



**⚠ WARNING:**

B.1 Read Operator's Manual

B.2 Keep Bystanders Away

B.3 When repairing, please pick up the spark plug, then repair it according to the Operational Manual

B.4 Pay more attention to the operator's hands and feet to avoid being injured



Figure 2 Safety Label Found On Lawn Mower

## PARTS BAG FOR ASSEMBLE

Package Contents & assembly:

Package Contents:

Part 3 : M8\*15 Bolt\*4

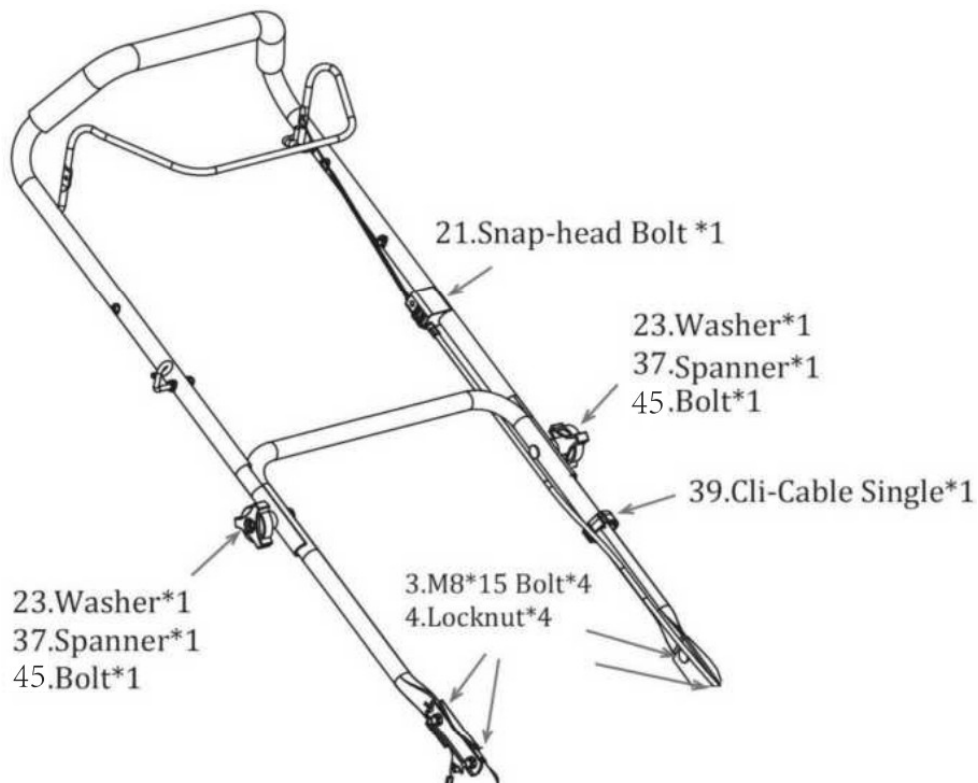
Part 21 : Snap-head Bolt\*1 Part 37 : Spanner\*2

Part 45 : Bolt\*2

Part 4: Locknut\*4

Part 23 :Washer\*2

Part 39 :Cli-Cable Single\*1



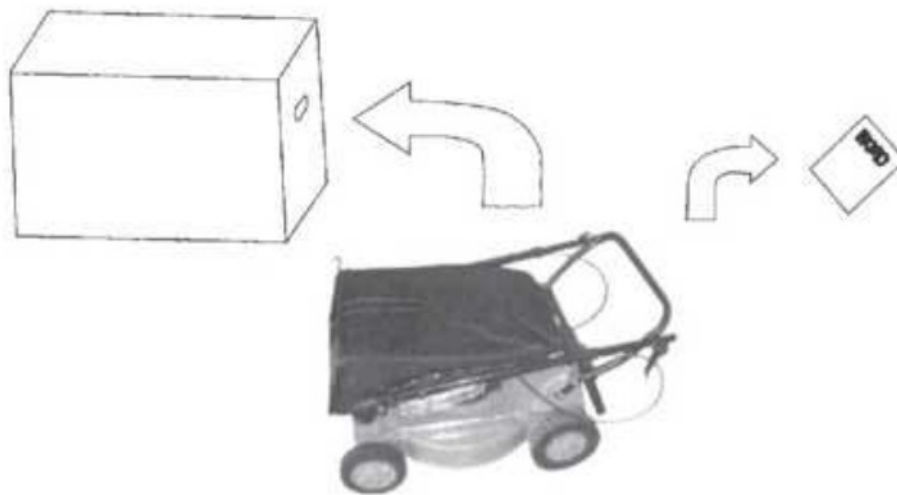
**Note:** You need to assemble the parts in the parts package with the machine, and all the serial numbers correspond to the serial numbers in the DESCRIPTION.

## SECTION 3: UNPACKING INSTRUCTIONS

### REMOVE UNIT FROM CARTON

(See Figure 3)

- Remove staples, break glue on top flaps. or cut tape at carton end and peel along top flap to open carton.
- Remove loose parts if included with unit (i.e.,owner's manual, etc.).
- Cut along dotted lines and lay carton down flat.
- Remove packing material.
- Roll or slide unit out of carton. Check carton thoroughly for loose parts.



Mower with bag catcher

Figure 3

## SECTION 4: SET-UP INSTRUCTIONS

### ITEMS REQUIRED FOR ASSEMBLY

- Pair of Pliers (Not necessary. but helpful)
- Motor Oil
- Fresh Gasoline

**IMPORTANT:** This unit is shipped WITHOUT GASOLINE or OIL in the engine. Be certain to service engine with gasoline and oil as instructed in the scparate engine manual before operating your mower.

**NOTE:** Reference to right or left hand side of the mower is observed from the operating position.

### SET UP YOUR LAWN MOWER

Follow steps 1 through 4 to set up your lawn mower.

LAWNMOWER WITH GRASS BAG CATHER.

**Step 1:** Remove the grass bag from the unit.





Step2: Unfold the upper handle. press the spanner to fix the upper handle and lower handle together as illustration in the pic.



Step3: Lift the rear flap, fix the hook grass box to the grass bag to the flap's axle to make the bag and the unit together.



## SECTION 5: CONTROLS

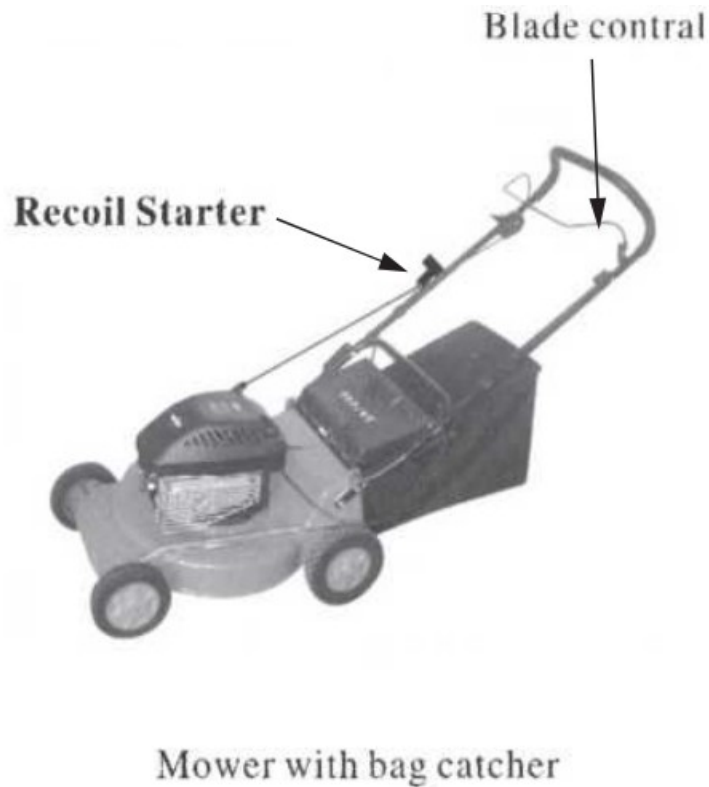


Figure 5

#### **RECOIL STARTER**

The recoil starter handle is attached to the upper handle. See Figure 6. Stand behind the unit in the operating position to start the unit.

#### **CUTTING HEIGHT ADJUSTMENT LEVER.**

The Cutting height adjustment lever is used to adjust the distance of blade from grass—ground.

**NOTE:** Your mower is shipped with the cutting height in the lowest position. Adjust the cutting height as follows. The cutting height adjustment levers are located above the four wheels. To adjust the cutting height, pull the lever out and away from the mower and then move it forward or backward to select a new cutting height. See Figure 7.

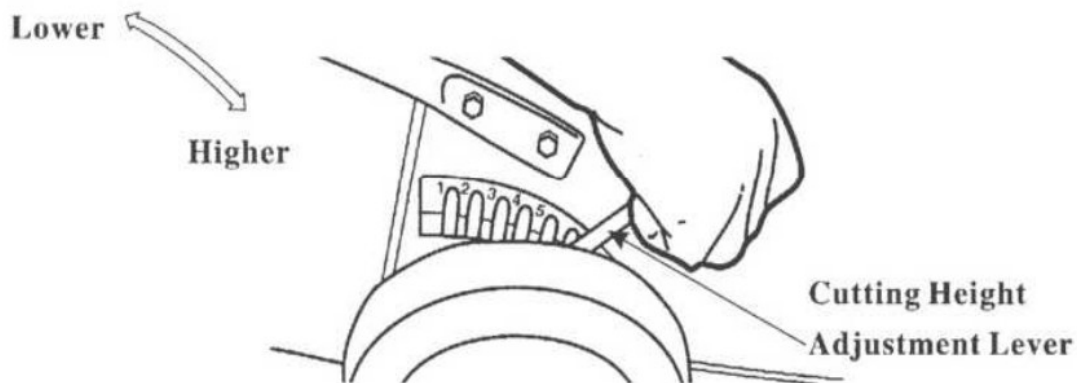


Figure 6

**NOTE:** For rough or uneven lawns, move the height adjustment lever to a higher position. This will help stop scalping.

## **SECTION 6: OPERATION**


**⚠ WARNING:** Keep hands and feet away from the chute area on the cutting deck. See A Figure 2. The operation of any lawn mower can result in foreign objects being thrown into the eyes, which can result in severe eye

damage. Always wear safety glasses or eye shields.

**NOTE:** For best results raise the cutting position until it is determined which height is best for your lawn. See CUTTING HEIGHT ADJUSTMENT LEVER in the CONTROLS section.

### **GAS AND OIL FILL-UP**

Service the engine with gasoline and oil as instructed in the separate engine manual. Read all instructions carefully.

 **WARNING:** Never fill fuel tank indoors with engine running or until the engine has been allowed to cool for at least two minutes after running.

### **EACH TIME YOU START YOUR MOWER ALL UNITS:**

Attach spark plug wire to spark plug. Make certain the metal cap on the end of the spark plug wire is fastened securely over the metal tip on the spark plug.

### **TO START ENGINE AND ENGAGE BLADE**

Move the throttle control on the engine to the fast (rabbit) position.


Prime engine as instructed in the separate engine manual.

Stand behind the unit. Squeeze the blade control handle and hold it against the upper handle.

**NOTE:** If any problems are encountered, refer to the TROUBLE SHOOTING section of this manual.

### **TO STOP ENGINE AND BLADE**

Release the blade control handle to stop the engine and the blade.

 **WARNING:** The blade continues to rotate for a few seconds after the engine is shut off.


### **USING YOUR ROTARY MOWER**

Be sure that the lawn is clear of stones, sticks, wire, or other objects which could damage the lawn mower or the engine. Such objects could be accidentally thrown by the mower in any direction and cause serious personal injury to the operator and others.

For best results, do not cut wet grass because it tends to stick to the underside of the mower, preventing proper discharge of grass clippings, and could cause you to slip and fall. New grass, thick grass or wet grass may require a narrower cut.

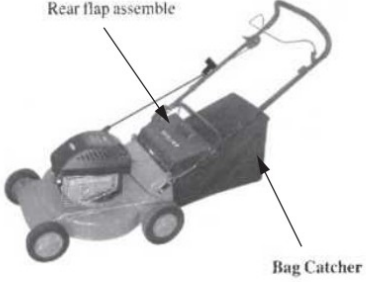
For a healthier lawn, never cut off more than one-third of the total length of the grass. Your lawn should be cut in the fall as long as there is growth.

This mower is designed to be operated at full throttle to give you the best cut and do the most effective job of mowing or mulching.

 **WARNING:** If you strike a foreign object, stop the engine. Remove wire from the spark plug, thoroughly inspect the mower for any damage, and repair the damage before restarting and operating the mower. Extensive vibration of the mower during operation is an indication of damage. The unit should be promptly inspected and repaired.

### **BAGGING GRASS CLIPPINGS**

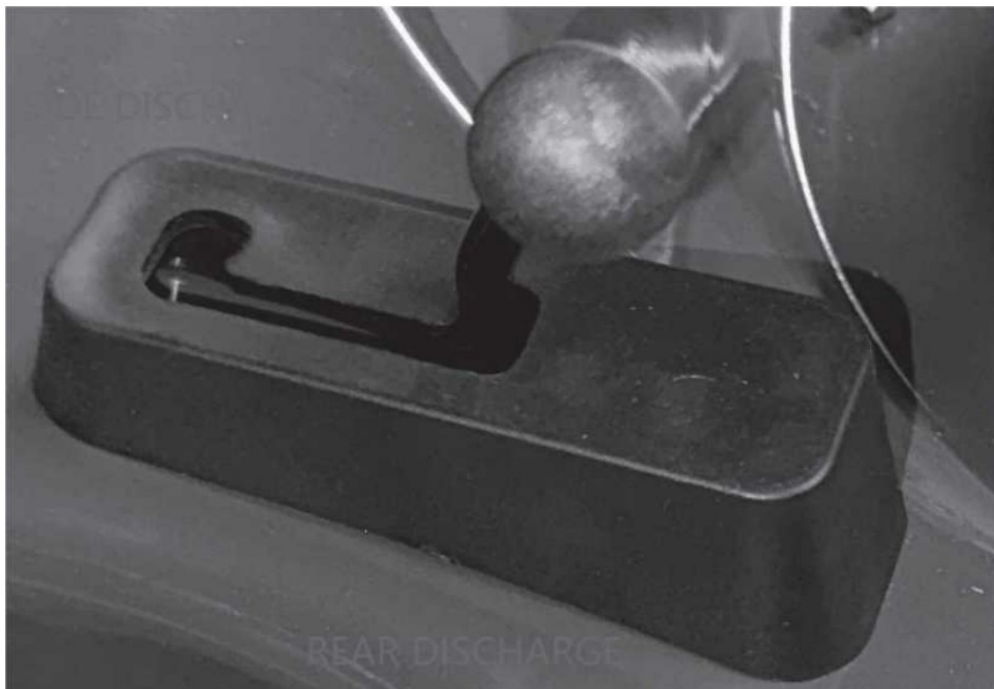
This mower can bag grass clippings. Follow steps 1 and steps 2 to ready the mower for bagging.

Step1.Lift chute door.	<p>Step2.Slide box onto adapter.</p>  <p>Mower with bag catcher</p>
	Figure 7

## How to achieve the lawn function

**Note:** The control have two position as the picture,So you need to adjust it when choose different discharge functions:

1. You need to adjust the handle position to “Side” and load the side discharge guide when you want to use the side discharge function.
2. You need to adjust the handle position to “Rear” and load the grass bag when you want to use the rear collection function.

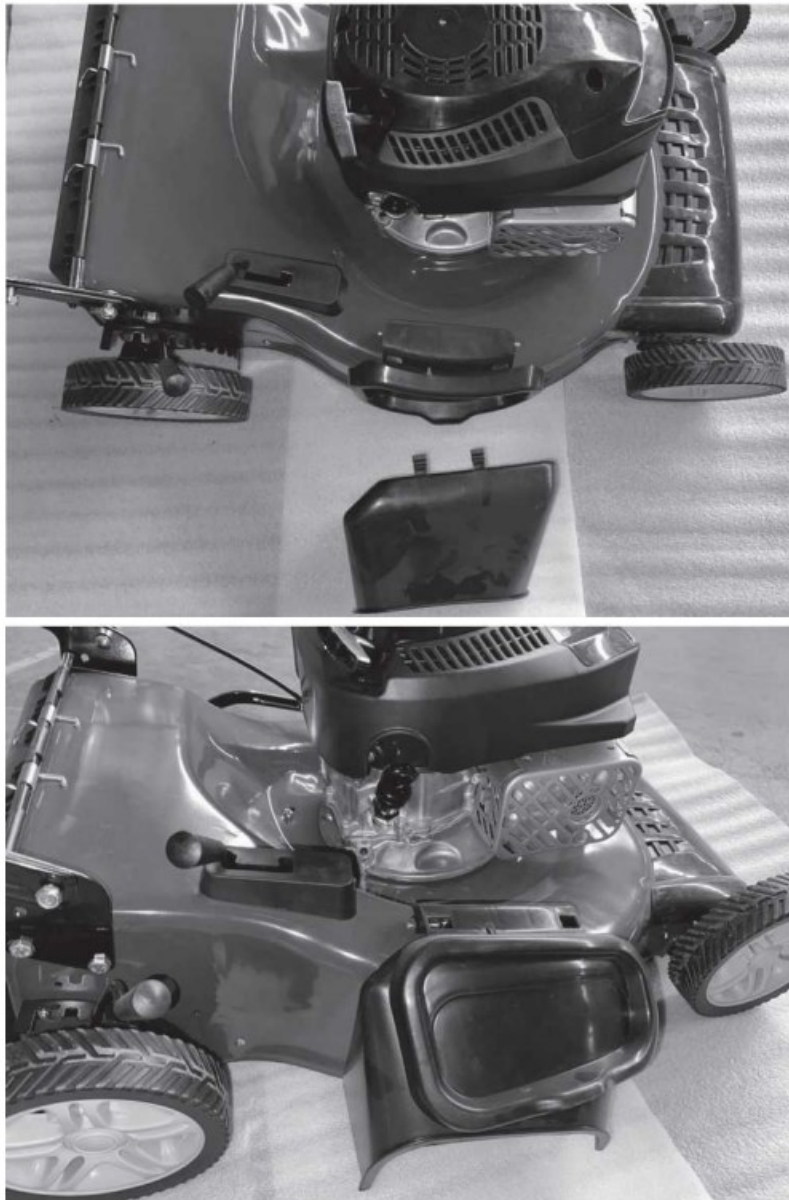


1. Rear bag discharge



Adjust the handle control to the Rear Discharge position then load the grassbag and can not load the side discharge guide as the picture.

## 2. Side discharge



Adjust the handle control to the Side Discharge Position as pictures and load the discharge guide.

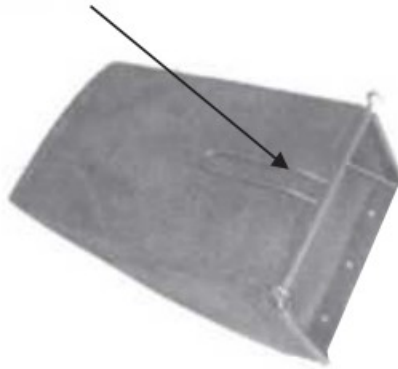
### **EMPTYING YOUR GRASS CATCHER**

Holding the grass catcher by both the rear handle and the lower handle, lift it straight up. The chute door will move the rope out of the way of the box. Remove the box from the bagging adaptor on the mower. While holding the lower handle lift up the rear section of the grass catcher as shown in Figure 9.

The box will open and the grass clippings will fall out. See Figure 8. When replacing your grass catcher be sure the top of the box rests on the wire support between the handles.



**Hands Tote**



**Bag Catcher**

Figure 8

## SECTION 7: MAINTENANCE

**⚠ WARNING:** Be sure to disconnect and ground the spark plug wire before performing any A repairs or maintenance.

**NOTE:** When tipping the unit, empty the fuel tank and keep the engine spark plug side up. Never tip the mower more than 90 degrees and do not leave the mower tipped for any length of time. Oil can drain into the upper part of the engine causing a starting problem.

### ENGINE

Refer to the separate engine manual for all engine maintenance instructions.

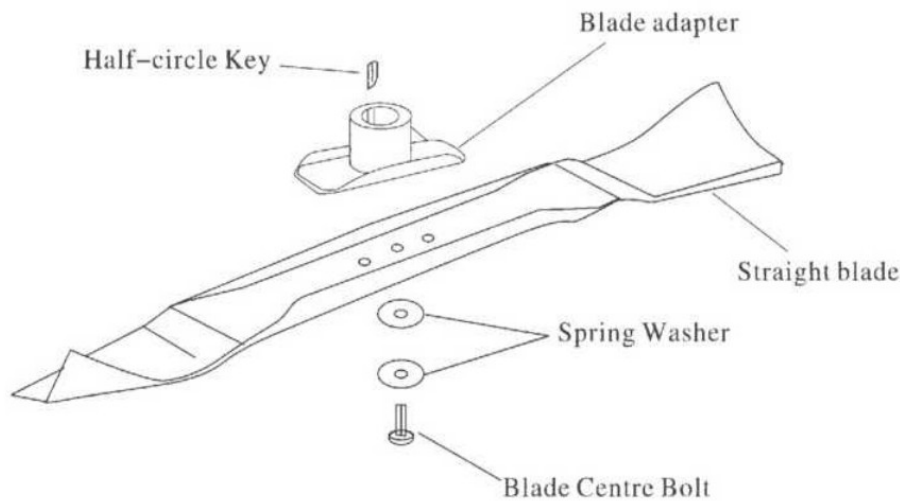
- Maintain engine oil as instructed in the separate engine manual packed with your unit. Read and follow instructions carefully.
- Service air cleaner every 25 hours under normal conditions. Clean every few hours under extremely dusty conditions. Poor engine performance and flooding usually indicate that the air cleaner should be serviced. To service the air cleaner, refer to the separate engine manual packed with your unit.
- The spark plug should be cleaned and the gap reset once a season. Spark plug replacement is recommended at the start of each mowing season, check engine manual for correct plug type and gap specifications.
- Clean the engine regularly with a cloth or brush. Keep the cooling system (blower housing area) clean to permit proper air circulation which is essential to engine performance and life. Be certain to remove all grass, dirt and combustible debris from muffler area.

### DECK

The underside of the mower deck should be cleaned after each use to prevent a buildup of grass clippings. Leaves, dirt or other matter. If this debris is allowed to accumulate, it will invite rust and corrosion, and may prevent proper mulching, discharge or bagging.

The deck may be cleaned by tilting the mower and scraping clean with a suitable tool (make certain the spark plug wire is disconnected).

## CUTTING BLADE REMOVAL, REPLACEMENT AND SHARPENING THREE MODEL OF BLADE



- When removing the cutting blade for sharpening or replacement, protect your hands with a pair of heavy gloves or use a heavy rag to hold the blade.
- Remove the bolt and the washer that hold the blade and the blade adapter to the engine crankshaft.
- Remove the blade and the adapter from the crankshaft.

**⚠ WARNING:** Periodically inspect the blade adapter for cracks, especially if you strike a foreign object. Replace when necessary.

When sharpening the blade, follow the original angle of grind as guide. It is extremely important that each cutting edge receives an equal amount of grinding to prevent an unbalanced blade. An unbalanced blade will cause excessive vibration when rotating at high speeds. It may cause damage to the mower and could break causing personal injury.

The blade can be tested by balancing it on a round shaft screwdriver. Remove metal from the heavy side until it balances evenly. It is recommended that the blade always be removed from the adapter when testing for balance. Before reinstalling the blade and the blade adapter to the unit, lubricate the engine crankshaft and the inner surface of the blade adapter with light oil.

- Be sure to install the blade with the side of the blade marked with part number facing the ground when the mower is in the operating position.
- Slide the blade adapter on to the engine crankshaft.
- Place the blade on the adapter. Be certain the blade is aligned with and seated on the blade adapter flanges.
- Place washer on blade. Make sure the notches on the blade bell support are aligned with the small holes in the blade.
- Replace hex bolt.
- Tighten hex bolt to torque: 45-50 Nm(33-36 ft.1b).
- Three disc bolts: 9-1 INm(6.6-8 ft.1b)
- Tip mounting bolt: 20-25Nm(15~18 ft.1b)

**NOTE:** To ensure safe operation of your mower, the blade bolt must be checked periodically for correct torque.

## SECTION 8: LUBRICATION

**⚠ WARNING:** Always stop engine and disconnect spark plug wire before cleaning. A lubricating or doing any kind of service work on the lawn mower.



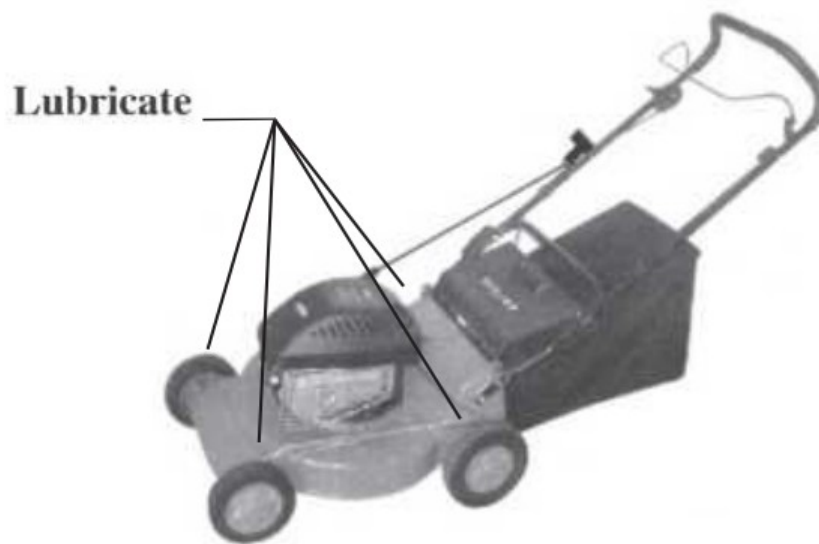


Figure 10

**Wheels:** Lubricate the wheels at least once a season with light oil (or engine oil). Also, if the wheels are removed for any reason, lubricate the surface of the axle bolt and the inner surface of the wheel with light oil. See Figure 11.

**Engine:** Follow engine manual for lubrication instructions.

## SECTION 9: OFF-SEASON STORAGE

The following steps should be taken to prepare your lawn mower for storage. Clean and lubricate mower thoroughly as described in the lubrication instructions. Refer to engine manual for correct engine storage instructions.

Coat mower's cutting blade with chassis grease to prevent rusting.

Store mower in a dry, clean area. Do not store next to corrosive materials, such as fertilizer.

**NOTE:** When storing any type of power equipment in a poorly ventilated or metal storage shed, care should be taken to rust—proof the equipment. Using a light oil silicone, coat the equipment, especially cables and all moving parts.

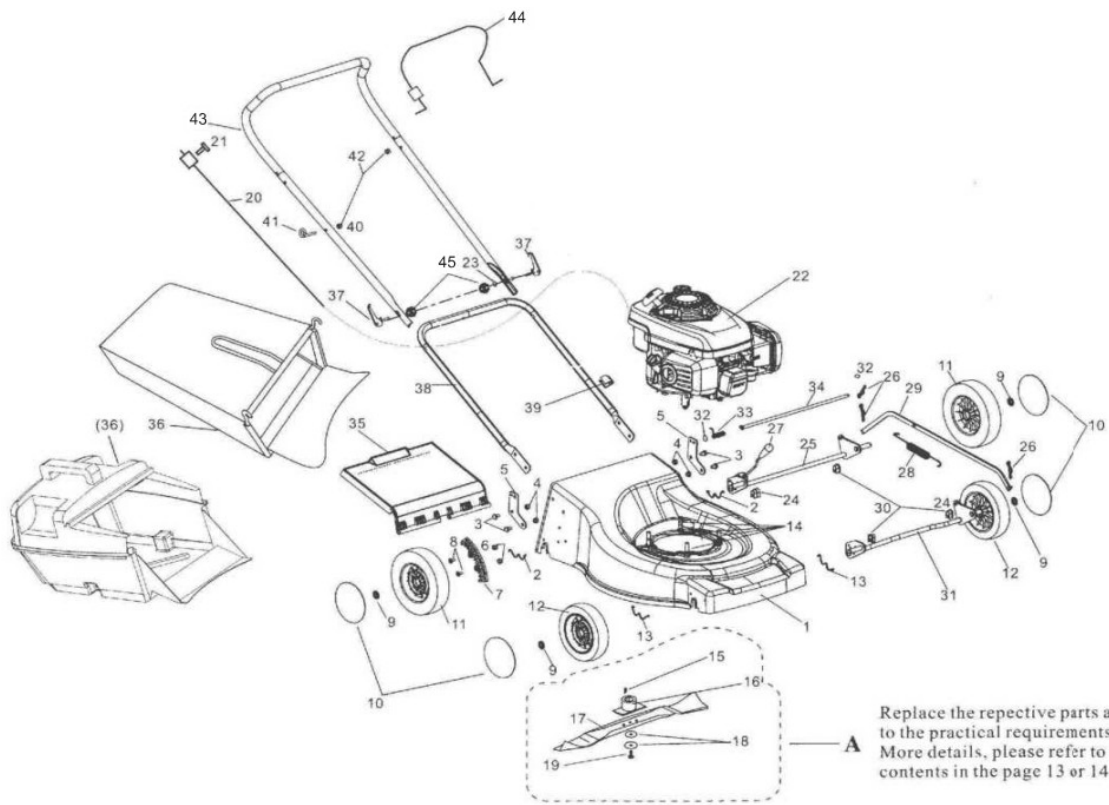
## SECTION 10: TROUBLE SHOOTING GUIDE

Trouble	Possible Cause(s)	Corrective Action
Engine fails to start	Blade control handle disengaged. Spark plug wire disconnected. Throttle control lever not in correct starting position. Fuel tank empty or stale fuel. Blocked fuel line. Faulty spark plug. Engine flooded.	Engage blade control handle. Connect wire to spark plug. Move throttle lever to FAST or START position. Fill tank with clean, fresh gasoline. Clean fuel line. Clean, adjust gap or replace. Crank engine with throttle in FAST position.
Engine runs erratic	Unit running in START position. Spark plug wire loose. Blocked fuel line or stale fuel. Vent in gas cap plugged. Water or dirt in fuel system. Dirty air cleaner. Carburetor out of adjustment.	Move throttle lever to FAST position. Connect and tighten spark plug wire. Clean fuel line: fill tank with clean, fresh gasoline. Clean vent. Drain fuel tank. Refill with fresh fuel. Clean air cleaner. Adjust carburetor.
Engine overheats	Engine oil level low. Air flow restricted. Carburetor not adjusted properly.	Fill crankcase with proper oil. Remove blower housing and clean. Adjust carburetor.
Occasional skip (hesitates) at high speed	Spark plug gap too close.	Adjust gap to .030".
Idles poorly	Spark plug fouled, faulty or gap too wide. Carburetor improperly adjusted. Dirty air cleaner.	Reset gap to .030" or replace spark plug. Adjust carburetor. Clean air cleaner.
Excessive vibration	Cutting blade loose or unbalanced. Bent cutting blade.	Tighten blade and adapter. Balance blade. Replace blade.
Mower will not mulch grass	Engine speed too low. Wet grass. Excessively high grass. Dull blade.	Set throttle between 3/4 and full throttle. Do not mow when grass is wet, wait until later to cut. Mow once at a high cutting height, then mow again at desired height or make a narrower cutting swath (1 / 2 width). Sharpen or replace blade.
Uneven cut	Wheels not positioned correctly. Dull blade.	Place all four wheels in same height position. Sharpen or replace blade.

Refer to separate engine manual packed with your mower for more engine related information

**NOTE:** For repairs beyond the minor adjustments listed above, contact your nearest authorized service dealer.

## DESCRIPTION FOR CJ21GTZS (CJ21GTZH) MODEL



Replace the repective parts according to the practical requirements, More details, please refer to the contents in the page 13 or 14.

Key No.	DESCRIPTION	Key No.	DESCRIPTION
1	Housing Assemble 21"	24	The Plastic Bush of the FrontAxle
2	Fixing Axle Spring W	25	Rear Axle Assemble 21
3	Bolt M8x 15	26	Bumper pin
4	Locknut of the Nylon M8	27	Handgrip
5	Bracket-Flap	28	21 Spring of the Pole
6	Locknut of the Nylon M5	29	21 Pole of the Height Adjustment Assy
7	Height Adjust (B)	30	The Plastic Bush of the FrontAxle
8	Snap-head Bolt M5X20	31	Front Axle Assemble 21"
9	the Push Ring	32	Lock Circle
10	Deck of Wheel	33	Spring of the Rear Flap
11	VWheel &TheAssemble8" (Bearing)	34	Axle of the Rear Flap
12	VWheel &TireAssemble 7" (Bearing)	35	Rear Flap Assemble
13	Fixing Axle Spring A	36	Grass catcher Assemble 21
14	Fixing Engine Bolt	37	Spanner Assemble
15	Half-circle Key	38	Lower of Handle 21
16	4)25 Blade Cover	39	CLI-CABLE SINGLE
17	21 Straight Blade	40	Locknut of the Nylon 1/4
18	Spring Washer	41	Guide-rope
19	Hex bolt 3/8"	42	Locknut of the Nylon M6
20	Throttle Controlling	43	Upper Handle (B)
21	Snap-head Bolt M6X30	44	LEVER-STOP
22	Engine	45	Bolt
23	Washer		

## LIMITED 30 DAY WARRANTY

BILT HARD makes every effort to assure that its products meet high quality and durability standards, and warrants to the original purchaser that this product is free from defects in materials and workmanship for the period of 30 days from the date of purchase.

This warranty does not apply to damage due directly or indirectly, to misuse, abuse, negligence or accidents, repairs or alterations outside our facilities, criminal activity, improper installation, normal wear and tear, or to lack of maintenance.

We shall in no event be liable for death, injuries to persons or property, or for incidental, contingent, special or consequential damages arising from the use of our product. Some states do not allow the exclusion or limitation of incidental or consequential damages, so the above limitation of exclusion may not apply to you. This warranty is expressly in lieu of all other warranties, express or implied, including the warranties of merchantability and fitness. To take advantage of this warranty, the product or part must be returned to us. Proof of purchase date and an explanation of the complaint must accompany the merchandise. If our inspection verifies the defect, we will either repair or replace the product at our election or we may elect to refund the purchase price if we cannot

readily and quickly provide you with a replacement. We will return repaired products at our expense, but if we determine there is no defect, or that the defect resulted from causes not within the scope of our warranty, then you must bear the cost of returning the product. This warranty gives you specific legal rights and you may also have other rights which vary from state to state.

**BILT HARD**


Using tips:

Video on YouTube



<https://www.youtube.com/channel/UCKjPFKSyQgfVg6kNQR2HeCQ/videos>

Documents / Resources



[BILT HARD TMA-0002 Walk Behind String Trimmer](#) [pdf] Instruction Manual  
TMA-0002 Walk Behind String Trimmer, TMA-0002, Walk Behind String Trimmer, Behind String Trimmer, String Trimmer, Trimmer

References

- [User Manual](#)

[Manuals+](#), [Privacy Policy](#)

This website is an independent publication and is neither affiliated with nor endorsed by any of the trademark owners. The "Bluetooth®" word mark and logos are registered trademarks owned by Bluetooth SIG, Inc. The "Wi-Fi®" word mark and logos are registered trademarks owned by the Wi-Fi Alliance. Any use of these marks on this website does not imply any affiliation with or endorsement.