



# BIGXI AX1800 Wireless Router Installation Guide

[Home](#) » [BIGXI](#) » BIGXI AX1800 Wireless Router Installation Guide 

## BIGXI

### Contents

- [1 BIGXI AX1800 Wireless Router](#)
- [2 Connect the Router](#)
- [3 Initial Setup](#)
- [4 FAQ](#)
- [5 Where to Find More Help](#)
- [6 FCC](#)
- [7 Documents / Resources](#)

## BIGXI AX1800 Wireless Router

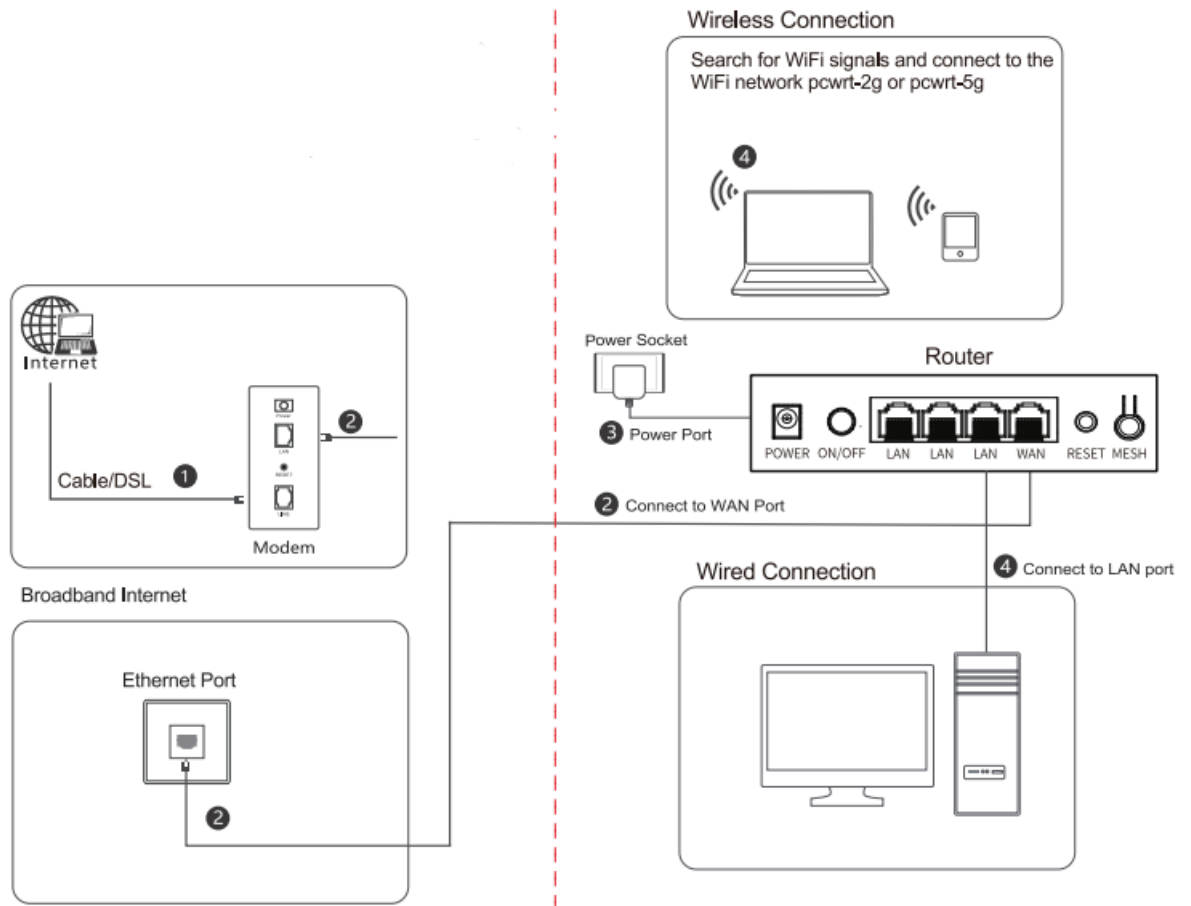


### Connect the Router

1. If replacing an existing router, disconnect it. Keep the modem connected.
2. Connect the Internet cable from your modem to the WAN port on the pcWRT router (the 4th port counting from

the left).

3. Connect the power adapter. Push the ON/OFF button to power on the router.
4. Connect a computer to the pcWRT router, either by WiFi or by Ethernet



## Initial Setup

On the device connected to the pcWRT router, open a browser and enter <http://192.168.10.1>. Follow the steps below to do initial setup.

Choose a router admin password. This is the password you'll use to log in the router after Initial Setup. Click Next.



Router Password	Timezone	Wifi SSID & Password	Email
-----------------	----------	----------------------	-------

You are configuring the router for the first time. Please set a password. You will need to enter this password in the future in order to manage this router.

Password

Confirm Password

Next

Choose your timezone, click Next.



Router Password	Timezone	Wifi SSID & Password	Email
-----------------	----------	----------------------	-------

- ☐ Choose from all timezones
- ☒ Choose from timezones with the same UTC offset as browser

Back Next

Set a password for the 2.4GHz WiFi, click Next. Repeat it for the 5GHz WiFi. This is the password to use to connect to the WiFi. Click Next.

**Hint:** You can click on the magnifier icon on the right of the WiFi Password field to reveal the password.



Router Password	Timezone	<b>Wifi SSID &amp; Password</b>	Email
-----------------	----------	---------------------------------	-------

2.4 GHz

5.0 GHz

---

SSID

pcwrt-2g

Disable

Encryption

WPA2-PSK

Cipher

CCMP (AES) - Recommended

WiFi Password

.....

Back

Next

Click Finish to complete Initial Setup.



Router Password	Timezone	Wifi SSID & Password	<b>Email</b>
-----------------	----------	----------------------	--------------

Please enter your email address below. Notifications will be sent to this email address when new firmware updates become available.

You can omit this field if you don't want to receive email notifications. If you omit it now, you can add it later in the System Settings page after the router has been set up.

Email

Back

Finish

## FAQ

### Why I can't access the router at <http://1192.168.10.1>?

Please check that your computer is connected to the pcWRT router. If you connect by WiFi, check that your computer is connected to the pcWRT WiFi network. If you have changed the LAN IP address on the router, you need to use your new LAN IP address instead.

### What can I do if I forgot my WiFi password?

You need to connect to the router by wire to one of the LAN ports on the router. Log in with your router

management password. Go to the Wireless Settings page. Click on the magnifier icon on the WiFi Password field to reveal the WiFi password.

### What can I do if I forgot my router password?

Normally you'll need to reset the router. However, you can enable password reset by email on the System Settings page.

## Notifications

- ☐ Notify me when firmware update is available
- ☒ Allow router password reset on login page
- ☐ Notify me when router settings are changed
- ☐ Override router Reset button. Send notification when router Reset button is pressed

### Email Address

my@email.address

Save

### How can I reset the router?

While the router is powered on, press and hold the RESET button with a pin or pen tip for about 10 seconds, then release. The router will reboot and restore to factory defaults. Do not power off the router during the process.

### Warning

1. Please use a surge protector to protect the router from damage by lightening/thunderstorms.
2. Keep away from heat sources and ensure good ventilation.
3. Avoid contact with water or moisture.
4. Use the power adapter that comes with the router.
5. Place the router on a stable surface.

### Where to Find More Help

Scan the QR code below for instructions on specific tasks (Access Control, VLAN, VPN, Ad block etc.) URL:

<https://www.pcNrt.com/support/>



Please send email to our support in box if you need help with specific issues: [support@pcwrt.com](mailto:support@pcwrt.com)

You can also post your question in our on line forums and search for answers there:

## FCC

### FCC ID: 2BB6K-AX1800

#### FCC WARNING

This device complies with part 15 of the FCC Rules. Operation is subject to the following two conditions:

1. this device may not cause harmful interference, and
2. this device must accept any interference received, including interference that may cause undesired operation.

Any changes or modifications not expressly approved by the party responsible for compliance could void the user's authority to operate the equipment.

**NOTE:** This equipment has been tested and found to comply with the limits for a Class B digital device, pursuant to Part 15 of the FCC Rules. These limits are designed to provide reasonable protection against harmful interference in a residential installation. This equipment generates, uses and can radiate radio frequency energy and, if not installed and used in accordance with the instructions, may cause harmful interference to radio communications. However, there is no guarantee that interference will not occur in a particular installation. If this equipment does cause harmful interference to radio or television reception, which can be determined by turning the equipment off and on, the user is encouraged to try to correct the interference by one or more of the following measures:

- Reorient or relocate the receiving antenna.
- Increase the separation between the equipment and receiver.
- connect the equipment into an outlet on a circuit different from that to which the receiver is connected.
- consult the dealer or an experienced radio technician for help.


To maintain compliance with FCC's RF Exposure guidelines, this equipment should be installed and operated with a minimum distance of 20cm between the radiator and your body. This equipment must not be co-located or operating in conjunction with any other antenna or transmitter.

The use of the 5150 – 5250 MHz band is restricted to indoor use only. This restriction will be applied in all member states.

©2023 bigXi LLC

---

## Documents / Resources

	<a href="#">BIGXI AX1800 Wireless Router</a> [pdf] Installation Guide 2BB6K-AX1800, 2BB6KAX1800, ax1800, AX1800 Wireless Router, Wireless Router, Router
---	---