




[Home](#) » [Bigway](#) » **Bigway GTHDWL50D Wireless HDMI Transmitter and Receiver Instruction Manual** 

Contents [[hide](#)]

- [1 Bigway GTHDWL50D Wireless HDMI Transmitter and Receiver](#)
- [2 Specifications](#)
- [3 OVERVIEW](#)
- [4 PRODUCT FUNCTIONS](#)
- [5 Indicator Light Description](#)
- [6 Supports many-to-one mode](#)
- [7 Wireless Transmitter Pairing Method](#)
- [8 FCC](#)
- [9 FAQs](#)
- [10 Documents / Resources](#)
 - [10.1 References](#)

Bigway

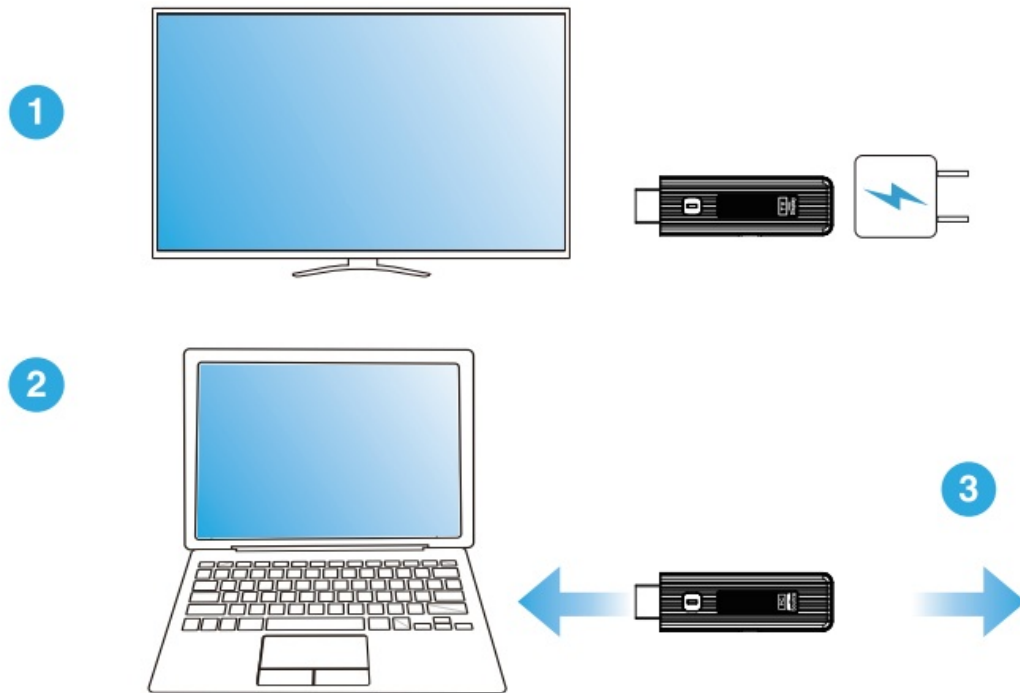
Bigway GTHDWL50D Wireless HDMI Transmitter and Receiver



Specifications

- **Model:** XYZ-2000
- **Dimensions:** 10 x 5 x 3 inches
- **Weight:** 2 lbs
- **Power:** 120V AC
- **Capacity:** 1.5 liters

OVERVIEW



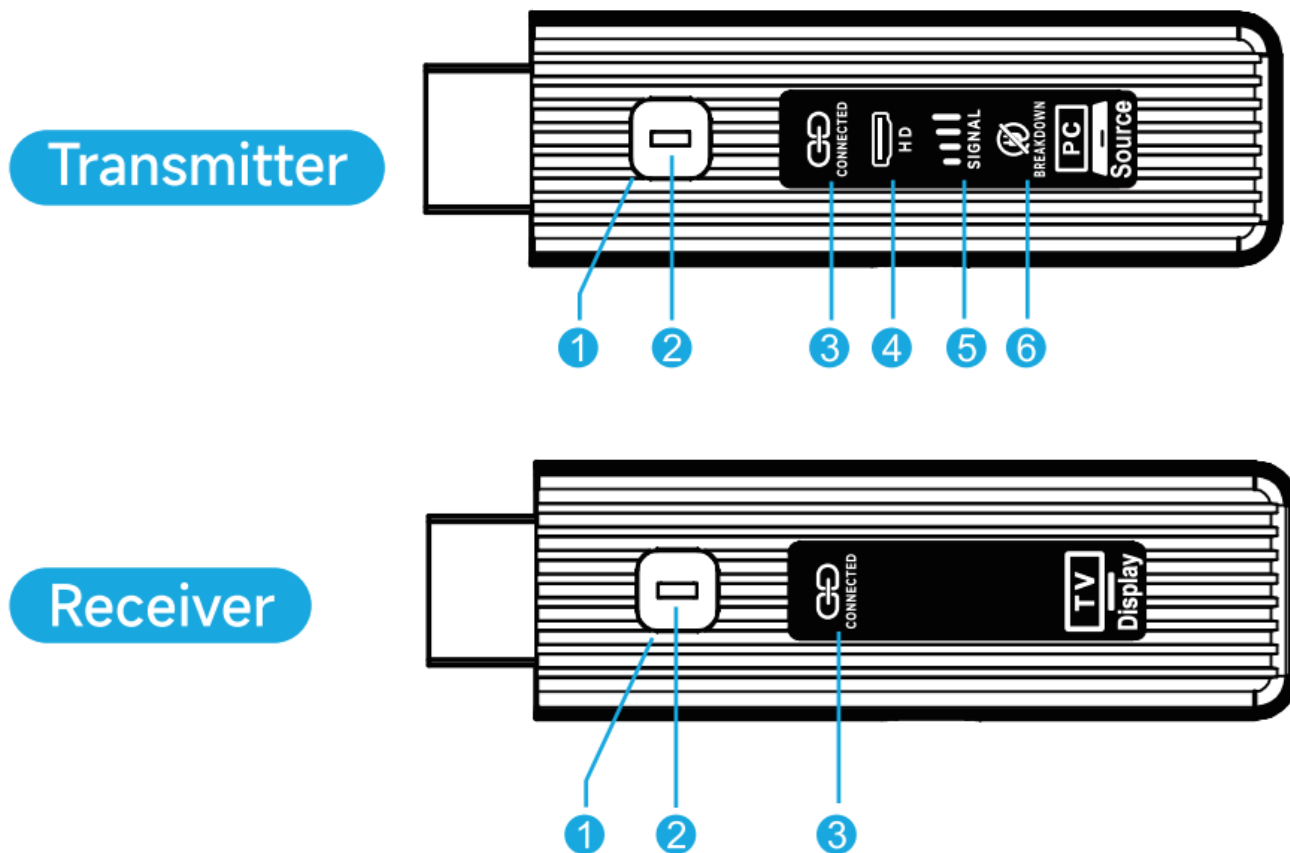
Installation procedure:

1. Connect the HDMI and USB ports of the receiver of the wireless transmitter to the display device such as the TV or projector.
2. Connect the HDMI and USB ports of the transmitter of the wireless transmitter to the display device such as laptops, desktops, set-top box cameras, and camcorders.
3. After the connection is complete, the blue light of the transmitter will blink first, and becomes steady. When the connection is successful, the screen will show the video.
4. Normally, the transmitter does not require external power supply. If the transmitter fault light flashes (the HDMI power supply of the signal source may be insufficient), you need to connect the external power supply to the Type C port.

Note:

1. Equipment operating temperature: About 50 degrees ,but it is normal temperature which does not affect the use.
2. The device has been paired before leaving the factory, and the user does not need to re-pair.
3. The light at the receiving end will only be on,only as power indication.
4. If the pairing indicator light keeps flashing slowly after connecting the Type C power cable, it needs to be re-paired. Please refer to the following content for the pairing

PRODUCT FUNCTIONS



1. Pairing Key
2. Power Indicator Light
3. Pairing Indicator Light
4. HDMI Status Light
5. Signal Strength Light
6. Fault Light

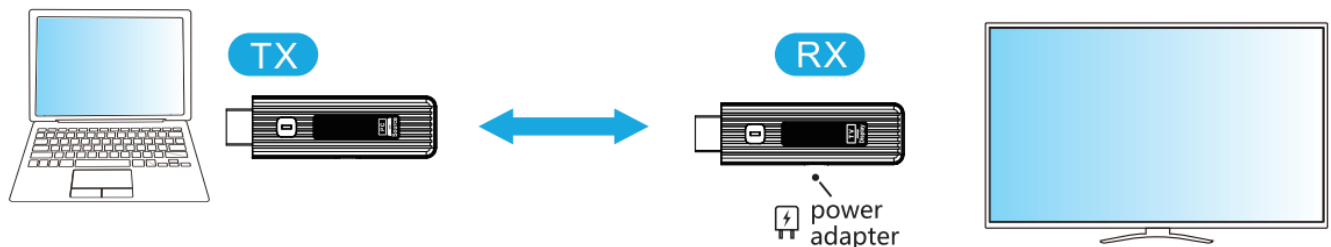
Indicator Light Description

- **Pairing Indicator**
 - Slow flash: not connected Quick Flash: Pairing Always on: Connected
- **HDMI Status Light**
 - **Always on:** HDMI connected
 - **Always off:** HDMI not connected
- **Signal Strength Light**
 - **Always off:** No signal

- **Fault Light, Red**

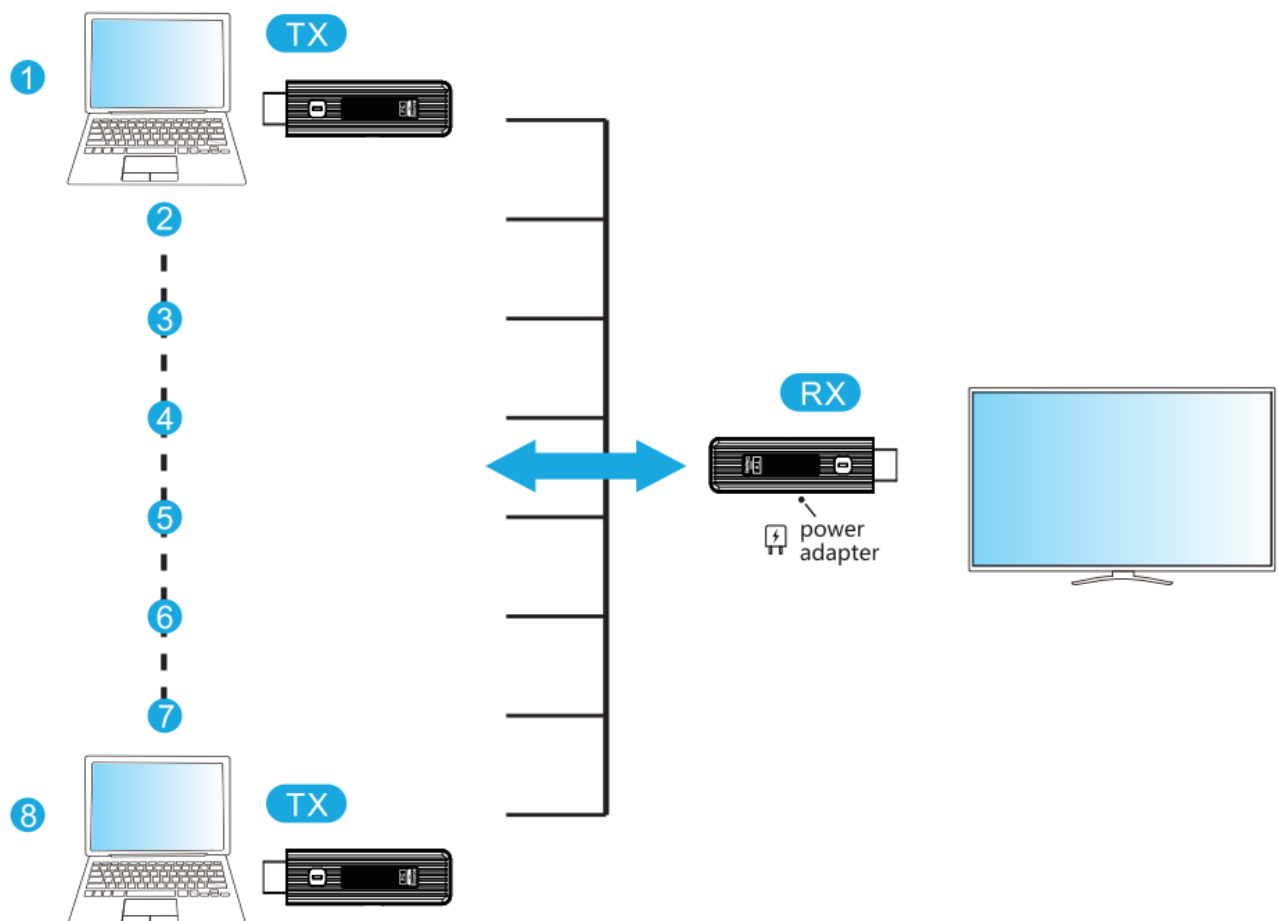
- **Flashing:** Fault state
- **Always off:** Normal state

Transmitter and 1 receiver



Supports many-to-one mode

- Supports up to 8 transmitter to 1 receiver



Pairing method.

- According to the one-to-one pairing method, the first transmitter will be paired with the receiver, after successful pairing, the second transmitter will be paired one-to-one with

the receiver, and so on will be the third, fourth, fifth, sixth, seventh and eighth transmitters respectively with the same receiver. When each transmitter is successfully paired with the same receiver, the pairing is completed and the power can be turned on. (Remarks: Multi-pair support up to eight transmitters to one receiver)

Usage method

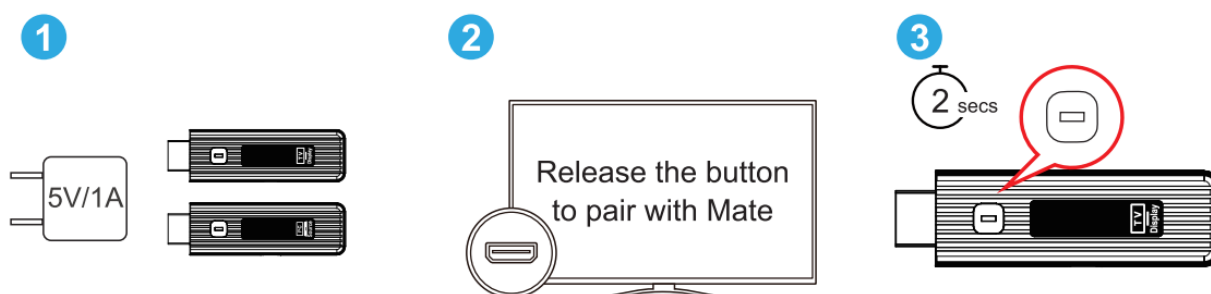
- **Usage method:** Multiple transmitters to one receiver support up to 8 to 1, when switching, you need to press the pair key of the transmitter, for example: current display of the No. 1 transmitter, if you want to display the No.2 transmitter, at this time, press the pair key on the No. 1 transmitter (the display screen shows the pairing tick screen), then press the pair key on the No.2 transmitter to switch to the screen of the No.2 unit, and so on. Note: Each transmitter can be displayed arbitrarily.

Wireless Transmitter Pairing Method

Pairing Steps

1. Receiver side

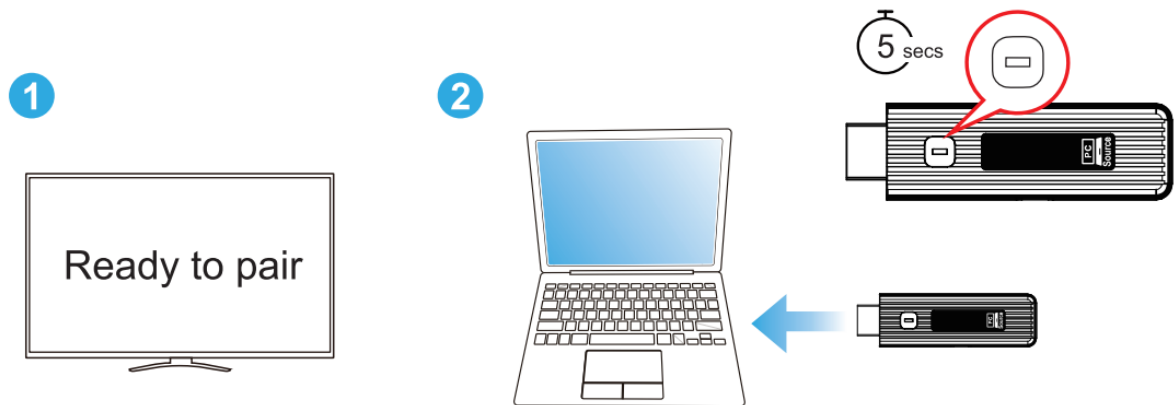
1. Connect the receiver USB port to the USB power supply or device with USB port
2. Connect the receiver HDMI port to the display device.
3. Long press the reset pairing button on HDMI side of the receiver for about 2 seconds (not so long), wait for the screen to display “Release the button to pair with Mate” then immediately release the button



2. Transmitter side

1. Connect the transmitter USB port to a USB-powered device, and wait for the screen to display “Ready to pair”
2. Long press the reset pairing button on HDMI side of the transmitter for about 5 seconds, wait until the signal light goes off and release the button, then wait for the screen to show “” to indicate successful pairing.

3. Then wait for the screen to show “” to indicate successful pairing.



Attention: The press key on the receiver side of the wireless transmission has two setting modes depending on the pressing time.

1. Press and hold for 2 seconds: open the pairing mode of the receiver for pairing with the transmitter, so the pairing can not be pressed for too long
2. long press 10 seconds: the receiver back to the original factory settings.

FCC

FCC WARNING

This device complies with part 15 of the FCC Rules.

Operation is subject to the following two conditions:

1. this device may not cause harmful interference, and
2. this device must accept any interference received, including interference that may cause undesired operation.

Any changes or modifications not expressly approved by the party responsible for compliance could void the user's authority to operate the equipment.

NOTE: This equipment has been tested and found to comply with the limits for a Class B digital device, pursuant to Part 15 of the FCC Rules. These limits are designed to provide reasonable protection against harmful interference in a residential installation. This equipment generates, uses and can radiate radio frequency energy and, if not installed and used in accordance with the instructions, may cause harmful interference

to radio communications. However, there is no guarantee that interference will not occur in a particular installation. If this equipment does cause harmful interference to radio or television reception, which can be determined by turning the equipment off and on, the user is encouraged to try to correct the interference by one or more of the following measures:


- Reorient or relocate the receiving antenna.
- Increase the separation between the equipment and receiver.
- Connect the equipment into an outlet on a circuit different from that to which the receiver is connected.
- Consult the dealer or an experienced radio/TV technician for help.

The device has been evaluated to meet general RF exposure requirement. The device can be used in portable exposure condition without restriction

FAQs

- **Q: How often should I clean the product?**
 - **A:** It is recommended to clean the product after each use to maintain optimal performance.
- **Q: Can I use essential oils with this product?**
 - **A:** No, this product is not designed to be used with essential oils. Only use water as instructed.

Documents / Resources

	<p>Bigway GTHDWL50D Wireless HDMI Transmitter and Receiver [pdf] Instruction Manual</p> <p>GTHDWL50D, 2BGEJ-GTHDWL50D, 2BGEJGTHDWL50D, GTHDWL50D Wireless HDMI Transmitter and Receiver, GTHDWL50D, Wireless HDMI Transmitter and Receiver, HDMI Transmitter and Receiver, Transmitter and Receiver</p>
-------------------------------------------------------------------------------------	-------------------------------------------------------------------------------------------------------------------------------------------------------------------------------------------------------------------------------------------------------------------------------------------------------------------------

References

- [User Manual](#)

📁 Bigway

🔑 2BGEJ-GTHDWL50D, 2BGEJGTHDWL50D, Bigway, GTHDWL50D, GTHDWL50D Wireless HDMI Transmitter and Receiver, HDMI Transmitter and Receiver, Transmitter and Receiver, Wireless HDMI Transmitter and Receiver

Leave a comment

Your email address will not be published. Required fields are marked *

Comment *

Name

Email

Website

☐ Save my name, email, and website in this browser for the next time I comment.

Post Comment

Search:

e.g. whirlpool wrf535swhz

Search

[Manuals+](#) | [Upload](#) | [Deep Search](#) | [Privacy Policy](#) | [@manuals.plus](#) | [YouTube](#)

This website is an independent publication and is neither affiliated with nor endorsed by any of the trademark owners. The "Bluetooth®" word mark and logos are registered trademarks owned by Bluetooth SIG, Inc. The "Wi-Fi®" word mark and logos are registered trademarks owned by the Wi-Fi Alliance. Any use of these marks on this website does not imply any affiliation with or endorsement.

