



## Big ELD Electronic Logging Device User Guide

[Home](#) » [Big ELD](#) » Big ELD Electronic Logging Device User Guide 

### Big ELD Electronic Logging Device



## Contents

- 1 ELD components
- 2 Main features
- 3 Install and connect ELD
- 4 Driving with ELD
- 5 Logs
- 6 Compliance Dashboard
- 7 Driver Details
- 8 Fleet Tracking
- 9 Documents / Resources
  - 9.1 References
- 10 Related Posts

## ELD components

- **Logging Device:** easy to install. Simply plug ELD into a vehicle ECM port and start recording driving hours and miles automatically.
- **Logbook App:** easy to use app for managing hours of service logs. It connects to ELD via Bluetooth and displays recorded driving time to a driver.
- **Smartphone:** Big ELD app works great with most Android and iOS smartphones.

## Main features

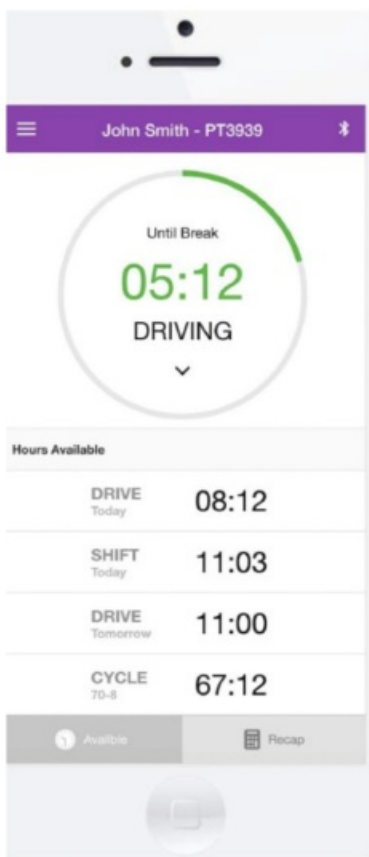
- **Automatic HOS:** Automatic hours of service calculation and violation alerts. Automatic recording of driving time, miles and locations.
- **DOT Inspection Mode:** Simply show logs on your phone or tablet. No printer needed.
- **Multiple HOS Rules:** Compliant with multiple HOS rules including Property/Passenger 60-hour/7-day & 70-hour/8-day.
- **Compliance Monitoring:** Monitor your drivers' hours of service logs and DVIRs. Receive alerts to prevent violations.
- **Fleet Tracking:** Track your vehicles in real time and view their location history.
- **IFTA reporting:** Automatic IFTA state mileage reporting saves you time and money.
- **Access Permissions:** Manage permissions for fleet managers, compliance, officers, drivers, accountants, brokers and customers.

## Install and connect ELD

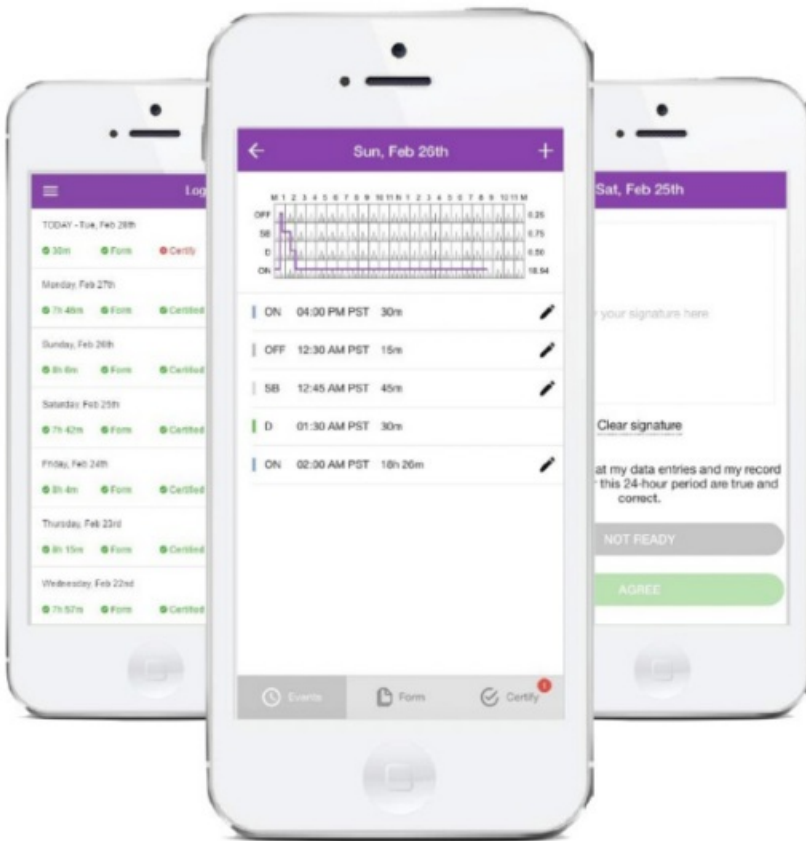
- Locate ECM (diagnostic) port
- Install ELD
- Log into Big EDL Logbook App
- Connect ELD



## Driving with ELD



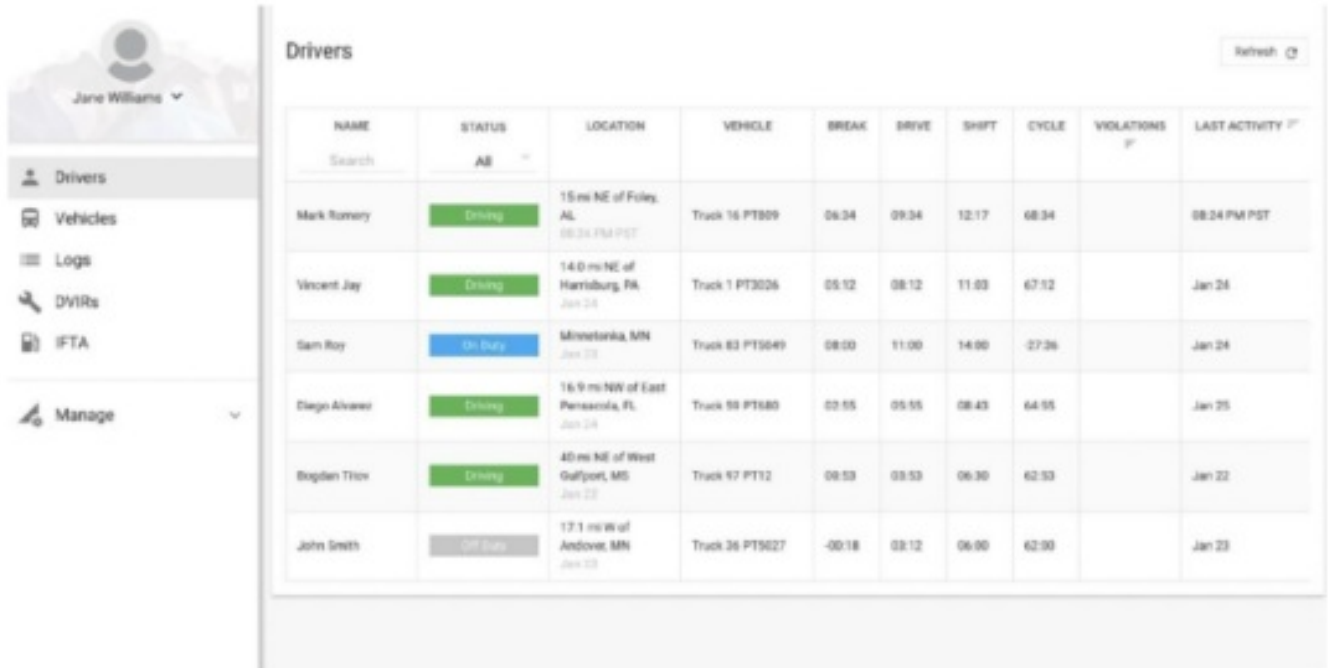
- Once ELD connected, your driving time will be captured automatically.
- Once your vehicle is moving at 5mph or more, your duty status is switched to Driving.
- Your logs and other features are not available while in Driving mode due to safety reasons.
- Once your vehicle is stopped, you may change your duty status by tapping on the, status circle. The app will remind you to make a selection in 5 minutes. If no, selection is made, your duty status will be switched to On Duty.



## Logs

- **Today's Log**  
Tap on TODAY's log to view & manage your current log.
- **Logs History**  
View past logs & violations if any. Tap on a log you would like to view or edit.
- **Statuses/Events T**  
Tap on a specific status in the events section to view location and notes.
- **Certify Log**  
Tap "Certify" and sign your log when your shift ends.

## Compliance Dashboard



NAME	STATUS	LOCATION	VEHICLE	BREAK	DRIVE	SHIFT	CYCLE	VIOLATIONS	LAST ACTIVITY
Mark Romery	Driving	15 mi NE of Foley, AL 08:24 PM PST	Truck 16 PT809	06:34	09:34	12:17	08:34		08:24 PM PST
Vincent Jay	Driving	14.0 mi NE of Harrisburg, PA Jan 24	Truck 1 PT3026	05:12	08:12	11:03	07:12		Jan 24
Sam Roy	On Duty	Minnetonka, MN Jan 23	Truck 83 PT5649	08:00	11:00	14:00	-27:36		Jan 24
Diego Alvarez	Driving	16.9 mi NW of East Pensacola, FL Jan 24	Truck 55 PT680	03:55	05:55	08:43	04:55		Jan 25
Bogdan Triv	Driving	40 mi NE of West Gulfport, MS Jan 22	Truck 17 PT12	08:53	03:53	06:30	02:53		Jan 22
John Smith	Off Duty	17.1 mi W of Andover, MN Jan 23	Truck 36 PT5027	-00:18	03:12	06:00	02:00		Jan 23

## • Current Status

View current statuses and locations of your drivers. Click on a driver to see details.

## • Real-Time Hours

View real-time hours to avoid violations and regulatory fines

## • Violations

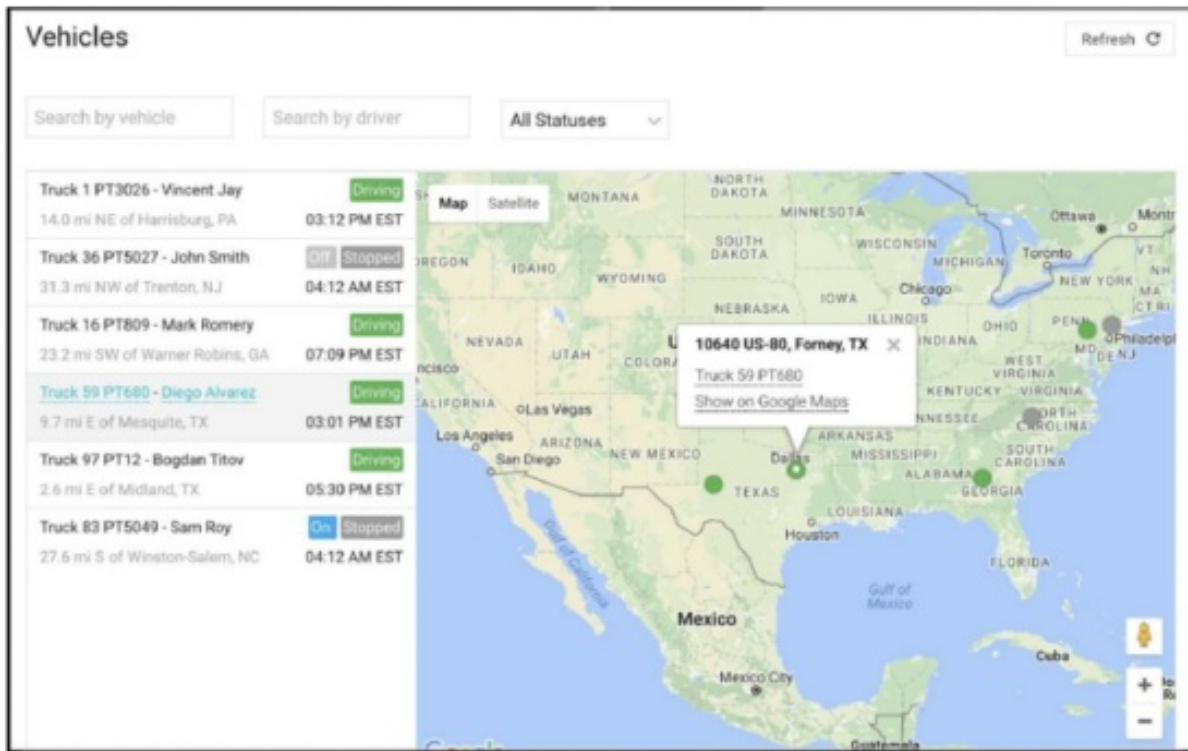
Monitor violations in real time and mitigate compliance risks

## Driver Details

- **Hours of Service:** View current status and real-time hours. Available and reset hours are calculated automatically.
- **Driver Logs:** View current log graph grid and last 14 logs. Click on a log, to see log details. Click "More" to view historical logs.
- **Violations & Errors:** Monitor violations and errors in real time. View past, violations and mitigate compliance risks.
- **Details:** View driver contact information, current or last known, vehicle and location.

## Fleet Tracking


- **Fleet Tracking:** Track your vehicles and view, current locations in real time.
- **Drivers Monitoring:** Instantly know who is behind the wheel and monitor drivers' statuses.
- **Issue Notifications:** Receive real-time alerts for, vehicle defects, diagnostic, issues, nearing violations and, occurred violations.



Big ELD ensures FMCSA compliance and delivers safety and productivity for any fleet. It is a perfect choice for small to large fleets and owner-operators.



## Documents / Resources

	<p><a href="#">Big ELD Electronic Logging Device</a> [pdf] User Guide Electronic Logging Device, Electronic, Logging Device, Device</p>
---	---

## References

- [User Manual](#)

This website is an independent publication and is neither affiliated with nor endorsed by any of the trademark owners. The "Bluetooth®" word mark and logos are registered trademarks owned by Bluetooth SIG, Inc. The "Wi-Fi®" word mark and logos are registered trademarks owned by the Wi-Fi Alliance. Any use of these marks on this website does not imply any affiliation with or endorsement.