



# BG ELECTRICAL NX13ADC-IL-A Door Chime Power Socket Installation Guide

[Home](#) » [BG Electrical](#) » BG ELECTRICAL NX13ADC-IL-A Door Chime Power Socket Installation Guide 

## Contents

- [1 BG ELECTRICAL NX13ADC-IL-A Door Chime Power Socket](#)
- [2 Safety Warning](#)
- [3 Product Information](#)
- [4 Product Usage Instructions](#)
- [5 Accessories](#)
- [6 Wiring Instructions](#)
- [7 Connection \(See diagram\)](#)
- [8 Complete Installation & Test](#)
- [9 Installation](#)
- [10 Door Chime Setup](#)
- [11 Replacing an Existing Accessory](#)
- [12 Technical Information](#)
- [13 Documents / Resources](#)
- [14 Related Posts](#)



**BG ELECTRICAL NX13ADC-IL-A Door Chime Power Socket**



## Safety Warning

For your safety, this product must be installed in accordance with local Building Regulations. If in any doubt, or where required by the law, consult a competent person who is registered with an electrical self-certification scheme. Further information is available online or from your Local Authority.

Please read carefully and use in accordance with these safety wiring instructions. Before commencing any electrical work ensure the supply is switched off at the mains. Either by switching off the consumer unit or by removing the appropriate fuse or turning off MCB (trip). Wiring should be in accordance with the latest edition of the IET regulations (BS 7671). To prevent fire hazard always use cable of the correct rating & type for the application.

**Warning** do not exceed the load rating of this device as stated on the rear of the product.

### Wire Identification – Twin & Earth Cable

**Note** – As from 1st April 2004 new colour codes for hard wire installations were introduced.

**EARTH** = Green/Yellow Sleaving

**NEUTRAL** = Black (pre Apr 04) / Blue (after Apr 04)

**LIVE** = Red (pre Apr 04) / Brown (after Apr 04)



## Product Information

The NX13ADC/IL/A is a 13A Socket with Door Chime which comes with wiring accessories including a push button, fixing screws, rawl plugs, double-sided sticky pad, and push button battery (3V CR2032). This product requires a live, neutral, and earth connection to function. It has a functional earth, neutral, and live connection. The push button requires a battery to operate.

## Product Usage Instructions

**1. Power Off:** Before starting any installation or replacement process, ensure that the power supply to the mounting box is turned off.

## Accessories

### Push Button Installation

1. Identify a suitable area for the push button to be positioned. Ideally, this should be sheltered from rain or excess heat.
2. Place a small flathead screwdriver into the slotted hole and gently twist to remove push button back.
3. Offer the push button backing up to the wall and drill holes. If fitting to masonry, use a 6mm drill bit, as per the depressions and securing by using the supplied rawl plugs and screws. If fitting directly to the woodwork, use a 2mm drill bit and screw directly into frame or use the provided sticky pad.
4. Pull plastic tab from under battery to power the push button.
5. Refit the push button to the secured backing by offering up the button of the push button and gently pushing back together.

1. x2 Fixing Screws
2. x2 Rawl Plugs
3. Double Sided Sticky Pad
4. Push Button Battery (3V CR2032)

### Socket/Chime

1. x2 Fixing Screws

## Wiring Instructions

### Power Off

Before commencing work always isolate the power at the consumer unit/ fuse box.

**\*Note** – If your installation uses a four-lug metal mounting box, remove the top and bottom lugs or bend fully back.

### Replacing an existing accessory

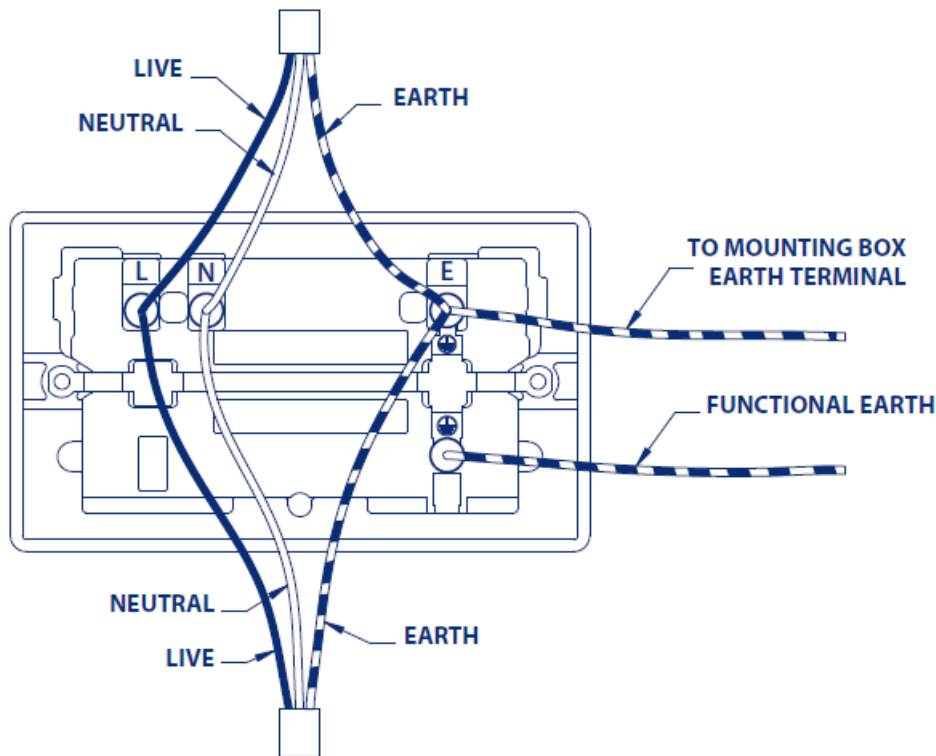
1. Unscrew the accessory from the wall/mounting box.
2. **Note the cable connections:**  
The illustration shows 1 wire of each colour connected to each terminal. There should be an additional connection between the mounting box earth terminal and the accessory earth terminal.
3. Unscrew each terminal to release the wire.

### New installation

1. Install mounting box (metal or moulded) for either flush or surface mounting, ensuring appropriate size of product.
2. Select the most suitable entry point of the mounting box (knock-out) and route the cables through. If a metal box is used, a cable grommet should be fitted to the entry point.

3. Cables should be prepared so a sufficient conductor length reaches the terminals. Strip the ends of the individual conductors leaving an adequate length bare to enter terminals.

### Connection (See diagram)



Follow the wiring diagram provided in the user manual to connect the live, neutral, and earth wires. Ensure that the connections are tight and secure.

1. Line up the new accessory to mounting box and take note of where each terminal is located.
2. Connect each wire to the matching terminal. An earth connection should always be made between the mounting box earth terminal and the accessory earth terminal, where fitted. All bare earth wires must be sheathed with green/yellow sleeving. When connecting the new accessory ensure that only the bare end of the wire enters the terminal and no bare wires are visible.
3. Tighten terminal screws securely. (Do not over tighten)
4. This socket is fitted with two linked terminals to provide a dual earth facility. This is for use in “clean” installations where additional earth capacity is required to comply with Regulation 607 IEE Wiring Regulations

### Complete Installation & Test

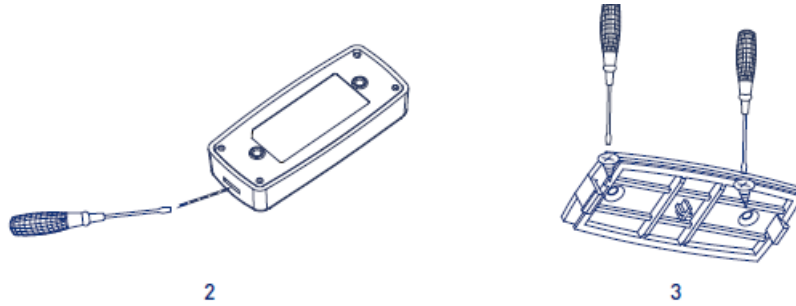
1. Carefully position the accessory into the mounting box, ensuring that no wires are trapped between the plate and the wall and secure with screws (do not over tighten) then insert screw covers (optional).
2. Once the installation has been completed correctly, replace the fuse/reset MCB (trip), switch the power back on at the consumer unit, and test.

### Installation

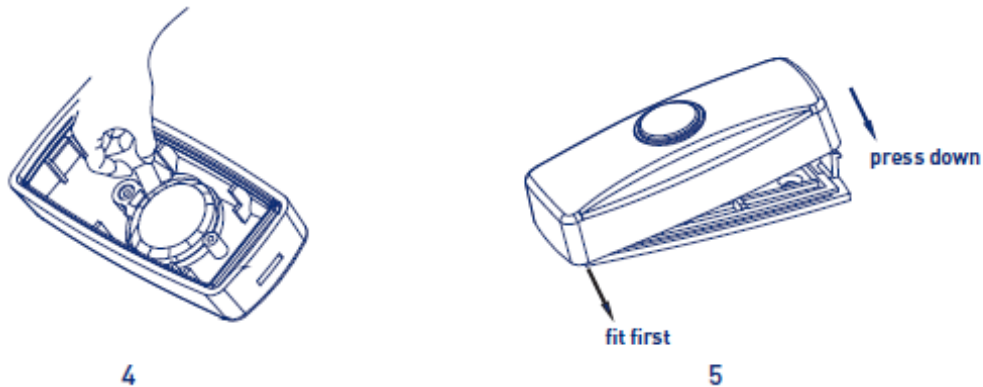
1. First, identify a suitable area for the push button to be positioned. Ideally, this should be sheltered from rain or

excess heat. It would be recommended that the button is fitted to the door frame itself, so you are able to screw directly into the woodwork, making the installation simple.

2. Place a small flathead screwdriver into the slotted hole and gently twist to remove push button back



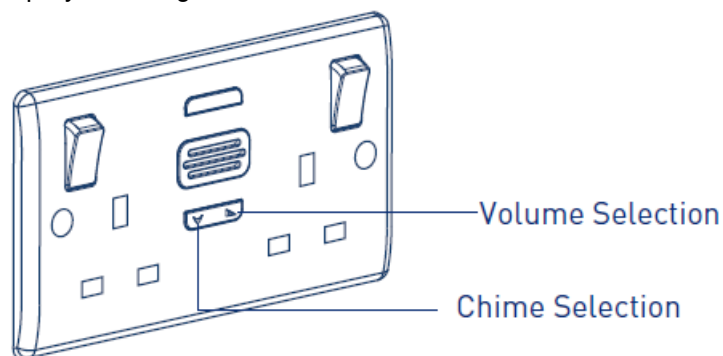
3. Offer the push button backing up to the wall and drill holes. If fitting to masonry, use a 6mm drill bit, as per the depressions and securing by using the supplied rawl plugs and screws. If fitting directly to the woodwork, use a 2mm drill bit and screw directly into frame or use the provided sticky pad.
4. Pull plastic tab from under battery to power the push button.



5. Refit the push button to the secured backing by offering up the button of the push button and gently pushing back together.

## Door Chime Setup

The door chime can be set up by following the instructions below:



- **Volume Selection:** Press the volume button to select the desired volume.
- **Chime Selection:** Press the melody button to select the desired chime.
- **Pairing Additional Push Buttons & Door**

**Chimes:** Press and hold the melody button until the LED illuminates, then release. Push the button on the push button, once the door chime socket will ring, then the units are paired. Repeat the process to pair additional push buttons to the door chime. (A maximum of 16 push buttons can be paired).

- **Reset Door Chime:** Press and hold the melody button for 10 seconds or until you hear a triple 'beep' to reset the door chime.

## Replacing an Existing Accessory

1. Unscrew the existing accessory from the wall/mounting box.
2. Note the cable connections. The illustration shows 1 wire of each color connected to each terminal. There should be an additional connection between the mounting box earth terminal and the accessory earth terminal.
3. Unscrew each terminal to release the wire.

## Unique Code Selection

The door chime and push button will be paired straight out of the box, with 1 out of 1 million unique codes to prevent interference with another door chime. If the door chime does not sound, please refer to the 'Pairing Additional Push Buttons & Door Chimes' section.

## Technical Information

- Push Button Battery : 1 x 3V CR2032
- Push Button : IP44
- Melody Count : 6
- Sound Level : 80dB
- Range : 100M (open air)
- Wall Box Depth : 25mm

## Batch Code explanation

yyWxx Manufacturing date code, year of manufacture (yy) and week of manufacture (Wxx)

## EU Declaration of Conformity

EU Declaration of Conformity

**Applicant:** Luceco PLC

**Address:** Luceco Distribution Centre, Stafford Park 1, Telford Shropshire,  
**United Kingdom**

(EU) Luceco SEC/Bohinadora 1-5 08302 Mataró SPAIN

**Description:** 13A Socket with Door Chime

**Model:** 822BELL

We (Luceco PLC) declare under our sole responsibility that the products above are in conformity with the essential requirements of the following: Signed for and on behalf of: David Cleaver

**Senior Product Manager**

**Place of Issue:** Stafford Park 1, Telford Shropshire, United Kingdom

**Date of Issue:** 16/Mar/2020

## Push Button

This product contains a coin/button cell battery and if ingested can cause severe chemical burns. If the battery has been ingested, please seek medical advice immediately. In just 2 hours a digested battery can lead to death. Keep new and used batteries away from children. If the battery compartment does not close securely, please stop using the product.

## IMPORTANT

This product does not consist of any serviceable parts and should not be repaired. The device should not be operated by persons who have a lack of experience or knowledge in using such products. People who have a

reduced physical, sensory or mental capability should be supervised or given instruction when operating. Children should be supervised, so that they do not play with the device.

### Environmental Protection

This symbol is known as the “Crossed-out Wheelie Bin Symbol”. When this symbol is marked on a product or battery, it means that it should not be disposed of with your general household waste. Some chemicals contained within electrical/ electronic products or batteries can be harmful to health and the environment. Only dispose of electrical/electronic/ battery items in separate collection schemes, which cater for the recovery and recycling of materials contained within. Your co-operation is vital to ensure the success of these schemes and for the protection of the environment.

### Address/Helpline

#### Luceco PLC

Stafford Park 1  
Telford TF3 3BD  
ENGLAND

#### (EU) Luceco SE

C/ Bobinadora 1-5  
08302 Mataró  
SPAIN

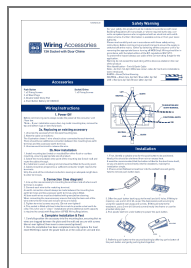
If you have further technical assistance you can get in touch with our

**Technical Helpline on:**

**+44 (0)3300 249 279**

[technical.support@bgelectrical.co.uk](mailto:technical.support@bgelectrical.co.uk)

### Documents / Resources



[BG ELECTRICAL NX13ADC-IL-A Door Chime Power Socket](#) [pdf] Installation Guide  
NX13ADC-IL-A Door Chime Power Socket, NX13ADC-IL-A, Door Chime Power Socket, Chime  
Power Socket, Power Socket, Socket