



# bf1systems TP24G1WE TPMS Wheel Sensor User Guide

[Home](#) » [bf1systems](#) » bf1systems TP24G1WE TPMS Wheel Sensor User Guide 

## bf1systems TP24G1WE TPMS Wheel Sensor User Guide



### Contents

- [1 Modifications](#)
- [2 System Contents](#)
- [3 Features and User Manual](#)
- [4 Warranty](#)
- [5 Technical Specification](#)
- [6 Installation](#)
- [7 Regulatory Information](#)
- [8 Documents / Resources](#)
- [9 Related Posts](#)

### Modifications

Date	Modifications	Author	Version	Modified Sheets	Approved		
					By	Date	Signed
05/02/2021	New Document	WL	1_00				

## System Contents

The TPMS system consists of four ECU's (with integrated Antenna), one of which is mounted in each wheel arch, the wheel sensors are mounted into the wheel. Wheel sensor data is communicated via the ECU over the vehicles' CAN bus.

A full vehicle system includes;

- 4x 1SYSTEM Wheel Sensors
- 4x 1SYSTEM ECU Antennas

Please note.

- Tyre valves are sold and available to purchase separately and are not included as part of the wheel sensor supplied.

Supporting documentation;

- CAN Protocol, Pinout and dbc file

## Features and User Manual

The features and the content of the user manual may change, please contact bf1systems for the latest version.

## Warranty

Please refer to the terms and conditions of sale.

## Technical Specification

### ECU:

Supply: 6.5 – 18 VDC (limited to Maximum 3A)

Transmission Power: 1mW

Frequency: 2.4GHz – 2.48GHz

Operating Temperature: 0°C to 105°C

Ingress Protection: IP6K7

### Sensor:

Supply: Built-in battery 3V coin cell

Transmission Power: 1mW  
Frequency: 2.4GHz – 2.48GHz  
Operating Temperature: 15°C to 125°C

Please refer to the product datasheet for further details.

## Installation

The system components should be securely fastened in place, see below;

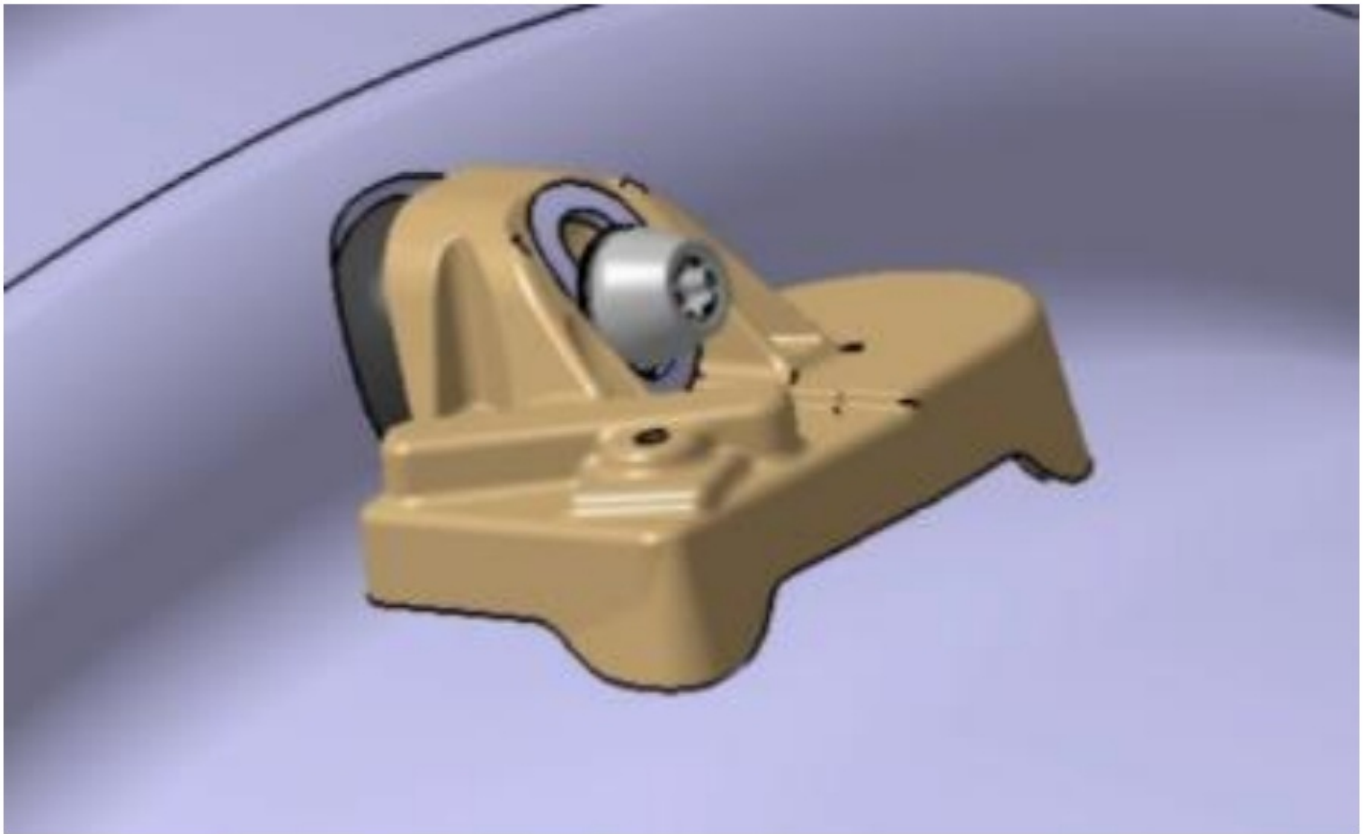
### ECU:

Fastener: M6 Cap Head with plain washer  
Torque: 5Nm Max



### Sensor\*:

Fastener: Valve kit  
Torque: 4.5Nm Max



Please refer to the product installation guide for further details.

## Regulatory Information

### Europe

DECLARATION OF **CE** CONFORMITY

The 1SYSTEM TPMS complies with current European directives.

The declarations of conformity of the various parts of the kit can be found at the end of this document.

### USA

**FC** FCC STATEMENT

The device complies with Part 15 of the **FC** rules. Operation is subject to the following two conditions;

(1) It must not cause interference and

(2) The device must accept any radio-electric interference suffered, even if the interference is likely to compromise its use.

## CAUTIONS

Modifications not authorised by the manufacturer may void the user's authority to operate these devices.

## RF EXPOSURE STATEMENT



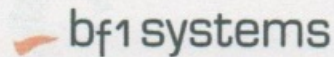
This equipment complies with the RF radiation exposure limits sets forth for an uncontrolled environment. This equipment should be installed and operated with a minimum distance of 20cm between the radiator and any part of your body.

Australia



DECLARATION OF CONFORMITY

Europe



## EU Declaration of Conformity

In Accordance with Directive 2014/53/EU (RED)

We, **bf1systems Ltd,**  
Technical Centre, Owen Road, Diss, Norfolk, IP22 4ER, United Kingdom.

declare under our sole liability, that the following product,

Model Type ref	Description	Part Number
TP24G1WE	1SYSTEM TPMS Wheel Sensor	F1-XXX-1800-XXX Series

is in conformity with the essential requirements of Article 3 of the RED (2014/53/EU), if used for its intended purpose.

The product described above has been tested and found to be in conformity with the standards and normative documents:

- Health and Safety requirements contained in Article 3.1a
  - EN 62479:2010
  - IEC 62368-1:2014 (Second Edition)
- Protection requirements with respect to electromagnetic compatibility Article 3.1b
  - ETSI EN 301 489-17 V3.2.2 (2019-12) (Draft)
  - EN 61326-1:2013
- Means of the efficient use of the radio frequency spectrum Article 3.2
  - ETSI EN 300 328 V2.2.2 (2019-07)

Signed for and on behalf of bf1systems Ltd,

Place of Issue: Diss, UK  
Date of issue: 2020-12-18

Name: Matt Norton  
Position: Operations Director

Signature: 

Name: Martyn Bensley  
Position: Technical Product Manager

Signature: 

This declaration will no longer be valid if any unauthorized modifications are made to the product including the alteration in any form to the software with the prior written approval of bf1systems Ltd.





## EU Declaration of Conformity

In Accordance with Directive 2014/53/EU (RED)

We, **bf1systems Ltd,**  
Technical Centre, Owen Road, Diss, Norfolk, IP22 4ER, United Kingdom.

declare under our sole liability, that the following product,

Model Type ref	Description	Part Number
BF24G1EC	1SYSTEM ECU Lite (Type G1)	F1-XXX-1799-XXX Series

is in conformity with the essential requirements of Article 3 of the RED (2014/53/EU), if used for its intended purpose.

The product described above has been tested and found to be in conformity with the standards and normative documents:

1. Health and Safety requirements contained in Article 3.1a
  - EN 62479:2010
  - IEC 62368-1:2014 (Second Edition)
2. Protection requirements with respect to electromagnetic compatibility Article 3.1b
  - ETSI EN 301 489-17 V3.2.2 (2019-12) (Draft)
  - EN 61326-1:2013
3. Means of the efficient use of the radio frequency spectrum Article 3.2
  - ETSI EN 300 328 V2.2.2 (2019-07)

Signed for and on behalf of bf1systems Ltd,

Place of Issue: Diss, UK  
Date of Issue: 2020-12-18

Name: Matt Norton  
Position: Operations Director

Signature 

Name: Martyn Bensley  
Position: Technical Product Manager

Signature 

This declaration will no longer be valid if any unauthorized modifications are made to the product including the alteration in any form to the software with the prior written approval of bf1systems Ltd.

Technical Centre, Owen Road, Diss, Norfolk, England, IP22 4ER  
Telephone: +44 (0)1379 646200 Fax: +44 (0)1379 770029

bf1systems Limited Registered Office: Australia  
Registered in England No. 2402238 VAT Registration No. GB 761396138

[www.bf1systems.com](http://www.bf1systems.com)



Australia

## Supplier's declaration of conformity



As required by the following Notices:

- Radiocommunications (Compliance Labelling - Devices) Notice 2014 made under section 182 of the Radiocommunications Act 1992;
- Radiocommunications Labelling (Electromagnetic Compatibility) Notice 2017 made under section 182 of the Radiocommunications Act 1992;
- Radiocommunications (Compliance Labelling - Electromagnetic Radiation) Notice 2014 made under section 182 of the Radiocommunications Act 1992; and
- Telecommunications (Labelling Notice for Customer Equipment and Customer Cabling) Instrument 2015 made under section 407 of the Telecommunications Act 1997.

**Instructions for completion**

Do not return this form to the ACMA. This completed form must be retained by the supplier as part of the documentation required for the compliance records and must be made available for inspection by the ACMA, when requested.

**Supplier's details**

Company Name (or various):

RCM Responsible Supplier number

Braco Compliance Pty Ltd

E304

Street Address (Australian)

OR

Unit 308, 469-481 High St

ACN/ABN

Northcote, VIC 3070

84156023504

**Product details**

Product description - brand name, type, current model, lot, batch or serial number (if available), software/firmware version (if applicable)



1SYSTEM Tyre Pressure Monitoring System (TPMS), comprising  
Model 1SYSTEM ECU Lite and Model 1SYSTEM TPMS Wheel Sensor.

**Compliance - applicable standards and other supporting documents**

Evidence of compliance with applicable standards may be demonstrated by test reports, endorsed/accredited test reports, certification/competent body statements. Having had regard to these documents, I am satisfied the above mentioned product complies with the requirements of the relevant ACMA Standards made under the Radiocommunications Act 1992 and the Telecommunications Act 1997.

List the details of the documents the above statement was made, including the standard title, number and, if applicable, number of the test report/endorsed test report or certification/competent body statement.

Radiocommunications (Electromagnetic Compatibility) Standard 2017, refer Element Materials Technology Warwick Ltd. EN 61326-1:2013 test report No. TRA-049589-35-00C dated 3 October 2020.

Radiocommunications (Short Range Devices) Standard 2014, refer Element Materials Technology Warwick Ltd. ETSI EN 300 328 v2.2.2 test report Nos. TRA-049589-47-00C dated 5 October 2020 and TRA-049589-47-01B dated 30 September 2020.

Radiocommunications (Electromagnetic Radiation - Human Exposure) Standard 2014, refer Element Materials Technology Warwick Ltd. EN 62479:2010 certificate No. TRA-049589-47-02B dated 30 September 2020.

**Declaration**

I hereby declare that:

1. I am authorised to make this declaration on behalf of the Company mentioned above,
2. the contents of this form are true and correct, and
3. the product mentioned above complies with the applicable above mentioned standards and all products supplied under this declaration will be identical to the product identified above.

Note: Under section 137.1 of the Criminal Code Act 1995, it is an offence to knowingly provide false or misleading information to a Commonwealth entity.

Penalty: 12 months imprisonment

Bruce Maule

Director

18 December 2020

The Privacy Act 1988 (Cth) (the Privacy Act) imposes obligations on the ACMA in relation to the collection, security, quality, access, use and disclosure of personal information. These obligations are detailed in the Australian Privacy Principles.

The ACMA only collect personal information if it is reasonably necessary for, or directly related to, one or more of the ACMA's functions or activities.

The purpose of collecting the personal information in this form is to ensure the supplier is identified in the 'Declaration of conformity'. If the Declaration of Conformity is not completed and the requested information is not provided, a compliance label cannot be applied.

Further information on the Privacy Act and the ACMA's Privacy Policy is available at [www.acma.gov.au/privacy-policy](http://www.acma.gov.au/privacy-policy). The Privacy Policy contains details about how you may access personal information about you that is held by the ACMA, and seek the correction of such information. It also explains how you may complain about a breach of the Privacy Act and how we will deal with such a complaint.

If you have any questions in this regard, please contact the ACMA's privacy contact officer on telephone on 1800 201 887 or by email at [privacy@acma.gov.au](mailto:privacy@acma.gov.au)

ACMA form - C02

Page 1 of 1

January 2018





1. Introduction

Model	Manufacturer	Year	Model	Year	Model
TP24G1WE	USX	2014	USX-TP24G1WE	2014	USX-TP24G1WE

2. Table of Contents

1. Introduction	1
2. Table of Contents	2
3. TP24G1WE	3
4. USX-TP24G1WE	4
5. USX-TP24G1WE	5
6. USX-TP24G1WE	6
7. USX-TP24G1WE	7
8. USX-TP24G1WE	8
9. USX-TP24G1WE	9
10. USX-TP24G1WE	10
11. USX-TP24G1WE	11
12. USX-TP24G1WE	12
13. USX-TP24G1WE	13
14. USX-TP24G1WE	14
15. USX-TP24G1WE	15
16. USX-TP24G1WE	16
17. USX-TP24G1WE	17
18. USX-TP24G1WE	18
19. USX-TP24G1WE	19
20. USX-TP24G1WE	20
21. USX-TP24G1WE	21
22. USX-TP24G1WE	22
23. USX-TP24G1WE	23
24. USX-TP24G1WE	24
25. USX-TP24G1WE	25
26. USX-TP24G1WE	26
27. USX-TP24G1WE	27
28. USX-TP24G1WE	28
29. USX-TP24G1WE	29
30. USX-TP24G1WE	30
31. USX-TP24G1WE	31
32. USX-TP24G1WE	32
33. USX-TP24G1WE	33
34. USX-TP24G1WE	34
35. USX-TP24G1WE	35
36. USX-TP24G1WE	36
37. USX-TP24G1WE	37
38. USX-TP24G1WE	38
39. USX-TP24G1WE	39
40. USX-TP24G1WE	40
41. USX-TP24G1WE	41
42. USX-TP24G1WE	42
43. USX-TP24G1WE	43
44. USX-TP24G1WE	44
45. USX-TP24G1WE	45
46. USX-TP24G1WE	46
47. USX-TP24G1WE	47
48. USX-TP24G1WE	48
49. USX-TP24G1WE	49
50. USX-TP24G1WE	50
51. USX-TP24G1WE	51
52. USX-TP24G1WE	52
53. USX-TP24G1WE	53
54. USX-TP24G1WE	54
55. USX-TP24G1WE	55
56. USX-TP24G1WE	56
57. USX-TP24G1WE	57
58. USX-TP24G1WE	58
59. USX-TP24G1WE	59
60. USX-TP24G1WE	60
61. USX-TP24G1WE	61
62. USX-TP24G1WE	62
63. USX-TP24G1WE	63
64. USX-TP24G1WE	64
65. USX-TP24G1WE	65
66. USX-TP24G1WE	66
67. USX-TP24G1WE	67
68. USX-TP24G1WE	68
69. USX-TP24G1WE	69
70. USX-TP24G1WE	70
71. USX-TP24G1WE	71
72. USX-TP24G1WE	72
73. USX-TP24G1WE	73
74. USX-TP24G1WE	74
75. USX-TP24G1WE	75
76. USX-TP24G1WE	76
77. USX-TP24G1WE	77
78. USX-TP24G1WE	78
79. USX-TP24G1WE	79
80. USX-TP24G1WE	80
81. USX-TP24G1WE	81
82. USX-TP24G1WE	82
83. USX-TP24G1WE	83
84. USX-TP24G1WE	84
85. USX-TP24G1WE	85
86. USX-TP24G1WE	86
87. USX-TP24G1WE	87
88. USX-TP24G1WE	88
89. USX-TP24G1WE	89
90. USX-TP24G1WE	90
91. USX-TP24G1WE	91
92. USX-TP24G1WE	92
93. USX-TP24G1WE	93
94. USX-TP24G1WE	94
95. USX-TP24G1WE	95
96. USX-TP24G1WE	96
97. USX-TP24G1WE	97
98. USX-TP24G1WE	98
99. USX-TP24G1WE	99
100. USX-TP24G1WE	100



**bf1systems TP24G1WE TPMS Wheel Sensor** [pdf] User Guide

TP24G1WE, USX-TP24G1WE, USXTP24G1WE, BF24G1EC, USX-BF24G1EC, USXBF24G1E C, TP24G1WE TPMS Wheel Sensor, TP24G1WE, TPMS Wheel Sensor

Manuals+.com