

beyond
H3 Running Man
Combo Exit Sign



BEYOND H3 Running Man Combo Exit Sign Instruction Manual

[Home](#) » [BEYOND](#) » BEYOND H3 Running Man Combo Exit Sign Instruction Manual 

Contents

- 1 [BEYOND H3 Running Man Combo Exit Sign](#)
- 2 [Product Information](#)
- 3 [Product Features](#)
- 4 [Specifications](#)
- 5 [Dimensions](#)
- 6 [Installation](#)
- 7 [WIRING DIAGRAM](#)
- 8 [Assembly Lamp Heads](#)
- 9 [Mounting Instruction](#)
- 10 [Connecting Remote Heads](#)
- 11 [Application Picture](#)
- 12 [PACKAGE](#)
- 13 [Warranty](#)
- 14 [Documents / Resources](#)
 - 14.1 [References](#)
- 15 [Related Posts](#)

beyond

BEYOND H3 Running Man Combo Exit Sign



Product Information

Specifications

Parameter	Description	Value	
Model	JRMECW	Non-Maintained	
Mode of operation		Supply Voltage	120/347V/60 Hz
Output Voltage	4.5VDC		
Output Power	4W		
Lumen Output	150+Lm		
Colour Temperature	6000K-7000K		
Battery	3.6V 1000mAh Ni-Cd Battery		
Max Charge Current (mA)	AC:110mA/DC:230mA		
Max Discharge Current (mA)	800mA		
Charging Time	24H		
Discharge Time	90Min		
LEDs	14 LEDS+2*1.2W LED lamp head		
Net Weight	2.7LBS		
Gross Weight	2.76LBS		
IP Rating	IP20		
Certification	UL Listed		
Warranty	Five years warranty for the electrical parts and housing; Three years warranty for battery.		

Installation

To install the H3TM Running Man Combo Exit Sign LED Emergency Lights, follow these steps:

1. Ensure the power supply is turned off before installation.
2. Mount the exit sign in a prominent location that is easily visible in case of an emergency.
3. Connect the appropriate power supply as per the specified voltage requirements (120/347V/60Hz).
4. If needed, adjust the direction of the exit sign to ensure optimal visibility.
5. Once installed, test the functionality of the exit sign to ensure it illuminates properly during emergencies.

Dimensions

The dimensions of the H3TM Running Man Combo Exit Sign LED Emergency Lights are:

- Width: 9.05 inches
- Height: 13.58 inches

- Depth: 1.97 inches

Frequently Asked Questions (FAQ)

- Q: What is the warranty coverage for this product?

A: The product comes with a five-year warranty for the electrical parts and housing, and a three-year warranty for the battery.

- Q: What is the IP rating of this product?

A: The product has an IP20 rating.

- Q: What is the colour temperature of the LEDs?

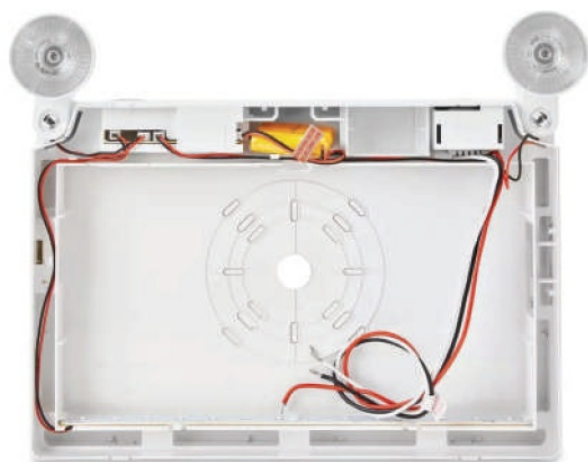
A: The colour temperature of the LEDs is 6000K-7000K.

Product Features

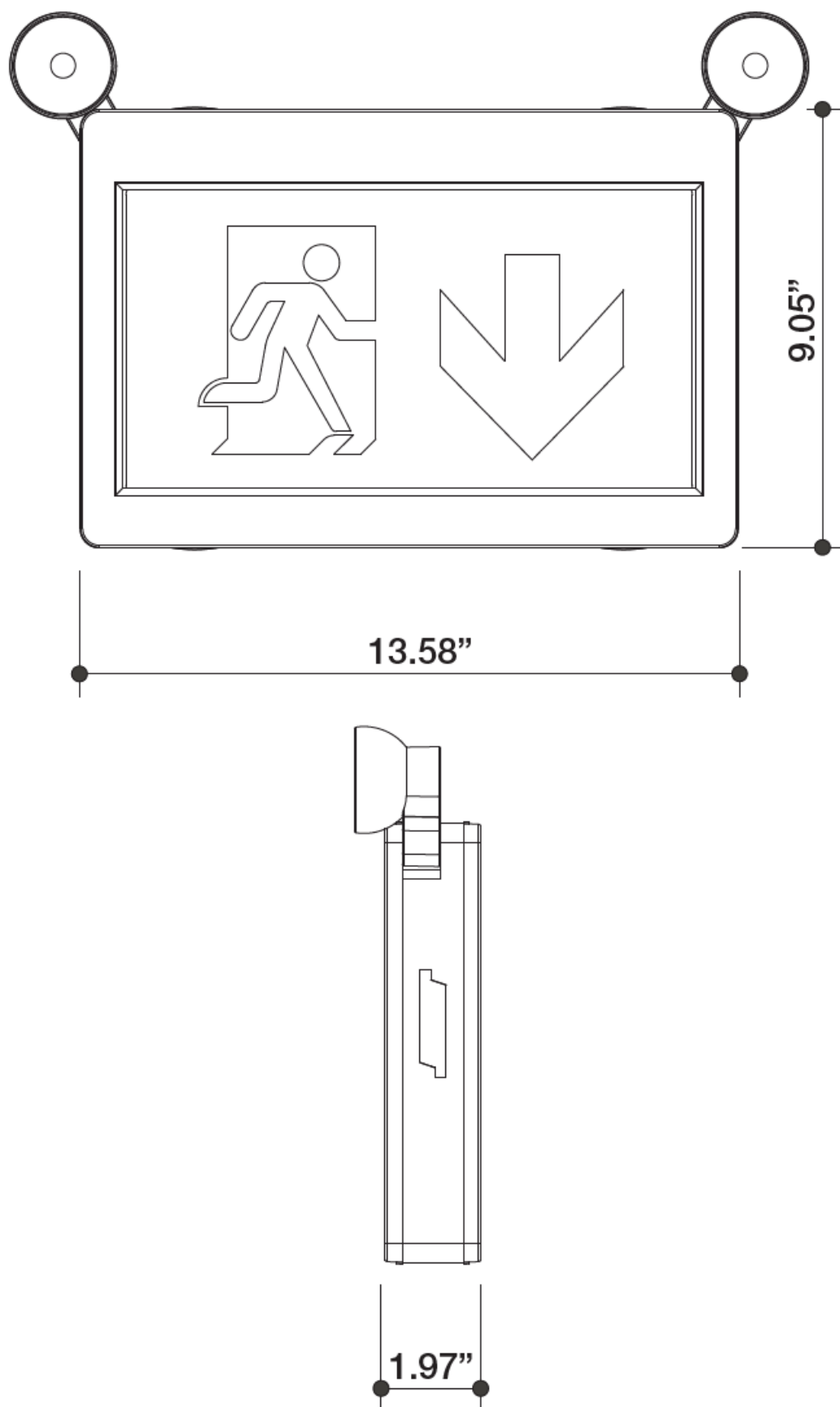
- SKU # 155391
- Output Power: 4W
- Lumens: 150+lm
- CCT: 6000K-7000K
- Injection-molded thermoplastic ABS housing
- Charging Time: 24H
- Discharging Time: 90 MIN
- Input Volt: 120/347V/60Hz
- Battery: 3.6V 1000mAh Ni-Cd Battery
- IP Rating: IP20
- LED: 14 LEDS+2*1.2W LED lamp head
- Certifications: UL Listed
- Warranty: (5 years warranty for the electrical parts and housing; 3 years warranty for battery)”

Specifications

Parameter	Description	Value
General Performance	Model	JRMECW
	Mode of operation	Non-Maintained
	Supply Voltage	120/347V/60Hz
	Wattage	6W MAX
	Output Voltage	4.5VDC
	Output Power	4W
	Lumen Output	150+Lm
	Colour Temperature	6000K-7000K
	Battery	3.6V 1000mAh Ni-Cd Battery
	Max Charge Current (mA)	AC:110mA/DC:230mA
	Max Discharge Current (mA)	800mA
	Charging Time	24H
	Discharge Time	90Min
	LED	14 LEDS+2*1.2W LED lamp head
	Net Weight	2.7LBS
	Gross Weight	2.76LBS
	IP Rating	IP20
	Certification	UL Listed
	Warranty	Five years warranty for the electrical parts and housing; Three years warranty for battery



Dimensions



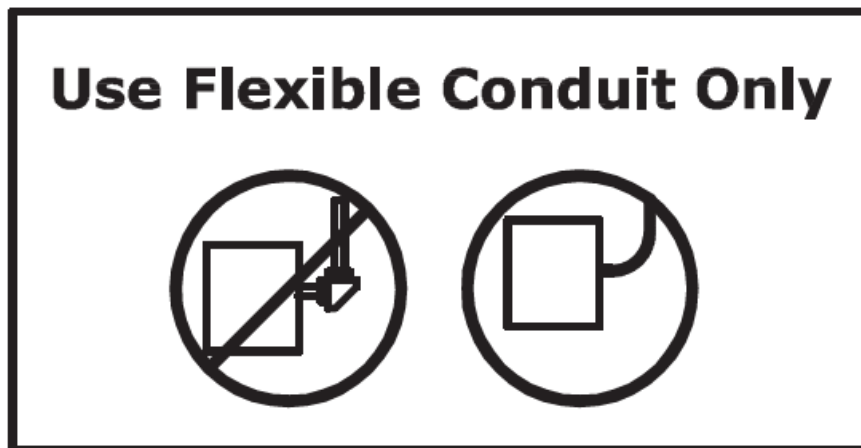
Installation

PICTOGRAM EXIT SIGN AND EMERGENCY LIGHT COMBINATION

IMPORTANT SAFEGUARDS READ AND FOLLOW ALL SAFETY INSTRUCTIONS

1. Review the diagrams thoroughly before beginning.

2. All electrical connections must be by local codes, ordinances, and the National Electric code.
3. Disconnect power at fuse or circuit breaker before installing or servicing.
4. Do not use outdoors.
5. Do not mount in hazardous locations, or near gas or electric heaters.
6. Do not let power cords touch hot surface.
7. Equipment should be mounted in locations and at heights where it will not be subjected to tampering by unauthorized personnel.
8. The use of accessory equipment not recommended by the manufacturer may cause an unsafe condition.
9. Do not use this equipment for other than intended use.
10. All servicing should be performed by qualified personnel only.
11. Allow the battery to charge for 24 hours before first use.

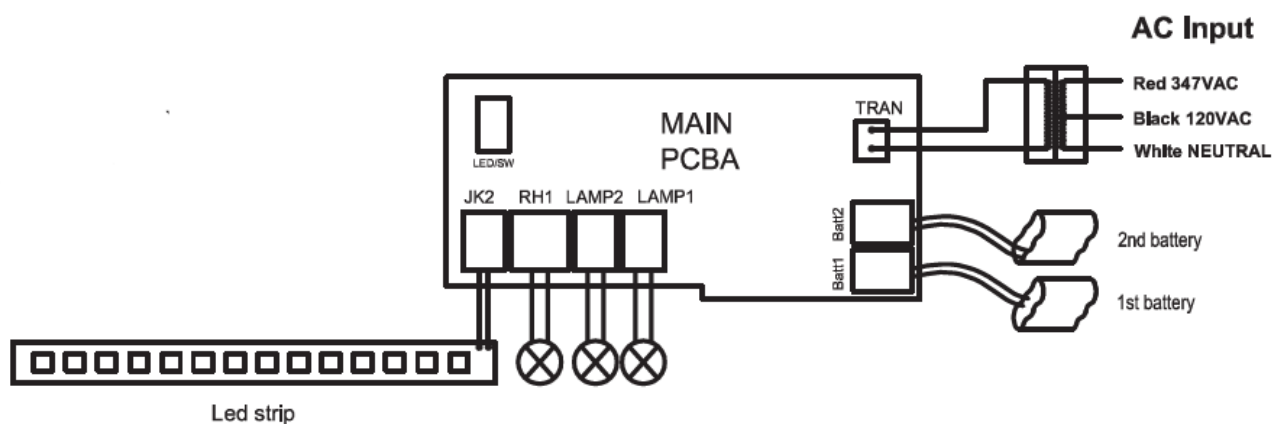


Use Flexible Conduit Only

SAVE THESE INSTRUCTIONS

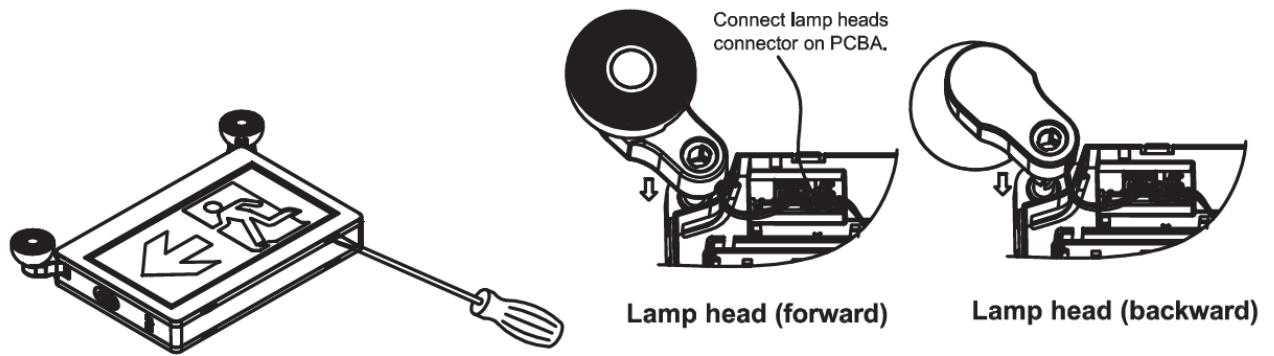
WIRING DIAGRAM

AC Wiring



- Connect the white wire to neutral.
- If using 120V, connect the black wire to the hot lead.
- If using 347V, connect the red wire to the hot lead.
- Cap the unused lead.

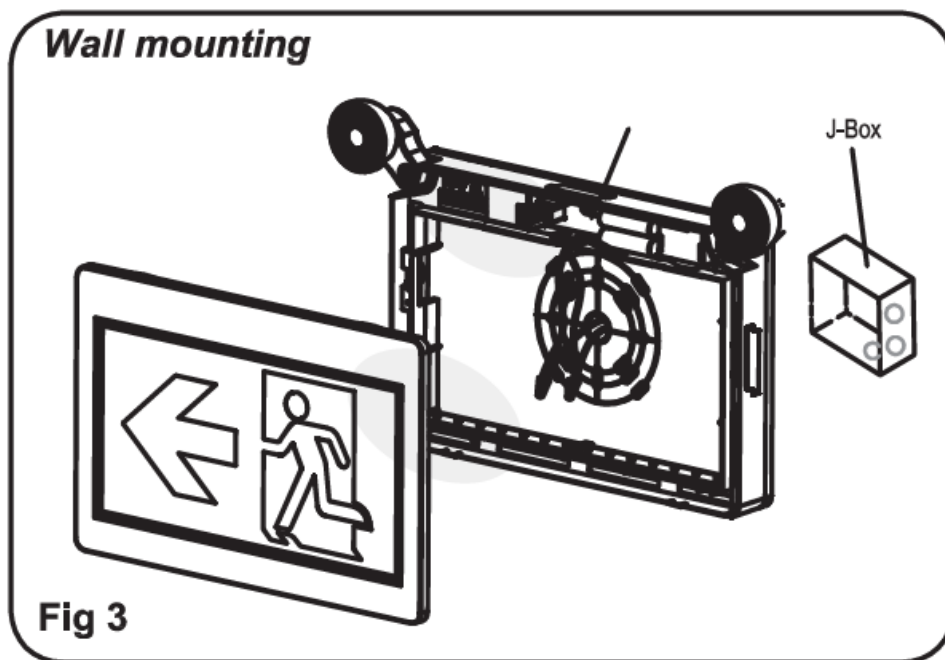
Assembly Lamp Heads



1. Open the front cover with flat screwdriver.
2. Insert the lamp heads at the corners of the main frame. Select the direction of lamp head before inserting.
3. Connect the male connector on the lamp head to the female connector on PCBA.

Mounting Instruction

The fixture is suitable for wall mounting, side mounting, ceiling mounting.



Side mounting

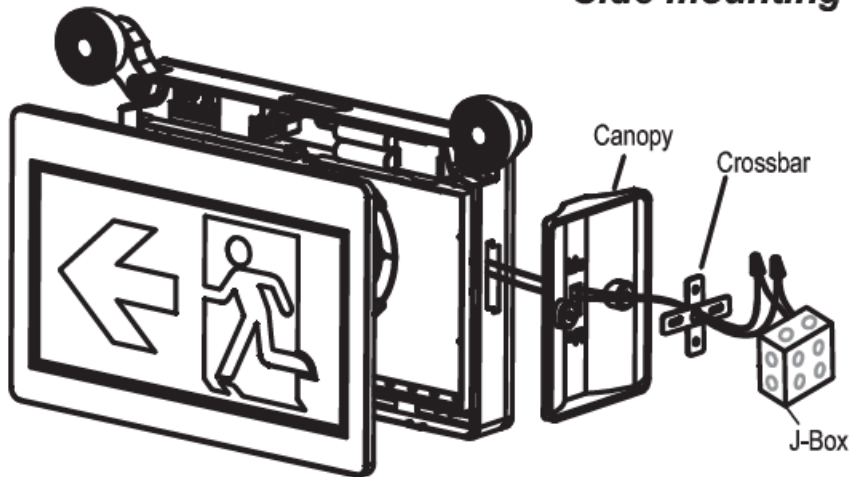


Fig 4

Ceiling mounting

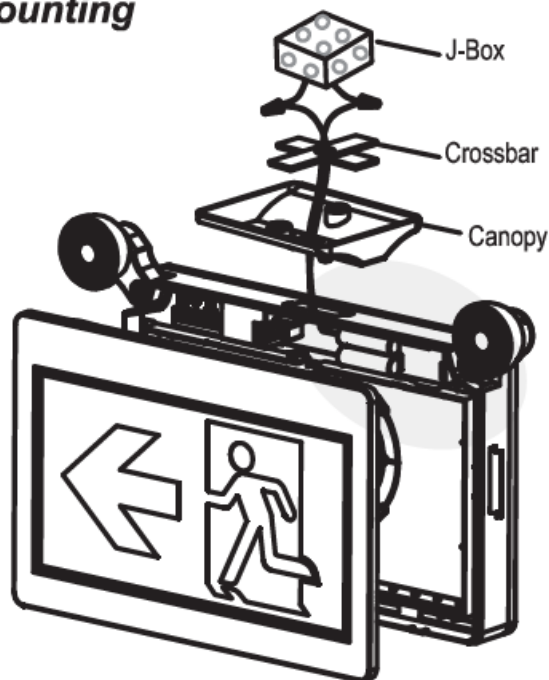


Fig 5

Canopy assembly



Insert canopy into housing at 20 degree angle and twist. Quick snap is now locked firmly.
CAUTION: Trying to remove canopy is locked in place may cause damage.

Fig 6

Change direction of pictogram

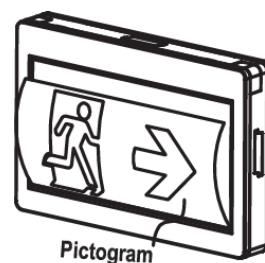
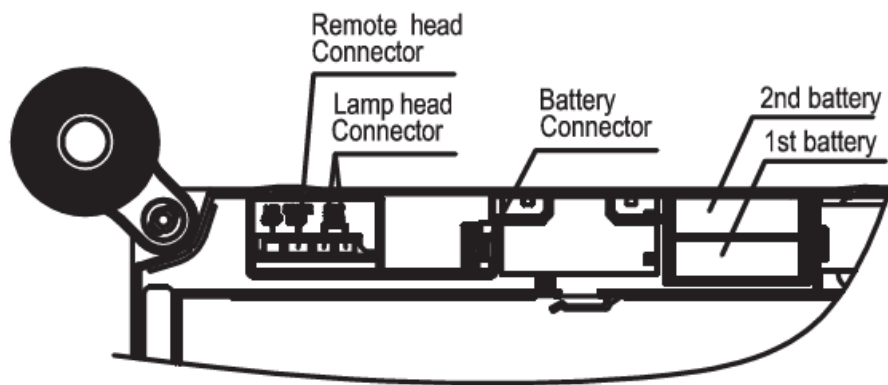


Fig 7

1. Open front cover and assemble 2 pcs lamp heads on the frame.
2. Knockout appropriate mount screw hole and cable hole, and mount the back plate on the wall after feeding the building AC supply cable into the back plate(see Fig 3).
3. For ceiling and side mounting purposes, remove the mounting hole cover on the top or side of the unit, and assemble the canopy (see Fig 4,5,6).

4. Attach the crossbar to the junction box, set the longer blade of the crossbar touching the J-Box.
5. Route the proper wires through the mounting hole out of the housing.
6. Make electrical connections inside the J-Box as a wiring diagram.
7. Push excess wire into J-Box, use screws to tighten the canopy to the crossbar so that canopy is securely fastened and tight against the wall.
8. Attach the battery connector to PC board, restore the front cover on the unit, and adjust the position of lamp heads as need.
9. If the pictogram direction assembled not suitable, the pictogram can be taken out for change direction or replaced the pictogram, and then inserted into the diffuser easily(See Fig 7).

Connecting Remote Heads



- Using 1pc battery, no remote capability.
- Using 2pcs battery with remote capability.
- Connect the remote head extension wire to the remote wire, yellow is positive), purple is negative(-). connect wires using wire nuts.

Remote capability reference below:

1. KDR-880-(HO)2RC has max. 3.6V 2W remote capabilities.
2. KDR-880-4RC has max. 3.6V 4W remote capabilities.

Application Picture



PACKAGE

Carton (Inch)	Qty / Carton	Net Weight / Carton	Gross Weight / Carton
14.37 x 9.76 x 6.14	2PC	5.51LBS	6.28LBS

Warranty

- Five-year warranty for the electrical parts and housing.
- Three-year warranty for battery.

[866-786-1117](tel:866-786-1117)
www.BeyondLEDTechnology.com

Due to continuous product improvement, information in this document is subject to change.

Documents / Resources

	<p>BEYOND H3 Running Man Combo Exit Sign [pdf] Instruction Manual H3, H3 Running Man Combo Exit Sign, Running Man Combo Exit Sign, Man Combo Exit Sign, Combo Exit Sign, Exit Sign, Sign</p>
---	---

References

- [BEYOND LED Technology - Top LED Lighting Distributor in Atlanta – Beyond LED Technology](#)

- [User Manual](#)

Manuals+, Privacy Policy

This website is an independent publication and is neither affiliated with nor endorsed by any of the trademark owners. The "Bluetooth®" word mark and logos are registered trademarks owned by Bluetooth SIG, Inc. The "Wi-Fi®" word mark and logos are registered trademarks owned by the Wi-Fi Alliance. Any use of these marks on this website does not imply any affiliation with or endorsement.