



BEYOND FIRE SJ03 Wireless Ignition System User Manual

[Home](#) » [BEYOND FIRE](#) » BEYOND FIRE SJ03 Wireless Ignition System User Manual 

Contents

- 1 Operation Manual of Beyondfire
- 2 Wireless Ignition System
- 3 1.The System
- 4 2.Specification & Parameters
- 5 3. Mobile APP
- 6 4. Panel Function Description of FireMaster[Transmitter]
- 7 5. Panel Function Description of FirePoint[Receiver]
- 8 6. Installation of FUSE to “The Ignition Head”[Crocodile Clip]
- 9 7.App operation steps
- 10 8.Restore of System
- 11 9.Troubleshooting
- 12 Guarantee Card
- 13 Documents / Resources
 - 13.1 References
- 14 Related Posts

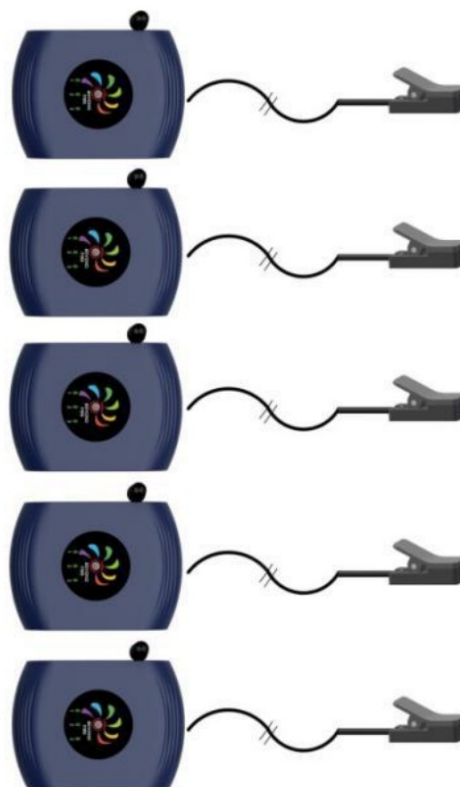


Wireless Ignition System

Operation Manual of Beyondfire



FireMaster



FirePoint

Ignition

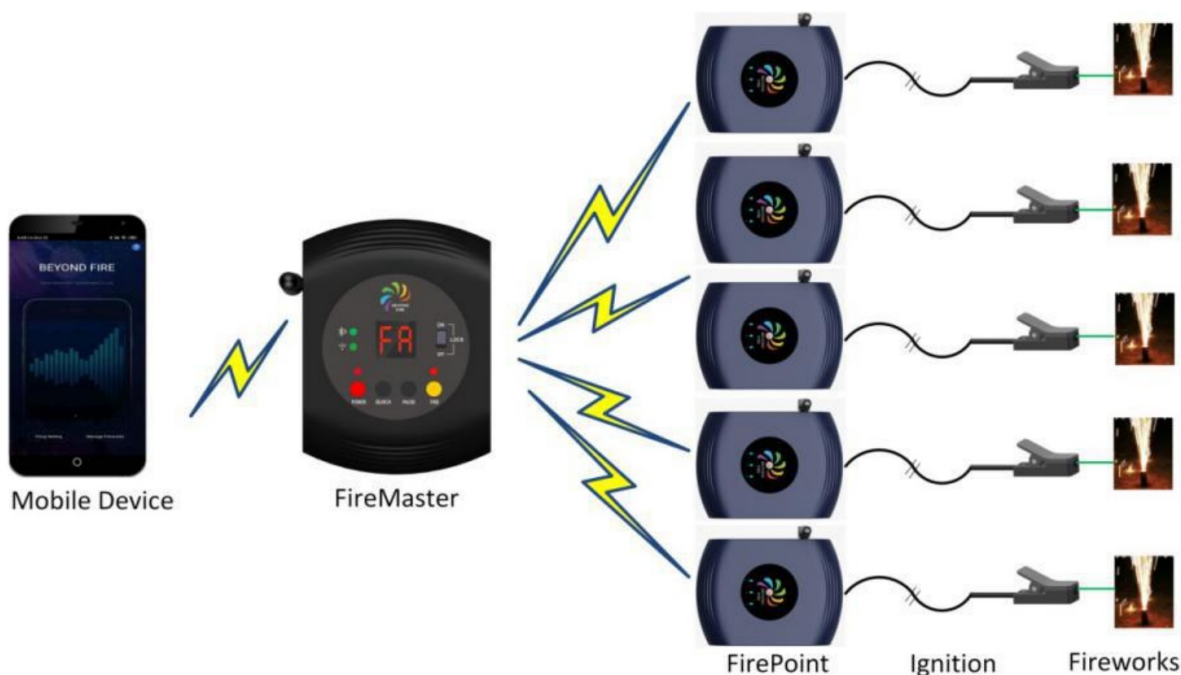
- ★ Please read this manual carefully before use.
- ★ This manual contains a warranty card. Please keep it properly.



Hunan Beyondfire Technologies Co.,Ltd.

1.The System

The wireless ignition system for fireworks of “**Beyondfire**”^[Trade Name] consists of mobile devices, FireMaster, FirePoint and ignition heads.



Mobile Device

FireMaster

FirePoint

Ignition

Fireworks

2.Specification & Parameters

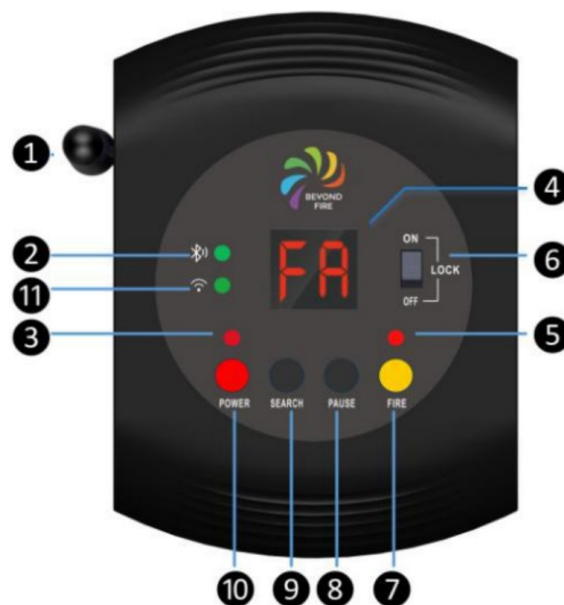
- The effective communication distance between “FireMaster” and “FirePoint” is from 50 meters to a maximum distance in an open ground / water surface without obstruction is 400 meters.
- “Mobile Device [Mobile Phone or Tablet] to the FireMaster” is 10 meters.
- The maximum number of FirePoint connections is 30, and the maximum number of Fireworks connections is 90.
- 4 LR6 AA 1.5V Alkaline batteries is recommended; standby current < 50mA.
- The optional “DC3.5 Patch Plug” is compatible with traditional “Electric Match Ignition”.

3. Mobile APP

Visit www.beyondfire.com, then download and install Beyondfire APP on Android™ or Apple® devices. The APP needs to be enabled: bluetooth, location, storage read and write rights.

For operation instructions of the Beyondfire application, please refer to the “?” help document on the upper right corner of the main screen on APP. For more information, visit www.beyondfire.com.

4. Panel Function Description of FireMaster^[Transmitter]



1 Unit

Carries an “External 2.4g Antenna”.

2 Comunciation light

Mobile device communication working indicator light.After starting up, it will be always on.
When the APP is connected successfully, it will enter a slow flash state.

3 Power indicator light

Stays in red mode after starting up. When the battery power is low, it flashes to remind you to replace the batteries.

4 2 digital display module

5 Indicator light of “Lock Switch” and also indicator light of ignition “Safety Switch”.

6 The “Lock Switch”

Its means functions is as a safety feature in preventing accidental ignition. When set to OFF state, it will lock the system from accidental ignition. While, Lock Switch does not affect APP to issue ignition command.

7 Ignition “FIRE” button

When the Lock switch moves to the ON position, the Lock switch indicator light will be ON. At this time, long press the Fire ignition button for 3 seconds above, and the digital tube displays FA, and the Fire Master will issue all ignition command. During normal running, please turn the Lock switch to the OFF position to avoid accidental ignition.

8 PAUSE button

During discharge, press it to pause.

9 SEARCH button

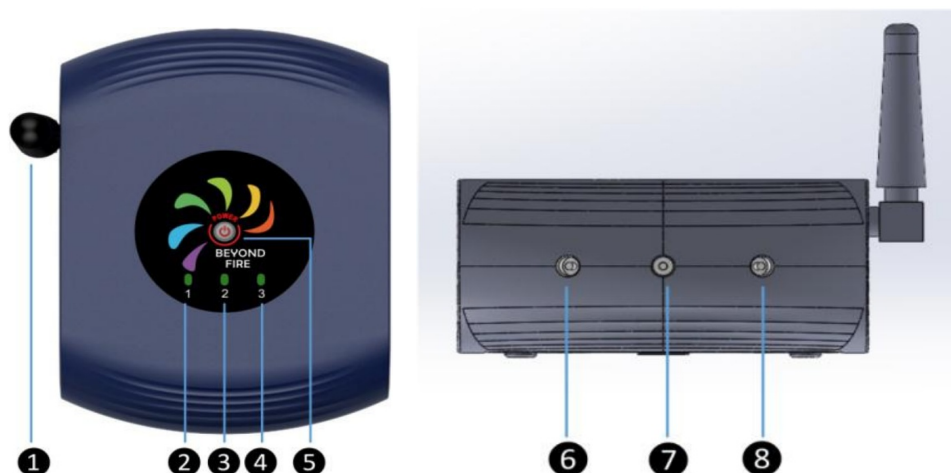
Short press this button then the number of connected Fire Point is displayed.

10 POWER button

Long press 2 seconds to start up, while short press to shut down.

11 The working indicator light of the wireless communication module of the equipment.

5. Panel Function Description of FirePoint^[Receiver]



1 External 2.4g antenna.

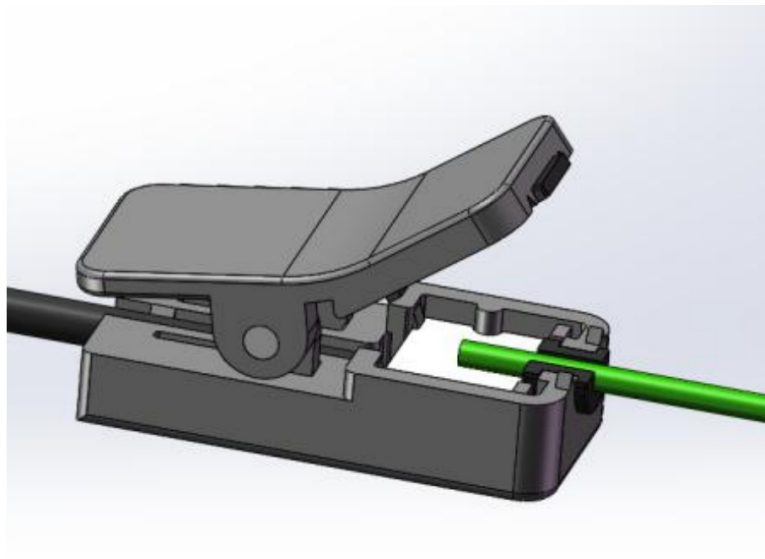
2 3 4 Corresponding to the 1-2-3 state indicator light of ignition channel. If the ignition head is not connected or the heating wire of the ignition head is damaged, the lights will not be on. When the ignition head is connected, the light turns green, while in the state of ignition, it turns red.

5 POWER button. Long press 2 seconds to start up, while short press to shut down. When the battery is low, the light flashes to remind you to replace the batteries in time.

6 7 8 Corresponding to the 3-2-1 channel DC block interface of the external ignition head. When FireMaster issues the “FIRE ALL” command, If all 3 channels are connected with ignition heads, the ignition will be in the sequence of channel 1-channel 2-channel 3.

6. Installation of FUSE to “The Ignition Head”[Crocodile Clip]

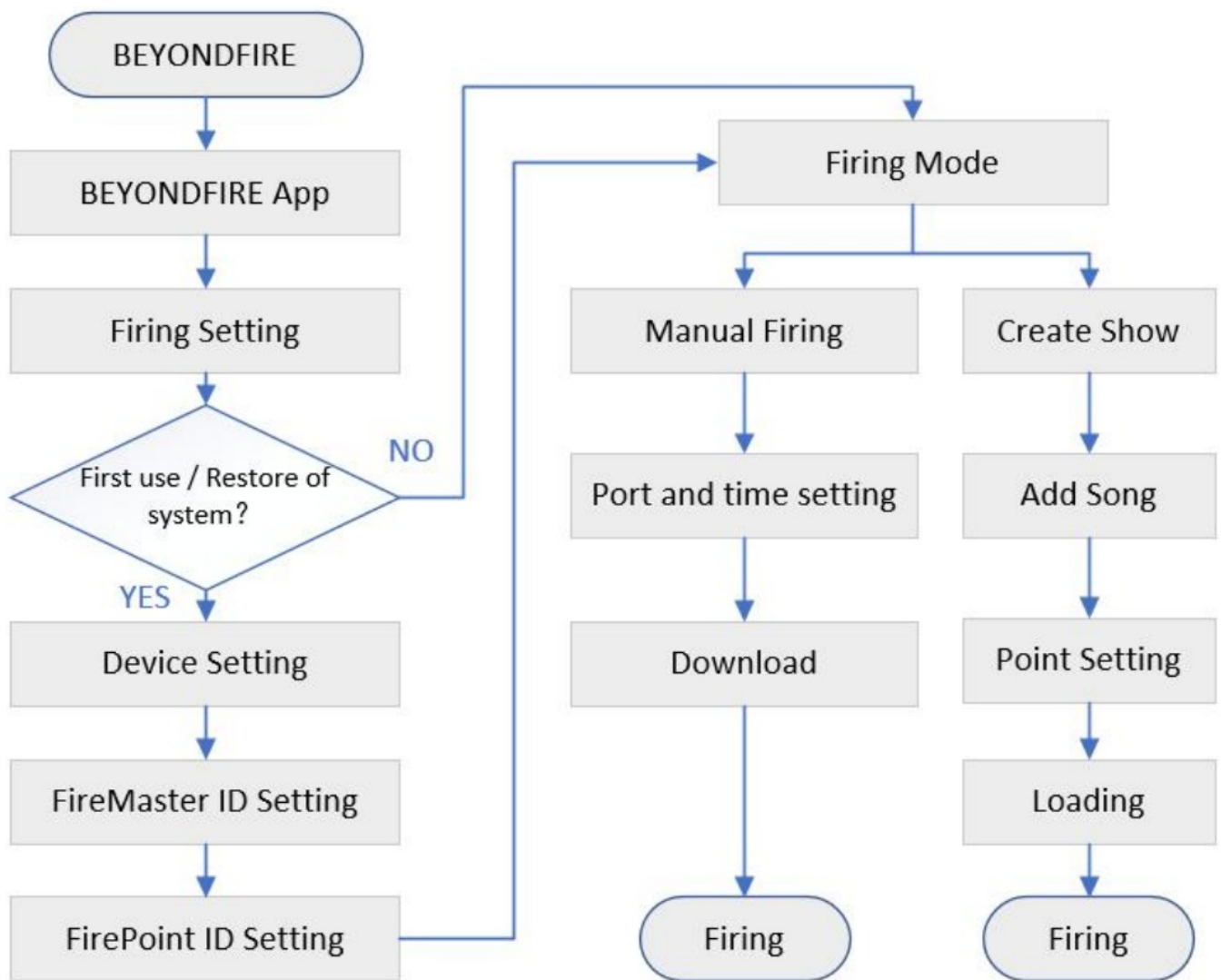
Place the green lead in the ignition clip and try your best to put the lead end in the center of the heater.



Note

- After each ignition, the hot wire will adhere to the carbide and residue generated by fuse combustion. Use a fine brush to clean the residue on the heating plate, otherwise it may affect the next ignition.

7.App operation steps



8.Restore of System

- 1) FirePoint: Within 15 seconds after starting up, long press the power button for 2 seconds, and the three green lights of the ignition head are in flashing state. Please press the power button again within 5 seconds, and the green lights will flash out in turn in order of 3-2-1, then the factory settings are restored successfully.
- 2) FireMaster: Within 15 seconds after starting up, long press the power button for 2 seconds, and the nixie tube displays P1 flashing state. Please press the power button again within 5 seconds, and it displays P2 characters for 2 seconds and then it goes out. Then the factory settings are restored successfully.
- 3) After the device is restored to factory settings, the ID shall be reset before normal use.

9.Troubleshooting

Problem	Reason	Solution
Fail to start up	1. Incorrect installation of battery polarity 2. Low power of batteries	1. Remove the batteries and install the battery compartment with correct polarity. 2. Replace new batteries
Power light flashes after power on	1. Low power of batteries 2. Wireless module's failure to read data	1. Replace new batteries 2. Restore the factory settings, and reset the address according to the initial address modification steps.
FirePoint power on then the light flashes green and automatically shuts down	FirePoint is designed with self-check function when power on. When detecting the internal safety devices have a fault, it automatically shuts down and can not be used to ensure the safety of the user.	There is a safety device damage, so please stop using and send it to repair.
The APP cannot connect the FireMaster device by Bluetooth	1. Bluetooth function of mobile device is not open. 2. The mobile device is too far away from FireMaster device.	1. Turn on the bluetooth function of mobile device. 2. Adjust the distance between the mobile device and the FireMaster device to less than 10 meters.
The FirePoint device is not connected or is not connected reliably	1. FirePoint device is too far away from FireMaster device. 2. The wireless communication of this device adopts 2.4g band. Too many surrounding devices using 2.4g band will cause mutual interference and affect the normal communication.	1. Adjust the distance between FirePoint and FireMaster devices to less than 50 meters. 2. Turn off other 2.4g devices that may cause interference. Adjust the distance between the wireless ignition system and other 2.4g devices to avoid mutual interference.
It cannot successfully light the fireworks	1. The DC plug of ignition head is loose or not inserted in place. 2. The firework lead is not in contact with the heating plate or electric arc. 3. Check that the FirePoint battery must be LR6 alkaline. 4. Low power of batteries 5. Excessive residue on the heating plate.	1. Re-insert the plug. 2. Reposition the lead in the center of the heating plate or arc ignition column. 3. Replace new batteries. 4. Clean the residue on heating plate.

Safety Tips:

- 1) This product should pay attention to moisture-proof, water-proof, and the safety distance from fireworks should be controlled at more than 2 feet, which is prohibited burning and suitable for personal consumption.
- 2) This product contains sharp parts and high temperature heating parts, please avoid accidental injury caused by the wrong operation of minors.

Notes

- 1) This product uses 1.5V AA alkaline batteries. Please do not leave it outside for a long time in low temperature. Please shut it down when not in use and replace batteries when in low power.
- 2) The copyright of the products and related products belongs to Hunan Beyond fire Technologies Co., Ltd. All rights are reserved.

3) The company reserves the right to modify the manual operation without prior notice. For the latest version of relevant documents, please visit www.beyondfire.com.

4) Changes or modifications not expressly approved by the party responsible for compliance could void your authority to operate the equipment.

Warranty and instructions

▲ We sincerely thank you for choosing this product. As a user of this company, you will get the good quality after-sale service provided by our company.

▲ The warranty period of the product is one year. If there is a quality problem within seven days, the company can change the product of the same model.

▲ During the warranty period, due to the hardware failure caused by the product itself, the company will provide the customer with free maintenance service. Please do not dismantle the machine for repair.

Radiation Exposure Statement

The device has been evaluated to meet general RF exposure requirement.

The device can be used in portable exposure condition without restriction.

★ Any of the following circumstances shall not be within the scope of warranty service:

1 improper handling, use, management, maintenance to damage, or artificial damage;

2 The product is disassembled, modified or repaired without authorization;

3 Damage caused by external causes (lightning, power supply, etc.);

4 The damage caused by incorrect installation or use of the user;

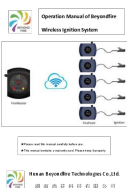
Products that do not belong to the warranty scope will be charged for maintenance services.

★ Please show the purchase voucher and the warranty card when maintenance is required, otherwise it will not be processed.

Guarantee Card

Product name	The serial number	
Purchase date	Contact phone number	
Address:		
Customer response:		
Actual fault handling		Maintenance date

Documents / Resources

	<p>BEYOND FIRE SJ03 Wireless Ignition System [pdf] User Manual 01000SJ03M, 2ARNP-01000SJ03M, 2ARNP01000SJ03M, 01000SJ03P, 2ARNP-01000SJ03P, 2ARNP01000SJ03P, SJ03, Wireless Ignition System, Ignition System, SJ03, Wireless Ignition</p>
---	--

References

-  [_____](#)

Manuals+.