

BETOWEY X2 Helmet Bluetooth Intercom Instruction Manual

Contents

- 1 X2 helmet Bluetooth intercom instruction manual**
 - 1.1 1 Introduction**
 - 1.1.1 1.1 Product overview**
 - 1.1.2 1.2 Product indication chart**
 - 1.1.3 1.3 Product Features**
 - 1.2 2 Key Function and Operation**
 - 1.2.1 2.1 On/off**
 - 1.2.2 2.2 Telephone Function**
 - 1.2.3 2.3 Music Control**
 - 1.2.4 2.4 Volume Adjustment**
 - 1.2.5 2.5 FM radio**
 - 1.2.6 2.6 Language prompt tone switching**
 - 1.2.7 2.7 Music sharing**
 - 1.2.8 2.8 Voice awakening**
 - 1.3 3 . Pairing Operation Method**
 - 1.3.1 3.1 Pairing with mobile phone Bluetooth**
 - 1.3.2 3.2 Two Bluetooth walkie-talkies full duplex paired intercom**
 - 1.3.3 3.3 Start/disconnect Bluetooth intercom between two helmets**
 - 1.3.4 3.4 Switch between multiple modes**
 - 1.4 4 Function priority**
 - 1.5 5. Installation method of interphone (choose 1 from 2)**
 - 1.5.1 5.1 Method 1: Install the host with clips.**
 - 1.5.2 5.2 Method 2: Use hook and loop to install the host.**
 - 1.5.3 5.3 Headphone cable plug direction**
 - 1.5.4 5.4 Quickly remove the Bluetooth intercom from the helmet.**
 - 1.6 8 Technical parameters of products**
 - 1.7 9 . charging instructions**
 - 1.8 10 Matters needing attention**
- 2 Documents / Resources**
 - 2.1 References**
- 3 Related Posts**

X2 helmet Bluetooth intercom instruction manual

1 Introduction

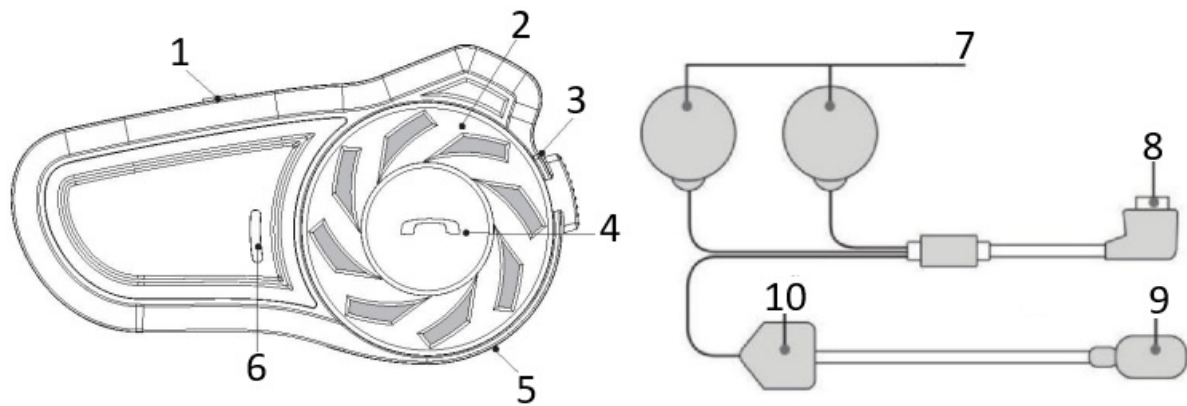
1.1 Product overview

X2 is a helmet-mounted Bluetooth walkie-talkie specially designed for motorcycle riders, which meets people's functional requirements such as intercom, answering phone calls, listening to music, listening to FM radio and receiving GPS navigation voice prompts during riding, and can have a clear, safe and comfortable experience during riding.

X2 has v5.1 Bluetooth, with stable system operation, dual intelligent noise reduction, low power consumption and strong pickup effect, and supports the connection of multiple devices. X2 is a high-tech Bluetooth product that is

stylish, compact, energy-saving and environmentally friendly, and has humanized design.

1.2 Product indication chart



1. On/off key
2. Knob
3. Charging input interface
4. Multifunction key
5. Headphone input interface
6. LED indicator light
7. Horn
8. Headphone plug
9. Microphone
10. Butterfly sticky board

1.3 Product Features

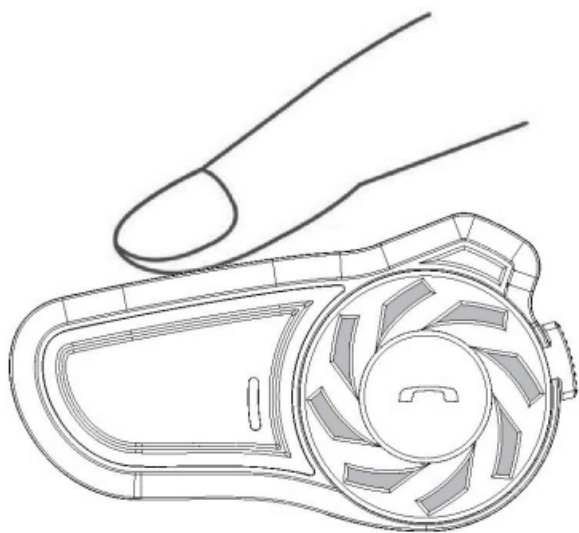
- (1), V5.1 Bluetooth, DSP processing, super CVC noise reduction, ultra-low power consumption, fast pairing, long working and standby time;
- (2), You can answer, reject and hang up calls within a visible range of 10 meters, and support the connection of 2 mobile phones;
- (3), 40mm tuning horn diaphragm, shocking music;
- (4), Full duplex intercom with a distance of 800 meters between two Bluetooth walkie-talkies in the open visual range. After intercom is enabled, the mobile phone is still in standby state, ensuring that no calls are missed;
- (5), Automatic answer, support the last dial number redial;
- (6), FM radio;
- (7), Multilingual prompt tone;
- (8), Music sharing; Voice awakening;
- (9), Can realize any switch between mobile phone call, intercom, stereo music and FM radio;
- (10), Connect 2 other devices (mobile phone, MP3, GPS) via Bluetooth;
- (11), Support voice communication at the speed of 120km/h;
- (12), The waterproof and sunscreen design of the whole machine is durable, and the waterproof grade reaches IP65;

Applicable People:

Motorcycle and bicycle riders; Ski lovers; Takeaway rider; Electric car people; Construction and mining workers; Fire fighting, traffic police, etc.

2 Key Function and Operation

2.1 On/off

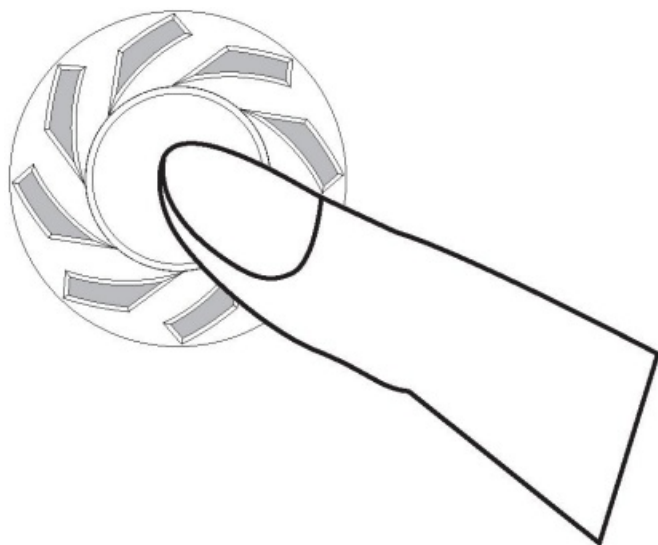


Start-up: press the on-off key for 2 seconds to hear the start-up prompt, and after the blue light flashes twice, the red and blue lights flash alternately to enter the pairing mode;

Shutdown: press the on-off key for 4 seconds, and when you hear the shutdown prompt, the red light flashes once to complete the shutdown;

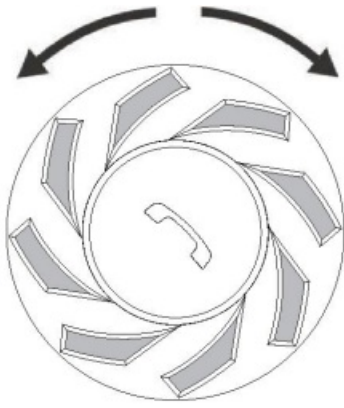
Reset: in the power-on state, press and hold the power-on key for 8 seconds;

2.2 Telephone Function



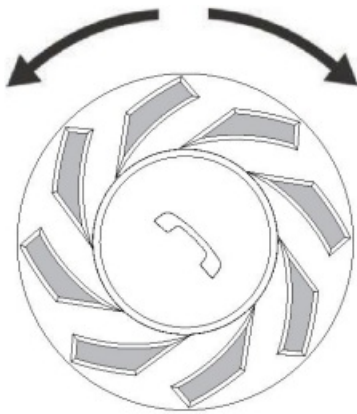
- (1) Answer the incoming call: When there is an incoming call, press the function key briefly to answer the call;
- (2) Automatic Answer: When there is no operation after the incoming call rings for 8 seconds, the earphone will automatically answer the incoming call; When Bluetooth is disconnected, double-click the power-on key and flash the blue light twice to turn on automatic answering, and flash the red light twice to turn off automatic answering;
- (3) Refuse to answer: press the multifunction key for 3 seconds just after hearing the ringing of the incoming call, and then let go when you hear the "drip" sound;
- (4) End the call: During the mobile phone call, short press the multifunction key to end the call;
- (5) Last code redial: In standby mode, quickly double-click the power-on key to automatically dial the last number;

2.3 Music Control



- (1) Play/Pause: In the Bluetooth connection mode of mobile phone, pressing the multifunction key once is the control of music play/pause;
- (2) Forward: Turn the knob counterclockwise to select the next piece of music;
- (3) Backward: Turn the knob clockwise to return to the previous music;

2.4 Volume Adjustment



Turn the knob counterclockwise and hold it down to reduce the volume; turn the knob clockwise and hold it down to increase the volume;
 Let go when the volume is adjusted to the right time;
 There is an alarm tone for the highest or lowest volume;

2.5 FM radio

- (1) Turn on the radio: in standby mode, quickly double-click the multifunction key to start the FM radio;
- (2) After turning on the FM radio, quickly turn the knob and release your hand to tune and select channels, and keep turning to select different channels (note that turning the knob without releasing your hand will enter the volume adjustment mode);
- (3) Turn off the radio: double-click the multifunction key quickly, and the earphone will switch back to its previous state;

Note:

1. When the indoor signal is weak, in order to make the FM radio work best, you can try to turn on the FM radio near the window or in the outdoor open area;
2. When entering the radio mode, when there is an incoming call, the headset will automatically disconnect the radio, connect the mobile phone, and automatically restore the radio status when the call is over;

2.6 Language prompt tone switching

In the power-on state, press and hold the power-on key and the rotary knob key at the same time to switch the language prompt tone, and switch to the next language each time.

2.7 Music sharing

(1) Music sharing is turned on: After Host A is connected to Bluetooth, Host A will be connected to Host B through intercom pairing. After intercom is connected, the intercom will be disconnected, and music will be played. Press and hold the function key of Host A for 2 seconds, and sharing will be successful after hearing the prompt.

(2) Music sharing is turned off: press and hold the function key of host A for 2 seconds to turn off music sharing;

2.8 Voice awakening

In the power-on state, after connecting the Bluetooth of the mobile phone, press and hold the function key for 1 second, accompanied by a "drip" prompt;

3 . Pairing Operation Method

3.1 Pairing with mobile phone Bluetooth

(1) Put the helmet Bluetooth walkie-talkie and the mobile phone within 1 meter;

(2) Matching steps:

1) Power-on state: press and hold the power-on key+function key for 4 seconds to hear the power-on prompt tone. After the blue light flashes twice, the red and blue lights flash alternately and enter the Bluetooth waiting pairing state;

2) Search for Bluetooth: Turn on the Bluetooth function of the mobile phone, search for nearby Bluetooth devices, and select "X2" to connect and pair. After the pairing is successful, it will be accompanied by the prompt "Bluetooth connected", and the connection is successful.

Note: If there is a record of pairing with this mobile phone, the walkie-talkie will be automatically connected to the Bluetooth of the mobile phone after the phone is turned on, and there is no need for repeated pairing (provided that the Bluetooth of the mobile phone is turned on).

3.2 Two Bluetooth walkie-talkies full duplex paired intercom

(1) Put two helmet Bluetooth walkie-talkies within 1m apart;

(2) Matching steps:

1) Power-on state: press and hold the power-on key+function key for 4 seconds to hear the power-on prompt tone. After the blue light flashes twice, the red and blue lights flash alternately and enter the Bluetooth waiting pairing state;

2) Intercom pairing: When Bluetooth is waiting for pairing, press the power-on button of any one of them, and there will be a 'intercom search' prompt tone, and it will enter the intercom search mode. After waiting for a few seconds, it will automatically be paired successfully, and the blue light of both machines will flash slowly at the same time, accompanied by the intercom pairing success prompt tone, and the pairing will be successful.

note:

1. When two helmet Bluetooth headsets are paired successfully, there is no need to pair them repeatedly. At the same time, after being turned on, you can talk back by pressing the power-on key in standby mode.

3.3 Start/disconnect Bluetooth intercom between two helmets

Start: In standby mode, two paired helmet Bluetooth headsets will be automatically connected by short pressing the power button. After success, the voice prompts "intercom connected", and then the duplex intercom call can be started.

End: When you want to end the Bluetooth intercom call, you can hear a sound of "intercom disconnected" by pressing the on key for a short time. At this time, the intercom is disconnected, accompanied by a slow flashing of

the blue light; If you want to continue to connect the intercom, press the on key briefly and hear a sound of “intercom connected”, and the Bluetooth intercom will be reconnected.

pay attention to In the process of intercom, it is inevitable to be disconnected due to the influence of environmental factors. There is an automatic connection function within five minutes of disconnection. If you can't connect again, you can manually press the power button once to conduct an intervention search and pairing.

3.4 Switch between multiple modes

(1) Switch between intercom mode and music /FM radio mode:

When in intercom mode, press the switch button briefly, you can hear the “beep” prompt, quit intercom, and then switch between music and FM radio;

(2) Every time you double-click the multifunction key, you can turn on or off the FM radio. If you need to enter the intercom again, you need to press the turn-on key briefly, and you can hear the “di” prompt to enter the intercom search. After the pairing is successful, you will automatically enter the intercom mode.

(3) When two walkie-talkies are in intercom mode, if the walkie-talkies are also connected to the mobile phone, when a call comes in, the intercom will be automatically disconnected, switched to the incoming call answering state, and automatically resumed after the call is finished; It takes about 5 seconds to automatically switch back from the mobile phone call state to the Bluetooth intercom state.

4 Function priority

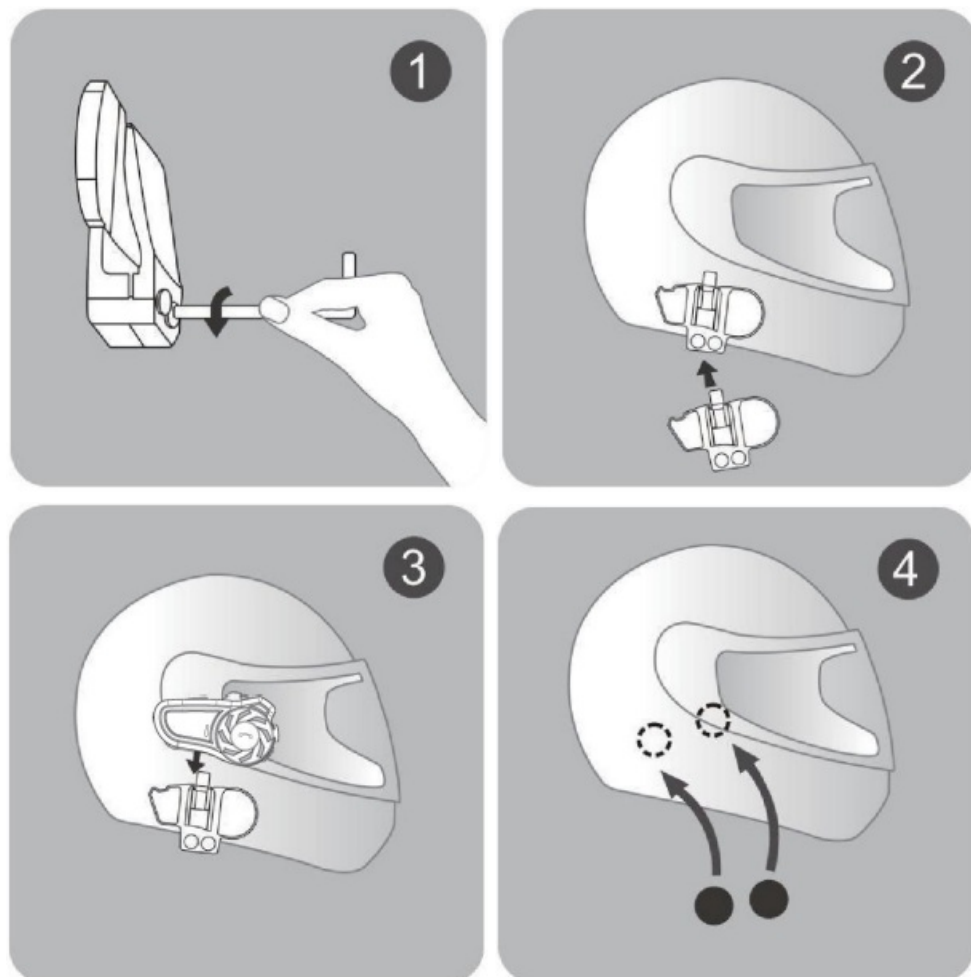
Level 1: Telephone

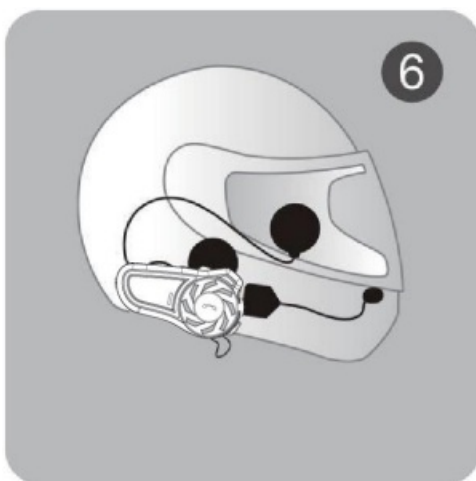
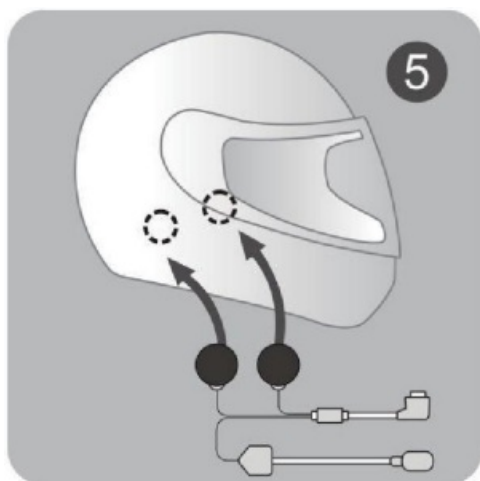
Level 2: Bluetooth intercom

Level 3: Music /FM radio

5. Installation method of interphone (choose 1 from 2)

5.1 Method 1: Install the host with clips.

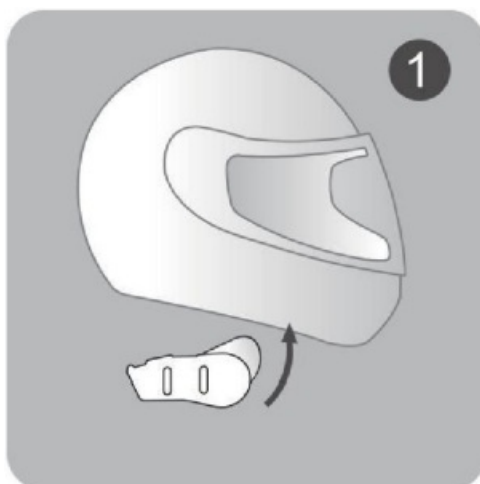




- (1) Use the attached screwdriver to loosen the screw of the back clip, so that the clip can be opened to a proper extent, which is convenient for inserting into the lower edge of the helmet.
- (2) Open the helmet liner, insert the clip into the appropriate position on the left side of the helmet and tighten the screw (too tight will also damage the clip or helmet).
- (3) Slide the Bluetooth walkie-talkie into the earphone clip slot to ensure that it is firmly locked.
- (4) Open the helmet lining (ear position), clean the EPS surface of the helmet, and stick a Lagan rot paste on the left and right sides (it needs to be installed near the helmet ear position to achieve the best volume and sound effect).
- (5) Stick the horn on the fixed surface of hook and loop (the horn comes with hook and loop hook surface, and the horn with short line should be installed near the host side), fix the microphone at the same time, and properly arrange the helmet lining and headphone cable.
- (6) Insert the earphone plug into the earphone jack of the interphone, and tie up the earphone cable to complete the installation.

5.2 Method 2: Use hook and loop to install the host.

You can directly use the hook and loop to install the walkie-talkie on the edge of the helmet. Please refer to the following pictures.





(1) separate hook and loop's hook surface and matte surface, first paste the hook surface on the hook and loop clip, then insert the hook and loop clip into the main machine, hold the main machine in hand, choose the appropriate installation position on the helmet (pay attention to the correct orientation of the machine), and paste hook and loop's matte surface to this position after selecting the position.

(2) Remove the hook and loop clip (with hook and loop hook surface attached) from the main machine, and paste the quasi-attached hook and loop rough surface with the hook surface to ensure its firmness.

(3) Slide the intercom host into the slot of the hook and loop clamp, and lock it tightly.

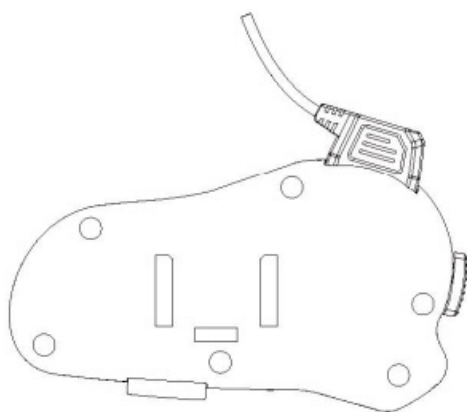
(4) Open the helmet lining (ear position), clean the EPS surface of the helmet, and stick a LA9 membrane patch on the left and right sides (please install it near the ear position to achieve the best volume and sound effect).

(5) Stick the horn on the fixed hook and loop surface (the horn comes with hook and loop hook surface, and the horn with short line should be installed near the host side), fix the microphone at the same time, and arrange the helmet lining and earphone line.

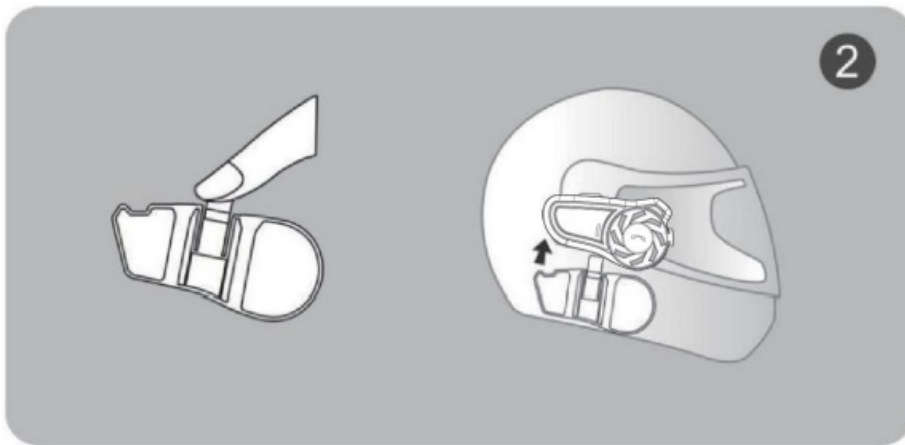
(6) Insert the earphone plug into the earphone jack of the interphone, and tie up the earphone cable to complete the installation.

5.3 Headphone cable plug direction

The headphone cable interface of the main engine has a fixed direction, and the plug should be inserted in place.

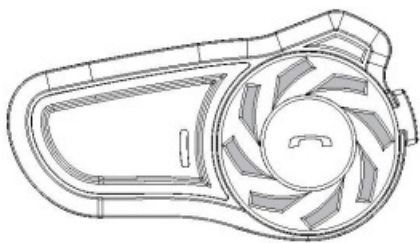


5.4 Quickly remove the Bluetooth intercom from the helmet.

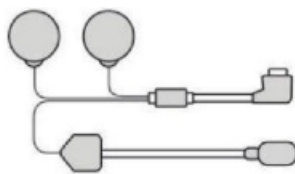


Unplug the headphone cable first, then press the fixing buckle in the middle of the back clip with one finger (push it to the helmet side) to separate the hook of the back clip from the main unit, and at the same time push the main unit upward to make it slide out of the back clip smoothly to complete the disassembly.

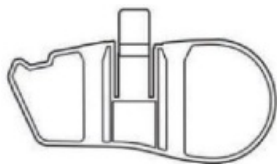
X2 List of Articles



Bluetooth host



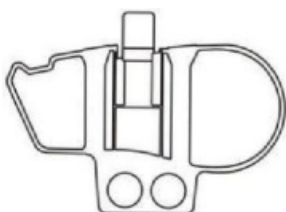
Headphones & Microphones



Hook and loop clamp



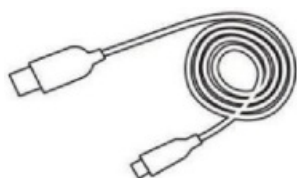
Hook and loop fasteners



Clip



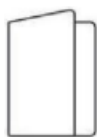
Horn hook and loop



Data wire; data cable



Screwdriver



Instructions

1. Bluetooth host X1
2. Headphones & Microphone x1
3. Hook and loop clamp x1
4. hook and loop x2
5. Clip x1
6. Horn hook and loop x4
7. Data line x1
8. Screwdriver x1
9. Instruction x1

8 Technical parameters of products

Working distance: 800 meters

Operating frequency 2402-2480MHz

Bluetooth version: Bluetooth 5.1

Support Bluetooth protocols: A2DP and AVRCP

Support Bluetooth function: Bluetooth headset with automatic detection function and hands-free profile.

Scope of operation: mobile phone can reach up to 10 meters.

Battery type: 700mAh rechargeable lithium polymer

Standby time: up to 300 hours

Talking time: talking/listening to music on mobile phone for up to 18 hours; Talk for up to 15 hours

Charging time: about 2 hours

Power adapter: DC5V1A (optional)

Charging interface: TYPE-C interface.

Working temperature: 41F-104F(5°C-40°C)

Storage temperature: -4F-122F(-20°C~50°C)

9 . charging instructions

1) Before using the Bluetooth walkie-talkie, please charge the walkie-talkie with the special charging cable delivered. The small TYPE-C interface on the charging cable is connected to the USB charging interface of the Bluetooth walkie-talkie, and the large USB connector on the charging cable is connected to the following charging port for power supply:

- A. USB interface of the computer;
- B, the output is DC 5V mobile power supply;
- C. USB power adapter with DC 5V output.

2) When charging, the red LED is always on, and when fully charged, the red light goes out slowly. It takes about 2.5 hours from low battery to full battery.

10 Matters needing attention

- (1) If the earphone is not used for one month or more, please charge the earphone once every two months in order to protect the lithium battery of the earphone;
- (2) The suitable storage temperature of this product is -20 to 50. Please do not store it in an environment with too high or too low temperature, otherwise the service life of the product will be affected.
- (3) Do not expose this product to open flames to avoid explosion;
- (4) The two screws of the earphone cable plug buckle can be opened and tightened by themselves, so as to fix the earphone. No other host screws can be opened by themselves, so as to avoid short circuit of the motherboard or battery damage, which will affect normal use. Please pay attention.


FCC Requirement

Any changes or modifications not expressly approved by the party responsible for compliance could void the user’s authority to operate the equipment.
This device complies with Part 15 of the FCC Rules. Operation is subject to the following two conditions:
(1) this device may not cause harmful interference, and
(2) this device must accept any interference received, including interference that may cause undesired operation.

Note: This equipment has been tested and found to comply with the limits for a Class B digital device, pursuant to Part 15 of the FCC Rules. These limits are designed to provide reasonable protection against harmful interference in a residential installation. This equipment generates, uses, and can radiate radio frequency energy, and if not installed and used in accordance with the instructions, may cause harmful interference to radio communications. However, there is no guarantee that interference will not occur in a particular installation. If this equipment does cause harmful interference to radio or television reception, which can be determined by turning the equipment off and on, the user is encouraged to try to correct the interference by one or more of the following measures:

- Reorient or relocate the receiving antenna.
- Increase the separation between the equipment and receiver.
- Connect the equipment into an outlet on a circuit different from that to which the receiver is connected.
- Consult the dealer or an experienced radio/TV technician for help.

Documents / Resources

	<p>BETOWEY X2 Helmet Bluetooth Intercom [pdf] Instruction Manual</p> <p>X2, X2 Helmet Bluetooth Intercom, Helmet Bluetooth Intercom, Bluetooth Intercom, Intercom</p>
-------------------------------------------------------------------------------------	---------------------------------------------------------------------------------------------------------------------------------------------------------------------------------------

References

- [User Manual](#)

[Manuals+](#), [Privacy Policy](#)

This website is an independent publication and is neither affiliated with nor endorsed by any of the trademark owners. The "Bluetooth®" word mark and logos are registered trademarks owned by Bluetooth SIG, Inc. The "Wi-Fi®" word mark and logos are registered trademarks owned by the Wi-Fi Alliance. Any use of these marks on this website does not imply any affiliation with or endorsement.