



Beta Precision Digital Electronic Ruler Instruction Manual

[Home](#) » [Beta](#) » Beta Precision Digital Electronic Ruler Instruction Manual 

Contents

- [1 Beta Precision Digital Electronic Ruler](#)
- [2 MICROSCOPE ASSEMBLY](#)
- [3 BASIC INSTRUCTIONS](#)
- [4 Documents / Resources](#)
 - [4.1 References](#)
- [5 Related Posts](#)



Beta Precision Digital Electronic Ruler



The Beta Precision Digital Electronic Ruler is a non-contact measuring tool that can measure large and small distances on various surfaces such as films, plates, dies, prints, and circuit boards. The ruler comes with a digital readout and a microscope assembly, which can be used to measure narrow lines within the eyepiece of the microscope.

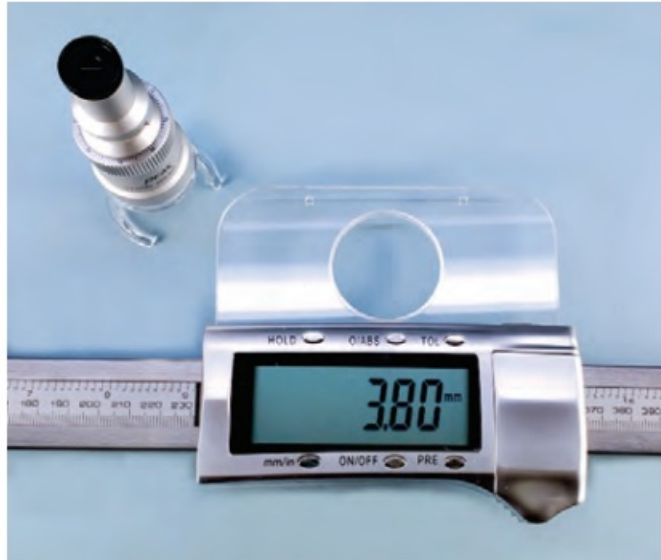
- The clear plastic plate attached to the digital readout has a large hole to carry the Beta DMR microscope. The inside edge of the mounting hole has a groove that matches the base of the microscope.
- To assemble, squeeze the plastic base of the microscope and press one edge into the groove. Then, move the opposite edge into place. When properly seated, the microscope will be firmly held in place and will not fall out even if the assembly is inverted.
- The microscope and digital readout should look like this after assembly. To remove the microscope when storing the ruler, squeeze the base and lift the microscope out.
- Optional microscopes of 25x, 75x, and 100x are available. Specify inch or metric reticles for the microscope to suit your needs. Contact us for further information at www.betascreen.net

Beta Precision Digital Electronic Ruler BASIC INSTRUCTIONS

1. Press the ON/OFF button to activate the display.
2. Bring the image into sharp focus by turning the large knurled ring.
3. Slide the readout close to the end position and place in final position as shown.
4. Rotate the upper black ring to bring the reticle into sharp focus.
5. Turn the lower black ring to align the reticle.

MICROSCOPE ASSEMBLY

- The clear plastic plate attached to the digital readout has a large hole to carry the Beta DMR microscope.
- The inside edge of the mounting hole has a groove to match the base of the microscope.



Squeeze the plastic base of the microscope as shown



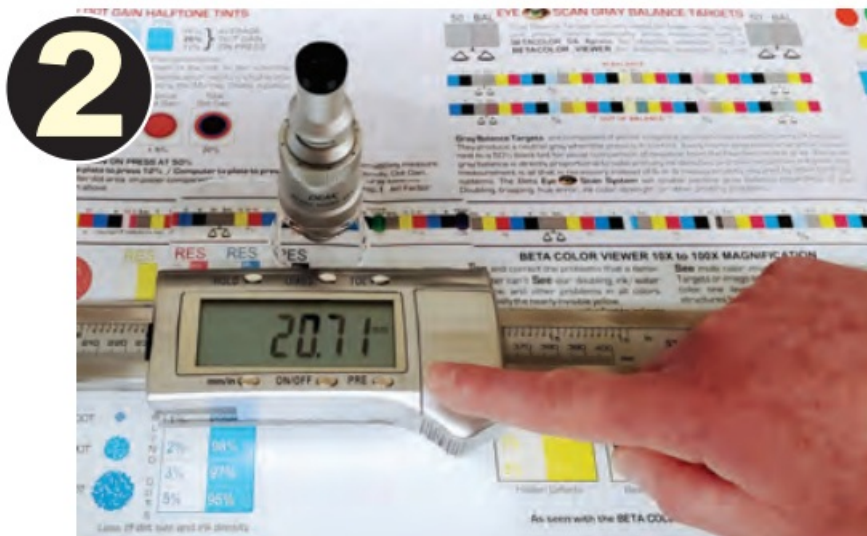
- Press one edge into the groove and then move the opposite edge into place. When properly seated, the microscope will be firmly held in place and will not fall out even if the assembly is inverted.
- The microscope and digital readout should look like this after assembly.
- To remove the microscope when storing the ruler, squeeze the base and lift the microscope out.



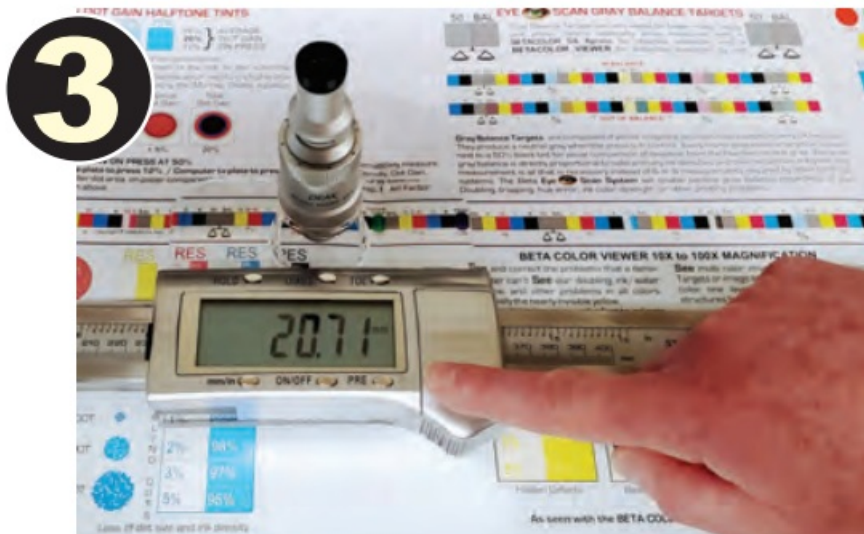
BASIC INSTRUCTIONS



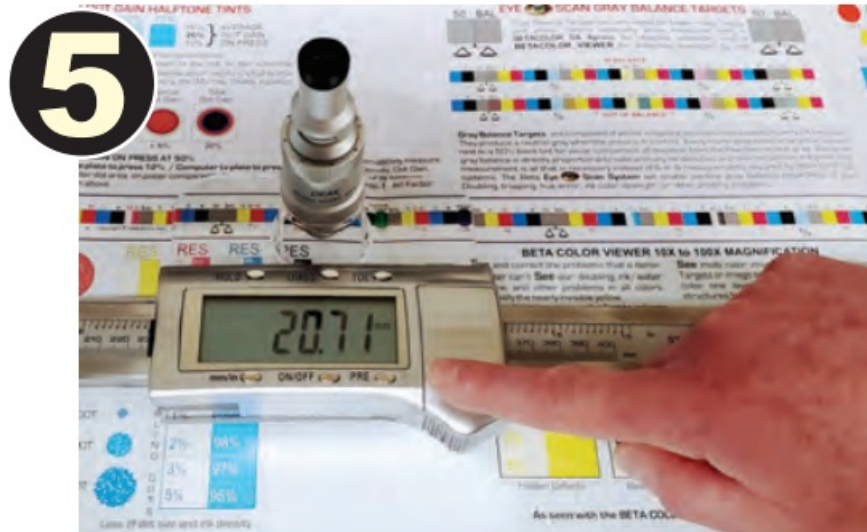
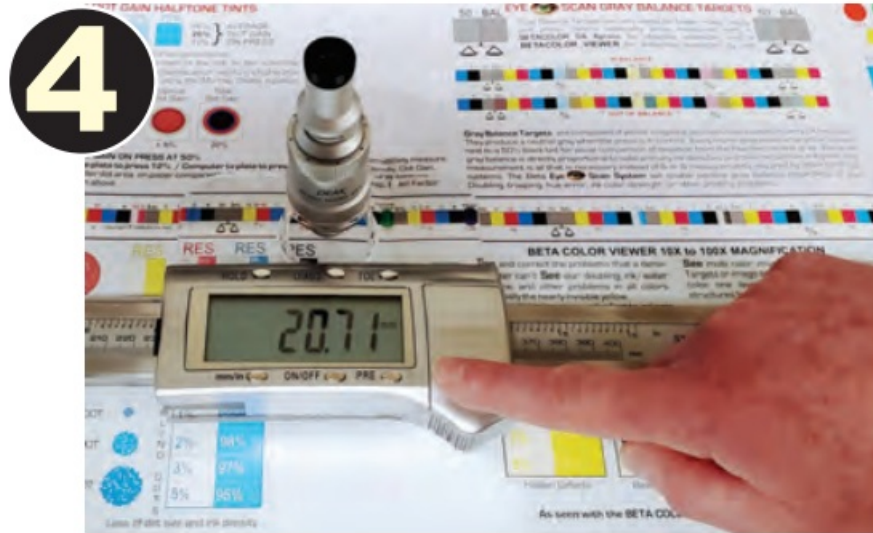
The Beta Precision Digital Electronic Ruler allows precise, non-contact measurements of large and small distances on films, plates, dies, prints, circuit boards & more. Narrow lines can be measured within the eyepiece of the 50x microscope, while the cross hair is used to locate larger details when sliding the readout.



1. Press the ON/OFF button to activate the display.
2. Rotate the upper black ring to bring the reticle into sharp focus.
3. Slide the readout close to the end position and place in final position as shown.



4. Bring the image into sharp focus by turning the large knurled ring.
5. Turn the lower black ring to align the reticle



Optional microscopes of 25x, 75x, and 100x are available. Specify inch or metric reticles for the microscope to suit your needs. Contact us for further information

www.betascreen.net



Documents / Resources



Beta Precision Digital Electronic Ruler [pdf] Instruction Manual
Precision Digital Electronic Ruler, Digital Electronic Ruler, Electronic Ruler, Ruler

References

-  [Beta Screen Corporation | Beta Screen Corporation](#)