

BeSafe iZi Modular A User Manual

BeSafe iZi Modular A User Manua



Contents

- 1 Thank you for choosing BeSafe iZi Modular A (RF)
- 2 Vital information
- 3 Preparing to install
- 4 Installation of the seat on the i-Size base
- 5 Removal of the seat of the i-Size base
- 6 Guarantee
- 7 Documents / Resources
 - 7.1 References

Thank you for choosing BeSafe iZi Modular A (RF)

It is important that you read this user manual BEFORE installing your seat. Incorrect installation could endanger your child.

Vital information



- The child seat MUST NOT be installed in a front passenger seat WITH AN ACTIVATED AIRBAG.
- iZi Modular can only be installed on the iZi Modular i-Size base.
- iZi Modular is approved rearfacing for children with a stature height from 61 to 105 cm, with a maximum weight up to 18 kg and forward facing for children with a stature height from 88 to 105 cm with a maximum weight up to 18 kg.
- iZi Modular RF is approved rearfacing for children with a stature height from 61 to 105 cm, with a max. weight up to 18 kg.
- Important: Do not use forward facing before the child is over 15 months. (Not applicable for iZi Modular RF versions)
- BeSafe recommends to use the seat for as long as possible in the rearfacing position.
- The harness straps must always be locked when the child is in the seat.
- The harness straps must be tightened without slack and not twisted.
- This seat contains belt retractors; always assure that the harness is tight by accessing the shoulder belts inside the shoulder pads and pulling the shoulder belts upwards.
- The shoulder pads contain magnets. Magnets can influence electronic equipment such as pacemakers.
- Protect any part of the child's body which is exposed to the sun.
- Always dress your child in a thin layer of clothes to avoid direct contact between harness belts and skin. Avoid puffy clothes since this prevents being able to tighten the belts fully.
- We recommend that this seat is used only for children who can sit upright, usually not younger than 6 months.
- Remove the extra seat cushion when the child is over 2 years.
- Remove the extra side supports when the child is over 2 years or earlier when the child does not fit between these side supports anymore.
- When the child weighs over 18 kg or the shoulder height exceeds above the highest position of the shoulder straps, the child must change to a seat suitable for children with a weight above 18 kg. • Replace the seat if it has been in a collision where the speed was 10 km/h and above or if there is a suspicion that the seat can be damaged for whatever reason. Although it may look undamaged, if you were to have another accident, the seat may not be able to protect your child to the level to which it was designed.
- Prevent the seat from becoming trapped or weighed down by luggage, seats and/or slamming doors.
- Make sure you can fit no more than one finger between the harness and your child (1 cm).
- DO NOT attempt to dismantle, modify or add any part to the seat. Warranty will be void if non-original parts or accessories are used.
- Never leave your child unattended in the seat.
- Make sure all passengers are informed about how to release your child in case of emergency.
- Make sure luggage or other objects are properly secured. Unsecured luggage may cause severe injuries to children and adults in case of accidents.
- Never use the seat without the cover. The cover is a safety feature and may only be replaced by an original BeSafe cover.
- Do not use any aggressive cleaning products; these may harm the construction material of the seat.
- When washing the seat cover, make sure to follow the wash label on the inside of the cover.
- BeSafe advises that child seats should not be bought or sold second-hand.
- KEEP this user manual for later use with the seat.
- DO NOT use the seat for longer than 7 years. Due to ageing, the quality of the material may change.

- DO NOT use at home. It has not been designed for home use and can only be used in a vehicle.
- When the child seat is mounted in the car check all the areas where the child seat might touch the interior. We recommend using a (Be Safe) protection cover in these places to avoid cuts, marks or discoloration to the interior of the vehicle, especially in vehicles with leather or wooden interiors.
- If in doubt, consult either the car seat manufacturer or the retailer.

Preparing to install

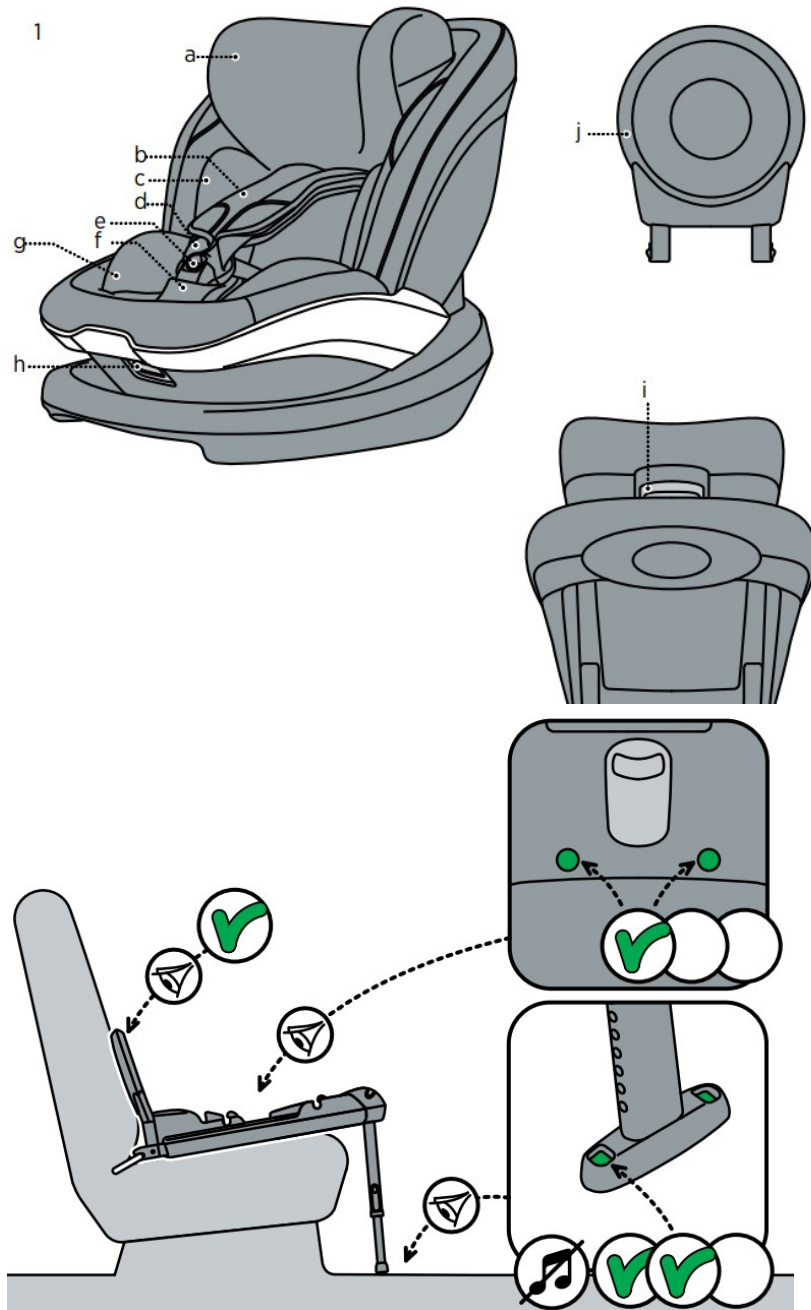
- Adjustable head rest: 1a
- Shoulder pads (2x): 1b
- Side support: 1c
- Shoulder straps (2x): 1d
- Harness buckle: 1f
- Crotch bar: 1h
- Seat cushion: 1i
- Reclining handle: 1h
- Release handle head rest: 1j
- Front brace: 1j

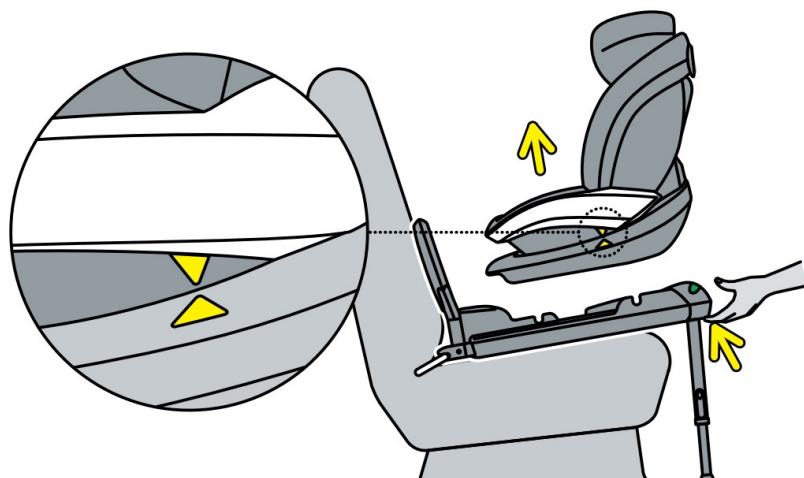
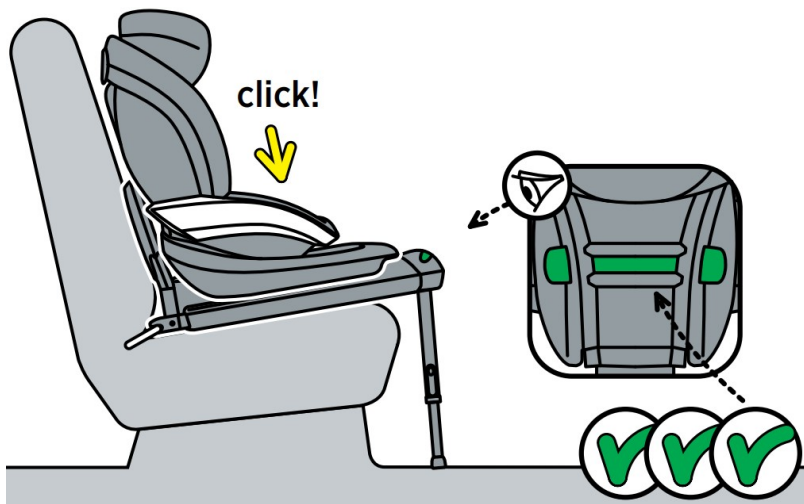
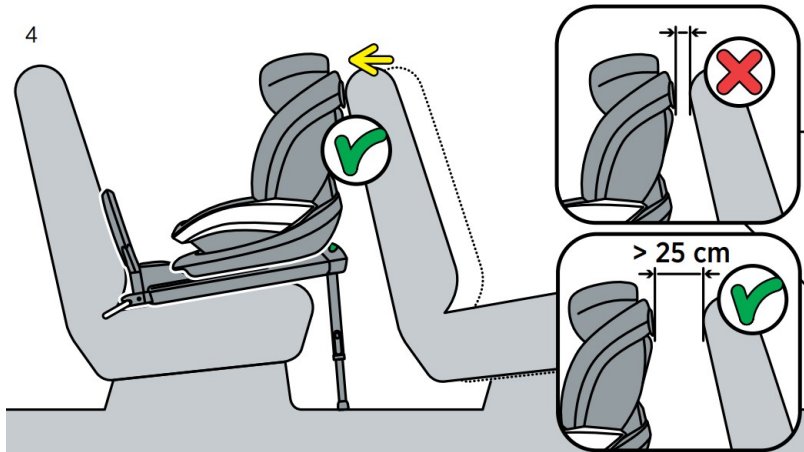
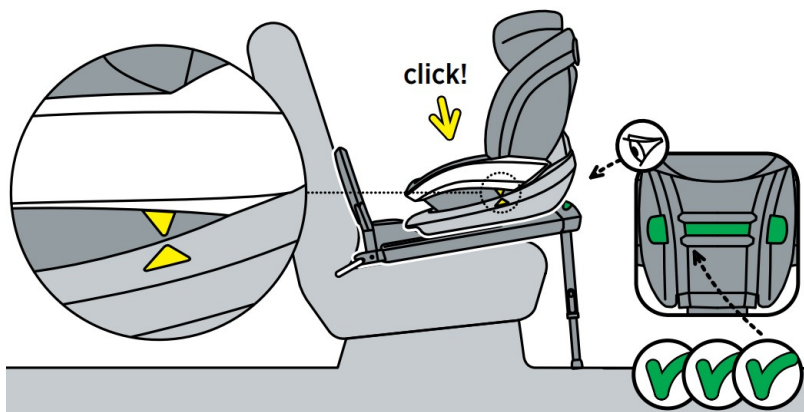
Installation of the seat on the i-Size base

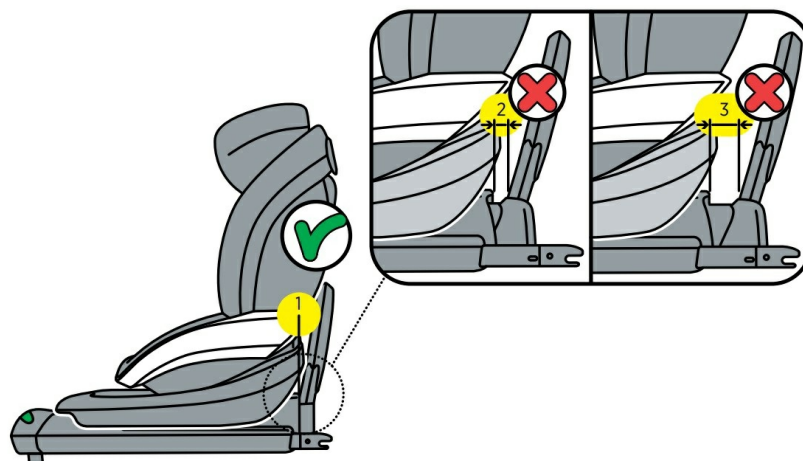
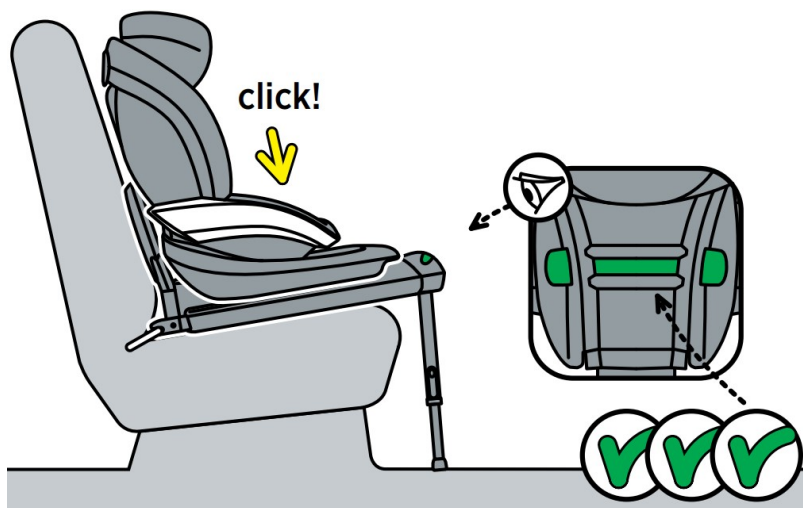
1. Check if the ISO fix and floor support indicators on the base are green. (2)
2. Make sure that the front brace is installed on the base. The operation of the front brace is described in the user manual for the base. (2)
3. Make sure that the seat is always in the release position when you want to install the seat on the base or take the seat off the base. The two yellow arrows on the seat and the base must be aligned. (3) Use the reclining handle to adjust the recline position, see step 6.
4. Position the seat in the correct position on the base until it clicks with the base and the indicator at the front shows green. (3)
5. When the seat is positioned rearfacing on the back seat of the vehicle, you should, if possible, push the front seat of the vehicle backwards, so that it is in contact with the child seat (4). If it is not possible to obtain contact with the child seat, push the back rest of the front seat of the vehicle forward as far as possible.
6. The seat can be taken off and turned around by pulling the seat release handle at the front of the base (5,6). Make sure that the two yellow arrows on seat and seatbase are aligned; this is the only position where you can take off the seat.
7. The seat should only be turned around to forward facing when the child is minimum 88 cm and 15 months. BeSafe recommends to use the seat rear facing for as long as possible.
8. When the seat is positioned forward facing, the front brace has to be in position 1. (7)
9. The seat cannot be turned around in the BeSafe is Modular A RF.
This seat is only to be used rear facing.
10. The seat can be reclined by pulling the reclining handle at the front side of the seat. (8)
11. In a rear facing position the seat should only be used in the 2 most reclined positions. (9)
12. The leg room of the seat, in rear facing position, can be made larger by pulling the front brace box out from the base. The front brace box has 3 positions. To adjust the front brace position, the seat has to be taken off and

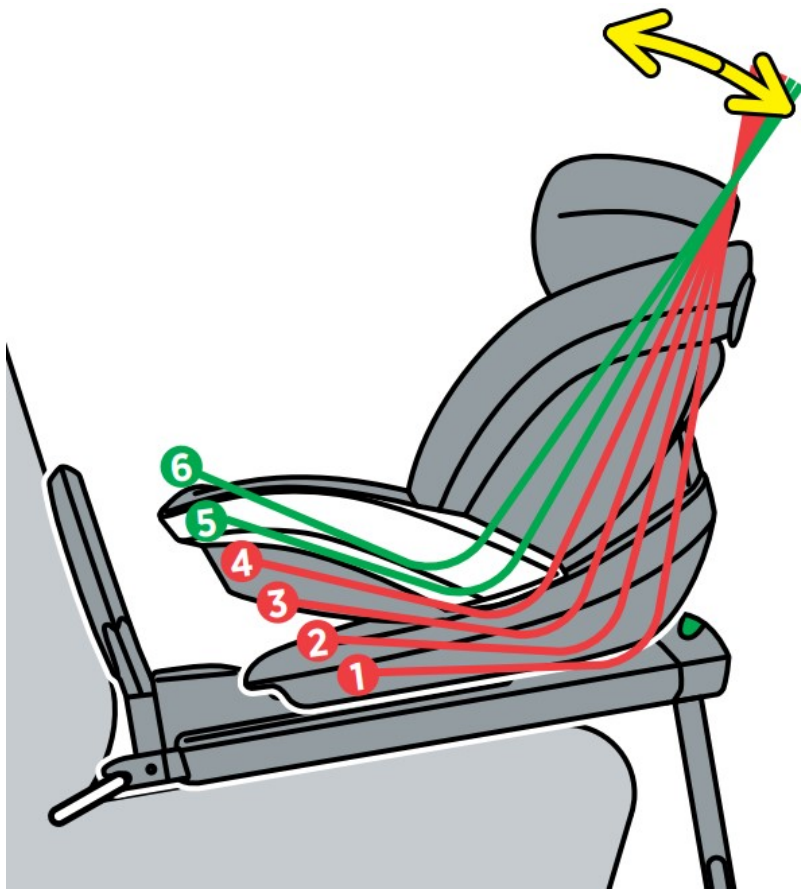
the base should be released from the ISOfix. (10)

13. The seat is delivered with removable SIP+ (side impact protection +). This extra side impact protection should be used on the door side of the vehicle. To connect your SIP+ version, follow the instruction drawings on the SIP+ included with your seat. The seat already offers high level integrated side impact protection. This extra side impact protection improves the protection in the side impact still further. (Not on all models) (11)
14. Do not use the SIP+ on the seat when the space between seat and door of the vehicle is too small, which might lead to a situation where the seat is not positioned correctly on the vehicle seat.

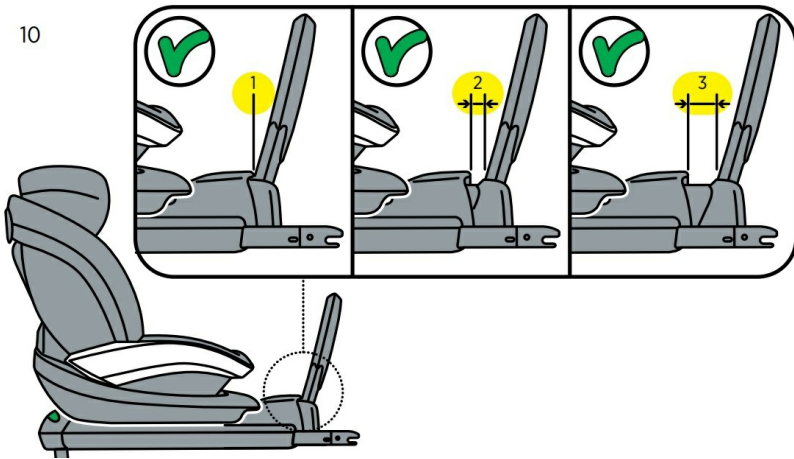






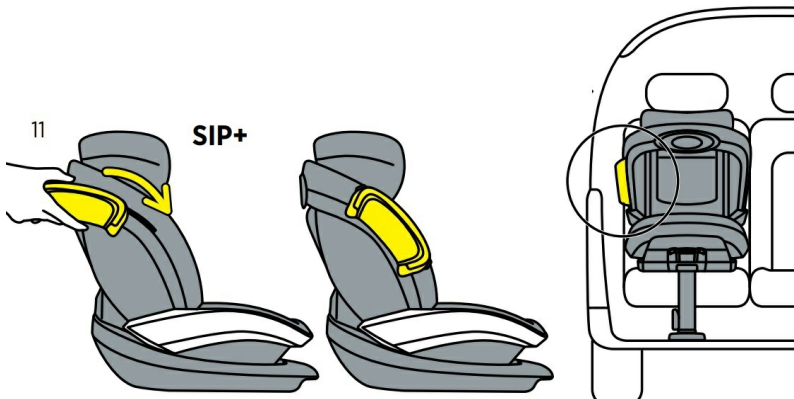


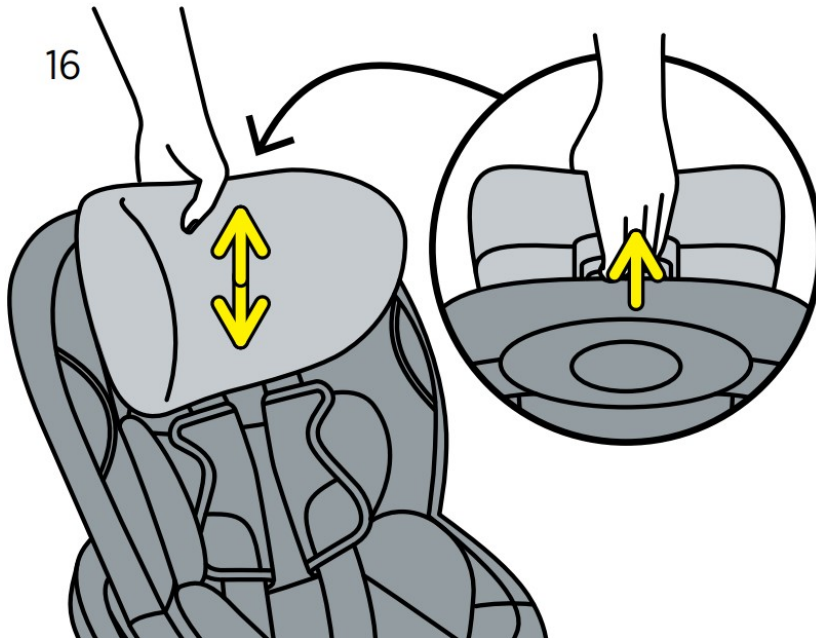
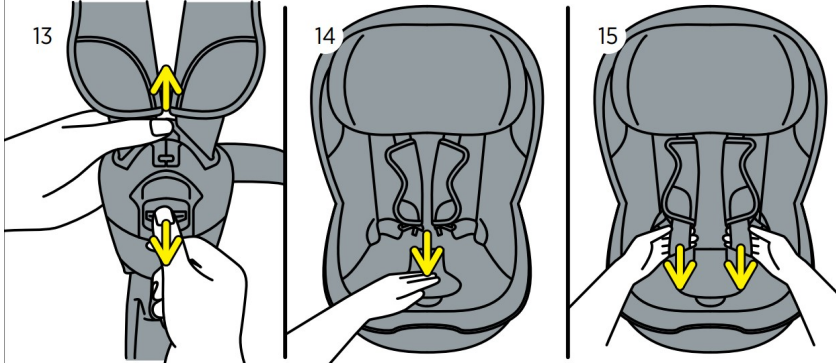
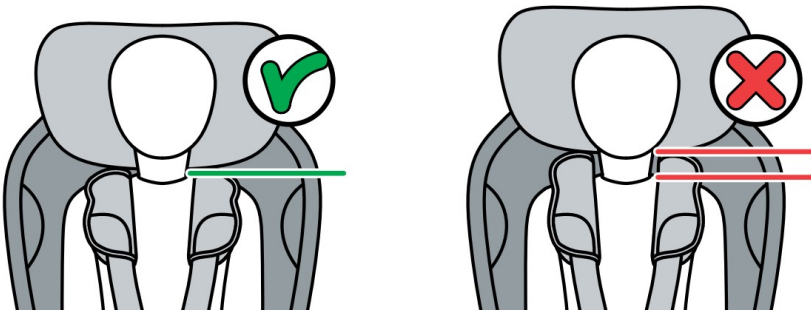
10

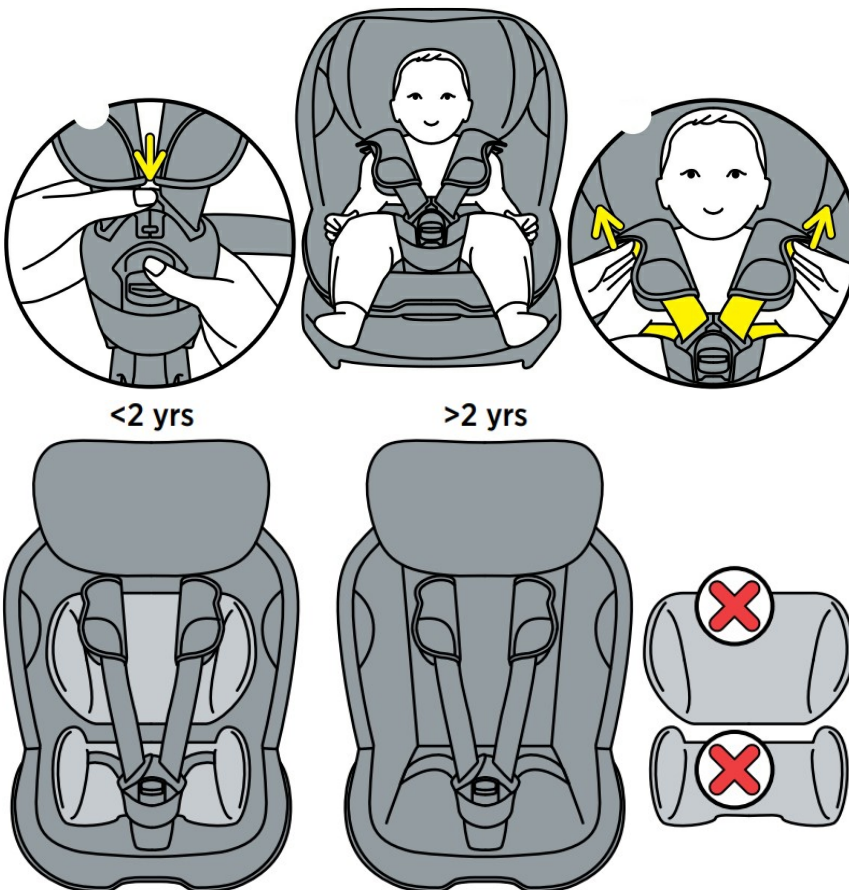
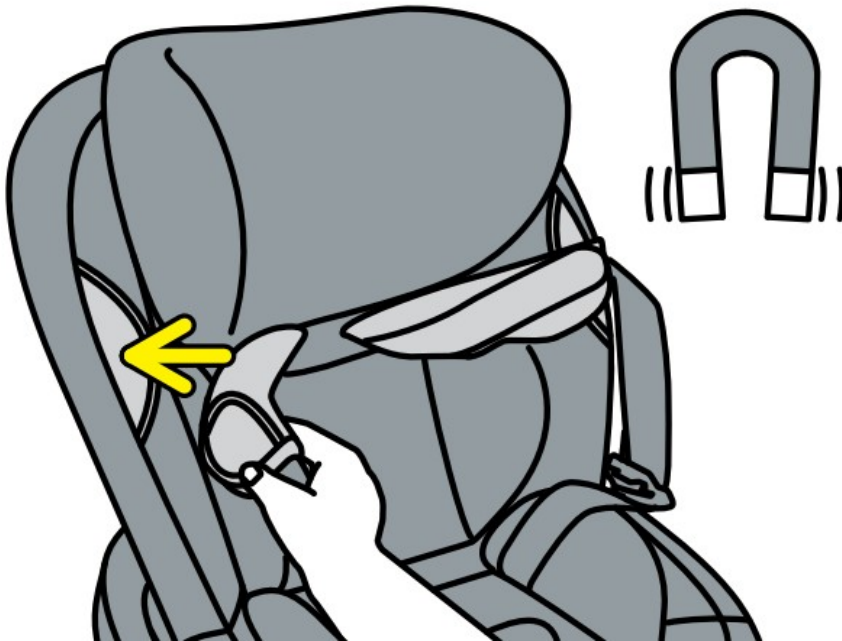


11

SIP+







Removal of the seat of the i-Size base

1. Check that the shoulder strap slots are level with your child's shoulders. (12)
2. Open the harness buckle. (13)
3. Fold the crotch bar forwards into the "open position". In this position, the belts can be pulled out. (14)
4. Pull the shoulder straps away from the seat while the crotch bar is in the "open position". Make sure to pull on

the belt straps only and not on the shoulder pads. (15)

5. The height of the shoulder straps and the head rest can be adjusted by pulling the release handle upwards at the back of the head rest and pulling the head rest up or down. (16)
6. Position the shoulder straps over the marking at the sides of the seat to use the magnets to keep the harness open while you position the child. (17)
7. When the child is positioned in the seat, place the shoulder belts over the child's shoulder and collect the two buckle parts together. Then put the crotch bar upright into the "closed position". In this position, the belts cannot be pulled out anymore. Click the buckle parts into the belt buckle. (18)
8. Make sure that the child is leaning backwards against the backrest, while tightening the harness.
9. Tighten the belt parts over the hips by pulling the belts upwards through the buckle. Then access the shoulder belts inside the shoulder pad and pull them upwards to continue tightening. (19)
10. Repeat pulling the belts upwards inside the shoulder pads until it's not possible anymore to make a fold in the belts.

Removing and refitting the cover

- Do take care when you remove the cover, as refitting the cover is done in reverse.
- The cover of the head rest can be taken off separately by disconnecting the beads at the back and pulling off the fabric towards the front



Warning: potential misuse

- The child seat **MUST NOT** be installed in a front passenger seat **WITH AN ACTIVATED AIRBAG**.
- The floor support must always be used. Make sure that the floor support is fully pushed down.
- When used in combination with iZi Modular the front brace must be fitted on the base.
- Make sure the indicators are green before you drive.



Guarantee

- Should this product prove faulty within 24 months of purchase due to materials or manufacturing fault, except covers and harness straps, please return it to the original place of purchase.
- The guarantee is only valid when you use your seat appropriately and with care. Please contact your retailer, they will decide if the seat will be returned to the manufacturer for repair. Replacement or return cannot be claimed. The guarantee is not extended through repair.
- The guarantee expires: when there is no receipt, when defects are caused by incorrect and improper use, when defects are caused by abuse, misuse or negligence.

Documents / Resources



[BeSafe iZi Modular A](#) [pdf] User Manual
iZi Modular A, iZi Modular, Modular A, Modular, iZi

References

-  [BeSafe: Developing the safest possible car seats for children of all ages](#)
-  [Service Point • BeSafe](#)

[Manuals+](#).