




# Bertazzoni REF18FCIPIXL23 Built In Freezer Column Instruction Manual

[Home](#) » [Bertazzoni](#) » Bertazzoni REF18FCIPIXL23 Built In Freezer Column Instruction Manual 

## Contents

- [1 Bertazzoni REF18FCIPIXL23 Built In Freezer Column](#)
- [2 Product Information](#)
- [3 Product Usage Instructions](#)
- [4 PRODUCT DIMENSIONS](#)
- [5 CUTOUT DIMENSIONS](#)
- [6 ELECTRICAL & WATER CONNECTION](#)
- [7 INSTALLATION REQUIREMENTS](#)
- [8 Documents / Resources](#)
- [9 Related Posts](#)



**BERTAZZONI**

**Bertazzoni REF18FCIPIXL23 Built In Freezer Column**



## Product Information

The product is a refrigerator with the following dimensions:

- Side View: 22 1/16 inches (560 mm)
- Front View: 17 5/8 inches (447 mm)
- Door Width: 80 3/4 inches (2050 mm) + 1(25)
- Cutout Dimensions:
  - Side View: aa
  - Front View: \*
  - Top View: 2 1/2 inches (63 mm) x 17 15/16 inches (456 mm)
- Maximum Overall Handle Dimension: Top View – 25 inches (635 mm)
- The product requires a properly-grounded, horizontally-mounted electrical receptacle and a 1/4 NPT waterline with accessible shut-off valve for water connection.
- Anti-tipping brackets must be installed if the appliance is not connected through the side profile trims to secured cabinetry.
- A separate circuit breaker servicing only this appliance is recommended.

## Product Usage Instructions

1. Install a properly-grounded, horizontally-mounted electrical receptacle according to the drawing provided in the

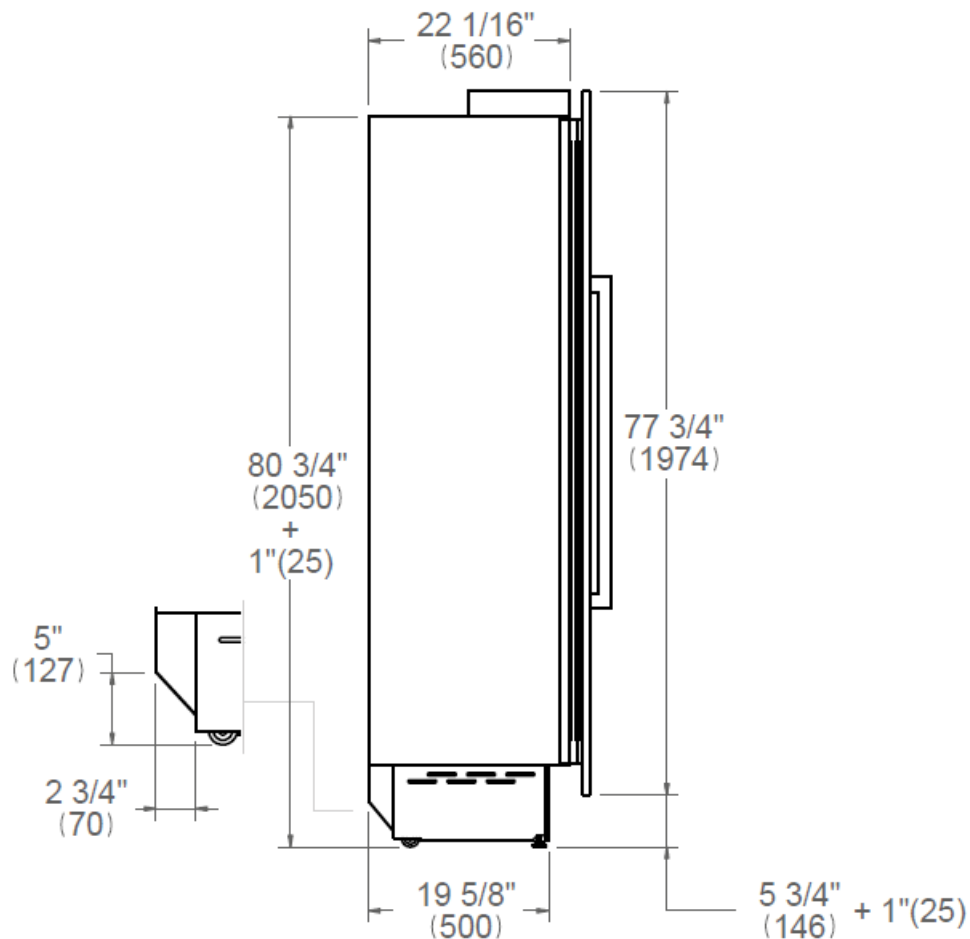
installation requirements section of the manual.

2. Connect the product to a water supply system using a 1/4 NPT waterline with an accessible shut-off valve.
3. If the appliance is not connected through the side profile trims to secured cabinetry, install anti-tipping brackets.
4. Ensure that the product is connected to a separate circuit breaker servicing only this appliance.

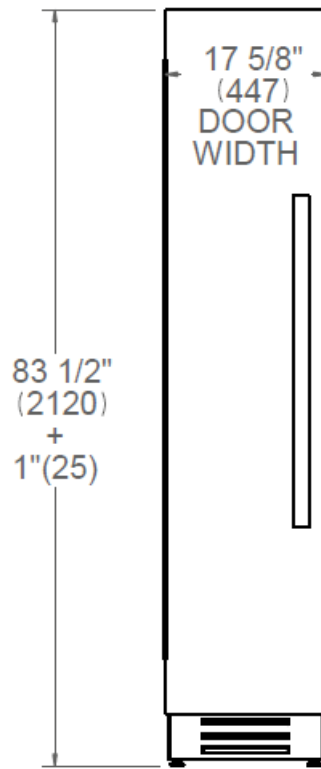
**Note:** For installation of multiple products in combination, refer to the Built-in Food Preservation Design Guide.

## PRODUCT DIMENSIONS

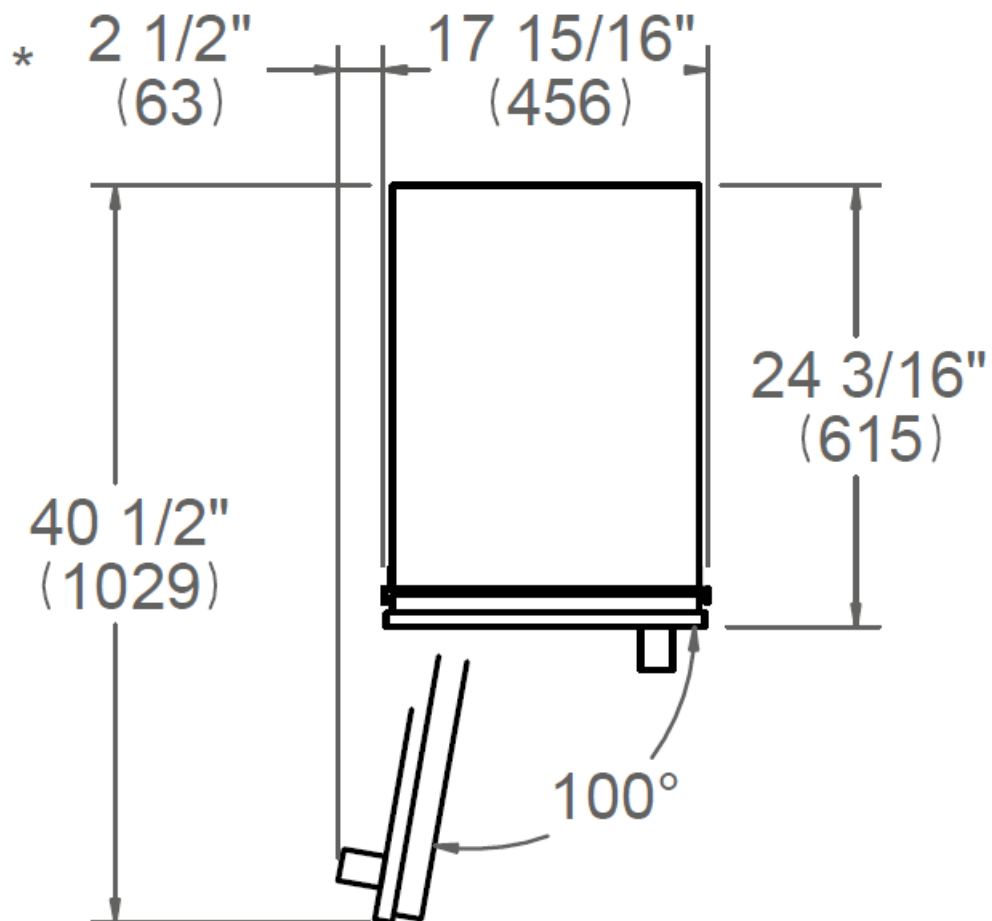
### SIDE VIEW



### FRONT VIEW



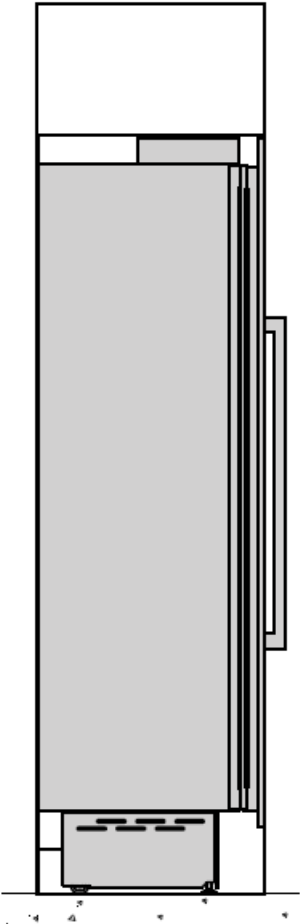
#### TOP VIEW



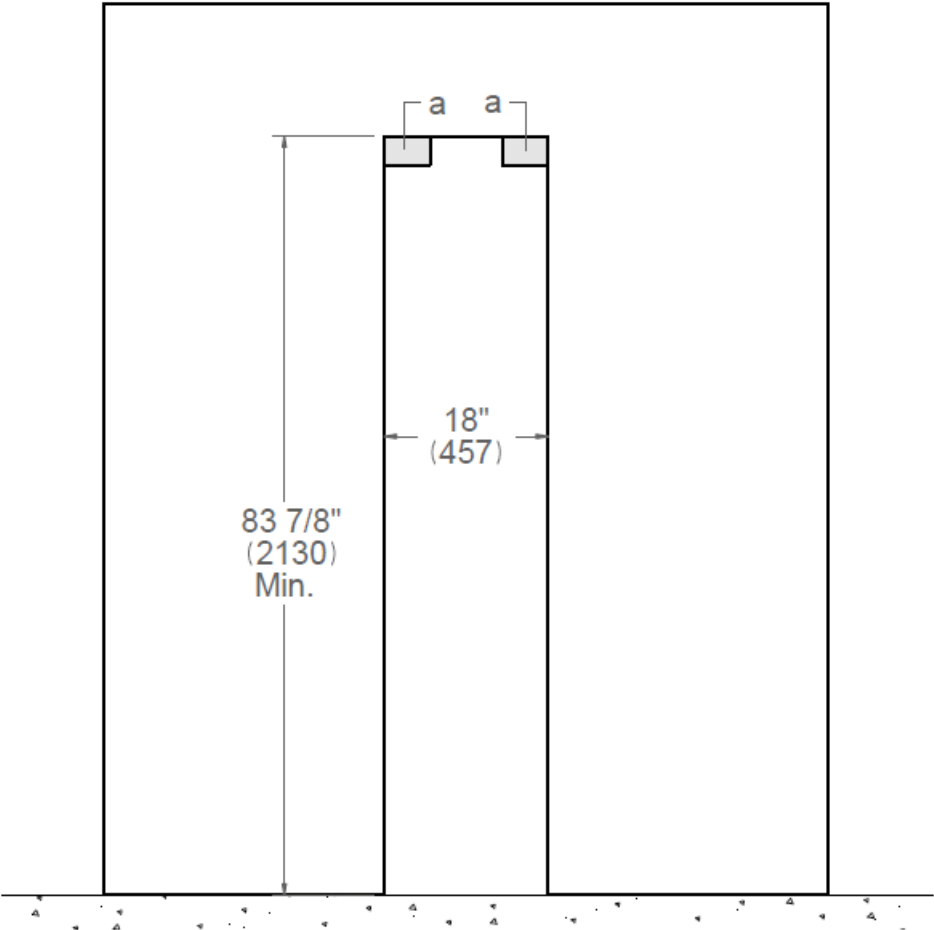
Maximum Overall Handle Dimension

#### CUTOUT DIMENSIONS

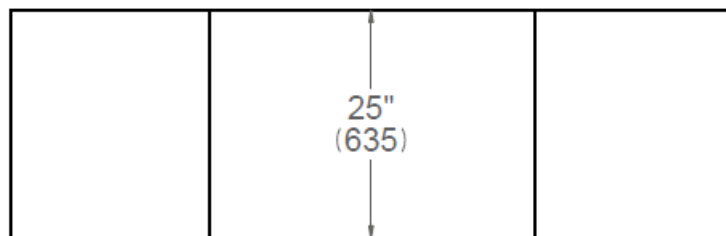
SIDE VIEW



FRONT VIEW



## TOP VIEW



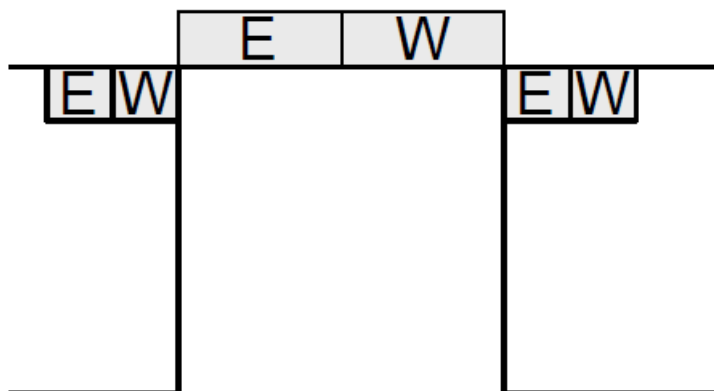
Area to be left clear for the anti-tipping brackets 3"1/2x5" (82x127mm)

## ELECTRICAL & WATER CONNECTION

E

### • TOP VIEW

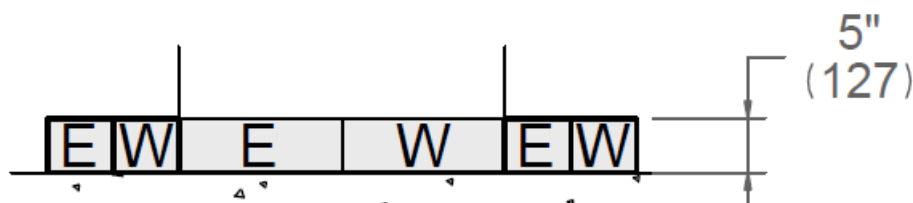
- A properly-grounded, horizontally-mounted electrical receptacle should be installed according to this drawing



W

### • FRONT VIEW

- To connect to the water supply system, a 1/4" NPT waterline with accessible shut-off valve must be supplied.



Connection(s) placement within the opening may require additional cabinet depth.

A separate circuit breaker servicing only this appliance is recommended.

For installation of multiple products in combination, refer to the Built-in Food Preservation Design Guide.

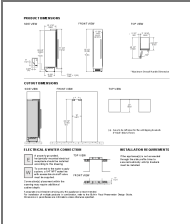
Dimensions in parentheses are millimeters unless otherwise specified.

## INSTALLATION REQUIREMENTS

If the appliance(s) is not connected through the side profile trims to secured cabinetry anti-tip brackets must be

installed.

Documents / Resources



[Bertazzoni REF18FCIPIXL23 Built In Freezer Column](#) [pdf] Instruction Manual  
REF18FCIPIXL23 Built In Freezer Column, REF18FCIPIXL23, Built In Freezer Column, Freezer Column