



Berrybak BEA1 Bluetooth Decoder User Manual

[Home](#) » [BerryBak](#) » Berrybak BEA1 Bluetooth Decoder User Manual 

*BerryBak*TM

User Manual



Bluetooth Decoder
BEA1

Contents

- [1 BEA1 Bluetooth Decoder](#)
- [2 Technical Specifications](#)
- [3 Front View](#)
- [4 Rear View](#)
- [5 Setup](#)
- [6 Functionality](#)
- [Descriptions](#)
- [7 Accessories](#)
- [8 Troubleshooting](#)
- [9 Documents / Resources](#)
 - [9.1 References](#)

BEA1 Bluetooth Decoder

Bluetooth Decoder

One Product,

Multiple Audio Format

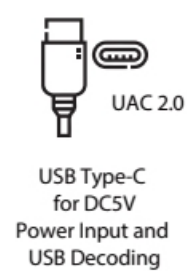
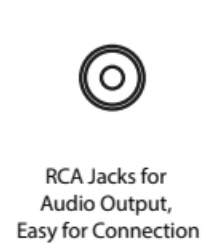
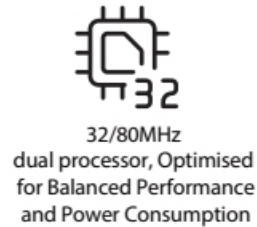
Bluetooth to S/PDIF (Optical/Coaxial) Converter

Supporting USB Codec Input

USB to S/PDIF (Optical/Coaxial) Converter

USB to Analog Converter

Experience the Ultimate Sound Quality with the Qualcomm QCC5171 Solution. Supporting LDAC, aptX-Lossless, aptX-HD, SBC, AAC, aptX, aptX-Adaptive, and more, it delivers a maximum transmission rate of 990kbps. With support for 24bit/96kHz sampling rate, the audio quality rivals that of a wired connection. Powered by the independent ESS9018 decoding chip, it offers a delicate and smooth sound experience with minimal distortion and exceptional resolution.



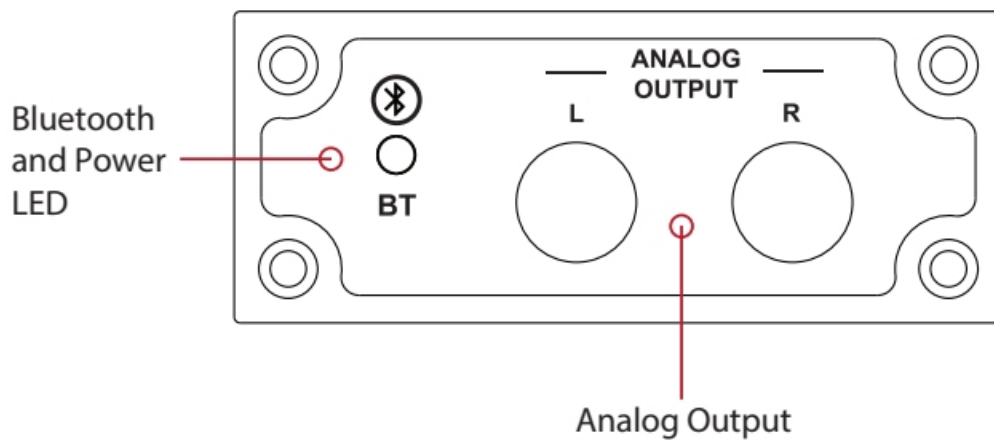
Technical Specifications

Brand	Berrybak
External Power	USB Type-C (5V, 0.5A)
Input Interface	Bluetooth 5.3 & UAC 2.0
Output Interface	RCA (Output Level 2V RMS); Optical Fibre / Coaxial (48kHz or 96kHz related to Audio Encoder)
Power Consumption	0.48W (Bluetooth connected, output start at -8dB) (Bluetooth disconnected)
Bluetooth Specification	LDAC, aptX-Lossless, aptX-HD, SBC, AAC, aptX, aptX-Adaptive
Size	64.0 x 95.4 x 26.0mm (Not included the antenna and RCA connectors)
Weight	191g (Including the antenna)

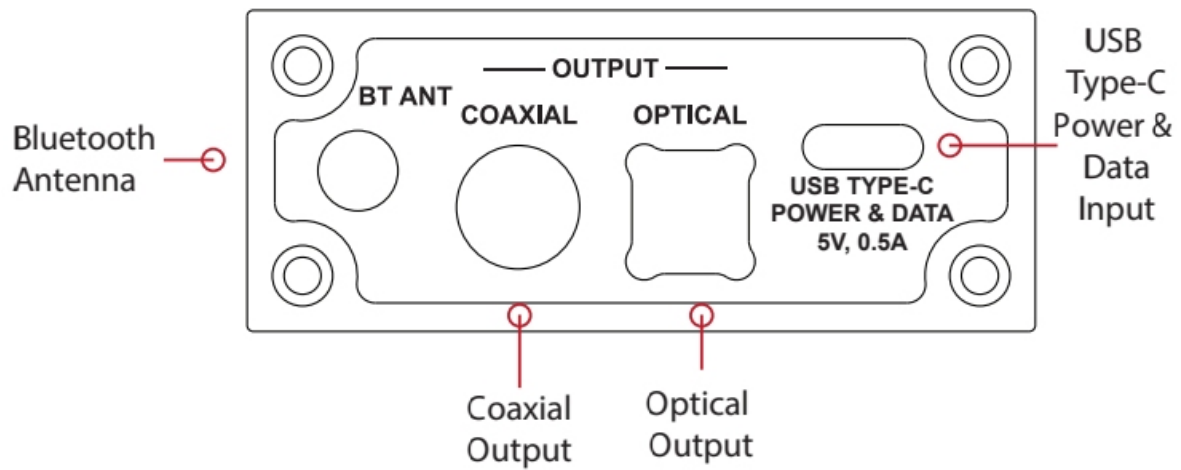


Description Devices Components on Front View and Rear View of The Panel

Front View



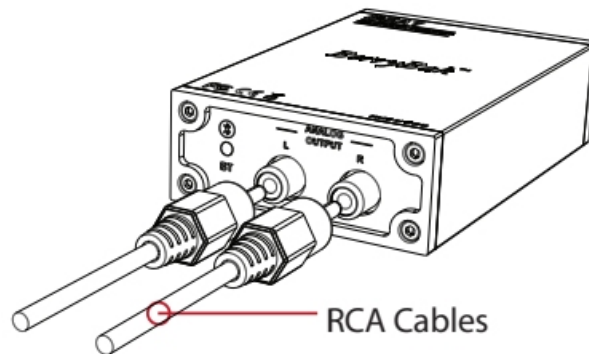
Rear View



Setup

1. For Analog Output:

Connect the RCA Cable into the Analog Output connector on BEA1, then connect the other end into the Analog Input connector on your amplifier.

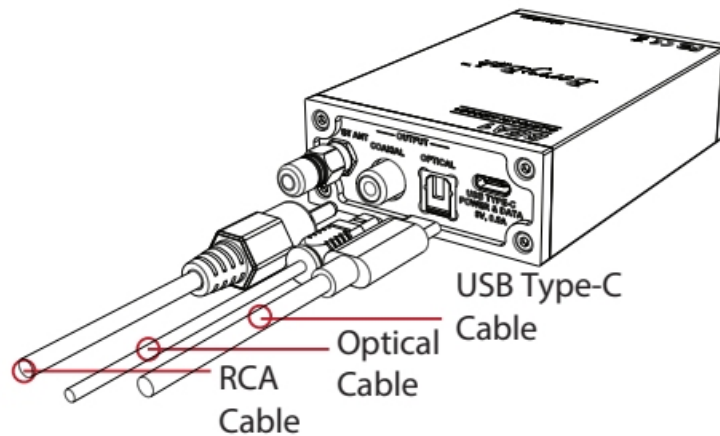


2. For Digital Output:

Connect RCA Cable into the Coaxial Output connector on BEA1, then connect the other end into the Coaxial Input connector on your amplifier.

OR

Connect Optical Cable into the Optical Output connector on BEA1, then connect the other end into the Optical Input connector on your amplifier.



3. For Power Input

Connect USB Type-C Cable to the Type-C Power Input on BEA1 which is connected to a power source.

Functionality Descriptions

Bluetooth and Power LED

LED Light Indicator:

Light Blue Blinking: Powered on.

Light Blue Steadily: Paired.

Analog Output

Allows to connect BEA1 to audio devices that have analog inputs.

USB Type-C Power Input

To turn the BEA1 on, connect the USB Type-C power input with Type-C cable that connected to a power source.

WARNING:

1. Ensure that BEA1 is placed on a stable surface and protected from moisture, heat sources and direct sunlight.
2. Do not attempt to dismantle or modify BEA1, as this may cause damage and void the warranty.
3. Keep BEA1 away from strong magnetic fields or other electronic devices to avoid interferences.
4. Unplug BEA1 from the power source during lightning storms or when not in used for an extended period.
5. Always follow local regulation and guidelines regarding the disposal of electronic devices at the end of their life cycle.

Bluetooth Antenna

1. Enables BEA1 to send and receive wireless Bluetooth signal.
2. Helps in establishing a stable and reliable connection.

Coaxial Output

1. Provide digital audio signal in a coaxial format.
2. Allows user to connect BEA1 to devices that support coaxial input such as soundbars, or AV receivers.

Optical Output

1. Also known as TOSLINK or SPDIF, which act as digital audio signal in an optical format.
2. Uses a fiber optic cable to transmit audio signal, enabling user to connect BEA1 to devices that have an optical input, such as home theatre systems, soundbars, or TVs.

NOTES:

Please consult our customer support or visit our website for any further assistance, troubleshooting or updates.

DISCLAIMER:

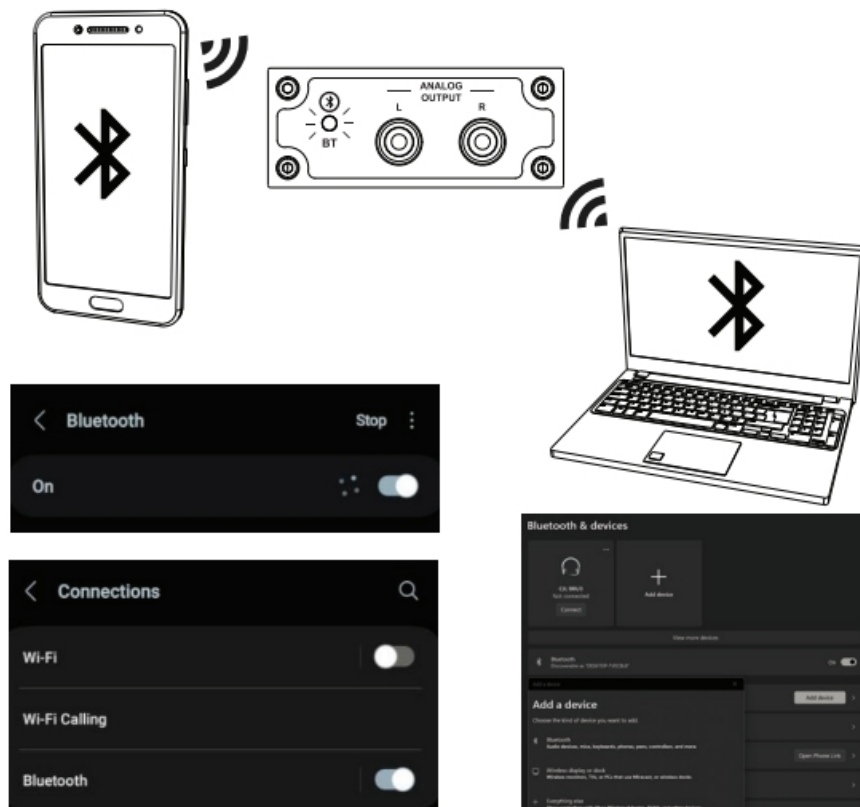
The manufacturer is not responsible for any damage or loss resulting from improper use, neglect, or failure to follow the instructions provided in this user manual. How to connect through Bluetooth

To PC

1. The LED blinks when BEA1 is powered on.
2. Enables the Bluetooth setting in your PC.
3. Click on the option that says 'Add Bluetooth or other devices.'
4. Select the 'Bluetooth' option and begin to search for 'BerryBak BEA1' to begin pairing.
5. The blue LED will light up when pairing is successful.

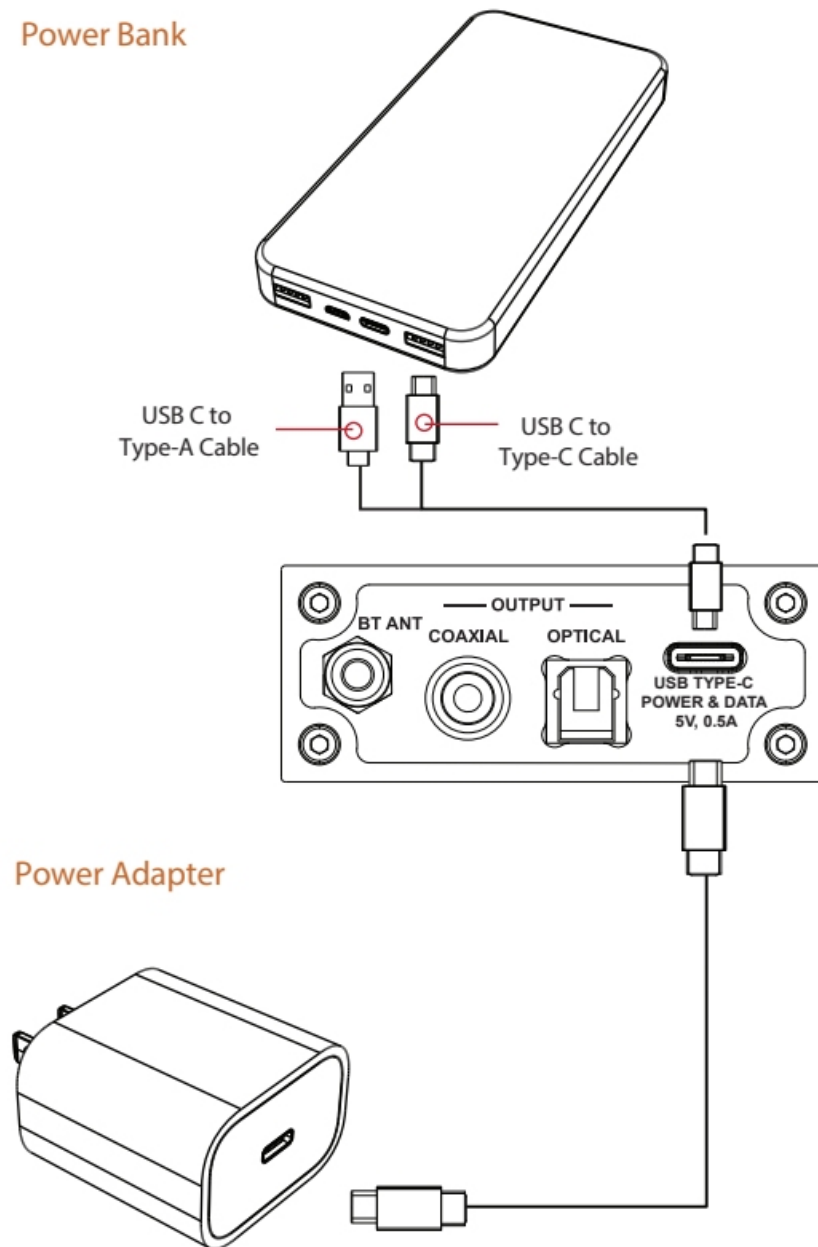
To iOS/Android

1. The LED blinks when BEA1 is powered on.
2. Open the settings app on iOS or Android device.
3. Navigate to the 'Connections' option in Android or 'Bluetooth' in iOS device.
4. Enable the 'Bluetooth' option and begin to search for 'BerryBak BEA1' to begin pairing.
5. The blue LED will light up when pairing is succesful.



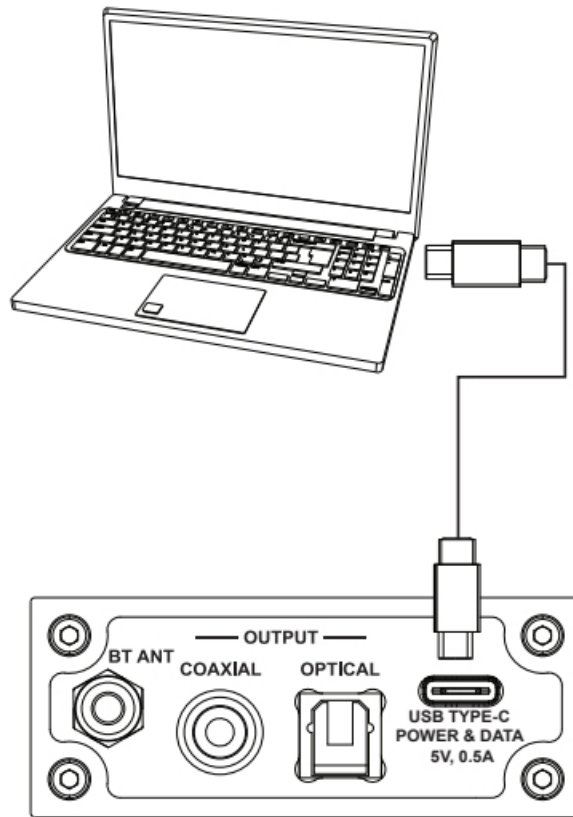
USB Type-C Connector Usage Instructions

Power Bank



Power Adapter

USB Decoding



1. Connected the USB cable to the PC.

In this condition, the BEA1 will be powered by the PC, no extra power supply is required.

2. To check the USB status, type for Device Manager at the 'Search' option.
3. Look for the category named 'Universal Serial Bus Controller'. Click the arrow next to it and search for BerryBak BEA1.

Accessories

1. Bluetooth antenna 1pcs
2. Optical cable (only for S/PDIF Enabled version)..... 1pcs

Troubleshooting

Issue	Possible Solutions
The BEA1 work normally under Bluetooth mode, but it cannot work as USB codec and it's not able to establish a connection with your PC.	<ol style="list-style-type: none"> 1. Make sure that the USB cable used is equipped with Data Communication function. 2. Under this circumstances, turn around the USB Type-C connect 180° and try again.
The BEA1 cannot be recognised as USB codec after connect to your PC.	Power Off/On again.
Music playback is interrupted intermittently, and the connection is unstable.	<ol style="list-style-type: none"> 1. Please check the Bluetooth antenna to ensure it is tightened securely. 2. Check if the BEA1 is within the recommended range of your devices. 3. Maintaining a distance of around 33ft(10m) is generally recommended. 4. Move closer to the Bluetooth unit if you experience sound distortion or interruptions. 5. Additionally, inspect the area around the Bluetooth unit for any substances that may be blocking the Bluetooth signal. Clear away any obstructions to improve the connection quality.
Noise occurs when switching between LDAC and AptX modes.	<ol style="list-style-type: none"> 1. This issue may arise when using certain external SPDIF decoders that do not support SRC (Sample Rate Conversion) functionality. <p>We recommend trying a different SPDIF decoder too see if the problem persists.</p>
Intermittent music playback interruptions in LDAC mode.	<ol style="list-style-type: none"> 1. If you prefer the high audio quality of LDAC with a 990kbps bit, ensure that the BEA1 is positioned close to your device. This proximity helps maintain a stable connection and minimise.

Service and warranty

Service of BerryBak products should only be carried out by authorised service agents. If service is required, the equipment should be securely packaged and returned, preferable using original packing to your dealer.

Please enclose a note with your name, address, telephone number, and a brief description of the reason for the return.

If you require service outside the warranty period, please do not hesitate to contact your dealer.

The distributor guarantees a product lifecycle more than 5 years for all standard products. We provide a one-year free warranty for customer's benefit. The distributor warrants this product to be free from defects in materials and workmanship for two years. During the warranty period, the distributor will repair or replace (at the distributor's discretion) this products, or any defective part, if it is found to be defective due to faulty materials, workmanship or function.

Legal statement

The distributor reserves the right to make changes, changes, correction, modifications, and improvements to BerryBak products and/or the documents at any time without notice. Customers should obtain the latest relevant information before placing orders.

Purchasers are solely responsible for the choice, selection, and the use of BerryBak products and the distributor assumes no liability for application assistance or the design of purchaser's product.



<https://www.berrybak.com/>

Authorised distributor:

BerryBak Sdn. Bhd. (1326482-V)
No. 58, 7-2, Jalan Cantonment,
Wisma Fortune Heights,
10250, Georgetown,
Pulau Pinang, Malaysia
service@berrybak.com

Documents / Resources



[Berrybak BEA1 Bluetooth Decoder](#) [pdf] User Manual
BEA1 Bluetooth Decoder, BEA1, Bluetooth Decoder, Decoder

References

- [BerryBak Sdn. Bhd.](#)
- [User Manual](#)

[Manuals+](#), [Privacy Policy](#)

This website is an independent publication and is neither affiliated with nor endorsed by any of the trademark owners. The "Bluetooth®" word mark and logos are registered trademarks owned by Bluetooth SIG, Inc. The "Wi-Fi®" word mark and logos are registered trademarks owned by the Wi-Fi Alliance. Any use of these marks on this website does not imply any affiliation with or endorsement.