



beper P206VEN130 Stand Fan with Timer Instruction Manual

[Home](#) » [beper](#) » beper P206VEN130 Stand Fan with Timer Instruction Manual 

beper P206VEN130 Stand Fan with Timer Instruction Manual



Precautions

Read the following instructions carefully, since they give you useful safety information about installation, use and maintenance and help you avoid mishaps and possible accidents.

Remove the packing and make sure that the appliance is intact, with special attention to the supply cable.

The elements of the packing (plastic bags, polystyrene, etc) do not have to be accessible to the children, in order to preserve them from danger sources. It is recommended not to throw these packing material in the domestic waste, but to deliver them to the appropriate station of collection or destruction refusals, asking eventually information to the manager of the Sanitation Department of your own municipality.

If the supply cord is damaged, it must be replaced by the manufacturer, its service agent or similarly qualified persons in order to avoid a hazard.

Before connecting the appliance make sure that the mains voltage corresponds to the data specified on the label. The appliance can be damaged if the voltage is not correct.

If the plug does not suit the socket, let it be replaced with another suitable plug by qualified personnel only, which shall also ensure that the section of the socket cables is suitable for your appliance power absorption.

Generally, the use of multiple plugs and/or extensions is not recommended; should they be necessary, please use only simple or multiple adaptors and extensions in compliance with the safety rules in force, making sure that the capacity absorption limit marked on the simple adaptors and the extensions and the maximum power limit marked on the multiple adaptor are not exceeded.

Do not use the appliance if the cable or the plug shows any damages.

Do not use the appliance after a possible irregular working. In this case, switch it off and do not break it open. Refer to an authorized Beper after-sale service for repair and require original spare parts only. Failing to follow these instructions may impair the safety of your appliance.

This appliance is to be destined to its special purpose only. Any other use is to be considered as improper and thus dangerous. The manufacturer cannot be responsible for any damages deriving from improper, wrong or incautious use.

This appliance is for household use only.

To protect against electric shock, do not immerse cord, plug or any parts of the appliance into water or other fluids. Do not use the appliance near explosives, highly flammable materials, gases or burning flames.

Do not allow children, disabled people or every people without experience or technical ability to use the appliance if they are not properly watched over.

Close supervision is necessary when any appliance used by or near children.

Some warnings

Do not plug the supply cord before assembly every parts of the fan.

Before using, check the integrity of the supply cord and eventually remove possible nodes.

Place the fan on a flat and stable surface in a dry place.

Keep away to a reasonable distance the fan from walls, doors, windows or every object that could avoid the appliance to work in the correct way.

Do not cover the body or grid of the fan when the appliance is working.

Do not plug objects into the grid or inside the appliance.

Do not pull on the supply cord to unplug the appliance.

After using the fan, unplug the cord supply.

If the fan must be stored for a long period or non-used, replace the fan in the original packaging in a dry place. For every next use, check that the fan is clean and that the blades turn in the correct way (motor off).

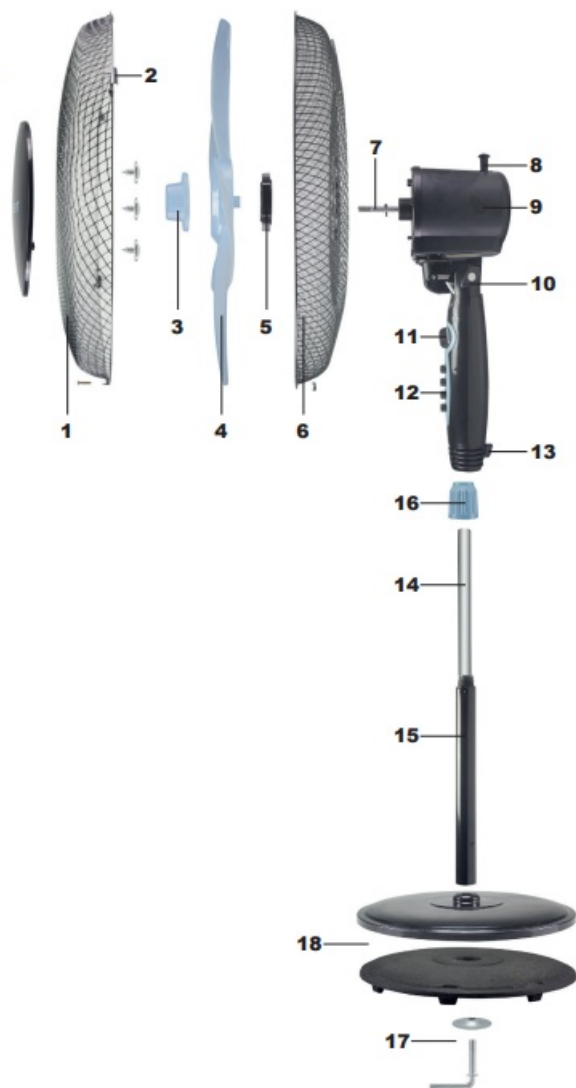
Contents

- 1 Description of the item
- 2 Assembly instructions
- 3 Cleaning
- 4 Technical data
- 5 GUARANTEE
CERTIFICATE
- 6 Documents / Resources
 - 6.1 References
- 7 Related Posts

Description of the item

Fig.A

Fig. A



1. Front grid
2. Closure nut
3. Nut blades
4. Blades
5. Rear grid nut
6. Rear grid
7. Motor
8. Swing button
9. Body motor
10. Inclination set button
11. Timer
12. Control panels
13. Screw for pipe
14. Internal pipe
15. External pipe
16. High adjustment handle
17. Screw pipe coupling with clamping washer
18. Base

Assembly instructions

Put the base on the floor.

Insert completely the internal pipe inside the external pipe.

Fix the high adjustment handle.

Fix the external pipe to the base with the screw (included in packaging).

Take off the external pipe, and regulate it until the desired height. Strongly screw the high adjustment handle.

Place the control panels on the pipe.

Screw completely with the screw in order that the control panels is well fixed to the intern pipe.

Place the rear grid on the motor, in order that the holes of the grid are well inserted into the motor of the fan

Strongly and completely screw the rear grid in order to block the grid on the motor.

Insert the blades of the fan on the motor and completely screw the nut blade on the motor, in order to block the body motor.

Assembly the 2 grid front and rear ones by inserting the closure nut, place the front grid, on the rear grid. Close the nuts to block the grids.

Speed selection

Choose the speed desired pressing on the buttons of the control panels.

Position 0 the fan switch off.

Position 1 low speed.

Position 2 medium speed.

Position 3 high speed.

Timer

The timer can be set from 10 to 60 minutes by turning the knob on the control panel. Once the time set has expired, the fan will shut off automatically.

Head inclination

It is possible to choose various positions and change the air flow swing.

Before changing it, switch off the fan.

Take the motor body, unscrew the regulation axis and change the inclination of the fan as desired and screw the air strongly.



Attention: do not try to force the inclination position in order to avoid any failure.

Swing

When pressing the swing button, It is possible to activate or disconnect the swing of the fan, by touching the swing button. Swing allow to provide the air uniformly.

To activate the push the swig button down until is completely blocked ; the head fan turns automatically from right to left. To disconnect the swing raise completely the button.

Cleaning

Before cleaning, switch off and unplug the fan.

For cleaning use a soft cloth, that may be softly wet.

Do not use alcohol or chemical substances, or any detergent that could damage this appliance.

Do not spray water or other liquids on the fan in order to protect it.

After cleaning, dry every parts before using the appliance.

During the winter and when not used, keep this appliance in a dry and clean place.

Technical data

Power: 40W

Power supply: 220V ~ 50Hz

For any improvement reasons, Beper reserves the right to modify or improve the product without any notice.



The European directive 2011/65/EU on Waste Electrical and Electronic Equipment (WEEE), requires that old household electrical appliances must not be disposed of in the normal unsorted municipal waste stream. Old appliances must be collected separately in order to optimize the recovery and recycling of the materials they contain, and reduce the impact on human health and the environment.

The crossed out "wheeled bin" symbol on the product reminds you of your obligation, that when you dispose of the appliance, it must be separately collected.

GUARANTEE CERTIFICATE

This appliance has been checked in the factory. From the date of original purchase a 24 month guarantee applies to material and production defects. The purchase receipt and the guarantee certificate must be submitted together in case of claim to guarantee.

The guarantee is valid only with a guaranty certificate and proof of purchase (fiscal receipt) indicating the date of purchase and the model of the appliance.

For any technical assistance, please contact directly the seller or our head office in order to preserve the appliance's efficiency and NOT TO void the guarantee. Any intervention on this appliance by non authorized persons will automatically void the guarantee.

GUARANTEE CONDITIONS

If the appliance shows defects as a result of faulty material and/or production during the period of guarantee, we guarantee repair free of charge on condition that:

- The appliance has been used properly and for the purpose for which it has been intended.
- The appliance has not been tampered with, otherwise it is not maintainable.
- The purchase receipt shall be presented.
- The appliance showing a fair wear and tear shall not be covered by this guarantee.

Therefore, any part that could be accidentally broken or having visible signs of use in consumable products (such as lamps, batteries, heating elements...) the aesthetic parts are excluded from the guarantee, and any defect whatsoever resulting from non-respect of the rules for use, negligence in usage and/or maintenance of the appliance, carelessness, wrong or improper installation, damage during transport and any other damage not attributable the supplier.


For every defect that could not be repaired within the guarantee period, the appliance will be replaced free of charge.

In any case, if the part to be replaced for defect, breakage or malfunction is an accessory and/or a detachable part of the product, Beper reserves the right to replace only the very part in question and not the entire product

Contact your distributor in your country or after sales department Beper.

E-mail assistenza@beper.com which will forward your enquiries to your distributor.

Documents / Resources



The image shows the cover of the instruction manual for the Beper P206VEN130 Stand Fan with Timer. It features a photograph of the fan, which has a black frame and a silver-colored grille. The Beper logo is at the top left, and a table of contents is visible on the right side of the cover. The text 'CAL. F2006VEN130' and 'CE' mark are also present.

[beper P206VEN130 Stand Fan with Timer](#) [pdf] Instruction Manual

P206VEN130 Stand Fan with Timer, P206VEN130, P206VEN130 Fan with Timer, Stand Fan with Timer, Stand Fan, Fan with Timer, Timer Fan, Fan

References

-  [Home - Beper](#)