



BEOK TCR7 Series RGB Colorful LCD Screen Smart Thermostat Instruction Manual

[Home](#) » [BEOK](#) » BEOK TCR7 Series RGB Colorful LCD Screen Smart Thermostat Instruction Manual 

Contents

- [1 BEOK TCR7 Series RGB Colorful LCD Screen Smart Thermostat](#)
- [2 Product Overview](#)
- [3 Display Symbols](#)
- [4 Parameter](#)
- [5 User Operation](#)
- [6 RGB Colorful LCD Screen Smart Thermostat](#)
- [7 Connecting Diagram](#)
- [8 Documents / Resources](#)
- [9 Related Posts](#)



BEOK TCR7 Series RGB Colorful LCD Screen Smart Thermostat

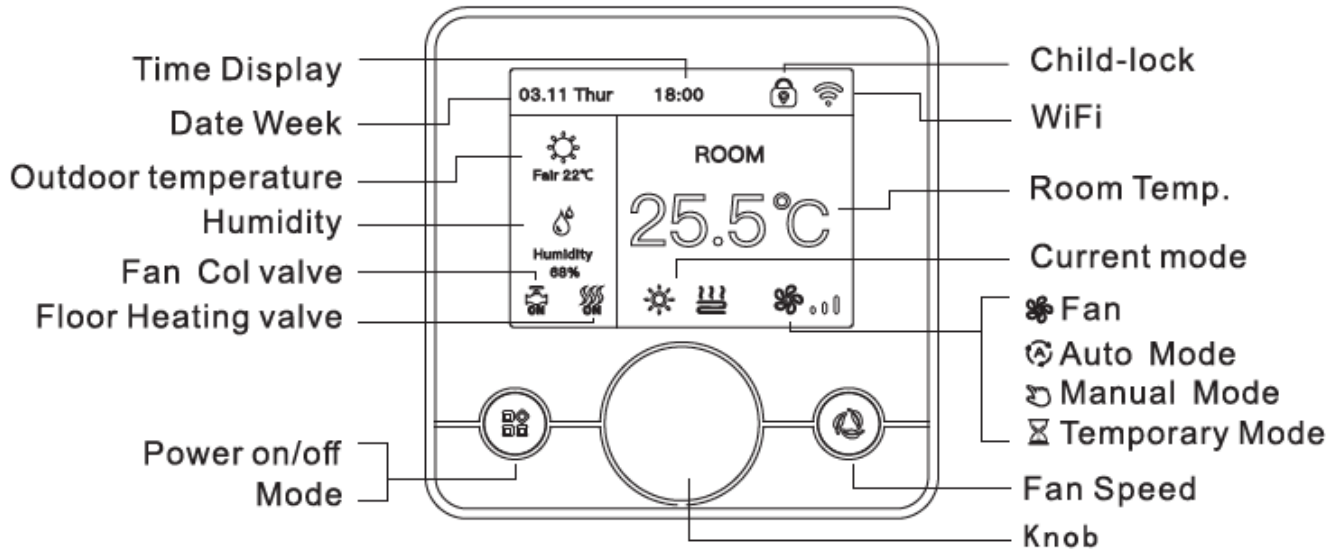


Product Overview

This series of thermamost has Floor Heating, Fan Cal, and integrated vision, meeting the requirement under different sonerios

Version	System mode	Model	Application
Floor heating	Heating	EP	Built-in & floor sensor, floor limit sensor+ Weekly programming
		WP	A NC/NO dual-output+ Weekly programming
		WPB	A NC /NO dual-output+ Weekly programming+ Potential-free output
Fan Coil	Heating /Cooling/ Ventilation	Ac2	Timer task+ 2-pipe system
		Ac2-485	'Timer task + 2-pipe system+ 485Modbus (optional)
		Ac4	'Timer task + 4-pipe system+ 485Modbus (optional)
Integrated	Heating/ Cooling/ Ventilation /Floor heating / Floor heating+ Heating	AWY	Floor heating & fan coil, weekly programming + Potential-free output + Timer task + 485Modbus (optional)+ Door card (optional)

Display Symbols



Temperature Control Mode(Floor Heating/Integrated)

• Auto Mode

Weekly-DRC:ted program, up to 6 heating events can be set per day. Heading events, workdays and temperature can be separately customized based on personal routines.

• Manual Mode

The thermostat works based on manually-set temperature, disconnecting from auto mode.

• Temporary Mode

Thermostat wor1al based on manually-set temperature temporarily and tllen shifts beck to auto mode till next event.

Parameter

- Supply voltage AC100~240V;50~60Hz
- Power consumption 1W Max (Wi-Fi 3W Max)
- Temp. setting range 5~95°C
- Floor limited range 20~90°C
- On/off deviation 0.5~10°C, Factory setting $\pm 1^\circ\text{C}$
- Ambient temperature -5~50°C
- Protection level IP20 Anti-Flammable PC

User Operation

- **Power on/off:** Press 18 shortly to tum on/off the thermostat.
- **Temp setting:** Relate handwheel' O 'to change the set temperature by 0.5°C.
- **system article:** Presa • ~ • shortly to switch cooling/heating/ventilation. (Fan Coll)
 - press 18 shortly to switch CDOLinglheeting/venliletionlfloor heating/ floor healing+ healing. (Inlagralad)
 - Enter menu: Press 'Q ' enter the menu Interface.

- **Temp control mode:** Press • 83 • shortly ID swild1 manual/auto mode. (Floor heating)
 - Press • 1' • shortly ID swild1 manual/auto mode. (Inlllgral8d, floor heating)
- **Child-lock:** Press' M '+ • gg "f0r 3 se,,onds to ac:tlvate child-lock.

Auto-mode Setting

When device i& off, press • O • to enlarge menu page, choose “period selling’ ID set pa, monetary, then pr9SS ‘C) • to -and axil.

Events		Time		Temperature	
		Default value	Modify	Default value	Modify
Workdays	Sunrise	06:00	0 ;:a i CT OJ :J :C;; CT ffi.	20°C	0 ;:a i CT OJ :J :C;; CT ffi.
	Morning	08 :00		15 °C	
	Nooning	11 :30		15 °C	
	Afternoon	12:30		1 5 °C	
	Evening	17 :00		2 2 °c	
	Night	22 :00		15 °C	
Weekends	Sunrise	06 : 0 0		2 0 ° C	
	Night	22 :00		15 °C	

Advanced Setting (Usually for Professional Technicians)

Choose “advanced 8811ing’ on menu page and put in p868WOI’d 123456 to enter advanced selling page, set parameters then press ·o· to save and exit

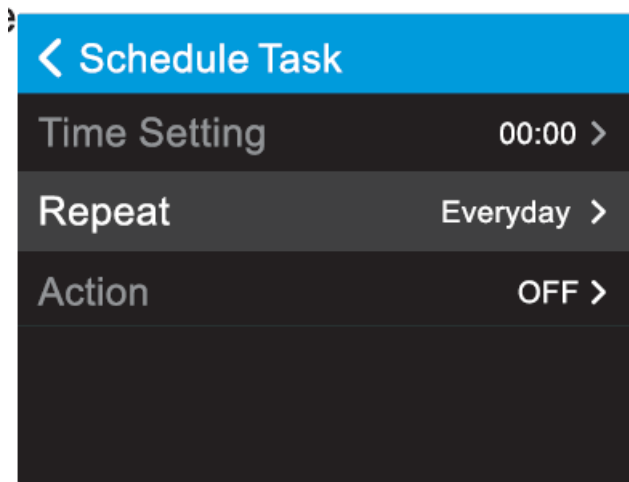
Meaning	0 Rotate handwheel	Default value
Sensor Mode	Built-in Sensor Floor Sensor Built-in Control&Floor Limitation	IN
Burt-in Sensor Calibration	-5-5°C	– 3 °C
Burt-inMaxSettingValue	5- 95 °C	50 °C
Floor Max Setting Value	10- 95 °C	50 °C
Limitation Value	20- 95 °C	35 °C
Output Jitter Control	0- 5 °C	1 °C
Anti-Freeze Protection	ON/ OFF	OFF
Linkage Mode	Non inverting Inverting Inverting Inverting and Anti-Freeze closed	Noninverting
Linkage lime Delay	0-5Min	0Min
Weekday Mode	Monday to Friday/Monday to Saturday /Mondyato Sunday/	2-day
Boot Type	Function Off/Function On/Function Saved	OFF
Temperature Unit	°F /° C	°C
Child Lock Type	None Lock All All but power	None
Control Mode	All/Air/Floor	Floor
Cloud Region	CN / US / EU	CN
Reset All Settings	/	/

RGB Colorful LCD Screen Smart Thermostat

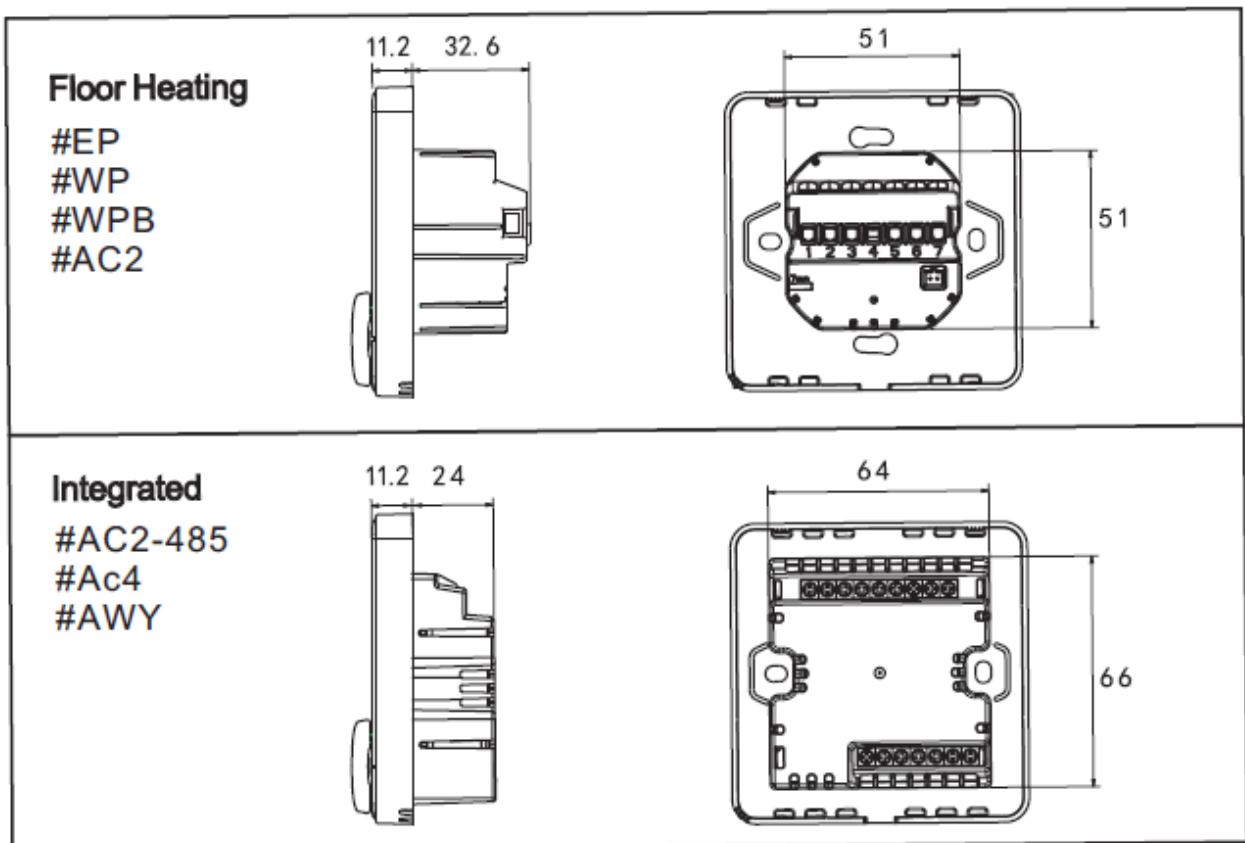
Sensor failure

Please select work mode of sensors correctly. When It shows EO/E1 error, the thermostat will stay power-off till the error is eliminated.ED: the built-in sensor is short-circuited or disconnected. E1: floor sensor is short-circuited or disconnected.

Timer Task Setting (Fan Coil/Integrated) Press” Q “to enter the menu. Tum the knob” Q “, choose “Auto Mode”, and then choose “Schedule”. Set the parameters by turning the knob, then press” gg • to save and exit to home page



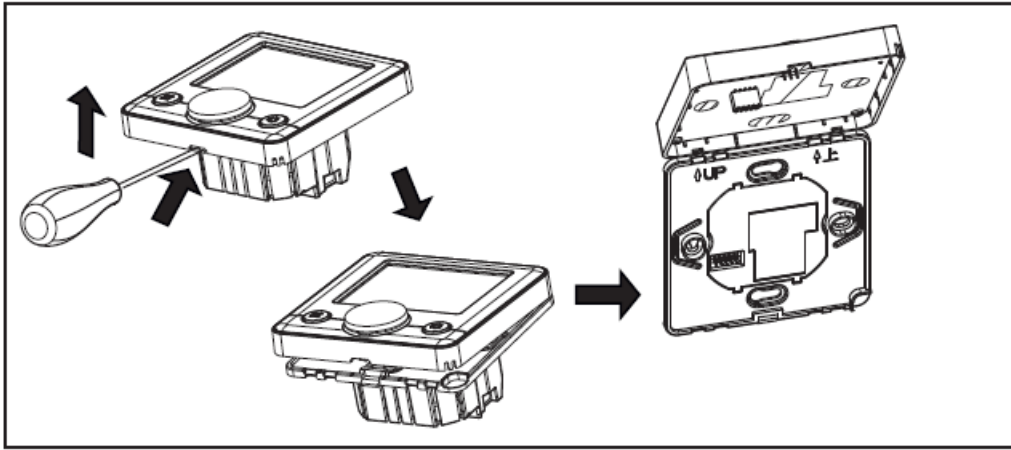
Dimensions (Unit: mm)



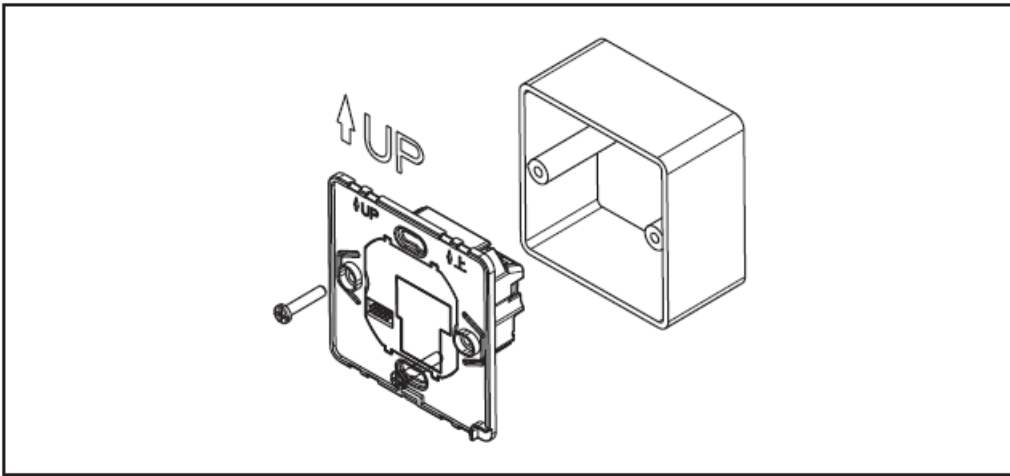
Mounting Steps

The thermostat adopts a pre-guide and limited snap-fit design. It is easy to mount.

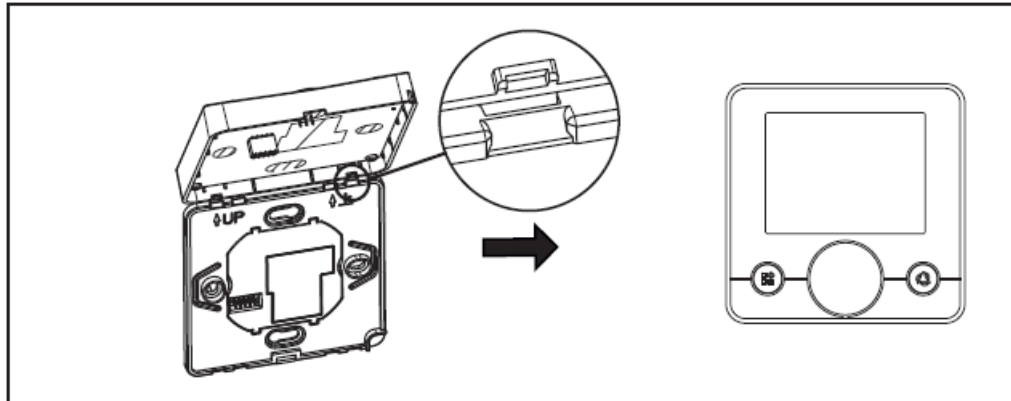
1. Release the front cover by inserting a head screw-driver into the bottom crack.



2. Insert the wires and then fix these wires with screws. The suggested wire-stripping length is 7-9mm.
3. Mount backing plate into wall-cassette, put screws and then fix the thermostat. Make sure that the thermostat is fixed without deformation. Suggested torque is 0.2-0.4N.m (2.0-4. 1kgf.cm).



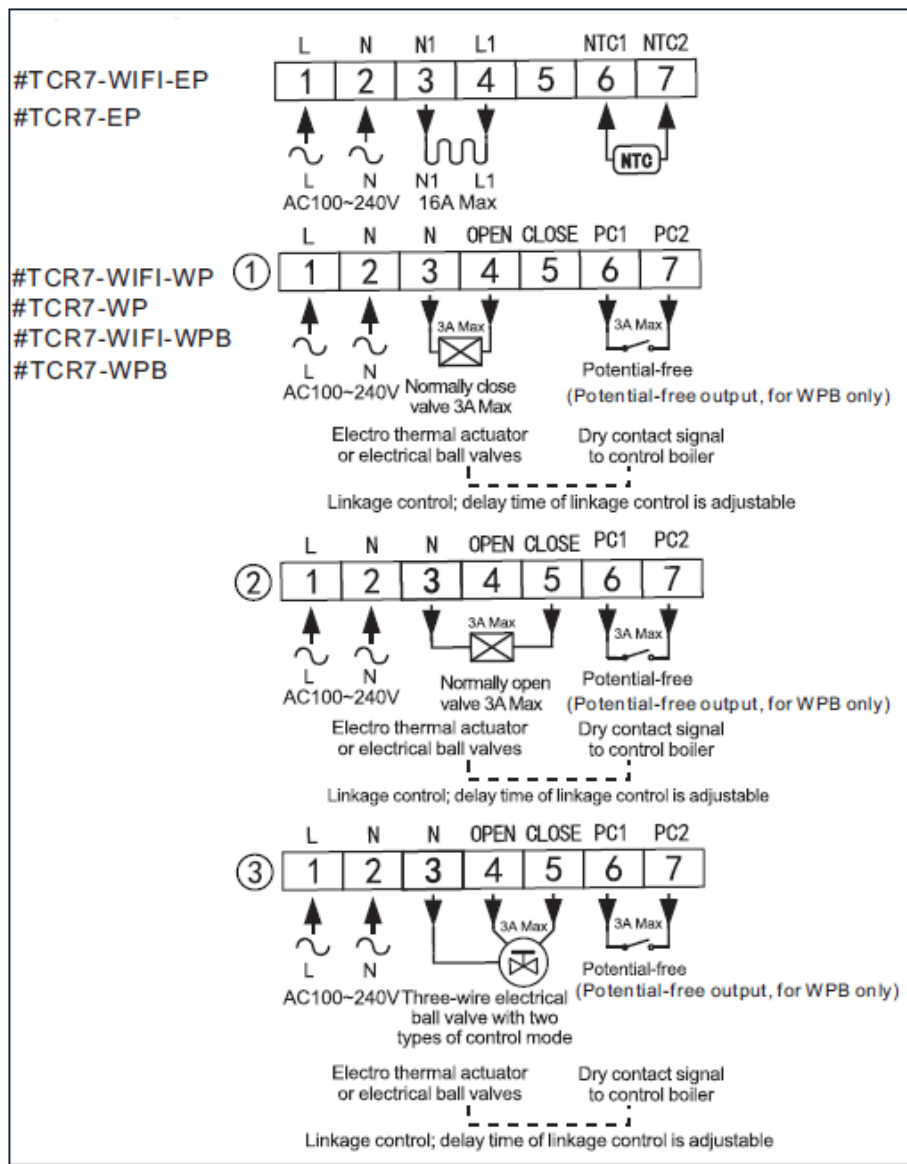
4. Re-mount the front cover via snap-fit connection.



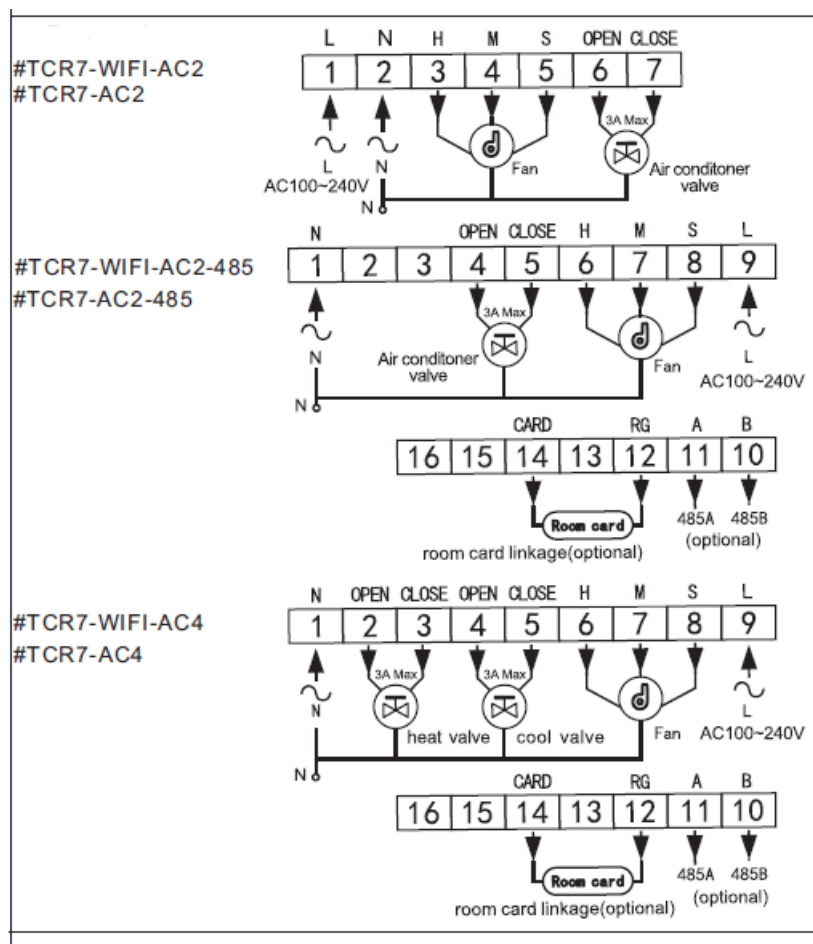
Connecting Diagram

The thermostat operates in full capacity in areas with the altitude of less than 2500 above sea level. Power rating of external load should be less than or equal to 80% rated power of the thermostat in areas with altitude of 2500m to 4200m.

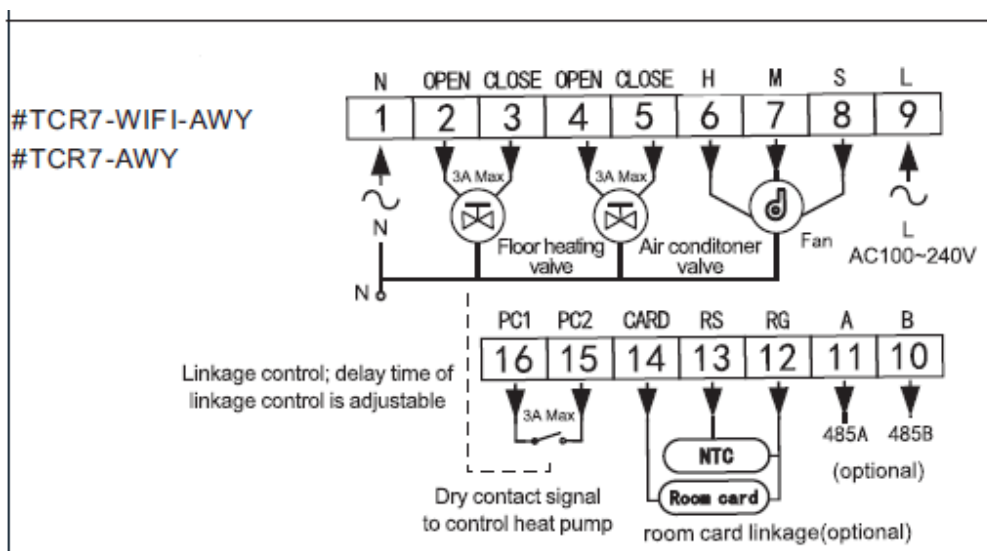
Floor Heating



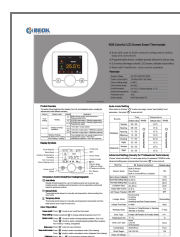
Fan Coil



Integrated



Documents / Resources



[BEOK TCR7 Series RGB Colorful LCD Screen Smart Thermostat](#) [pdf] Instruction Manual
tcr7-wifi-ep, tcr7-wifi-wp, tcr7-ep, tcr7-wp, tcr7-wifi-wpb, tcr7-wpb, tcr7-wifi-ac2, tcr7-ac2 tcr7-wi
fi-ac2-485, tcr7-ac2-485, tcr7-wifi-ac4, tcr7-ac4, TCR7 Series RGB Colorful LCD Screen Smart
Thermostat, TCR7 Series, RGB Colorful LCD Screen Smart Thermostat