



BenQ W1050 Digital Projector User Guide

[Home](#) » [BenQ](#) » BenQ W1050 Digital Projector User Guide 

Contents

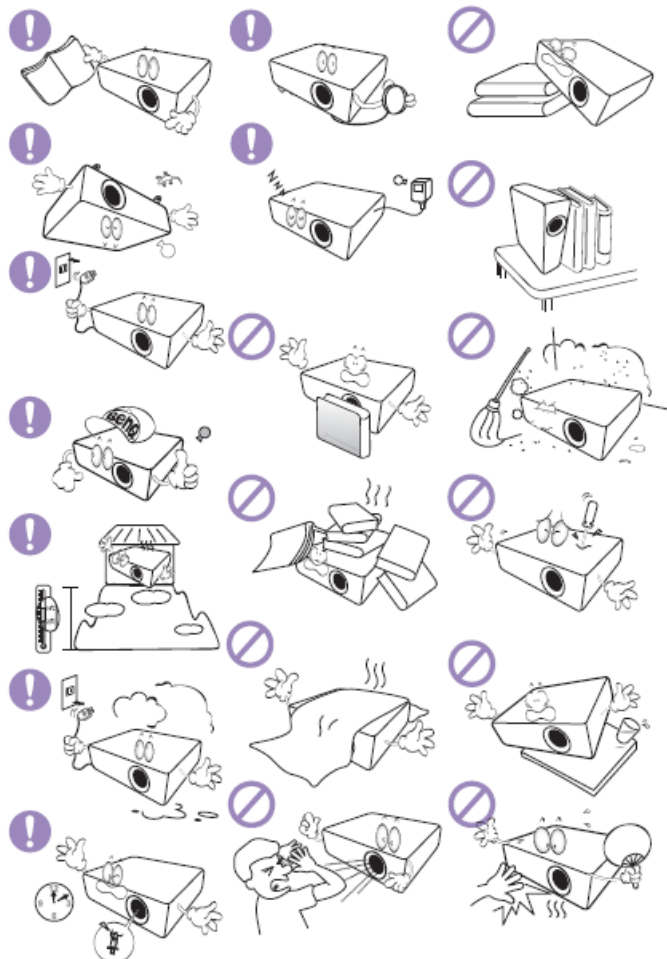
- [1 BenQ W1050 Digital Projector](#)
- [2 Quick Start Guide](#)
- [3 Remote control](#)
- [4 Projector dimensions](#)
- [5 Specifications](#)
- [6 Documents / Resources](#)
 - [6.1 References](#)
- [7 Related Posts](#)

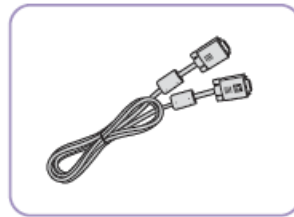
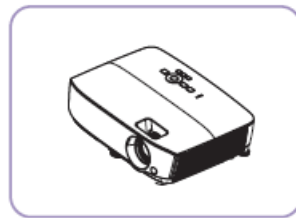


BenQ W1050 Digital Projector

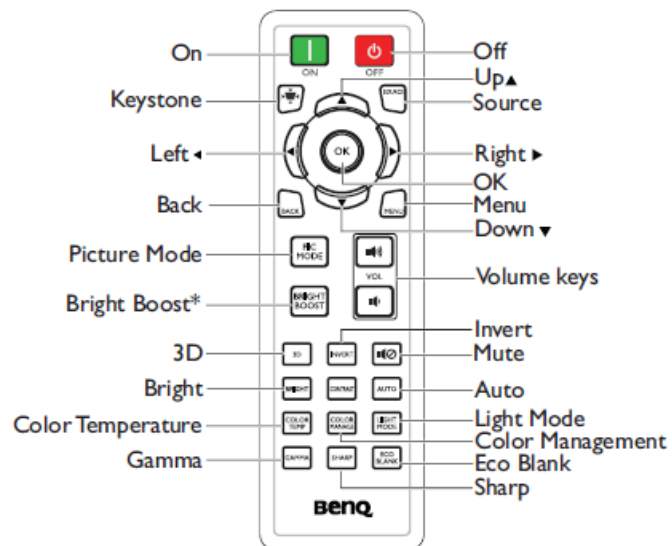


Quick Start Guide

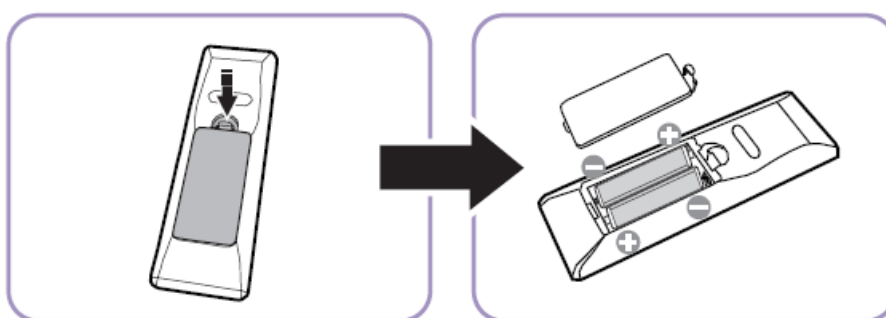


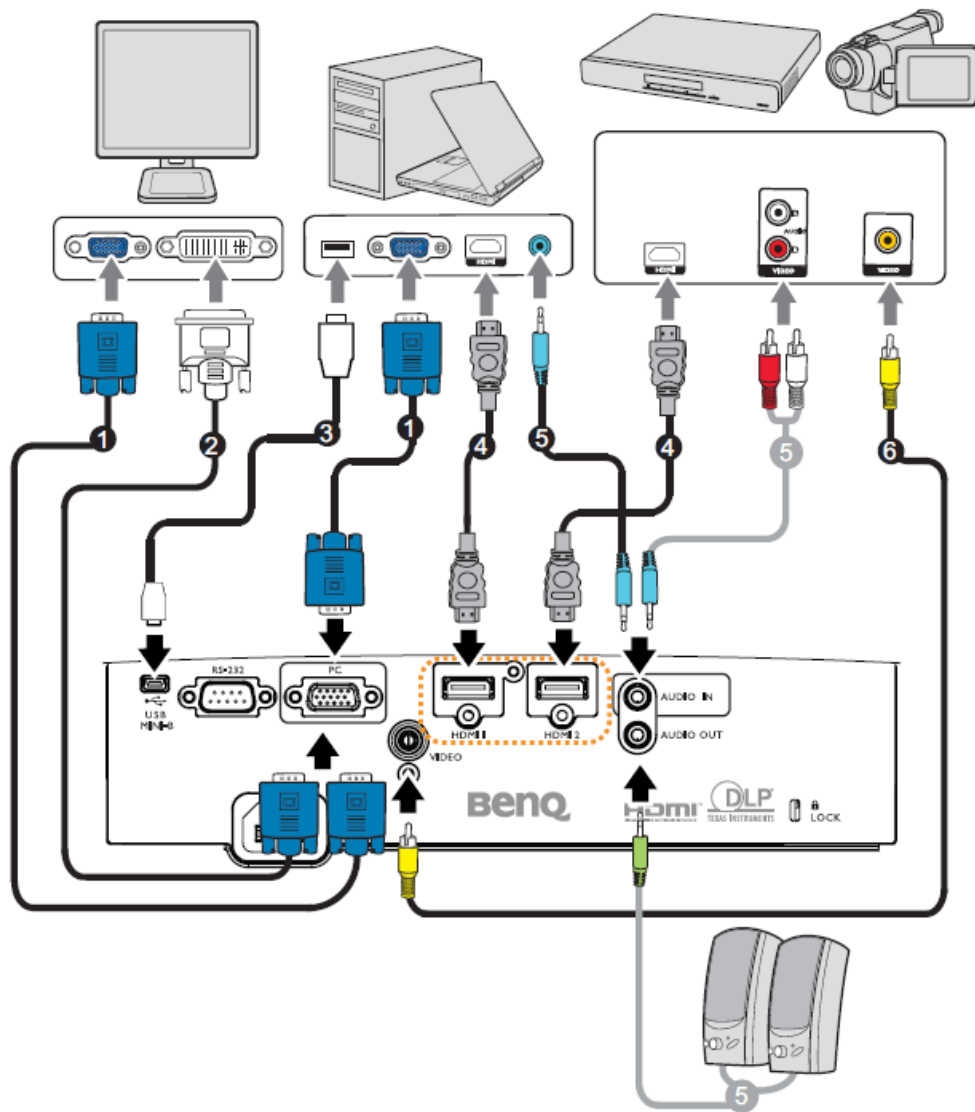


Remote control

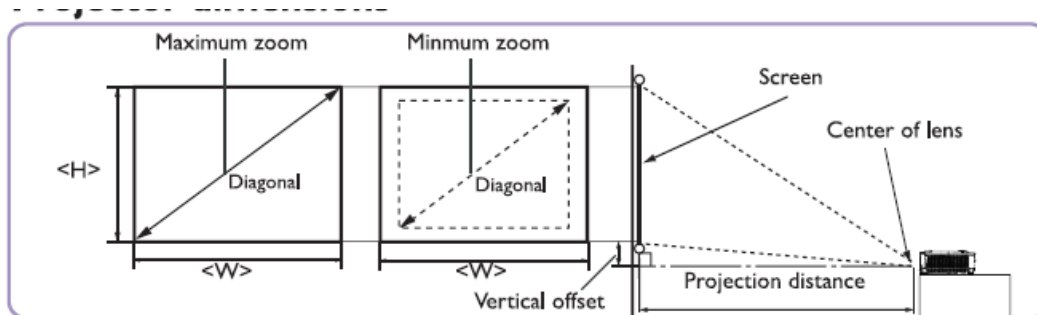


*Bright Boost is not supported by this model.





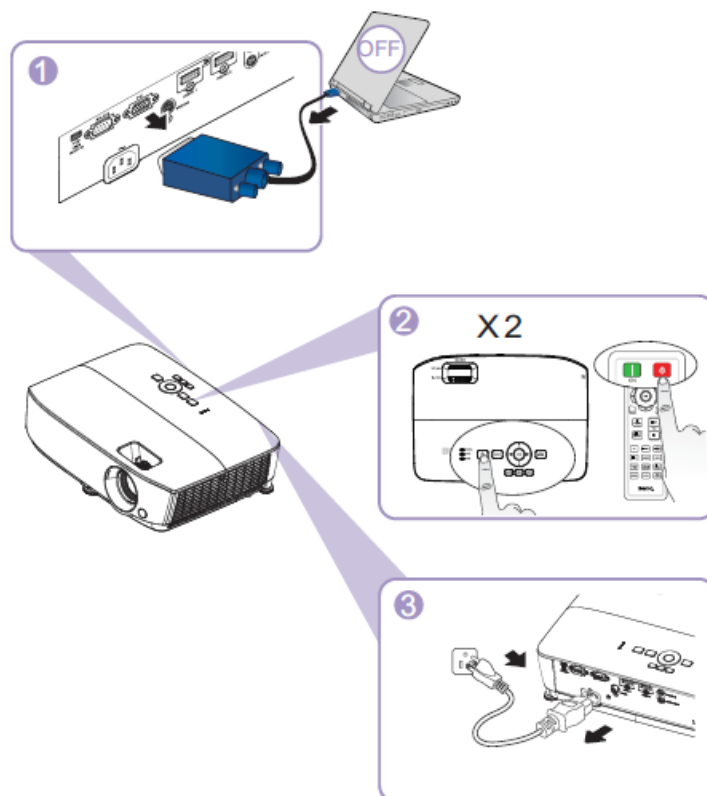
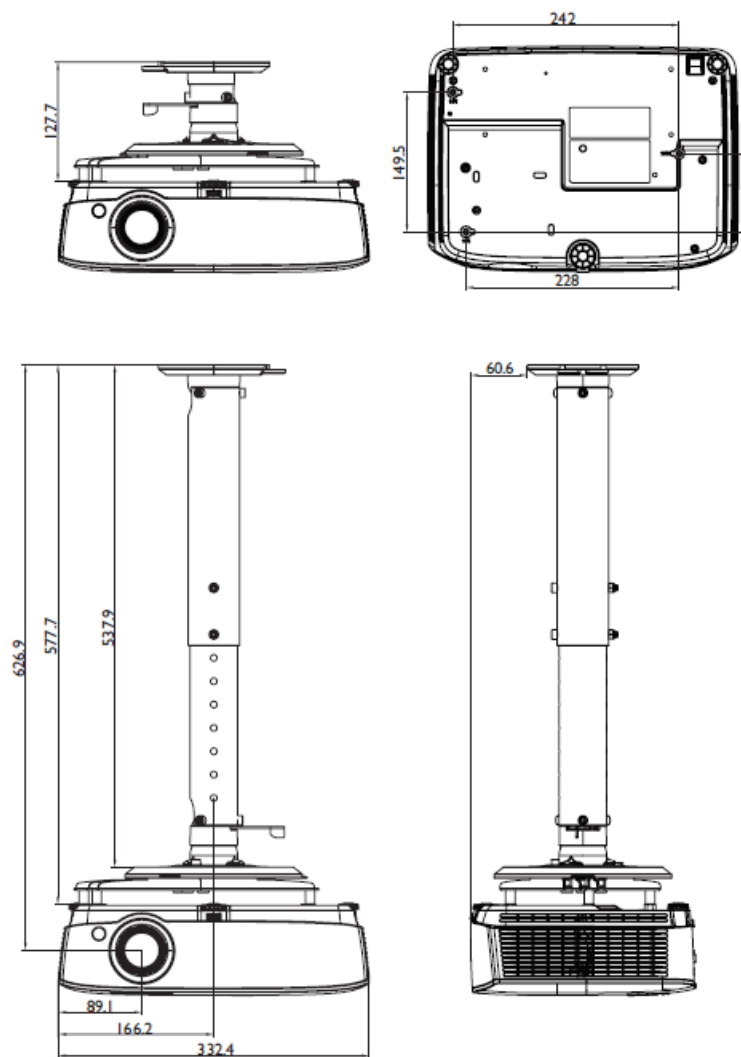
Projector dimensions

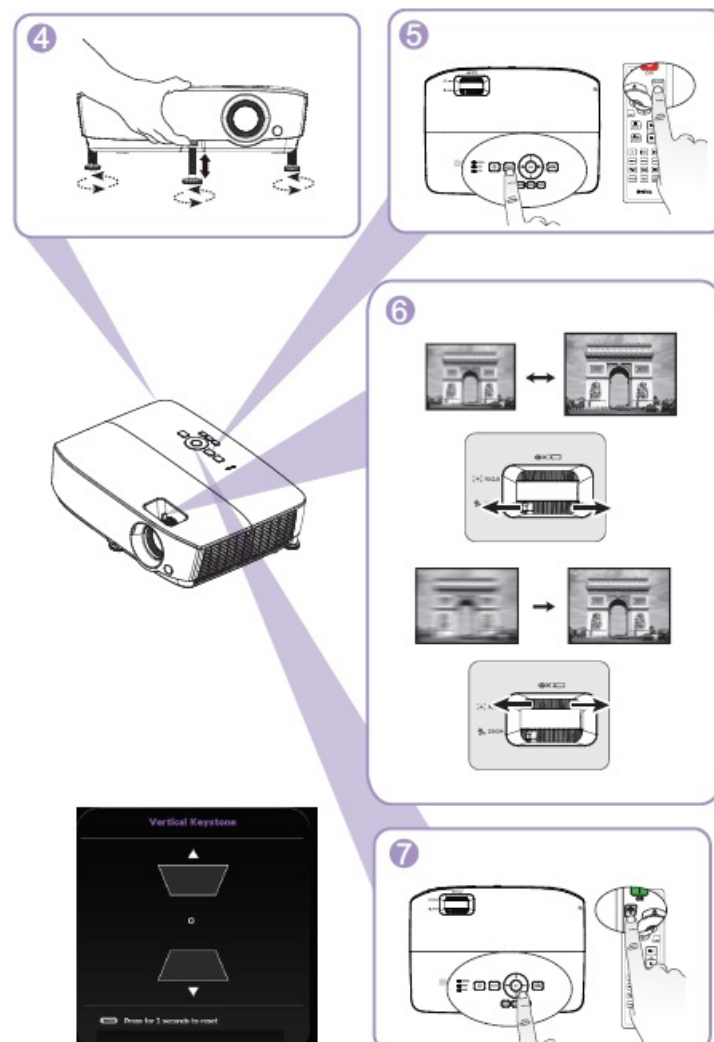
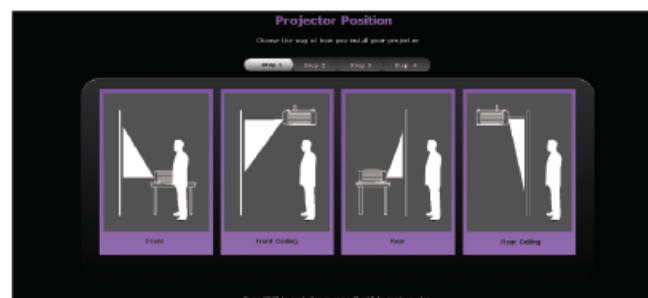
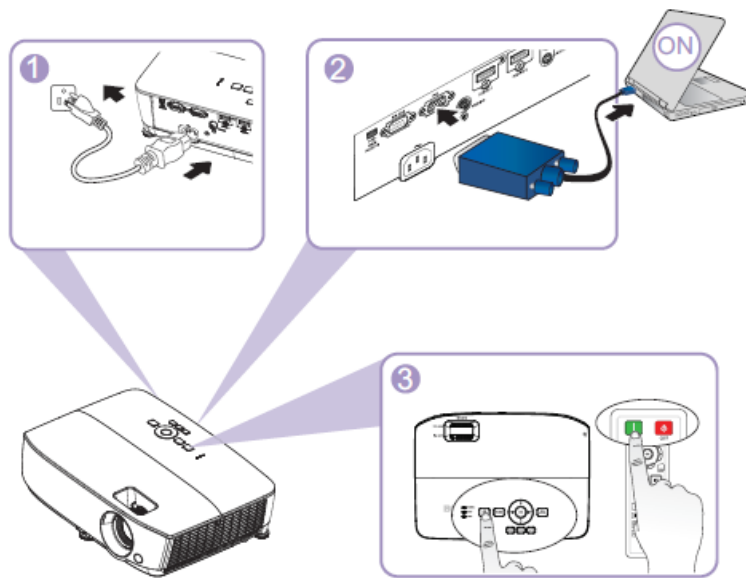


Screen size				Distance from screen(mm)			Vertical offset (mm)
Diagonal		W (mm)	H (mm)	Min length	Average	Max length	
Inch	mm			(max. zoom)		(min. zoom)	
30	762	664	374	881	977	1074	26
35	889	775	436	1037	1149	1262	31
40	1016	886	498	1192	1321	1450	35
50	1270	1107	623	1502	1664	1826	44
60	1524	1328	747	1813	2008	2202	52
80	2032	1771	996	2435	2695	2955	70
100	2540	2214	1245	3057	3382	3708	87
120	3048	2657	1494	3678	4069	4460	105
150	3810	3321	1868	4610	5100	5589	131
200	5080	4428	2491	6164	6817	7471	174
220	5588	4870	2740	6785	7504	8223	192
250	6350	5535	3113	7718	8535	9352	218
300	7620	6641	3736	9271	10253	11234	262

The above numbers are approximate and may be slightly different from the actual measurements. Only the recommended screen sizes are listed. If your screen size is not in the table above, please contact your dealer for assistance.

Ceiling mount screw: M4 (Max L = 25 mm; Min L=20 mm) Unit: mm





Specifications

Optical

Resolution

1920 x 1080 1080p

Display system

I-CHIP DMD

Lens F/Number

F = 2.42 to 2.62

f = 19.0 to 22.65 mm

Offset

107±5%

Zoom ratio

1.2X

Lamp

210 W lamp

Electrical

Power supply

AC100–240V, 2.60 A,

50-60 Hz (Automatic)

Power consumption

260 W (Max); < 0.5 W (Standby)

Mechanical

Weight

2.56 kg (5.64 lbs)

Output terminals

Speaker

(Stereo) 2 watt x 1

Audio signal output

PC audio jack x 1

Control

RS-232 serial control

9 pin x 1

IR receiver x 1

USB mini-B x 1

Input terminals

Computer input

RGB input

D-Sub 15-pin (female) x 1

Video signal input

RCA jack x 1

Digital signal input

HDMI x 2

Audio signal input

Audio in

PC audio jack x 1

Environmental Requirements

Temperature

Operating: 0°C-40°C at sea level

Storage: -20°C-60°C at sea level

Relative humidity

Operating: 10%-90% (without condensation)

Storage: 10%-90% (without condensation)

Altitude

Operating: 0-1499 m at 0°C-35°C; 1500-

3000 m at 0°C-30°C (with High Altitude

Mode on)

Storage: 0-12200 m at 30°C

Transporting

Original packing or equivalent is recommended.

Repairing

Please visit below website and choose your country to find your service contact window.

<http://www.benq.com/welcome>


Lamp life results will vary depending on environmental conditions and usage.

For further information, please refer to the enclosed user manual.

eCOFACTS csr.BenQ.com

- Arsenic-free optical glass
- BFR/PVC-free casing plastics
- PVC-free plastic packaging
- Verre optique exempt d'arsenic
- Boîtier de plastique exempt de BFR/PVC
- Emballage de plastique exempt de PVC

Documents / Resources

<div><p>W1050 / W1050S / HT1070A Digital Projector Quick Start Guide</p><p>Tous les renseignements relatifs au projeteur sont disponibles sur le site Web de BenQ. Pour en savoir plus, visitez le site Web de BenQ. Tous les droits de propriété intellectuelle sont réservés. BenQ et le logo BenQ sont des marques déposées de BenQ Corporation. Tous les autres noms de produits ou de services sont des marques déposées de leurs propriétaires respectifs. BenQ Corporation, 100, Sec. 2, Roosevelt Rd., Taipei 106, Taiwan. © 2014 BenQ Corporation. Tous droits réservés.</p></div>	<div><p>BenQ W1050 Digital Projector [pdf] User Guide</p><p>W1050 Digital Projector, W1050, Digital Projector, Projector</p></div>
--------------------------------------------------------------------------------------------------------------------------------------------------------------------------------------------------------------------------------------------------------------------------------------------------------------------------------------------------------------------------------------------------------------------------------------------------------------------------------------------------------------------------------------------------------------------------------------------------------------------------------------------------------------------------------------	----------------------------------------------------------------------------------------------------------------------------------------------------

References

- [User Manual](#)

Manuals+ Privacy Policy

This website is an independent publication and is neither affiliated with nor endorsed by any of the trademark owners. The "Bluetooth®" word mark and logos are registered trademarks owned by Bluetooth SIG, Inc. The "Wi-Fi®" word mark and logos are registered trademarks owned by the Wi-Fi Alliance. Any use of these marks on this website does not imply any affiliation with or endorsement.