

BenQ RE Series Interactive Flat Panel User Guide

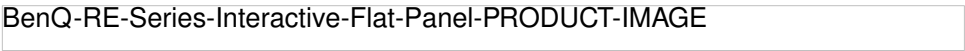
[Home](#) » [BenQ](#) » BenQ RE Series Interactive Flat Panel User Guide

Contents [[hide](#)]

- [1 BenQ RE Series Interactive Flat Panel](#)
- [2 Package contents](#)
- [3 Documents / Resources](#)
- [4 Related Posts](#)

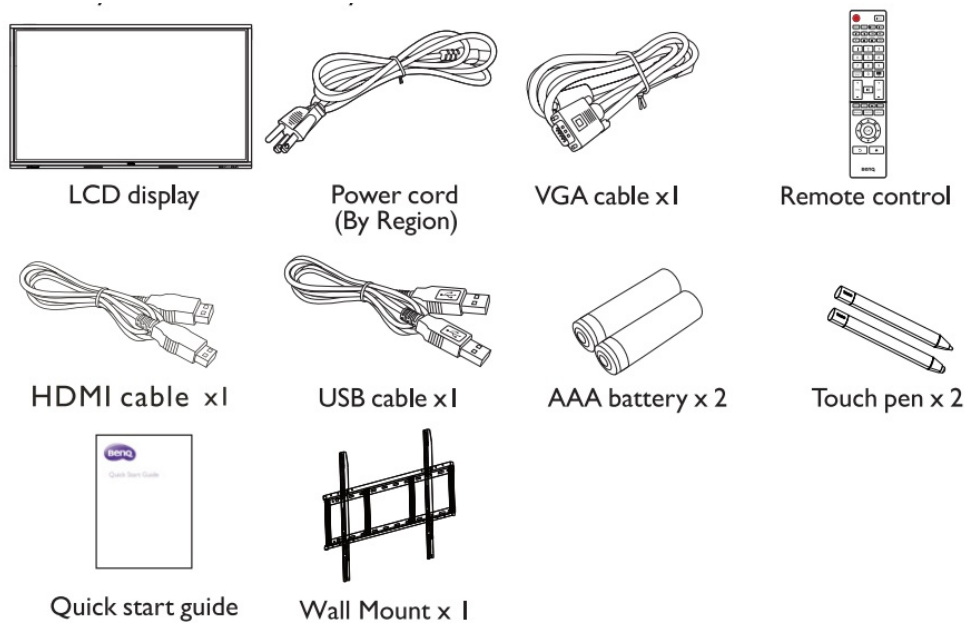


BenQ RE Series Interactive Flat Panel

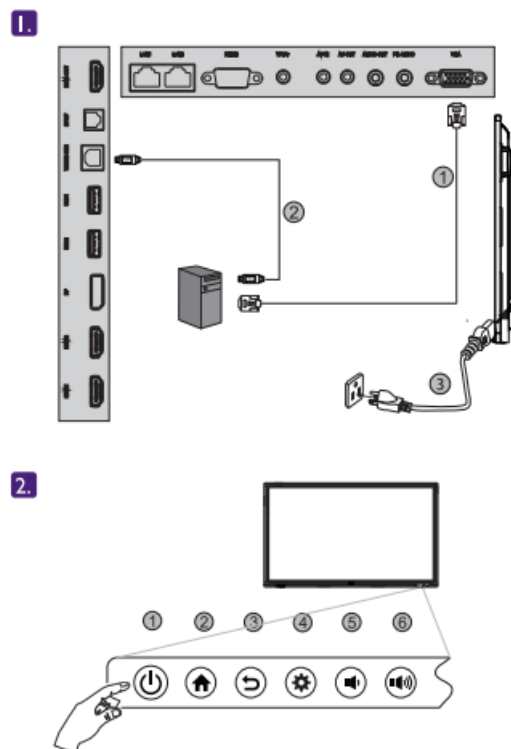


Package contents

Open the sales package and check the contents. If any item is missing or damaged, please contact your dealer immediately.



Available accessories and the pictures shown here may differ from the actual contents and the product supplied for your region.



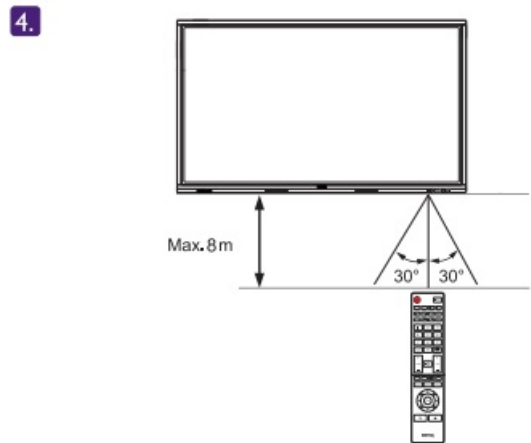
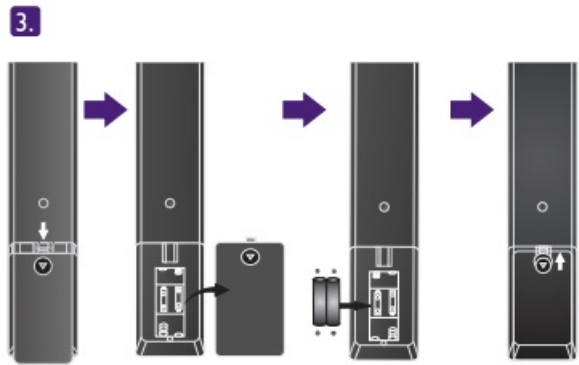
1. Connecting the display to a computer. Connecting power.

1. OVGA (I5-pin) cable
2. Touch USB cable
3. Power cord

2. Control panel

1. Power
2. Home
3. Return
4. Menu
5. Volume down

6. Volume up



- 3. Installing remote control batteries
- 4. Using the remote control For the user manual, visit <https://www.benq.com/eon-in/support>

To prevent personal injuries, mounting the display or installing desktop stands is required before use.

- Native Resolution 3840 x 2160

Documents / Resources

	BenQ RE Series Interactive Flat Panel [pdf] User Guide RE650I RE750I RE860I RE980I Interactive Flat Panel, RE650I, RE750I, RE860I, RE980I, Interactive Flat Panel, Flat Panel, Interactive Panel, RE Series Interactive Flat Panel, Interactive Flat Panel
--	---