



# BenQ RD320U, RD320UA LCD Monitor Instruction Manual

[Home](#) » [BenQ](#) » BenQ RD320U, RD320UA LCD Monitor Instruction Manual 

## Contents

- [1 BenQ RD320U, RD320UA LCD Monitor](#)
- [2 Disassembly Tools](#)
- [3 Product exploded view](#)
- [4 External cable](#)
- [5 Product Disassembly](#)
- [6 Recycle characteristics](#)
- [7 Disassembly Time](#)
- [8 FAQ:](#)
- [9 Documents / Resources](#)
  - [9.1 References](#)
- [10 Related Posts](#)






**BenQ RD320U, RD320UA LCD Monitor**



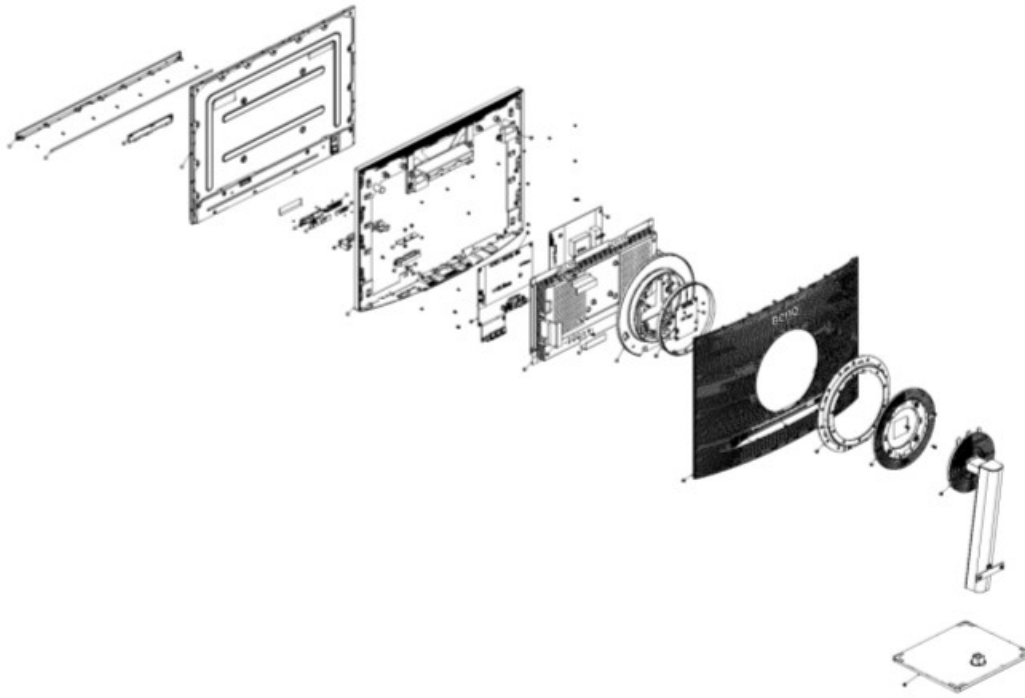
### Specifications:

- Product Name: LCD Monitor
- Model No.: RD320U, RD320UA

### Disassembly Tools

Tool	picture
Philips Screwdriver for M3 Screw	
Nosed Pliers	
Diagonal Cutting Pliers	
Slotted screwdriver	
Six Point Sockets	
Philips Screwdriver for M2.5 Screw	
Knife	

## Product exploded view



**Table 1 Disassembly parts list**

Item	Description	Item	Description
1	DECO	16	POWER_BOARD
2	DECO_SPONGE	17	MAIN FRAME
3	BI_LENS	18	SAFETY MAYLAR
4	PANEL	19	LED RING HOLDER
5	SAFETY MYLAR	20	RING_FPC
6	TOUCH_KEY_COVER	21	DRIVER_BOARD
7	TOUCH_KEY_PCB	22	REAR_COVER
8	BI HOLDER	23	LIGHT LENS
9	PXY_PCB	24	VESA COVER
10	TOUCH KEY HOLDER	25	STAND /VESA ASSY
11	MIDDLE_FRAME	26	BASE ASSY
12	OSD_KEY	27	SPEAKER
13	NAVI_KEY	28	Connector
14	OSD_KEY_PCB	29	
15	SCALER_BOARD	30	

**Table 2 Screw**

Item	Description	Qty	Unit
S1	Screw D3X7 Pan W/C Nickel	8	PCS
S2	Screw-M4	1	PCS
S3	Screw-M3X6	8	PCS
S4	Screw-M2X3	6	PCS
S5	Screw M3X4 Flat Nickel	17	PCS
S6	Screw M4X10 Flat Nylok Black Zinc	8	PCS
S7	Screw Q3X6 Pan Nickel	16	PCS
S8	Screw M3X6 Flat CR3 Black Zinc	2	PCS
S9	Screw Q3X8 Pan CR3 Black Zinc	2	PCS
S10	Screw M4X8 Flat W/W Nickel	1	PCS
S11	Screw-M3X6	2	PCS

External cable



External cable			
Item	Description	Qty	Unit
P1	Power cable	1	PCS
P2	USB-C cable	1	PCS
P3	HDMI cable	1	PCS
P4	USB 3.2 Gen1 cable	1	PCS

## Product Disassembly

Place the monitor face down on a smooth surface first.

### 1. Detach the monitor stand and base.

- Release the thumbscrew on the bottom of the monitor base and detach the base.
- 



Push the button to remove the stand assy.



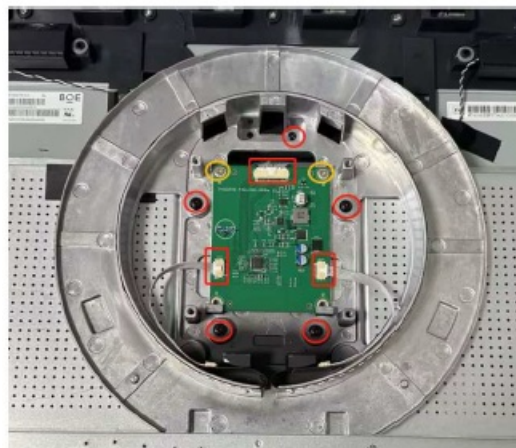
### 2. Remove the back cover.

- Release the screws first and use the tool (not provided) starting from the top of monitor to open all the latches of the back cover slowly and carefully.

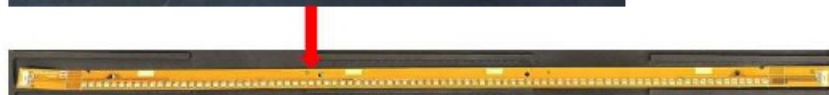
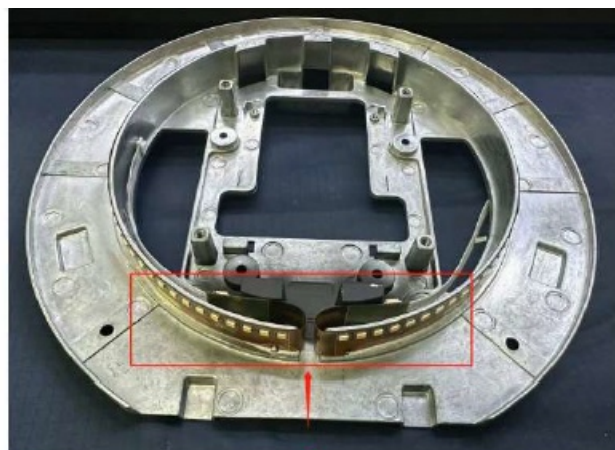


### 3. Remove Vesa plate and LED control board

- Release the screws first, disconnect the cables and remove Vesa Plate, LED control board from panel.



Note: DO NOT need to remove LED board which is adhesive to Vesa Plate.



### 4. Remove main frame and speaker from the panel.

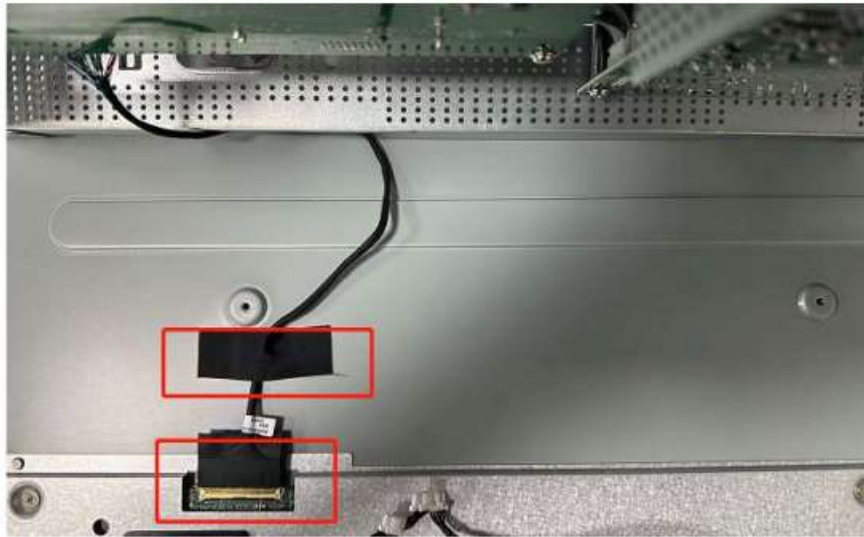
- Tear out tapes and mylar.



- Disconnect all the cables
- Release the screws.
- Lift up the main frame and disconnect the cable.
- Remove speakers.







5. Release screws to take out middle frame and bezel.



6. Separate the board from the main frame.

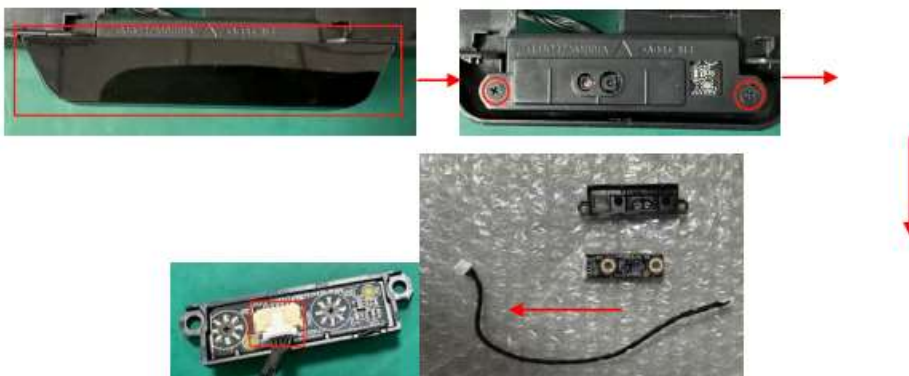
- Turn over the main frame and release all the screws to separate boards from main frame.





7. Take out the boards from middle frame with releasing the screws.

- Take out sensor cover, release the screws to detach sensor board from middle frame.



- Release screw, take out touch key lens first and detach touch board assembly from middle frame.



## 8. Detach key board from middle frame

- Release screws first, and detach touch key holder from middle frame.



- Release screws and take out key board.



## Recycle characteristics

Recycle characteristics Part	No.
Reuse	—
Recycle	1,2,3,5,6,7,8,10,11,12,13,17,18,19,20,22,23,24,25,26,27,28S1,S2,S3,S4,S5,S6,S7,S8,S9,S10,S11
WEEE annex VII	4,9,14,15,16,21, P1~P4
Recovery	—
Disposal	—

## Disassembly Time



