



## BenQ PD3205U LCD Monitor Instructions

[Home](#) » [BenQ](#) » BenQ PD3205U LCD Monitor Instructions 

### Contents

- [1 BenQ PD3205U LCD Monitor](#)
- [2 Product Information](#)
- [3 Materials and components with hazardous content](#)
- [4 Product Usage Instructions](#)
- [5 Disassembly Tools](#)
- [6 Disassembly Process](#)
- [7 Documents / Resources](#)



### BenQ PD3205U LCD Monitor



## Product Information

<b>Product Name:</b>	LCD Monitor
<b>Model No.:</b>	PD3205U, PD3205UE

Requirements according to ANNEX VII of DIRECTIVE 2012/19/EU on waste electrical and electronic equipment (WEEE)

## Materials and components with hazardous content

LCDs may contain hazardous substances like Pb and BFRs which are covered by exemptions under the RoHS directive. However, the majority is present in the printed circuit boards assembly. In order to reduce emissions as much as possible, a complete disposal of the old appliance is required. This treatment may only be performed in authorized handling plants.

Product Name: LCD Monitor








Model No.: PD3205U, PD3205UE

## Product Usage Instructions

To ensure proper disposal and recycling of the LCD Monitor, please follow the disassembly instructions below:

## Disassembly Tools

- Philips Screwdriver for M3 Screw
- Nosed Pliers
- Diagonal Cutting Pliers
- Slotted Screwdriver
- Six Point Sockets
- Philips Screwdriver for M2.5 Screw
- Knife

Tool	picture
Philips Screwdriver for M3 Screw	
Nosed Pliers	
Diagonal Cutting Pliers	
Slotted screwdriver	
Six Point Sockets	
Philips Screwdriver for M2.5 Screw	
Knife	

## Disassembly Process

The disassembly process should be carried out with caution.  
Please follow the steps below:

1. Ensure the LCD Monitor is disconnected from any power source.
2. Using the Philips Screwdriver for M3 Screw, remove all visible screws from the casing.
3. Use the Nosed Pliers and Diagonal Cutting Pliers to carefully detach any wires or connectors connected to the internal components.
4. Use the Slotted Screwdriver and Six Point Sockets to remove any additional screws or fasteners.
5. Using the Philips Screwdriver for M2.5 Screw, remove any remaining screws.
6. Use the Knife to carefully separate the casing and access the internal circuit boards.

**Note:** The disassembly process may take approximately 30 minutes to complete.

Once the LCD Monitor is disassembled, please ensure proper disposal according to the regulations in your region. It is recommended to dispose of the old appliance in authorized handling plants to minimize environmental impact.

### 1. Remove the stand base

Push the button to remove the stand base assy.



Remove the screw to remove the stand assy and the base assy.



## 2. Remove the rear cover

Remove the screws and pull apart beze-1 & rear cover.

Note: Be careful, the BIEZEIL CUP is easy to break. Bellow picture for reference.

Use a tool (like picture using) to open all latches.





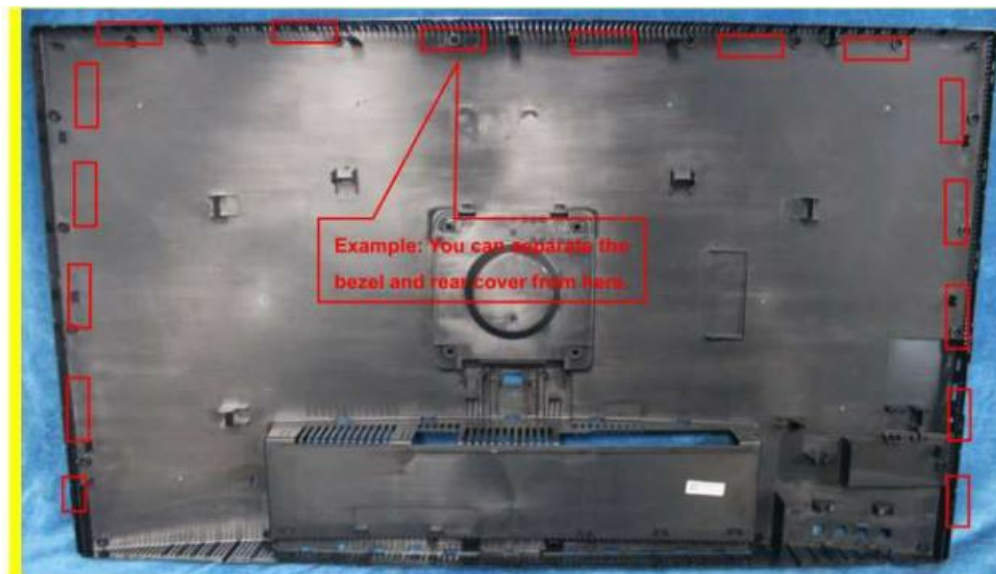
Disconnect the connectors to remove the rear cover.



Remove the screws and disconnect the connectors to remove the Keyboard and the Audio board.



**Note:** The positions of the clips on the rear cover are as follow. There are some small gaps between CLIPS. It's suggested to separate bezel and rear cover from the top.

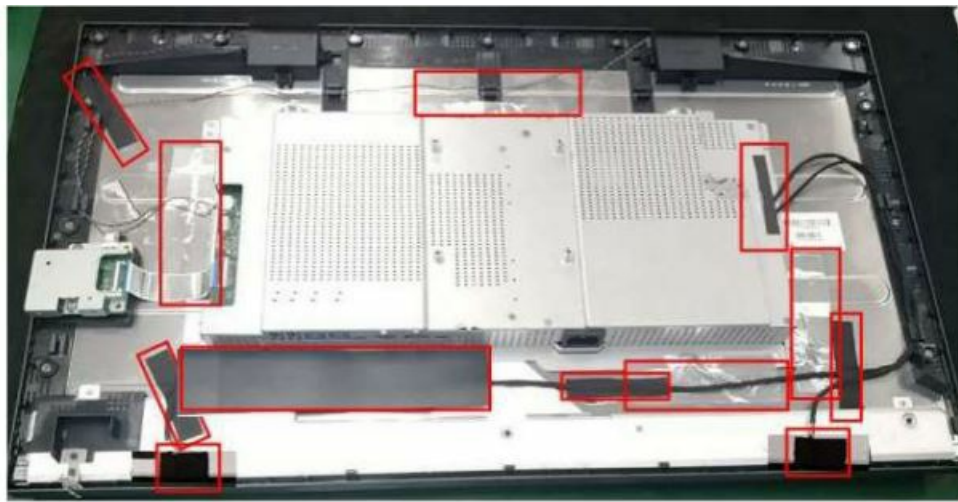


### 3. Remove the main frame from the panel

Remove the black wadded fabric and aluminum foil.

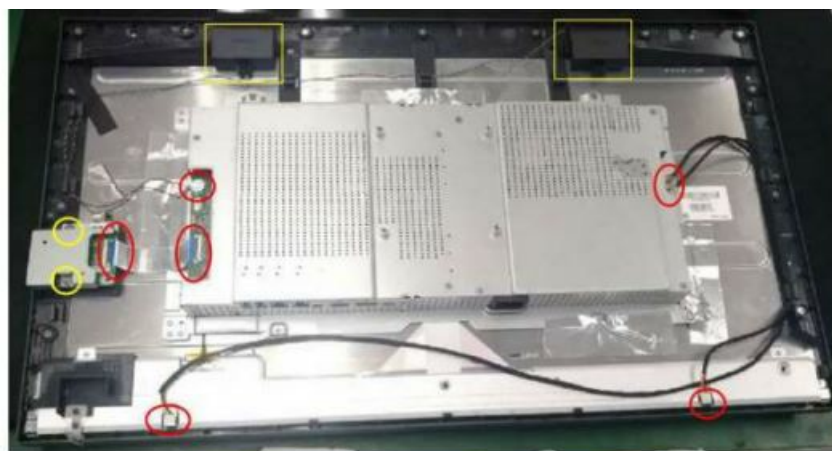
**Note:** When you assembled the ~CD, you must tidy the wire as follow picture





Disconnect the connectors. Remove the screws to remove USB board. Remove the speaker

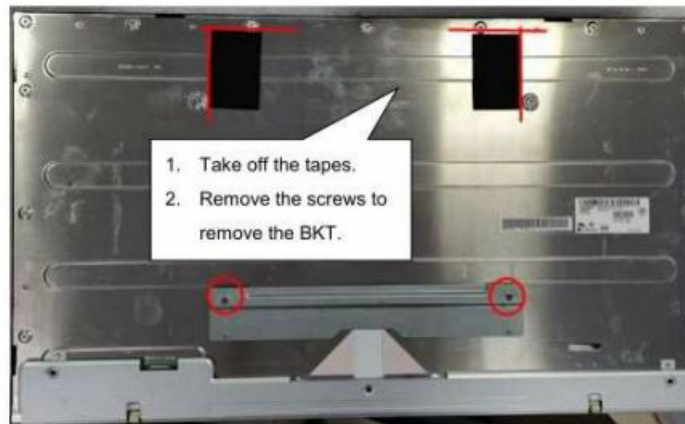
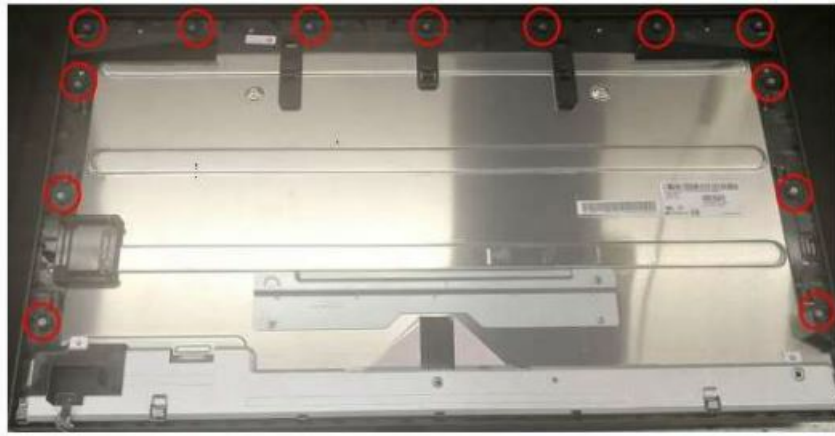
**Note:** When you assembled the LCD, you must tidy the wires as follow picture.



Remove the screws and disconnect the pin to remove the mainframe.

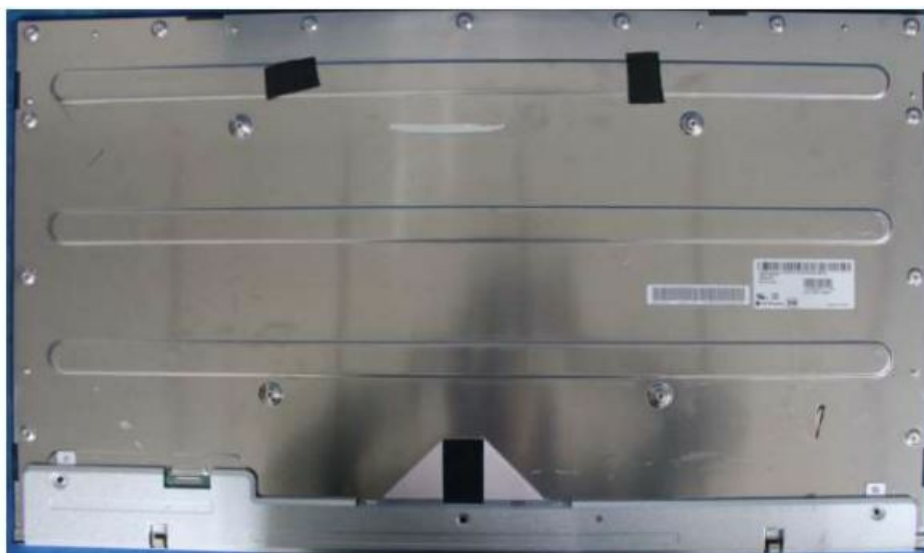


4. Remove the screws to separate the panel and the Middle Frame.



### Remove the panel

Note: Be course 'fhe panel i1s easy to broken, when we remove tihe panel. we- s.houl:d hold the iiron on l panel edge us,e two hands, at. tihe same time, and should avoid touching the• panel su1rfaoe.



5. Remove the screws and disconnect the connectors to remove the boards.



