



## BenQ LCD Monitor PD3200Q Recycle Disassemble Instructions

[Home](#) » [BenQ](#) » BenQ LCD Monitor PD3200Q Recycle Disassemble Instructions 



**Recycle Disassemble Instruction  
(Dismantled Information)**

**Requirements according to ANNEX VII of DIRECTIVE 2012/19/EU on waste electrical and electronic equipment (WEEE)**

### **Materials and components with hazardous content**

LCDs may contain hazardous substances like Pb and BFRs which are covered by exemptions under the RoHS directive. However, the majority is present in the printed circuit boards assembly. In order to reduce emissions as much as possible, complete disposal of the old appliance is required. This treatment may only be performed in authorized handling plants.

**Product Name:** LCD Monitor








**Model No.:** PD3200Q



## Contents

- [1 Disassembly Tools](#)
- [2 Disassembly process](#)
- [3 Documents / Resources](#)
- [4 Related Posts](#)

## Disassembly Tools

Tool	picture
Philips Screwdriver for M3 Screw	
Nosed Pliers	
Diagonal Cutting Pliers	
Slotted screwdriver	
Six Point Sockets	
Philips Screwdriver for M2.5 Screw	
Knife	

## Disassembly process

### 1. Remove the stand.

Holding the stand and press the button, and so you can remove the stand.



### 2. Remove the rear cover

Unscrew the screws from the rear cover.

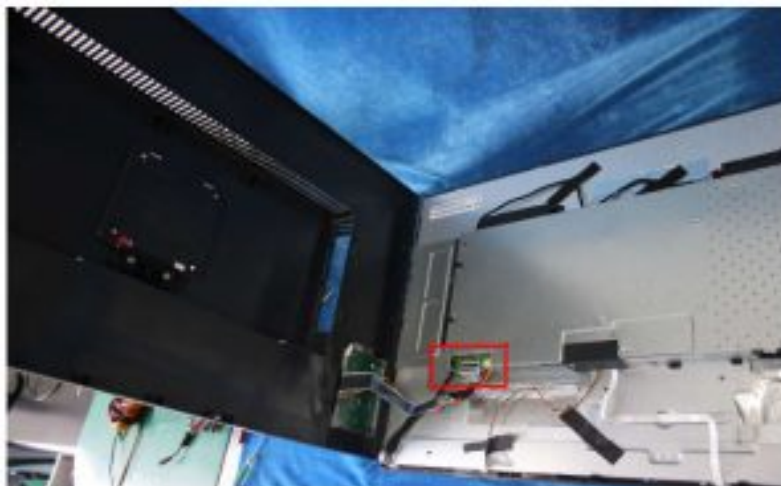


**Pull apart bezel & rear cover.**

**Note:** Be careful, the BEZEL CLIP is easy to break.



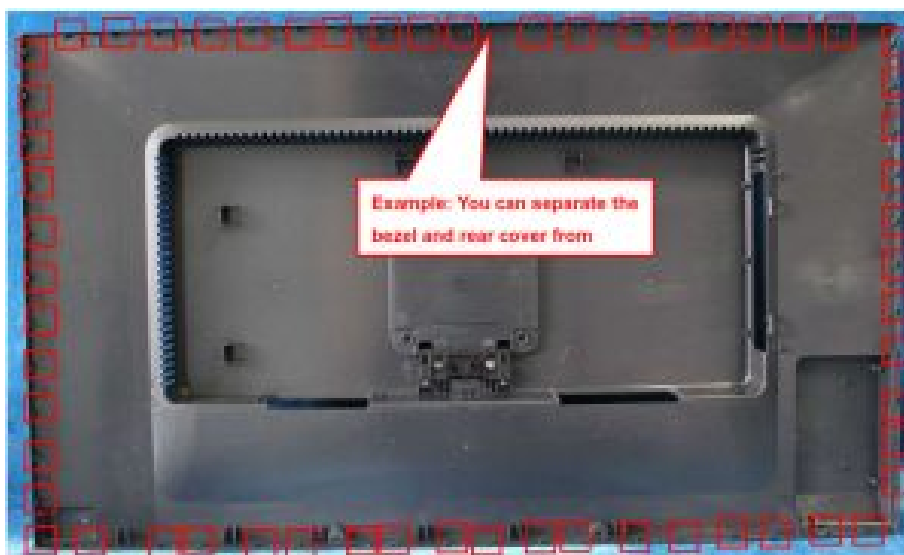
Disconnect the connectors as below to remove the rear cover.



Unscrew the screws and disconnect the connectors to remove the USB board,



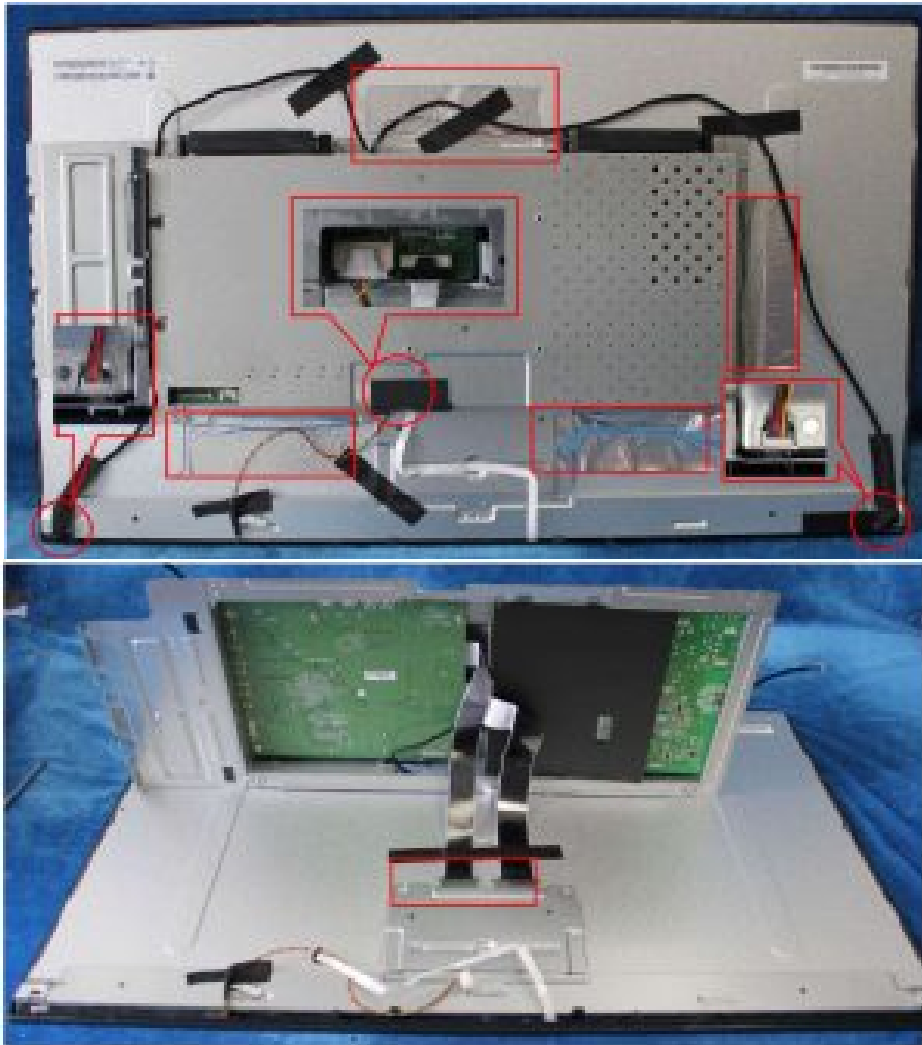
**Note:** The positions of the clips on the rear cover are as follows. There are some small gaps between CLIPS. It's suggested to separate the bezel and rear cover from the gaps.



### 3. Remove the mainframe from the panel.

Remove the aluminum foil; pull out the wire marked in red circles to remove the mainframe.

**Note:** When you assemble the LCD, you must tidy the wire as follow picture.

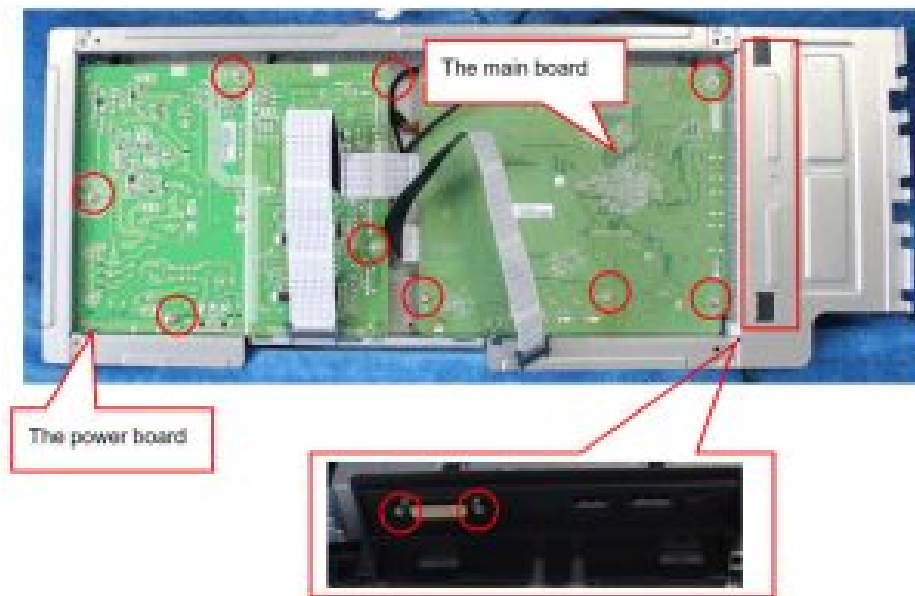


### 4. Remove the boards from the mainframe

Remove the mylar from the mainframe.



And then remove screws in red, pull out the wire to remove the mainboard and power board.



Turn over the power board and mainboard; remove the cables.



#### 5. Remove the speaker

Pull at the foot of the speaker strongly as follow picture.



#### 6. Remove the panel

**Note:** Be course the panel is easy to break, when we remove the panel, we should hold the iron on the panel edge using two hands at the same time, and should avoid touching the panel surface.




#### 7. Remove the keyboard and daughter board from the bezel.



## Disassembly Time

Total time: 30 minutes

## Documents / Resources

	<a href="#">BenQ LCD Monitor PD3200Q Recycle Disassemble [pdf] Instructions</a> BenQ, LCD, Monitor, PD3200Q
--	--