



BenQ LCD Monitor PD2700U Recycle Disassemble Instruction Manual

[Home](#) » [BenQ](#) » BenQ LCD Monitor PD2700U Recycle Disassemble Instruction Manual 



Recycle Disassemble Instruction (Dismantled Information)

Requirements according to ANNEX VII of DIRECTIVE 2012/19/EU on waste electrical and electronic equipment (WEEE)

Materials and components with hazardous content

LCDs may contain hazardous substances like Pb and BFRs which are covered by exemptions under the RoHS directive. However, the majority is present in the printed circuit boards assembly. In order to reduce emissions as much as possible, complete disposal of the old appliance is required. This treatment may only be performed in authorized handling plants.

Product Name: LCD Monitor








Model No.: PD2700U



Contents

- [1 Disassembly Tools](#)
- [2 Disassembly process](#)
- [3 Documents / Resources](#)
- [4 Related Posts](#)

Disassembly Tools

Tool	picture
Philips Screwdriver for M3 Screw	
Nosed Pliers	
Diagonal Cutting Pliers	
Slotted screwdriver	
Six Point Sockets	
Philips Screwdriver for M2.5 Screw	
Knife	

Disassembly process

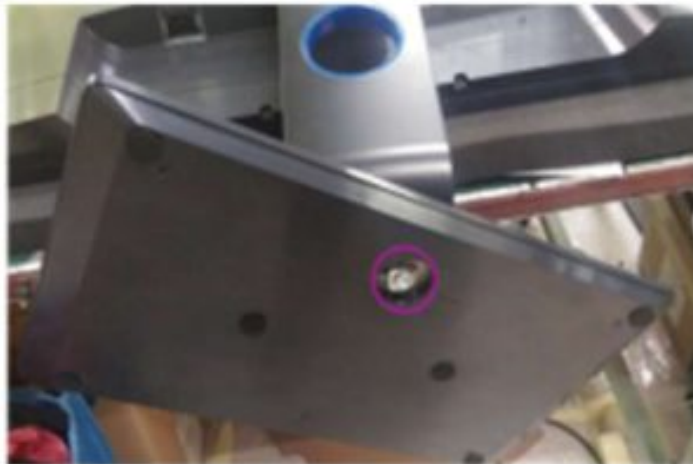
Remove external cable(WEEE ANNEX VII)

1. Remove USB cable
2. Remove HDMI cable
3. Remove DP cable
4. Remove Power Cord



Remove ASSY Stand

1. Remove base by pressing release Screw.



2. Remove ASSY CLMN by hand.

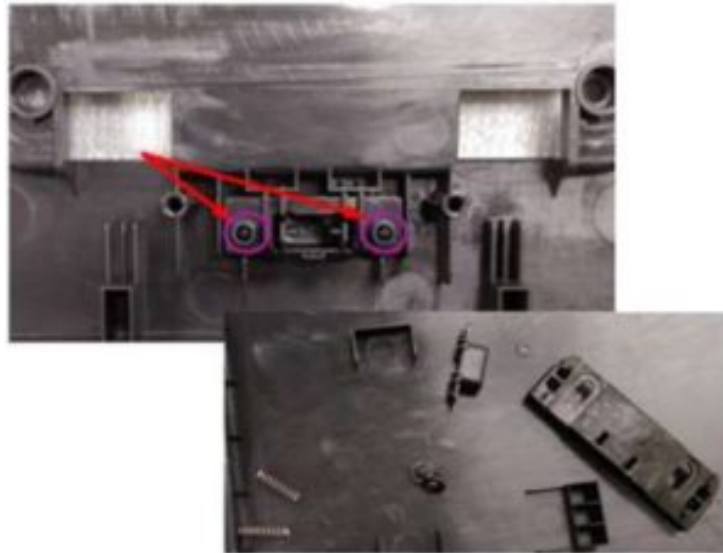


Remove ASSY Rear Cover

1. Remove screw to release Rear Cover



2. Remove Slider module from RC by Screwdriver and hand

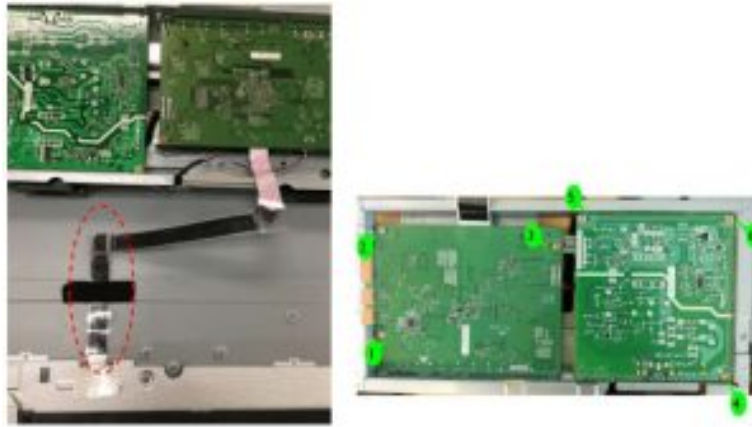


Remove SHD and PCB.

1. Remove lamp wire and ctrl BD FFC.



2. Remove LVDS from PANEL, and remove the screw by screwdriver



3. Remove wire by hand



Remove MF and DECO from PANEL

1. Remove screw by screwdriver



2. Remove DECO by hand



3. Remove CTRL BD FFC and CTRL BD by hand



4. Remove screw by screwdriver



Disassembly Time

Total time: 30 minutes

Documents / Resources



Recycle Disassemble Instructions (Disassembly Information)

Important: Handling of LCD (LCD Panel) and Backlight

Warning: Do not touch the LCD panel or backlight.

When you are working with the LCD panel or backlight, you must wear gloves and avoid touching the LCD panel or backlight. The LCD panel and backlight are sensitive to static electricity and may be damaged if touched. The LCD panel and backlight are also sensitive to heat and may be damaged if exposed to high temperatures. The LCD panel and backlight are also sensitive to moisture and may be damaged if exposed to high humidity.

Product Name: LCD Monitor
Model No.: PD2700U



[BenQ LCD Monitor PD2700U Recycle Disassemble](#) [pdf] Instruction Manual

BenQ, LCD, Monitor, PD2700U, Recycle, Disassemble