




BenQ GW2270 LCD Monitor User Guide

[Home](#) » [BenQ](#) » BenQ GW2270 LCD Monitor User Guide 

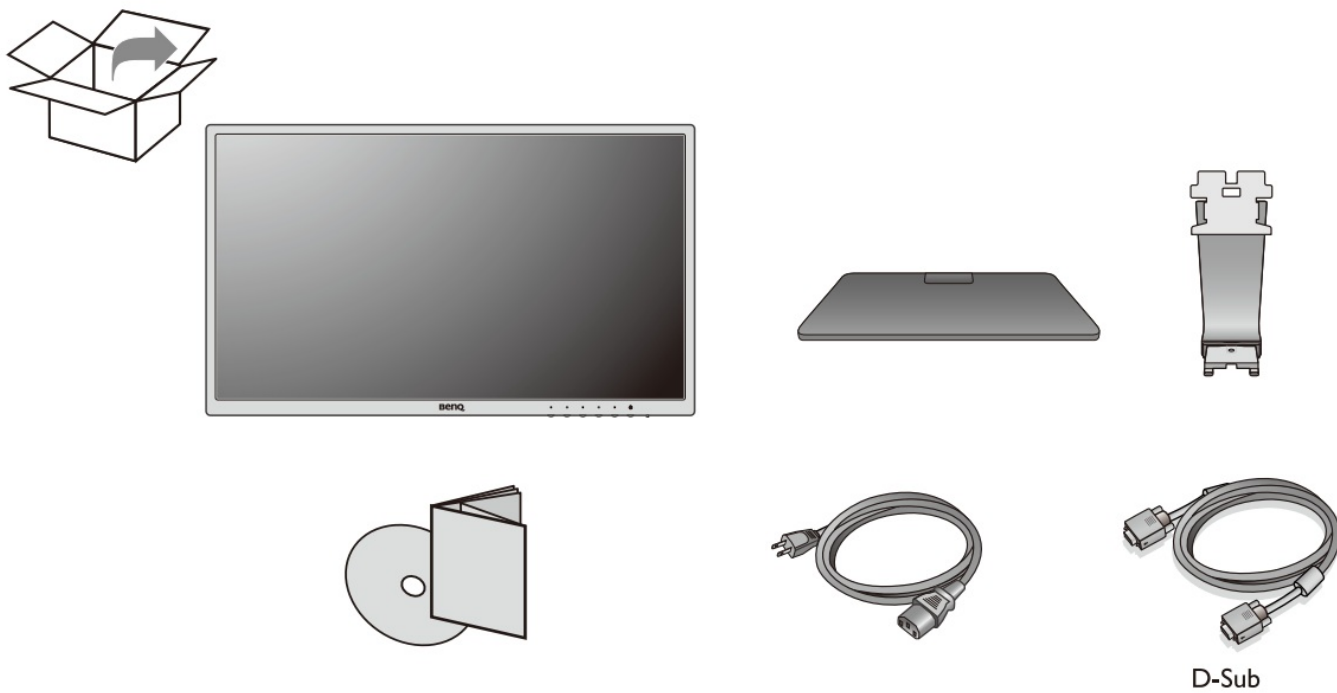
BenQ GW2270 LCD Monitor



Contents

- [1 What is in the Box?](#)
- [2 Safety Information](#)
- [3 Instruction for use](#)
- [4 Other Box Content](#)
- [5 Customer Support](#)
- [6 Documents / Resources](#)
 - [6.1 References](#)
- [7 Related Posts](#)

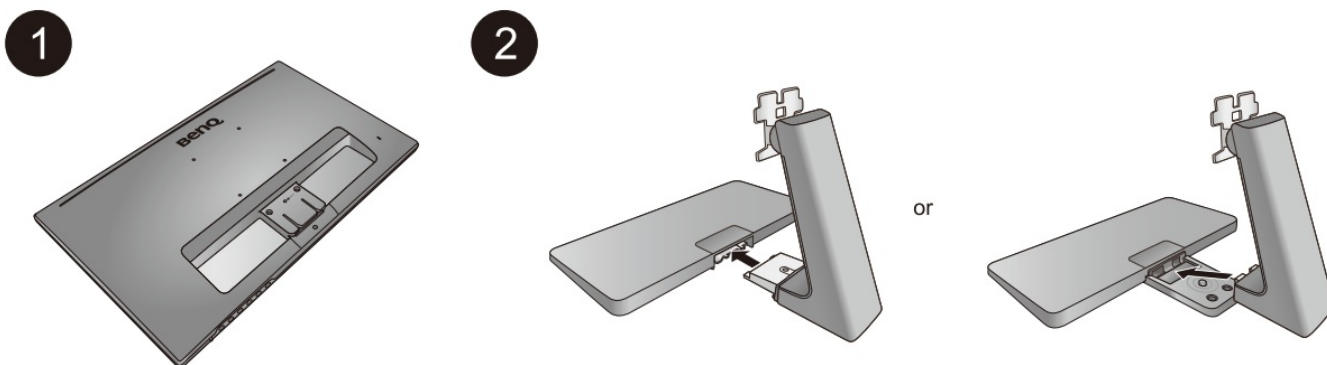
What is in the Box?



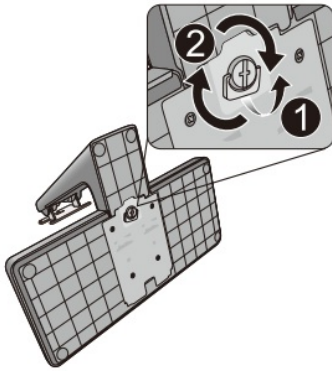
Safety Information



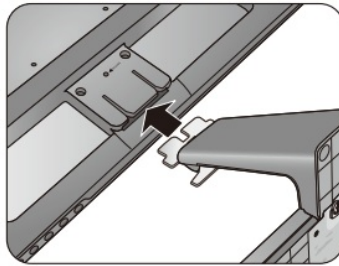
Instruction for use



3

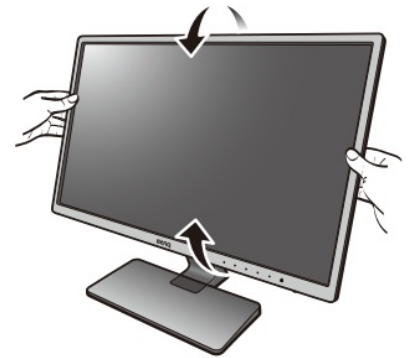


4



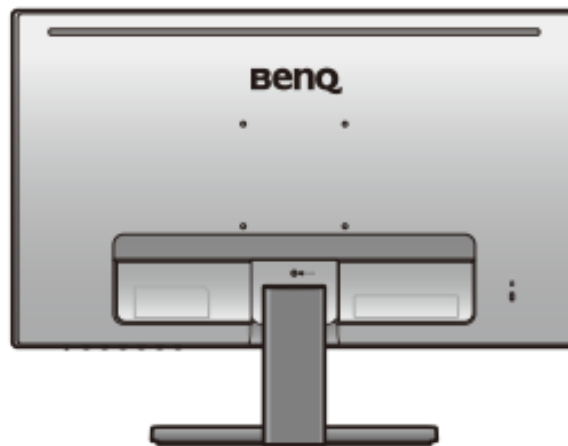
5

19.5" / 21.5" / 23.8": -5° ~ 20°
28": -5° ~ 15°

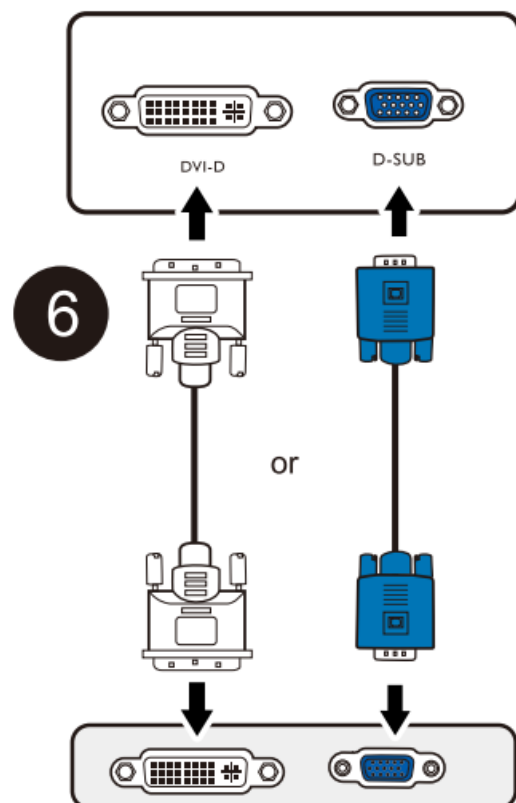


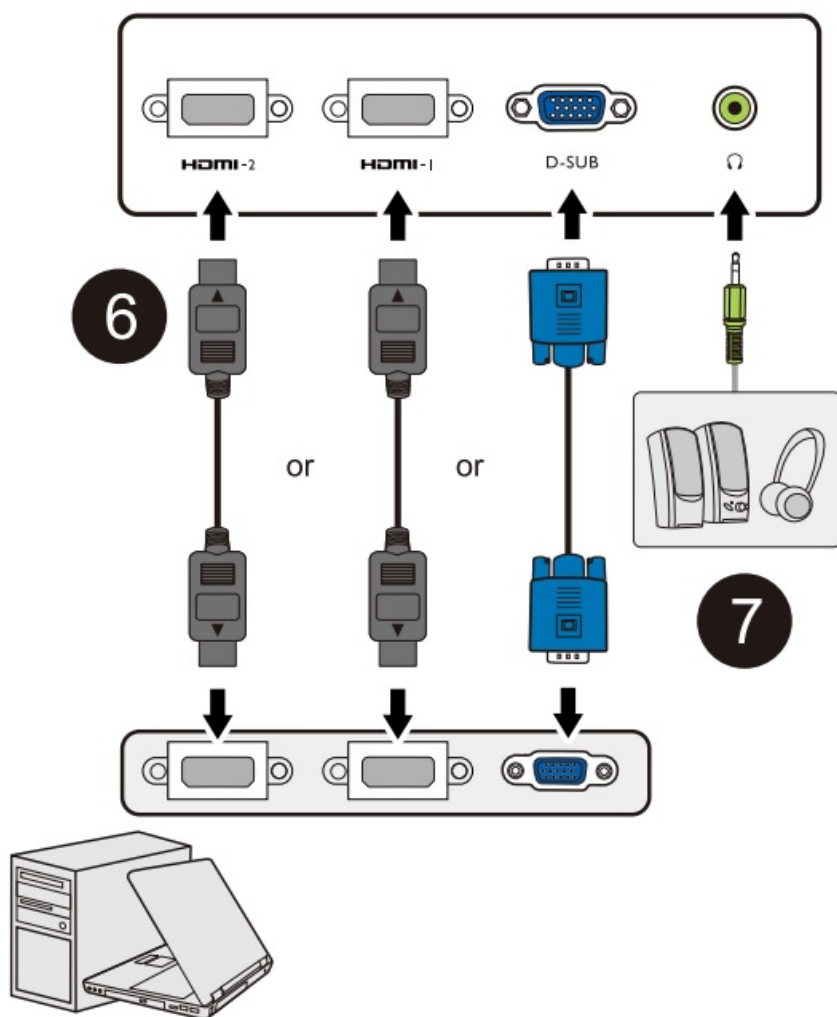
6 Video

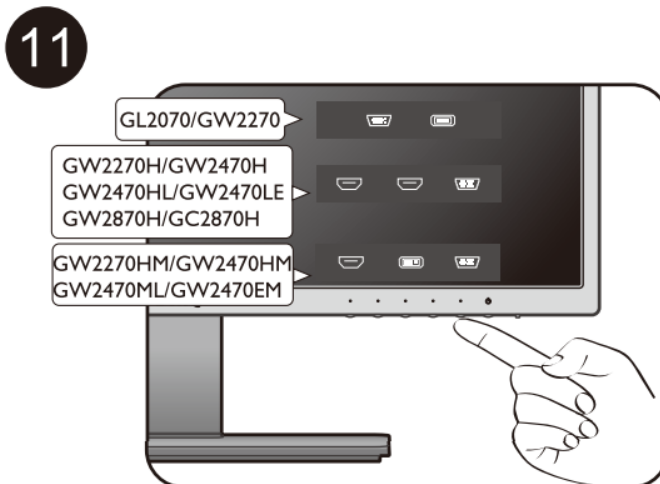
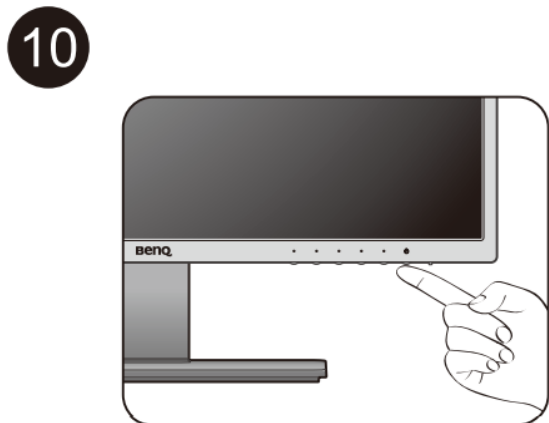
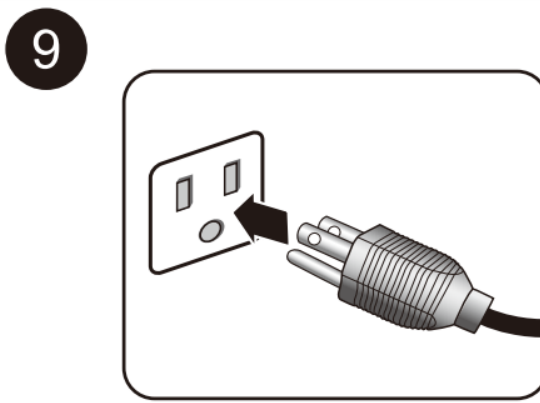
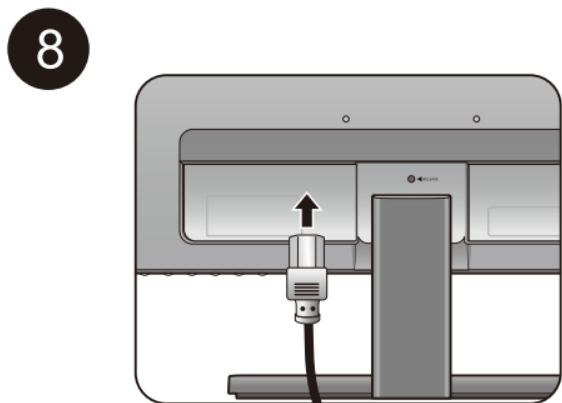
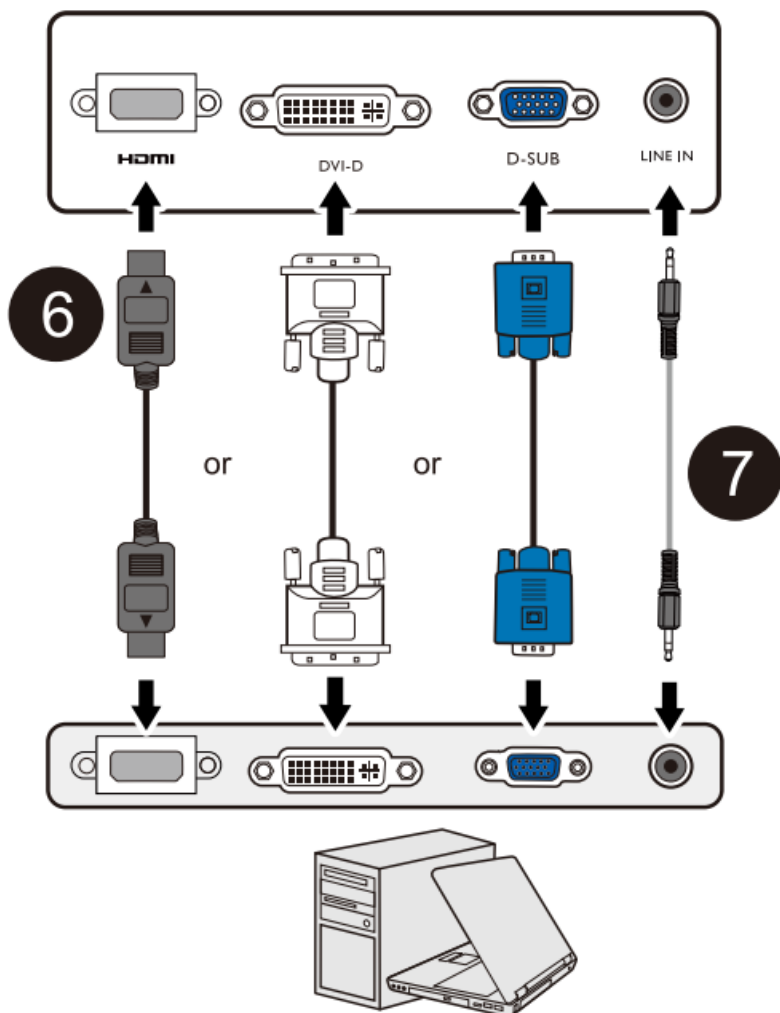
7 Audio



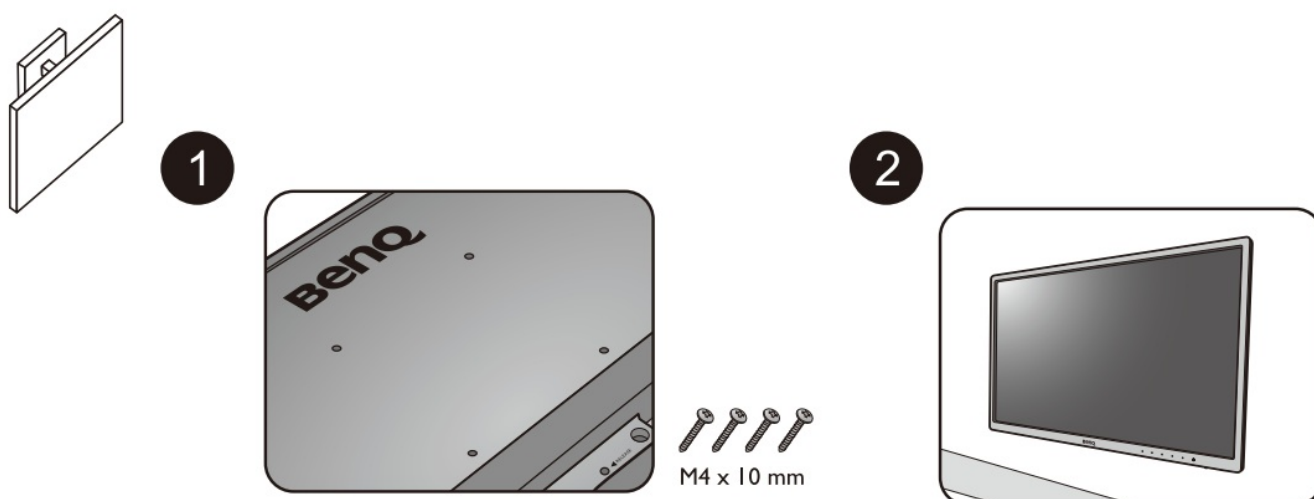
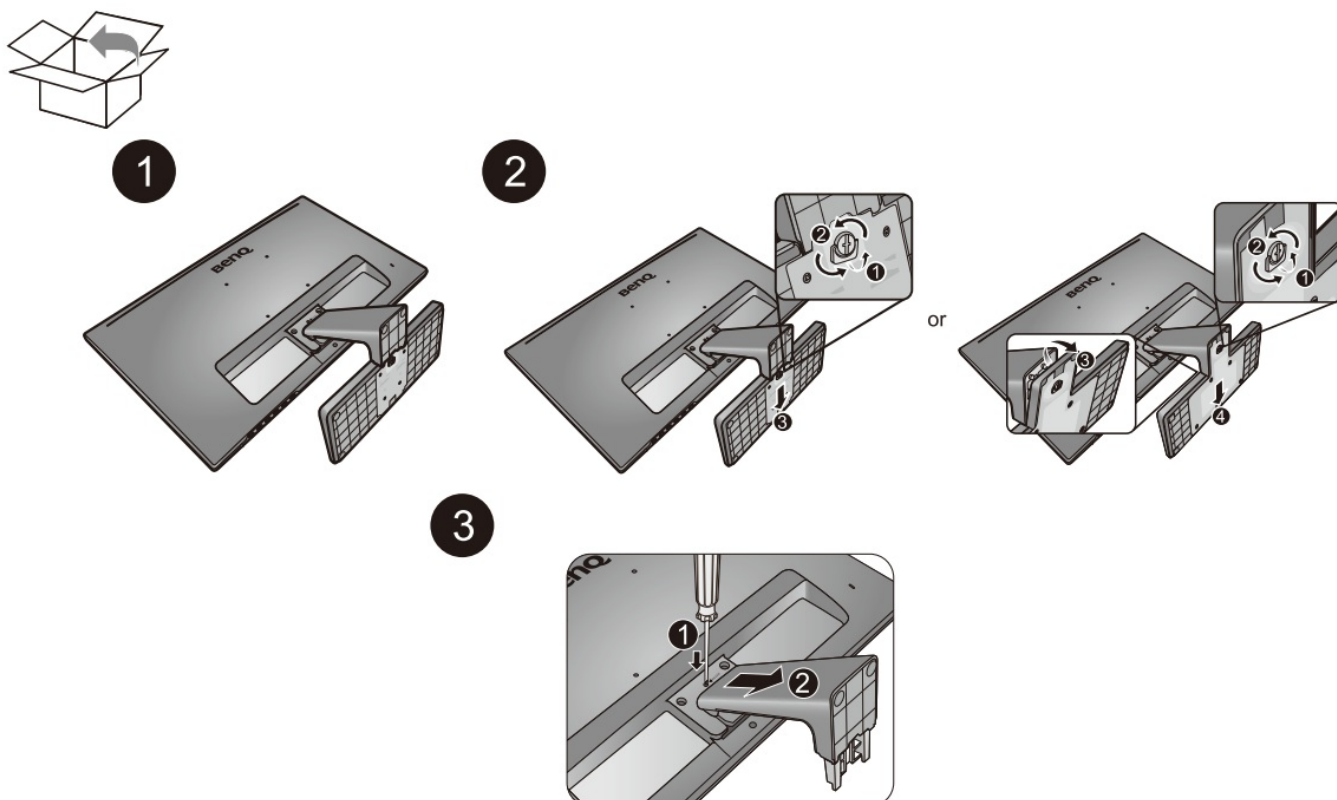
GL2070 / GW2270







Other Box Content



Customer Support

©2018 BenQ Corporation. All rights reserved. Rights of modification reserved.

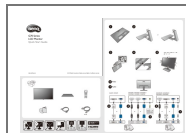




www.BenQ.com



Documents / Resources



[BenQ GW2270 LCD Monitor](#) [pdf] User Guide
GW2270 LCD Monitor, GW2270, LCD Monitor, Monitor

References

- [User Manual](#)

[Manuals+](#), [Privacy Policy](#)

This website is an independent publication and is neither affiliated with nor endorsed by any of the trademark owners. The "Bluetooth®" word mark and logos are registered trademarks owned by Bluetooth SIG, Inc. The "Wi-Fi®" word mark and logos are registered trademarks owned by the Wi-Fi Alliance. Any use of these marks on this website does not imply any affiliation with or endorsement.