

BenQ
BenQ G Series LCD
Monitor



BenQ G Series LCD Monitor User Manual

[Home](#) » [BenQ](#) » BenQ G Series LCD Monitor User Manual 

Contents

- 1 [BenQ G Series LCD Monitor](#)
- 2 [Product Usage Instructions](#)
- 3 [Installation](#)
- 4 [Operation](#)
- 5 [Care and cleaning](#)
- 6 [Getting started](#)
- 7 [Connections](#)
- 8 [How to assemble your monitor hardware](#)
- 9 [How to detach the stand and the base](#)
- 10 [How to adjust your monitor](#)
- 11 [Troubleshooting](#)
- 12 [Q&A index](#)
- 13 [Documents / Resources](#)
 - 13.1 [References](#)
- 14 [Related Posts](#)

BenQ

BenQ G Series LCD Monitor



Specifications

- Model: G Series
- Display Type: LCD
- Eye Care Technology
- Available Models: GW2491, GW2491E, GW2491T, GW2791, GW2791E, GW2791T

Product Usage Instructions

Setup

To set up the monitor and turn it on, follow these steps

1. Connect your computer to the Internet.
2. Visit the local website from Support.BenQ.com The website layout and content may vary by region/country.

Functions to Reduce Eye Strain

To reduce the blue light emitted from the display and work with Low Blue Light Plus:

- Access the OSD menu.
- Navigate to the settings related to reducing blue light.
- Adjust the blue light reduction settings according to your preference.

Maintenance and Cleaning

To clean the monitor and keep it in good condition

- Use a soft, dry cloth to clean the monitor screen.
- Do not use harsh chemicals or abrasive cleaners.

- For long-term storage, detach the stand and base of the monitor.

FAQ

• Q: How do I wall mount the monitor?

- **A:** To wall mount the monitor, you need to purchase a separate wall mounting kit. Follow the instructions provided with the kit for proper installation.

• Q: Where can I find more product support?

- **A:** Visit [Support.BenQ.com](https://support.benq.com) for product support or contact the nearest BenQ service center for assistance.

Safety precautions

Power safety

Please follow these safety instructions for best performance, and long life for your monitor.



- The AC plug isolates this equipment from the AC supply.
- The power supply cord serves as a power disconnect device for pluggable equipment. The socket outlet should be installed near the equipment and be easily accessible.
- This product should be operated from the type of power indicated on the marked label. If you are not sure of the type of power available, consult your dealer or local power company.
- The Class I pluggable equipment Type A must be connected to protective earth.
- An approved power cord greater or equal to H03VV-F or H05VV-F, 2G or 3G, 0.75mm² must be used.
- Use only the power cord provided by BenQ. Never use a power cord that appears to be damaged or frayed.
- To avoid possible damage to the monitor, do not use it in a region where power supply is unstable.
- Ensure that the power cord is connected to a grounded power outlet before turning on the monitor.
- To avoid possible danger, observe the total electric load when using the monitor with a (multi-outlet) extension cord.
- Always turn off the monitor before unplugging the power cord.

For Germany only

- (If the weight of the product is less than or equal to 3 kg) An approved power cord greater or equal to H03VV-F, 3G, 0.75mm² must be used.
- (If the weight of the product is more than 3 kg) An approved power cord greater or equal to H05VV-F or H05RR-F, 3G, 0.75mm² must be used.
- (If a remote control is provided) RISK OF EXPLOSION IF BATTERY IS REPLACED BY AN INCORRECT TYPE. DISPOSE OF USED BATTERIES ACCORDING TO THE INSTRUCTIONS.

For models with adapter

- Use only the power adapter supplied with your LCD Monitor. Use of another type of power adapter will result in malfunction and/or danger.
- Allow adequate ventilation around the adapter when using it to operate the device or charge the battery. Do not cover the power adapter with paper or other objects that will reduce cooling. Do not use the power adapter while it is inside a carrying case.
- Connect the power adapter to a proper power source.
- Do not attempt to service the power adapter. There are no service parts inside. Replace the unit if it is damaged or exposed to excess moisture.

Installation

- Do not use your monitor under any of the following environmental conditions:
 - Extremely high or low temperature, or in direct sunlight
 - Dusty places
 - Highly humid, exposed to rain, or close to water
 - Exposed to vibrations or impacts in places such as cars, buses, trains, and other rail vehicles
 - Near heating appliances such as radiators, heaters, fuel stoves, and other heat-generating items (including audio amplifiers)
 - An enclosed place (such as a closet or bookcase) without appropriate ventilation
 - An uneven or sloping surface
 - Exposed to chemical substances or smoke
- Carry the monitor carefully.
- Do not place heavy loads on the monitor to avoid possible personal injury or damage to the monitor.
- Ensure that children do not hang or climb onto the monitor.
- Keep all packing bags out of reach of children.

Operation

- To protect your eyesight, please refer to the user manual to set the optimal screen resolution and the viewing distance.
- To reduce eye fatigue, take a break on a regular basis while using the monitor.
- Avoid taking either one of the following actions for a long time. Otherwise, burn marks may occur.
 - Play images that cannot occupy the screen entirely.
 - Place a still image on the screen.
- To avoid possible damage to the monitor, do not touch the monitor panel by finger tip, pen, or any other sharp objects.
- Excessively frequent plug and unplug of video connectors may cause damage to the monitor.
- This monitor is designed mainly for personal use. If you want to use the monitor in a public place or a harsh environment, contact your nearest BenQ service center for assistance.
- To avoid possible electric shock, do not disassemble or repair the monitor.
- If a bad smell or an abnormal sound appears to come from the monitor, contact your nearest BenQ service center for assistance immediately.

Caution

- The distance between you and the monitor should be 2.5 to 3 times the diagonal width of the screen.
- Looking at the screen for an extended period of time causes eye fatigue and may deteriorate your eyesight.
Rest your eyes for 5 ~ 10 minutes for every 1 hour of product use.
- Reduce your eye strain by focusing on objects far away.
- Frequent blinking and eye exercise help keep your eyes from drying out.

Safety notice for remote control (applicable if a remote control is provided)

- Do not put the remote control in the direct heat, humidity, and avoid fire.
- Do not drop the remote control.
- Do not expose the remote control to water or moisture. Failure to do so could result in malfunction.
- Confirm there is no object between the remote control and the remote sensor of the product.
- When the remote control will not be used for an extended period, remove the batteries.

Battery safety notice (applicable if a remote control is provided)

The use of the wrong type of batteries may cause chemical leaks or explosion. Please note the following

- Always ensure that the batteries are inserted with the positive and negative terminals in the correct direction as shown in the battery compartment.
- Different types of batteries have different characteristics. Do not mix different types.
- Do not mix old and new batteries. Mixing old and new batteries will shorten battery life or cause chemical leaks from the old batteries.
- When batteries fail to function, replace them immediately.
- Chemicals which leak from batteries may cause skin irritation. If any chemical matter seeps out of the batteries, wipe it up immediately using a dry cloth, and replace the batteries as soon as possible.
- Due to varying storage conditions, the battery life for the batteries included with your product may be shortened. Replace them within 3 months or as soon as you can after initial use.
- There may be local restrictions on the disposal or recycling of batteries. Consult your local regulations or waste disposal provider.

If the supplied remote control contains a coin / button cell battery, pay attention to the following notice as well

- Do not ingest battery. Chemical Burn Hazard.
- The remote control supplied with this product contains a coin / button cell battery. If the coin / button cell battery is swallowed, it can cause severe internal burns in just 2 hours and can lead to death.
- Keep new and used batteries away from children. If the battery compartment does not close securely, stop using the product and keep it away from children.
- If you think batteries might have been swallowed or placed inside any part of the body, seek immediate medical attention.

Care and cleaning

- Do not place the monitor face down on the floor or a desk surface directly. Otherwise, scratches on the panel surface may occur.
- The equipment is to be secured to the building structure before operation.
- (For models that support wall or ceiling mounting)
- Install your monitor and monitor mounting kit on a wall with flat surface.
- Ensure that the wall material and the standard wall mount bracket (purchased separately) are stable enough to support the weight of the monitor.
- Turn off the monitor and the power before disconnecting the cables from the LCD monitor.
- Always unplug the product from the power outlet before cleaning. Clean the LCD monitor surface with a lint-free, non-abrasive cloth. Avoid using any liquid, aerosol or glass cleaners.
- Slots and openings on the back or top of the cabinet are for ventilation. They must not be blocked or covered. Your monitor should never be placed near or over a radiator or heat sources, or in a built-in installation unless proper ventilation is provided.
- Do not place heavy loads on the monitor to avoid possible personal injury or damage to the monitor.
- Consider keeping the box and packaging in storage for use in the future when you may need to transport the monitor.
- Refer to the product label for information on power rating, manufacture date, and identification markings.

Servicing

- Do not attempt to service this product yourself, as opening or removing covers may expose you to dangerous voltages or other risks. If any of the above mentioned misuse or other accident such as dropping or mishandling occurs, contact qualified service personnel for servicing.
- For replacement of power cord, connection cables, remote control or power adapter, please contact BenQ customer service.
- Contact your place of purchase or visit the local website from [Support.BenQ.com](https://support.benq.com) for more support.



[Support.BenQ.com](https://support.benq.com)




General warranty information

Note that the monitor warranty may be void if any of the following conditions occurs

- Documents required for warranty services have been altered by unauthorized use or is illegible.
- The model number or production number on the product has been altered, deleted, removed or made illegible.
- Repairs, modifications, or alterations have been made by unauthorized service organizations or persons.
- Damage caused by improper storage of the monitor (including but not limited to force majeure, direct exposure to sunlight, water, or fire).
- Reception problems occurred due to external signals (such as antenna, Cable TV) outside the monitor.

- Defects caused by abuse or misuse of the monitor.
- Before using the monitor, it is the sole responsibility of the user to check whether the monitor is compatible with local technical standards if the user brings the monitor out of its intended sales area. Failure to do so may cause product breakdown and the user will have to pay the repairing costs.
- It is the sole responsibility of the user if problems (such as data loss and system failure) occurred due to non-factory provided software, parts, and/or non-original accessories.
- Please use the original accessories (e.g. power cable) only with the device to avoid possible dangers such as electric shock and fire.


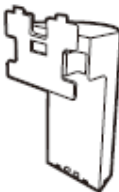




Typographic

Icon / Symbol	Item	Meaning
	Warning	Information mainly to prevent the damage to components, data, or personal injury caused by misuse and improper operation or behavior.
	Tip	Useful information for completing a task.
	Note	Supplementary information.

In this document, the steps needed to reach a menu may be shown in condensed form, for example: Menu > System > Information.

Getting started

When unpacking please check you have the following items. If any are missing or damaged, please contact the place of purchase for a replacement.

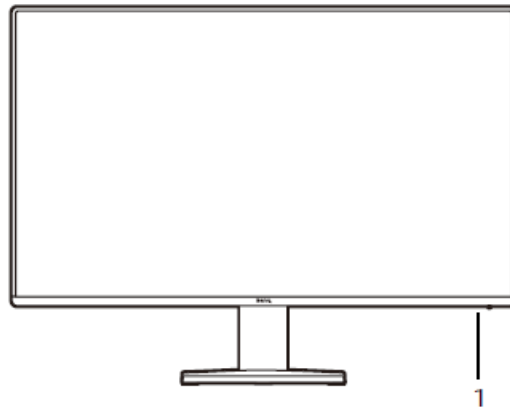
LCD Monitor	
Monitor Stand	
Monitor Base	
User documents <ul style="list-style-type: none"> • Quick start guide • Safety Instructions • Regulatory Statements 	
Power Cord (Supplied item may differ by model or region.)	
Video Cable: HDMI	

- Available accessories and the pictures shown here may differ from the actual contents and the product supplied for your region. And the package contents may subject to change without prior notice. For cables that are not supplied with your product, you can purchase them separately.
- Consider keeping the box and packaging in storage for use in the future when you may need to transport the monitor. The fitted foam packing is ideal for protecting the monitor during transport.
- Accessories and cables may be included or sold separately depending on the product supplied for your region.

Always keep the product and accessories out of reach of small children.

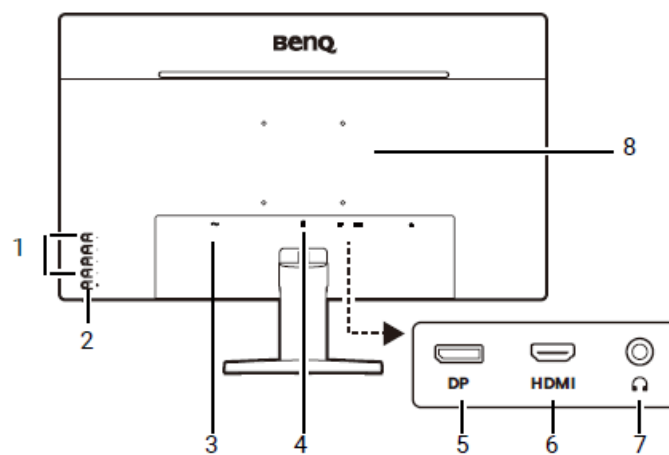
Getting to know your monitor

Front view



1. Power LED indicator

Back view

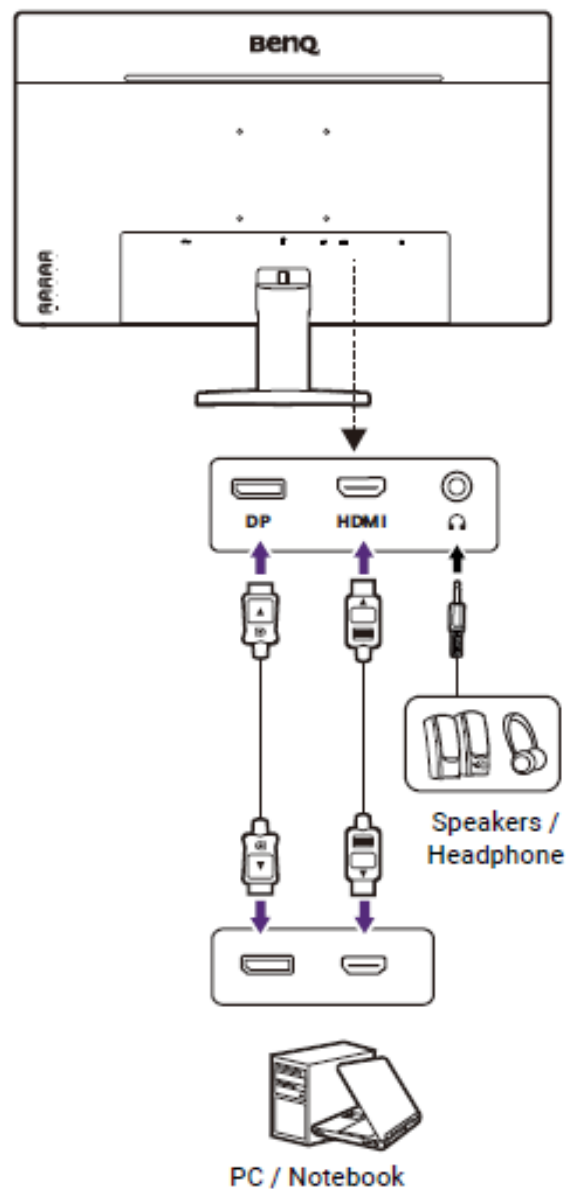


1. Control buttons
2. Power button
3. AC power input jack
4. Kensington lock slot
5. DisplayPort socket
6. HDMI socket
7. Headphone jack
8. VESA mount

- Above diagram may vary depending on the model.
- Picture may differ from product supplied for your region.
- (Applicable for products with white case) The case of the product may turn yellow in about 3 years due to the photo-oxidation reactions induced by light. This is a normal phenomenon and should not be considered as manufacturing defect.

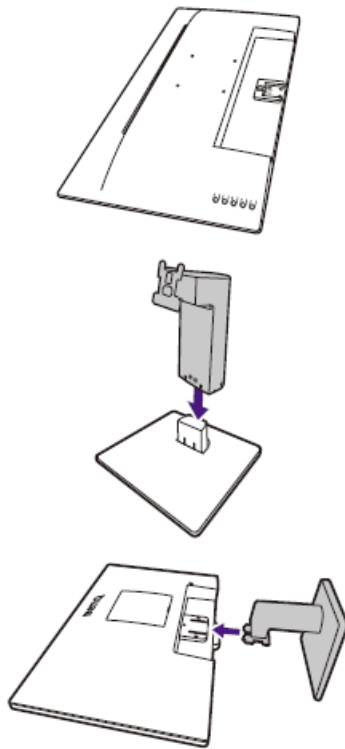
Connections

The following connection illustrations are for your reference only. For cables that are not supplied with your product, you can purchase them separately.
For detailed connection methods, see page 15.

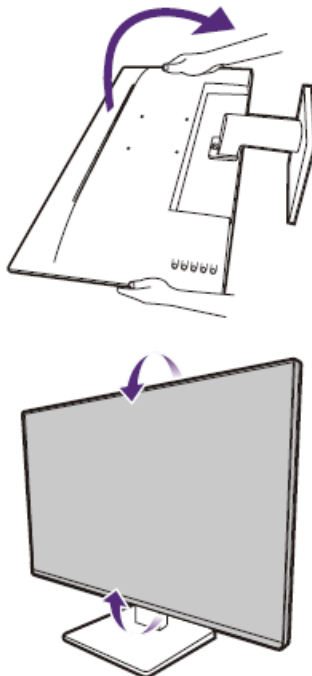


How to assemble your monitor hardware

- Please be careful to prevent damage to the monitor. Placing the screen surface on an object like a stapler or a mouse will crack the glass or damage the LCD substrate voiding your warranty. Sliding or scraping the monitor around on your desk will scratch or damage the monitor surround and controls.
- Protect the monitor and screen by clearing a flat open area on your desk and placing a soft item like the monitor packaging bag on the desk for padding.
- Gently lay the screen face down on a flat clean padded surface.
- Attach the monitor stand to the monitor base as illustrated until it locks in place.
- Pay attention to the sharp parts during assembly.
- Orient and align the stand arm with the monitor, then push them together until they click and lock into place.



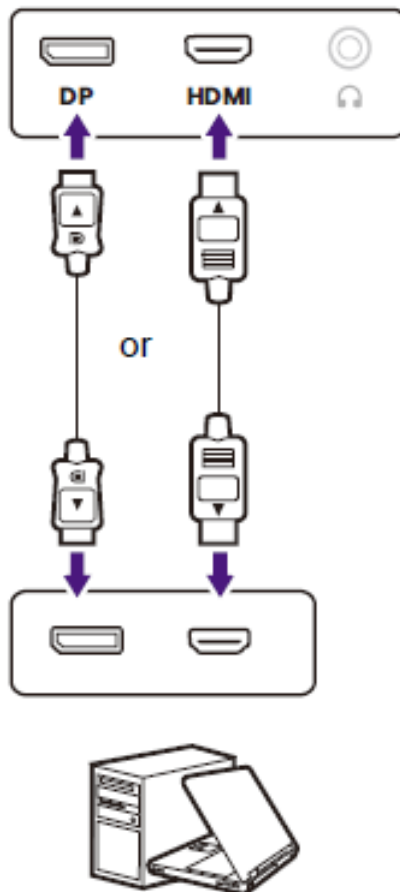
- Carefully lift the monitor, turn it over and place it upright on its stand on a flat even surface.
- You should position the monitor and angle the screen to minimize unwanted reflections from other light sources.
- If your monitor is an edge-to-edge monitor, it should be handled with care. Adjust the screen angle by placing your hands on the top and on the base of the monitor as illustrated. Excessive force on the display is prohibited.



Connect the PC video cable

The video cables included in your package and the socket illustrations on the right may vary depending on the product supplied for your region.

•

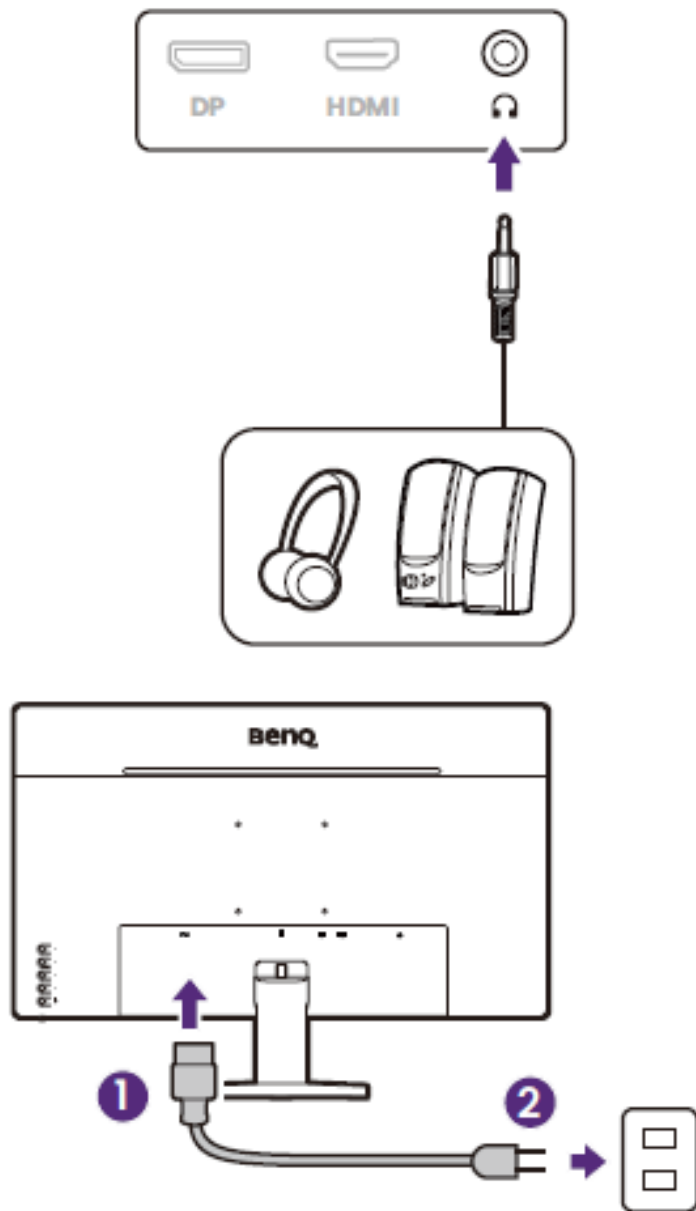


Connect the plug of the HDMI cable to the HDMI port on the monitor. Connect the other end of the cable to the HDMI port of a digital output device.


- Connect the plug of the DP cable to the monitor video socket. Connect the other end of the cable to the computer video socket.

Connect the headphone

You may connect headphones to the headphone jack found below the rear of the monitor.



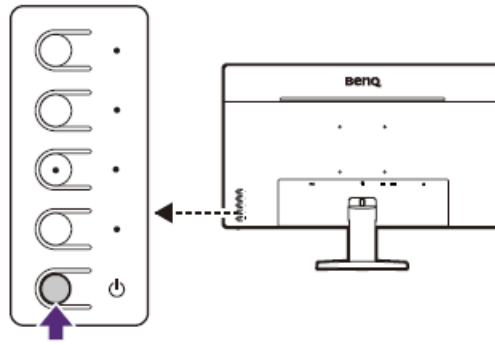
Connect the power cable.

- Plug one end of the power cord into the socket labelled  on the rear of the monitor.
- Plug the other end of the power cord into a power outlet and turn it on.

Picture may differ from product supplied for your region.

Turn on the power.

- Turn on the monitor by pressing the power button on the monitor.
- Turn on the computer too.

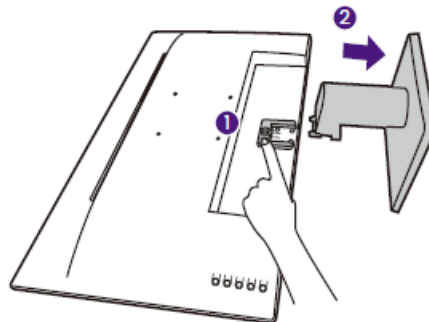
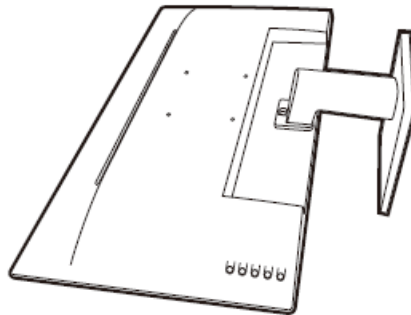


To extend the service life of the product, we recommend that you use your computer's power management function.

How to detach the stand and the base

Prepare the monitor and area.

- Turn off the monitor and the power before unplugging the power cable. Turn off the computer before unplugging the monitor signal cable.
- Protect the monitor and screen by clearing a flat open area on your desk and placing a soft item like a towel on the desk for padding, before laying the screen face down on a flat clean padded surface.
- Please be careful to prevent damage to the monitor. Placing the screen surface on an object like a stapler or a mouse will crack the glass or damage the LCD substrate voiding your warranty. Sliding or scraping the monitor around on your desk will scratch or damage the monitor surround and controls.

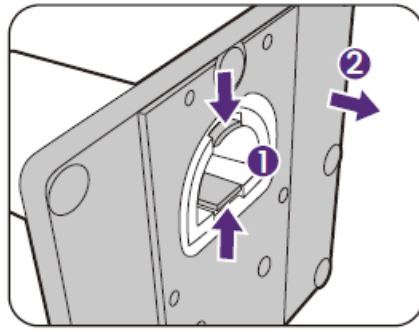


Remove the monitor stand.

While pressing and holding the quick release button (1), detach the stand from the monitor 2().

Remove the monitor base.

Hold the monitor stand arm with one hand, and push the locking clips to detach the monitor base from the stand arm.



Using the monitor wall mounting kit (purchased separately)

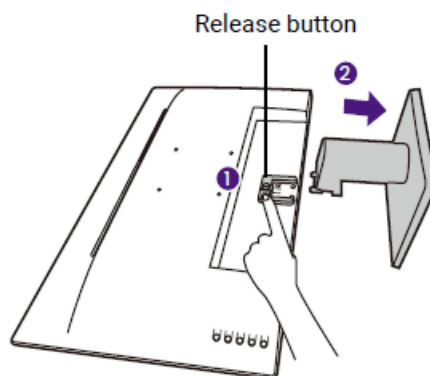
The back of your LCD monitor has a VESA standard mount with 100mm pattern, allowing the installation of a wall mount bracket. Before starting to install a monitor wall mounting kit, please read the precautions carefully.

Precautions

- Install your monitor and monitor mounting kit on a wall with flat surface.
- Ensure that the wall material and the standard wall mount bracket (purchased separately) are stable enough to support the weight of the monitor. Refer to the product specifications on the website for weight information.
- Turn off the monitor and the power before disconnecting the cables from the LCD monitor.

Remove the monitor stand.

- Lay the screen face down on a clean and well-padded surface. Detach the monitor stand as instructed in How to detach the stand and the base on page 17.
- Then pull the monitor stand backward away from the monitor.



In case you intend to use your monitor on the stand in the future, please keep the monitor base and monitor stand somewhere safe for future use.

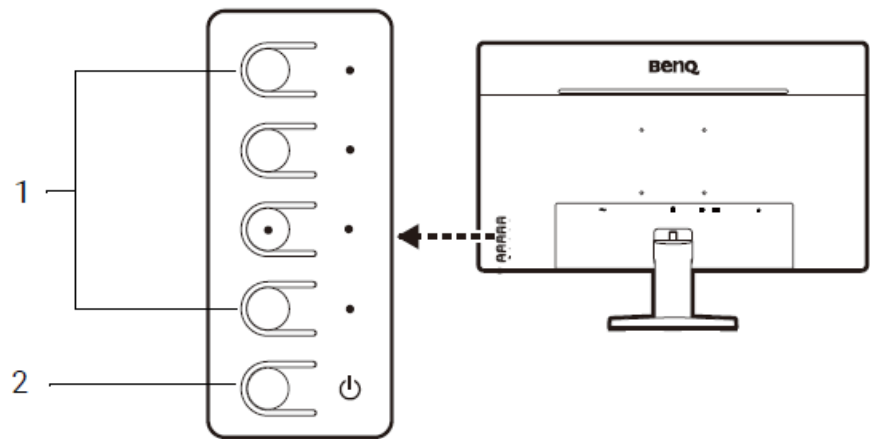
Follow the instruction manuals of the wall mount bracket you purchased to complete the installation.

Use four M4 x 10 mm screws to fix a VESA standard wall mount bracket to the monitor. Make sure that all screws are tightened and secured properly. Consult a professional technician or BenQ service for wall mount installation and safety precautions.

How to adjust your monitor

The illustrations and the images shown in this document are for your reference. The actual content may vary by the product supplied for you.

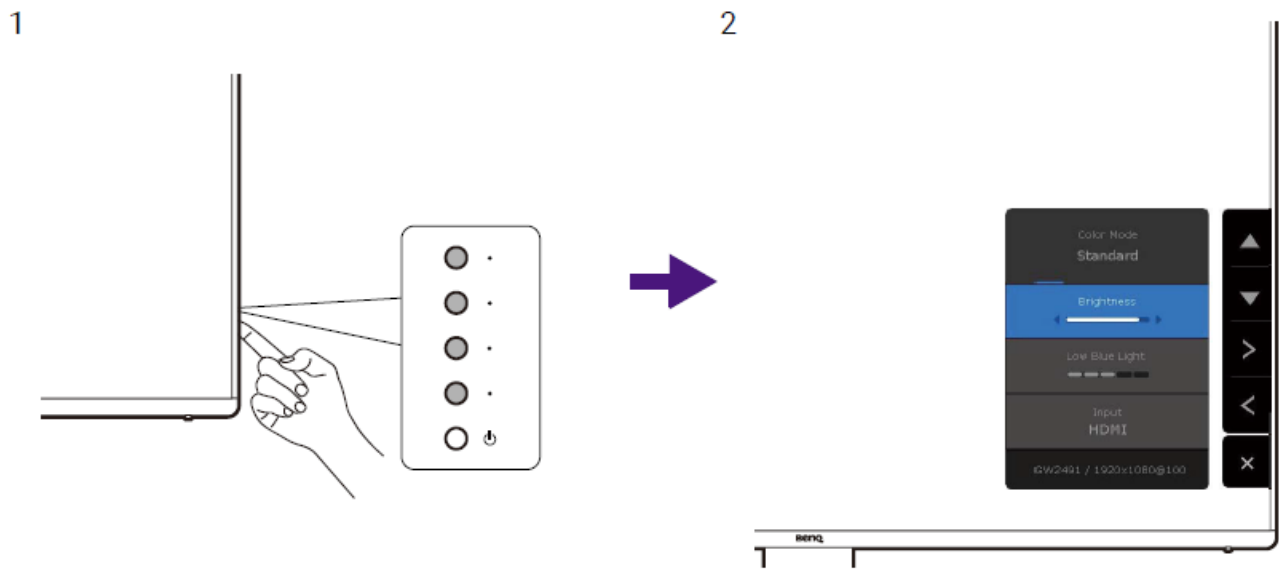
The control panel



No.	Name	Description
1.	Control buttons	Accesses the functions or menu items displayed on the screen.
2.	Power button	Turns the power on or off.

Basic menu operations

Use the On Screen Display (OSD) menu to adjust all the settings on your monitor.

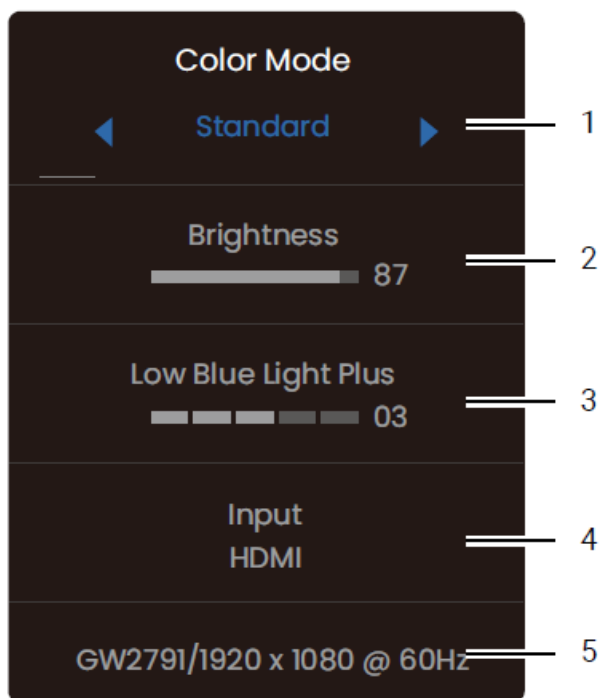


1. Press any of the control buttons.
2. The menu is displayed.
3. On the menu, follow the on-screen icons to make adjustments or selection.

Press the power button for 10 seconds to reset all menu settings.

Navigating the main menu

- You can use the OSD menu to adjust settings on your monitor. See Basic menu operations on page 19 for details.
- Available menu options may vary depending on the input sources, functions and settings.
- Menu options that are not available will become grayed out.



No.	Item	Function	Range
1	Color Mode	Press </> to cycle through the available color mode. See Choosing an appropriate color mode on page 21 for more information.	<ul style="list-style-type: none"> • Standard • Cinema • Game • Coding • ePaper
2	Brightness	Adjusts the balance between light and dark shades.	0 to 100
3	Low Blue Light Plus	Decreases the blue light emitted from the display to reduce the risk of blue light exposure to your eyes.	0 to 5
4	Input	Detects the input sources connected and to choose from.	<ul style="list-style-type: none"> • DP • HDMI
5	Information	Displays the current monitor property settings.	<ul style="list-style-type: none"> • Model name • Current resolution

Choosing an appropriate color mode

Your monitor provides various color modes that are suitable for different types of images.

- 1. Press any of the control buttons to bring up the menu.
- 2. Under Color Mode, select a desired picture mode.

Item	Function	Gamma	AMA Value
Standard	For basic PC application.	2.2	Off (14ms)
Cinema	For viewing videos.	2.4	High (8ms)
Game	For playing video games.	2.2	Premium (4ms)
Coding	For coding or programming with high contrast and saturation.	2.6	Off (14ms)
ePaper	For reading e-books or documents in black and white with suitable on-screen brightness and clear texts.	2.2	Off (14ms)

Working with Low Blue Light Plus

The Low Blue Light Plus technology helps decrease the blue light emitted from the display to reduce the risk of blue light exposure to your eyes.

You can reduce the blue light as desired regardless of color mode. To adjust Low Blue Light Plus setting,

- 1. Press any of the control buttons to bring up the menu.
- 2. Under Low Blue Light Plus, press < / > to adjust the level.

Adjustable OSD settings

While some settings (e.g., OSD language) are changed and take effect immediately regardless of other monitor settings or input, most OSD settings can be adjusted and saved to go with color modes. As a color mode is selected, the desired settings are applied.

Item	Description
Brightness	Saved and applied by color mode switch.
Low Blue Light Plus	

Troubleshooting

Frequently asked questions (FAQ) Imaging

The image is blurred.

Does the blurring only occur at resolutions lower than the native (maximum) resolution?

Pixel errors can be seen.

One of several pixels is permanently black, one or more pixels are permanently white, one or more pixels are permanently red, green, blue or another color. • Clean the LCD screen. • Cycle power on-off. • These are pixels that are permanently on or off and is a natural defect that occurs in LCD technology.

The image has a faulty coloration.

It has a yellow, blue or pink appearance. Go to Color and Reset Color, and then choose YES to reset the color settings to the factory defaults. If the image is still not correct and the OSD also has faulty coloration, this means one of the three primary colors is missing in the signal input. Now check the signal cable connectors. If any pin is bent or broken off, please contact your dealer to get necessary support.

The image is distorted, flashes or flickers.

The image is displaced in one direction.

Faint shadow from the static image displayed is visible on the screen.

Power LED indicator The LED indicator is white or orange

OSD controls The OSD controls are inaccessible

To unlock the OSD controls when it is preset to be locked, press and hold any key for 5 seconds.

OSD messages A message Out of Range on the screen during computer boot up process.

If there is a message Out of Range on the screen during computer boot up process, this means computer compatibility caused by operating system or graphic card. The system will adjust the refresh rate automatically. Just wait until the operating system is launched.

Need more help?

If your problems remain after checking this manual, please contact your place of purchase or visit the local website from Support.BenQ.com for more support and local customer service.

Copyright

Copyright © 2024 by BenQ Corporation. All rights reserved. No part of this publication may be reproduced, transmitted, transcribed, stored in a retrieval system or translated into any language or computer language, in any form or by any means, electronic, mechanical, magnetic, optical, chemical, manual or otherwise, without the prior written permission of BenQ Corporation.

Disclaimer

- BenQ Corporation makes no representations or warranties, either expressed or implied, with respect to the contents hereof and specifically disclaims any warranties, merchantability or fitness for any particular purpose. Further, BenQ Corporation reserves the right to revise this publication and to make changes from time to time in the contents hereof without obligation of BenQ Corporation to notify any person of such revision or changes.
- BenQ flicker-free technology maintains a stable backlight with a DC dimmer that eliminates the primary cause of monitor flicker, making it easier on the eyes. The performance of flicker-free may be affected by external factors such as poor cable quality, unstable power supply, signal interference, or poor grounding, and not limited to the above mentioned external factors. (Applicable for flicker-free models only.)

BenQ ecoFACTS

BenQ has been dedicated to the design and development of greener product as part of its aspiration to realize the ideal of the “Bringing Enjoyment ‘N Quality to Life” corporate vision with the ultimate goal to achieve a low-carbon society. Besides meeting international regulatory requirement and standards pertaining to environmental management, BenQ has spared no efforts in pushing our initiatives further to incorporate life cycle design in the aspects of material selection, manufacturing, packaging, transportation, using and disposal of the products. BenQ ecoFACTS label lists key eco-friendly design highlights of each product, hoping to ensure that consumers make informed green choices at purchase. Check out BenQ’s CSR Website at <http://csr.BenQ.com/> for more details on BenQ’s environmental commitments and achievements.

Product carbon footprint (PCF)

- The carbon footprint of a product is the estimated carbon emission throughout its entire life cycle. The information may be available on the package or online.
- The carbon footprint stated for this product is the current estimate and the actual result may be subject to change due to unforeseen conditions. This means the actual product carbon footprint may be different from the declared statement.
- You may not find your product’s carbon footprint as it was not available at the time the product was shipped. The information should be online once it’s available.

Product support

This document aims to provide the most updated and accurate information to customers, and thus all contents may be modified from time to time without prior notice. Please visit the website for the latest version of this document and other product information. Available files vary by model.

1. Make sure your computer is connected to the Internet.
2. Visit the local website from [Support.BenQ.com](https://support.benq.com) . The website layout and content may vary by region/country.
 - User manual and related document
 - Drivers and applications
 - (EU only) Dismantled information: Available on the user manual download page. This document is provided based on Regulation (EU) 2019/2021 to repair or recycle your product. Always contact the local customer service for servicing within the warranty period. If you wish to repair an out-of-warranty product, you are recommended to go to a qualified service personnel and obtain repair parts from BenQ to ensure compatibility. Do not disassemble the product unless you are aware of the consequences. If you cannot find the dismantled information on your product, contact the local customer service for assistance.

Q&A index

Start with the topics that you are interested in.

Setup

- **Functions to reduce eye strain**
 - Menus and accessories
 - Maintenance and product support
- **How to set up the monitor and turn it on?**
 - Safety precautions
 - How to assemble your monitor hardware
- **How to wall mount the monitor?**
 - Using the monitor wall mounting kit (purchased separately)

Functions to reduce eye strain

How to reduce the blue light emitted from the display?

Working with Low Blue Light Plus

Menus and accessories

How to use the OSD menu?

Basic menu operations

Navigating the main menu

Maintenance and product support

- **How to clean the monitor?**
 - Care and cleaning
- **How to keep the monitor not in use for a long time?**

How to detach the stand and the base 17

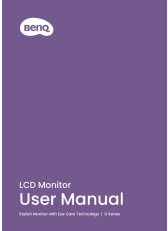
Care and cleaning

- **I need more support.**


Product support

Servicing

Documents / Resources

	<p>BenQ G Series LCD Monitor [pdf] User Manual G Series, G Series LCD Monitor, G Series, LCD Monitor, Monitor</p>
---	---

References

-  [Support | BenQ US](#)
- [User Manual](#)

[Manuals+](#), [Privacy Policy](#)

This website is an independent publication and is neither affiliated with nor endorsed by any of the trademark owners. The "Bluetooth®" word mark and logos are registered trademarks owned by Bluetooth SIG, Inc. The "Wi-Fi®" word mark and logos are registered trademarks owned by the Wi-Fi Alliance. Any use of these marks on this website does not imply any affiliation with or endorsement.