



# BenQ EX3415R LCD Monitor Instruction Manual

[Home](#) » [BenQ](#) » BenQ EX3415R LCD Monitor Instruction Manual 

## Contents

- [1 BenQ EX3415R LCD Monitor](#)
- [2 Product Information](#)
- [3 Product Usage Instructions: Recycle Disassemble Instruction](#)
- [4 Disassembly](#)
  - [4.1 Disassembly process](#)
- [5 Documents / Resources](#)
- [6 Related Posts](#)



## BenQ EX3415R LCD Monitor



## Product Information

The product is an LCD Monitor with Model No. EX3415R. It contains hazardous substances like Pb and BFRs, which are covered by exemptions under the RoHS directive. However, the majority is present in the printed circuit board assembly. To reduce emissions as much as possible, a complete disposal of the old appliance is required. This treatment may only be performed in authorized handling plants.

## **Product Usage Instructions: Recycle Disassemble Instruction**

If you want to dispose of the product, follow these instructions:

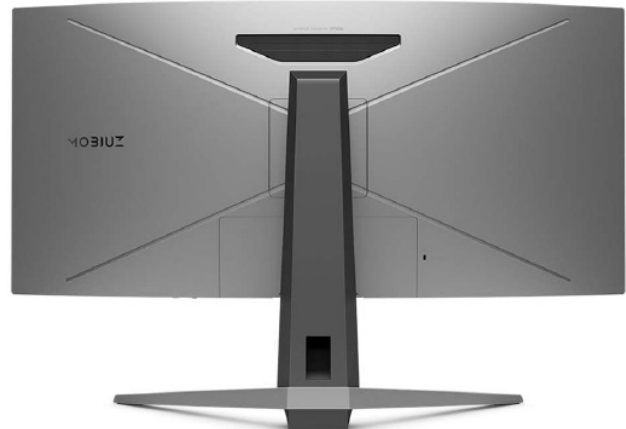
1. Gather all the disassembly tools required for the process, including Philips Screwdriver for M3 Screw, Nosed Pliers, Diagonal Cutting Pliers, Slotted screwdriver, Six Point Sockets, Philips Screwdriver for M2.5 Screw, and Knife.
2. Start the disassembly process, which will take approximately 30 minutes to complete.
3. After disassembly, dispose of the product in an authorized handling plant to reduce emissions as much as possible.

### **Materials and components with hazardous content**

LCDs may contain hazardous substances like Pb and BFRs which are covered by exemptions under the RoHS directive. However, the majority is present in the printed circuit boards assembly. In order to reduce emissions as much as possible, a complete disposal of the old appliance is required. This treatment may only be performed in authorized handling plants.








**Product Name:** LCD Monitor

**Model No.:** EX3415R



## **Disassembly**

### **Disassembly Tools**

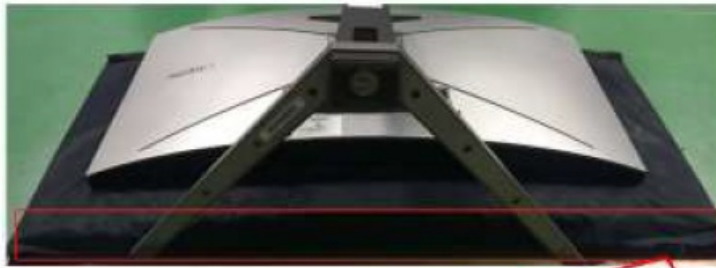
Tool	picture
Philips Screwdriver for M3 Screw	
Nosed Pliers	
Diagonal Cutting Pliers	
Slotted screwdriver	
Six Point Sockets	
Philips Screwdriver for M2.5 Screw	
Knife	

#### Disassembly process

#### Disassembly:

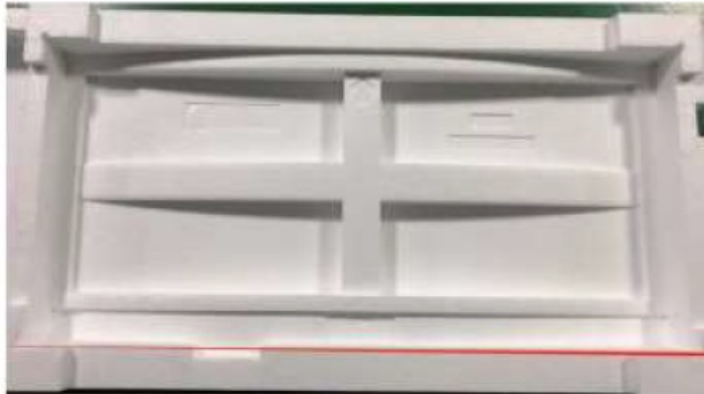
Remove the stand and base.

1. Place the monitor face down on a smooth surface first.



**Note:** this model is designed to use the curved surface screen, it is a must to put the above soft cushion for panel protection in case of any screen scratch or damage.

**Option 2:** If no above cushion, you can use the below bottom cushion of EX3415R.

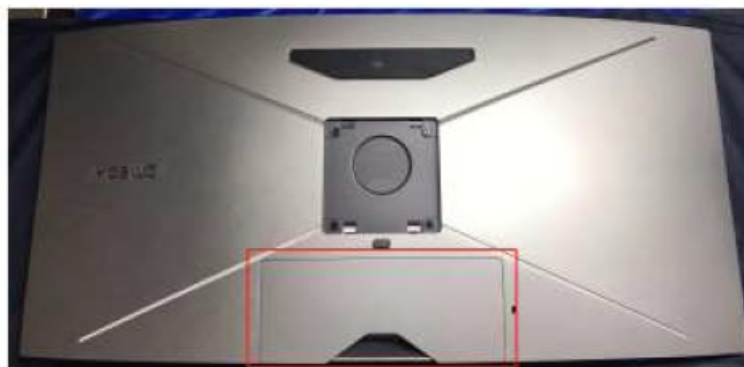


2. Use your fingers to release the screw located at the bottom of the base, then press the release button to remove stand.



## Remove the stand

1. Use the tool to remove the 10 cover.



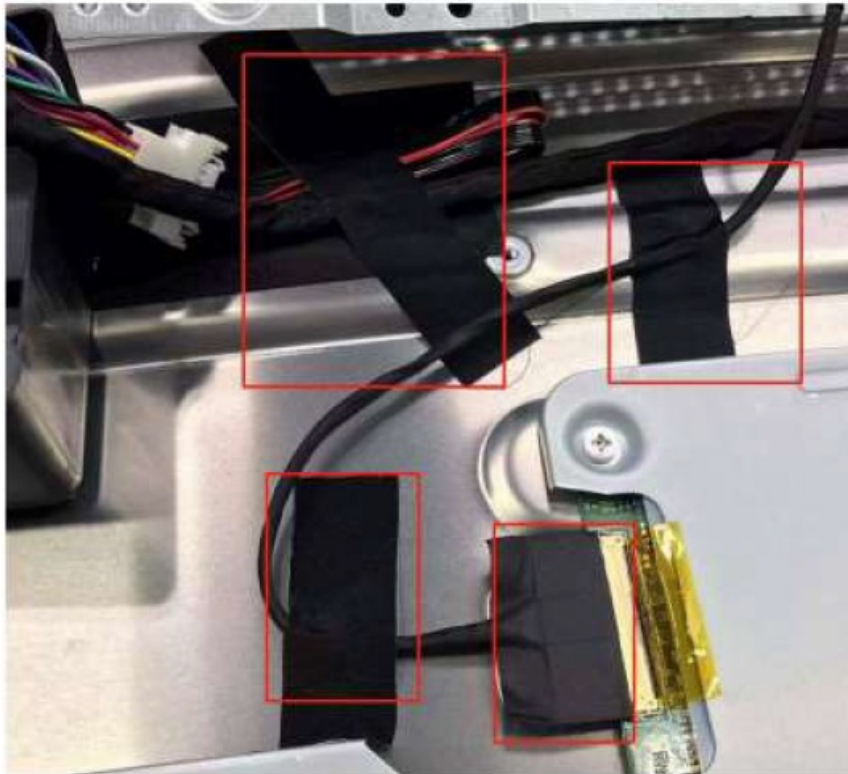
2. Release the screws and use the tool (not provided) to open all the latches slowly and carefully from the bottom side of back cover.



**Remove the main frame from the panel.**

1. Remove all the tapes.
2. Release the screws located on the side of main frame and disconnect all the cables.
3. Carefully lift up the main frame and disconnect the cable.





4. Release the screws to remove the larger speaker.

(**Note:** Do not touch the below part of the speaker in yellow remark, it will cause speaker damage.)

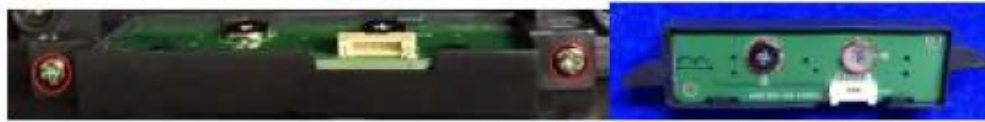


### Separate the board from the main frame

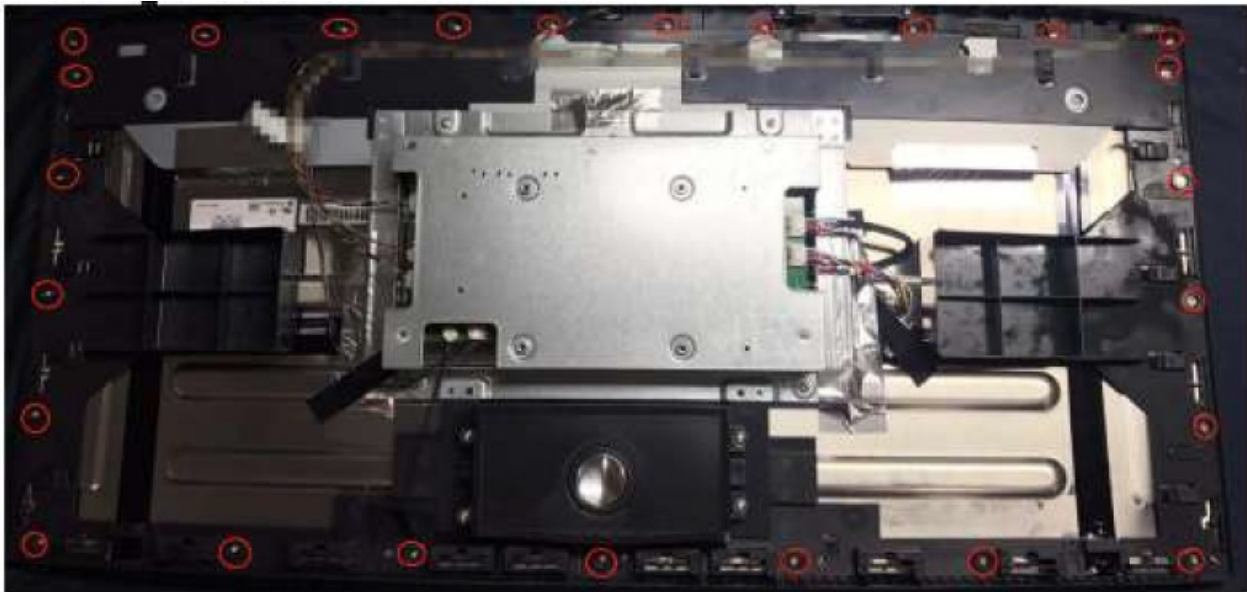
1. Turn over the mainframe, and release all the screws to separate main board from main frame.



2. =Release the screws in sequence to separate keyboard.

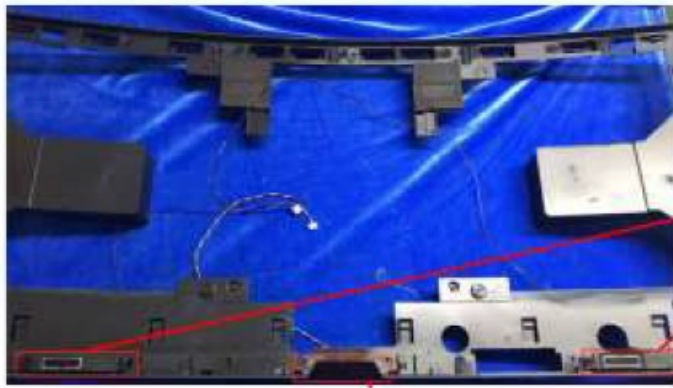


**Release all the screws to remove the middle frame.**

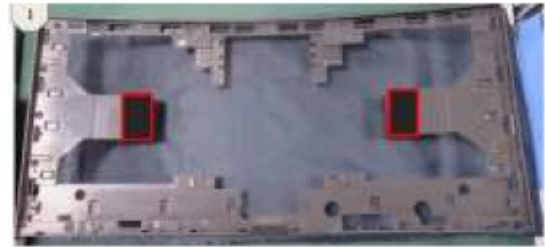


**Remove IR board and smaller speakers from middle frame.**

1. Take out the cover first, then release the screws on the top of board.
2. Make sure the sponge is located in the place, DO not tear up!



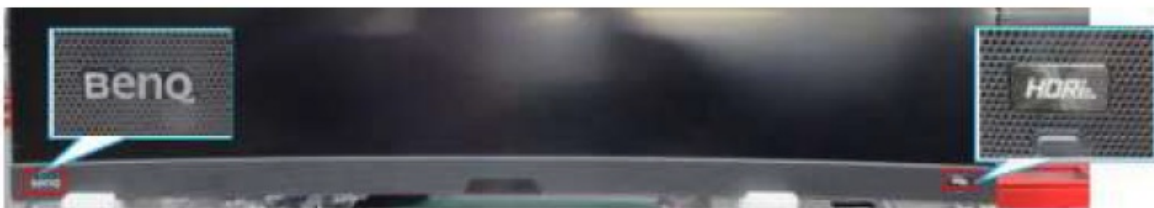
Note: Do not touch the yellow portion for the speaker, it will casue speaker damage.



Take out the bezel from the panel, then remove the HDR keyboard from the bezel by releasing the screw.



Make sure the HDR, BENQ logo and sponge are located in the place. DO not remove



Make sure the back cover is as below showed, No need to disassemble the red marked.

## Disassembly Time

Total time: 30 minutes

## Documents / Resources



**BenQ EX3415R LCD Monitor** [pdf] Instruction Manual  
EX3415R LCD Monitor, EX3415R, LCD Monitor, Monitor