



BenQ EX Series Mobius LCD Monitor User Guide

[Home](#) » [BenQ](#) » BenQ EX Series Mobius LCD Monitor User Guide 

Contents

- [1 BenQ EX Series Mobius LCD Monitor](#)
- [2 BenQ MOBIUZ LCD Monitor Quick Start Guide](#)
 - [2.1 EX Series](#)
 - [2.2 Package Contents](#)
 - [2.3 Setup](#)
 - [2.4 Adjustments](#)
 - [2.5 Video Connections](#)
 - [2.6 Audio Connections](#)
 - [2.7 Power On](#)
 - [2.8 VESA Mounting](#)
 - [2.9 Installing Software](#)
 - [2.10 Remote Control](#)
 - [2.10.1 Non-Europe](#)
 - [2.10.2 Europe](#)
 - [2.11 Specifications](#)
 - [2.12 FAQ](#)
 - [2.12.1 Documents / Resources](#)
 - [2.12.1.1 References](#)
 - [2.12.2 Related Posts](#)





BenQ MOBIUZ LCD Monitor Quick Start Guide

EX Series

Model: DN:EX20U-EQ-V2

© 2024 BenQ Corporation. All rights reserved. Rights of modification reserved.

Package Contents

- LCD Monitor
- Stand
- Base
- Power Cord
- Power Adapter
- Remote Control (May not include CR2032 battery)
- HDMI Cable
- USB-C™ Cable
- USB-C™ to USB-A Cable

- Quick Start Guide
- Safety Instructions
- Regulatory Statements

Setup

1. Remove the monitor and stand from the packaging.
2. Attach the stand to the monitor.
3. Secure the base to the stand.

For a setup video, scan the QR code.

Adjustments

Adjust the monitor tilt between -5° and 15°.

Video Connections

Connect your video source using one of the following:

- HDMI
- DisplayPort (DP)
- USB-C

Audio Connections

Connect audio devices using:

- Soundbar via eARC HDMI
- Headphones via audio jack

Power On

Press the power button to turn on the monitor.

VESA Mounting

Use M4 x 10 mm screws to mount the monitor using a VESA-compatible bracket.

Installing Software

Download and manage color modes for game titles using Color Shuttle from [support.BenQ.com](https://support.benq.com).

Remote Control

Non-Europe

Insert battery into the remote control.

Europe

- 1. Open the battery compartment.
- 2. Insert the battery.
- 3. Close the compartment.

Ensure the remote is within 6 meters and 60° of the monitor for optimal performance.

Specifications

Feature	Details
Temperature Range	0-40°C (Operating), -20-60°C (Storage)
Humidity Range	10%-90% (Operating), 10%-90% (Storage)

FAQ

What should I do if the remote control doesn't work?

Ensure the battery is inserted correctly and the remote is within range.

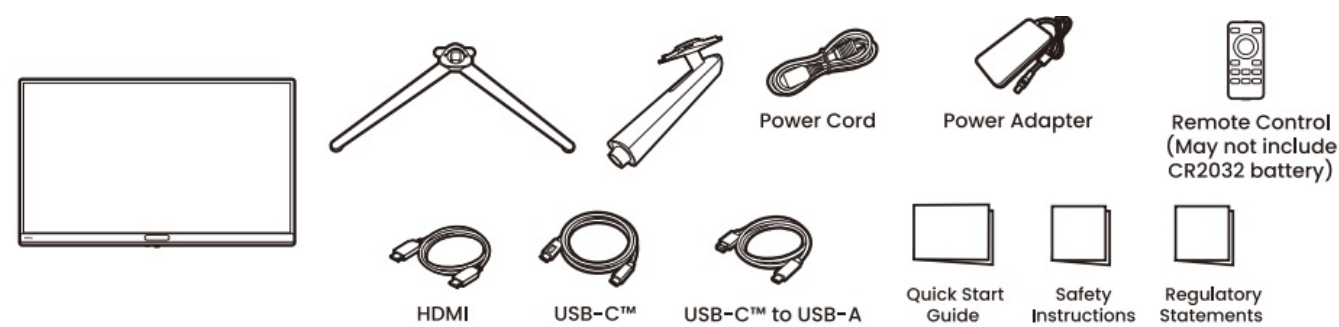
How do I adjust the monitor's tilt?

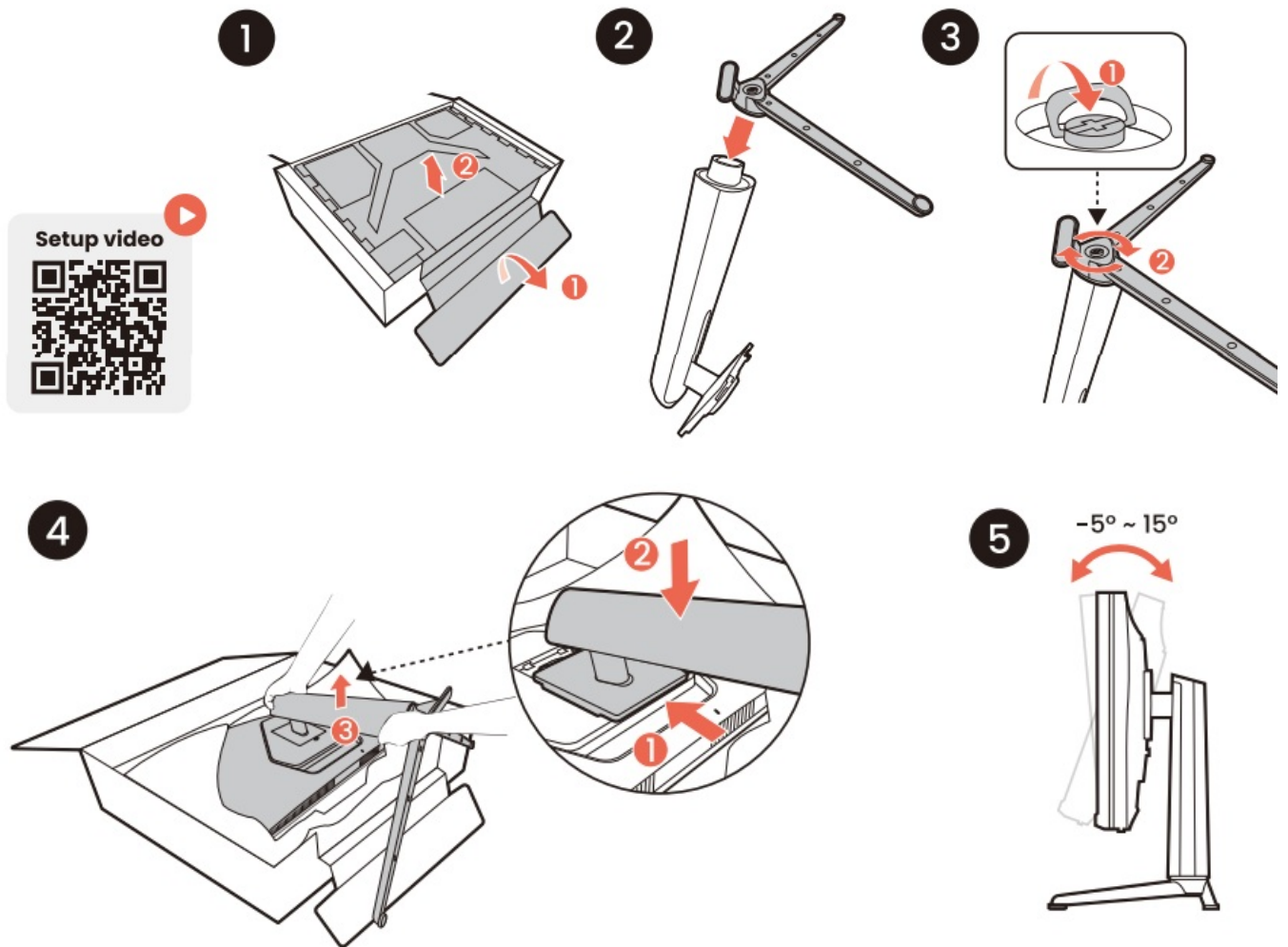
Gently push or pull the top of the monitor to tilt between -5° and 15°.

Where can I find the software for color modes?

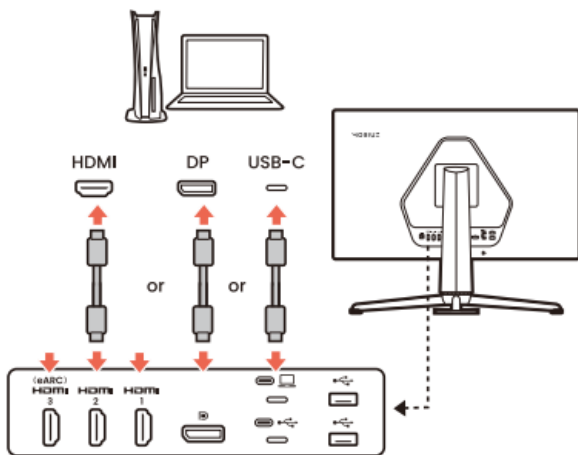
Visit [support.BenQ.com](https://support.benq.com) and download Color Shuttle.

For more information, scan the QR code for warranty information, online manual, product support, and software download.

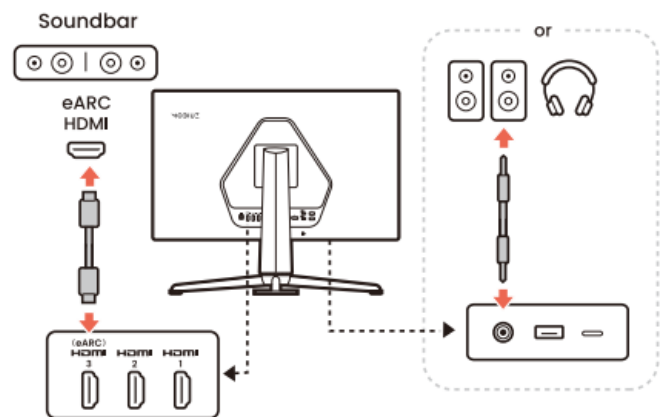




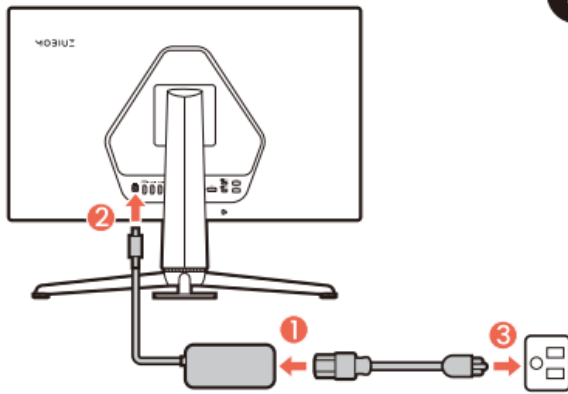
6 Video



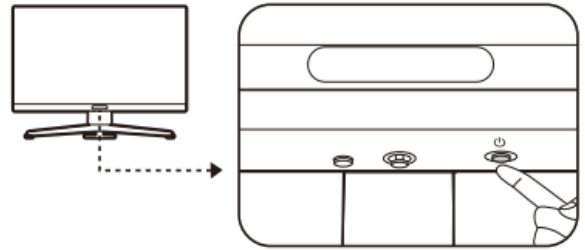
7 Audio



8



9



BenQ's Gaming Monitor

Unveil the Unseen

AI-Driven Technologies

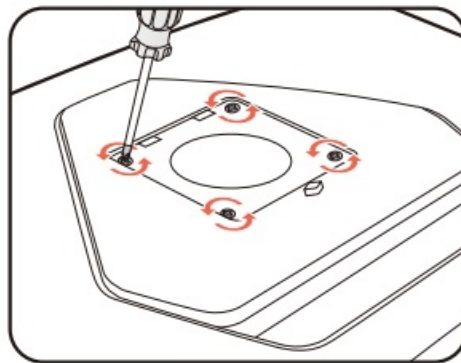
Shadow Phase

Gamer-Experienced Colors

Color modes

Sci-fi | **Fantasy** | **Realistic**

Setup for gaming



M4 x 10 mm

Support.BenQ.com



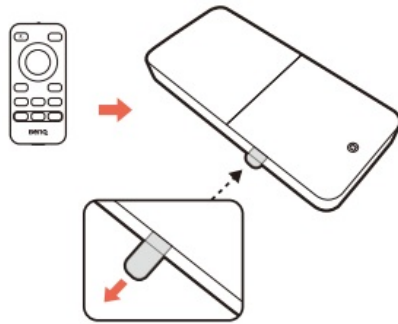
Color Shuttle



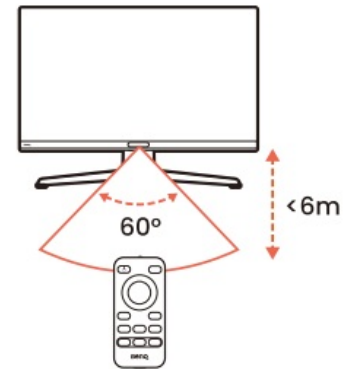
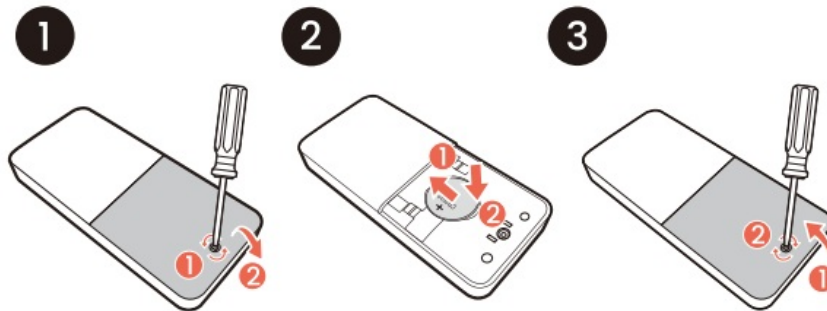
Color Shuttle



Non-Europe



Europe



Support.BenQ.com



Warranty
Information



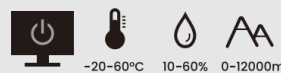
Online
Manual



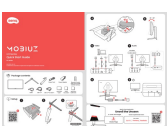
Product
Support



Software
Download



Documents / Resources



[BenQ EX Series Mobiuz LCD Monitor](#) [pdf] User Guide

EX Series Mobiuz LCD Monitor, EX Series, Mobiuz LCD Monitor, LCD Monitor, Monitor

References

- [User Manual](#)

[Manuals+.](#) [Privacy Policy](#)

This website is an independent publication and is neither affiliated with nor endorsed by any of the trademark owners. The "Bluetooth®" word mark and logos are registered trademarks owned by Bluetooth SIG, Inc. The "Wi-Fi®" word mark and logos are registered trademarks owned by the Wi-Fi Alliance. Any use of these marks on this website does not imply any affiliation with or endorsement.