



BenQ e-Reading lamp User Guide

[Home](#) » [BenQ](#) » BenQ e-Reading lamp User Guide 

Contents

- 1 BenQ e-Reading lamp
- 2 How to Use
- 3 How to Install
- 4 How to Assemble
 - 4.1 Model with Pedestal Base
 - 4.2 Model with Table Clamp
- 5 Quick Start Guide
 - 5.1 For Screen Reading :
 - 5.2 For Paper Reading :
- 6 Documents / Resources
 - 6.1 References
- 7 Related Posts



BenQ e-Reading lamp



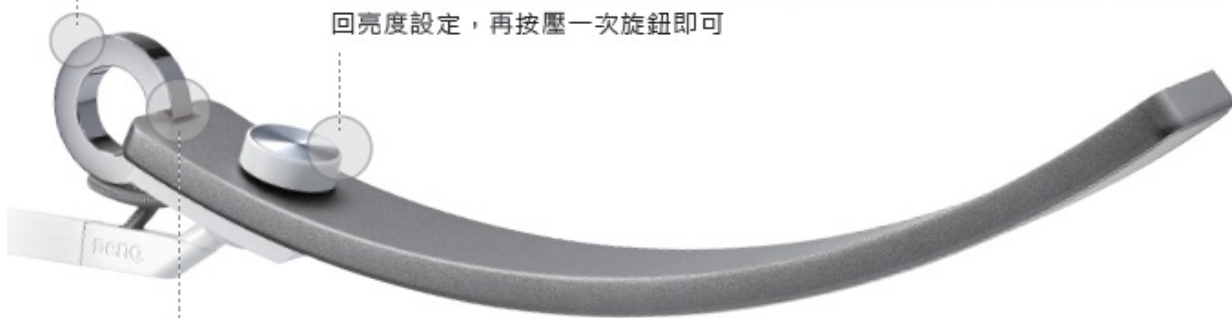
How to Use

Turn on / off the light : Tap the metal ring

開 / 關燈：輕觸金屬環


Rotate the knob to adjust brightness. Press the knob to switch to the color temperature adjustment, and you can rotate the knob to adjust color temperature. Press the knob again to switch back to the brightness adjustment

轉動旋鈕可調整亮度，按壓旋鈕進入色溫設定，此時再轉動旋鈕可調整色溫，若要再切回亮度設定，再按壓一次旋鈕即可



Auto dimming mode

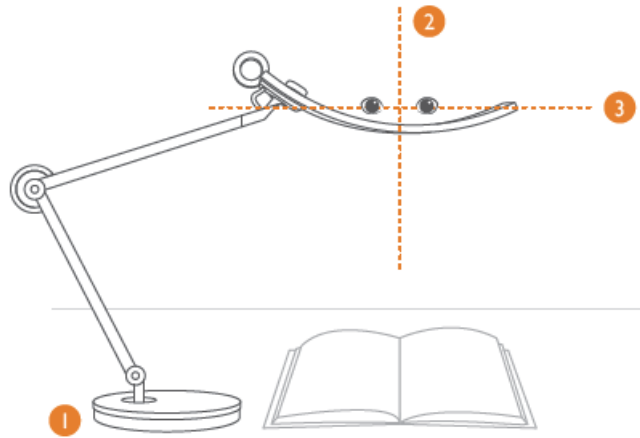
自動調光模式

 Book-Reading Mode : Touch the metal ring for 2 seconds. The indicator lights up orange
書本閱讀：長碰金屬環 2 秒鐘（指示燈亮橘色）

 Screen-Reading Mode : Touch the metal ring for 2 seconds. The indicator lights up green
螢幕閱讀：再次長碰金屬環 2 秒鐘（指示燈亮綠色）

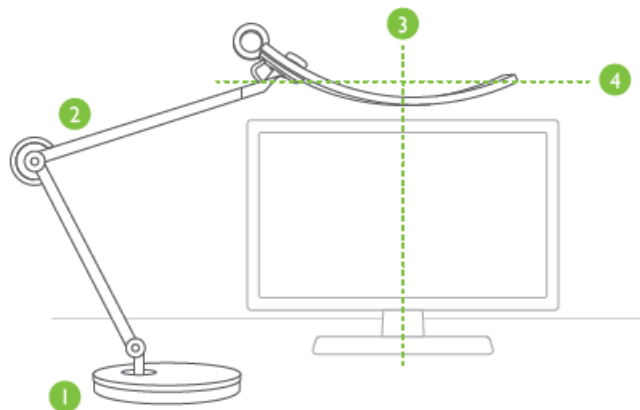
How to Install

for Book-Reading



1. Place the lamp on the desk
2. Align the center of the lamp head with the center of your eyes and ensure that both ends of the lamp head are at the same height
3. Adjust the height of the lamp head to make it slightly lower than your eyes

for Screen-Reading

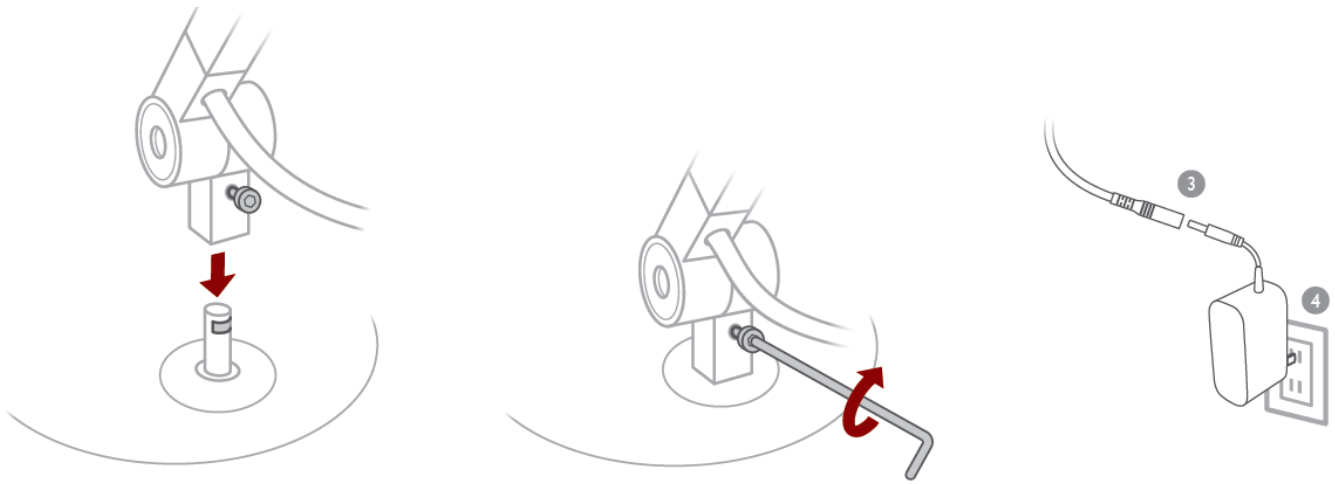


1. Place the lamp on the desk
2. Adjust the lamp arm to put the lamp head in front of the screen
3. Adjust the height of the lamp head to avoid blocking your screen
4. Align the center of the lamp head with the center of the screen and ensure that both ends of the lamp head are at the same height

Note : If the lamp head is higher than your eyes, please tilt the lamp head slightly forward to prevent you from looking directly into the light

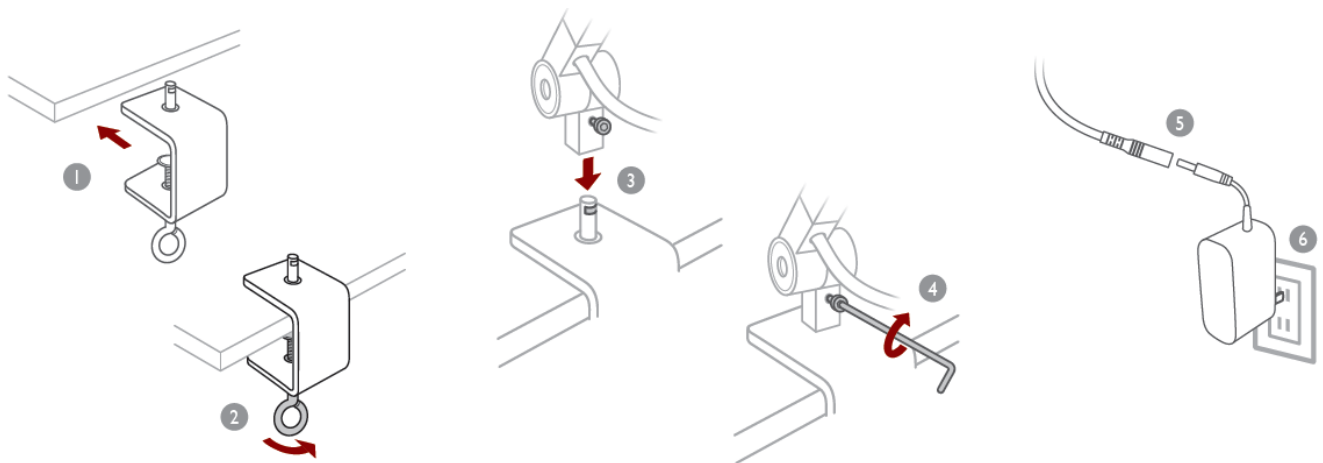
How to Assemble

Model with Pedestal Base



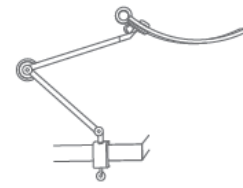
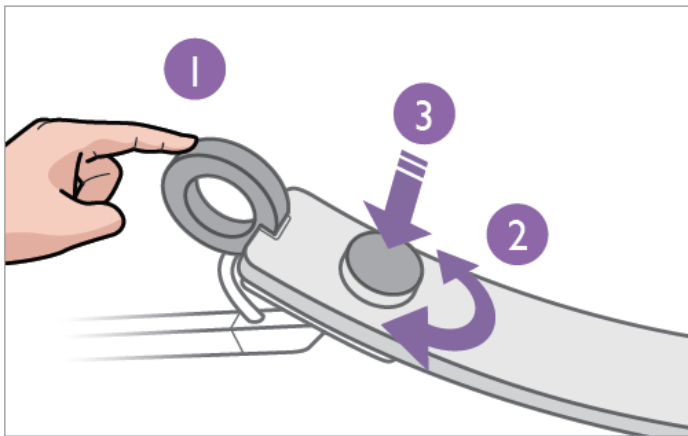
1. Insert the shaft on the pedestal base all the way into the hole on the end of the lamp arm
2. Tighten the screw on the lamp arm with the hex L-key
3. Connect the power cord to the power adapter
4. Plug the adapter into a power outlet

Model with Table Clamp



1. Place the table clamp at the edge of the desk
2. Tighten the screw of the clamp
3. Insert the shaft on the clamp all the way into the hole on the end of the lamp arm
- Notice :** Please align the screw with the groove of the metal shaft before inserting
4. Tighten the screw on the lamp arm with the hex L-key
5. Connect the power cord to the power adapter
6. Plug the adapter into a power outlet

Quick Start Guide

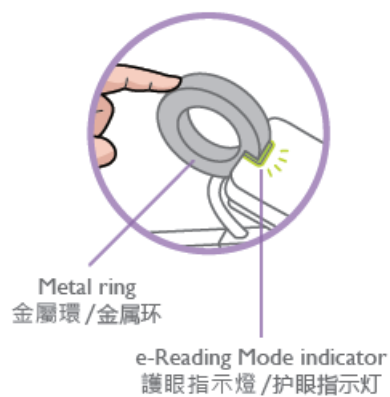


BenQ e-Reading lamp



BenQ Genie e-Reading lamp

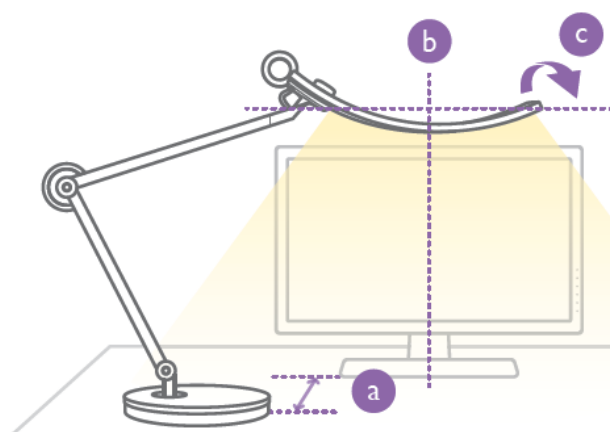
1. Touch the metal ring to turn on/off. Touch and hold the metal ring to activate e-Reading Mode (The e-Reading Mode indicator will light up).
2. Rotate the dial to adjust brightness.



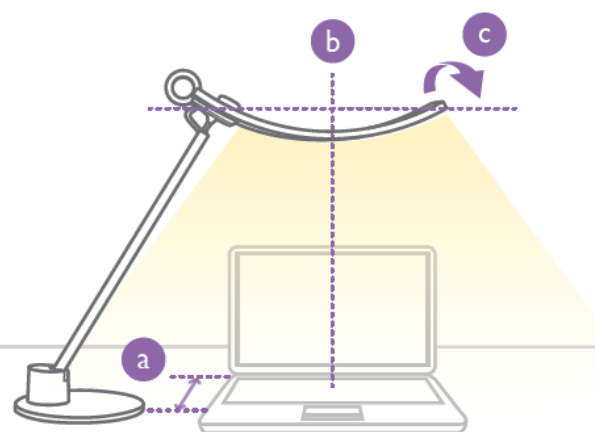
3. Press and rotate the dial to adjust color temperature.
Press and rotate the dial again to return to brightness adjustment.

- Do not push downwards past the point of pivot.
- Do not hold the metal ring when adjusting the angle of the lamp.
- Please hold the stand and the arm when moving the lamp.

For Screen Reading :



BenQ e-Reading lamp

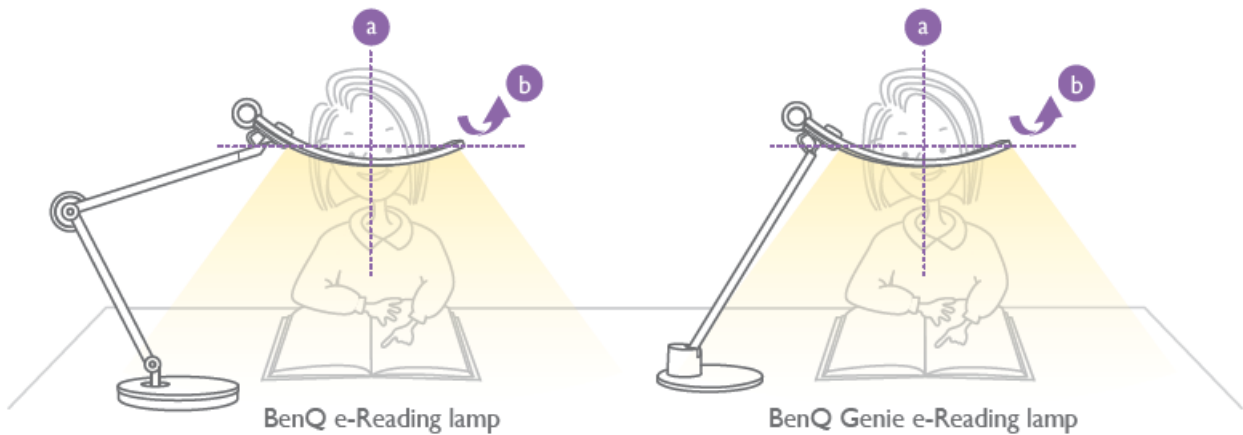


BenQ Genie e-Reading lamp

- Position the lamp head in front of the screen.


- The center of the light source should be aligned with the center of the screen and both ends of the curved light source should be equal in height.
- The lamp head should be positioned as far away from the screen frame as possible in order to avoid reflected glare. If the lamp head is higher than your eyes, please tilt the lamp head slightly toward the back of the screen to avoid looking directly into the light.

For Paper Reading :



- Align the center of the light source with the center of your eyes and ensure that both ends of the curved light source are equal in height.
- Adjust the lamp head so that it is slightly lower than your eyes.
Otherwise, please tilt the lamp head slightly forward to avoid looking directly into the light.

Documents / Resources

<div> <div>Identifying the Model of Your Lamp</div> <div> <p>Check if the sticker  is there on the rear of the lamp.</p> <p>If yes, then use the QR code to identify the lamp.</p> <p>If not, then use the QR code to identify the lamp.</p> </div> <div> <p>請確認燈具背面是否有貼上QR碼。</p> <p>若有，請使用QR碼來識別燈具。</p> <p>若無，請使用QR碼來識別燈具。</p> </div> </div>	<div> <div>BenQ e-Reading lamp [pdf] User Guide</div> <div>e-Reading, lamp, BenQ</div> </div>
--	---

References

- [LCD Monitors, Projectors, Speakers and Lighting | BenQ US](#)