



BenQ AQ COLOR LCD Monitor PD00-Q-V2 User Guide

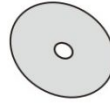
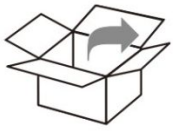
[Home](#) » [BenQ](#) » BenQ AQ COLOR LCD Monitor PD00-Q-V2 User Guide 



LCD Monitor
Quick Start Guide
DesignVue Designer Monitor
PD Series

ON: PD00-Q-V2

©2019 BenQ Corporation. All rights reserved. Rights of modification reserved.



Headphone hook



HDMI



DP to mini DP



USB



DP
(Optional)

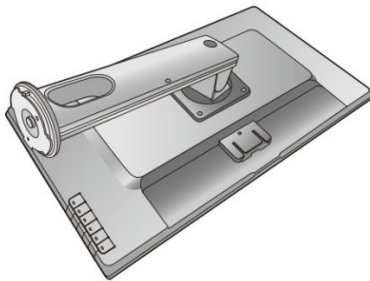


Audio
(Optional)

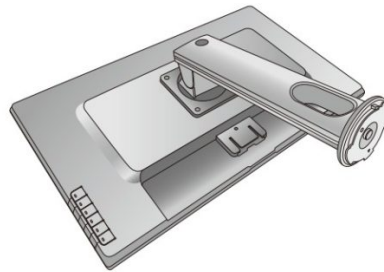
1

2

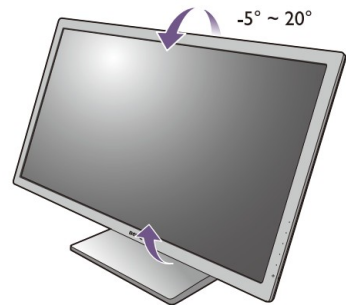
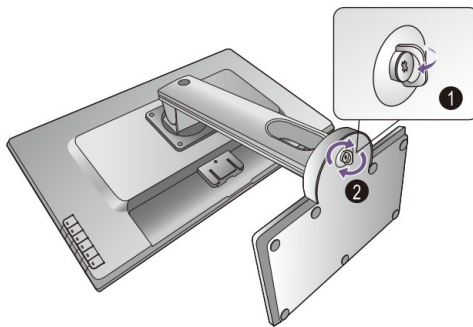
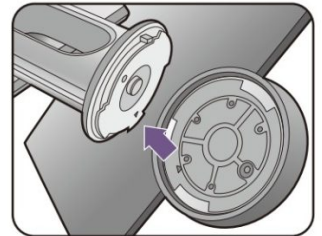
3



4



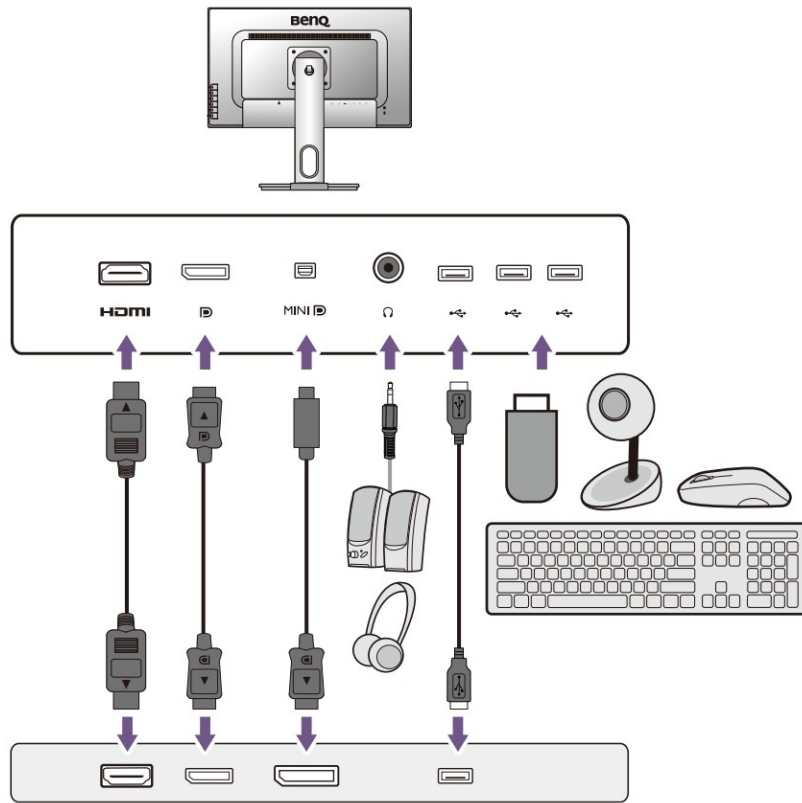
5



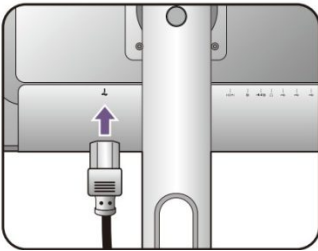
6 Video

7 Audio

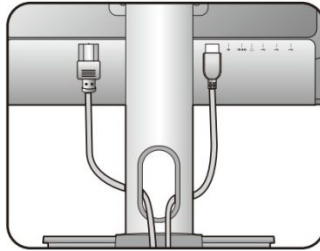
8 USB



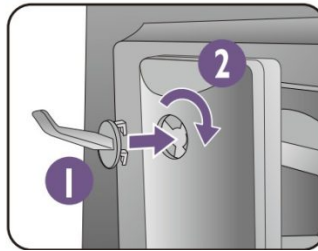
9



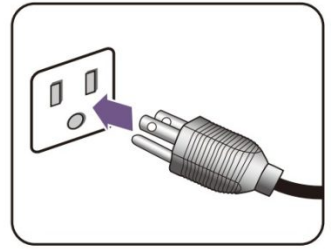
10



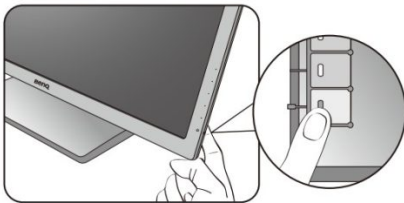
11



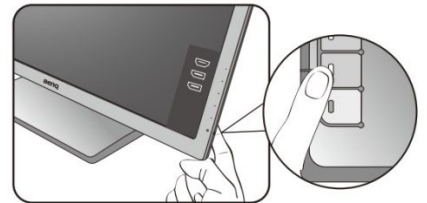
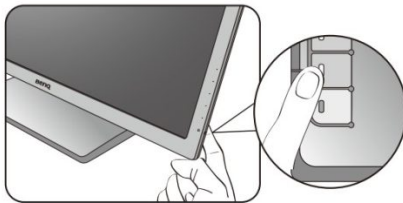
12

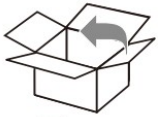


13

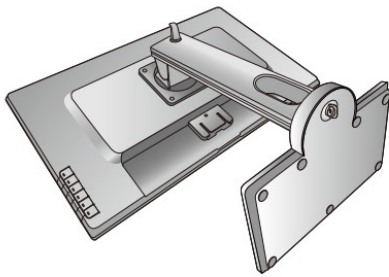


14

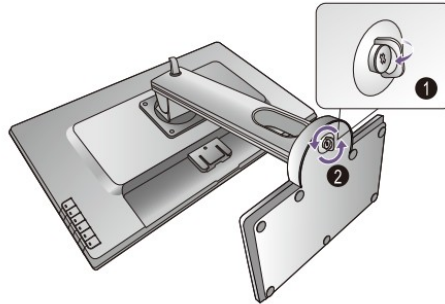




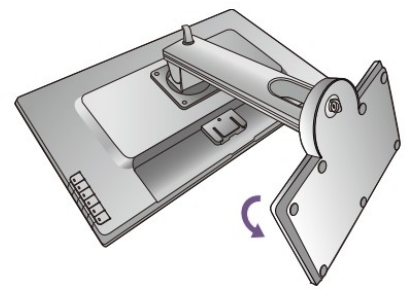
1



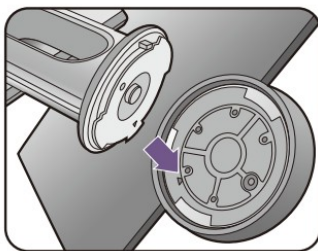
2



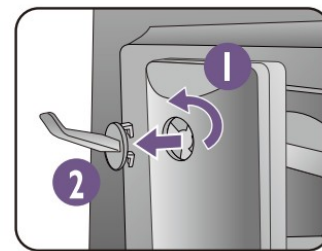
3



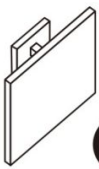
4



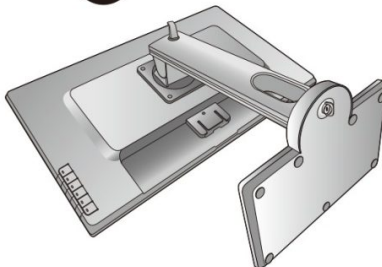
5



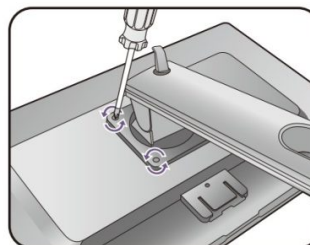
6



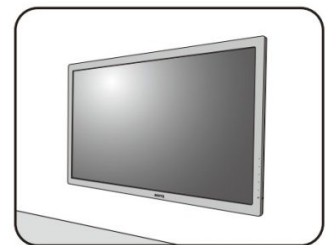
1



2



3



M4 x 10 mm

PD2700Q



<http://www.benq.com/en/monitor/designer/pd2700q.html>

CAD/CAM Mode



<http://www.youtube.com/watch?v=vvmKJ3xtXBY>

Animation Mode



<http://www.youtube.com/watch?v=ucbadnAkPA8>

Dual View



http://www.youtube.com/watch?v=oik_R-p0xpw&ab_channel=BenQGlobal

Adjusting the screen resolution

Due to the nature of liquid crystal display (LCD) technology, the picture resolution is always fixed. For the best display performance, please set the display to its maximum resolution that is the same as the monitor aspect ratio. This is called “Native Resolution” or maximal resolution that is the clearest picture. Lower resolutions are displayed on a full screen through an interpolation circuit. Image blurring across pixel boundaries can occur with the interpolated resolution depending upon the image type and its initial resolution.



To find out the monitor aspect ratio and a native resolution of the purchased model, please check the Specification document on the provided CD.




- To take full advantage of LCD technology you should select the native resolution setting of your PC screen as described below. Be aware that not all PC video cards provide this resolution value. If yours doesn't, check with the video card manufacturer's website for an updated driver for your particular model PC video card which supports this resolution. Software video drivers are often updated and available for new hardware video resolutions. If necessary, you may need to replace and update the PC video card hardware to be able to support the native resolution of the monitor.
- Depending on the operating system on your PC, different procedures should be followed to adjust the screen resolution. Refer to the help document of your operating system for details.

1. Open **Display Properties** and select the **Settings** tab.

You can open Display Properties by right-clicking on the Windows desktop and selecting Properties from the pop-up menu.

2. Use the slider in the 'Screen area' section to adjust the screen resolution.

Select the recommended resolution (maximum resolution) then click Apply.


 If you select some other resolution, be aware that this other resolution is interpolated and may not accurately display the screen image as well as it could do at the native resolution setting.

3. Click **OK** then **Yes**.
4. Close the Display Properties window. If your input source does not provide an image that is the same as the monitor aspect ratio, the displayed image may appear stretched or distorted. To maintain the original aspect ratio, image scaling options can be found in the "Display Mode" adjustment. See the user manual for more information.

Adjusting the screen resolution 1

Adjusting the screen refresh rate

You don't have to choose the highest possible refresh rate on an LCD display, because it is not technically possible for an LCD display to flicker. The best results are obtained by using the factory modes already set in your computer. Check the next chapter to see the factory modes: Preset display modes on page 3.

 Depending on the operating system on your PC, different procedures should be followed to adjust the screen resolution. Refer to the help document of your operating system for details.

1. Double click the **Display** icon in **Control Panel**.
2. From the **Display Properties** window, select the Settings tab and click the **Advanced** button.
3. Select the **Adapter** tab, and select an appropriate refresh rate to match one of the applicable factory modes as listed in the specification table.
4. Click **Change**, **OK**, then **Yes**.
5. Close the Display Properties window.

Adjusting the screen refresh rate

Preset display modes

	Incoming display mode (Input timing)						
input signal	Resolution :	1280 x 10 24	1366 x 76 8	1440 x 90 0	1600 x 90 0	1680 x 10 50	1920 x 10 80
	Aspect	5:4	16:9	16:10	16:9	16:10	16:9
	640x480@60Hz	v	v	v	v	v	v

D-Sub I DVI / HDMI / DP	640×480@75Hz(')	v	v	v		v	v
	720×400@70Hz(*)	v	v	v	v	v	v
	800×600@60Hz	v	v	v	v	v	v
	800×600@75Hz(*)	v	v	v	v	v	v
	832×624@75Hz(*)	v	v	v	v	v	v
	1024×768@60Hz	v	v	v	v	v	v
	1024×768@75Hz(**)	v	v	v	v	v	v
	1152×870@75Hz(**)	v	v	v	v	v	v
	1280×800@60Hz	v		v	v	v	v
	1280×720@60Hz	v		v	v	v	v
	1280×960@60Hz	v	v	v	v	v	v
	1280×1024@60Hz	v					
	1280×1024@75Hz(**)	v				v	v
	1360×768@60Hz					v	v
	1440×900@60Hz		v				
	1600×900@60Hz			v		v	
	1680×1050@60Hz				v		v
	1920×1080@60Hz					v	v
	1920×1200@60Hz						v
DVI-Dual Link	2560×1440@60Hz						

/ HDMI / DP	3840×2160@30Hz						
HDMI 2.0 / DP 1.2	3840×2160@60Hz						
	4096×2160@60Hz						
DP 1.3	5120×2280@60Hz						



*: Not available for GW2870.

**: Not available for GW2870 / GC2870.

Preset display modes 3

Input signal	Incoming display mode (Input Resolution 2560 x 1440 Aspect ratio 16:9)		Timing (continued)		5120 x 2280 16:9
			3840 x 2160 16:9	4096 x 2160 16:10	
	640×480@60Hz	v	v	v	v
	640×480@75Hz	v	v	v	v
	720×400@70Hz	v	v	v	v
	800×600(4)60Hz	v	v	v	v
	800×600@61.7514Hz	v	v	v	v
	832×624@75Hz	v	v	v	v
	1024×768@60Hz	v	v	v	v
	1024×768@75Hz	v	v	v	v
	1152×870@75Hz	v	v	v	v

D-Sub / DVI / HDMI / DP	1280×800(g60Hz	v	v	v	v
	1280×720@60Hz	v	v	v	v
	1280×960@60Hz				
	1280×1024@60Hz	v	v	v	v
	1280×1024@75Hz	v	v	v	v
	1360×768@60Hz				
	1440×900@60Hz				
	1600×900(g60Hz	v	v	v	v
	1680×1050@60Hz	v	v	v	v
	1920×1080@60Hz	v	v	v	v
	1920×1200@60Hz				
	1920×1200@60Hz				
DVI-Dual Link / HDMI / DP	2560×1440@60Hz	v	v	v	v
	3840×2160(g30Hz		v		v
HDMI 2.0 / DP 1.2	3840×2160@60Hz		v		v
	4096×2160@60Hz			v	
DP 1.3	5120×2280@60Hz				v



To make sure the above timing works, check the compatibility and specifications of your graphic card first.



For 18.5-inch models, pay attention to the following:

- For the first time using this monitor with the resolution 1360×768, the default Display Mode is Aspect.
- If the video card cannot display or normally display with the native resolution of 1366×768, please adjust the resolution to 1360×768.

Image disruption may occur as a result of signal frequency differences from graphic cards which do not correspond with the usual standard. This is not, however, an error. You may improve this situation by altering an automatic setting or by manually changing the phase setting and the pixel frequency from the “DISPLAY” menu.

11/4/2015

4 Preset display modes

Contents

[1 Documents /](#)

[Resources](#)

[2 Related Posts](#)

Documents / Resources



[BenQ AQ COLOR LCD Monitor PD00-Q-V2](#) [pdf] User Guide

AQ COLOR, LCD Monitor, PD00-Q-V2, BenQ