

bemi COSMO Tracker Smart Watch



## bemi COSMO Tracker Smart Watch User Manual

[Home](#) » [bemi](#) » bemi COSMO Tracker Smart Watch User Manual 

### Contents

- 1 bemi COSMO Tracker Smart Watch
- 2 Product Description
- 3 Frequently Asked Questions
- 4 Product Description
- 5 Charging
- 6 Pairing the device with the phone via APP
- 7 Introduction to Function available for Device Interface
- 8 Documents / Resources
  - 8.1 References
- 9 Related Posts



bemi COSMO Tracker Smart Watch



## Specifications

- Type of Screen: TFT 1.3 inch
- Heart Rate Sensor
- Thermometer
- Battery Capacity: 150 mAh
- Protection Level: IP68

## Product Description

The smartwatch model COSMO comes with various features including a screen, charging terminal, heart rate sensor, thermometer, and power button. It is essential to read the user manual before using the device.

## Charging Instructions

Before using the device, ensure the battery is charged. Use the provided charging clip and a power adapter with 5V, 1A output. Follow these steps to charge:

1. Open the charging clip and insert the device.
2. Ensure the charging clip pins make contact with the device pins.
3. Close the charging clip.
4. Connect the USB cable to a power source.
5. If done correctly, a charging graphic will appear on the screen.

## Installation of APP and Pairing

The product is compatible with smartphones running Android 4.4 or iOS 8.0 and later versions with Bluetooth 4.0 or higher. Follow the instructions to pair your phone with the device.

## Additional Information

To turn the device on or off, press the power button for 5 seconds. For sleeping or waking up the screen, press the power button briefly.

## Manufacturer Details

Manufacturer: Shenzhen Minrek Electronic Ltd.

Address: C602, 6th Floor, Building C, Hangcheng Road, Huafeng International Robot Industrial Zone, Xi'xiang, Bao'an, Shenzhen, China 518126

Manufactured in China

## Frequently Asked Questions

### Why is the charging graphic not appearing on the screen?

If the device was completely discharged, it may take a few minutes for the charging graphic to appear after connecting the charger. Ensure proper contact between the charging clip and device pins.

### Why does the Bluetooth connection between my phone and device disconnect?

Bluetooth disconnection may occur due to factors such as distance between the phone and device exceeding 10 meters, presence of obstacles like walls, environmental interference, closing background apps, or activating one-button cleaning on the phone.

This manual is available at [www.bemi-electronics.com/manuals](http://www.bemi-electronics.com/manuals)

## Product Description



1. Screen
2. Charging terminal
3. Heart rate sensor
4. Thermometer

## 5. Power button

**Smartwatch model:** COSMO, in manual called “device” It is mandatory to read this manual before start to using the device.

To turn on / off the device, press the power button for 5 seconds.

Press the power key shortly to sleep/wake up the screen.

## Maintaining Equipment

Clean the device regularly, especially part that close to the skin, to keep it dry. Adjust the tightness of the device belt to ensure air circulation. On wrist, where wearing device should not use excessive skin care products. If you have skin allergy or discomfort, please stop wearing device. Do not wear the device during a hot bath or shower. Do not expose the device to cleaning agents, caustic agents or other chemicals. Do not expose the device to high (over + 50 ° C), low (below -10 ° C) temperatures or heat due to, for example, sunlight or other heat source. It may damage the device. The product is not suitable for children and infants. Note: IP68 means that this device is resistant to a single immersion in standing water to a depth of 1.1 meters for up to 1 hour. Exposing the device to tougher conditions can damage it. This device is not intended for water sports, diving and swimming.

## Charging

Before start using the device, please make sure the battery is charged. For charging, please use the provided charging clip. The recommended power adaptor current is 5V, 1A. It takes about 2 hours to fully charge device, please follow the steps below to charge.

1. Open charging clip and place device inside. Charging clip pins must contact with pins in the device.



2. Close charging clip.
3. Connect the charging cable to the power source using USB connector.

4. Charging animation will display on the device screen.

Note: if the device discharged completely then animation of charging may appear after a few minutes.

### Downloading APP for Phone and pair with Device

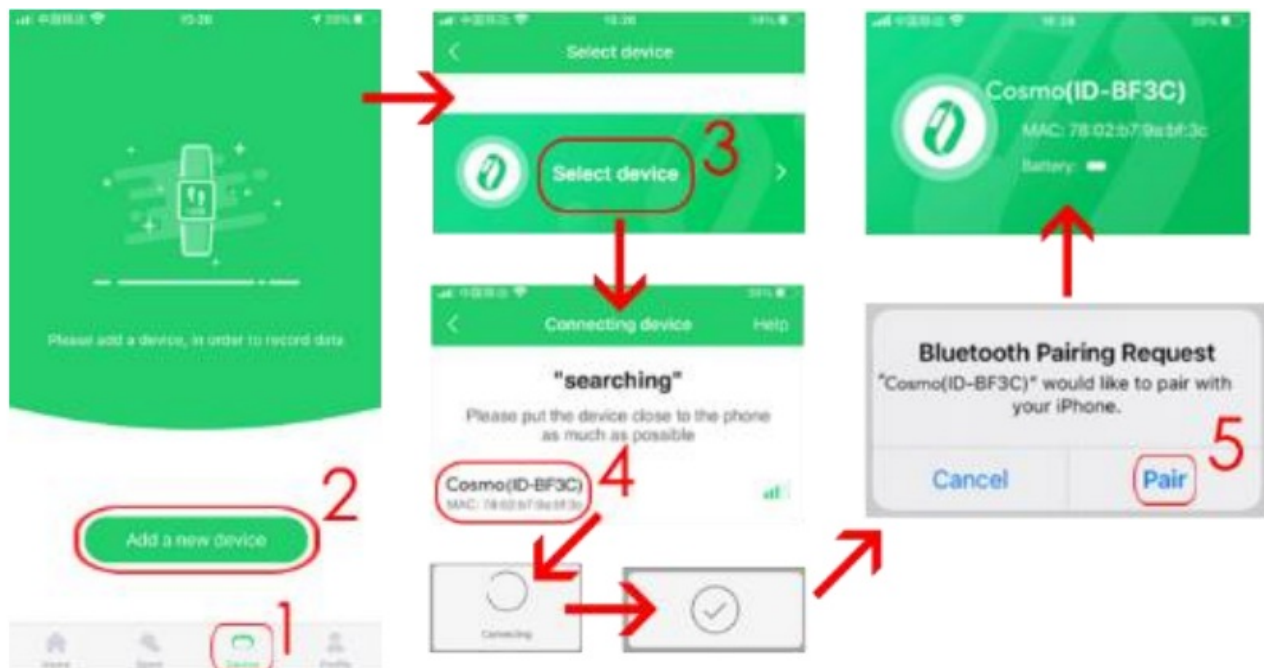
**Note:** mobile phone must support Android 4.4 or IOs 8.0 or above and Bluetooth 4.0 or above. Some application functions may be invisible in older OS versions of the smartphone. Scan QT code with mobile phone to download and install APP or search, download and install “GloryFit” APP from App store or Google Play Store on your smartphone.



### Pairing the device with the phone via APP

While pairing, the phone should be connected to the Internet. Make sure that the smartphone Bluetooth is ENABLE and is “Visible to all nearby Bluetooth devices”

1. Open the GloryFit application and click “Device” at the bottom of APP screen.
2. Click on “Add a new device”
3. Then Tap on “Select device”. APP will search for nearby devices.
4. Click on the name of your device in the device list. APP will pair with device.
5. Click “Pair” to bind device with APP. When successful, device name will appear on top of APP screen.



Bluetooth connection between phone and device may disconnect in some circumstances. The most common of them are: phone and device are too far from each other (more than 10 meters), there are some walls between them, there are some magnetic or radio interference in environment, user close the APP working in



the background, user click on the one-button cleaning of the phone. When the device and APP are first time connected and paired, the time and date will be synchronized with the mobile phone.

## Introduction to Function available for Device Interface

**NOTE:** During test of Heart rate and blood pressure, tested person should keep still. Any action during the test like eating, speaking, etc. will affect the accuracy of the measurement. Factors affecting the lowering of the accuracy of measurement include: tattoos, scars, moisture, thickness, strong pigment and hair of the skin in the place of measurement. Keep the heart rate sensor clean and close to the skin. If you wear it too loosely, the sensor's light will be exposed, resulting in inaccurate measurement values. Do not look directly at the sensor green light. During test, please keep your body inactive and sit still, otherwise, the time of test will be longer or data will be inaccurate. If there is a big difference in the measured data, please take a break and test again. Longtime measurement may lead to overheating of the device. In case of overheating, please remove device until it cools down. The cold weather will affect your measurement results, please measure while keeping warm. Place the device on the wrist correctly and enter the heart rate menu to measure the heart rate. The data of Heart rate, blood pressure and blood oxygen measurement are for reference only and cannot be used as a basis for medical-related aspects.

### Main screen (clock face)

The main menu has additional information that can be accessed by moving the screen up / down or right / left. On the clock face, slide left or right to enter to all available functions.

Swipe up to view received notifications.

Swipe down to enter to menu with information about bluetooth connection status, battery level, date, day of the week and shortcut icons to: do not disturb mode, screen brightness settings, find phone, device info and settings.



### 1. Changing the clock face

To change clock face, press and hold on the screen, then slides left or right to change clock face.

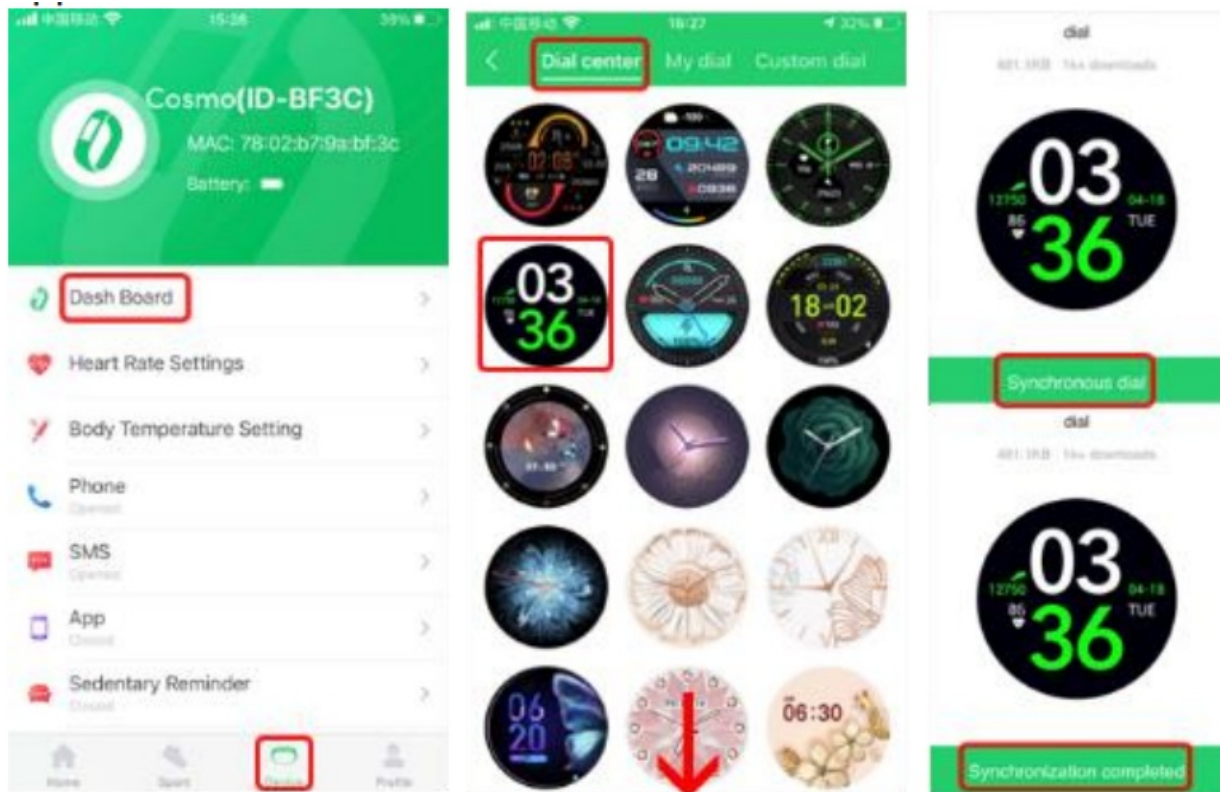


A. The device has the function of setting your own photo as the background of the clock face and a collection of ready-made faces to choose from. Both functions are available from the Gloryfit APP.

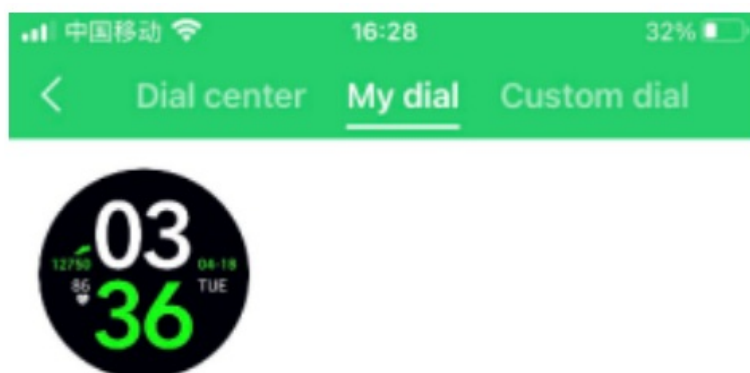
The device should be connected to the application and then enter the “Device” menu at the bottom of the screen and then “Dash Board” at the top.

B. Dial center has a set of preset dials, swipe to the bottom of the screen to see more dials.

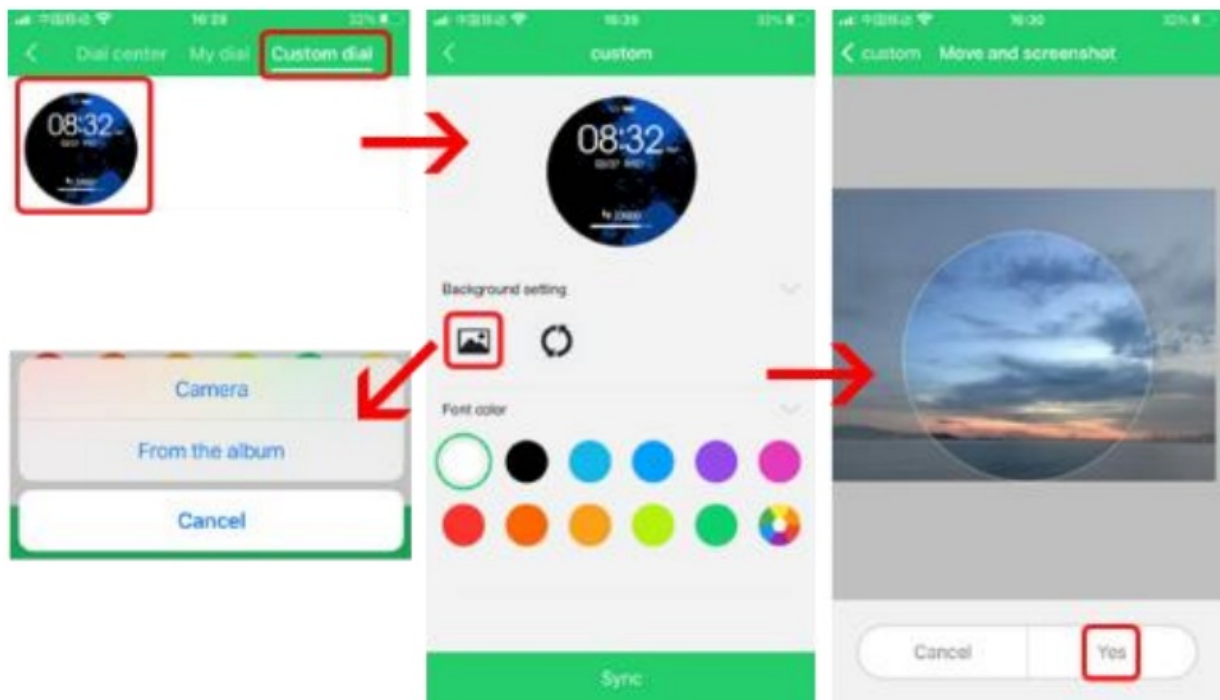
C. Click on the dial and then select “Synchronous dial” to start adding the dial on your watch. After a short while, the dial will appear on the watch.



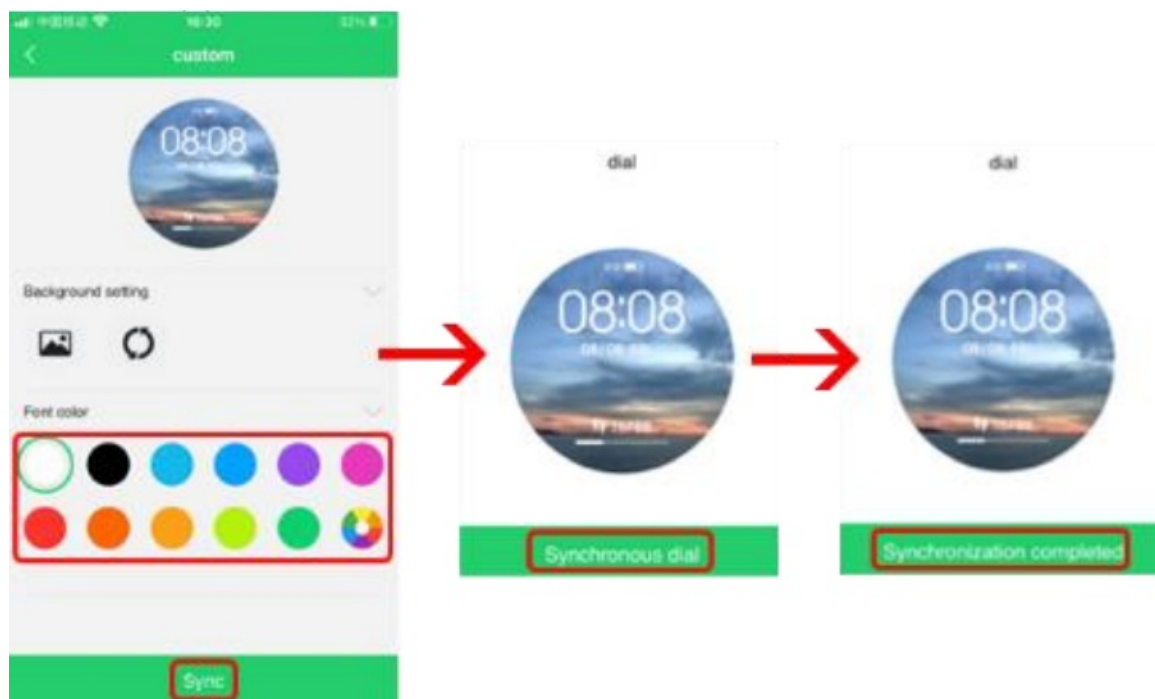
D. Selected clockface will appear in “My dial”.



E. Click on “Custom dial” to design your own clockface then on the available dial. Choose your own photo as the background (from album or take new by camera). Click YES to confirm selection.



Select the font color and click “Sync” at the bottom of screen, then on “Synchronous dial” to confirm. After a short while, the dial will appear on the watch.



**Attention!** Only one dial can be added at a time.

2. **Temperature** – Temperature measurement of body and surface of skin.
3. **Steps** – Steps, calories and distance will count automatically after start of using the device. The data is displayed every specific number of steps, their amount depends on distance already walked and device software version (between 1-25 steps). These data are approximate due to individual differences between



users. In order for the steps to be recorded, the hands should move in a natural manner when walking, for example walking with a stroller may not be read as a step. More data and settings is available in the APP.

4. **Heart rate** – Using LED light to measure heart rate and show status in real time.
5. **Blood pressure** – It measures blood pressure as a one-time result.
6. **Blood Oxygen** – Measures blood oxygen levels as a one-time result.
7. **Sports** – 24 sport modes available.

Enter Sports, then find desired sport mode by sliding up or down. Tap on screen to select and start.

Slide right on the screen to stop, pause or end exercise. 7.3. When the activity time is longer than 1 minute, the data can be saved.

History of record and more data is available in the APP.

8. **Weather** – After connecting the device to the application, the weather forecast will appear on the device.
9. **Sleep** – Sleep quality monitoring.
10. **Notifications** – Enter to view the received notifications. Attention! In order to receive notifications on the device, you must first enable the SMS receiving functions/information about incoming calls and select the applications from which notifications will appear.
11. **Stopwatch** – Click the start icon to start timing.
12. **Timer** – Select the default time of 1/3/5/10/15/30/60 minutes or set your own by pressing the “+” key.
13. **Find** – When your device is connected to the app, click Find Phone and your phone will ring. Move right to turn off.
14. **Music** – Connect your device to the application. Launch any music app. The device allows you to start, pause a track or change it to the next/previous one.
15. **Function** – Enter to view information about software version and MAC number, set brightness level, reset or turn off the device.

**Note:** The device and the data collected by it cannot be used for medical purposes.

Basic Parameters: Screen type: 1,3 inches TFT; Heart rate sensor, thermometer, battery capacity: 150 mAh; protection level: IP68

**Proper disposal of this product.** The device cannot be disposed of together with household waste. To prevent potential threats to the environment and human health due to improper disposal of waste, it is mandatory to take used electronic equipment to a designated collection point, or to the place where the product was purchased for the purpose of recycling electronic waste.

**Warning:** Lithium battery inside.

This device, smartwatch model COSMO, is in compliance with Directive 2014/53/EU of the European Parliament and of the Council. The complete declaration of conformity is available online at the following link: [www.bemi-electronics.com/certificates](http://www.bemi-electronics.com/certificates)

This manual is not covered by the warranty, and the appearance and/or functionality of the software installed on the device may be different from the one described. The Guarantor reserves the right to modify the instruction manual at any time without prior notice.

Maximum power consumption – 0.1W; Standard power consumption – 0.088W; Power consumption in standby mode – 0.5mW; Operating Frequency Range of device – 2,4 GHz Manufacturer: Shenzhen Minrek Electronic Ltd.

**Address:** C602, 6th Floor, Building C, Hangcheng Road, Huafeng International Robot Industrial Zone, Xi'xiang, Bao'an, Shenzhen, China 518126

Made in China

## **Documents / Resources**



**[bemi COSMO Tracker Smart Watch](#) [pdf] User Manual**  
COSMO Tracker Smart Watch, COSMO, Tracker Smart Watch, Smart Watch, Watch

**References**

- [electronics.com](#)
- [electronics.com](#)
- [User Manual](#)

[Manuals+](#), [Privacy Policy](#)

This website is an independent publication and is neither affiliated with nor endorsed by any of the trademark owners. The "Bluetooth®" word mark and logos are registered trademarks owned by Bluetooth SIG, Inc. The "Wi-Fi®" word mark and logos are registered trademarks owned by the Wi-Fi Alliance. Any use of these marks on this website does not imply any affiliation with or endorsement.