



## Bellman Symfon BE1450 Portable Receiver User Manual

[Home](#) » [Bellman Symfon](#) » Bellman Symfon BE1450 Portable Receiver User Manual 

### Contents

- [1 Bellman Symfon BE1450 Portable Receiver](#)
- [2 Read this first](#)
- [3 Overview](#)
  - [3.1 Getting started](#)
  - [3.2 Power LED indications](#)
  - [3.3 Personalizing your receiver](#)
- [4 General warnings](#)
  - [4.1 Regulatory symbols](#)
  - [4.2 Technical specifications](#)
- [5 Troubleshooting](#)
- [6 Documents / Resources](#)
  - [6.1 References](#)
- [7 Related Posts](#)



**Bellman Symfon BE1450 Portable Receiver**



## **Read this first**

This booklet guides you on how to use and maintain your new Portable receiver. Ensure you read this booklet carefully, including the Warnings section. This will help you get the most out of your product. If you have additional questions, contact your hearing care professional.

### **Intended purpose**

The intended purpose of the Visit system is to alert deaf and hard of hearing people of important signals in their home.

### **Intended user**

A person with mild to severe hearing loss or deafness.

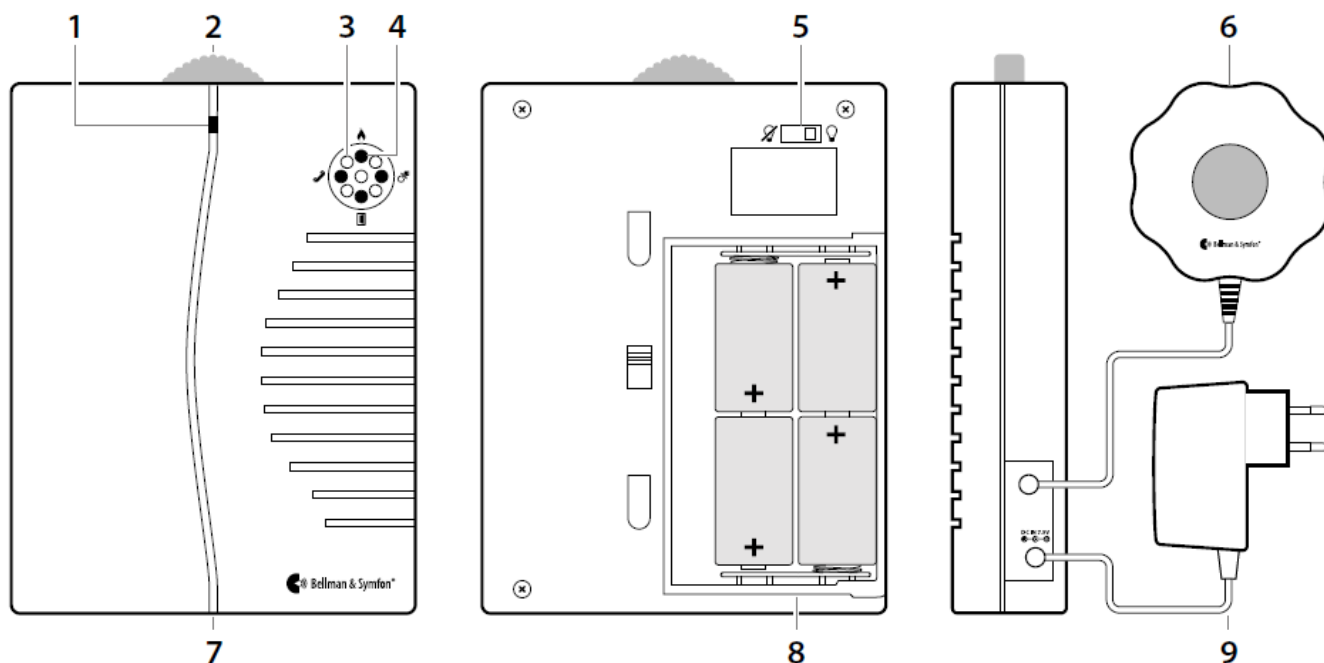
### **Intended user group**

The intended user group consists of people of all ages with mild to severe hearing loss or deafness that need audio, visual or sensory amplification.

### **Principle of operation**

The Visit alerting system consists of a set of wirelessly connected transmitters and receivers that are located across the home. When a transmitter detects an activity, it signals the Visit receiver that alerts the user with sound, flashes or vibrations. In order to use the system, you need at least one transmitter and one receiver.

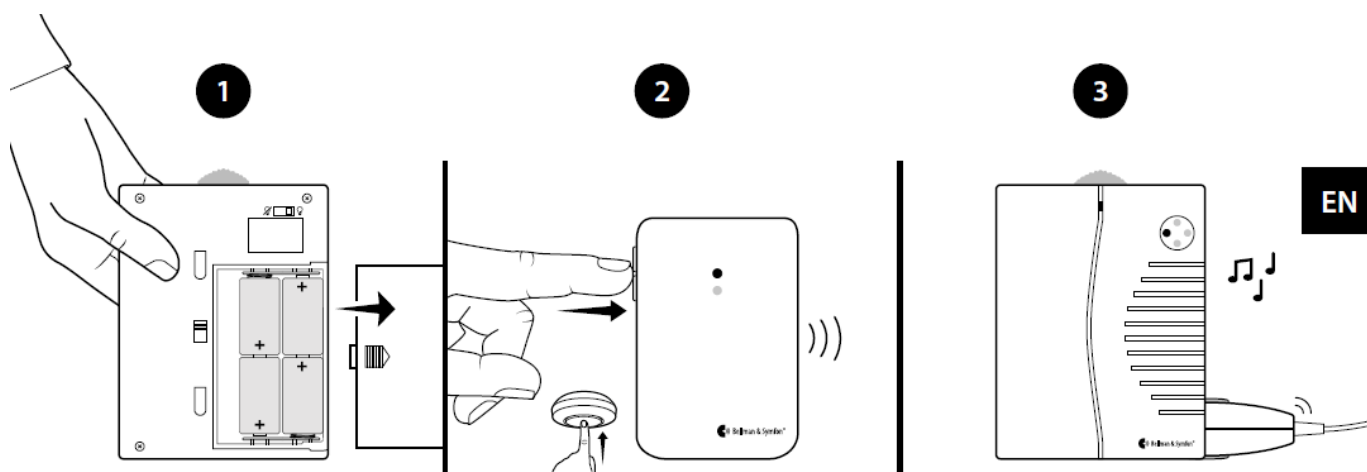
## **Overview**



1. Power LED
2. Volume dial
3. Flash LEDs
4. Visit LEDs
5. Flash signal switch
6. BE1270 Bed shaker
7. Test button
8. Battery compartment
9. Optional power supply

## Getting started

1. Slide open the battery cover, fit the batteries and close the cover again.  
Place the receiver on a level surface or mount it on the wall using the wall bracket.
2. To test the radio link you need a Visit transmitter. Press the test button/s on the transmitter.
3. The receiver lights up a Visit LED (4) and starts to flash and sound. If a bed shaker (6) is connected, it will vibrate. A short press on the test button (7) repeats the last indication. If nothing happens, see Troubleshooting.



### Default signal pattern

When a transmitter is activated, the Portable receiver lights up a LED and begins to sound and flash. If you have connected a bed shaker, it starts to vibrate with a certain pace. This is called signal pattern. The transmitters determine the pattern, and the default is:

Transmitter	Portable receiver			Bed shaker
Activated source	Visit LED	Sound	Flash	Vibration
▪ Door transmitter	Green	Door chime	Yes	Slow
▪ Push button transmitter	Green	Door chime	Yes	Slow
▪ Telephone transmitter	Yellow	Ring signal	Yes	Medium
▪ Baby monitor	Orange	Baby melody	Yes	Fast
▪ Smoke alarm	Red	Fire horn	Yes	Long
▪ CO alarm	Orange/red	Emergency alert	Yes	Long

### Power LED indications

The power LED (1) on the front of the flash receiver indicates what's happening:

- Steady green light – the receiver is powered by a power supply accessory (9).
- Lights up in green during activation – the receiver is working and the battery level is fine.
- Lights up in yellow during activation – the receiver is working, but the batteries are nearly depleted. To change batteries, slide open the battery cover and replace the old batteries with four 1.5 V LR14 alkaline batteries. See the battery compartment (8) for correct positioning.

### Personalizing your receiver

#### Adjusting the volume and flash

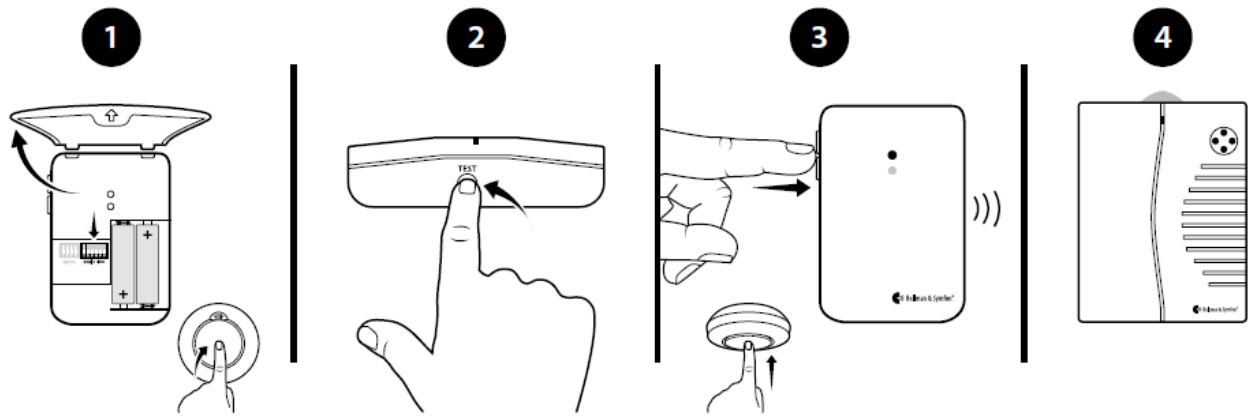
Adjust the volume to your liking using the red volume dial (2) on the top of the receiver. It goes from 0 to 93 dBA at 1m distance with a main frequency range of 500 – 1000 Hz. Use the flash signal switch (5) on the back of the receiver to turn the flash off/on.

#### Changing the radio key

If your Visit system is activated for no reason, there is probably a nearby system that triggers yours. In order to avoid radio interference, you need to change the radio key on all units. The radio key switches are located on the transmitters.

1. Open the transmitter cover and move any radio key switch to the up (on position) to change the radio key. See Changing the radio key for the relevant transmitter.
2. Press and hold the test button (7) located on the bottom of the portable receiver until the green and yellow Visit LEDs blink alternately. Release the button.
3. Press the test button/s on the transmitter within 30 seconds to send the new radio key.
4. All Visit LEDs (4) on the receiver blink 5 times to show that the radio key has been changed.

**Note** that all Visit units must be set to the same radio key.



## General warnings

This section contains important information about safety, handling and operating conditions. Keep this booklet for future use. If you are just installing the device, this booklet must be given to the householder.

## Hazard warnings

- Failure to follow these safety instructions could result in fire, electric shock, or other injury or damage to the device or other property.
- Keep this device out of reach of children under 3 years.
- Be aware that alarms and notifications can be missed if batteries run out.
- Do not use or store this device near any heat sources such as naked flames, radiators, ovens or other devices that produce heat.
- Protect cables from any potential source of damage.
- Do not dismantle the device; there is a risk of electric shock. Tampering with or dismantling the device will void warranty.
- This device is designed for indoor use only. Do not expose the device to moisture.
- Use only power adapters and battery types that are specified in this leaflet.
- Protect the device from shocks during storage and transport.
- Do not make any changes or modifications to this device. Use only original Bellman & Symfon accessories to avoid any electrical shock.
- Batteries are toxic. Do not swallow them! Keep out of reach of children and pets. If they are swallowed, consult your physician immediately!

## Information on product safety

- Failure to follow these instructions could result in damage to the device and void the warranty.
- Do not expose batteries to fire or to direct sunlight.
- Do not drop your device. Dropping onto a hard surface can damage it.
- Do not use the device in areas where electronic equipment is prohibited.
- The device may only be repaired by an authorized service center.
- If a serious incident occurs in relation to this device, contact the manufacturer and relevant authority.
- If you encounter other problems with your device, contact the point of purchase, your local Bellman & Symfon.

office or the manufacturer. Visit [bellman.com](http://bellman.com) for contact info.

- Without permission granted by the NCC, no company, enterprise or user is allowed to change the frequency, enhance the transmitting power or alter the original characteristics or performance on an approved low power radio frequency device.
- This device should not be used on aircrafts unless specifically permitted by flight personnel.

### **Configuration options**

This BE1450 Visit portable receiver can be configured with the following Visit transmitters and Bellman & Symfon original accessories:

### **Compatible Visit transmitters**

- BE1411 Visit door transmitter
- BE1420 Visit pushbutton transmitter
- BE1431 Visit telephone transmitter
- BE1433 Visit mobile phone transmitter
- BE1481 Visit smoke alarm transmitter
- BE1551 Visit smoke alarm transmitter
- BE1555 Visit CO alarm transmitter
- BE1491 Visit baby monitor

### **Available accessories**

- BE1270 Bed shaker
- Power supply unit, UK
- Power supply unit, Europe

For detailed product information, see the corresponding user manual.

### **Operating conditions**

Operate the device in a dry environment within the temperature and humidity limits stated in this leaflet. If the device gets wet or is exposed to moisture, it should no longer be regarded as reliable and should therefore be replaced.

### **Cleaning**

Disconnect all cables before you clean your device. Use a soft, lint-free cloth. Avoid getting moisture in openings. Do not use household cleaners, aerosol sprays, solvents, alcohol, ammonia or abrasives. This device does not require sterilization.

### **Service and support**

If the device appears to be damaged or doesn't function properly, follow the instructions in the user guide and this leaflet. If the product still doesn't function as intended, contact your local hearing care professional for information on service and warranty.

### **Warranty conditions**

Bellman & Symfon guarantees this product for two (2) years from date of purchase against any defects that are due to faulty materials or workmanship.

This guarantee only applies to normal conditions of use and service, and does not include damage resulting from accident, neglect, misuse, unauthorized dismantling, or contamination howsoever caused. This guarantee

excludes incidental and consequential damage. Furthermore, the warranty does not cover Acts of God, such as fire, flood, hurricanes and tornadoes.

This warranty gives you specific legal rights and you may also have other rights that vary with territory. Some countries or jurisdictions do not allow the limitation or exclusion of incidental or consequential damages, or limitations on how long an implied warranty lasts, so the above limitation may not apply to you. This guarantee is in addition to your statutory rights as a consumer. The above warranty may not be altered except in writing signed by both parties hereto.

### **Compliance information**

Hereby Bellman & Symfon declares that, in Europe, this product is in compliance with the essential requirements of the Medical Device Regulation EU 2017/745 as well as the directives and regulations listed below. The full text of the declaration of conformity can be obtained from Bellman & Symfon or your local Bellman & Symfon representative. Visit [bellman.com](http://bellman.com) for contact information.

- Radio Equipment Directive (RED)
- Medical Device Regulation (MDR)
- Restriction of Hazardous Substances Directive (RoHS)
- REACH Regulation
- Waste Electrical & Electronic Equipment (WEEE)
- EC Battery Directive

### **ISO Certification of legal manufacturer**

Bellman is certified in accordance with SS-EN ISO 9001 and SS-EN ISO 13485.

SS-EN ISO 9001 Certification Number: CN19/42071

SS-EN ISO 13485 Certification Number: CN19/42070

### **Certification Body**

SGS United Kingdom Ltd

Rossmore Business Park Ellesmere Port Cheshire CH65 3EN UK

### **Regulatory symbols**

#### **MD**

With this symbol, Bellman & Symfon confirms that the product meets the Medical Device Regulation EU 2017/745.

#### **SN**

This symbol indicates the manufacturer's serial number so that a specific medical device can be identified. It's available on the product and gift box.

#### **REF**

This symbol indicates the manufacturer's catalogue number so that the medical device can be identified. It's available on the product and gift box.



This symbol indicates the medical device manufacturer, as defined in EU Directives 90/385/EEC, 93/42/EEC and 98/79/EC.



This symbol indicates that the user should consult the instructions for use.

⚠ This symbol indicates that it is important for the user to pay attention to the relevant warning notices in the user guides.

This symbol indicates important information for handling and product safety.



Temperature during transport and storage:  $-10^{\circ}$  to  $50^{\circ}$  C,  $14^{\circ}$  to  $122^{\circ}$  F  
Temperature during operation:  $0^{\circ}$  to  $35^{\circ}$  C,  $32^{\circ}$  to  $95^{\circ}$  F



Humidity during transportation and storage:  $<90\%$ , non-condensing  
Humidity during operation:  $15\%$  to  $90\%$ , non-condensing



Atmospheric pressure during operation, transportation and storage: 700hpa to 1060hpa

### Operating conditions

This device is designed such that it functions without problems or restrictions if used as intended, unless otherwise noted in the instructions for use.

### CE

With this CE symbol, Bellman & Symfon confirms that the product meets EU standards for health, safety, and environmental protection as well as the Radio Equipment Directive 2014/53/EU.



■ This symbol indicates that the product shall not be treated as household waste. Please hand over your old or unused product to the applicable collection point for the recycling of electrical and electronic equipment or bring your old product to your hearing care professional for appropriate disposal.

### Technical specifications

#### • Dimensions

165 x 130 x 36 mm, 6.5 x 5.1 x 1.4"

#### • Weight

590 g, 20.8 oz. including batteries

#### • Battery power

4 x 1.5V LR14 (C) alkaline batteries

#### • Mains power

7.5 V DC / 1500 mA with optional power adapter

#### • Power consumption Active:

1000 mA, idle position: 0.1 mA

#### • Operating time

2 – 3 years with alkaline batteries

#### • Sound signal

Adjustable up to 93 dBA @ 1 m, frequency range: 500 – 1000 Hz

Produces individual sound signatures

#### • Light signal



4 colored LEDs that react to the incoming Visit signals 5 white LEDs that alert with a clear light signal

- **Bed shaker outlet**

Vibration power: 2.0 – 4.0 VDC (max. 500 mA)

- **Radio frequency**


868.30 MHz.

- **Coverage** 50 – 250 m, 55 – 273 yards depending on the characteristics of the building. Coverage is reduced if walls and large objects block the signal.

- **In the box**

- BE1450 Visit portable receiver
- 4 x 1.5V LR14 batteries
- Wall bracket
- Screws and plugs

## Troubleshooting

If	Try this
The receiver seems to be turned off	<ul style="list-style-type: none"><li>▪ The batteries are depleted. Replace them with 4 × 1.5V LR14 alkaline batteries.</li></ul>
The power LED is yellow when the receiver is activated	<ul style="list-style-type: none"><li>▪ The battery level is low. Replace them with 4 × 1.5V LR14 alkaline batteries.</li></ul>
The receiver does not respond when a transmitter is activated, but works when I use the test button	<ul style="list-style-type: none"><li>▪ Check the transmitter batteries and connections.</li><li>▪ Move the receiver closer to the transmitter to make sure it's within radio range.</li><li>▪ Check that the receiver is set to the same radio key as the other units in the Visit system, see <b>Changing the radio key</b>.</li></ul>
The receiver is activated for no apparent reason	<ul style="list-style-type: none"><li>▪ There is probably another Visit system installed nearby that triggers your system. Change the radio key on all units, see <b>Changing the radio key</b>.</li></ul>
The receiver is too quiet	<ul style="list-style-type: none"><li>▪ Turn up the volume using the red volume dial on the top of the unit.</li></ul>
The receiver is not flashing	<ul style="list-style-type: none"><li>▪ Check that the flash signal switch on the back of the unit is set to the ON  position.</li></ul>

### Manufacturer

Bellman & Symfon Group AB Södra Långebergsgatan 30 436 32 Askim Sweden Phone +46 31 68 28 20

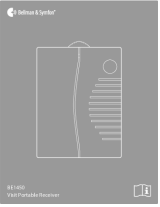
E-mail [info@bellman.com](mailto:info@bellman.com) [bellman.com](http://bellman.com)

**Revision:** BE1450\_039MAN1.0

**Date of issue:** 2022-04-22

TM and © 2022 Bellman & Symfon AB. All rights reserved.

## Documents / Resources



[Bellman Symfon BE1450 Portable Receiver](#) [pdf] User Manual  
BE1450 Portable Receiver, BE1450, Portable Receiver, Receiver

## References

-  [Bellman & Symfon | Start](#)

Manuals+,