

BELL HOWELL FS400-A1 Socket LED Fan Light



# BELL HOWELL FS400-A1 Socket LED Fan Light Instruction Manual

[Home](#) » [BELL HOWELL](#) » BELL HOWELL FS400-A1 Socket LED Fan Light Instruction Manual 

## Contents

- 1 BELL HOWELL FS400-A1 Socket LED Fan Light
- 2 Product Information
- 3 Product Usage Instructions
- 4 ASSEMBLY
- 5 USING THE REMOTE
- 6 SPECIFICATIONS
- 7 FCC STATEMENT
- 8 Documents / Resources
  - 8.1 References
- 9 Related Posts

bell<sup>+</sup>howell

BELL HOWELL FS400-A1 Socket LED Fan Light



## Product Information

### Specifications

- **Model:** 127
- **Power:** 7KW
- **Compatibility:** Universal
- **Dimensions:** Not specified
- **Weight:** Not specified

### Product Usage Instructions

#### Step 1: Installation

1. Choose a suitable location for the product.
2. Ensure the product is placed on a stable surface.
3. Connect the power supply to the product.

#### Step 2: Setup

1. Turn on the product by pressing the power button.
2. Follow the on-screen instructions to complete the initial setup.
3. Configure any desired settings, such as language and time zone.

### Step 3: Operation

1. To perform a basic function, press the corresponding button on the control panel.
2. Refer to the user manual for detailed instructions on specific operations.
3. Take note of any safety precautions mentioned in the Vmanual.

### Step 4: Maintenance

1. Clean the product regularly with a soft cloth.
2. Avoid using abrasive cleaners or solvents that may damage the product.
3. Keep the product away from water or other liquids.

### FAQ

- **Q: Can this product be used with different power supplies?**
  - **A:** Yes, the product is compatible with universal power supplies.
- **Q: How do I reset the product?**
  - **A:** To reset the product, press and hold the reset button for 10 seconds.
- **Q: Is the product suitable for outdoor use?**
  - **A:** The product is not designed for outdoor use. It should be kept in a dry and indoor environment.

### ASSEMBLY

**NOTE:** Fan blades come packed separately from the main power unit. Assembly is required. Insert each blade into the tab until it clicks in, as shown on right. The blades can only be inserted one way.

### INSTALLATION No tools required.

Turn the power OFF using the wall light switch for th before installing the unit.

### EQUIPPED WITH SAFETY OFF FEATURE

If the blades come in contact with an object during operation, the fan will stop. To restart:

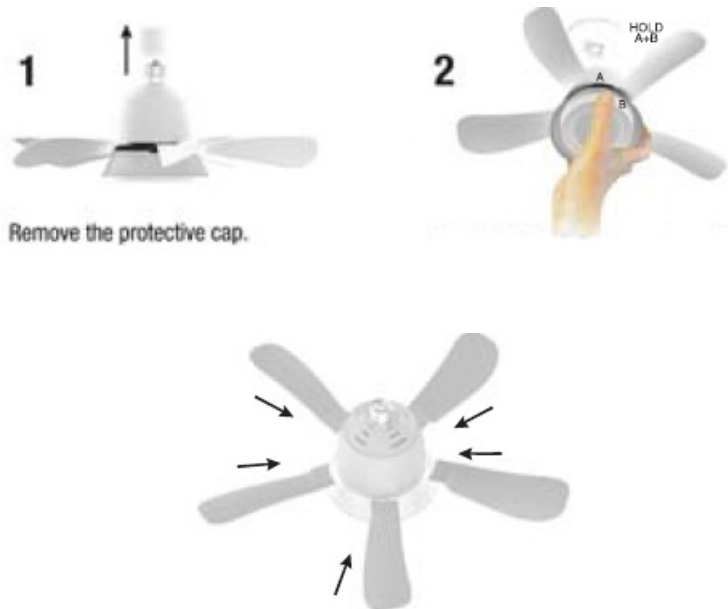
**Option A:** Just wait 4-5 seconds, the fan will resume automaticly

**Option B.** Turn the power OFF using the wall light switch for that socket.

Wait for 4-5 seconds then switch it back on. Last used light setting will resume

Then using the remote control.

**Option C:** Just wait 4-5 sends before using the remote control again.

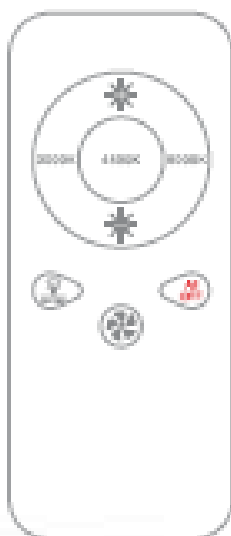


If needed, use the socket extender. Screw it in clockwise. Do not overtighten, but make sure the fan is fully secured. Then, follow step 2 to install the Socket Fanlight unit.

While holding the unit as shown above (holding part A and part B at the same time), twist the Socket Fanlight clockwise to install it. Do not overtighten, but make sure the fan is fully secured.

1. Turn the Socket Fanlight ON using the wall light switch for that socket. The light will turn on High setting, fan will be off. To turn on the fan or change the light settings use the included remote. Refer to "USING THE REMOTE" section on next page. Use the wall light switch to turn the unit OFF (fan and light)

## USING THE REMOTE



**Remote working distance:** up to 40 feet(12m)

✱ Each short press to increase brightness by 20%. successively increase to 40%-60%-80%-100%

✱ Each short press to reduce brightness by 20%., successively reduced to 100%-80%-60%-40%-20%

**3000K** 3000K Emitting Color

**4500K** 4500K Emitting Color

**6000K** 6000K Emitting Color



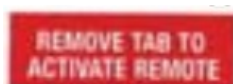
Fan and lamp main off switch, turn off light and fan together



Light switch button.turn on/off light.short press,turn on default



3000K/50% brightness



## IN CASE THE REMOTE IS MISPLACED

Socket Fanlight can be operated via wall light switch (Memory or Default Setting) in case the remote is misplaced or lost.

MEMORY FEATURE (wall light switch only):

1. If you turn the unit off via a wall light switch, the last Light setting will be saved. For example: if the Light was set on High brightness, the same setting will resume when you turn the unit back on using the wall light switch.
2. Once you turn the wall light switch back on, the default setting will briefly engage, followed by the last light setting.
  - **NOTE:** If you turned off both, the Light and Fan via remote, when the wall light switch is turned back on, the default setting will be used.

**THE LEDS ARE NON REPLACEABLE.**

**FOR INDOOR USE ONLY SPECIFICATIONS**

## SPECIFICATIONS



- 100-265VAC,25W
- 1000 Lumens
- 54 High Intensity LED Bulbs

- Suitable for E26/E27 Light socket base

## IMPORTANT SAFEGUARDS

- KEEP FAN OUT OF REACH OF CHILDREN.
- **WARNING:** TO REDUCE THE RISK OF PERSONAL INJURY, DO NOT BEND THE BLADE BRACKETS WHEN INSTALLING THE BRACKETS, BALANCING THE BLADES, OR CLEANING THE UNIT.
- DO NOT INSERT FOREIGN OBJECTS IN BETWEEN ROTATING FAN BLADES.
- **CAUTION:** TO REDUCE THE RISK OF INJURY TO PERSONS, INSTALL UNIT AT LEAST 8 FEET (2.43 M) ABOVE THE FLOOR.
- CONSULT A QUALIFIED ELECTRICIAN TO ENSURE CORRECT BRANCH CIRCUIT CONDUCTOR.
- THIS PRODUCT MUST BE INSTALLED IN ACCORDANCE WITH THE APPLICABLE INSTALLATION CODE BY A PERSON FAMILIAR WITH THE CONSTRUCTION AND OPERATION OF THE PRODUCT AND THE HAZARDS INVOLVED.
- THIS DEVICE CAN ONLY BE INSTALLED ON STATIONARY LIGHT SOCKET, CANNOT INSTALL ON ANY NON STATIONARY OR LOOSE SETTING LIGHT SOCKET.
- TO REDUCE THE RISK OF ELECTRIC SHOCK, THIS UNIT MUST BE INSTALLED WITH AN ISOLATING WALL CONTROL/SWITCH.
- DUE TO SOCKET FANLIGHT HIGH INTENSITY LED BULBS, DO NOT STARE DIRECTLY INTO THE LED LIGH
- RISK OF ELECTRIC SHOCK – USE IN DRY LOCATION ONLY.
- SWITCH OFF THE POWER BEFORE INSTALLING THE UNIT.
- NEVER PLACE ANYTHING OVER THE FAN OR INTO THE UNIT BLADES WHEN IT'S RUNNING.
- USE IN OPEN LUMINAIRE ONLY.
- DO NOT USE WITH DIMMERS.
- DO NOT PLACE OBJECTS NEAR THE UNIT.
- ADDED WEIGHT OF THE DEVICE MAY CAUSE INSTABILITY OF A FREE STANDING PORTABLE LUMINAIRE
- THIS DEVICE IS NOT INTENDED FOR USE WITH EMERGENCY EXITS.
- DO NOT OPERATE ANY APPLIANCE AFTER IT MALFUNCTIONS, OR IS DROPPED, OR DAMAGED IN ANY MANNER. RETURN APPLIANCE TO THE NEAREST AUTHORIZED SERVICE FACILITY FOR EXAMINATION, REPAIR OR ELECTRICAL OR MECHANICAL ADJUSTMENT.
- UNIT SHOULD BE TURNED OFF WHEN NOT IN USE OR DURING CLEANING. FAN HAS TO COME TO A COMPLETE STOP BEFORE HANDLING I.

## FCC STATEMENT

This device complies with part 15 of the FOC Rules. Operation is subject to the following two conditions: (1) This device may not cause harmful interference, and (2) this device must accept any interference received, including interference that may cause undesired operation.

**WARNING:** Changes or modifications to this unit not expressly approved by the party responsible for compliance could void the user's authority to operate the equipment.

**NOTE:** This equipment has been tested and found to comply with the limits for a Class B digital device, pursuant to Part 15 of the FCC Rules. These limits are designed to provide reasonable protection against harmful interference in a residential installation. This equipment generates, uses and can radiate radio frequency energy

and, if not installed and used in accordance with the instructions, may cause harmful interference to radio communications. However, there is no guarantee that interference will not occur in a particular installation. If this equipment does cause harmful interference to radio or television reception, which can be determined by turning the equipment off and on, the user is encouraged to try to correct the interference by one or more of the following measures:

- Reorient or relocate the receiving antenna.
- Increase the separation between the equipment and receiver.
- Connect the equipment into an outlet on a circuit different from that to which the receiver is connected.
- Consult the dealer or an experienced radio/TV technician for help.

**NOTE:** This device and its antenna(s) must not be co-located or operation in conjunction with any other antenna or transmitter  
The device has been evaluated to meet general RF exposure requirement. The device can be used in portable exposure condition without restriction.

---

## Documents / Resources

	<p><a href="#">BELL HOWELL FS400-A1 Socket LED Fan Light</a> [pdf] Instruction Manual FS400-A1, 2BEHX-FS400-A1, 2BEHXFS400A1, FS400-A1 Socket LED Fan Light, Socket LED Fan Light, LED Fan Light, Fan Light, Light</p>
---	--

## References

- [User Manual](#)