



# BELKIN F1DD102U OmniView SOHO USB KVM Switch User Guide

[Home](#) » [belkin](#) » BELKIN F1DD102U OmniView SOHO USB KVM Switch User Guide 

## BELKIN F1DD102U OmniView SOHO USB KVM Switch



### Contents

- [1 IMPORTANT!](#)
- [2 OTHER MODEL](#)
- [3 SOHO USB KVM Firmware Update Instructions](#)
- [4 SOHO USB KVM Firmware Update Instructions](#)
- [5 Documents / Resources](#)
  - [5.1 References](#)
- [6 Related Posts](#)

## IMPORTANT!

This Guide refers to the following Products:

### OTHER MODEL

- SOHO DVI KVMs F1DD102U



- SOHO Dual-Head KVMs  
F1DH102U  
F1DH104U



- SOHO Pure USB KVMs  
F1DS102U  
F1DS104U



## SOHO USB KVM Firmware Update Instructions

Please read the following carefully;

### Synopsis:

This guide will assist you in updating the firmware of your Belkin OmniView SOHO USB KVM Switch. Please be advised that firmware updates tend to be to resolve specific issues and if there is any doubt if the firmware will resolve your issue you should check with Technical Support.

### Requirements:

To perform the Firmware Upgrade successfully you will need the following equipment;

- SOHO USB based KVM
- 9 V DC 1000mA KVM Power Supply (supplied)
- RJ45-DB25 Flash Update Cable (supplied)
- PC with Win 98, ME,2000 or XP and Parallel Port
- Firmware Update File
- NTPDA Update

You will also need to ensure that any Firewall or Anti-Virus Software is disabled on the Computer from which you will be upgrading the Firmware.

## SOHO USB KVM Firmware Update Instructions

### Step 1

Before proceeding with the Firmware Update you will need to ensure that the Computer being used for the update process is ready.

If you are running Windows 2000 or XP you will need to install an NT Direct Port Access Update prior to running the Flash Update. The NTPDA.zip file Update Utility can be downloaded from the same location as the Firmware Update files. Once downloaded, the file should be unzipped and the 'Setup.exe' file run in order to install.



# SETUP.EXE

## Setup Launcher ( SETUP.EXE)

## InstallShield Corporation, Inc.

**You will be prompted to reboot your system to complete the process.**

### Step 2

The KVM will need to be powered in order to perform the Flash Update process. As the KVM was supplied with a Power Supply Unit (9V DC 1000mA) we recommend this alone be connected to the KVM for the duration of the process and any connected computers removed.

### Step 3

Plug the supplied Firmware Update Cable in to the (DB25) Parallel Port of a stand-alone Computer (i.e. one that is not currently connected to and controlled by the KVM) and connect the other end of the Cable into the (RJ45)

Firmware Upgrade Port of the KVM.



#### Step 4

The KVM only has one USB Chipset to upgrade so there are no Dip Switches to set.

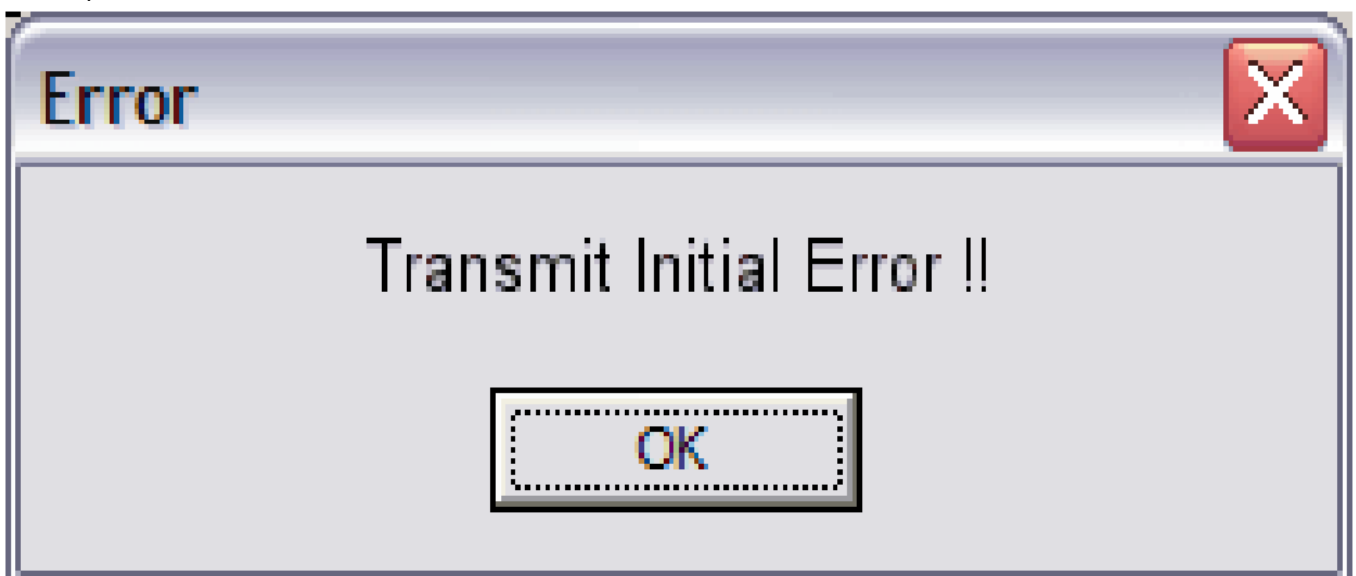
The KVM can now be flash upgraded. Double click the Icon of the Firmware Update File that you downloaded.



F1DD\_H\_S104U.exe  
KVM MFC Application  
BELKIN Components

Once open, click on the  button in the KVM Firmware Update Window.

Should you receive the following Error Message then it means that the data cannot be sent to the KVM in order to Flash Update it.

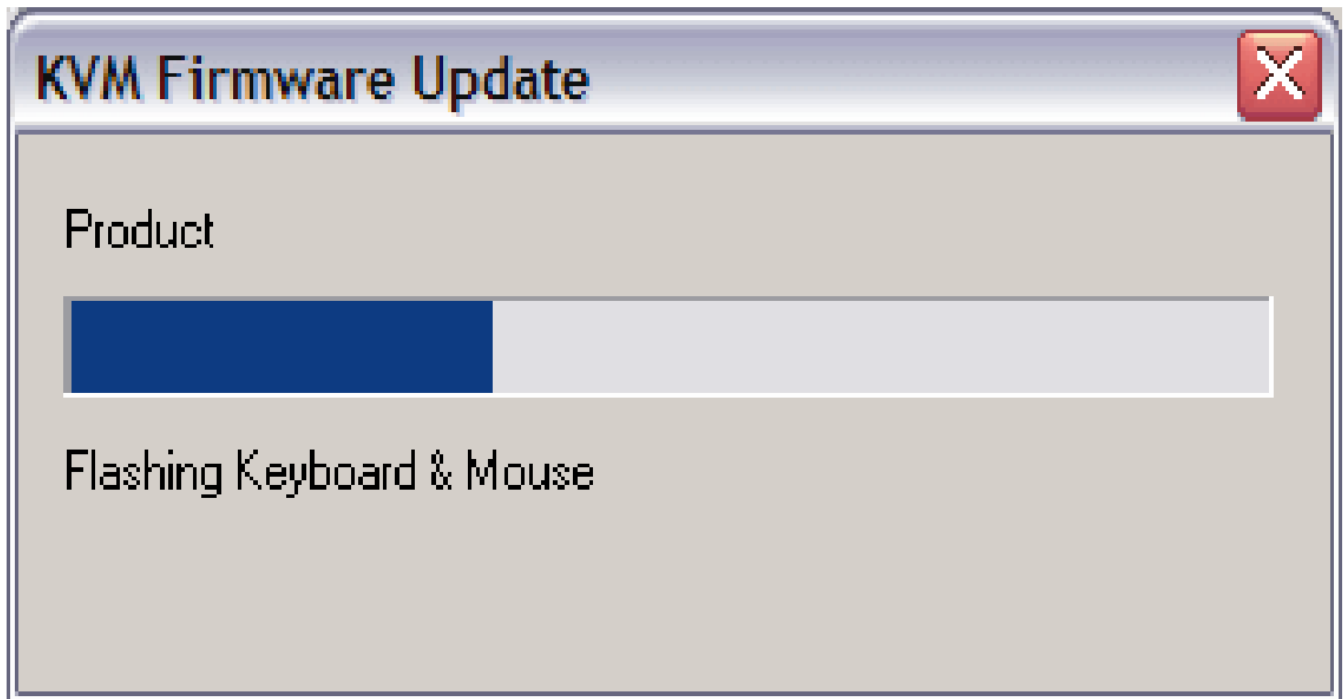


To resolve this click 'OK' and 'OK' again. Unplug Power from the KVM, then unplug the Flash Update Cable. Wait

10 seconds. Now plug the Flash Update Cable in first, followed by the Power Cable (or KVM Cable Kit). Repeat Step 4.

### Step 5

Providing the Flash Upgrade is being performed successfully, you should see a Window with a Progress Bar similar to that shown below.



Once the Firmware Upgrade has been successfully completed an extra Window will appear with a message to this effect. Simply close this Window.

### Step 6

Once the Firmware Upgrade has been successfully completed an extra Window will appear with a message to this effect. Simply close this Window.

Next, unplug both the Flash Update Cable from both KVM and the Computer, followed by the Power Cable to the KVM.

The KVM can now be powered back on by connecting the Power cable back to the Power Jack (or KVM cable kit to one of the Computers and KVM).

The Unit should beep three times to indicate power has been added. You should be able to switch between ports using the Port Selector buttons on the front of the KVM and see a flashing LED on each Port. Should this not be the case the KVM should be re-flashed using the original firmware.

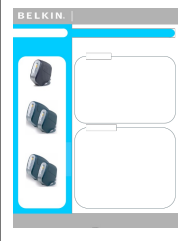
Once successfully powered any Computers can be re-connected to the KVM.

### N.B.

Should the unit emit a persistent beep after the Flash Update process then it is indicating that the Firmware has been in some way corrupted. The unit should be reflashed using an original Firmware.

---

## Documents / Resources

	<p><a href="#">BELKIN F1DD102U OmniView SOHO USB KVM Switch</a> [pdf] User Guide F1DD102U OmniView SOHO USB KVM Switch, F1DD102U, OmniView SOHO USB KVM Switch, SOHO USB KVM Switch, USB KVM Switch, KVM Switch, Switch</p>
---	---

## References

- [User Manual](#)

[Manuals+](#), [Privacy Policy](#)

This website is an independent publication and is neither affiliated with nor endorsed by any of the trademark owners. The "Bluetooth®" word mark and logos are registered trademarks owned by Bluetooth SIG, Inc. The "Wi-Fi®" word mark and logos are registered trademarks owned by the Wi-Fi Alliance. Any use of these marks on this website does not imply any affiliation with or endorsement.