

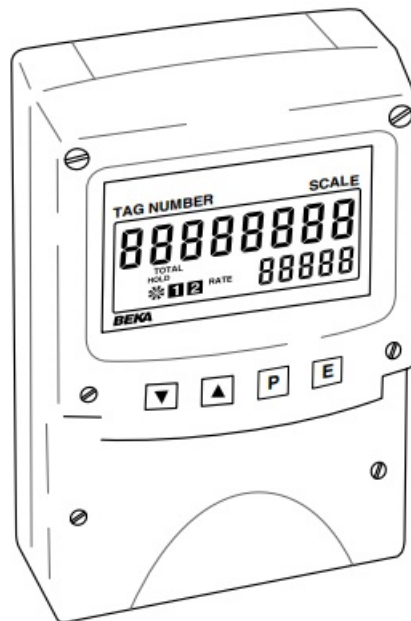


BEKA BA554E Loop Powered Rate Totaliser User Manual

[Home](#) » [BEKA](#) » BEKA BA554E Loop Powered Rate Totaliser User Manual 

BEKA

Abbreviated Instructions for
BA554E general purpose field
mounting loop powered rate totaliser



Issue 2
10th March 2014

Contents

1 DESCRIPTION

2 INSTALLATION

3 OPERATION

4 CONFIGURATION

5 Documents / Resources

5.1 References

6 Related Posts

DESCRIPTION

The BA554E is a field mounting, general purpose, 4/20mA rate totaliser primarily intended for use with flowmeters. It simultaneously displays the rate of flow (4/20mA current) and the total flow in engineering units on separate displays. It is loop powered but only introduces a 1.2V drop into the loop. This abbreviated instruction sheet is intended to assist with installation and commissioning, a comprehensive instruction manual describing system design and configuration is available from the BEKA sales office or may be downloaded from our website.

INSTALLATION

The BA554E rate totaliser has a robust IP66 glass reinforced polyester (GRP) enclosure incorporating an armoured glass window and stainless steel fittings. It is suitable for exterior mounting in most industrial environments.

It is surface mounting, but may be pipe mounted using one of the accessory kits.

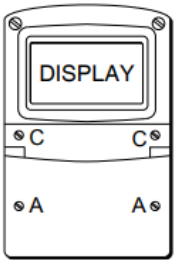
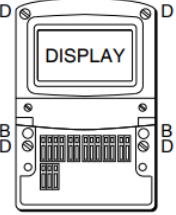
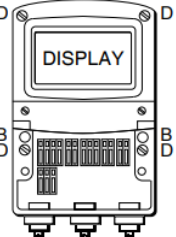
	Step 1 Remove the terminal cover by unscrewing the two 'A' screws
	Step 2 Secure the instrument to a flat surface with M6 screws through the two 'B' holes. Alternatively use a pipe mounting kit.
	Step 3 and 4 Remove the temporary hole plug and install appropriate IP rated cable gland or conduit fitting and terminate field wiring. Replace the terminal cover and tighten the two 'A' screws.

Fig 1 shows the installation procedure.

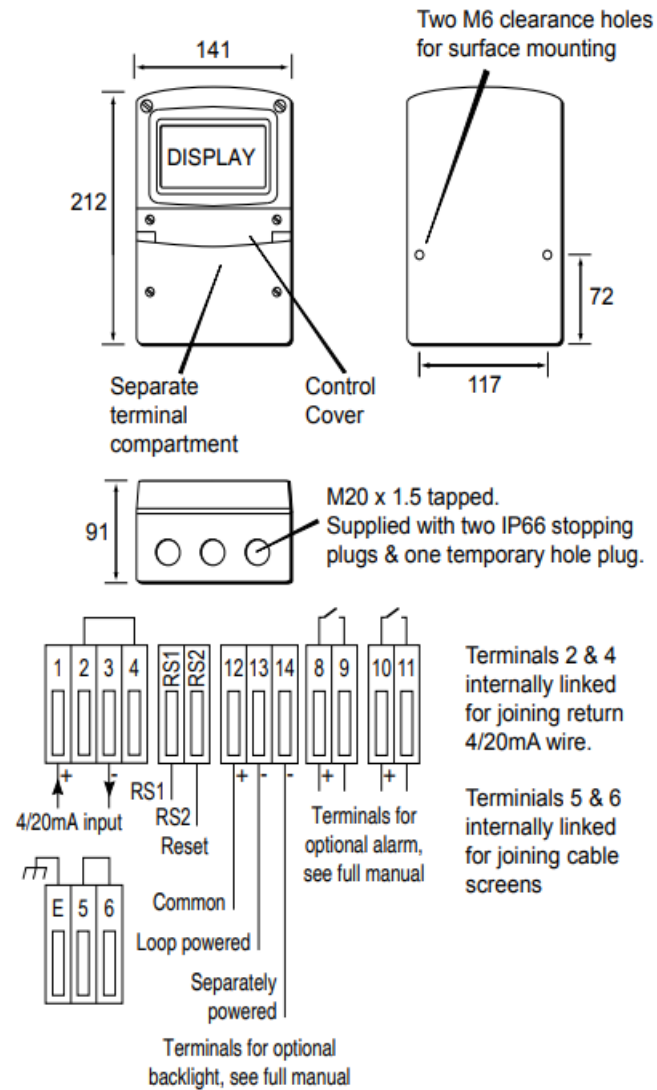


Fig 2 Dimensions and terminal connections

The rate totaliser's earth terminal is connected to the carbon loaded GRP enclosure. If this enclosure is not bolted to an earthed post or structure, the earth terminal should be connected to the plant potential equalising conductor. A bonding plate is provided to ensure electrical continuity between the three conduit / cable entries.

Terminals 8, 9, 10 & 11 are only fitted when the rate totaliser includes optional alarms. See full manual for details. Terminals 12, 13 & 14 are only fitted when the rate totaliser includes an optional backlight. See full manual for details.

EMC

The BA554E complies with the European EMC Directive 2004/108/EC. For specified immunity all wiring should be in screened twisted pairs, with the screens earthed in the safe area.

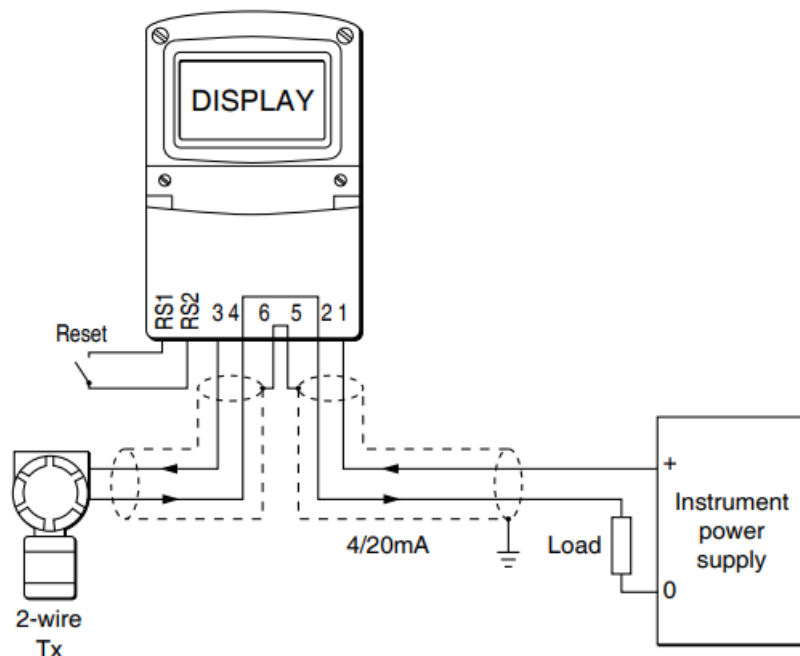


Fig 3 Typical measurement loop

Units of measurement & tag number

The BA554E has an escutcheon around the liquid crystal display which can be supplied printed with any units of measurement and tag information specified when the instrument was ordered. If no information was supplied a blank escutcheon will be fitted but legends may be added on-site via an embossed strip, dry transfer or a permanent

marker. Custom printed escutcheons are available from BEKA as an accessory which should be fitted on top of the blank escutcheon. Do not remove the blank escutcheon.

To gain access to the escutcheon remove the terminal cover by unscrewing the two 'A' screws which will reveal two concealed 'D' screws. If the instrument is fitted with an external keypad, also unscrew the two 'C' screws securing the keypad and un-plug the five way connector. Finally unscrew all four 'D' screws and carefully lift off the front of the instrument. Add the required legend to the escutcheon, or stick a new printed self-adhesive escutcheon on top of the existing escutcheon.

OPERATION

The BA554E is controlled and configured via four push buttons located behind the instrument control cover, or via an optional keypad on the outside of the control cover. In the display mode i.e. when the instrument is totalising, these push buttons have the following functions:

P Displays input current in mA or as a percentage of span. (configurable function) Modified when optional alarms are fitted.

▼ Shows rate display calibration at 4mA input

▲ Shows rate display calibration at 20mA input

E Shows time since instrument was powered or total display was reset.

E+▼ Grand total displays least significant 8 digits

E+▲ Grand total displays most significant 8 digits

▼+▲ Resets total display (configurable function)

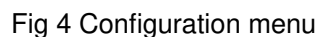
P+▼ Shows firmware version

P+▲ Optional alarm setpoint access

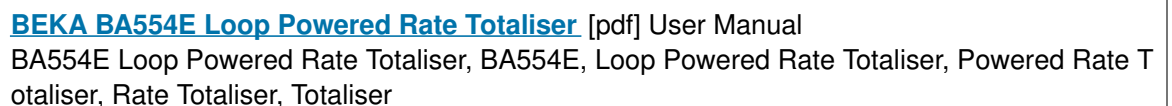
P+E Access to configuration menu

CONFIGURATION

Access to the configuration menu is obtained by pressing the P and E buttons simultaneously. If the totaliser security code is set to the default '0000' the first parameter 'FunC' will be displayed. If the totaliser is protected by a security code, 'CodE' will be displayed and the code must be entered to obtain access to the menu.



Documents / Resources



References

- [!\[\]\(2dc8cdc0c918df88cde61039ecf68682_img.jpg\) **BEKA associates Ltd.**](#)
- [!\[\]\(793119bf0d613bd9b598fb8668922511_img.jpg\) **BA554E 4/20mA Loop powered rate totaliser, General purpose**](#)

Manuals+.