


BEITONG KunPeng 20 Gaming
Controller



BEITONG KunPeng 20 Gaming Controller User Manual

[Home](#) » [BEITONG](#) » BEITONG KunPeng 20 Gaming Controller User Manual 

Contents

- 1 BEITONG KunPeng 20 Gaming Controller
- 2 Product Usage Instructions
- 3 Basic Control
- 4 Wireless Connection
- 5 Wired Connection
- 6 Bluetooth Connection
- 7 Switch
- 8 Andriod TV/Android Mapper
- 9 WIRELESS/BLUETOOTH MODE SWITCH
- 10 FAQ
- 11 PRODUCT SPECS
- 12 FC STATMENT
- 13 Customer Service
- 14 Documents / Resources
 - 14.1 References
- 15 Related Posts



BEITONG KunPeng 20 Gaming Controller



Specifications

- Product Name: BEITONG KunPeng 20 Gaming Controller
- Wireless Charging Touchpoint
- Back Button M1
- Switch Back Button M2
- Auto Power Off Feature
- Calibration Mode for Triggers and Sticks
- Calibration Mode for Motion Sensors

Product Usage Instructions

Basic Controls

Button	Function
HOME BUTTON	BACK+B (Long press for 3s)
HOME BUTTON	(Long press for 5s)
TURBO BUTTON	Short press to activate turbo mode for various buttons
POWER ON	RB+BACK+RS+HOME to power on the device

Wireless Connection to PC

1. Insert the receiver into the USB port.
2. Push Mode Switch to A and wait for a red blink indicating success.
3. Short press HOME button to power on. A successful connection is indicated by a short vibration and a red light for 7 seconds.
4. The gamepad will remember the last connected device and automatically connect next time it powers on.

Wired Connection to PC

1. Connect the PC and gamepad with a USB cable.
2. Short press HOME button while the gamepad is powered off to establish a connection (indicated by a short vibration).

Bluetooth Connection

1. Push Mode Switch to HOME.
2. Short press HOME button to power on.
3. On your PC, go to Settings -> Bluetooth and Other Devices -> Add a Bluetooth Device, then select XBOX WIRELESS CONTROLLER to connect.
4. A successful connection is indicated by a short vibration and a yellow light for 7 seconds.

Frequently Asked Questions (FAQ)

How do I calibrate the sticks and triggers?

To calibrate sticks and triggers, press BACK+START+RS while connected. Follow the on-screen instructions to complete the calibration process.

BEITONG KunPeng 20

Gaming Controller User Manual



Basic Control

BUTTON	FUNCTION
HOME BUTTON	SHORT PRESS TO POWER ON
BACK+B (LONG PRESS FOR 3S)	POWER OFF
HOME BUTTON (LONG PRESS FOR 5S)	FORCE PAIRING IN CURRENT MODE
SHORT PRESS TURBO BUTTON	TURN HANDLE LIGHT ON/OFF
TURBO+A/B/X/Y/LB/LT/RT/RB	TURN TURBO ON/OFF
POWER ON WITH RB+BACK+RS+HOME	CLEAR ALL PAIRING DATA
BACK+START+RS	CALIBRATION MODE FOR TRIGGERS AND STICKS
POWER ON WITH Y+X+HOME	CALIBRATION MODE FOR MOTION SENSORS

AUTO POWER OFF	Power off after 10 minutes (adjustable) of no inputs while connected.
AUTO POWER OFF (DC)	Power off after being disconnected with no user inputs for 2 minutes.
SWITCH PAIRED DEVICE	Long press HOME button for 5s will force the gamepad to reset the pairing in the current mode.
CALIBRATE STICKS TRIGGERS	While connected, press BACK+START+RS to enter the calibration mode. Once entered, the logo light will flash in a red-green-blue sequence. Rotate left and right sticks in full 360 degrees for 3 times, fully press down triggers for 3 times, then press BACK+START+RS again to finish the calibration. The gamepad will auto-reconnect after the calibration.
CALIBRATE MOTION SENSORS	While powered off, press Y+X+HOME to enter the calibration mode. Once entered, the logo light will stay yellow. Then put the gamepad on a flat surface for 5 seconds. Two flashes of red light indicate that the calibration is successful.

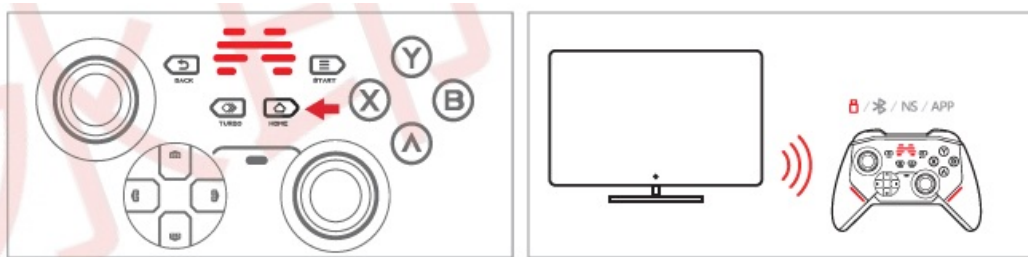
Wireless Connection

Wireless only enables while the gamepad is NOT connected through a cable.

1. Insert the receiver into the USB port. A red blink indicates success.
2. Push Mode Switch on the back to

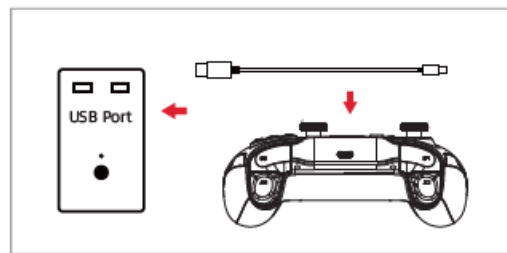


3. Short press HOME button to power on. If the connection is successful, the gamepad will respond with a short vibration and the light will stay red for 7 seconds.
4. After the first successful connection, the gamepad will remember the last connected device and connect automatically next time it powers on in mode by short pressing HOME button.




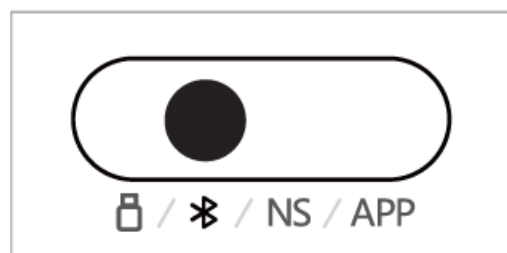
Wired Connection

1. In any Mode, connect the PC and the gamepad with a USB cable.
2. While the gamepad is powered off, short press HOME button to power on. A short vibration indicates that the connection is successful.




Bluetooth Connection

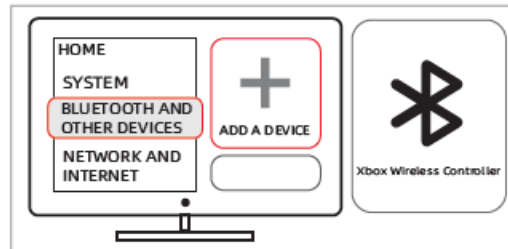
1. Push Mode Switch on the back to 



2. Short press HOME button to power on.
 - Then on your PC, go to Settings ->
 - Bluetooth and Other Devices ->
 - Add a Bluetooth Device, then select "XBOX WIRELESS CONTROLLER" to connect.
3. If the connection is successful, the gamepad will respond with a short vibration and the light will stay yellow for 7 seconds.

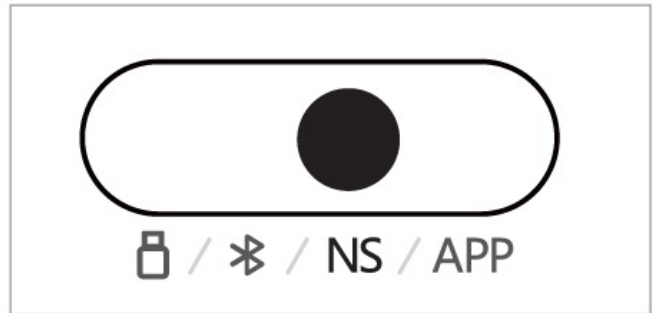


4. After the first successful connection, the gamepad will remember the last connected device and connect automatically next time it powers on in  mode by short pressing HOME button.

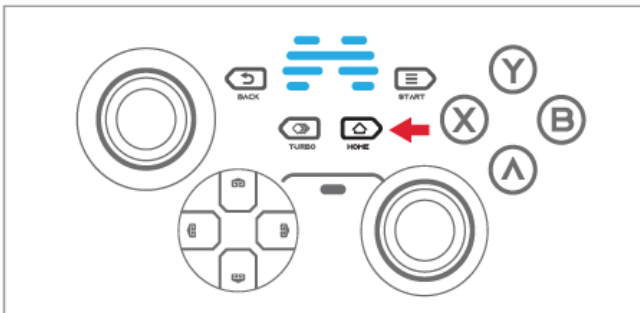


Switch

1. Start your Switch, on the HOME menu, select gamepad icon, then go to "Controllers" -> "Change Grip/Order"
2. While the gamepad is powered off, push Mode Switch on the back to NS.



3. Short press HOME button to power up the gamepad. The gamepad will connect automatically after a short time. If the connection is successful, the gamepad's light will stay blue for 7 seconds.
4. After the first successful connection, the gamepad will remember the last connected Switch and connect automatically next time it powers on in NS mode by short pressing HOME button.

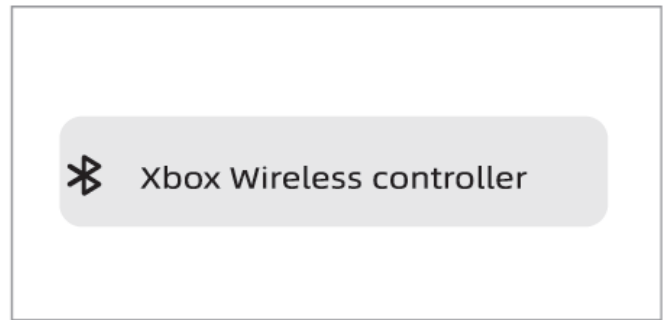
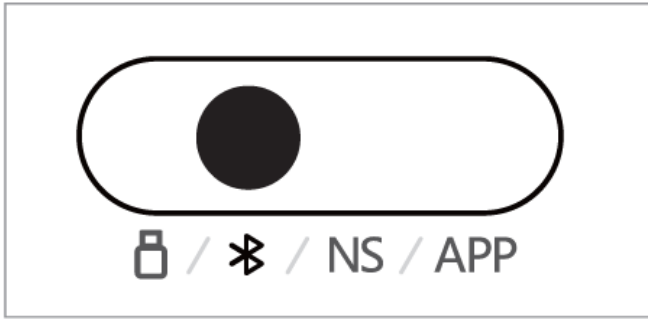



Switch Mapping Example

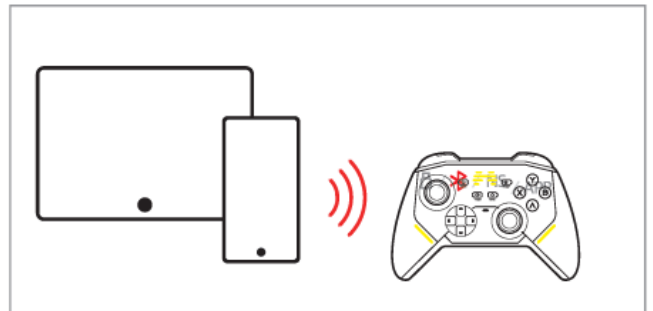
BUTTON	A	B	X	Y	BACK	START	SHORT PRESS TURBO+RS	LONG PRESS TURBO+RS	HOME	TURBO
SWITCH BUTTON	B	A	Y	X	-	+	SCREENSHOT	RECORD	HOME	TURBO


Phone/Tablet

*This gamepad supports XInput and is compatible with any games that have native XInput support.



1. Push Mode Switch on the back to 
2. Short press HOME button to power on. Open your device's Bluetooth discovery menu and select "XBOX WIRELESS CONTROLLER" from the device list.



3. If the connection is successful, the gamepad will respond with a short vibration and the light will stay green for 7 seconds.
4. After the first successful connection, the gamepad will remember the last connected device and connect automatically next time it powers on in  mode by short pressing HOME button.

Andriod TV/Android Mapper

1. Push Mode Switch on the back to APP
2. Short press HOME button to power on. Open your device's Bluetooth discovery menu and select "BTP-KP20 BFM" from the device list.



3. If the connection is successful, the gamepad will respond with a short vibration and the light will stay green for 7 seconds.
4. After the first successful connection, the gamepad will remember the last connected device and connect automatically next time it powers on in APP mode by short pressing HOME button.



WIRELESS/BLUETOOTH MODE SWITCH

This gamepad can switch among 4 wireless modes: Receiver, XInput Bluetooth, Switch Bluetooth, and BFM Bluetooth.

You may force pairing in current mode by long pressing HOME button for 5 seconds. The gamepad will attempt reconnecting to its previous connected device on each mode on mode switch.

Switch	Mode	Light	Reconnect	Force Pairing	SUCCESSFUL CONNECTION
	Receiver Mode	Red	Normal Red Flash	Fast Red Flash	Light stays red for 7 seconds then changes to user-defined light
	XInput Mode	Yellow	Normal Yellow Flash	Fast Yellow Flash	Light stays Yellow for 7 seconds then changes to user-defined light
NS	switch Mode	Blue	Normal Blue Flash	Fast Blue Flash	Light stays Blue for 7 seconds then changes to user-defined light
APP	bfm Mode	Green	Normal Green Flash	Fast Green Flash	Light stays Green for 7 seconds then changes to user-defined light

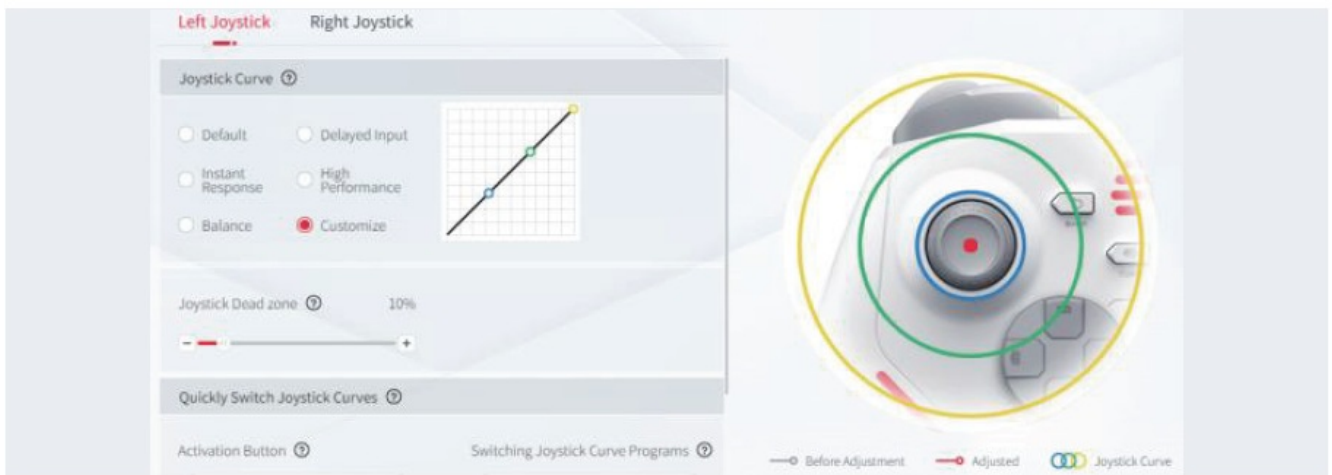
CHARGING GUIDE

BATTERY STATUS	LIGHT INDICATION
Less than 20%	Fast flashing user-defined light
Charging	User-defined light fades in and out
Charging complete	When powered off: user-defined light stays on for 7 seconds then off When powered on: changes to user-defined light
* By default, charging light is red. The light's color can be customized in BEITONG gamepad assistant.	

MORE SMART CUSTOMIZATION THROUGH BEITONG GAMEPAD ASSISTANT

Go to BEITONG's official website www.betop-cn.com/en and download BEITONG Gamepad Assistant for more customization options.

1. STICK ADJUSTMENT. ADJUST SENSITIVITY ACCORDINGLY BASED ON GAME GENRES



2. CUSTOMIZABLE LIGHT



3. CUSTOM MAPPING & MACROS



FAQ

Q: MY GAMEPAD IS NOT CONNECTING WIRELESSLY.

Usually it's caused by jammed signals or insufficient battery. Please try the following:

1. Make sure that the gamepad is sufficiently charged. Try reconnecting after charging it for more than 1 hour.
2. Try a different USB port on the same device. A USB 3.0 port is recommended.
3. If nothing works, please contact our online technical support. Support Email: beitong-oversea@betop-cn.com

Q: WHAT KIND OF CHARGER SHOULD I USE?

The standard charger is 5V 1A-2A.

Q: HOW DO I UPGRADE FIRMWARE?

Please install BEITONG Gamepad Assistant and follow the instructions provided by the software.

Q: THE ANALOG STICK IS STUCK IN A DIRECTION / DCS NOT CENTER PROPERLY?

1. Try forcing it back to the center and pressing down the stick slightly harder, which should re-center itself.
2. If 1) did not help, please contact customer support through beitong-oversea@betop-cn.com

PRODUCT SPECS

PRODUCT NAME	BEITONG KunPeng 20 Intelligent Gaming Controller
PRODUCT MODEL	BTP-KP20
PRODUCT DIMENSIONS	156x107x67mm
PRODUCT WEIGHT	≈235g
COMPATIBILITY	PC, Nintendo® Switch, Smartphone, Android TV, Smart Projectors, etc. TV/TV Boxes that support Android 9.0 and above. PC/Laptops that support Windows 7 and above. Android phones that support Android 9.0 and above, iPhones that support iOS 13.4 and above.
CONNECTION CAPABILITY	Wired, Wireless, Bluetooth
BATTERY CAPACITY	600mAh
RANGE	Wired: 1.5 meters, Wireless: less than 10 meters

FCC STATMENT

This device complies with part 15 of the FCC Rules. Operation is subject to the following two conditions:

1. This device may not cause harmful interference, and
2. This device must accept any interference received, including interference that may cause undesired operation.

Note: This equipment has been tested and found to comply with the limits for a Class C digital device, pursuant to part 15 of the FCC Rules. These limits are designed to provide reasonable protection against harmful interference in a residential installation. This equipment generates, uses and can radiate radio frequency energy and, if not installed and used in accordance with the instructions, may cause harmful interference to radio communications. However, there is no guarantee that interference will not occur in a particular installation. If this equipment does cause harmful interference to radio or television reception, which can be determined by turning the equipment off and on, the user is encouraged to try to correct the interference by one or more of the following measures:

- Reorient or relocate the receiving antenna.
- Increase the separation between the equipment and receiver.
Connect the equipment into an outlet on a circuit different from that to which the receiver is connected.
- Consult the dealer or an experienced radio/TV technician for help. The equipment complies with FCC Radiation exposure limit set forth for uncontrolled environment.

Warning: Changes or modifications to this unit not expressly approved by the party responsible for compliance could void the user's authority to operate the equipment.

This equipment has been tested against the listed standards and found to comply with the requirements of EMC Directive 2014/30/EU, LVD Directive 2014/35/EU, and RF Directive 2014/53/EU. The CE marking can be used to certify that a product complies with European Union (EU) health, safety, and environmental requirements.



■ This product, its battery, or the packaging may bear this symbol, indicating that this product and any contained batteries must not be disposed of with your household waste. Instead, you are responsible for handing them over to applicable collection points for the recycling of batteries and electrical electronic equipment. This separate collection and recycling will help protect natural resources and prevent potential negative consequences for human health and the environment due to harmful substances that may be present in batteries and electrical electronic devices, which could arise from improper disposal. For more information on where to dispose of batteries and electronic waste, please contact your local city/municipal office, your household waste disposal service, or the store where you purchased this product. For more information about the disposal of electrical electronic equipment and waste batteries, please contact beitong-oversea@betop-cn.com.

Customer Service

Dear Customer,

Thank you for choosing BEITONG gaming peripheral product. We aim to provide every gamer a better gaming experience. To submit a warranty claim, please include the following information in your email: a. Vendor Information b. Buyer ID c. Order Number d. Product Model Please describe the problems you're having and how we can be of assistance:

What problems are you having?

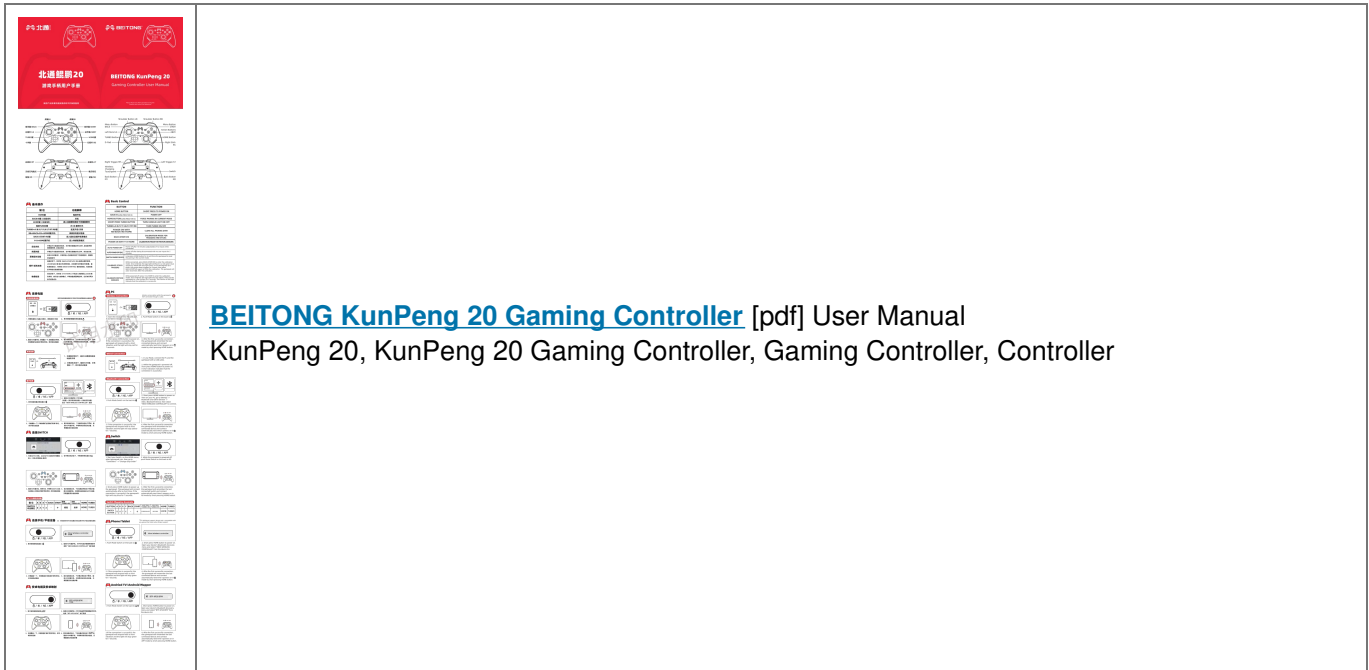
- Faulty control
- Exterior damage
- Incompatible with my device
- Incompatible with my game
- Others

How would you like to proceed?

- Replace
- Repair
- Return
- Others Support Email: beitong-oversea@betop-cn.com

Your feedback is highly appreciated and will help us to improve our product. Please tell us your thoughts on our product through our support email. Customers who provided valuable feedback may be eligible for free tech demos from us in the future. Sincerely,
BEITONG Customer Service Team

Documents / Resources



[BEITONG KunPeng 20 Gaming Controller](#) [pdf] User Manual
KunPeng 20, KunPeng 20 Gaming Controller, Gaming Controller, Controller

References

- [cn.com](#)
- [User Manual](#)

[Manuals+](#), [Privacy Policy](#)

This website is an independent publication and is neither affiliated with nor endorsed by any of the trademark owners. The "Bluetooth®" word mark and logos are registered trademarks owned by Bluetooth SIG, Inc. The "Wi-Fi®" word mark and logos are registered trademarks owned by the Wi-Fi Alliance. Any use of these marks on this website does not imply any affiliation with or endorsement.