



BEITONG BTP-A1T2 Wireless Gamepad Game Controller User Manual

[Home](#) » [BEITONG](#) » BEITONG BTP-A1T2 Wireless Gamepad Game Controller User Manual 

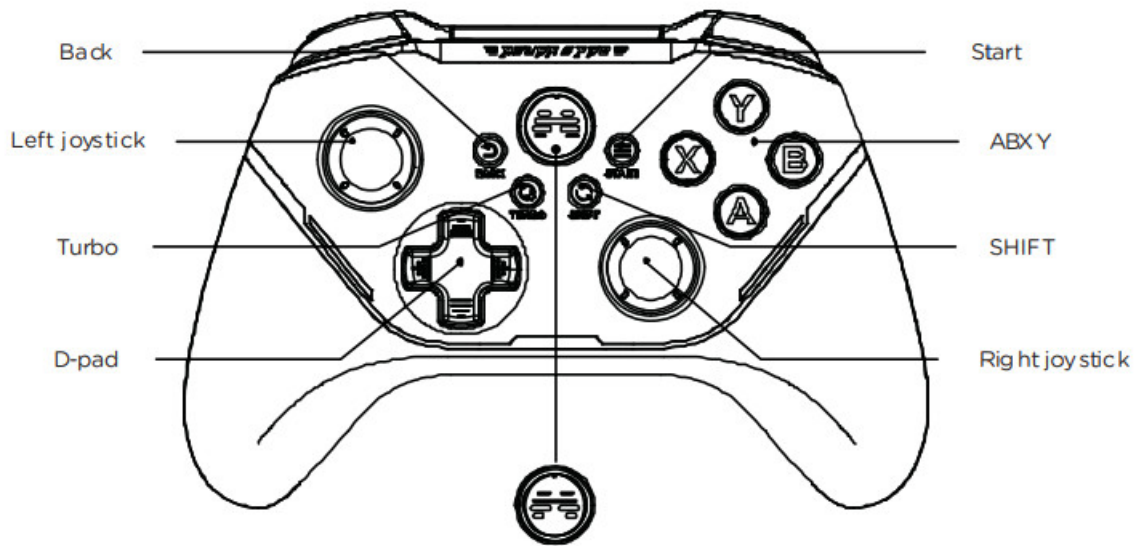


ASURA 2PRO WIRELESS User Manual

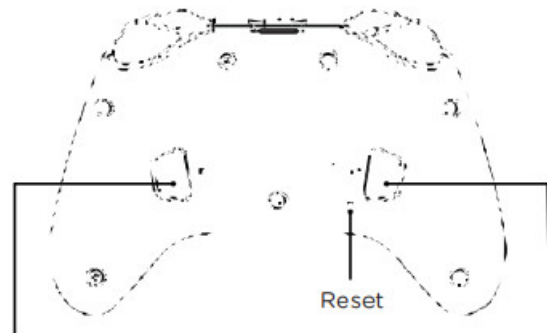
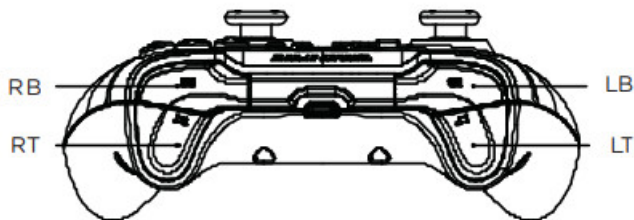
Contents

- [1 KEYS INTRODUCTION](#)
- [2 OTHER INSTRUCTION](#)
- [3 CONNECTION TUTORIAL](#)
- [4 CONTROLLER FUNCTION CONFIGURATION](#)
- [5 CUSTOMER SERVICE](#)
- [6 Documents / Resources](#)
 - [6.1 References](#)

KEYS INTRODUCTION



**BEITONG
(HOME Button)**

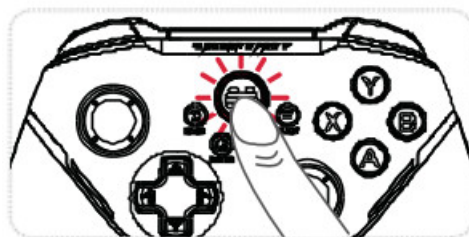


OTHER INSTRUCTION

Power ON/OFF procedure

Power ON:

Using the receiver to connect the device, short press the BEITONG Logo (HOME Button) to turn game controller on.



Power OFF:

1. Press and hold the BACK button + B button for about 3 seconds, the game controller will be turned off.



2. When the game controller is connected, without any operation for 10 minutes, the game controller will automatically shut down.

3. When the game controller is not connected, without any operation for 120 seconds, the game controller will automatically shut down.
4. When the power cannot support the normal use of the game controller, it will be power-drove power is low.

Turbo Button last ructions

Press a nd hold the Turbo button in t he power-on state, and then press any button to set the Turbo function, repeat this ope ration to cancel the Tur bifunction.



Status Description

When the controller is connected normally, the light shows white.

No operation for one minute, the light will enter into the sleeping mode.

Perform a operation on the controller, the light will be turned on.

CONNECTION TUTORIAL

Connect to computer

Wireless Connection:

Lnsert the wire le ss receiver into the USB inter face of the computer, and press t he BEITONG Logo (HOME Button) to turn game controller on. The connection i s completed when the game controller vibrates and the indicator light is on.



Wired Connection:

Use USB c ab le to connect the game controller and computer together, and then pressit he BEITONG Logo

(HOME Button) to turn game controller on. The connection is completed when the game controller vibrates and the indicator light is on.



Connect to T V

Wireless Connection:

Insert the wireless receiver into the USB interface of the TV, and press the BEITONG Logo (HOME Button) to turn game controller on. The connection is completed when the game controller vibrates and the indicator light is on.



*For a more stable connection during gaming, it is recommended to use an extension cable to connect the TV and wireless receiver.

Wired Connection:

Use USB cable to connect the game controller and TV together, and then press the BEITONG Logo (HOME Button) to turn game controller on. The connection is completed when the game controller vibrates and the indicator light is on.

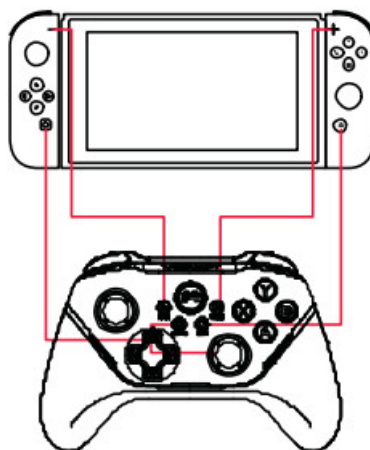


Connect to Switch

*Extra OTG adapter is needed, not included

1. Press and hold the LB + HOME button (BEITONG) in the power off state until the indicator light starts Multi-color cycling and then release it.
2. Take out the OTG cable and connect one end to the Switch and the other end to the controller/receiver.
3. Connection is successful when controller vibrates, and the indicator light is normal on.

Note : Need to turn on the [Pro Controller Wired Connection of Switch.



The corresponding NS keys of the controller are as follows:

BACK = - TURBO+RS = Screen shot

SHIFT = HOME Button

START = + *Short Press Screenshot

*Short Press Back to Desktop

*Long Press Screen Recording

*Long Press Menu Options

Connect to Tesla

Insert the wireless receiver/ USB Cable into the USB port of Tesla , press the BEITONG Logo (HOME Button) to turn Controller on and then long press the BEITONG Logo (HOME Button) again until it's recognized. The connection is completed when the Controller vibrates and the indicator light is on.

Model of Tesla	USB Port and C Port of Armrest Box	USB port of the passenger seat's glove box
Model 3 & Purchased after Nov.7, 2021	Not support	1. Support playing games with a single gamepad 2. Use extended hub to support dual gamers mode
Model 3 & Y purchased before Nov.7,2021, models', model	All USB ports support gamepads	

“BEITONG GAMEPAD ASSISTANT” SOFTWARE CONFIGURATION

Download and install the software -BEITONG Gamepad Assistant

1. Download the software [BEITONG Gamepad Assistant] from BEITONG official website: <https://www.betop-cn.com/en/#/down>



NOTE: About the assistant software it supports personalized function setting/key test/firmware upgrade. It's

re commended to download according to gamer's needs, but do not affect basic use of the controller without downloading

2. Use USB cable to connect the game controller and compute rote *In order to use the BEITONG Gamepad Assistant normally, the game controller must be connected to the computer with USB cable.

3. Run the software BEI TONG Gamepad Assistant] to set up the controller function

To avoid some new functions cannot be applied to the controller, if reminded to update the firmware, be sure to click "Confirm".

If the firmware upgrade fails due to factors such as signal disconnection, disconnection, and poor contact, please unplug the USB cable and then re-plug again to resume the firmware upgrade.

CONTROLLER FUNCTION CONFIGURATION

Customizable Buttons

1. After entering the Assistant, click any button value to enter the button value modification interface.
2. In this interface, you can modify the button value according to your needs. click the "Restore Default" button, you can cancel all key modification operations and return to the default state.

Vibration Customization

1. Click the "Default (Setting)" button in the main interface to enter the advanced settings interface.
2. Drag the "Vibration" slider in the "Basic" tab interface to adjust the vibration intensity. The vibration motors on the left and right sides each have five gears that can be adjusted

TURBO Button Frequency Adjustment

1. Click the "Default (Setting)" button in the main interface to enter the advanced settings interface.
2. Manually adjust the number in the "Turbo" Button function in the "Button" tab to change the Turbo frequency. The default frequency of the Turbo button is 10 times/second, and the maximum frequency is 30 times/second.

Adjust the Sensitivity of the Joystick

1. Click the "Default (Setting)" button in the main interface to enter the advanced settings interface.
2. In the "Joystick" tab, the sensitivity of the left and right joysticks of the controller can be individually set.

Button Macro Function

1. BEI TONG ASURA 2PRO supports custom macro settings for LB/RB, M1/M2 back buttons.
2. Click the "Default (Setting)" button in the main interface to enter the advanced settings interface. click the "Default" button of any key of LB/RB, M1/M2 in the "Button" tab enter into the next interface.
3. On the next interface, click the "Default" button in the upper right corner, then click to select "Set Macro" in the drop-down menu.
4. Press the desired button combination in the controller to form a macro command, and then click "Save" to

complete the button mapping.

Custom Sleep Time of the Controller

1. Click the "Default (Setting)" button in the main interface to enter the advanced settings interface.
2. In the "Function" tab, the sensitivity can be adjusted, also canceled rate the joystick and trigger.

Indicator Light Adjustment

1. Click the "Default (Setting)" button in the main interface to enter the advanced settings interface.
2. The "Light" adjustment settings of the "Basic" tab can modify the color, brightness, frequency and work type of the controller's indicator lights as needed.

CUSTOMER SERVICE

Dear customer,

Thanks for using BEITONG gaming peripheral products.

We focus on providing gamers with a better gaming experience, please provide the information through your email for customer service:

- a. Purchasing Channel
- b. Buyer ID
- c. Order Number
- d. Product Model

Please provide the below information for us according to the product situation:

1. Please provide service reason
 - a. Function is not good
 - b. Bad appearance
 - c. Can not use in my device
 - d. Can not play the game I want to play
 - e. Other
2. Please provide the service you need
 - a. Replacement
 - b. Repairing
 - c. Return
 - d. Other

Customer service contact: beitong-oversea@betop-cn.com

We also welcome our customer to provide suggestion so that to improve and upgrade our product. Any good idea for our products, please feel free to contact us. It's very grateful. Meanwhile we'll select the customer who in high-quality device to experience our new products for free opportunity.

Sincerely

BEITONG Customer Service Team

BEITONG

The leading and of intelligent gaming peripherals in China Customizing professional control solutions for different

of games Been focusing on game controller, soft ware R&D more than 20 years since 1997
More products and game information, please visit t he BEITONG Oialsiteon your PC to view or download E-User manual.

Betongue : <https://www.betop-cn.com/en/#/down>

For all Class B Digital Devices, a statement like the following is need ed :

This equipment has been tested and found t o comply with the limits for a Class B digital device, pursuant to Par t 15 of the FCC Rules. These limits are designed to provide reasonable protection against harmful interference in a residential installation. This equip ment generates uses and can radiate radio frequency energy and, if not installed and used in accordance with the instructions, may cause harmful interference to radio communications. However, there is no guarantee that interference will not occur in a articular installation. If this equip ment does cause harmful interference to rad ioortelevisionrecepti on, which can be determined by turning the equip ment o and o n, the user is encouraged to try to correct t he interference by one of the following measures:

- Reorient o r relocate the receiving antenna.
- Increase the separation between the equipment and receiver.
- Connect the equipment into an outlet on a circuit deferent rom that to which the receiver is connected.
- Consult the dealer or an experienced radio/TV technician for help.


This device complies with part 15 of the FCC Rules. Operation is subject t o the following two conditions:

1. This device may not cause harmful interference, and
2. the is device must accept any interference received , including interference that may cause undesired operate on Changes or mo dictations not expressly approved by the party responsible for compliance could void the user's authority to operate the equipment.

The device has been evaluated to meet general RF exposure requirement .



Documents / Resources

	BEITONG BTP-A1T2 Wireless Gamepad Game Controller [pdf] User Manual 2AWMK-BTP-A1T2, 2AWMKBTPA1T2, BTP-A1T2, BTP-A1T2 Wireless Gamepad Game Contr oller, Wireless Gamepad Game Controller, Gamepad Game Controller, Game Controller, Contr oller
---	--

References

- [cn.com](https://www.betop-cn.com)