



Beijer ELECTRONICS SER0060 X2 to BFI E2 Modbus TCP User Guide

[Home](#) » [Beijer ELECTRONICS](#) » Beijer ELECTRONICS SER0060 X2 to BFI E2 Modbus TCP User Guide 

RACKMOUNT IT RM-WG-T7 Rack Mounting Kit for WatchGuard Firebox



Contents

- 1 Function and area of use
- 2 About this document
- 3 Preparing the Communication
 - 3.1 BFI parameter settings
- 4 BFI Ethernet ports
 - 4.1 Indication of status on LED of BFI-E3
- 5 Web server in BFI-E3
 - 5.1 Module Configuration
 - 5.2 Network Statistic
 - 5.3 Modbus Statistics
 - 5.4 How to change IP-address and Network mask
 - 5.5 iX ModBusTCP settings
 - 5.6 ModBusRTU and ModBusTCP parallelly
 - 5.7 The iX Project
 - 5.8 Main Menu
- 6 Other Screens
 - 6.1 Remote IO Menu
 - 6.2 Other Screens
 - 6.3 Import the project parts
- 7 About Beijer Electronics
 - 7.1 Contact us
- 8 Documents / Resources
 - 8.1 References
- 9 Related Posts

Function and area of use

This document explains how to connect, configure and control one or multiple Beijer Frequency Inverters E3-MTP via ModBus TCP.

About this document

This quick start document should not be considered as a complete manual. It is an aid to be able to startup a normal application quickly and easily.

Copyright © Beijer Electronics, 2022

This documentation (below referred to as 'the material') is the property of Beijer Electronics. The holder or user has a non-exclusive right to use the material. The holder is not allowed to distribute the material to anyone outside his/her organization except in cases where the material is part of a system that is supplied by the holder to his/her customer. The material may only be used with products or software supplied by Beijer Electronics. Beijer Electronics assumes no responsibility for any defects in the material, or for any consequences that might arise from the use of the material. It is the responsibility of the holder to ensure that any systems, for whatever applications, which is based on or includes the material (whether in its entirety or in parts), meets the expected properties or functional requirements. Beijer Electronics has no obligation to supply the holder with updated versions.

Use the following items to obtain a stable application:

In this document we have used following software and hardware

- iX Developer 2.40 SP5 / SP6

- X2 base/pro/marine/control/extreme series

For further information refer to

- iX Developer Reference Manual (MAxx831)
- iX Developer User's Guide (MAxx832)
- BFI-E3 User Guide
- BFI-E3 Start-Up Manual KI00369B
- [Beijer Electronics knowledge database, HelpOnline](#)

This document and other quick start documents can be obtained from our homepage. Please use the address support.europe@beijerelectronics.com for feedback.

Preparing the Communication

This section describes the settings both for the BFI and the iX ModBus Master controller and some other helpful information.

BFI parameter settings

BFI-E3:

- P12=3. Modbus TCP control with Acceleration and Deceleration time in parameter P-03/ P-04.
- P12=4. Modbus TCP control with Acceleration and Deceleration time sent by Modbus TCP.

Adjust if necessary:

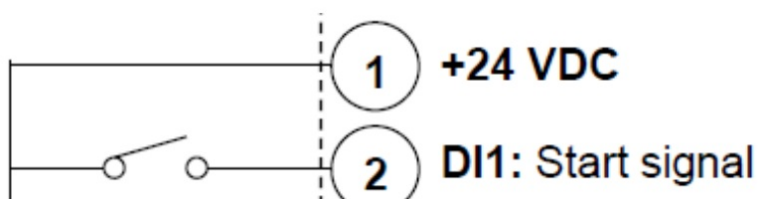
- P14=201 to make all parameters available.
- P36 = Station number must be 1.
- P36 = Communication speed must be 115,2 Kbits/sec.
- P36 = Timeout.

t => BFI will trip when no communication

r => BFI will coast to stop

Function can either be disabled by setting 0 second or set to 30, 100, 1000 or 3000 milliseconds

Additionally you either have to bridge Pin1 and Pin2 or use the start/direction switch to set the start signal.

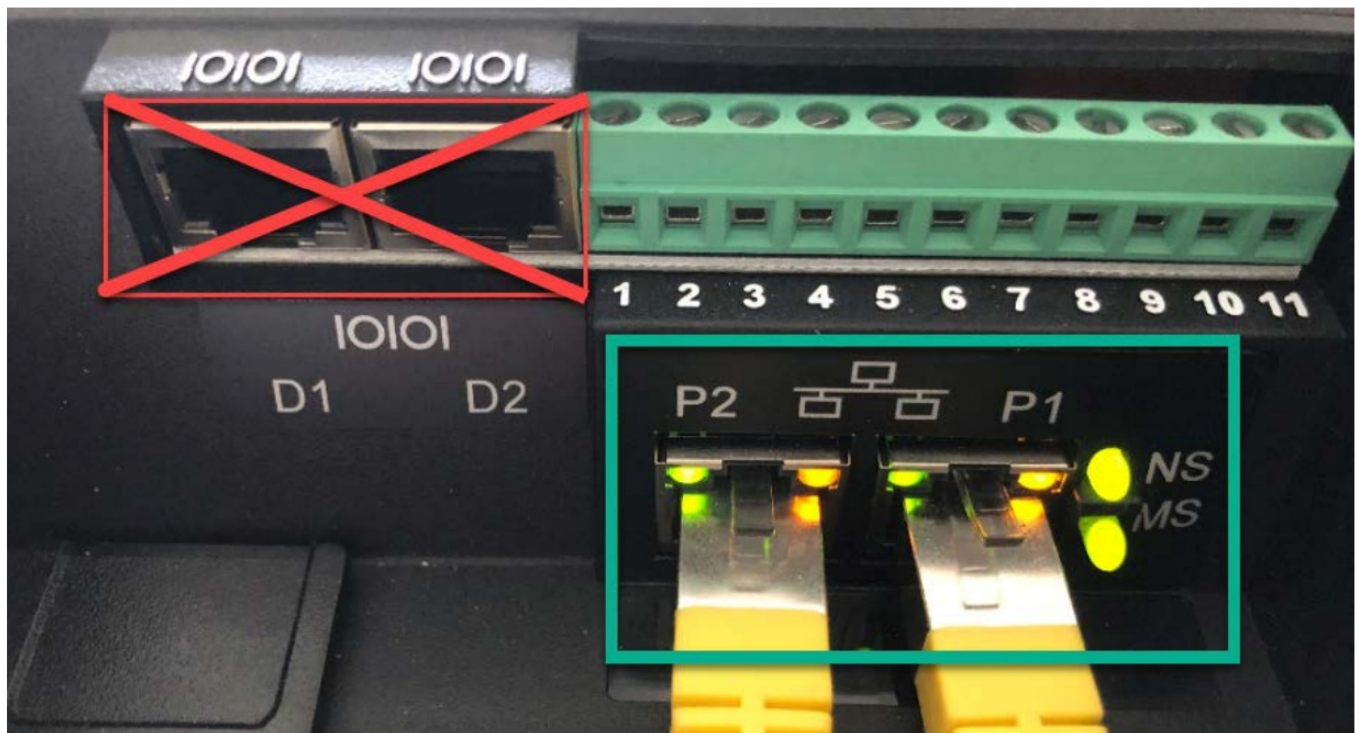


BFI Ethernet ports



The 2 Ethernet ports are marked P1 and P2 and have the same IP-address.

The 2 ports on the left side marked D1 and D2 are serial ports not intended for Ethernet. Faulty connection of cables might cause damage to either BFI-E3 or other equipment.



Indication of status on LED of BFI-E3

Example of LED indication of ethernet ports in BFI-E3.

Communication working



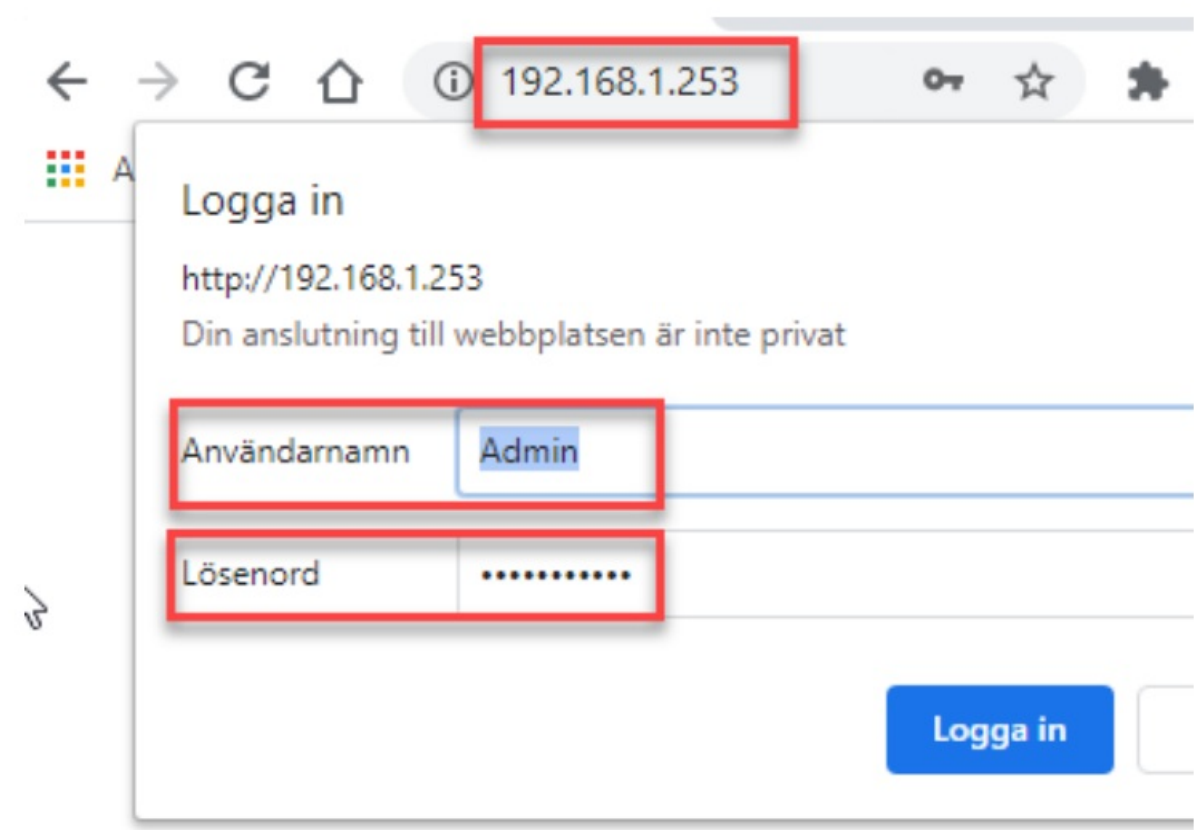
Communication interruption



Network Status Indicator, NS	
State	Indication
Steady Off	BFI is not powered up or no IP address
Flashing Green	Online, no Modbus TCP connections active
Steady Green	Online, Modbus TCP connections active
Flashing Red	Connection Timeout after working Modbus TCP connection
Steady Red	Duplicate IP address

Web server in BFI-E3

Default IP-address of BFI-E3 is 192.168.1.253 and Subnet: 255.255.255.0
Enter IP-address in the web browser. Username is Admin and Password is the serial number of the BFI.



Module Configuration

SYSTEM CONFIGURATION

Module

OPT-3-MTPIG-BFI

Serial Number	63890201001
Hardware Version	0419
Firmware Version	V101 R003 S0168
MAC Address	70:B3:D5:93:91:91

Primary Protocol

Modbus-TCP/IP	
Version	001.001
Vendor	Beijer Electronics AB
Product Code	OPT-3-MTPIG-BFI

- OPT-3-MTPIG-BFI is the name for the internal Modbus TCP board .
- The serial number is the identification for the complete BFI.
- Hardware version is 0419
- Latest available firmware in October 2020 is V101 R003 S0168

Network Statistic

STATISTICS: NETWORK

Socket Type	State	Local Port	Timer	Remote Address	Remote Port
UDP	-	69	-	-	-
TCP	ESTABLISHED	80	120	192.168.1.29	63988
TCP	ESTABLISHED	47850	9	192.168.1.29	63944
TCP	ESTABLISHED	502	120	192.168.1.40	49152

- 192.168.1.29 is the IP-address of the PC. Local port 80 with Socket type TCP is the web browser connection with BFI.

- 192.168.1.29 is the IP-address of the PC. Local port 47850 with Socket type TCP is PC-program BFI-Tools running on the PC.

- 192.168.1.40 is the IP-address of one X2-Control.

Modbus Statistics

Correct working communication without any fault should look like below. Counter of Transmitted, Received and Successful Transmissions are calculating upwards Error counters stays at 0.

STATISTICS: MODBUS

	Count	
Transmitted Messages	8064	To Modbus/SL Slave(s)
Transmitted Bytes	40325	To Modbus/SL Slave(s)
Received Messages	8064	From Modbus/SL Slave(s)
Received Bytes	88646	From Modbus/SL Slave(s)
Broadcast Messages	0	To Modbus/SL Slave(s)
Successful Transactions	8064	
Server Exceptions	0	Modbus/SL Slave returned an exception code
Unsuccessful Transactions	0	Modbus/SL Slave response was not detected
Checksum Errors	0	Received messages with CRC errors
Unexpected Messages	0	Modbus/SL Slave returned out of sequence response
Other Errors	0	

How to change IP-address and Network mask

- Enter new IP-address and/or Network Mask
- Push on Apply New Values

NETWORK INTERFACE CONFIGURATION

	Default Value	Saved Value	New Value
Configuration Method	Fixed	Fixed	Fixed <input type="button" value="v"/>
DNSEnable	Disabled	Disabled	Disabled <input type="button" value="v"/>
IP Address	192.168.001.253	192.168.001.253	192.168.001.253 <input type="text"/>
Network Mask	255.255.255.000	255.255.255.000	255.255.255.000 <input type="text"/>
Gateway Address	192.168.001.200	192.168.001.200	192.168.001.200 <input type="text"/>
Name Server	000.000.000.000	000.000.000.000	000.000.000.000 <input type="text"/>
Name Server 2	000.000.000.000	000.000.000.000	000.000.000.000 <input type="text"/>
SNTP Server	000.000.000.000	000.000.000.000	000.000.000.000 <input type="text"/>
Domain Name	"	"	<input type="text"/>
Host Name	'BFI_63890201001'	'BFI_63890201001'	BFI_63890201001 <input type="text"/>

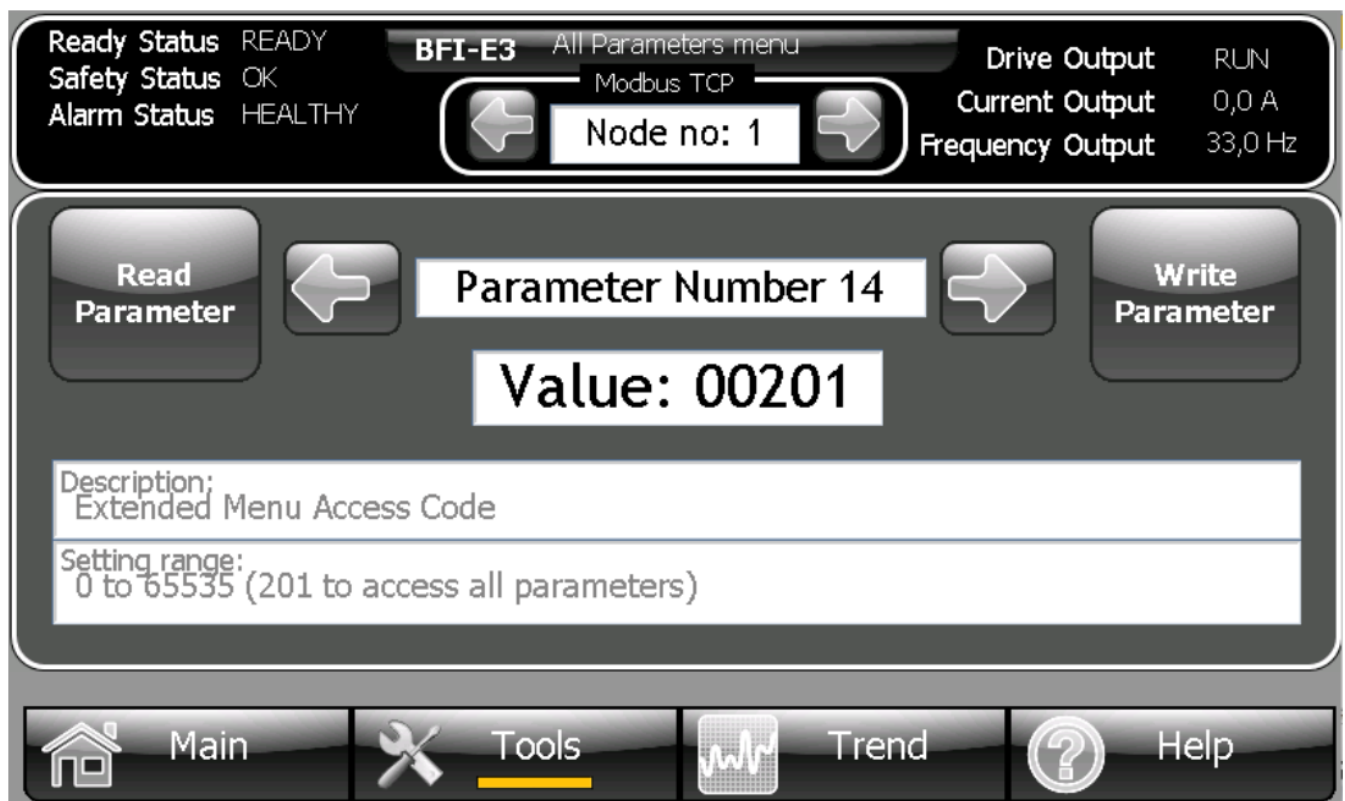
iX ModBusTCP settings

Configure the controller settings as shown below.



Other Screens

General BFI information.

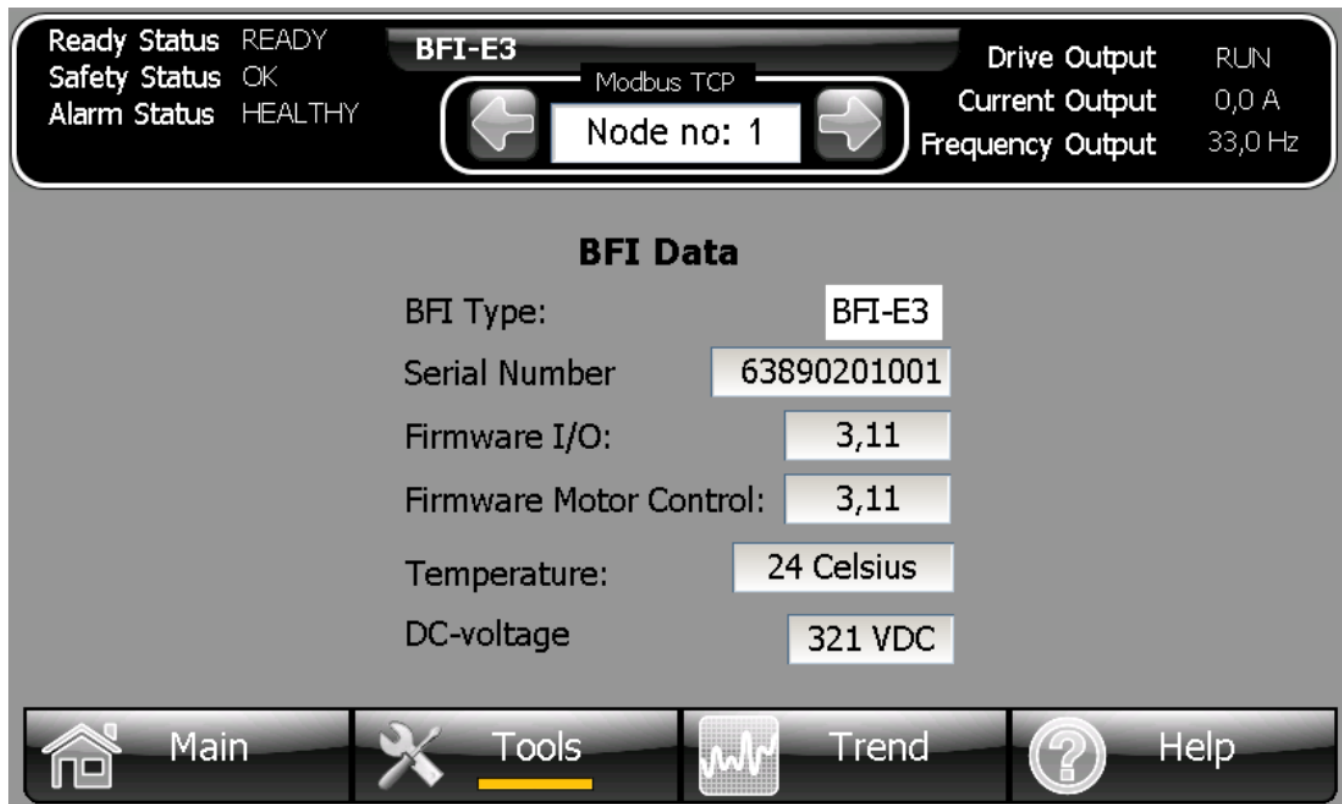


Remote IO Menu

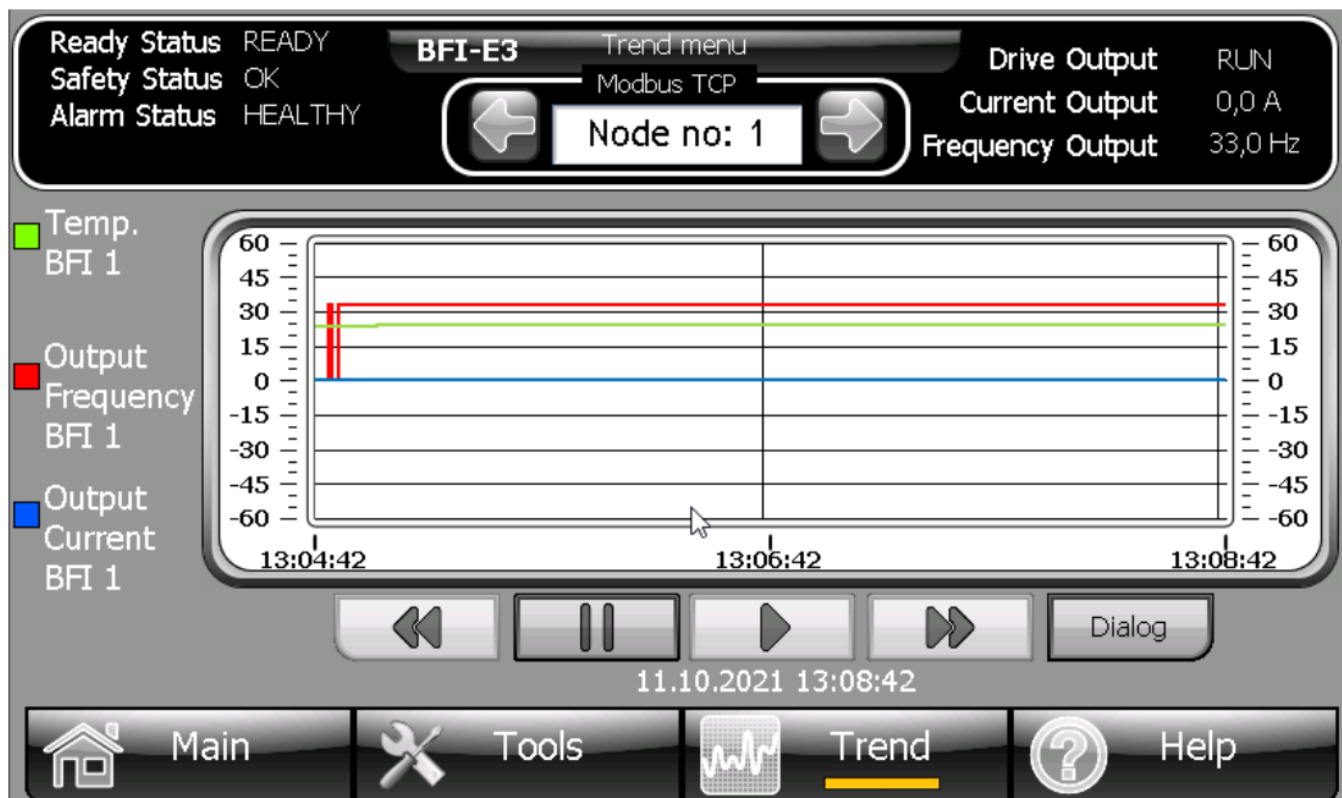
On this screen you can see the state of the digital and analog Inputs.

Other Screens

General BFI information.



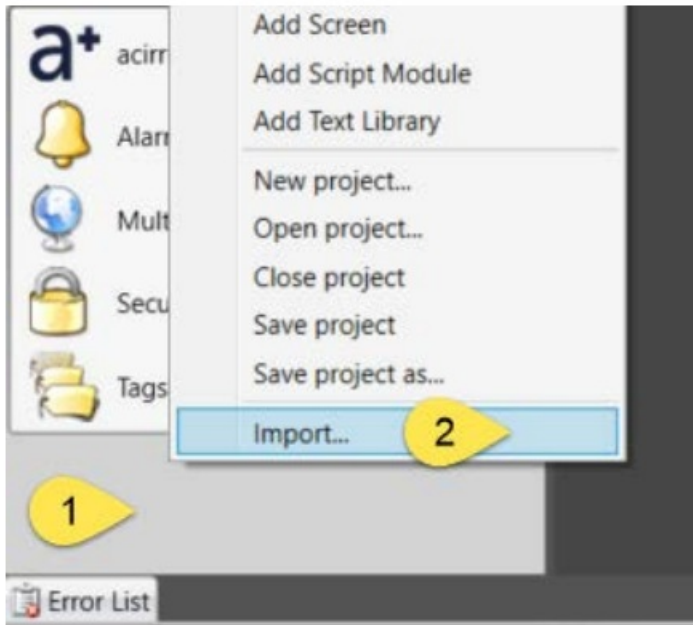
Trend based on a DataLogger.



Additionally there are a Help screen and a System Information screen.
This example works well for X2 baseV2/pro/marine/control/extreme series devices.
Please follow below guidelines how to install into your application.

Import the project parts

Follow the steps to add the enclosed screenS and the script module to your iX project:



1. Unpack the enclosed example ZIP-file to a temporary folder.
2. Start iX Developer and load your project.
3. In the Project Explorer, right-click in the lower left corner (1. in the picture)
4. In the list, select Import... (2. in the picture)
5. Navigate to the temporary folder, where you unpacked the ZIP-file and select ScriptModule_iX_BFI_E3_ModbusTCP.neo, click [Open].
6. Select TextLibrary.neo, click [Open].
7. Select Background.neoxaml, click [Open].
8. Select Demo_Main.neoxaml, click [Open].
9. Select Demo_AllPar.neoxaml, click [Open].
10. Optionally Select Demo_Drive_Info.neoxaml, click [Open].
11. Optionally Select Demo_Help.neoxaml, click [Open].
12. Optionally Select Demo_RemoteIO.neoxaml, click [Open].
13. Optionally Select Demo_Tools.neoxaml, click [Open].
14. Optionally Select Demo_Trend.neoxaml and DataLogger1.neo, click [Open].
15. Optionally Select Diagnostic.neoxaml, click [Open].
16. Assign the Background screen to all imported screens.
17. If you get validation errors when building the project, export the all Tags of the example project and import/merge it with your project Tags.
18. Check the DataTypes of all Tags, Scaling, Initial Values, Index Registers and connected Tag Actions as some properties are not exported/imported!
19. Done!

About Beijer Electronics

Beijer Electronics is a multinational, cross-industry innovator that connects people and technologies to optimize processes for business-critical applications. Our offer includes operator communication, automation solutions, digitalization, display solutions and support. As experts in user-friendly software, hardware and services for the Industrial Internet of Things, we empower you to meet your challenges through leading-edge solutions. Beijer Electronics is a Beijer Group company.

Since its start-up in 1981, BEIJER GROUP has evolved into a multinational group with sales of 1.4 billion SEK 2020. BEIJER GROUP is listed on the NASDAQ Stockholm Main Market under the ticker BELE.

www.beijergroup.com



China



Denmark



France



Germany



India



Norway



South Korea



Sweden HQ



Taiwan



Turkey



United Kingdom



USA




BeNeLux

Contact us




[Global offices and distributors](#)



Documents / Resources

	<p>Beijer ELECTRONICS SER0060 X2 to BFI E2 Modbus TCP [pdf] User Guide SER0060_QS_X2, BFI-E3, SER0060 X2 to BFI E2 Modbus TCP, SER0060 X2, BFI E2 Modbus TCP, Modbus TCP SER0060 X2</p>
---	---

References

-  [Ependion](#)
-  [Ependion](#)
-  [Contact us - Beijer Electronics](#)
-  [Help online - tree view - Beijer Electronics](#)

Manuals+.