



behringer XENYX Premium 12-10-Input 2-Bus Mixer User Guide

[Home](#) » [Behringer](#) » behringer XENYX Premium 12-10-Input 2-Bus Mixer User Guide 

Contents

- 1 behringer XENYX Premium 12-10-Input 2-Bus Mixer
- 2 Important Safety Instructions
- 3 LIMITED WARRANTY
- 4 Step 1: Hook-Up
- 5 Step 1: Hook-Up
- 6 Step 3: Getting started
- 7 Presets List
- 8 Specifications
- 9 Important information
- 10 FEDERAL COMMUNICATIONS COMMISSION COMPLIANCE INFORMATION
- 11 Documents / Resources
 - 11.1 References
- 12 Related Posts



behringer XENYX Premium 12-10-Input 2-Bus Mixer



Important Safety Instructions

Terminals marked with this symbol carry electrical current of sufficient magnitude to constitute risk of electric shock. Use only high-quality professional speaker cables with ¼" TS or twist-locking plugs pre-installed. All other installation or modification should be performed only by qualified personnel.



This symbol, wherever it appears, alerts you to the presence of uninsulated dangerous voltage inside the enclosure – voltage that may be sufficient to constitute a risk of shock.

Caution

- To reduce the risk of electric shock, do not remove the top cover (or the rear section). No user serviceable parts inside. Refer servicing to qualified personnel.
- To reduce the risk of fire or electric shock, do not expose this appliance to rain and moisture. The apparatus shall not be exposed to dripping or splashing liquids and no objects filled with liquids, such as vases, shall be placed on the apparatus.
- These service instructions are for use by qualified service personnel only. To reduce the risk of electric shock do not perform any servicing other than that contained in the operation instructions. Repairs have to be performed by qualified service personnel.

1. Read these instructions.
2. Keep these instructions.
3. Heed all warnings.
4. Follow all instructions.
5. Do not use this apparatus near water.
6. Clean only with dry cloth.
7. Do not block any ventilation openings. Install in accordance with the manufacturer's instructions.
8. Do not install near any heat sources such as radiators, heat registers, stoves, or other apparatus (including

amplifiers) that produce heat.

9. Do not defeat the safety purpose of the polarized or grounding-type plug. A polarized plug has two blades with one wider than the other. A grounding-type plug has two blades and a third grounding prong. The wide blade or the third prong are provided for your safety. If the provided plug does not fit into your outlet, consult an electrician for the replacement of the obsolete outlet.
10. Protect the power cord from being walked on or pinched particularly at plugs, convenience receptacles, and the point where they exit from the apparatus.
11. Use only attachments/accessories specified by the manufacturer.
12. Use only with the cart, stand, tripod, bracket, or table specified by the manufacturer, or sold with the apparatus. When a cart is used, use caution when moving the cart/apparatus combination to avoid injury from tip-over.



13. Unplug this apparatus during lightning storms or when unused for long periods of time.
14. Refer all servicing to qualified service personnel. Servicing is required when the apparatus has been damaged in any way, such as power supply cord or plug is damaged, liquid has been spilled or objects have fallen into the apparatus, the apparatus has been exposed to rain or moisture, does not operate normally, or has been dropped.
15. The apparatus shall be connected to a MAINS socket outlet with a protective earthing connection.
16. Where the MAINS plug or an appliance coupler is used as the disconnect device, the disconnect device shall remain readily operable.
17. Correct disposal of this product: This symbol indicates that this product must not be disposed of with household waste, according to the WEEE Directive (2012/19/EU) and your national law. This product should be taken to a collection center licensed for the recycling of waste electrical and electronic equipment (EEE). The mishandling of this type of waste could have a possible negative impact on the environment and human health due to potentially hazardous substances that are generally associated with EEE. At the same time, your cooperation in the correct disposal of this product will contribute to the efficient use of natural resources. For more information about where you can take your waste equipment for recycling, please contact your local city office, or your household waste collection service.
18. Do not install in a confined space, such as a book case or similar unit.
19. Do not place naked flame sources, such as lighted candles, on the apparatus.
20. Please keep the environmental aspects of battery disposal in mind. Batteries must be disposed-of at a battery collection point.
21. This apparatus may be used in tropical and moderate climates up to 45°C.

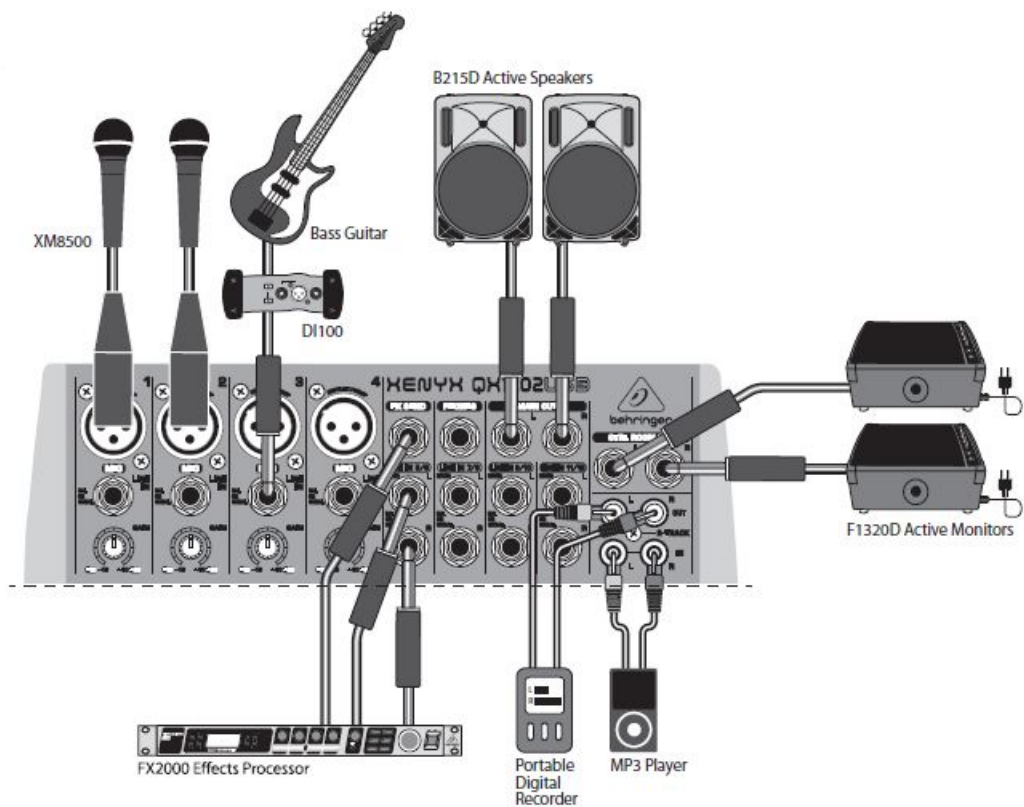
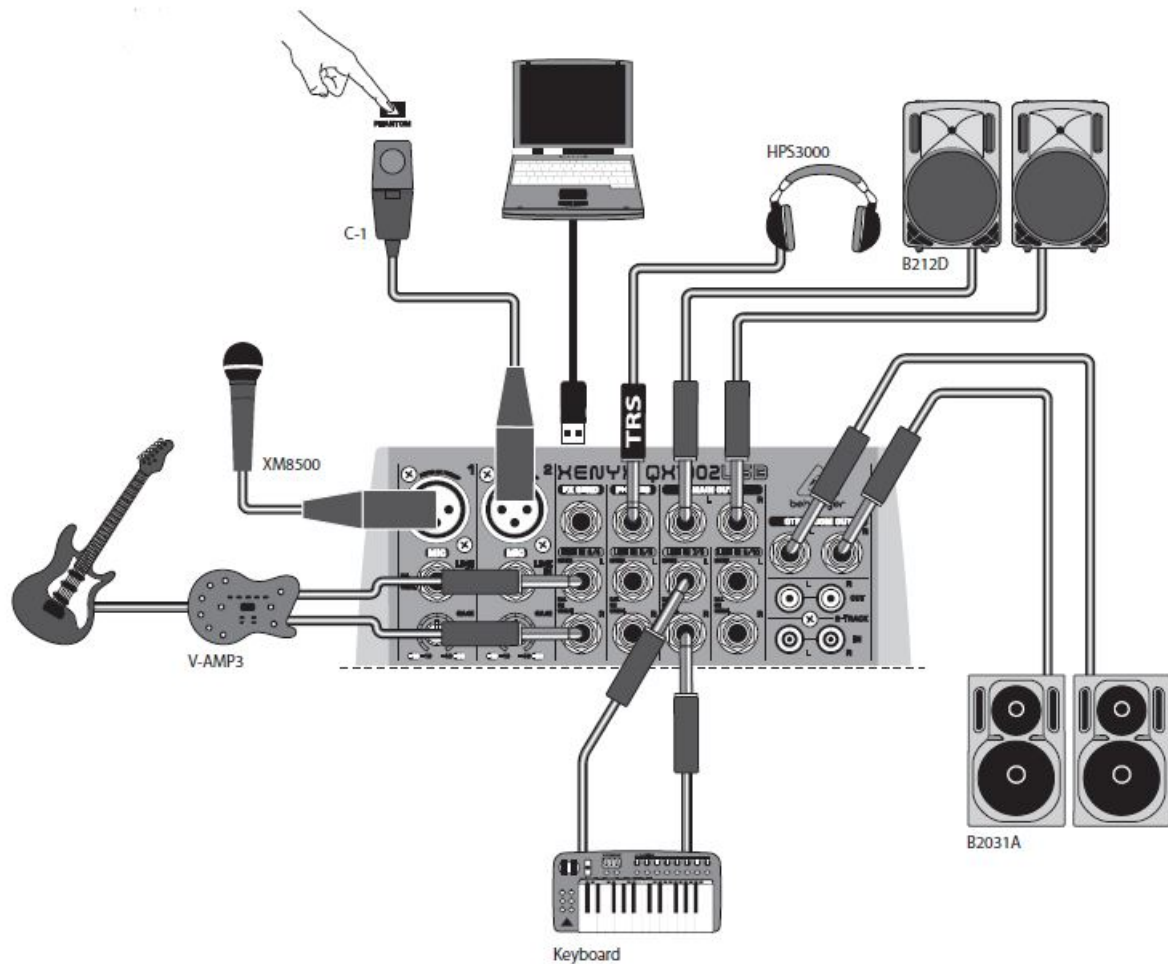
LEGAL DISCLAIMER

Music Tribe accepts no liability for any loss which may be suffered by any person who relies either wholly or in part upon any description, photograph, or statement contained herein. Technical specifications, appearances and other information are subject to change without notice. All trademarks are the property of their respective owners. Midas, Klark Teknik, Lab Gruppen, Lake, Tannoy, Turbosound, TC Electronic, TC Helicon, Behringer, Bugera, Oberheim, Auratone and Coolaudio are trademarks or registered trademarks of Music Tribe Global Brands Ltd. ©

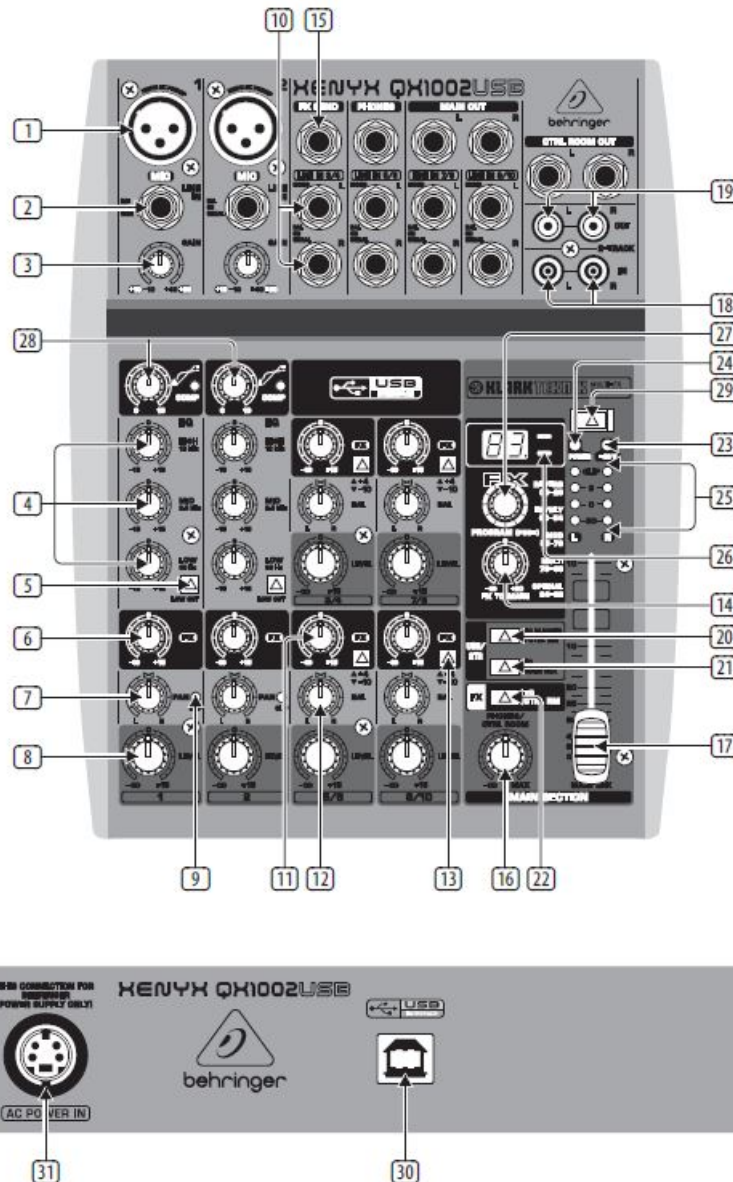
LIMITED WARRANTY

For the applicable warranty terms and conditions and additional information regarding Music Tribe's Limited Warranty, please see complete details online at musictribe.com/warranty.

Step 1: Hook-Up



Step 1: Hook-Up



This chapter describes the various control elements of your mixing console. All controls, switches and connectors will be discussed in detail.

1. MIC – Each mono input channel offers a balanced microphone input via the XLR connector and also features switchable
+ 48 V phantom power supply for condenser microphones. The XENYX preamps provide undistorted and noise-free gain as is typically known only from costly outboard preamps.
2. LINE IN – Each mono input also features
a balanced line input on a 1/4" connector. Unbalanced devices (mono jacks) can also be connected to these inputs. Please remember that you can only use either the microphone or the line input of a channel at any one time. You can never use both simultaneously!
3. GAIN – Use the GAIN control to adjust the input gain. This control should always be turned fully counterclockwise whenever you connect or disconnect a signal source to one of the inputs.
4. EQ – All mono input channels include a
3-band equalizer. All bands provide boost or cut of up to 15 dB. In the central position, the equalizer is inactive.
5. LOW CUT – In addition, the mono channels are equipped with a steep LOW CUT filter designed to eliminate unwanted low-frequency signal components.

6. FX – FX sends enable you to feed signals via a variable control from one or more channels and sum these signals to a bus. The bus appears at the console's FX send output and can be fed from there to an external effects device. The return from the effects unit is then brought back into the console on the stereo channels. Each FX send is mono and features up to +15 dB gain. In the QX1002USB/QX1202USB, the FX send is routed directly to the built-in effects processor. To make sure that the effects processor receives an input signal, you shouldn't turn this control all the way to the left ($-\infty$).
7. PAN – The PAN control determines the position of the channel signal within the stereo image. This control features a constant-power characteristic, which means the signal is always maintained at a constant level, irrespective of position in the stereo panorama.
8. LEVEL – The LEVEL control determines the level of the channel signal in the main mix.
9. CLIP – The CLIP LED's of the mono channels illuminate when the input signal is driven too high, which could cause distortion. If this happens, use the GAIN control to reduce the preamp level until the LED does not light anymore.
10. LINE IN – Each stereo channel has two balanced line level inputs on 1/4" jacks for left and right channels. If only the jack marked "L" (left) is used, the channel operates in mono. The stereo channels are designed to handle typical line level signals. Both inputs will also accept unbalanced jacks.
11. FX – The FX sends of the stereo channels function similar to those of the mono channels. However, since the FX send buses are both mono, a mono sum is first taken from the stereo input before it is sent to the FX bus.
12. BAL – The BAL(ANCE) control determines the levels of left and right input signals relative to each other before both signals are then routed to the main stereo mix bus. If a channel is operated in mono via the left line input, this control has the same function as the PAN control used in the mono channels.
13. +4/-10 – The stereo inputs of the XENYX QX1002USB and QX1202USB have an input sensitivity switch which selects between +4 dBu and -10 dBV. At -10 dBV (home-recording level), the input is more sensitive (requires less level to drive it) than at +4 dBu (studio level).
14. FX TO MAIN – The FX TO MAIN control feeds the effects signal into the main mix. If the control is turned all the way counterclockwise, no effects signal is present in the sum signal of the mixing console.
15. FX SEND – The FX SEND connector outputs the signal you picked up from the individual channels using the FX controls. You can connect this to the input of an external effects device in order to process the FX bus' master signal. Once an effects mix is created, the processed signal can then be routed from the effects device outputs back into a stereo input.
16. PHONES/CONTROL ROOM – The stereo PHONES jack (at the top of the connector panel) is where you connect headphones. The unbalanced CTRL ROOM OUT jacks carry the summed effects and main mix signals, as well as soloed channel signals. The PHONES/CONTROL ROOM control adjusts the level of both headphones and main monitor outputs.
17. MAIN MIX – The MAIN OUT connectors are balanced mono jacks. The main mix signal appears here at a level of 0 dBu. The MAIN MIX fader adjusts the volume of these outputs.
18. CD/TAPE INPUT – The CD/TAPE INPUTs are used to bring an external signal source (e.g. CD player, tape deck, etc.) into the console. They can also be used as a standard stereo line input, so the output of a second XENYX or BEHRINGER ULTRALINK PRO MX882 can be connected.
19. CD/TAPE OUTPUT – These connectors are wired in parallel with the MAIN OUT and carry the main mix signal

(unbalanced). Connect the CD/TAPE OUTPUT to the inputs of your recording device. The output level is adjusted via the high-precision MAIN MIX fader.

20. USB/2-TR TO PHONES/CTRL RM button routes USB/2-Track playback to PHONES/CTRL ROOM.
21. USB/2-TR TO MAIN MIX button routes USB/2-Track playback to MAIN MIX and mutes the 2-TR OUT/USB recording signal.
22. FX TO CTRL ROOM – If you want to monitor only the FX send signal in your headphones or monitor speaker(s), press the FX TO CTRL switch. This mutes the main mix signal while routing the FX SEND output to the monitor(s).
23. +48 V – The +48 V LED lights up when phantom power is on. The PHANTOM switch activates the phantom power supply on the XLR connectors of all mono channels.
24. POWER – The POWER LED indicates that the console is powered on.
25. LEVEL INDICATOR – The high-precision 4- segment display accurately displays the relevant signal level.
26. SIGNAL and CLIP LED – The SIGNAL LED on the effects module shows the presence of a signal whose level is high enough. This LED should always be on. However, make sure that the CLIP LED lights up only sporadically. If it is lit constantly, you are overdriving the effects processor, which leads to unpleasant distortion. If this occurs, turn the FX controls down somewhat.
27. PROGRAM – The PROGRAM control has two functions: by turning the PROGRAM control, you dial the number of an effect. The number of the preset you just dialed up blinks in the display. To confirm your selection, press the PROGRAM control; the blinking stops.
28. COMP – This knob adjusts the amount of compression effect on the channel.
29. PHANTOM – Press this button to send +48 V of phantom power to the XLR inputs for use with condenser microphones.
30. USB CONNECTOR – Connect your mixer to a computer using a standard USB cable.
31. AC POWER IN – Connect the included power cable here.

The mixer cannot be bus-powered via USB. Always use the included power adapter to supply power to the mixer.

Step 3: Getting started

To correctly set the gains of the channels, first set the LEVEL controls of the input channels to their center positions (0 dB). Then use the GAIN controls to increase the input amplification until signal peaks show 0 dB on the level meter.

When recording to digital recorders, the recorder's peak meter should not go into overload. While analog recorders can be overloaded to some extent, creating only a certain amount of distortion (which is common and often desirable), digital recorders distort quickly when overloaded. In addition, digital distortion is not only undesirable, but also renders your recording completely useless. The peak meters of your XENYX display the level virtually independent of frequency. A recording level of 0 dB is recommended for all signal types.

Presets List

Reverb

00	Small Chamber
01	Mid Chamber
02	Big Chamber
03	Theater
04	Small Room 1
05	Small Room 2
06	Mid Room 1
07	Mid Room 2
08	Large Room
09	Small Hall
10	Concert Hall
11	Mid Hall
12	Big Hall
13	Ambient Hall
14	Church
15	Short Plate
16	Mid Plate
17	Long Plate
18	Gold Plate
19	Vint250Verb 1
20	Vint250Verb 2
21	Mid Spring
22	Long Spring
23	Gated Reverb Short
24	Gated Reverb Mid
25	Gated Reverb Long
26	Gated Alive
27	Reverse Short
28	Reverse Mid
29	Reverse Long

Early Reflections / Delay

30	Short Ambience
31	Mid Ambience
32	Live Ambience
33	Big Ambience
34	Stadium
35	Early Reflections 1
36	Early Reflections 2
37	Early Reflections 3
38	Early Reflections 4
39	Slap Delay

Early Reflections / Delay

40	Short Delay 1
41	Short Delay 2
42	Mid Delay 1
43	Mid Delay 2
44	Mid Delay 3
45	Long Delay 1
46	Long Delay 2
47	Long Delay 3
48	Stereo Delay
49	Ping-Pong Delay
50	Short Echo
51	Mid Echo 1
52	Mid Echo 2
53	Long Echo 1
54	Long Echo 2

Modulation

55	Soft Chorus
56	Warm Chorus
57	Phat Chorus
58	Classic Flanger
59	Warm Flanger
60	Stereo Flanger
61	Classic Phaser
62	Warm Phaser
63	Heavy Phaser
64	Stereo Phaser
65	Slow Tremolo
66	Fast Tremolo
67	Panner 1
68	Panner 2
69	Detune 1
70	Detune 2
71	Minor Third Up
72	Major Third Up
73	Fifth Up
74	Fourth Down
75	Octave Down
76	Minor Chord
77	Major Chord
78	Jazzy

Multi

79	Delay + Chorus 1
80	Delay + Chorus 2
81	Delay + Chorus 3
82	Delay + Flanger 1
83	Delay + Flanger 2
84	Delay + Pitch 1
85	Delay + Pitch 2
86	Delay + Reverb 1
87	Delay + Reverb 2
88	Delay + Reverb 3
89	Chorus + Reverb 1
90	Chorus + Reverb 2
91	Flanger + Reverb 1
92	Flanger + Reverb 2
93	Detune + Reverb

Special FX

94	LFO Filter 1
95	LFO Filter 2
96	Talkbox 1
97	Talkbox 2
98	Overdrive
99	Distortion

Specifications

Mono Inputs

@ 0 Ω source resistance	-133 dB / 137 dB A-weighted
@ 50 Ω source resistance	-130 dB / 134 dB A-weighted
@ 150 Ω source resistance	-127 dB / 131 dB A-weighted
Frequency response (-1 dB)	<10 Hz – 150 kHz (-1 dB)
Frequency response (-3 dB)	<10 Hz – 200 kHz (-3 dB)
Gain range	+10 dB to +60 dB
Max. input level	+10.8 dBu @ +10 dB Gain
Impedance	1.9 k Ω balanced
Signal-to-noise ratio	107 dB / 110 dB A-weighted, +22 dB Gain
Distortion (THD + N)	0.006% / 0.005% A-weighted

Line Input

Type	1/4" TRS connector, balanced
Impedance	20 k Ω balanced, 10 k Ω unbalanced
Gain range	-10 dB to +40 dB
Max. input level	+21 dBu @ 0 dB Gain

Stereo Inputs

Type	2 x 1/4" TRS connector, balanced
Impedance	20 k Ω balanced, 10 k Ω unbalanced (+4 dBu operating level) 20 k Ω balanced, 5 k Ω unbalanced (-10 dBV)
Gain range	-20 dB to +20 dB
Max. input level	+22 dBu

CD/Tape In

Type	RCA connector
Impedance	19.5 k Ω
Max. input level	+21 dBu

Equalizer

Low	80 Hz / ± 15 dB
Mid	2.5 kHz / ± 15 dB
High	12 kHz / ± 15 dB

Aux Sends

Type	¼" TRS connector, balanced
Impedance	120 Ω
Max. output level	+21 dBu

Aux Returns

Type	¼" TRS connector, balanced
Impedance	20 k Ω balanced, 10 k Ω unbalanced
Max. input level	+21 dBu

Main Outputs

Type	¼" TRS connector, balanced
Impedance	120 Ω balanced
Max. output level	+21 dBu

Control Room Output

Type	¼" TRS connector, balanced
Impedance	120 Ω
Max. output level	+21 dBu

Phones Output

Type	¼" TRS connector, unbalanced
Max. output level	+21 dBu / 22 Ω (+25 dBm)

CD/Tape Out

Type	RCA connector, unbalanced
Impedance	1 k Ω
Max. output level	+21 dBu

Main Mix System Data (Noise)

Main mix @ $-\infty$, channel fader @ $-\infty$	-105 dB / -108 dB A-weighted
Main mix @ 0 dB, channel fader @ $-\infty$	-93 dB / -96 dB A-weighted
Main mix @ 0 dB, channel fader @ 0 dB	-83 dB / -85 dB A-weighted

FX Section

Type	KLARK TEKNIK
Converter	24-bit Sigma Delta
Sample rate	40 kHz

Power Supply

USA/Canada	120 V~, 60 Hz
Adapter	MXUL6
Australia	230 – 240 V~, 50 Hz
Adapter	MXSAA6
U.K./Europe	230 V~, 50 Hz
Adapter	MXUK6 / MXEU6
China/Korea	220 V~, 50 Hz / 220 V~, 60 Hz
Adapter	MXCCC6 / MXKR6
Japan	100 V~, 50/60 Hz
Adapter	MXJP6
Output	2 x 14.8 V~, 2 x 500 mA

USB

Connecter	Type B
Sample rate	48 kHz

Important information

1. Register online. Please register your new Music Tribe equipment right after you purchase it by visiting musictribe.com. Registering your purchase using our simple online form helps us to process your repair claims more quickly and efficiently. Also, read the terms and conditions of our warranty, if applicable.
2. Malfunction. Should your Music Tribe Authorized Reseller not be located in your vicinity, you may contact the

Music Tribe Authorized Fulfiller for your country listed under “Support” at musictribe.com. Should your country not be listed, please check if your problem can be dealt with by our “Online Support” which may also be found under “Support” at musictribe.com. Alternatively, please submit an online warranty claim at musictribe.com BEFORE returning the product.

3. **Power Connections.** Before plugging the unit into a power socket, please make sure you are using the correct mains voltage for your particular model. Faulty fuses must be replaced with fuses of the same type and rating without exception.

FEDERAL COMMUNICATIONS COMMISSION COMPLIANCE INFORMATION

This equipment has been tested and found to comply with the limits for a Class B digital device, pursuant to part 15 of the FCC Rules. These limits are designed to provide reasonable protection against harmful interference in a residential installation. This equipment generates, uses and can radiate radio frequency energy and, if not installed and used in accordance with the instructions, may cause harmful interference to radio communications. However, there is no guarantee that interference will not occur in a particular installation. If this equipment does cause harmful interference to radio or television reception, which can be determined by turning the equipment off and on, the user is encouraged to try to correct the interference by one or more of the following measures:

- Reorient or relocate the receiving antenna.
- Increase the separation between the equipment and receiver.
- Connect the equipment into an outlet on a circuit different from that to which the receiver is connected.
- Consult the dealer or an experienced radio/TV technician for help.

This equipment complies with Part 15 of the FCC Rules. Operation is subject to the following two conditions:

1. This device may not cause harmful interference, and
2. This device must accept any interference received, including interference that may cause undesired operation.

Important information:

Changes or modifications to the equipment not expressly approved by MUSIC Tribe can void the user’s authority to use the equipment.

Hereby, Music Tribe declares that this product is in compliance with Directive 2014/35/EU, Directive 2014/30/EU, Directive 2011/65/EU and Amendment 2015/863/EU, Directive 2012/19/EU, Regulation 519/2012 REACH SVHC and Directive

1907/2006/EC. Full text of EU DoC is available at <https://community.musictribe.com/> EU Representative:



Music Tribe Brands DK A/S Address: Ib Spang Olsens Gade 17, DK – 8200 Aarhus N, Denmark

- **Responsible Party Name:** Music Tribe Commercial NV Inc.
- **Address:** 5270 Procyon Street, Las Vegas NV 89118, United States
- **Phone Number:** +1 702 800 8290

Documents / Resources

	behringer XENYX Premium 12-10-Input 2-Bus Mixer [pdf] User Guide XENYX, QX1202USB, QX1002USB, Premium 12-10-Input 2-Bus Mixer
---	--

References

-  [Music Tribe](#)
-  [Music Tribe](#)