


behringer TRUTH 3.5 Powered Studio Monitor



# behringer TRUTH 3.5 Powered Studio Monitor User Guide

[Home](#) » [Behringer](#) » behringer TRUTH 3.5 Powered Studio Monitor User Guide 

## Contents

- [1 behringer TRUTH 3.5 Powered Studio Monitor](#)
- [2 Important Safety Instructions](#)
- [3 LIMITED WARRANTY](#)
- [4 Controls](#)
- [5 Operation](#)
- [6 Setup](#)
- [7 FEDERAL COMMUNICATIONS COMMISSION COMPLIANCE INFORMATION](#)
- [8 Documents / Resources](#)
  - [8.1 References](#)








**behringer TRUTH 3.5 Powered Studio Monitor**



## Important Safety Instructions



-  Terminals marked with this symbol carry electrical current of sufficient magnitude to constitute risk of electric shock. Use only high-quality professional speaker cables with ¼" TS or twist-locking plugs pre-installed. All other installation or modifications should be performed only by qualified personnel.
-  This symbol, wherever it appears, alerts you to the presence of uninsulated dangerous voltage inside the enclosure – voltage that may be sufficient to constitute a risk of shock.  
This symbol, wherever it appears, alerts you to important operating and maintenance instructions in the accompanying literature. Please read the manual.
-  Caution  
To reduce the risk of electric shock, do not remove the top cover (or the rear section). No user serviceable parts inside. Refer servicing to qualified personnel.
-  Caution  
To reduce the risk of fire or electric shock, do not expose this appliance to rain and moisture. The apparatus shall not be exposed to dripping or splashing liquids and no objects filled with liquids, such as vases, shall be placed on the apparatus.
-  Caution

These service instructions are for use by qualified service personnel only. To reduce the risk of electric shock do not perform any servicing other than that contained in the operation instructions. Repairs have to be performed by qualified service personnel.

1. Read these instructions.
2. Keep these instructions.
3. Heed all warnings.
4. Follow all instructions.
5. Do not use this apparatus near water.
6. Clean only with dry cloth.
7. Do not block any ventilation openings. Install in accordance with the manufacturer's instructions.
8. Do not install near any heat sources such as radiators, heat registers, stoves, or other apparatus (including amplifiers) that produce heat.
9. Do not defeat the safety purpose of the polarized or grounding-type plug. A polarized plug has two blades with one wider than the other. A grounding-type plug has two blades and a third grounding prong. The wide blade or the third prong are provided for your safety. If the provided plug does not fit into your outlet, consult an electrician for the replacement of the obsolete outlet.
10. Protect the power cord from being walked on or pinched particularly at plugs, convenience receptacles, and the point where they exit from the apparatus.
11. Use only attachments/accessories specified by the manufacturer.
12. Use only with the cart, stand, tripod, bracket, or table specified by the manufacturer, or sold with the apparatus. When a cart is used, use caution when moving the cart/apparatus combination to avoid injury from tip-over.
13. Unplug this apparatus during lightning storms or when unused for long periods of time.
14. Refer all servicing to qualified service personnel. Servicing is required when the apparatus has been damaged in any way, such as power supply cord or plug is damaged, liquid has been spilled or objects have fallen into the apparatus, the apparatus has been exposed to rain or moisture, does not operate normally, or has been dropped.
15. The apparatus shall be connected to a MAINS socket outlet with a protective earthing connection.
16. Where the MAINS plug or an appliance coupler is used as the disconnect device, the disconnect device shall remain readily operable.
17. Correct disposal of this product: This symbol indicates that this product must not be disposed of with household waste, according to the WEEE Directive (2012/19/EU) and your national law. This product should be taken to a collection center licensed for the recycling of waste electrical and electronic equipment (EEE). The mishandling of this type of waste could have a possible negative impact on the environment and human health due to potentially hazardous substances that are generally associated with EEE. At the same time, your cooperation in the correct disposal of this product will contribute to the efficient use of natural resources. For more information about where you can take your waste equipment for recycling, please contact your local city office, or your household waste collection service.
18. Do not install in a confined space, such as a bookcase or similar unit.
19. Do not place naked flame sources, such as lighted candles, on the apparatus.
20. Please keep the environmental aspects of battery disposal in mind. Batteries must be disposed of at a battery collection point.
21. This apparatus may be used in tropical and moderate climates up to 45°C.

## LEGAL DISCLAIMER

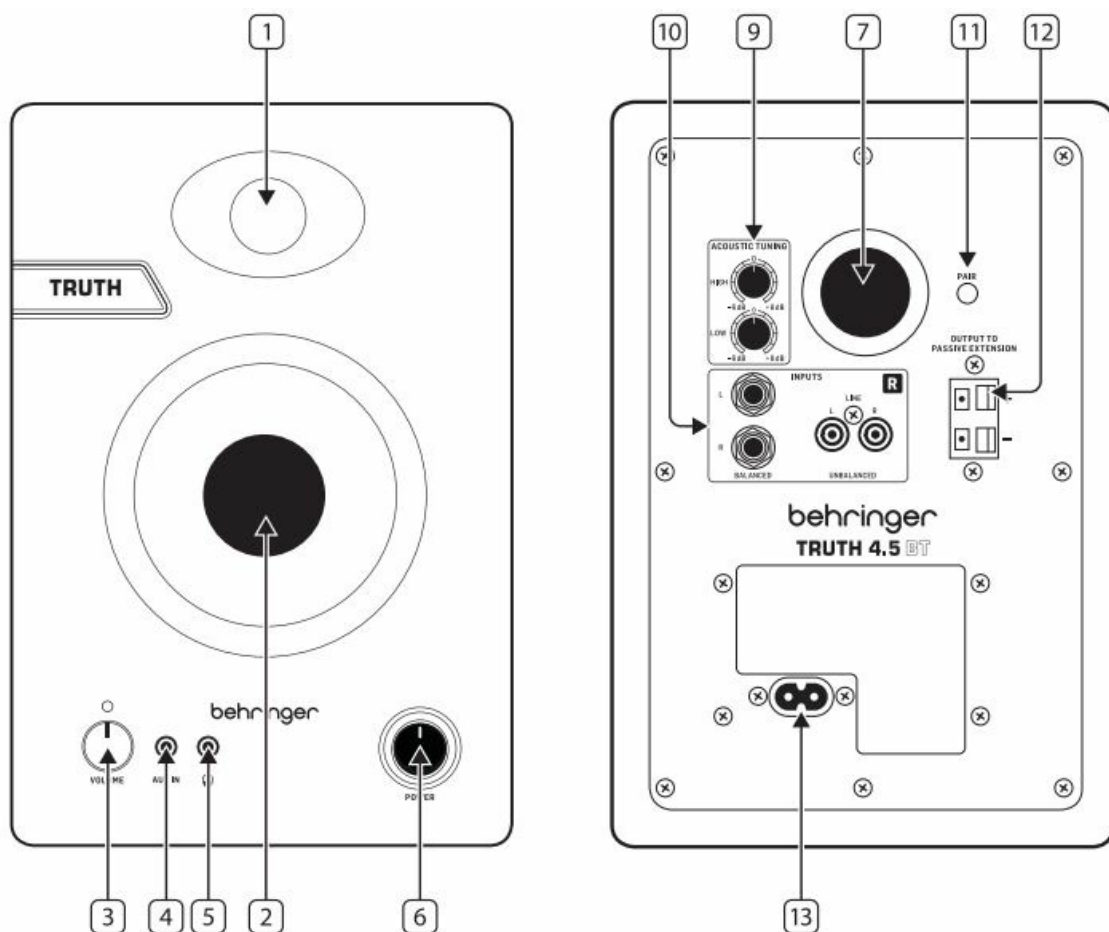
Music Tribe accepts no liability for any loss which may be suffered by any person who relies either wholly or in part upon any description, photograph, or statement contained herein. Technical specifications, appearances and other information are subject to change without notice. All trademarks are the property of their respective owners. Midas, Klark Teknik, Lab Gruppen, Lake, Tannoy, Turbosound, TC Electronic, TC Helicon, Behringer, Bugera, Aston Microphones and Coolaudio are trademarks or registered trademarks of Music Tribe Global Brands Ltd. © Music Tribe Global Brands Ltd. 2023 All rights reserved.


## LIMITED WARRANTY

For the applicable warranty terms and conditions and additional information regarding Music Tribe's Limited Warranty, please see complete details online at [community.musictribe.com/pages/support#warranty](https://community.musictribe.com/pages/support#warranty)

## Controls

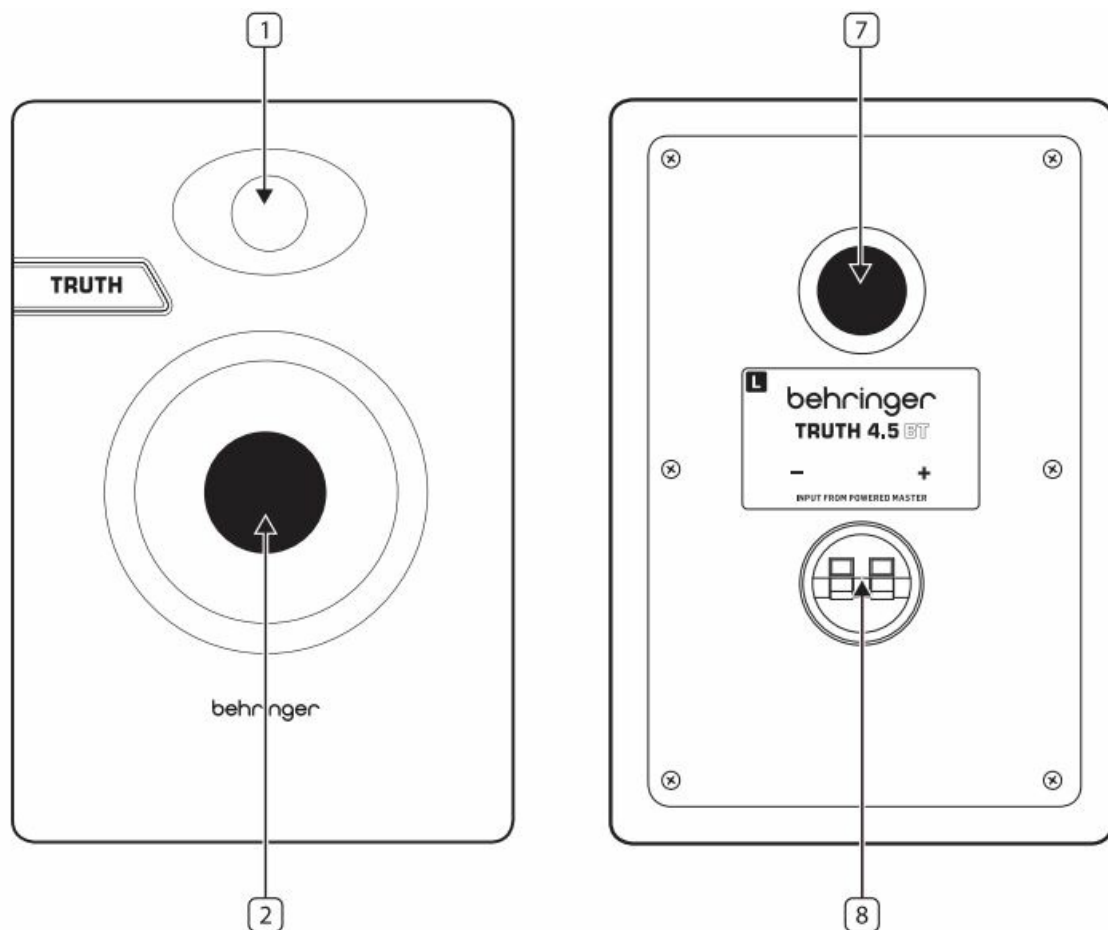
### Master Speaker



1. DOME TWEETER
2. WOOFER
3. VOLUME – knob controls the final output volume.
4. AUX IN – input accepts audio signals over a cable with 1/8" TRS stereo connectors.
5.  – output lets you connect headphones with 1/8" TRS stereo connectors.
6. POWER – button turns the speaker on and off.
7. BASS PORT
8. SPRING CLIPS – connects the Slave speaker to the Master speaker using speaker wire.

9. ACOUSTIC TUNING – lets you adjust the high (HIGH knob) and low (LOW knob) audio frequencies to suit your acoustic space.
10. INPUTS – allow you connect audio sources using either balanced ¼” TRS connectors or line-level RCA plugs.
11. PAIR – button activates the Bluetooth pairing process for wireless audio streaming.
12. OUTPUT TO SPEAKER – connections allow you to run speaker wire to the Slave speaker to handle the Right stereo channel.
13. A standard power socket is provided for connection to the mains.

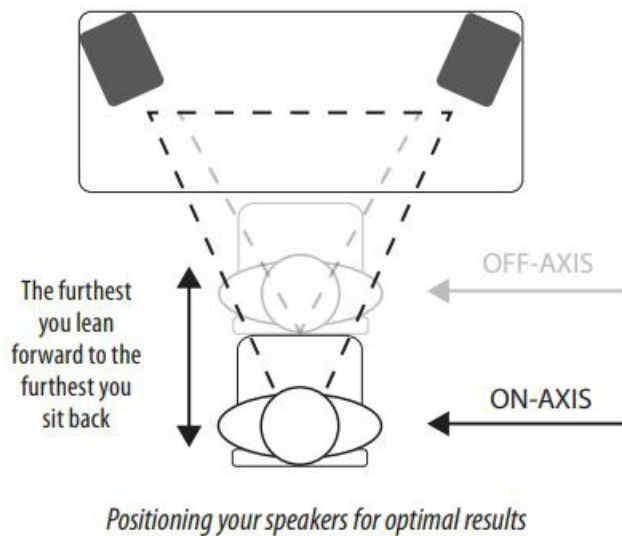
### Slave Speaker



## Operation

### Positioning your speakers

These monitors are designed as near-field monitors, positioned typically 0.75 to 3 meters from the listener. They will typically be placed on the mixer metering bridge or on a table either side of a smaller mixing desk or control surface. They may also be mounted on appropriate loudspeaker stands or brackets, which will yield the best results in terms of stability and vibration. In all cases, these speakers should be angled towards the listener, with the tweeter approximately at ear height



## Setup

1. Place the monitor speakers at head level, unobstructed and at equal distances to the left and right of your listening position.
2. Connect the included power cable to the left monitor speaker. DO NOT turn on the power yet!
3. Run speaker wire from the Master speaker's OUTPUT TO SPEAKER terminals to the Slave speaker's SPRING CLIPS terminals. The Master speaker will handle the Left channel, while the Slave speaker handles the Right channel.
4. Connect your audio source (mixer, recording interface, etc.) to the INPUTS section on the Master speaker. If connecting to a mixer, the main balanced outputs (usually XLR connections) are preferred and should be connected to the BALANCED inputs using cables that terminate in balanced ¼" TRS plugs.
5. If you have an auxiliary sound source, such as a tablet or smartphone, connect that sound source to the front-panel AUX IN connection using stereo cables with a 1/8" TRS stereo plug.
6. If you are using headphones, plug your headphones into the front-panel PHONES connection.
7. Set the VOLUME knob to the far-left, counter-clockwise position.
8. Set the HIGH and LOW knobs in the ACOUSTIC TUNING section to the center position.
9. Turn on your mixer, recording interface or other audio source.
10. Power on the speakers by pressing the POWER switch on the Master speaker.
11. If you wish to use Bluetooth to stream audio, press the PAIR button and choose the TRUTH speakers from the Bluetooth menu in your tablet or smartphone.
12. While playing audio, slowly turn the VOLUME knob clockwise until you find your desired volume level.
13. If necessary, adjust the HIGH and LOW knobs to cut or boost the bass and treble frequencies to suit your monitoring space.

Bluetooth	
Frequency range	2402 MHz ~ 2480 MHz
Channel number	79
Version	Bluetooth spec 5.3 compliant
Compatibility	Supports GATT, A2DP 1.2 profiles
Max. communication range	20 m (without interference)

## FEDERAL COMMUNICATIONS COMMISSION COMPLIANCE INFORMATION

- Responsible Party Name: Music Tribe Commercial NV Inc.
- Address: 122 E. 42nd St.1, 8th Floor NY, NY 10168, United States
- Email Address: [legal@musictribe.com](mailto:legal@musictribe.com)

**FCC ID: QWHTRUTH**

## FEDERAL COMMUNICATIONS COMMISSION COMPLIANCE INFORMATION

**Responsible Party Name: Music Tribe Commercial NV Inc.**

- Address: 122 E. 42nd St.1,
- 8th Floor NY, NY 10168,
- United States
- Email Address: [legal@musictribe.com](mailto:legal@musictribe.com)

This equipment has been tested and found to comply with the limits for a Class B digital device, pursuant to part 15 of the FCC Rules. These limits are designed to provide reasonable protection against harmful interference in a residential installation. This equipment generates, uses and can radiate radio frequency energy and, if not installed and used in accordance with the instructions, may cause harmful interference to radio communications. However, there is no guarantee that interference will not occur in a particular installation. If this equipment does cause harmful interference to radio or television reception, which can be determined by turning the equipment off and on, the user is encouraged to try to correct the interference by one or more of the following measures:

- Reorient or relocate the receiving antenna.
- Increase the separation between the equipment and receiver.
- Connect the equipment into an outlet on a circuit different from that to which the receiver is connected.
- Consult the dealer or an experienced radio/TV technician for help.

This equipment complies with Part 15 of the FCC rules. Operation is subject to the following two conditions:

1. this device may not cause harmful interference, and
2. this device must accept any interference received, including interference that may cause undesired operation.

### **Important information:**

Changes or modifications to the equipment not expressly approved by Music Tribe can void the user's authority to use the equipment.

### **Caution!**

The manufacturer is not responsible for any radio or TV interference caused by unauthorized modification to this equipment. Such modifications could void the user authority to operate the equipment.

### **FCC RF Radiation Exposure Statement:**

1. This Transmitter must not be co-located or operating in conjunction with any other antenna or transmitter.

2. This equipment complies with FCC RF radiation exposure limits set forth for an uncontrolled environment. This equipment should be installed and operated with minimum distance of 20 centimeters between the radiator and your body.

Hereby, Music Tribe declares that this product is in compliance with Directive 2014/53/EU, Directive 2014/30/EU, Directive 2014/35/EU, Directive 2011/65/EU and Amendment 2015/863/EU, Directive 2012/19/EU, Regulation 519/2012 REACH SVHC and Directive 1907/2006/EC.

- Full text of EU DoC is available at
    - <https://community.musictribe.com>
  - EU Representative: Music Tribe Brands DK A/S
  - Address: Gammel Strand 44, DK-1202 København K, Denmark
  - UK Representative: Music Tribe Brands UK Ltd.
  - Address: 6 Lloyds Avenue, Unit 4CL London EC3N 3AX, United Kingdom
- 

## Documents / Resources

	<p><a href="#">behringer TRUTH 3.5 Powered Studio Monitor</a> [pdf] User Guide</p> <p>TRUTH 3.5 Powered Studio Monitor, TRUTH, 3.5 Powered Studio Monitor, Powered Studio Monitor, Studio Monitor</p>
--	---

## References

- [User Manual](#)

### Manuals+, Privacy Policy

This website is an independent publication and is neither affiliated with nor endorsed by any of the trademark owners. The "Bluetooth®" word mark and logos are registered trademarks owned by Bluetooth SIG, Inc. The "Wi-Fi®" word mark and logos are registered trademarks owned by the Wi-Fi Alliance. Any use of these marks on this website does not imply any affiliation with or endorsement.