



behringer Truebuds User Guide

[Home](#) » [Behringer](#) » behringer Truebuds User Guide 

Quick Start Guide



TRUE BUDS

Audiophile Wireless Earphones with Bluetooth True Wireless Stereo connectivity



Contents

- [1 Important Safety Information](#)
- [2 LEGAL DISCLAIMER](#)
- [3 LIMITED WARRANTY](#)
- [4 Features](#)
- [5 Getting Started](#)
- [6 General Operation](#)
- [7 Troubleshooting tips:](#)
- [8 Specifications](#)
- [9 Other important information](#)
- [10 Documents / Resources](#)
 - [10.1 References](#)
- [11 Related Posts](#)



Important Safety Information

1. Read these instructions.
2. Keep these instructions.
3. Heed all warnings.
4. Follow all instructions.
5. Do not use this apparatus near water.
6. Clean only with dry cloth.
7. Disposal of a battery into fire or a hot oven, or mechanically crushing or cutting of a battery, can result in an explosion.
8. Leaving a battery in an extremely high temperature surrounding environment can result in an explosion, or the leakage of flammable liquid or gas.
9. A battery subjected to extremely low air pressure may result in an explosion or the leakage of flammable liquid or gas.
10. Do not disassemble or modify this product.
11. Do not replace a battery. It can defeat a safeguard
12. Please store this product in a clean and dry environment.
13. Charge it once a month (minimum).
14. Do not leave unattended while charging.
15. WARNING! Choking and Swallowing Hazard. Keep the product safely out of reach of children and pets. The small size and the internal battery present a choking and swallowing hazard. Failure to follow instructions may lead to permanent damage or death.
16. WARNING! To prevent possible hearing damage, do not listen at high volume levels for long periods.

LEGAL DISCLAIMER

Music Tribe accepts no liability for any loss which may be suffered by any person who relies either wholly or in part upon any description, photograph, or statement contained herein. Technical specifications, appearances and other information are subject to change without notice. All trademarks are the property of their respective owners. Midas, Klark Teknik, Lab Gruppen, Lake, Tannoy, Turbosound, TC Electronic, TC Helicon, Behringer, Bugera, Oberheim, Auratone and Coolaudio are trademarks or registered trademarks of Music Tribe Global Brands Ltd. © Music Tribe Global Brands Ltd. 2021 All rights reserved.

LIMITED WARRANTY

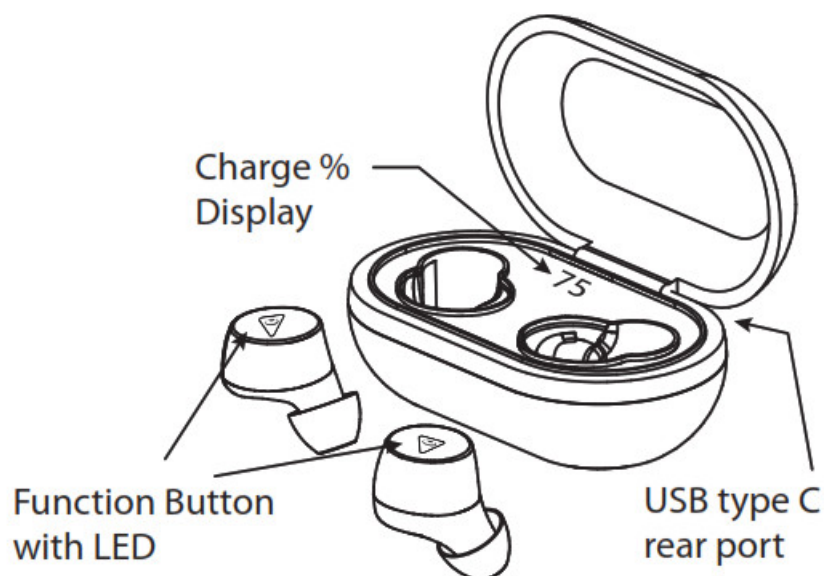
For the applicable warranty terms and conditions and additional information regarding Music Tribe's Limited Warranty, please see complete details online at musictribe.com/warranty.

Accessories List

- TRUE BUDS x 1 pair
- Charging case
- Charging cable, USB
- This quick start guide
- Silicone earplugs in 3 sizes

Features

- Audiophile-grade true wireless earbuds provide wide frequency response (20 Hz – 20 kHz) delivering full bass and detailed highs
- Bluetooth 5.0 true wireless technology for exceptional sound quality with up to 33 ft (10 m) of wireless freedom
- Supports Qualcomm aptX high quality and low latency audio for enhanced video watching and gaming experiences
- Built-in CVC 8.0 isolates the user voice from surrounding clutter for clear phone conversation
- Sound isolating design with a variety of earplugs to block outside noise for detailed music experience
- Seamless phone, voice commands, volume, and music via touch control
- Secure in-ear design ensures earphone stability and comfort
- Splash-proof construction (IPX4) is ideal for sports, work out and any outdoor activity that requires pure listening pleasure
- Up to 4-hours of battery life that can be extended up to 12 hours with the integrated battery charging case
- USB charging cable included · Includes silicone earplugs in 3 sizes to ensure perfect fit



Getting Started

Before use, please read this quick start guide carefully and keep it in a safe place.
Please fully charge the earbuds before use. Do not leave unattended while charging.
Please regularly charge the earbuds if you do not use them for a long time (more than 3 months). Please use the supplied charger cable only.

The earbuds are in the charging state (non-working state) when they are inside the charging case.
Take the earbuds out from the charging case and put into your ears, and you will hear a voice prompt for pairing (the earbuds are in BT discover mode).

LED indication on earbuds:

Charging	Red
Fully charged	Red light will turn off
Pairing mode	Red and Blue lights flashing alternately
BT connected	Blue
Charging case	
USB Type C charging port at the rear	
The case display shows the percentage of charging case power remaining	

General Operation

Power On / Off

Power On	Touch earbud for 3 seconds
Power Off	Touch earbud for 3 seconds
Music Controls	
Play the Track	Touch once on any earbud
Pause the Track	Touch once on any earbud
Volume Up by 7%	Touch RIGHT earbud for a second
Volume Down by 7%	Touch LEFT earbud for a second
Next Track	Touch twice on the RIGHT earbud
Previous Track	Touch twice on the LEFT earbud

Phone Call Controls

Answer incoming call	Touch once on any earbud
Refuse incoming call	Touch twice on any earbud
End the call	Touch once on any earbud
Volume Up by 7%	Touch RIGHT earbud for a second
Volume Down by 7%	Touch LEFT earbud for a second
Voice Assist Control	
Activate Voice Assist	Touch three times on any earbud

Using both earbuds, or a single earbud

1. Make sure both earbuds are off, and your phone or other device's Bluetooth is turned off.
2. **CAUTION:** Turn down the volume of your phone or other devices. This is important to help reduce the possibility of hearing damage.
3. Touch and hold both earbud buttons for 3 seconds, to turn on and enter pairing mode (the earbud's LED will flash in red and blue).
4. Turn on the Bluetooth mode on your phone or device, and search for the earbuds on your screen. Click and connect it. When connected successfully, the LEDs on both earbuds will turn blue.

Troubleshooting tips:

1. If your phone cannot find the earbuds, please check that the earbuds are in pairing mode. If the earbuds are not paired for a long time, please turn on the earbuds to pair again. Sometimes it is better to reset the earbuds and the Bluetooth function of the phone.
2. If it is not possible to talk or listen to music while connected successfully: You might need to choose Bluetooth "Mobile Audio" or "Media Audio" when using an Android system, or please choose Bluetooth on-call interface.
3. If your phone or device is paired/connected with the earbuds but there is no sound: Try removing the earbuds as a Bluetooth device and then pair with your phone or device a second time.

Specifications

Bluetooth version	V 5.0
Bluetooth range	10 meters (with no obstacles)
Frequency range	2402 – 2480 MHz
Channel number	79
Max output power	<10 dBm
CODEC support	aptX, AAC, SBC
Driver unit	6 mm
Impedance	16 Ohm
Frequency response	20 Hz – 20 kHz
SPL	88 dB @1kHz (96 dB peak)
Rated / peak power	3 mW (5 mW peak)
Microphone sensitivity	(- 42 dB ± 3 dB) @1kHz, 0dB=1V/Pa
Battery type	Rechargeable Lithium battery
Working time	Up to 4 hours (+ 12 hours via charging case)
Charging time	2 hours via USB 5V / 500 mA

Other important information

1. **Register online.** Please register your new Music Tribe equipment right after you purchase it by visiting behringer.com. Registering your purchase using our simple online form helps us to process your repair claims more quickly and efficiently. Also, read the terms and conditions of our warranty, if applicable.
2. **Malfunction.** Should your Music Tribe Authorized Reseller not be located in your vicinity, you may contact the Music Tribe Authorized Fulfiller for your country listed under “Support” at behringer.com. Should your country not be listed, please check if your problem can be dealt with by our “Online Support” which may also be found under “Support” at behringer.com. Alternatively, please submit an online warranty claim at behringer.com BEFORE returning the product.

FEDERAL COMMUNICATIONS COMMISSION COMPLIANCE INFORMATION

Behringer TRUE BUDS

Responsible Party Name: Address: **Music Tribe Commercial NV Inc.**
Address: **5270 Procyon Street, Las Vegas NV 89118, United States**
Phone Number: **+1 702 800 8290**

TRUE BUDS

This equipment has been tested and found to comply with the limits for a Class B digital device, pursuant to part 15 of the FCC Rules. These limits are designed to provide reasonable protection against harmful interference in

a residential installation. This equipment generates, uses, and can radiate radio frequency energy and, if not

installed and used in accordance with the instructions, may cause harmful interference to radio communications. However, there is no guarantee that interference will not occur in a particular installation. If this equipment does cause harmful interference to radio or television reception, which can be determined by turning the equipment off and on, the user is encouraged to try to correct the interference by one or more of the following measures:

- Reorient or relocate the receiving antenna.
- Increase the separation between the equipment and receiver.
- Connect the equipment into an outlet on a circuit different from that to which the receiver is connected
- Consult the dealer or an experienced radio/TV technician for help.

This device complies with Part 15 of the FCC rules. Operation is subject to the following two conditions:

1. this device may not cause harmful interference, and
 2. this device must accept any interference received, including interference that may cause undesired operation.
- n.

Important information:

Changes or modifications to the equipment not expressly approved by Music Tribe can void the user's authority to use the equipment.


Caution!

The Music Tribe is not responsible for any radio or TV interference caused by unauthorized modifications to this equipment. Such modifications could void the user authority to operate the equipment

FCC RF Radiation Exposure Statement:

1. This Transmitter must not be co-located or operating in conjunction with any other antenna or transmitter.
2. This equipment complies with FCC RF radiation exposure limits set forth for an uncontrolled environment.

Documents / Resources

	behringer Truebuds [pdf] User Guide Truebuds
-------------------------------------------------------------------------------------	-----------------------------------------------------------------

References

-  [Behringer | Home](#)