

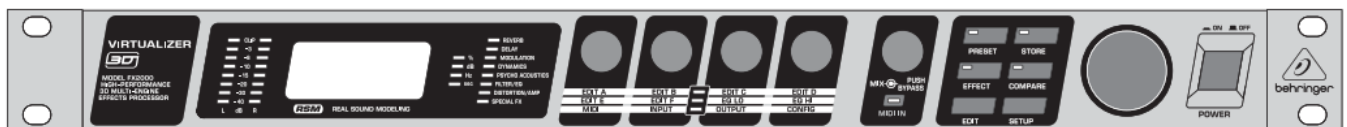


behringer FX2000 Virtualizer 3D Multi Engine Effects Processor User Guide

[Home](#) » [Behringer](#) » behringer FX2000 Virtualizer 3D Multi Engine Effects Processor User Guide 



Quick Start Guide VIRTUALIZER 3D FX2000



High-Performance 3D Multi-Engine Effects Processor
V 5.0

Contents

- [1 Important Safety Instructions](#)
- [2 LEGAL DISCLAIMER](#)
- [3 LIMITED WARRANTY](#)
- [4 Specifications](#)
- [5 Other important information](#)
- [6 FEDERAL COMMUNICATIONS COMMISSION COMPLIANCE INFORMATION](#)
- [7 Documents / Resources](#)
 - [7.1 References](#)
- [8 Related Posts](#)

Important Safety Instructions



Terminals marked with this symbol carry an electrical current of sufficient magnitude to constitute a risk of electric shock.



Use only high-quality professional speaker cables with ¼" TS or twist-locking plugs pre-installed. All other installations or modifications should be performed only by qualified personnel.



This symbol, wherever it appears, alerts you to the presence of uninsulated dangerous voltage inside the enclosure – voltage that may be sufficient to constitute a risk of shock.



This symbol, wherever it appears, alerts you to important operating and maintenance instructions in the accompanying literature. Please read the manual.



Caution

To reduce the risk of electric shock, do not remove the top cover (or the rear section). No user-serviceable parts inside. Refer servicing to qualified personnel.



Caution

To reduce the risk of fire or electric shock, do not expose this appliance to rain and moisture. The apparatus shall not be exposed to dripping or splashing liquids and no objects filled with liquids, such as vases, shall be placed on the apparatus.



Caution

These service instructions are for use by qualified service personnel only. To reduce the risk of electric shock do not perform any servicing other than that contained in the operation instructions. Repairs have to be performed by qualified service personnel.

1. Read these instructions.

2. Keep these instructions.
3. Heed all warnings.
4. Follow all instructions.
5. Do not use this apparatus near water.
6. Clean only with a dry cloth.
7. Do not block any ventilation openings. Install in accordance with the manufacturer's instructions.
8. Do not install near any heat sources such as radiators, heat registers, stoves, or other apparatus (including amplifiers) that produce heat.
9. Do not defeat the safety purpose of the polarized or grounding-type plug. A polarized plug has two blades one wider than the other. A grounding-type plug has two blades and a third grounding prong. The wide blade or the third prong is provided for your safety. If the provided plug does not fit into your outlet, consult an electrician for the replacement of the obsolete outlet.
10. Protect the power cord from being walked on or pinched particularly at plugs, convenience receptacles, and the point where they exit from the apparatus.
11. Use only attachments/accessories specified by the manufacturer.



12. Use only with the cart, stand, tripod, bracket, or table specified by the manufacturer, or sold with the apparatus. When a cart is used, use caution when moving the cart/apparatus combination to avoid injury from tip-over.
13. Unplug this apparatus during lightning storms or when unused for long periods of time.
14. Refer all servicing to qualified service personnel.

Servicing is required when the apparatus has been damaged in any way, such as a power supply cord or plug is damaged, liquid has been spilled or objects have fallen into the apparatus, the apparatus has been exposed to rain or moisture, does not operate normally, or has been dropped.

15. The apparatus shall be connected to a MAINS socket outlet with a protective earthing connection.
16. Where the MAINS plug or an appliance coupler is used as the disconnect device, the disconnect device shall remain readily operable.



7. Correct disposal of this product: This symbol indicates that this product must not be disposed of with household waste, according to the WEEE Directive (2012/19/EU) and your national law. This product should be taken to a collection center licensed for the recycling of waste electrical and electronic equipment (EEE). The mishandling of this type of waste could have a possible negative impact on the environment and human health due to potentially hazardous substances that are generally associated with EEE. At the same time, your cooperation in the correct disposal of this product will contribute to the efficient use of natural resources. For more information about where you can take your waste equipment for recycling, please contact your local city office or your household waste collection service.
18. Do not install in a confined space, such as a bookcase or similar unit.
19. Do not place naked flame sources, such as light candles, on the apparatus.
20. Please keep the environmental aspects of battery disposal in mind. Batteries must be disposed of at a battery collection point.
21. This apparatus may be used in tropical and moderate climates up to 45°C.

LEGAL DISCLAIMER

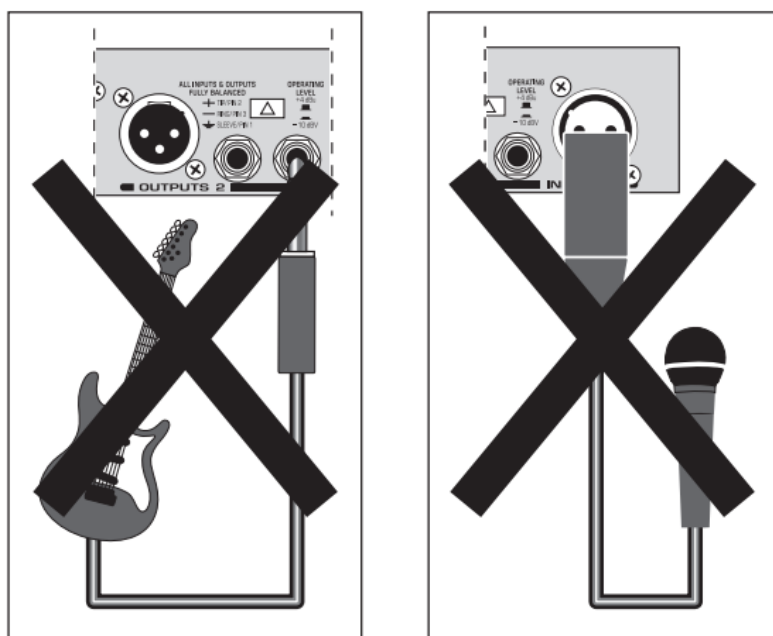
Music Tribe accepts no liability for any loss which may be suffered by any person who relies either wholly on or in part upon any description, photograph, or statement contained herein. Technical specifications, appearances, and other information are subject to change without notice. All trademarks are the property of their respective owners. Midas, Klark Teknik, Lab Gruppen, Lake, Tannoy, Turbosound, TC Electronic, TC Helicon, Behringer, Bugera, Oberheim, Auratone, Aston Microphones, and Coolaudio are trademarks or registered trademarks of Music Tribe Global Brands Ltd. © Music Tribe Global Brands Ltd. 2021 All rights reserved.

LIMITED WARRANTY

For the applicable warranty terms and conditions and additional information regarding Music Tribe's Limited Warranty, please see complete details online at musictribe.com/warranty.

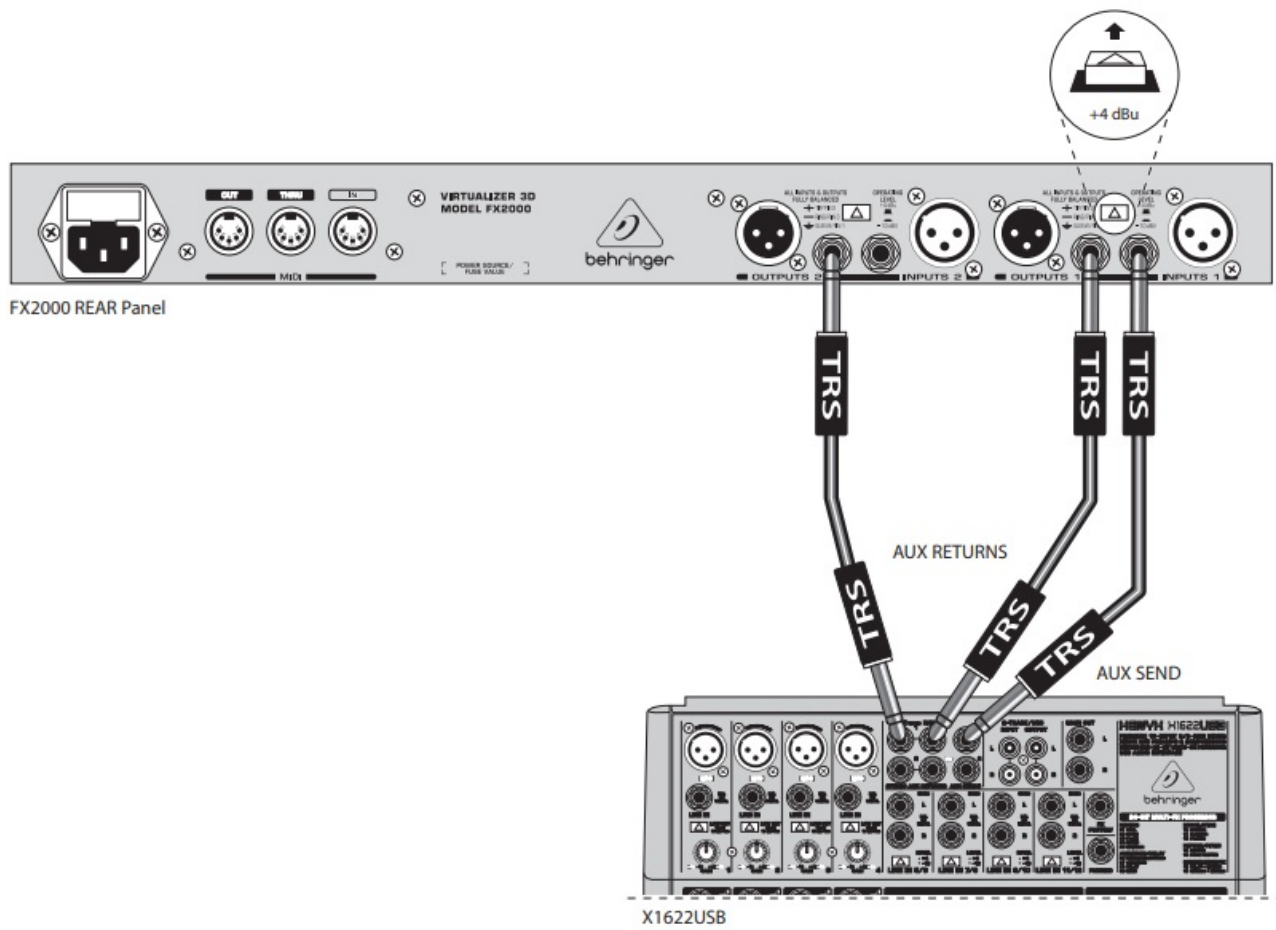
VIRTUALIZER 3D FX2000 Hook-up

Step 1: Hook-Up

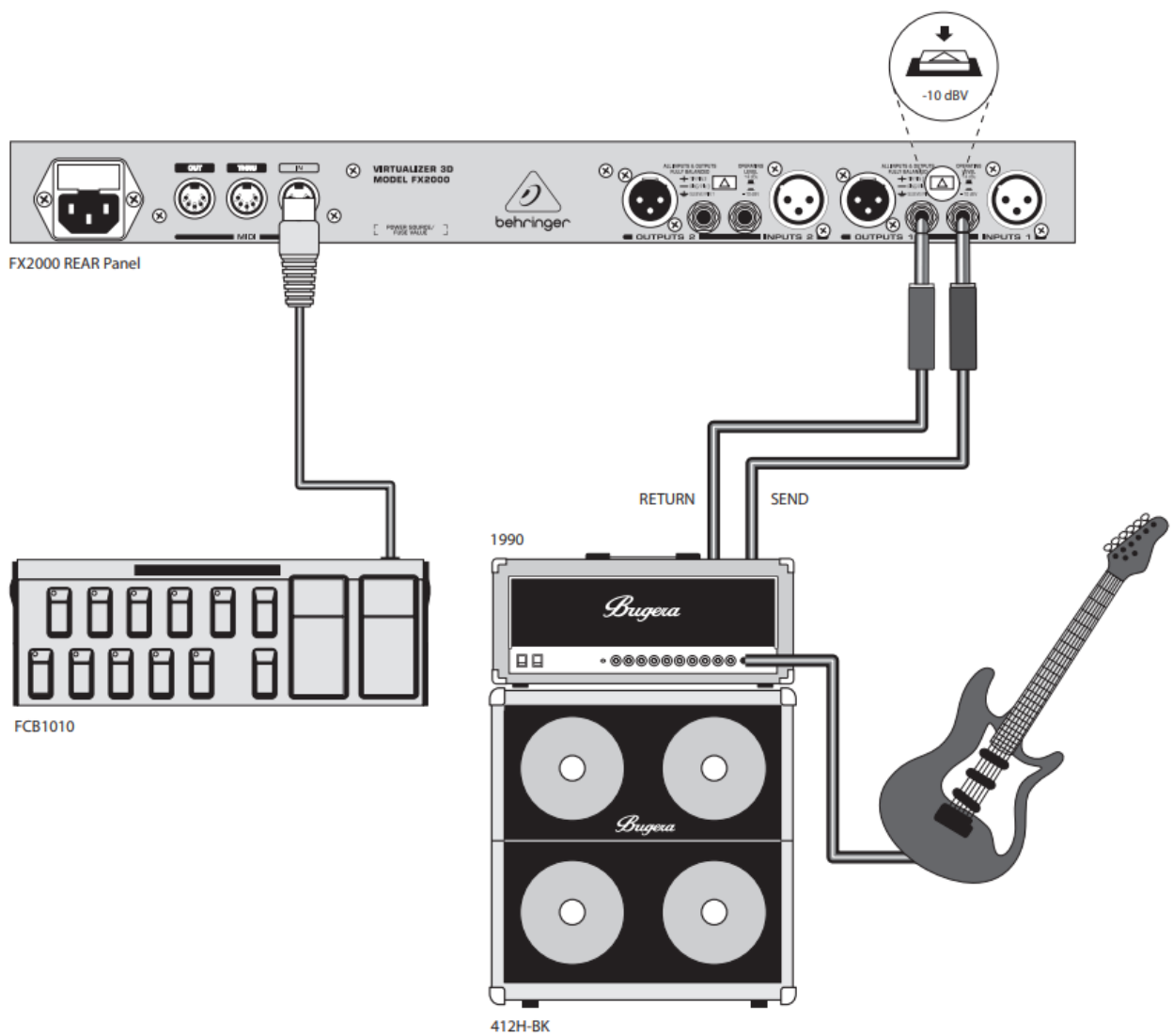


INPUTS 1

External effects processor with the mixing board



FX2000 in guitar amp effects loop



Step 2: Controls

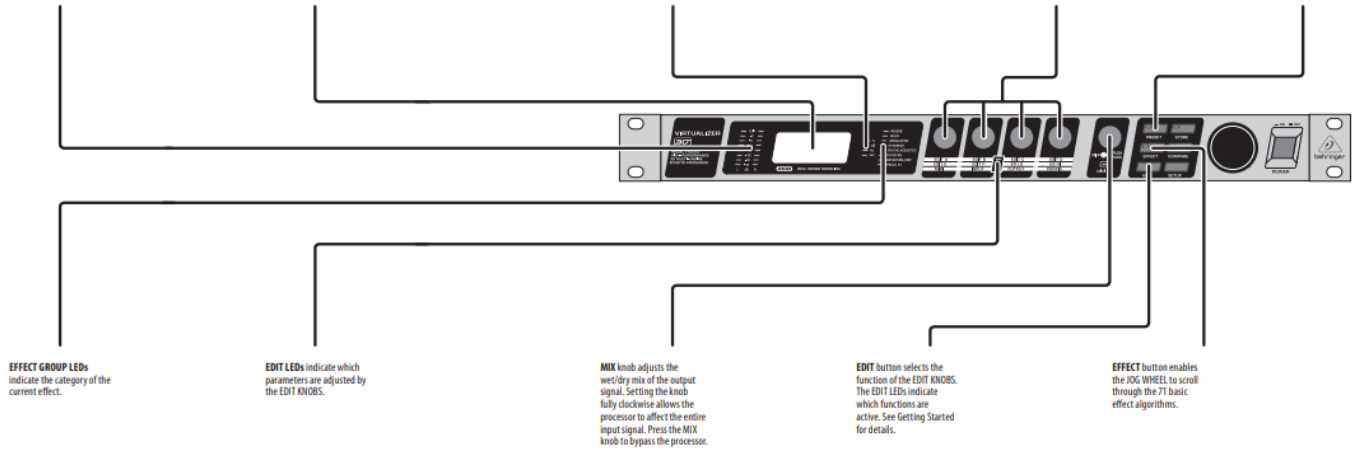
LEVEL METERS display the signal level relative to the setting of the **OPERATING LEVEL** button on the rear panel.

DISPLAY shows the effect name, parameter name, and parameter value of the current preset.

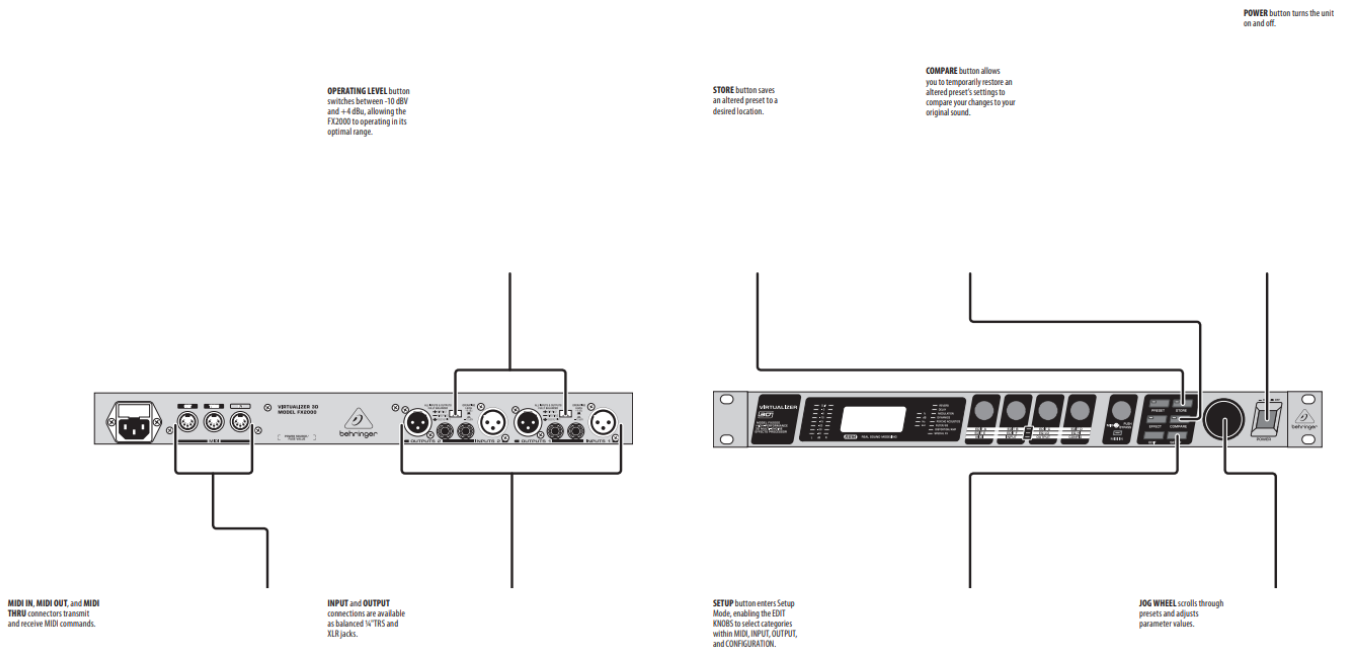
STATUS LEDs indicate the type of value that may currently be edited. You may set the value of an effect parameter (%), adjust the amplitude or threshold of an effect (dB), modify a frequency (Hz), or modify a time parameter (sec).

EDIT KNOBS adjust various effect parameters, EQ settings, MIX functions and INPUT/OUTPUT configurations.

PRESET button enables the JOG WHEEL to scroll through the 200 presets.

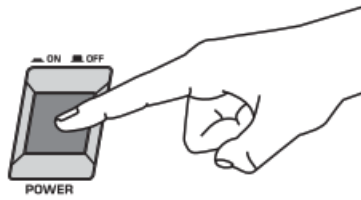


Step 2: Controls

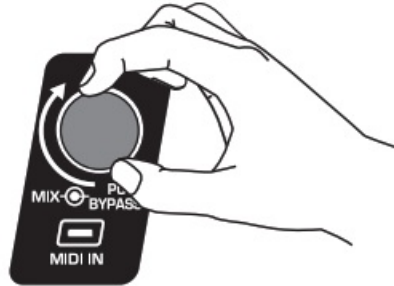


Step 3: Getting started

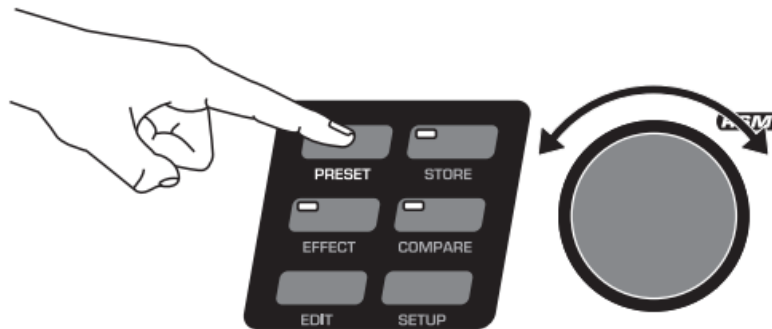
1. Make all audio, MIDI, and power connections to the FX2000. Leave the power for all devices off!
2. Power up the FX2000, followed by other devices.



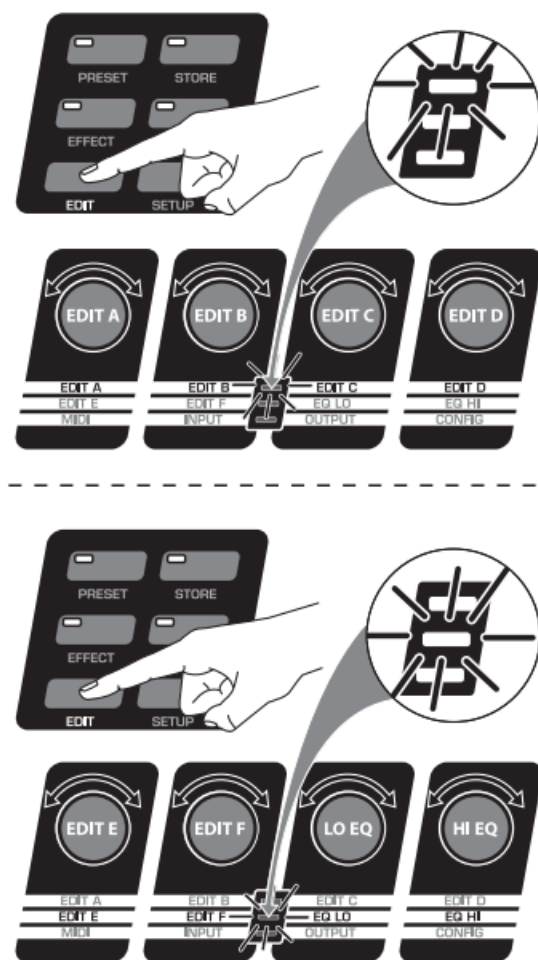
3. Turn the MIX knob up to adjust how “wet” or intense the effect is on the signal. If using the processor with a mixing board, set the MIX knob fully clockwise.



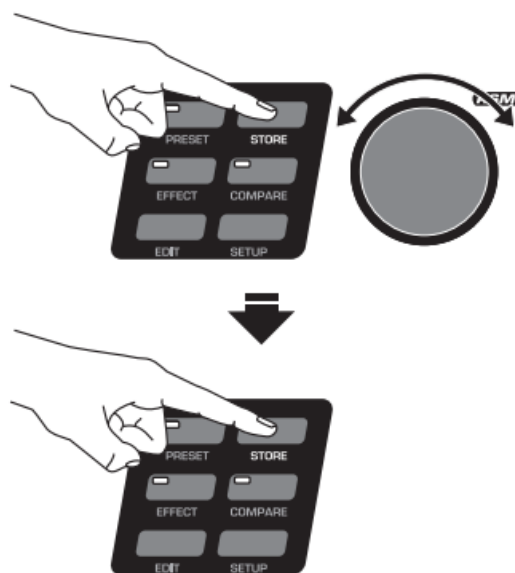
4. Adjust the Send and Return levels on your amplifier or mixer if necessary.
Make sure the LEVEL METERS on the front panel do not reach the red CLIP LEDs.
5. To select a preset, press the PRESET button, then turn the JOG WHEEL to scroll through the available presets.



6. To edit the preset, press the EDIT button, then rotate the EDIT KNOBS to adjust parameters A-D. Press the EDIT button again to access parameters E and F and the LO and HI EQ.



7. To save an altered preset, press the STORE button. Rotate the JOG WHEEL to select a user preset location, then press the STORE button again to confirm.



8. Log on to behringer.com to download the full manual for more details on the FX2000's functionality.

Internal Presets (Factory Settings)

No.	EFFECT	No.	EFFECT	No.	EFFECT	No.	EFFECT
I.001	CATHEDRAL OF COLOGNE	I.026	MEDIUM DELAY	I.051	PANNING	I.076	HEAVY METAL

I.002	CONCERT CA THEDRAL	I.027	OLD TAPE	I.052	COMPRESSO R	I.077	FUZZ BOX
I.003	BIG PLATE	I.028	BIG TAPE	I.053	EXPANDER	I.078	RADIO SPEA KER
I.004	DARK PLATE	I.029	PING PONG	I.054	GATE	I.079	BAD SPEAKE R
I.005	SMALL CHAM BER	I.030	CHAOS	I.055	ANALOG COM PR./LIMITER	I.080	ROBOTIZED
I.006	DRUM CLOSE T	I.031	STEREO CHO RUS	I.056	ULTRAMIZER	I.081	AM-RADIO
I.007	BRIGHT ROO M	I.032	ANALOG CHO RUS	I.057	DENOISER	I.082	OLD RECOR D PLAYER
I.008	AMBIENT RO OM	I.033	VINTAGE CH ORUS	I.058	DE-ESSER	I.083	VINTAGE TAP E
I.009	LARGE HALL	I.034	ULTRA CHOR US	I.059	WAVE DESIG NER	I.084	SAMPLER
I.010	CONCERT HA LL	I.035	STEREO FLA NGER	I.060	EXCITER	I.085	VOCODER
I.011	LIVE STUDIO	I.036	VINTAGE FLA NGER	I.061	ULTRAVOX	I.086	VOICE CANC ELER
I.012	DRY STUDIO	I.037	JET STREAM FLANGER	I.062	ULTRABASS	I.087	RESONATOR
I.013	ARENA	I.038	STEREO PHA SER	I.063	SUBBASS	I.088	CHORUS & R EVERB 1
I.014	GARAGE	I.039	RETRO PHAS ER	I.064	STEREO IMA GER	I.089	CHORUS & R EVERB 2
I.015	GUITAR AMP SPRING	I.040	WILD PHASE R	I.065	ULTRA-WIDE	I.090	FLANGER & REVERB 1
I.016	STUDIO SPRI NG	I.041	VINTAGE PHA SER	I.066	HEADPHONE EXTENDER	I.091	FLANGER & REVERB 2
I.017	BIG DRUMS	I.042	DUAL PHASE R	I.067	SPEAKER EXTENDER	I.092	LESLIE & RE VERB
I.018	NICE AMBIEN CE	I.043	ROTARY SPE AKER	I.068	AUTO FILTER	I.093	PITCH & REV ERB
I.019	REFLECTING ROOM	I.044	B3 LESLIE	I.069	LFO FILTER	I.094	DELAY & REV ERB
I.020	VOICE WIDEN ER	I.045	STEREO PITC H SHIFTER	I.070	PARAMETRIC EQ	I.095	TREMOLO & REVERB
I.021	BASS DRUM E XTENDER	I.046	MAJOR 7	I.071	GRAPHIC EQ	I.096	PHASER & R EVERB
I.022	PHIL'S DRUMS	I.047	IT'S JAZZ	I.072	VOCAL SPEAK ER	I.097	CHORUS & D ELAY

I.023	SHORT REVERSE	I.048	REAL CHORUS!	I.073	TUBE AMP	I.098	FLANGER & DELAY
I.024	MEDIUM REVERSE	I.049	VIBRATO	I.074	CRUNCH	I.099	PITCH & DELAY
I.025	SHORT DELAY	I.050	TREMOLO	I.075	BLUES	I.100	TREMOLO & DELAY

User Presets (Factory Settings)

No.	EFFECT	No.	EFFECT	No.	EFFECT	No.	EFFECT
U.001	DYNA CHORUS	U.026	UNDER THE BRIDGE	U.051	SOFT WAH WAH	U.076	DISTORTION
U.002	METALLIC FLANGER	U.027	BASS EQ	U.052	SOFT CHORUS REVERSE	U.077	ROBOT
U.003	GATED AMBIENCE	U.028	BLUE'S GROOVE	U.053	FAT GUITAR	U.078	ULTRAMAXXX
U.004	CHORUS ROOM	U.029	SPACE FLANGER	U.054	4 SPACE FX	U.079	PHIL'S SNARE
U.005	TAPE ECHO & ROOM	U.030	GOLD VERB	U.055	FATTY	U.080	WIDE
U.006	QUART ROOM	U.031	80S DIGITAL	U.056	SPACER	U.081	AMBIENCE
U.007	CRAZY MUSIC BOX	U.032	ARPEGGIATOR VCF	U.057	SYNTH HEAVEN	U.082	PLATEAU
U.008	OLD GRAMOPHONE	U.033	VALVE PREAMP	U.058	JEAN GLITTER	U.083	EMPTY LIVING ROOM
U.009	CRUNCH BOX	U.034	NEAR FIELD-WIDE!	U.059	SOFT TUBE	U.084	ECHO PLAY
U.010	AUTO-WAH	U.035	PING PONG PAN	U.060	DRUMZZZ	U.085	STAGE
U.011	FILTER GROOVE	U.036	SUBWOOFER ROOM	U.061	PERC COMPRESSION	U.086	BIG CATHEDRAL
U.012	SPACE RADIO	U.037	MODULIZZ	U.062	INDUSTRIALIZER	U.087	ETERNITY
U.013	BUBBLE DRUMS	U.038	RECORDING STUDIO	U.063	STRANGE GLIDE 140	U.088	NICE HALL
U.014	BRICK WALL	U.039	FLANGERS	U.064	SQUARE AT 140	U.089	REVERSE TREMOLO
U.015	ARPEGGIATOR	U.040	CHEAP SPRING	U.065	SQUARE BREATH 140	U.090	REVERSE
U.016	STACCATO	U.041	BRITISH SOLO	U.066	PITCH CHORUS	U.091	VOCAL CHORUS

U.017	THE VOICE	U.042	JAZZ CLUB	U.067	CHORUS 2	U.092	SMOOTH VOCAL FX
U.018	PSEUDO STEREO	U.043	SMALL SPEAKER	U.068	SOFT METALLIZER	U.093	FATTY VOICE CHORUS
U.019	ROOM PHASER	U.044	AUDITORIUM	U.069	PHASER	U.094	VOICE EQ
U.020	COMPUTER GAME	U.045	DE-NOIZ	U.070	FLANGER IN BACKGROUND	U.095	PHONE VOICE
U.021	THE FINAL MIX	U.046	MINOR 7	U.071	HARD FLANGER	U.096	VOICE COMPRESSOR
U.022	BASS CHORUS	U.047	BALLAD TREMOLO	U.072	SOFT FLANGER	U.097	EMPTY ARENA (VOICE)
U.023	LIVE ROOM	U.048	TRANCE	U.073	DELAY 137 16TH	U.098	PANOMOLO
U.024	IN THE CLOSET	U.049	DISCO SOUND	U.074	VINTAGE PICKING	U.099	DISTORTED VOCAL
U.025	SYMPHONIC	U.050	DUO REVERB	U.075	DELAY STEREO 137	U.100	MOUNTAIN ECHOES

	Name	Edit A	Edit B	Edit C	Edit D	Edit E	Edit F	Mix
Reverbs								
1	Cathedral	Pre-Delay	Decay	Hi Dec. Damping	ER / Rev. Bal.	Low Cut	Rev. Mod.	Mix
2	Gold Plate	Pre-Delay	Decay	Hi Dec. Damping	Low Cut	She. Damping	Diffusion	Mix
3	Small Hall	Pre-Delay	Decay	Hi Dec. Damping	Size	She. Damping	Low Cut	Mix
4	Room	Pre-Delay	Decay	Hi Dec. Damping	Size	She. Damping	Diffusion	Mix
5	Concert	Pre-Delay	Decay	Hi Dec. Damping	Bass Mul.	She. Damping	Rev. Mod.	Mix
6	Studio	Pre-Delay	Decay	Hi Dec. Damping	Spread	She. Damping	Diffusion	Mix

7	Stage	Pre-Delay	Decay	Hi Dec. D amping	Size	She. Dam ping	ER / Rev. Bal.	Mix
8	Spring Rev erb	Pre-Delay	Decay	Hi Dec. D amping	Metal Res o.	Hi-Cut	Diffusion	Mix
9	Ambiance	Pre-Delay	Decay	Hi Dec. D amping	Size	Low Cut	Diffusion	Mix
10	Early Reflections	Pre-Delay	Size	Wall Dam ping	Reflection s	Stereo Wi dth	Diffusion	Mix
11	Gated Reve rb	Pre-Delay	Decay	Hi Dec. D amping	Density	Low Cut	Diffusion	Mix
12	Reverse Re verb	Pre-Delay	Decay	Hi Dec. D amping	Density	Low Cut	Diffusion	Mix
Delay								
13	Stereo Dela y	Delay Left Coarse	Delay Lef t Fine	Delay Rig ht Coarse	Delay Rig ht Fine	Feedback Left	Feedback Rig ht	Mix
14	Tape Echo	Delay Left	Delay Rig ht	Feedback	Damping	Feedback HP	Feedback LP	Mix
15	Ping Pong	Delay Left	Delay Rig ht	Feedback Left	Feedback Right	Feed. Del ay L	Feed. Delay R	Mix
Modulation								
16	Stereo Cho rus	Speed	Depth	Delay	Stereo Ph ase	LFO Wav e	Damping	Mix
17	Analog Cho rus	Speed	Depth	Delay	Stereo Spr ead	—	—	Mix
18	Vintage Ch orus	Speed	Depth	Delay	Damping	—	—	Mix
19	Ultra Choru s	Speed	Depth	Delay	Wideness	Stereo Sp read	Damping	Mix

20	Stereo Flanger	Speed	Depth	Feedback	Delay	Stereo Phase	Feedback LP	Mix
21	Vintage Flanger	Speed	Depth	Feedback	Delay	—	—	Mix
22	Jet Stream Flanger	Speed	Depth	Feedback	Delay	—	—	Mix
23	Stereo Phaser	Speed	Depth	Feedback	Stereo Phase	Mode	—	Mix
24	Vintage Phaser	Speed	Depth	Feedback	Base	—	—	Mix
25	Dual Phaser	Speed	Depth	Feedback	Base	—	—	Mix
26	Leslie	Speed	Drum Depth	Horn Depth	Drive	Balance	—	Mix
27	Pitch Shifter	Semitones 1	Cents 1	Semitones 2	Cents 2	Semitones 3	Cents 3	Mix
28	Vibrato	Speed	Depth	Wave	Auto Mode.	—	—	Mix
29	Tremolo	Speed	Depth	Wave	Auto Mode.	—	—	Mix
30	Auto Panning	Speed	Depth	Wave	Auto Mode.	—	—	Mix
Dynamics								
31	Compressor	Ratio	Threshold	Makeup-Gain	Soft Knee	Attack	Release	Mix
32	Expander	Ratio	Threshold	Makeup-Gain	SoftKnee	Attack	Release	Mix
33	Gate	Hold	Threshold	Attack	Release	Range	—	Mix

34	Analog Compr./Lim.	Ratio	Threshold	Makeup-Gain	Limiter Threshold	Attack	Release	Mix
35	Ultramizer	Density	Range	Speed	Split Frequency	Stereo FX	Enhancer Freq.	Band
36	Denoiser	LP-Frequency	LP-Depth	LP-Speed	Gate Threshold	Gate Hold	Gate Resp.	Mix
37	De-Esser	Ratio	Threshold	Makeup-Gain	Frequency	Attack	Release	Band
38	Wave Designer	Attack Left	Release Left	Attack Right	Release Right	Gain Left	Gain Right	Mix
Psycho Acoustic								
39	Exciter	Frequency	Filter-Q	Harmonics	Timbre	Harmon. Kick	—	Mix
40	Enhancer	High Freq	High Gain	Bass Width	Bass Gain	Mid Q	Mid Gain	Gain
41	Ultra Bass	Subbass Freq.	Subbass Level	Harmon. Freq.	Harmon. Level	Harm. Density	Bass Gain	Mix
42	Stereo Imager	Spread	MS-Balance	Spread Mode	Gain	Stereo Bal.	Mono Balance	Mix
43	Ultra-Wide	Center	Spread	X-Over Freq.	Gain	—	—	Mix
44	Binauralizer	Center	Space	Mode	Gain	Spk. Distance	Spk.Compensation	Mix
45	Auto Filter	Base Freq.	Depth	Type	Resonance	Attack	Release	Mix
46	LFO Filter	Base Freq.	Depth	Type	Resonance	Speed	Wave	Mix
47	Parametric EQ	Gain 1	Freq. 1	Q 1	Gain 2	Freq. 2	Q 2	Gain

48	Graphic EQ	200 Hz	400 Hz	800 Hz	1.6 kHz	3.2 kHz	6.4 kHz	Gain
Distortion/Amp Simulation								
49	Vocal Distor tion	Distortion	Delay Gai n	Delay	Flanger Le vel	Type	Flanger Spee d	Mix
50	Tube Distort ion	Drive	Pre HP	Pre LP	Damp	Tube Sele ct	Mid EQ	Mix
51	Guitar Amp	In Gain	Drive	Presence	Gain	Cabinet T ype	Mid EQ	Mix
52	Tri Fuzz	In Gain	Low-Fuzz	Mid-Fuzz	Hi-Fuzz	Drive	Hi Damp	Mix
53	Speaker Si mulation	Type	EQ-Gain	EQ-Freq.	EQ-Q	—	—	Mix
54	Ring Modul ator	Speed	Depth	Carrier Fr eq.	Tone	Mode	Slewing	Mix
55	LoFi	Bit Resolu tion	Tone	Buzz Leve l	Noise Gai n	Noise HP	Noise LP	Mix
Special FX								
56	Finalizer	Speed	Clicks Le vel	Scratch L evel	Noise Lev el	Tone	Noise Freq.	Mix
57	Sampler	Rec/Stop	Play/Stop	Speed	Mode	Rec Gain	Overdub Gai n	Mix
58	Vocoder	Sensitivity	Mode	Attack	Release	Frequency	Resonance	Mix
59	Voice Canc eler	Bass Freq .	MS-Balan ce	Treble Pa n	Gain	—	—	Mix
60	Resonator	Speed	Depth	Carrier Fr eq.	Feedback	Mode	Slewing	Mix
Combination								

61	Chorus & Reverb	Speed	Depth	Delay	Reverb Mix	Decay	Hi Damp	Mix
62	Flanger & Reverb	Speed	Depth	Feedback	Reverb Mix	Decay	Hi Damp	Mix
63	Leslie & Reverb	Speed	Depth	Doppler	Reverb Mix	Decay	Hi Damp	Mix
64	Pitch Shifter & Reverb	Semitones	Cents	High Cut	Reverb Mix	Decay	Hi Damp	Mix
65	Delay & Reverb	Delay	Feedback	Type	Reverb Mix	Decay	Hi Damp	Mix
66	Tremolo & Reverb	Speed	Depth	Auto Mode.	Reverb Mix	Decay	Hi Damp	Mix
67	Phaser & Reverb	Speed	Depth	Feedback	Reverb Mix	Decay	Hi Damp	Mix
68	Chorus & Delay	Speed	Depth	Mod. Delay	Delay Mix	Delay Time	Delay Feb.	Mix
69	Flanger & Delay	Speed	Depth	Feedback	Delay Mix	Delay Time	Delay Feb.	Mix
70	Pitch Shifter & Delay	Semitones	Cents	High Cut	Delay Mix	Delay Time	Delay Feb.	Mix
71	Tremolo & Delay	Speed	Depth	Auto Mode.	Delay Mix	Delay Time	Delay Feb.	Mix

Specifications

Analog Inputs	
Connectors	XLR and ¼" TRS
Type	RF filtered, servo-balanced input stage

Impedance	80 k Ω balanced
Nominal Operating Level	-10 dBV or +4 dBu (selectable)
Max. Input Level	+15 dBu at +4 dBu nominal level, +1 dB at -10 dBV nominal level
Analog Outputs	
Connectors	XLR and 1/4" TRS
Type	Electronically servo-balanced output stage
Impedance	80 Ω balanced
Max. Output Level	+15 dBu at +4 dBu nominal level, +1 dB at -10 dBV nominal level
System Specifications	
Bandwidth	20 Hz to 20 kHz, +/- 3 dB
SNR	91 dB, unweighted, 20 Hz to 20 kHz
THD	0.018% typ. @ +4 dBu, 1 kHz, 0 dBu input, gain 1
Crosstalk	< -76 dB
MIDI Interface	

Type	5-pin DIN-socket IN / OUT / THRU
Digital Processing	
Converters	24-bit Sigma-Delta, 64/128-times oversampling
Sampling Rate	46.875 kHz
Display	
Type	4-digit 14 segments alpha-numeric LED-Display
Power Supply	
Voltage	
USA/Canada	120 V~, 60 Hz
Europe/U.K./Australia	230 V~, 50 Hz
Japan	100 V~, 50 – 60 Hz
General export model	120/230 V~, 50 – 60 Hz
Fuse	100 – 120 V~: T 200 mA H 250 V 200 – 240 V~: T 100 mA L 250 V
Power Consumption	15 Watts max.
Mains Connection	Standard IEC receptacle

Physical	
Dimensions (H x W x D)	1.75 x 19 x 8.5" / 44.5 x 483 x 217 mm
Net Weight	approx. 4.2 lbs / 1.9 kg
Shipping Weight	approx. 7 lbs / 3.2 kg

Other important information

Important information

1. Register online. Please register your new Music Tribe equipment right after you purchase it by visiting musictribe.com. Registering your purchase using our simple online form helps us to process your repair claims more quickly and efficiently. Also, read the terms and conditions of our warranty, if applicable.
2. Malfunction. Should your Music Tribe Authorized Reseller not be located in your vicinity, you may contact the Music Tribe Authorized Fulfiller for your country is listed under "Support" at musictribe.com. Should your country not be listed, please check if your problem can be dealt with by our "Online Support" which may also be found under "Support" at musictribe.com.
Alternatively, please submit an online warranty claim at musictribe.com BEFORE returning the product.
3. Power Connections. Before plugging the unit into a power socket, please make sure you are using the correct mains voltage for your particular model. Faulty fuses must be replaced with fuses of the same type and rating without exception.

FEDERAL COMMUNICATIONS COMMISSION COMPLIANCE INFORMATION

Behringger

VIRTUALIZER 3D FX2000

Responsible Party Name: Music Tribe Commercial NV Inc.
Address: 5270 Procyon Street, Las Vegas NV 89118, United States
Phone Number: +1 702 800 8290

VIRTUALIZER 3D FX2000

This equipment has been tested and found to comply with the limits for a Class B digital device, pursuant to part 15 of the FCC Rules. These limits are designed to provide reasonable protection against harmful interference in a residential installation. This equipment generates, uses and can radiate radio frequency energy and, if not installed and used in accordance with the instructions, may cause harmful interference to radio communications. However, there is no guarantee that interference will not occur in a particular installation. If this equipment does cause harmful interference to radio or television reception, which can be determined by turning the equipment off and on, the user is encouraged to try to correct the interference by one or more of the following measures:

- Reorient or relocate the receiving antenna.

- Increase the separation between the equipment and receiver.
- Connect the equipment into an outlet on a circuit different from that to which the receiver is connected.
- Consult the dealer or an experienced radio/TV technician for help.

This device complies with Part 15 of the FCC rules. Operation is subject to the following two conditions:

- (1) this device may not cause harmful interference, and
- (2) this device must accept any interference received, including interference that may cause undesired operation.

Important information:

Changes or modifications to the equipment not expressly approved by Music Tribe can void the user's authority to use the equipment.



Hereby, Music Tribe declares that this product is in compliance with Directive 2014/35/EU, Directive 2014/30/EU, Directive 2011/65/EU, and Amendment 2015/863/ EU, Directive 2012/19/EU, Regulation 519/2012 REACH SVHC and Directive 1907/2006/EC.

The full text of the EU DoC is available at <https://community.musictribe.com/>

EU Representative: Music Tribe Brands DK A/S

Address: Ib Spang Olsens Gade 17, DK – 8200 Aarhus N, Denmark

We Hear You



Documents / Resources

	behringer FX2000 Virtualizer 3D Multi Engine Effects Processor [pdf] User Guide FX2000, Virtualizer 3D Multi Engine Effects Processor, FX2000 Virtualizer 3D Multi Engine Effects Processor
--	--

References

- [Behringer | Home](#)
- [Music Tribe](#)
- [Music Tribe](#)
- [Music Tribe](#)

- [User Manual](#)

[Manuals+](#), [Privacy Policy](#)

This website is an independent publication and is neither affiliated with nor endorsed by any of the trademark owners. The "Bluetooth®" word mark and logos are registered trademarks owned by Bluetooth SIG, Inc. The "Wi-Fi®" word mark and logos are registered trademarks owned by the Wi-Fi Alliance. Any use of these marks on this website does not imply any affiliation with or endorsement.